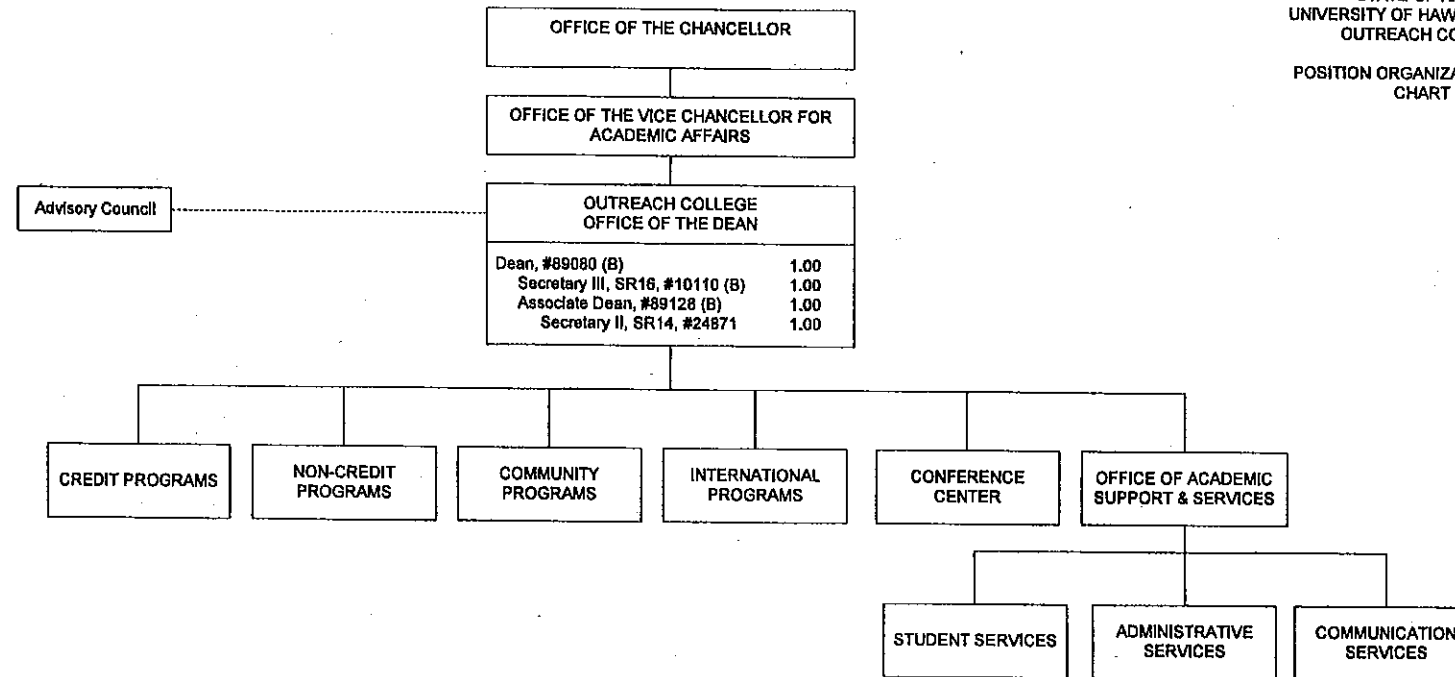


STATE OF HAWAII
UNIVERSITY OF HAWAII AT MANOA
OUTREACH COLLEGE

POSITION ORGANIZATION CHART
CHART I



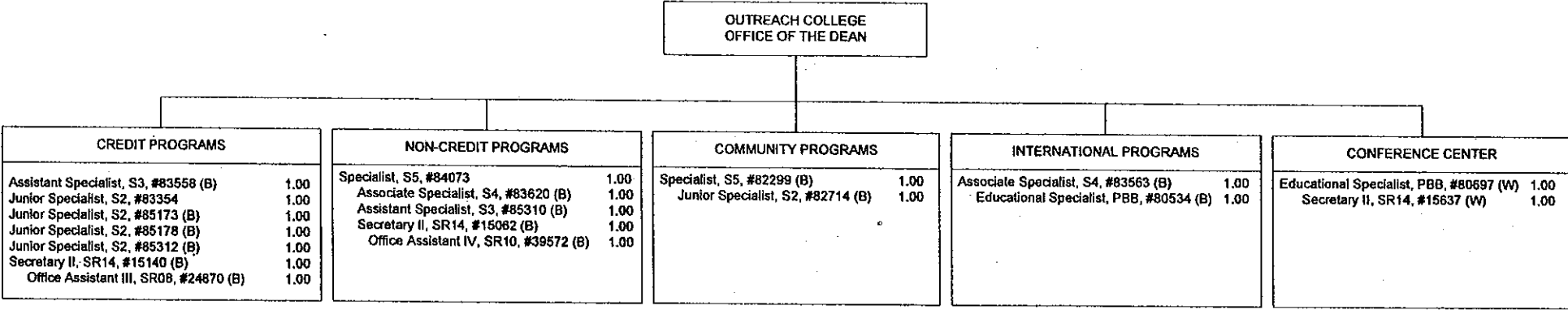
General Funds = 1.00
(S) Special Funds = 3.00

Grand Total FTE by funding:
General Funds = 3.00
(S) Special Funds = 37.00
(W) Revolving Funds = 2.00

CHART UPDATED
JUL 01 2009
DATE _____

STATE OF HAWAII
UNIVERSITY OF HAWAII AT MANOA
OUTREACH COLLEGE

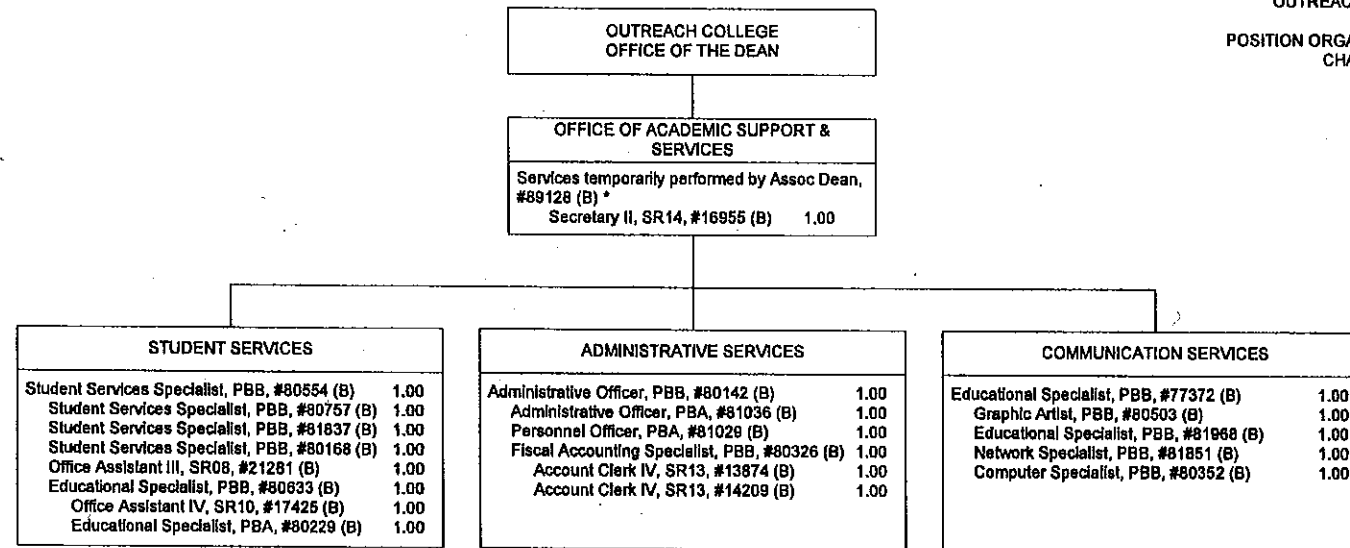
POSITION ORGANIZATION CHART
CHART II



General Funds = 2.00
(S) Special Funds = 14.00
(W) Revolving Funds = 2.00

STATE OF HAWAII
UNIVERSITY OF HAWAII AT MANOA
OUTREACH COLLEGE

POSITION ORGANIZATION CHART
CHART III



*Not included in position total

(S) Special Funds = 20.00

CHART UPDATED
JUL 01 2009
DATE _____