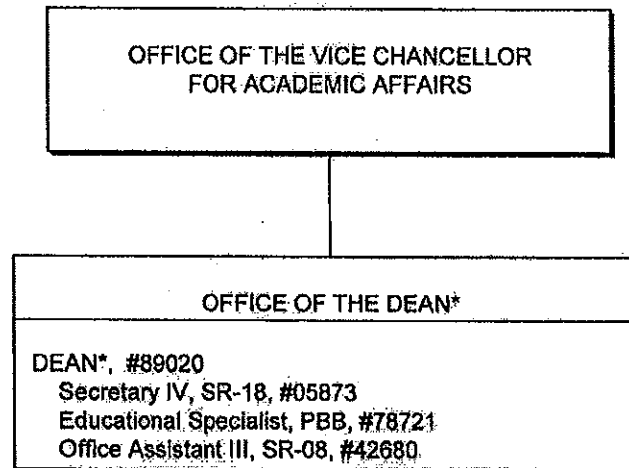


**CHART UPDATED**  
JUL 01 2009  
DATE

STATE OF HAWAII  
UNIVERSITY OF HAWAII  
UNIVERSITY OF HAWAII AT MANOA  
COLLEGE OF TROPICAL AGRICULTURE AND HUMAN  
RESOURCES

OFFICE OF THE DEAN  
POSITION ORGANIZATION CHART: XLI-A



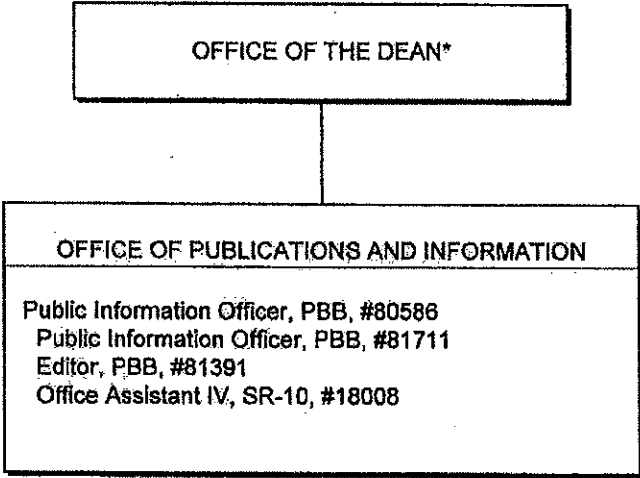
General Funds 4.00

\* & Director of Research and Cooperative Extension

CHART UPDATED  
JUL 01 2009  
DATE \_\_\_\_\_

STATE OF HAWAII  
UNIVERSITY OF HAWAII  
UNIVERSITY OF HAWAII AT MANOA  
COLLEGE OF TROPICAL AGRICULTURE AND HUMAN RESOURCES

OFFICE OF PUBLICATIONS AND INFORMATION  
POSITION ORGANIZATION CHART: XLI-B

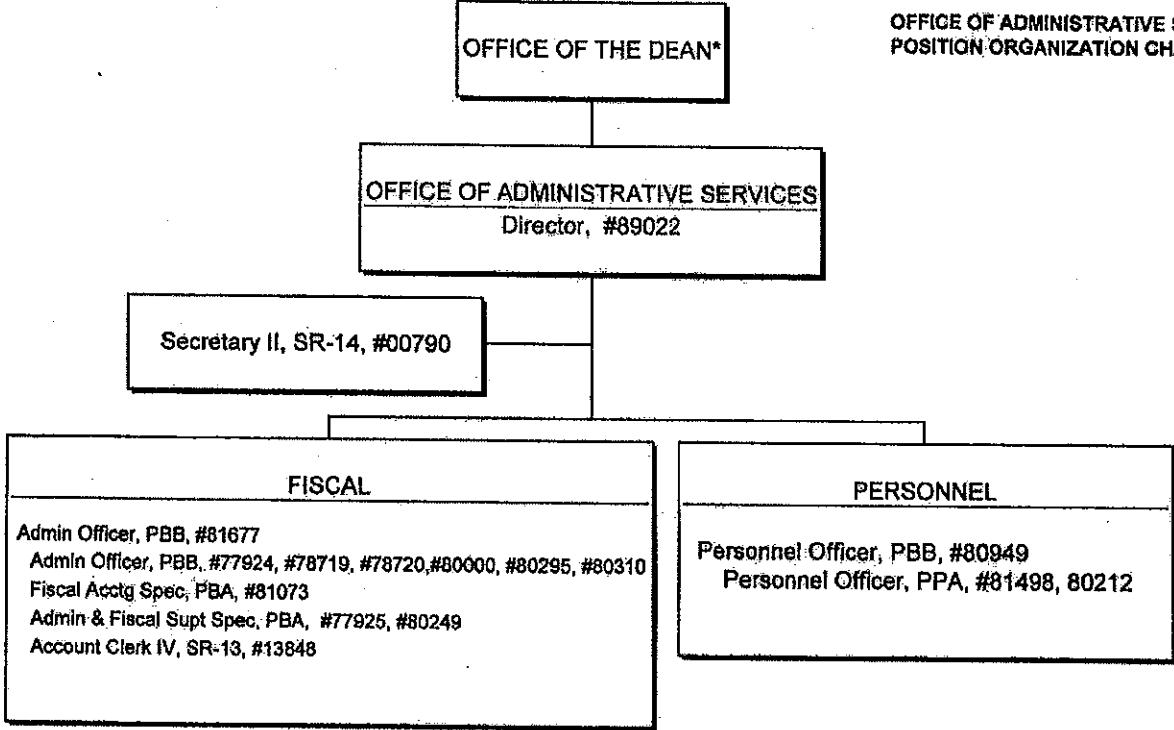


\* & Director of Research and Cooperative Extension  
General Funds: 4.00

CHART UPDATED  
JUL 01 2009  
DATE \_\_\_\_\_

STATE OF HAWAII  
UNIVERSITY OF HAWAII  
UNIVERSITY OF HAWAII AT MANOA  
COLLEGE OF TROPICAL AGRICULTURE AND HUMAN RESOURCES

OFFICE OF ADMINISTRATIVE SERVICES  
POSITION ORGANIZATION CHART: XLI-C

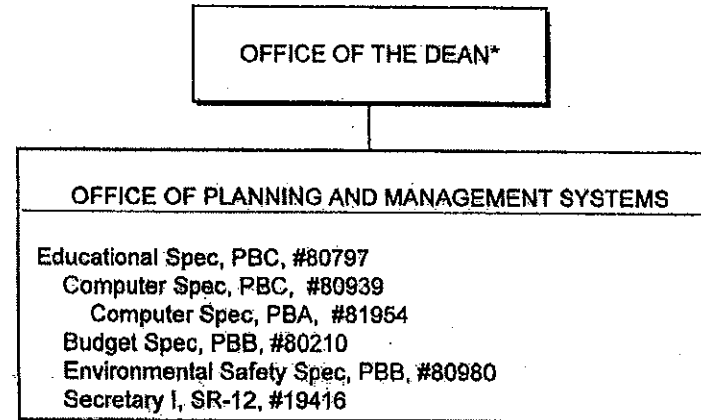


\*& Director of Research and Cooperative Extension  
General Funds: 16.00

CHART UPDATED  
JUL 01 2009  
DATE

STATE OF HAWAII  
UNIVERSITY OF HAWAII  
UNIVERSITY OF HAWAII AT MANOA  
COLLEGE OF TROPICAL AGRICULTURE AND HUMAN RESOURCES

OFFICE OF PLANNING AND MANAGEMENT SYSTEMS  
POSITION ORGANIZATION CHART: XLI-D



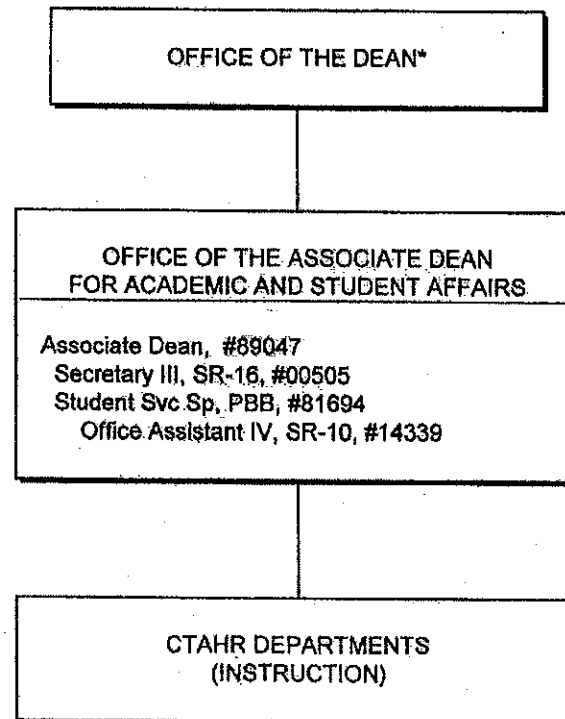
\* & Director of Research and Cooperative Extension

General Funds: 6.00

CHART UPDATED  
DATE JUL 01 2000

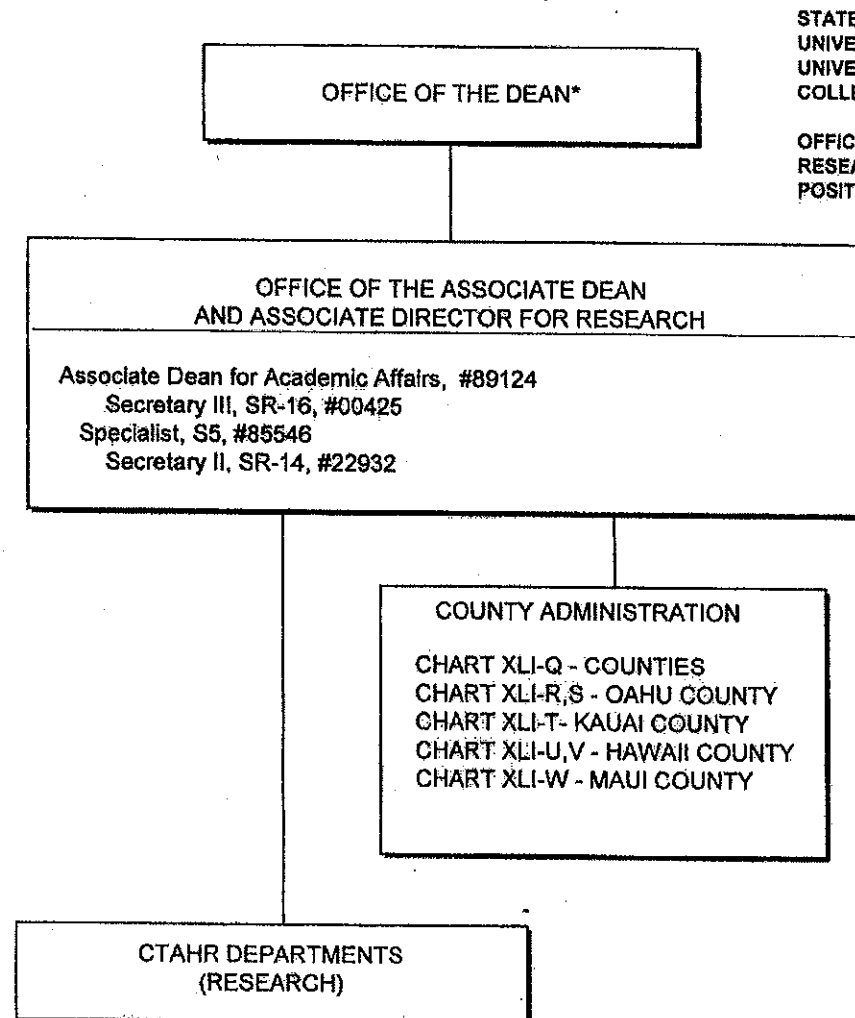
STATE OF HAWAII  
UNIVERSITY OF HAWAII  
UNIVERSITY OF HAWAII AT MANOA  
COLLEGE OF TROPICAL AGRICULTURE AND HUMAN RESOURCES

OFFICE OF THE ASSOCIATE DEAN FOR ACADEMIC AND STUDENT  
AFFAIRS  
POSITION ORGANIZATION CHART: XLI-E



\* & Director of Research and Cooperative Extension  
General Funds: 4.00

CHART UPDATED  
JUL 01 2009  
DATE \_\_\_\_\_

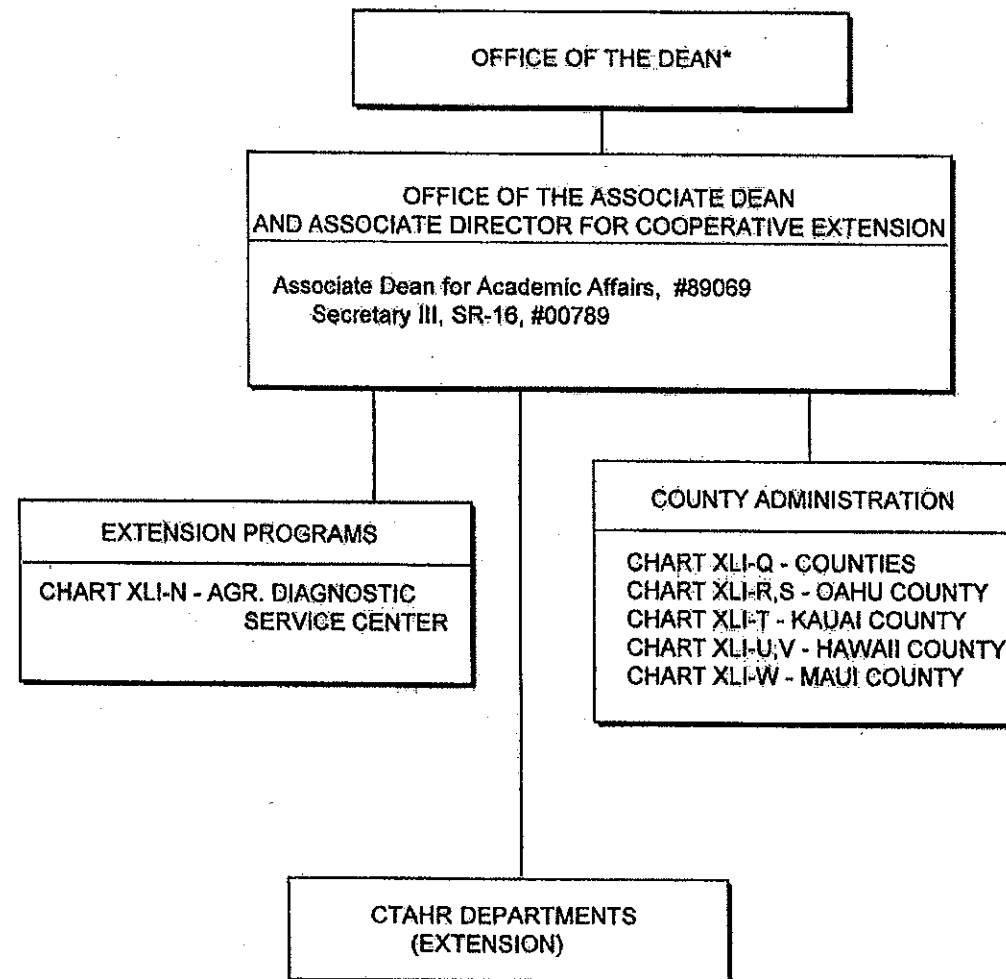


STATE OF HAWAII  
UNIVERSITY OF HAWAII  
UNIVERSITY OF HAWAII AT MANOA  
COLLEGE OF TROPICAL AGRICULTURE AND HUMAN RESOURCES

OFFICE OF THE ASSOCIATE DEAN AND ASSOCIATE DIRECTOR FOR  
RESEARCH  
POSITION ORGANIZATION CHART: XLI-F

\* & Director of Research and Cooperative Extension  
General Funds: 4.00

CHART UPDATED  
JUL 01 2009  
DATE \_\_\_\_\_



STATE OF HAWAII  
UNIVERSITY OF HAWAII  
UNIVERSITY OF HAWAII AT MANOA  
COLLEGE OF TROPICAL AGRICULTURE AND HUMAN RESOURCES

OFFICE OF THE ASSOCIATE DEAN AND ASSOCIATE DIRECTOR  
FOR COOPERATIVE EXTENSION  
POSITION ORGANIZATION CHART: XLI-G

\*8 Director of Research and Cooperative Extension  
General Funds: 2.00

CHART UPDATED  
DATE JUL 01 2009



OFFICES OF THE ASSOCIATE DEANS AND DIRECTORS  
FOR ACADEMIC AND STUDENT AFFAIRS,  
RESEARCH, AND COOPERATIVE EXTENSION

STATE OF HAWAII  
UNIVERSITY OF HAWAII  
UNIVERSITY OF HAWAII AT MANOA  
COLLEGE OF TROPICAL AGRICULTURE AND HUMAN RESOURCES

DEPARTMENT OF FAMILY AND CONSUMER SCIENCES  
POSITION ORGANIZATION CHART: XLI-H

DEPARTMENT OF FAMILY AND CONSUMER SCIENCES

Chairperson (Appointed from among faculty positions)

Secretary II, SR-14, #22849

Clerk-Steno II, SR-09, #21208

Office Assistant III, SR-08, #04108

Faculty 1/

Oahu

#82074, #82336, #82392, #82699, #82866, #82869, #82094, #83220, #83242,  
#83525, #83553, #83666, #83765, #83843, #84070, #84082, #84388, #84648  
#84662, #84685, #84914, #85151, #85421, #85476, #86066, #86274

Hawaii

#82313, #82505, #83267, #84610

Kauai

#82175

Maui

#84913, #84147

Educ & Acad Supt Spec, PBA, #80784

Admin & Fiscal Supt Spec, PBA, #78061

Graduate Assistant, GA, #88134 (.50), #88410 (.50), #88576 (.50)

1/ Research FTE: 1.85, Extension FTE: 3.45, Instruction FTE: 15.45

General Funds: 27.25

CHART UPDATED

DATE JUL 01 2009

STATE OF HAWAII  
UNIVERSITY OF HAWAII  
UNIVERSITY OF HAWAII AT MANOA  
COLLEGE OF TROPICAL AGRICULTURE AND HUMAN RESOURCES

DEPARTMENT OF HUMAN NUTRITION, FOOD AND ANIMAL  
SCIENCES  
POSITION ORGANIZATION CHART: XLI-I

OFFICES OF THE ASSOCIATE DEANS AND DIRECTORS  
FOR ACADEMIC AND STUDENT AFFAIRS,  
RESEARCH, AND COOPERATIVE EXTENSION

DEPARTMENT OF HUMAN NUTRITION, FOOD AND ANIMAL SC(ENCES)

Chairperson (Appointed from among faculty positions)  
Secretary II, SR-14, #00400  
Office Assistant III, SR-08, #15513, #42682

Faculty 1/

Oahu

#82107, #82248, #82945, #83017, #83510, #83633, #83742, #83785, #83811, #83830, #83862,  
#84227, #84306, #84323, #84439, #84449, #84454, #84496, #84512, #84640, #84668, #84919,  
#84920, #87443, #87552

Maui

#83728, #84163

Hawaii

#82090, #84158, #84276, #84297

Kauai

#82363

Admin & Fiscal Supt Spec, PBA, #80386

Research Associate, PBB, #80410

Research Associate, PBA, #77092

Computer Spec, PBB, #80037

Graduate Asst, GA-R, #88088 (.50), #88165 (.50), #88241 (.50), #88303 (.50), #88438 (.50), #88565 (.50)

1/ Research FTE: 4.20, Extension FTE: 3.55, Instruction FTE: 10.75

General Funds: 28.60

CHART UPDATED  
JUL 01 2003  
DATE \_\_\_\_\_

STATE OF HAWAII  
UNIVERSITY OF HAWAII  
UNIVERSITY OF HAWAII AT MANOA  
COLLEGE OF TROPICAL AGRICULTURE AND HUMAN RESOURCES

DEPARTMENT OF MOLECULAR BIOSCIENCES AND BIOSYSTEMS  
ENGINEERING  
POSITION ORGANIZATION CHART: XLI-J

OFFICES OF THE ASSOCIATE DEANS AND DIRECTORS  
FOR ACADEMIC AND STUDENT AFFAIRS,  
RESEARCH, AND COOPERATIVE EXTENSION

DEPARTMENT OF MOLECULAR BIOSCIENCES AND BIOENGINEERING

Chairperson (Appointed from among faculty positions)

Secretary II, SR-14, #12960

Office Assistant III, SR-08, #14758

Faculty<sup>1/</sup>

Oahu

#82027, #82432, #82919, #83034, #83184, #83343, #83690, #83767,

#83882, #84114, #84193, #84600, #84617, #84631, #87523, #85425, #85517

Admin & Fiscal Supl Spec, PBA, #78048

Engineer, PBB, #78812

Research Associate, PBB, #80323, #80324, #80409, #81325

Graduate Assistant, GA-R, #88219 (.50), #88509 (.50), #88630 (.50), #88643 (.50)

Agr Eqp Dev Wkg Supv, WS-13, #05729

Agr Lab Technician I, BC-12, #05730

<sup>1/</sup> Research FTE: 7.80, Extension FTE: .60, Instruction FTE: 3.92

General Funds: 24.32

CHART UPDATED

DATE JUL 01 2009

STATE OF HAWAII  
UNIVERSITY OF HAWAII  
UNIVERSITY OF HAWAII AT MANOA  
COLLEGE OF TROPICAL AGRICULTURE AND HUMAN RESOURCES

DEPARTMENT OF NATURAL RESOURCES AND ENVIRONMENTAL  
MANAGEMENT  
POSITION ORGANIZATION CHART: XLI-K

OFFICES OF THE ASSOCIATE DEANS AND DIRECTORS  
FOR ACADEMIC AND STUDENT AFFAIRS,  
RESEARCH, AND COOPERATIVE EXTENSION

DEPARTMENT OF NATURAL RESOURCES AND ENVIRONMENTAL MANAGEMENT

Chairperson (Appointed from among faculty positions)  
Secretary II, SR-14, #05838  
Office Assistant III, SR-08, #03397, #42681

Faculty 1/  
Oahu

#82058, #82516, #82772, #83117, #83459, #83629, #83770, #83824, #84120,  
#84216, #84488, #84627, #84872, #84915, #86242, #87234, #85522, #85539

Hawaii  
#84171

Educational Spec. PBB, #80391

Research Associate, PBA, #80320

Admin & Fiscal Supt Spec, PBA, #78324

Graduate Assistant, GA #88028 (.50), #88181 (.50), #88431 (.50), #88494 (.50)

Agr Research Technician IV, SR-14, #00398

1/ Research FTE: 6.25, Extension FTE: 3.30, Instruction FTE: 5.50  
General Funds: 23.05

CHART UPDATED  
JUL 01 2009

DATE

OFFICES OF THE ASSOCIATE DEANS AND DIRECTORS  
FOR ACADEMIC AND STUDENT AFFAIRS,  
RESEARCH, AND COOPERATIVE EXTENSION

STATE OF HAWAII  
UNIVERSITY OF HAWAII  
UNIVERSITY OF HAWAII AT MANOA  
COLLEGE OF TROPICAL AGRICULTURE AND HUMAN RESOURCES

DEPARTMENT OF PLANT AND ENVIRONMENTAL PROTECTION  
SCIENCES  
POSITION ORGANIZATION CHART: XLI-L

DEPARTMENT OF PLANT AND ENVIRONMENTAL PROTECTION SCIENCES

Chairperson (Appointed from among faculty positions)  
Secretary II, SR-14, #07477  
Office Assistant III, SR-08, #00794, #15509

Faculty 1/

Oahu

#82047, #82139, #82550, #82687, #83067, #83320, #83513, #83884,  
#84006, #84041, #84138, #84316, #84489, #84911, #85547

Maui

#86034, #85530

Hawaii

#82985, #82722, #83462, #83542, #85538

Kauai

#83816, #83840, #85505

Admin & Fiscal Support, PBA, #77864

Educational Specialist, PBB, #80250

Research Associate, PBB, #80385, #80388, #81178, #81311

Research Associate, PBA, #81313

Graduate Assistant, GA, #88486 (.50), #84932 (.50)

Agr Research Technician V, SR-16, #00442

Agr Research Technician IV, SR-14, #24270

Agr Research Technician III, SR-11, #24269

1/ Research FTE: 6.14, Extension FTE: 1.86, Instruction FTE: 3.77

General Funds: 25.77

CHART UPDATED

DATE JUL 01 2009

OFFICES OF THE ASSOCIATE DEANS AND DIRECTORS  
FOR ACADEMIC AND STUDENT AFFAIRS,  
RESEARCH, AND COOPERATIVE EXTENSION

STATE OF HAWAII  
UNIVERSITY OF HAWAII  
UNIVERSITY OF HAWAII AT MANOA  
COLLEGE OF TROPICAL AGRICULTURE AND HUMAN  
RESOURCES

DEPARTMENT OF TROPICAL PLANT AND SOIL SCIENCE  
POSITION ORGANIZATION CHART: XLI-M

DEPARTMENT OF TROPICAL PLANT AND SOIL SCIENCE

Chairperson (Appointed from among faculty positions)

Secretary II, SR-14, #00793

Clerk-Steno III, SR-11, #00399

Faculty 1/

Oahu

#82023, #82181, #82240, #82464, #82598, #82704, #82747, #82881, #83142,  
#83159, #83260, #83304, #83388, #83682, #83740, #83938, #84067, #84321  
#84408, #84420, #84481, #84501, #84916, #85555, #86275

Maul

#83848, #84075, #84530, #85477, #87584

Hawaii

#82758, #83054, #82951, #83073, #83286, #83515, #84354, #85542

Kauai

#82196, #84500

Admin & Fiscal Support, PBA, #77795

Educational Specialist, PBB, #81362

Research Associate, PBB, #80270, #80313

Graduate Assistant, GA, #88171 (.50), #88423 (.50)

Agr Research Technician V, SR-16, #11019

Agr Research Technician IV, SR-14, #05392, #00397, #15512

1/Research FTE: 6.87, Extension FTE: 9.05, Instruction FTE: 4.65

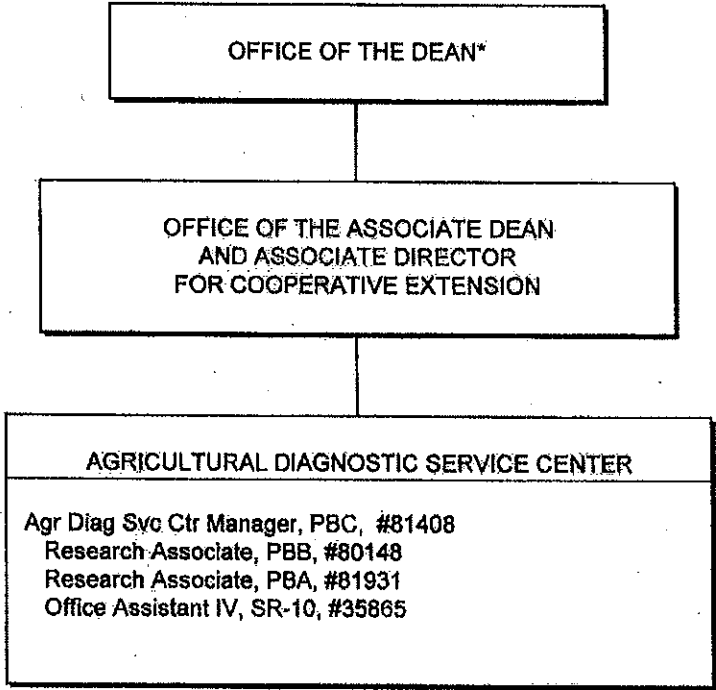
General Funds: 31.57

CHART UPDATED

DATE JUL 01 2009

STATE OF HAWAII  
UNIVERSITY OF HAWAII  
UNIVERSITY OF HAWAII AT MANOA  
COLLEGE OF TROPICAL AGRICULTURE AND HUMAN RESOURCES

AGRICULTURAL DIAGNOSTIC SERVICE CENTER  
POSITION ORGANIZATION CHART: XLI-N

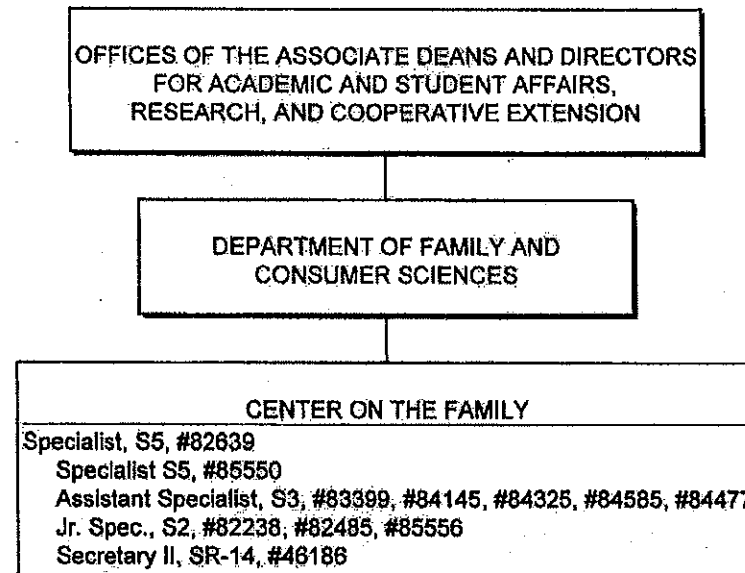


\*& Director of Research and Cooperative Extension  
General Funds: 4.00

CHART UPDATED  
DATE JUL 01 2009

STATE OF HAWAII  
UNIVERSITY OF HAWAII  
UNIVERSITY OF HAWAII AT MANOA  
COLLEGE OF TROPICAL AGRICULTURE AND HUMAN RESOURCES

CENTER ON THE FAMILY  
POSITION ORGANIZATION CHART: XLI-O



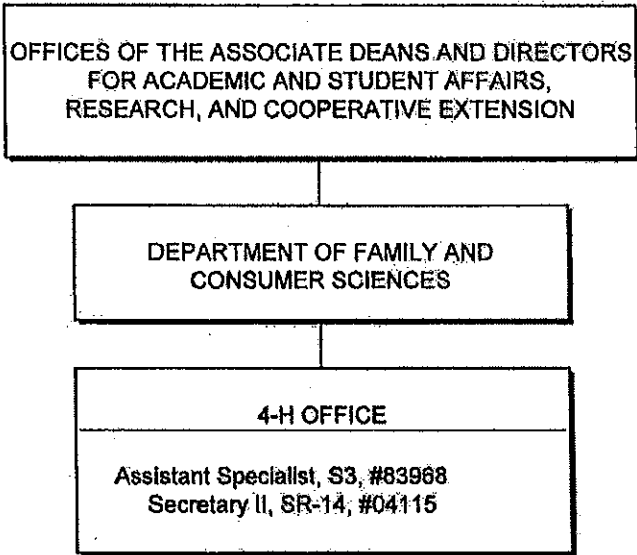
General Funds: 8.30

CHART UPDATED  
DATE JUL 01 2009



STATE OF HAWAII  
UNIVERSITY OF HAWAII  
UNIVERSITY OF HAWAII AT MANOA  
COLLEGE OF TROPICAL AGRICULTURE AND HUMAN RESOURCES

4-H OFFICE  
POSITION ORGANIZATION CHART: XLI-P

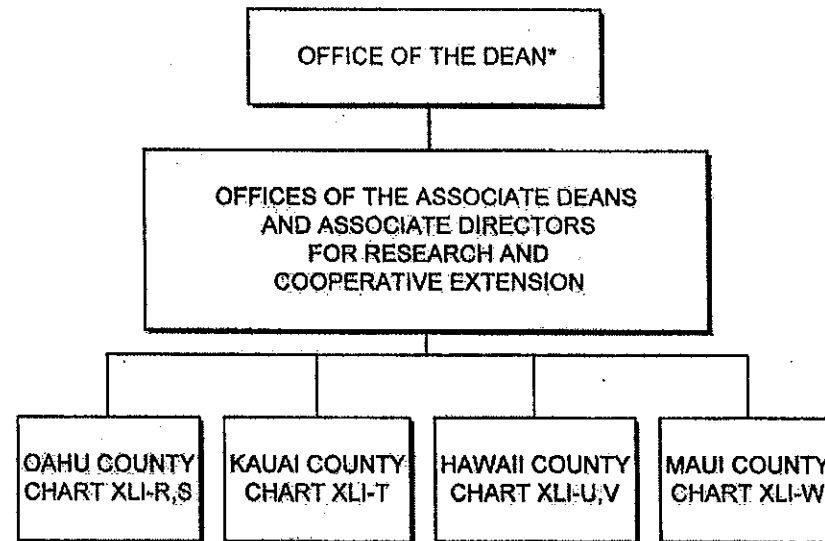


General Funds: 2.00

CHART UPDATED  
DATE JUL 01 2009

STATE OF HAWAII  
UNIVERSITY OF HAWAII  
UNIVERSITY OF HAWAII AT MANOA  
COLLEGE OF TROPICAL AGRICULTURE AND HUMAN RESOURCES

COUNTY ADMINISTRATION  
POSITION ORGANIZATION CHART: XLI-Q

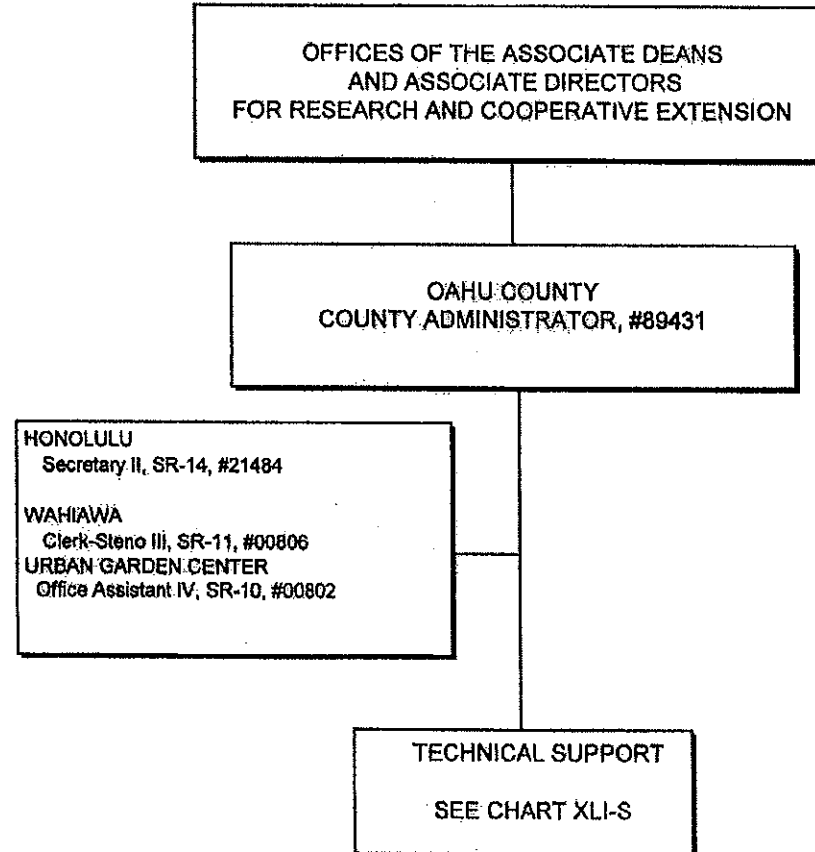


\* & Director of Cooperative Science & Education

CHART UPDATED  
DATE JUL 01 2009

STATE OF HAWAII  
UNIVERSITY OF HAWAII  
UNIVERSITY OF HAWAII AT MANOA  
COLLEGE OF TROPICAL AGRICULTURE AND HUMAN RESOURCES

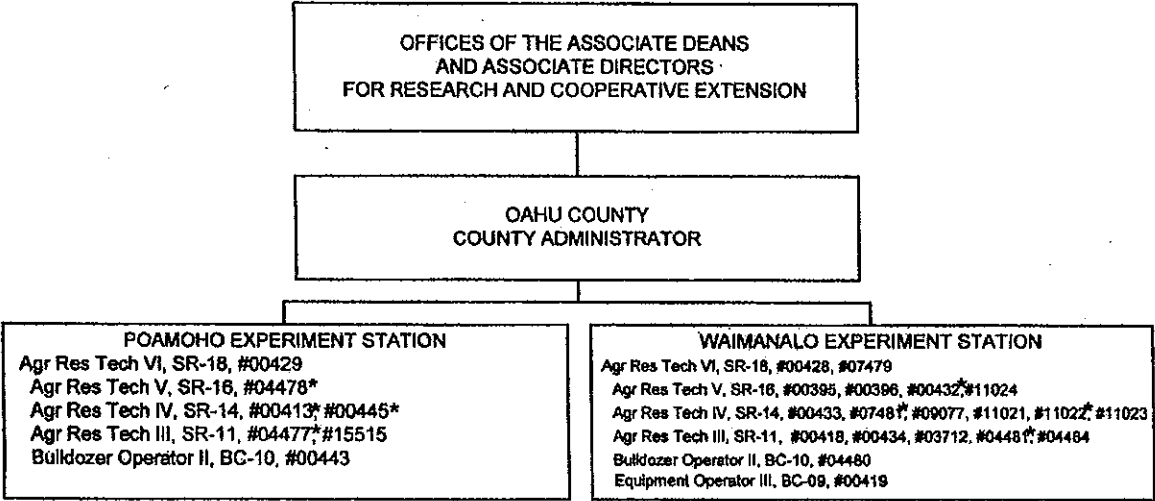
OAHU COUNTY  
POSITION ORGANIZATION CHART: XLI-R



General Funds: 4.00

CHART UPDATED  
DATE JUL 01 2009

STATE OF HAWAII  
UNIVERSITY OF HAWAII  
UNIVERSITY OF HAWAII AT MANOA  
COLLEGE OF TROPICAL AGRICULTURE  
AND HUMAN RESOURCES  
  
OAHU COUNTY - TECHNICAL SUPPORT  
POSITION ORGANIZATION CHART: XLI-S



\*To be reclassified  
General Funds: 26.00

CHART UPDATED  
JUL 01 2009  
DATE \_\_\_\_\_

OFFICES OF THE ASSOCIATE DEANS  
AND ASSOCIATE DIRECTORS  
FOR RESEARCH AND COOPERATIVE EXTENSION

STATE OF HAWAII  
UNIVERSITY OF HAWAII  
UNIVERSITY OF HAWAII AT MANOA  
COLLEGE OF TROPICAL AGRICULTURE AND HUMAN RESOURCES

KAUAI COUNTY  
POSITION ORGANIZATION CHART: XLI-T

KAUAI COUNTY  
COUNTY ADMINISTRATOR  
#89216

LIHUE  
Secretary II, SR-14, #04003  
KAPAA  
Clerk-Steno III, SR-11, #13872

TECHNICAL SUPPORT  
KAPAA  
Agr Res Tech VI, SR-18, #12753  
Agr Res Tech IV, SR-14, #12102, #12758  
Agr Res Tech III, SR-11, #12760, #12761

General Funds: 8.00

CHART UPDATED  
DATE JUL 01 2009

OFFICES OF THE ASSOCIATE DEANS  
AND ASSOCIATE DIRECTORS  
FOR RESEARCH AND COOPERATIVE EXTENSION

HAWAII COUNTY  
COUNTY ADMINISTRATOR, #89213

KOMOHANA  
Secretary II, SR-14, #13871  
Clerk-Steno III, SR-11, #09084  
Office Assistant III, SR-08, #00791

KONA  
Office Assistant IV, SR-10, #00797  
Kamuela  
Office Assistant IV, SR-10, #00799

TECHNICAL SUPPORT  
SEE CHART XLI-V

STATE OF HAWAII  
UNIVERSITY OF HAWAII  
UNIVERSITY OF HAWAII AT MANOA  
COLLEGE OF TROPICAL AGRICULTURE AND HUMAN RESOURCES

HAWAII COUNTY  
POSITION ORGANIZATION CHART: XLI-U

General Funds: 6.00

CHART UPDATED  
DATE JUL 01 2009

OFFICES OF THE ASSOCIATE DEANS  
AND ASSOCIATE DIRECTORS  
FOR RESEARCH AND COOPERATIVE EXTENSION

STATE OF HAWAII  
UNIVERSITY OF HAWAII  
UNIVERSITY OF HAWAII AT MANOA  
COLLEGE OF TROPICAL AGRICULTURE AND HUMAN RESOURCES

HAWAII COUNTY - TECHNICAL SUPPORT  
POSITION ORGANIZATION CHART: XLI-V

HAWAII COUNTY  
COUNTY ADMIN, #89213  
Educational Spec, PBB, #80311

WEST HAWAII  
Agr Res Tech VI, SR-18, #13530

EAST HAWAII  
Agr Res Tech VI, SR-18, #12099

MEALANI  
Agr Res Tech V, SR-16, #13534  
Agr Res Tech IV, SR-14, #12100, #14590  
Agr Res Tech III, SR-11, #13205, #13709  
#44868, #44867

WAIAKEA  
Agr Res Tech V, SR-16, #12101, #12094, #14166  
Agr Res Tech IV SR-14, #12096, #12766, #12767, #14168  
Agr Res Tech III, SR-11, #17602, #12098, #15497  
Building Maintenance Worker I, BC-09, #12095

HAMAKUA  
Agr Res Tech III, SR-11, #13536

VOLCANO  
Agr Res Tech V, SR-16, #13206  
Agr Res Tech IV, SR-14, #12097

KONA  
Agr Res Tech V, SR-16, #00409  
Agr Res Tech IV, SR-14, #22912

MALAMA-KI  
Agr Res Tech III, SR-11, #12765

General Funds: 28.00

CHART UPDATED  
DATE JUL 01 2009

OFFICES OF THE ASSOCIATE DEANS  
AND ASSOCIATE DIRECTORS  
FOR RESEARCH AND COOPERATIVE EXTENSION

STATE OF HAWAII  
UNIVERSITY OF HAWAII  
UNIVERSITY OF HAWAII AT MANOA  
COLLEGE OF TROPICAL AGRICULTURE AND HUMAN RESOURCES

MAUI COUNTY  
POSITION ORGANIZATION CHART: XLI-W

MAUI COUNTY  
COUNTY ADMINISTRATOR, #89215

KAHULUI  
Secretary II, SR-14, #00792  
Office Assistant III, SR-08, #42422\*  
KULA  
Office Assistant IV, SR-10, #13714  
MOLOKAI  
Office Assistant III, SR-08, #28798

TECHNICAL SUPPORT  
KULA  
Agr Res Tech VI, SR-18, #00415  
Agr Res Tech V, SR-16, #12901  
Agr Res Tech IV, SR-14, #00436, #12897, #12898,  
#12899, #12902\*  
Agr Res Tech III, SR-11, #00404, #00406, #12900  
MOLOKAI  
Agr Res Tech IV, SR-14, #36749

\*To be reclassified  
General Funds: 16.00

CHART UPDATED  
DATE JUL 01 2009