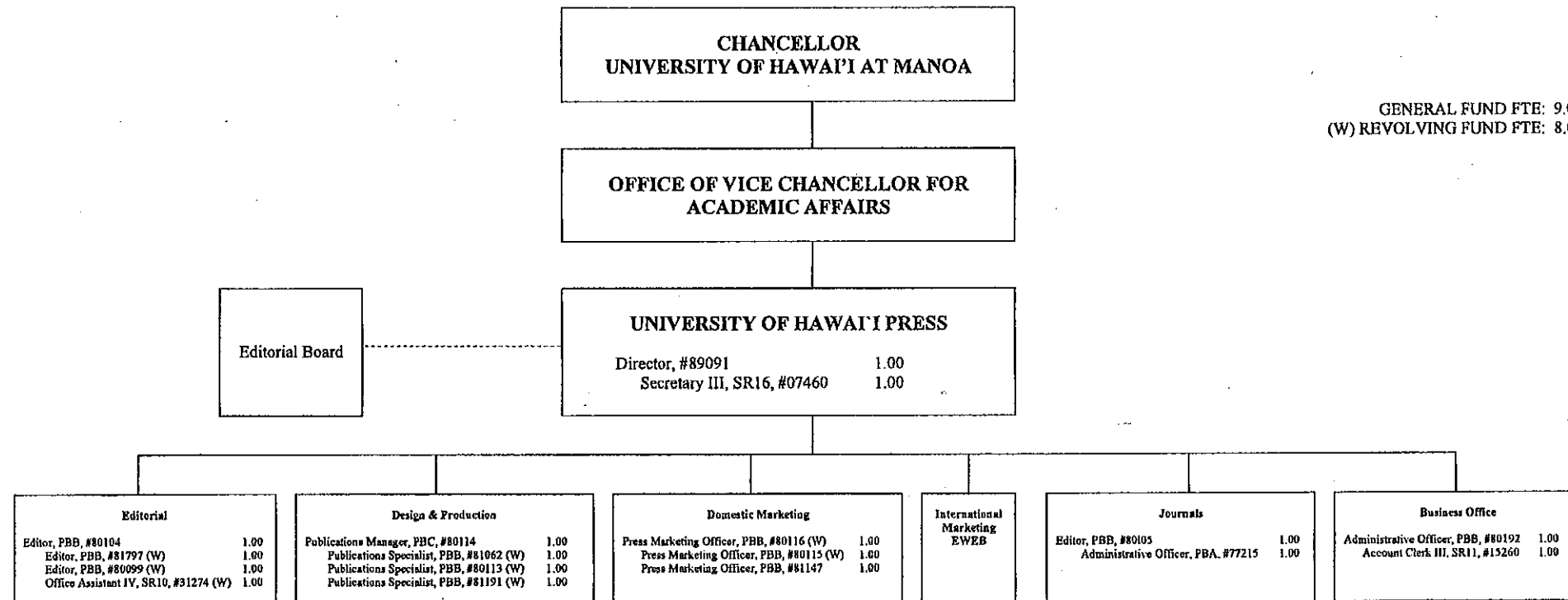


State of Hawai'i  
 University of Hawai'i  
 University of Hawai'i at Mānoa  
 OFFICE OF THE CHANCELLOR  
 OFFICE OF THE VICE CHANCELLOR  
 FOR ACADEMIC AFFAIRS  
 UNIVERSITY OF HAWAII PRESS  
 Position Organization Chart  
 CHART V

GENERAL FUND FTE: 9.00  
 (W) REVOLVING FUND FTE: 8.00



**CHART UPDATED**  
 DATE JUL 01 2009