

Position Organization Chart

Chart I

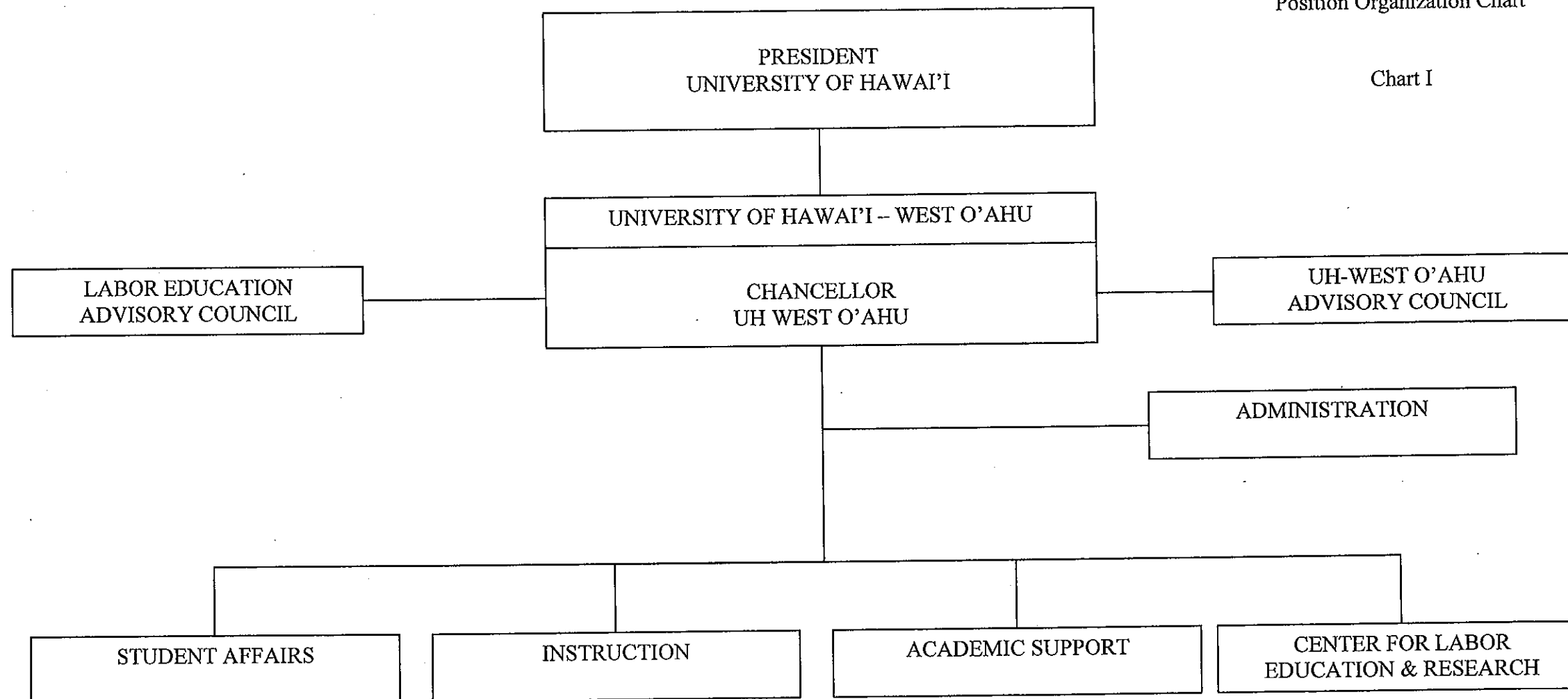


CHART UPDATED

DATE JUL 01 2009

State of Hawai'i  
University of Hawai'i  
University of Hawai'i - West O'ahu  
Office of the Chancellor

Position Organization Chart

Chart II

General Funds 5.00  
\*Special Funds 1.00 (Temporary)

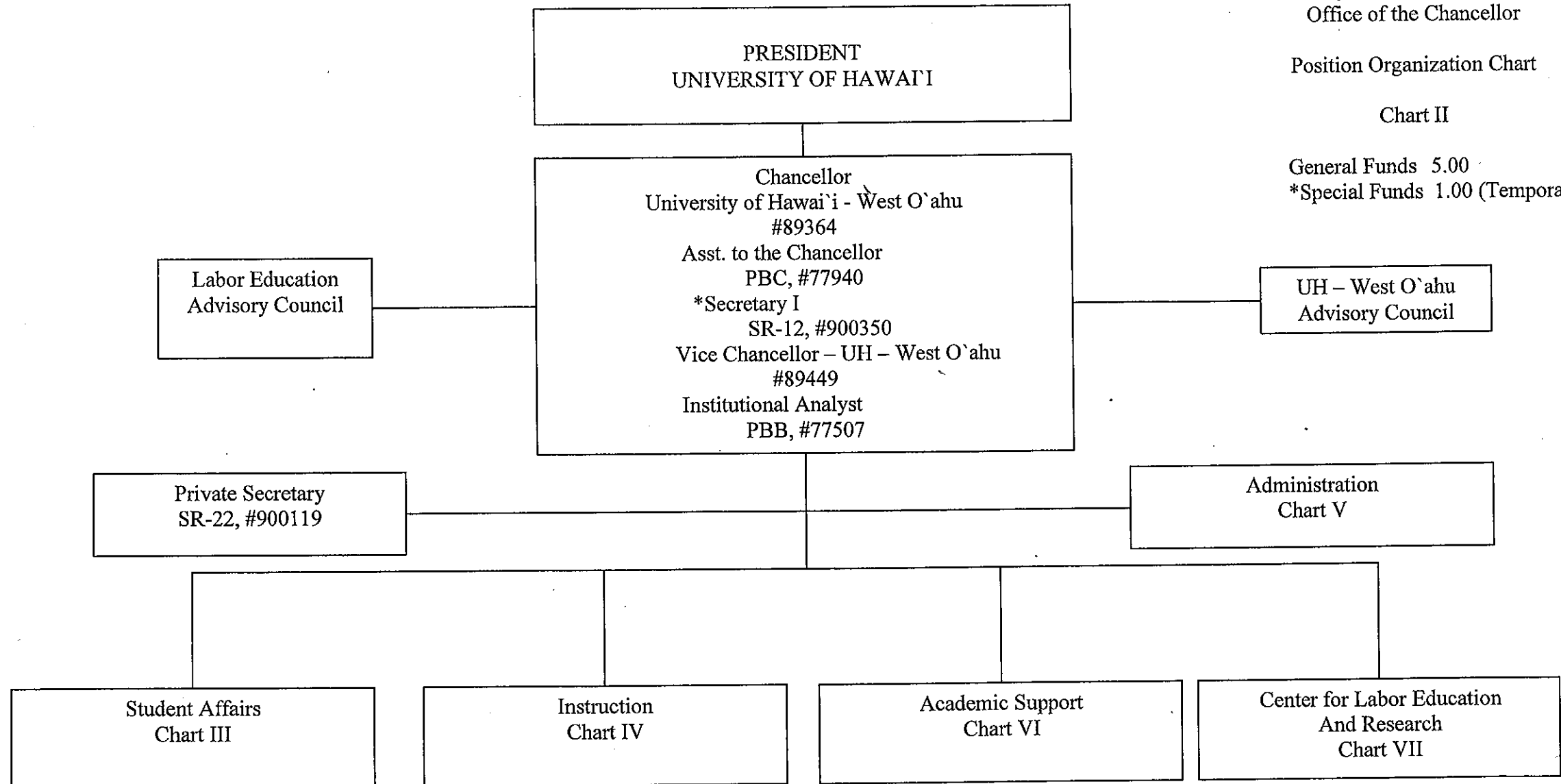


CHART UPDATED

DATE JUL 01 2009

State of Hawai'i  
University of Hawai'i  
University of Hawai'i - West O'ahu  
Student Affairs

Position Organization Chart

Chart III

General Funds 18.00

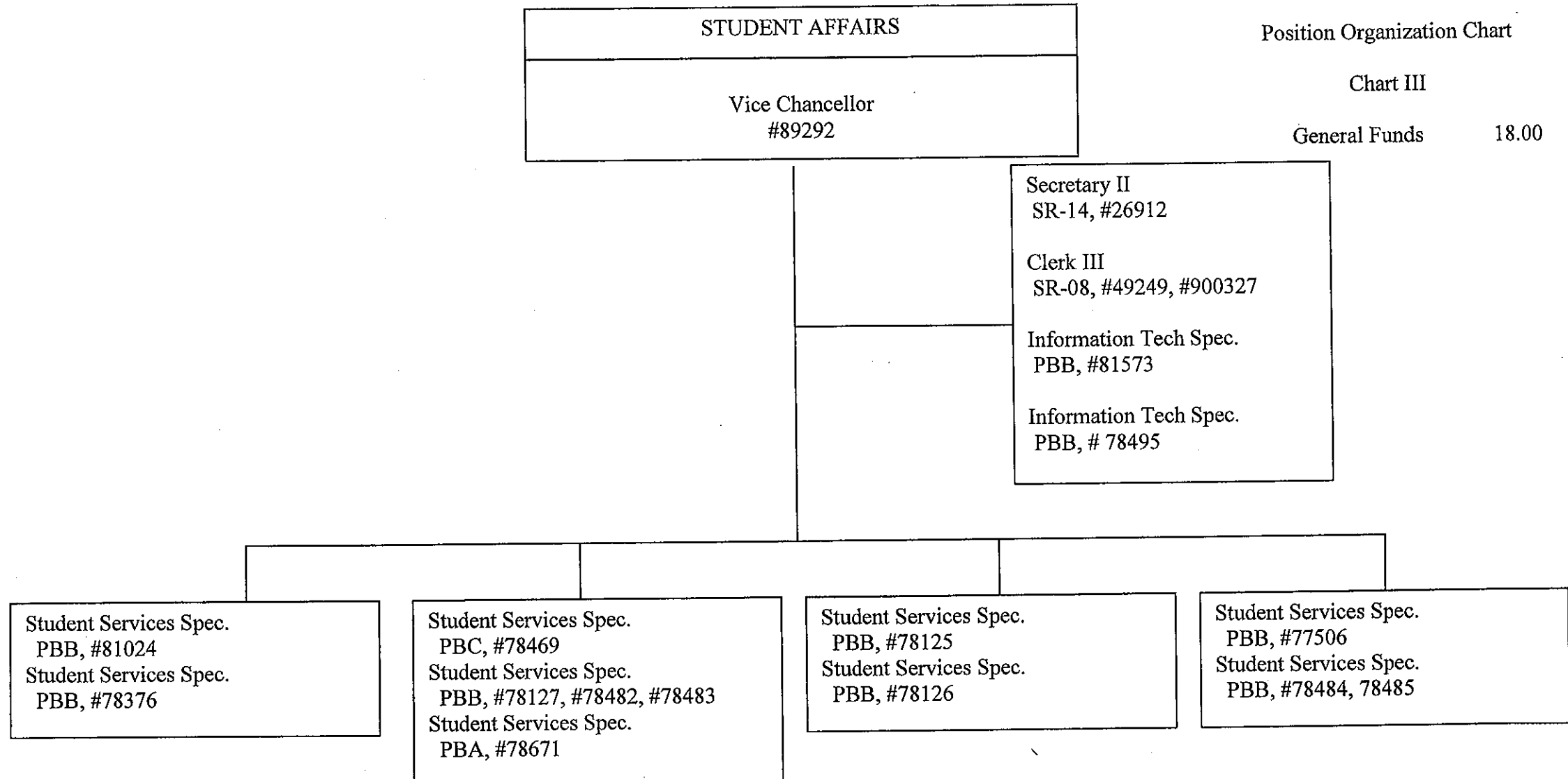


CHART UPDATED

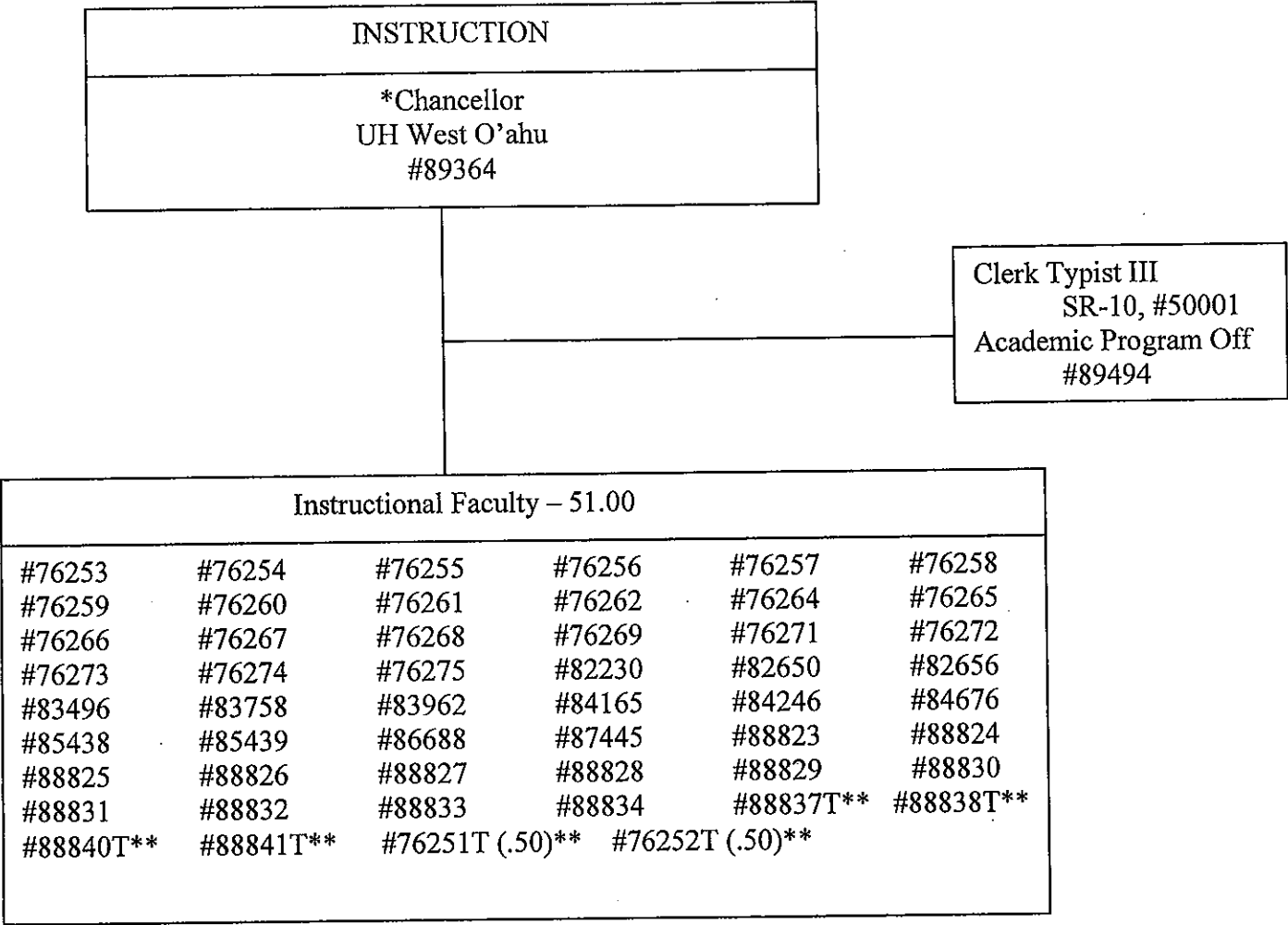
DATE JUL 01 2009

State of Hawai'i  
University of Hawai'i  
University of Hawai'i - West O'ahu  
Instruction

Position Organization Chart

Chart IV

General Funds 48.00  
\*\*Special Funds 5.00 (Temporary)



\*Position count not included on this page

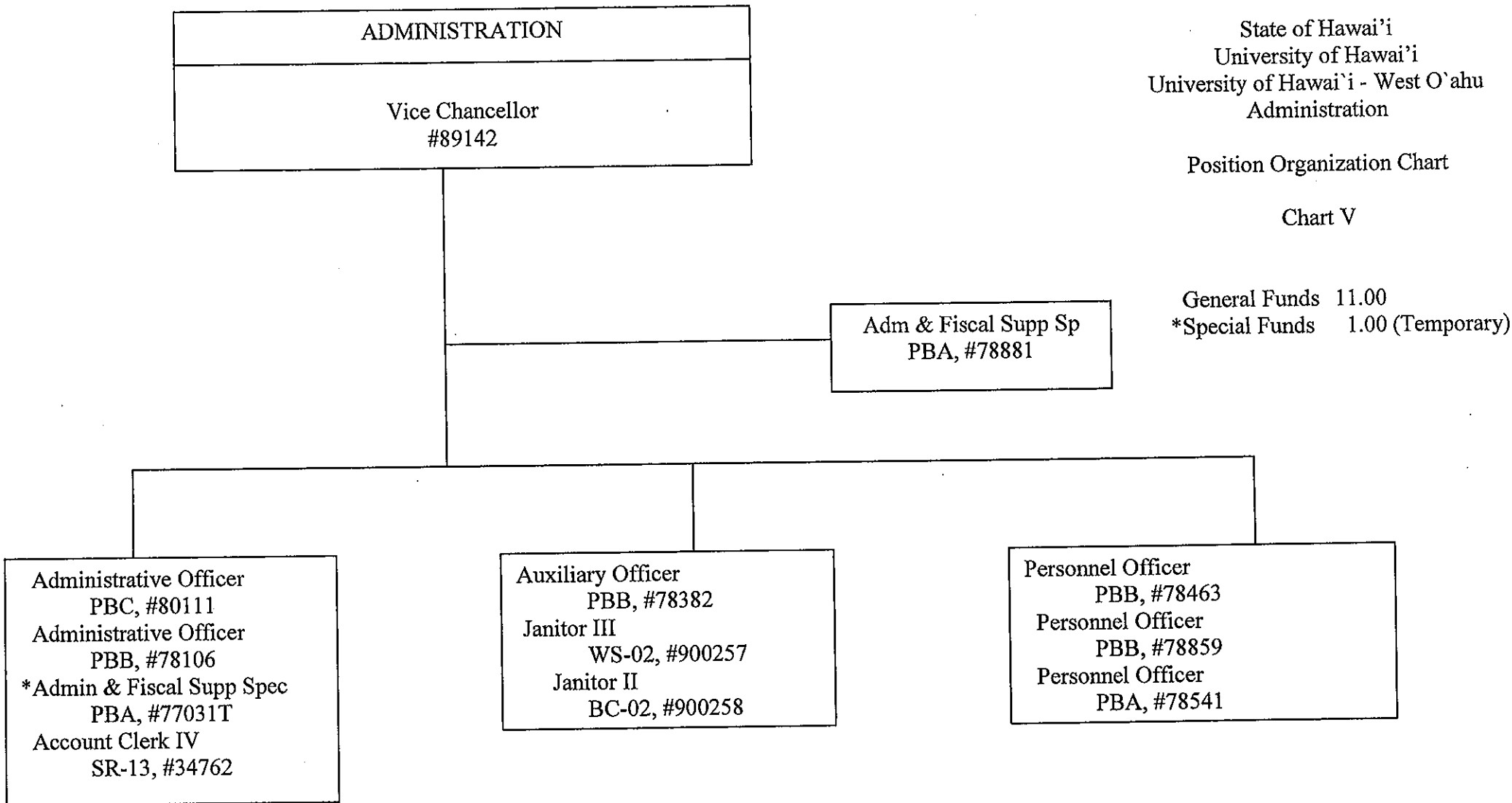


CHART UPDATED

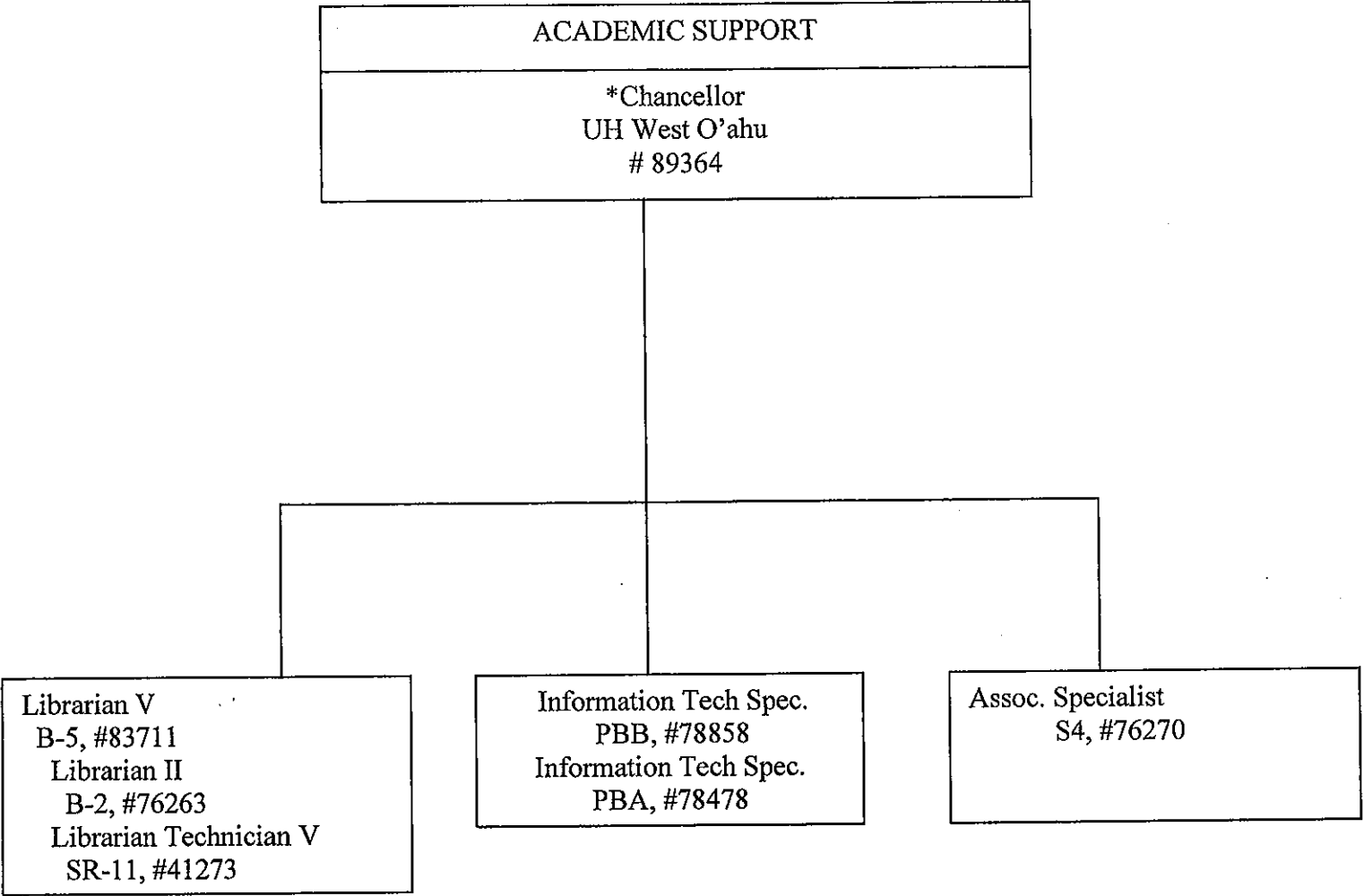
DATE JUL 01 2009

State of Hawai'i  
University of Hawai'i  
University of Hawai'i - West O'ahu  
Academic Support

Position Organization Chart

Chart VI

General Funds      6.00



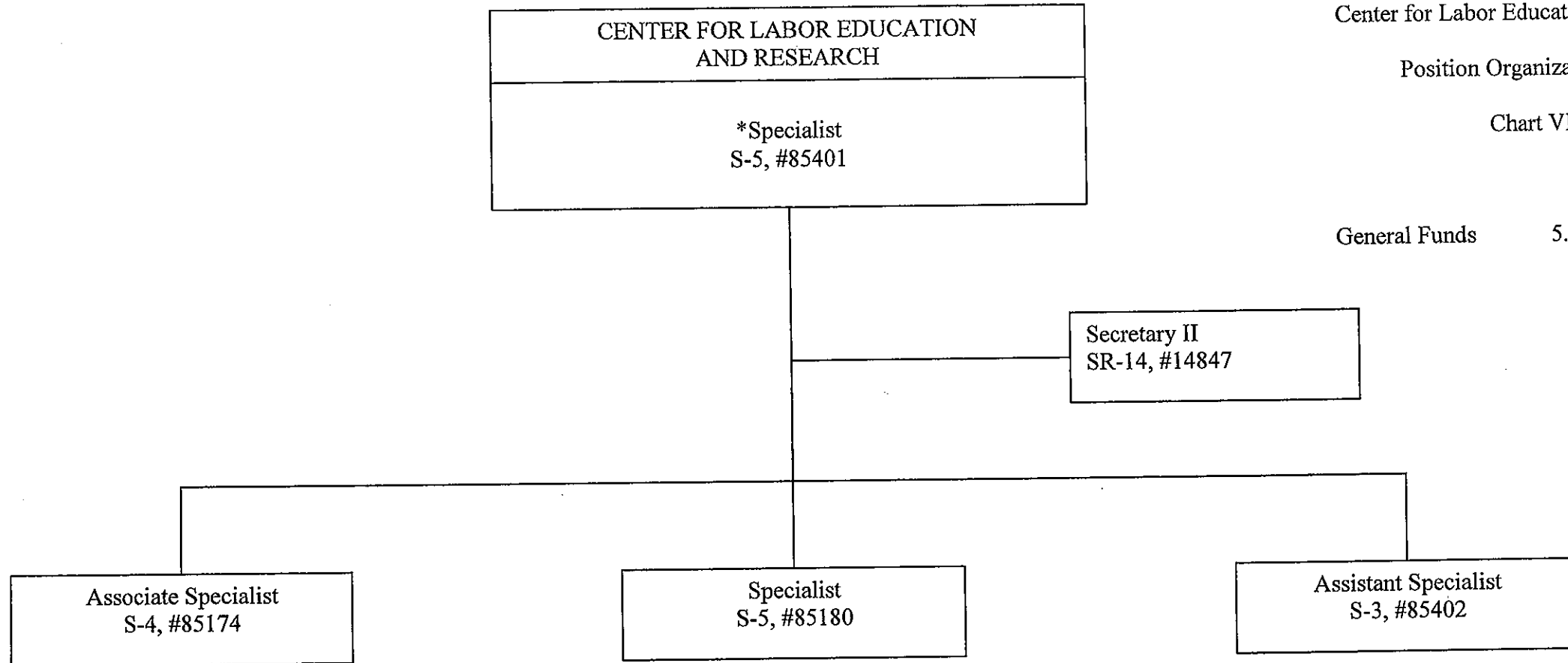
\* Position count not included on this page.

State of Hawai'i  
University of Hawai'i  
University of Hawai'i - West O'ahu  
Center for Labor Education and Research

Position Organization Chart

Chart VII

General Funds 5.00



\*Director

CHART UPDATED  
DATE JUL 01 2009