


UNIVERSITY
of HAWAII®
MĀNOA

RECEIVED

'10 FEB -2 P3:04

January 21, 2010

MANOA CHANCELLOR'S
OFFICEMEMORANDUMTO: Virginia S. Hinshaw
ChancellorVIA: Reed Dasenbrock 
Vice Chancellor for Academic AffairsFROM: Jerris Hedges, Dean 
Office of Dean of MedicineFROM: Chung Lee, Acting Dean 
College of Social SciencesSUBJECT: REORGANIZATION PROPOSAL FOR POPULATION STUDIES PROGRAM,
COLLEGE OF SOCIAL SCIENCES AND OFFICE OF PUBLIC HEALTH STUDIES,
JOHN A. BURNS SCHOOL OF MEDICINESPECIFIC ACTION REQUESTED:

We request your approval of the reorganization to move the Population Studies Program from the Department of Sociology in the College of Social Sciences to the Office of Public Health Studies in the John A. Burns School of Medicine.

RECOMMENDED EFFECTIVE DATE:

The effective date would be upon approval of this proposal.

ADDITIONAL COST:

There are no additional costs associated with this request.

PURPOSE:

The purpose of this reorganization is to move the Population Studies Program from the Department of Sociology in the College of Social Sciences to the Office of Public Health Studies in the John A. Burns School of Medicine. The program has not had any permanent FTE position assigned since 1998.

Throughout the years, faculty continued to commit their resources to the program; however, the University has not. Scholars in population studies are scattered across the university campus, East Center and the School of Medicine, making it difficult to collaborate and coordinate activities without adequate resources and staffing. With the internal reorganization of East West Center in 1993 and the budget cuts in 1993-1994, resources are not available to properly staff and continue the program in the College of Social Sciences.

As there already was a population specialization in the Office of Public Health Studies in the John A. Burns School of Medicine, in 2008 it was agreed that the certificate in global studies be broadened to include global health and population studies. There is no change to the organizational chart to the Office of Public Health Studies. The certificate program will be absorbed in its graduate program. No additional funds are required to offer the population studies certificate; the infrastructure already exists at the Office of Public Health Studies. The requested move does not require additional financial or staffing resources.

BACKGROUND:

Pursuant to APM A3.101, University of Hawaii, Organizational and Functional Changes dated March 2008, reorganizations that:

- a) do not have an impact on BOR policy and/or laws;
- b) do not create, eliminate, or significantly change responsibilities of programs reporting directly to the Board or President;
- c) do not incur significant additional expenses; or
- d) do not have significant programmatic impact on the University

may be approved under delegated authority by the Chancellor for reorganizations that are two (2) supervisory levels below (APM A3.101, Section 3b).

This reorganization proposal has been reviewed and discussed with appropriate units and staff members. The details of the reorganization are outlined in the attached proposal.

ACTION RECOMMENDED:

It is recommended that approval be given to move the Population Studies Program from the Department of Sociology in the College of Social Sciences to the Office of Public Health Studies in the John A. Burns School of Medicine.

If you have any questions, please contact Sheryl Nohara at ext. 66053 or at snohara@hawaii.edu. Thank you for your assistance.

Attachments

APPROVED/DISAPPROVED:


Virginia S. Hinshaw
Chancellor

4-29-10
Date

Attachment 6: Narrative Templates

Reorganization Proposal: College of Social Sciences, Population Studies Program and John A. Burns School of Medicine, Office of Public Health Studies University of Hawaii at Manoa

INTRODUCTION

The College of Social Sciences administers academic departments, programs, school and institutes. They include Anthropology, Communication, Economics, Ethnic Studies, Geography, Political Science, Psychology, Public Administration, Social Science Research Institute, Sociology, Urban and Regional Planning and Women's Studies. Currently the Department of Sociology reflects the Population Studies Program, a certificate program with no assigned permanent positions.

The Office of Public Health Studies, John A. Burns School of Medicine, is responsible for the curricular and academic programs as well as overall administration of the department. The population specialization has always been available in the Office of Public Health Studies. In 2008, the certificate in global studies was broadened to include global health and population studies. There is no change to the organizational chart for the Office of Public Health Studies, the certificate program will be absorbed in its graduate program. No additional financial or staffing resources are required to offer the population studies certificate; the infrastructure already exists at the Office of Public Health Studies.

BACKGROUND

The Population Studies Program started in 1969 with a concentration in population studies in Anthropology, Sociology, Geography, and Economics. The program drew heavily on the faculty and students from the East West Center Population Institute. By 1975, the interdisciplinary specialization in population had become a graduate certificate program. The program required 10 core credits, six elective credits and either a research paper of publishable quality on a population topic or a comprehensive examination.

With the internal reorganization of East West Center in 1993, there was a decline in the number of graduate affiliate faculty participation and number of students with EWC graduate fellowships in population studies. In addition, the College of Social Sciences withdrew the budget for population studies in response to budget cuts at the university in 1993-1994. Faculty continued to commit their resources to the program while the University had not.

In a review of the certificate program in 1997, the report noted that there are no FTE's associated with the program and since Population studies offers its own courses, the limited availability of instructional resources was affecting the program. The review panel recommended that the program be provided with a program office, .5 FTE faculty director and 1.5FTE instructional faculty. It was also recommended the certificate program continue to be available only to those students already admitted to graduate degree programs.

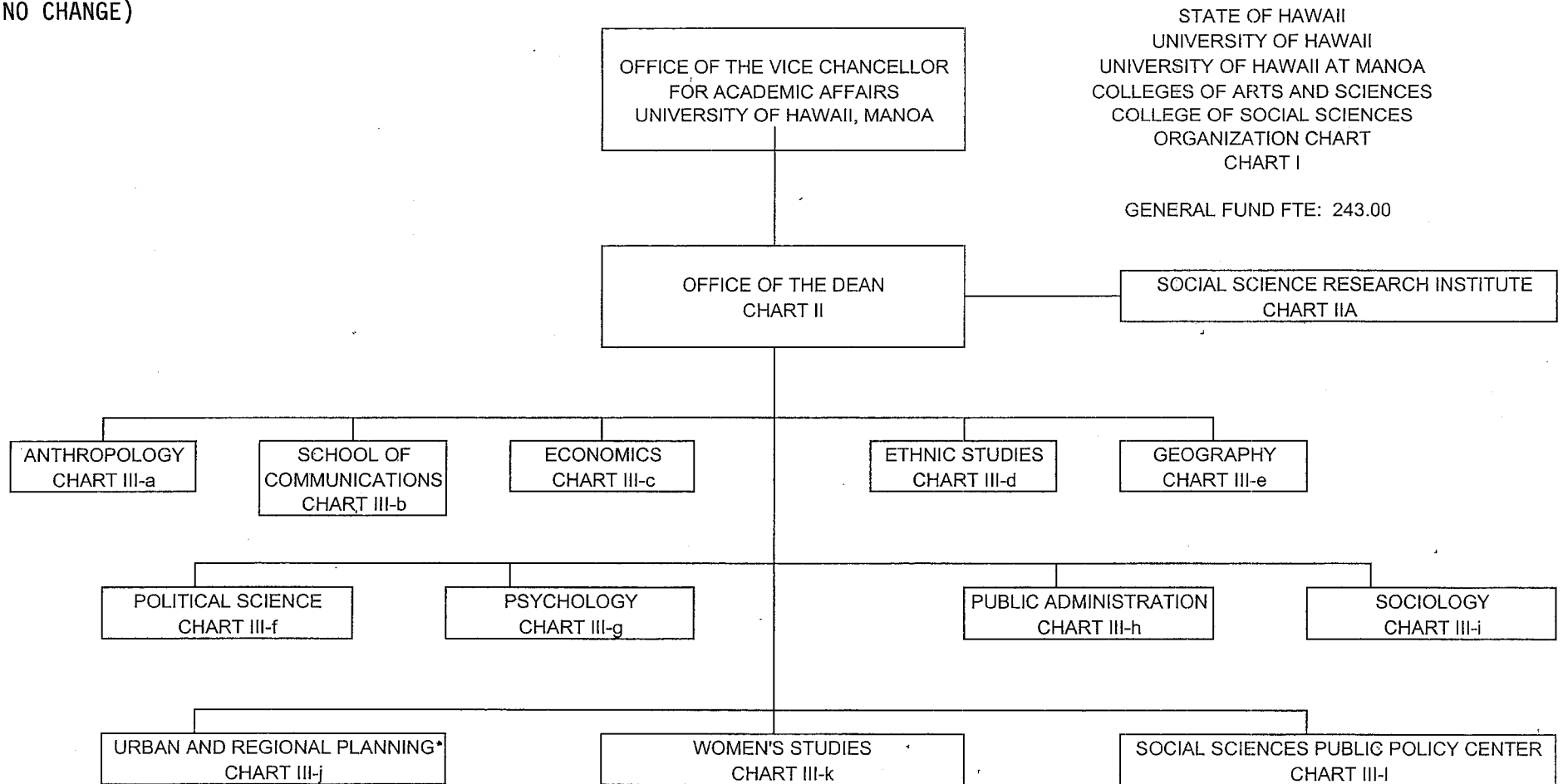
While no financial resources were provided, the faculty continued to offer the courses in order for students to earn the graduate certificate. In 2006, three (3) certificates were awarded.

The participating faculty in population studies are scattered across the UH campus. In addition to scholars at the College of Social Sciences and East West Center, there already was a population specialization in the Office of Public Health Studies in the John A. Burns School of Medicine. After discussions, in 2008, the certificate in global studies was broadened to include global health and population studies.

No additional funds are required to administer the population studies program; the infrastructure already exists at the Office of Public Health Studies. The requested move does not require additional financial or staffing resources. The requested change does not create, eliminate, or significantly change the responsibilities of the program. The proposed change does not have a significant programmatic impact on the University.

PROPOSED
ORGANIZATIONAL CHARTS
AND
FUNCTIONAL STATEMENTS

PROPOSED
(NO CHANGE)



APPROVED:

Virginia S. Hinshaw Date
Chancellor, University of Hawaii

PROPOSED

OFFICE OF THE DEAN

STATE OF HAWAII
UNIVERSITY OF HAWAII
UNIVERSITY OF HAWAII AT MANOA
COLLEGES OF ARTS AND SCIENCES
COLLEGE OF SOCIAL SCIENCES
DEPARTMENT OF SOCIOLOGY

POSITION ORGANIZATION CHART

CHART III-I

DEPARTMENT OF SOCIOLOGY					
Chair (appointed from faculty positions)					
Secretary II, SR-14, #13485					1.00
Adm & Fiscal Support Sp, PBA, #77562					1.00
Faculty Positions:					17.50
<u>Full time:</u> #82084, 82097, 82204, 82207, 82602,					
82605, 83713, 84076, 84237, 84286,					
84456, 84504, 84575, 84616, 84642,					
84827, 85806					
<u>Part time:</u> #84823 (.50)					
Graduate Assistants:					4.00
#88008, 88100, 88182, 88408, 88485,					
88498, 88533, 88616					
					23.50

General Funds 23.50

APPROVED:

Virginia S. Hinshaw
Chancellor, University of Hawaii

Date

4-29-10

UNIVERSITY OF HAWAII
UNIVERSITY OF HAWAII AT MANOA
COLLEGE OF ARTS AND SCIENCES
COLLEGE OF SOCIAL SCIENCES

FUNCTIONAL STATEMENT

OFFICE OF THE DEAN

Plans, organizes, directs and coordinates the activities, curricular, personnel and budget affairs of the College and its ancillary support components including budget management, program management, staff supervision, community relations, grievance and litigation, and travel. Has oversight responsibility for the activities, research functions and program management of the Social Science Research Institute.

Articulates and conveys to faculty, staff, students and others the College's basic values, directions and goals, and develops and issues policies governing the activities of the College.

Guides and oversees the College's governance system, to ensure effective operation and equal access by all members of the College community.

Manages day-to-day College operations and activities, and represents the College within the University and to the Hawaii community at large.

Participates with the Deans of the College of Arts and Humanities, the College of Languages, Linguistics and Literature, and the College of Natural Sciences in the Council of Arts and Sciences Deans, a body which is responsible for the planning and coordination of the Colleges of Arts and Sciences programs.

Reports to the Office of the Vice Chancellor for Academic Affairs, University of Hawaii at Manoa and functions with the authority delegated by the Chancellor.

Administers academic departments, programs, school and institutes in the College of Social Sciences.

1. Anthropology (department)
2. Communications (school)
3. Economics (department)
4. Ethnic Studies (department)
5. Geography (department)
6. Political Science (department)
7. Psychology (department)
8. Public Administration (program)
9. Social Science Research Institute
10. Sociology (department)
11. Social Sciences Public Policy Center
12. Urban and Regional Planning (department)
13. Women's Studies (program)