

STATE OF HAWAII
UNIVERSITY OF HAWAII
HAWAII COMMUNITY COLLEGE

Organization Chart

Chart I

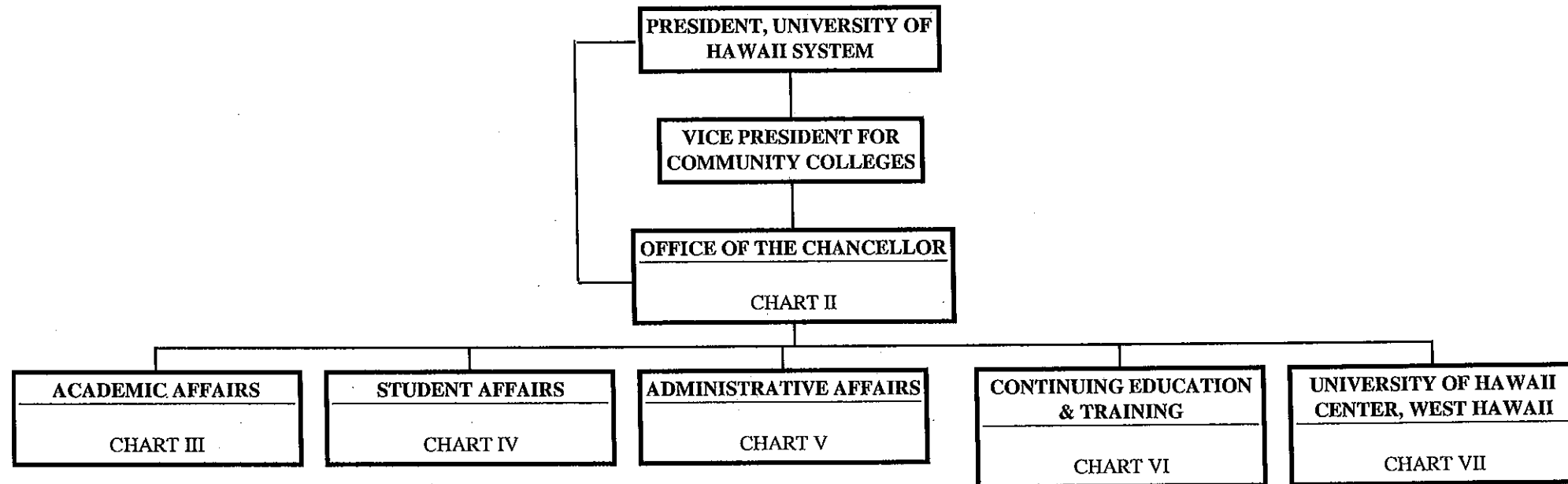


CHART UPDATED

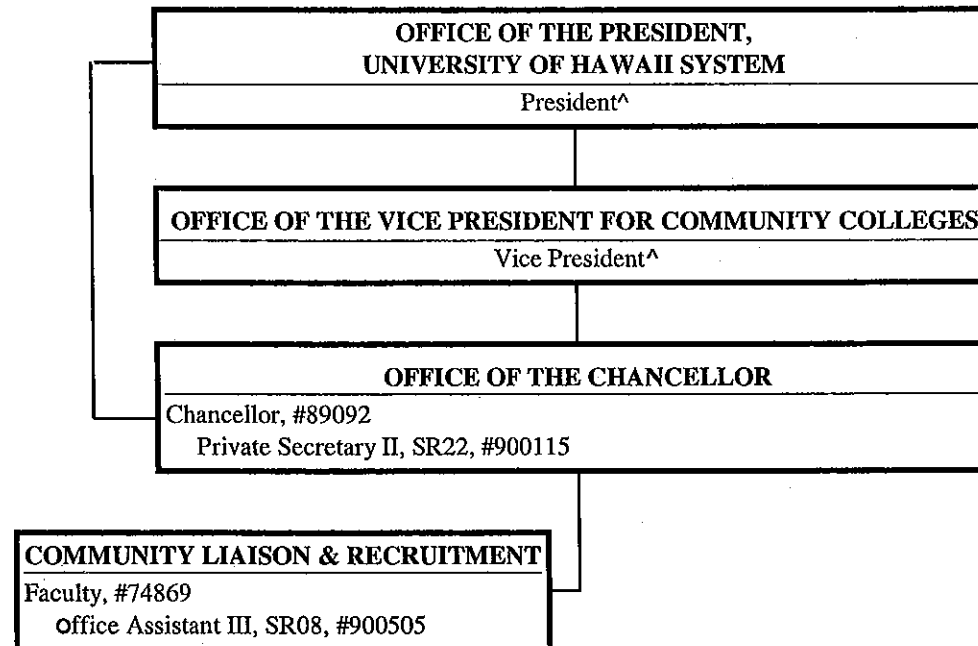
DATE JUL 01 2010

| | <u>Perm</u> | <u>Temp</u> |
|-------------------|-------------|-------------|
| General Fund | 220.00 | 5.00 |
| (B) Special Funds | 1.00 | |

STATE OF HAWAII
UNIVERSITY OF HAWAII
HAWAII COMMUNITY COLLEGE
OFFICE OF THE CHANCELLOR

Position Organization Chart

Chart II



^ Excluded from position count this chart

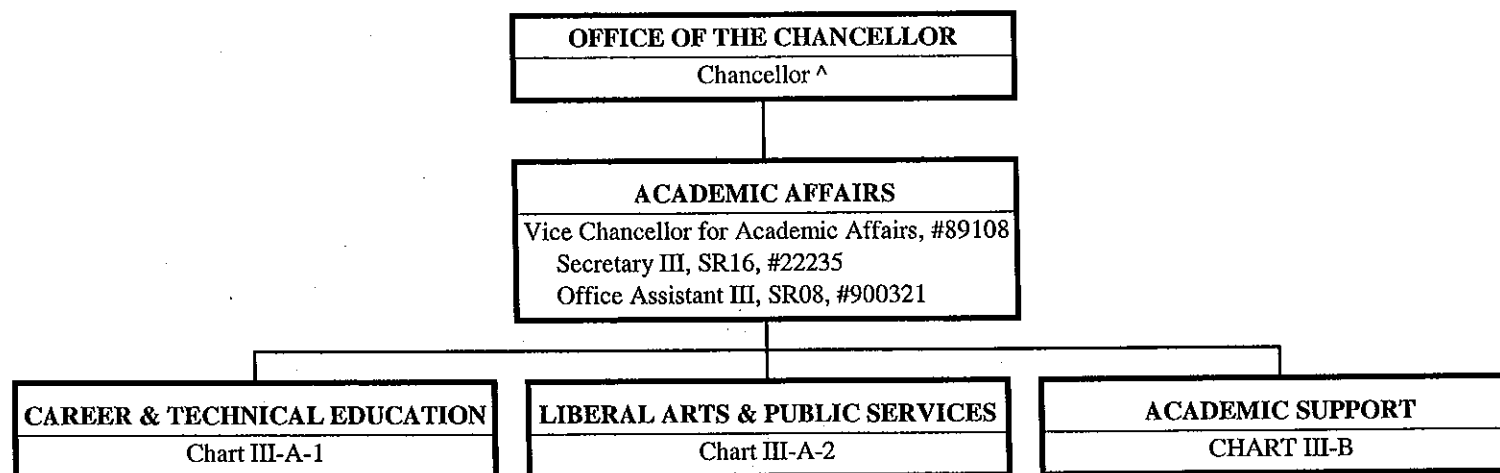
CHART UPDATED
DATE JUL 01 2010

General Fund Perm
4.00

STATE OF HAWAII
UNIVERSITY OF HAWAII
HAWAII COMMUNITY COLLEGE
ACADEMIC AFFAIRS

Position Organization Chart

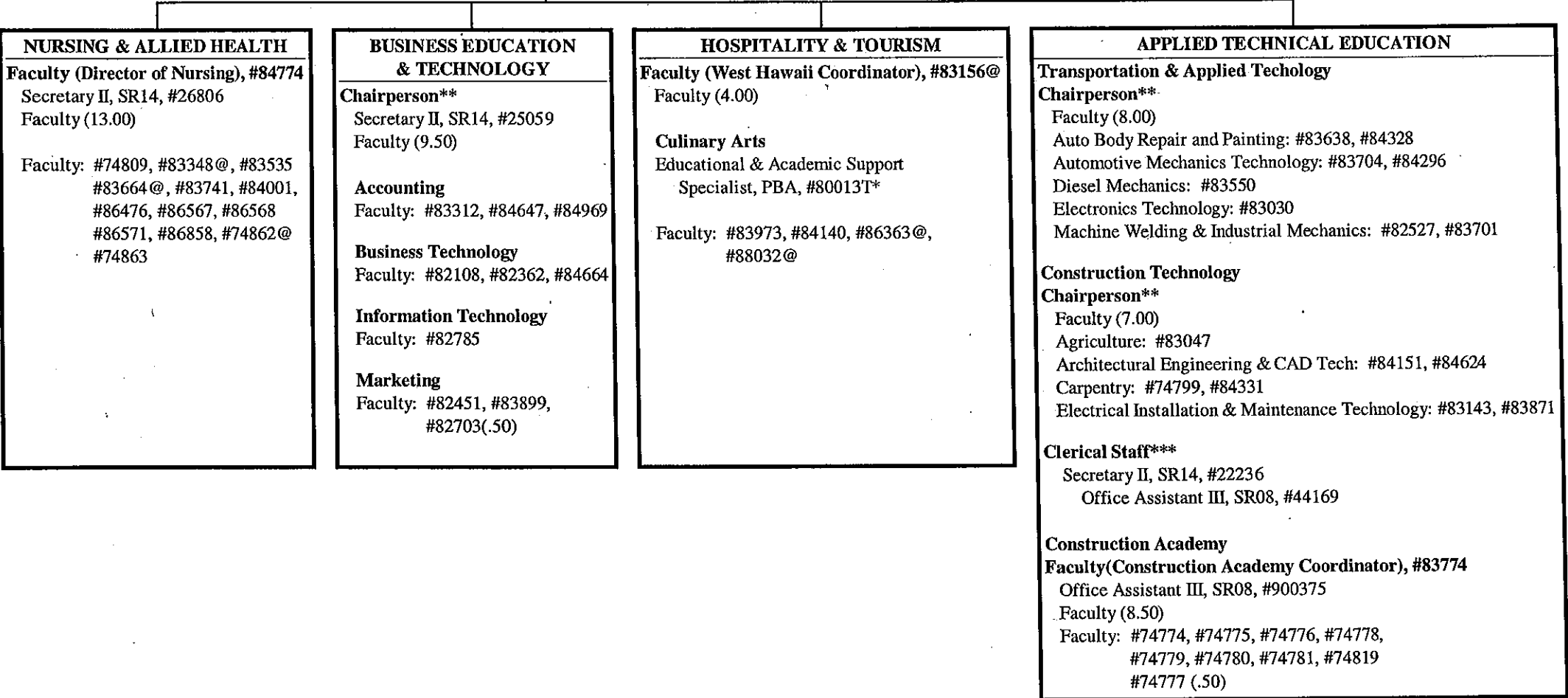
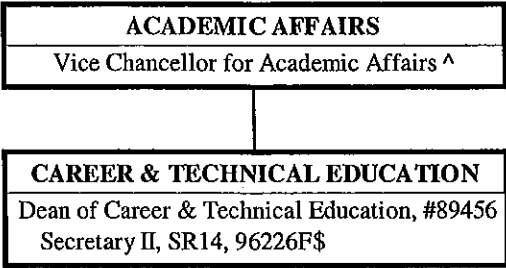
Chart III



^ Excluded from position count this chart

CHART UPDATED
DATE JUL 01 2010

General Fund Perm
3.00

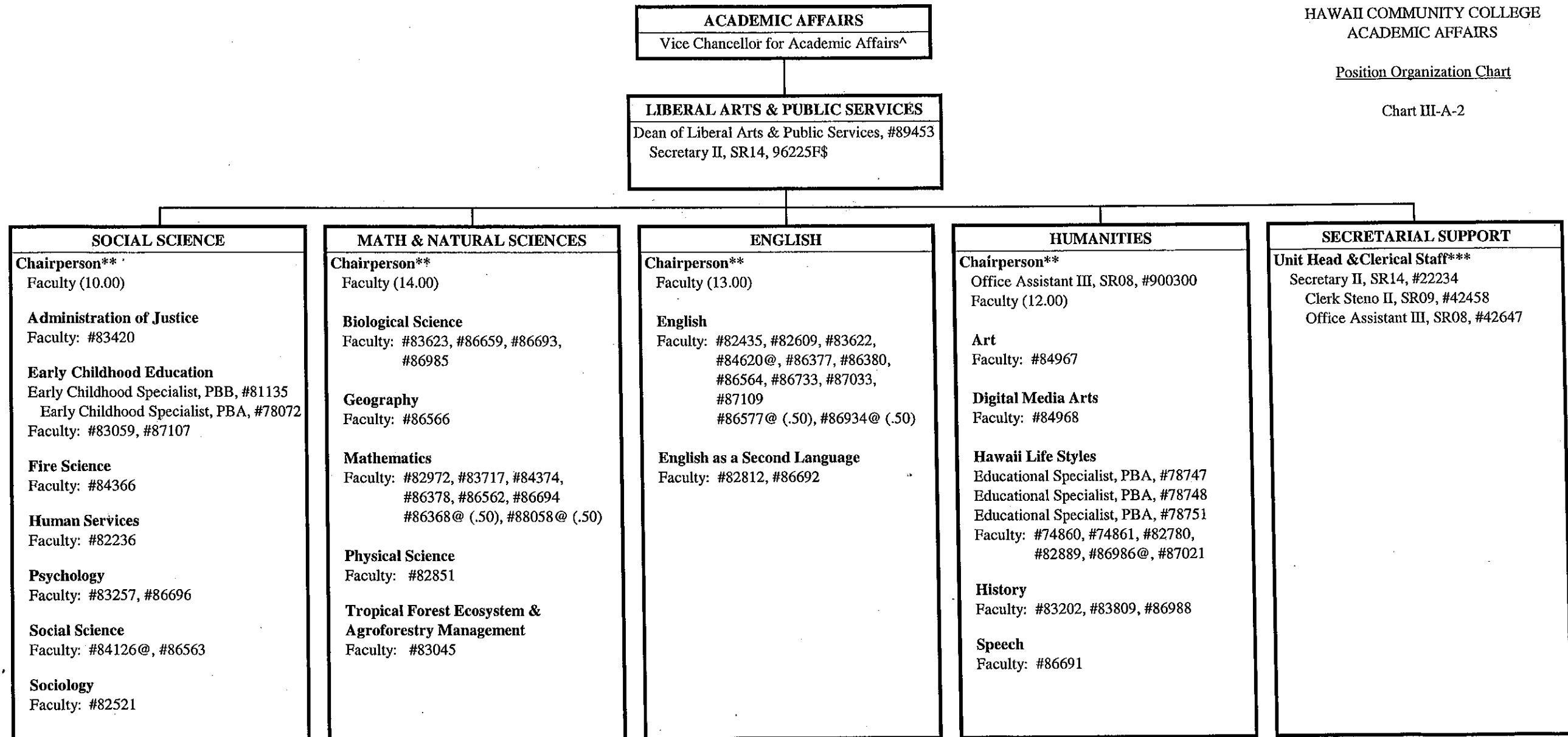


^ Excluded from position count this chart
* Temporary Position
** Chairperson is appointed from among faculty positions within the department.
*** Clerical staff serve all units in the division but each position has only one immediate supervisor.
@Position located at University of Hawaii Center, West Hawaii
\$ To be established

STATE OF HAWAII
UNIVERSITY OF HAWAII
HAWAII COMMUNITY COLLEGE
ACADEMIC AFFAIRS

Position Organization Chart

Chart III-A-2



^Excluded from position count this chart

*Temporary Position

**Chairperson is appointed from among faculty positions within the department

***Clerical staff serve all units in the division but each position has only one immediate supervisor

@Position located at University of Hawaii Center, West Hawaii

\$ To be established

CHART UPDATED

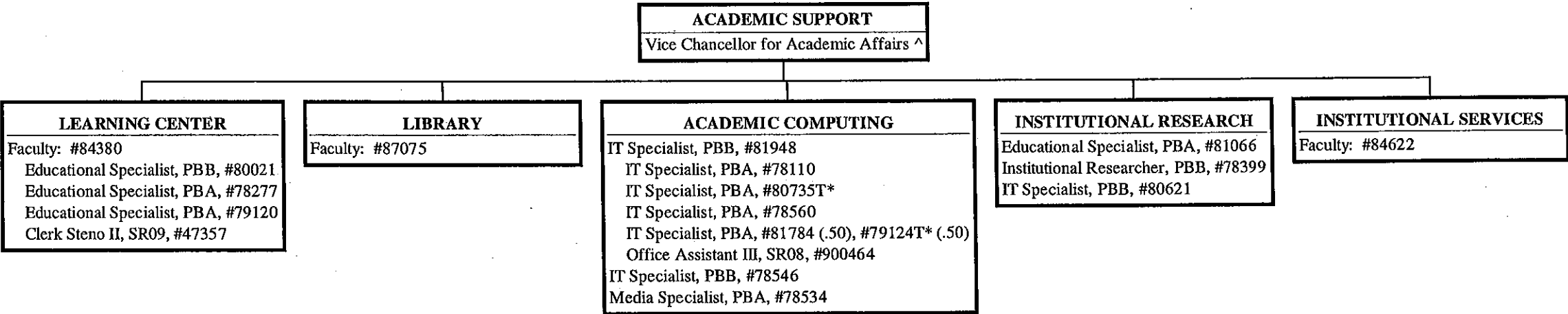
DATE JUL 01 2010

General Fund Perm
60.00

STATE OF HAWAII
UNIVERSITY OF HAWAII
HAWAII COMMUNITY COLLEGE
ACADEMIC SUPPORT

Position Organization Chart

Chart III-B



^ Excluded from position count this chart
* Temporary Position

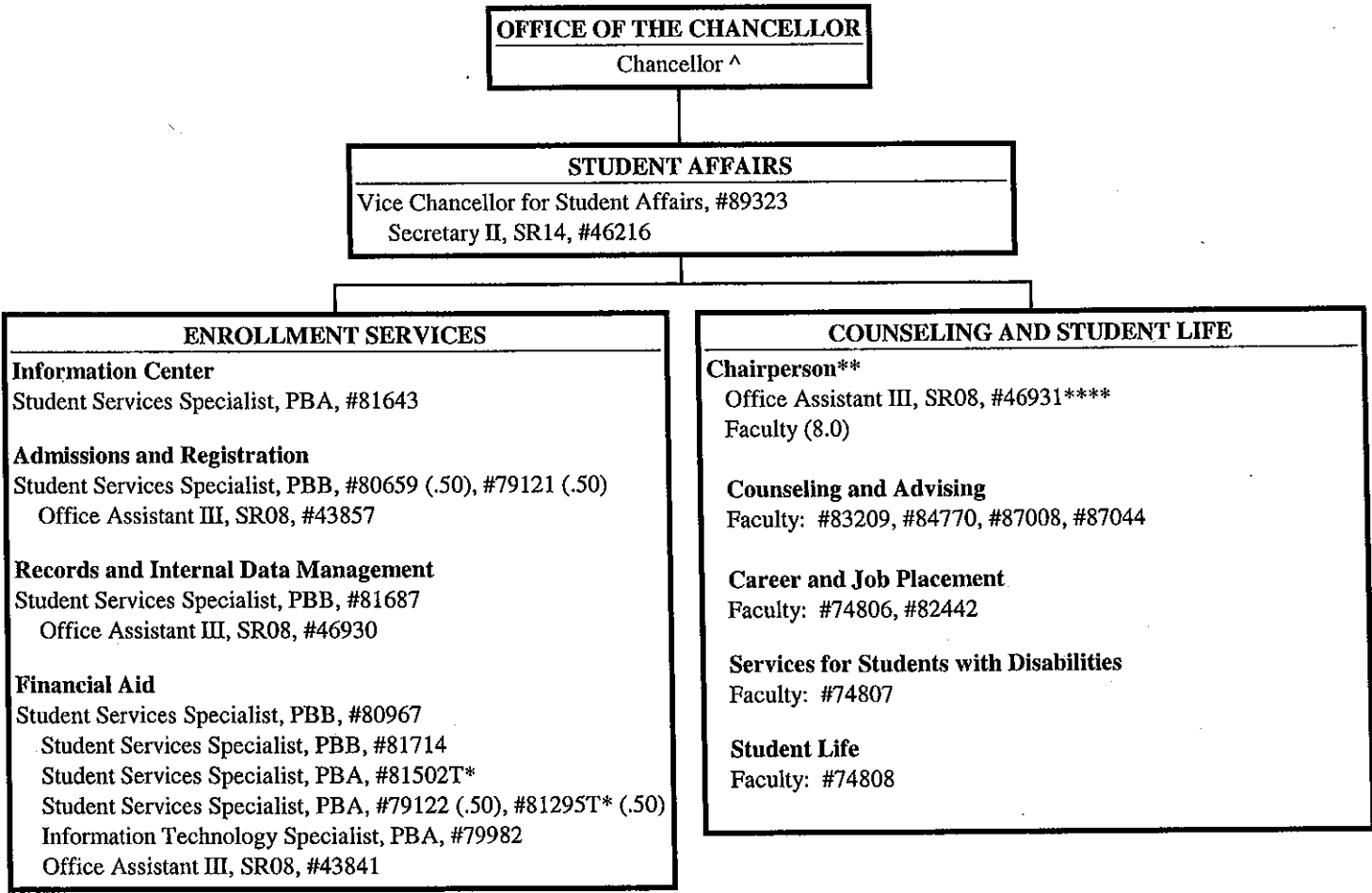
CHART UPDATED
DATE JUL 01 2010

| | Perm | Temp |
|--------------|-------|------|
| General Fund | 16.50 | 1.50 |

STATE OF HAWAII
UNIVERSITY OF HAWAII
HAWAII COMMUNITY COLLEGE
STUDENT AFFAIRS

Position Organization Chart

Chart IV



^ Excluded from position count this chart
* Temporary Position
**Chairperson is appointed from among faculty positions within the dept
**** Clerk Typist reports to the senior faculty of Counseling & Student Life

CHART UPDATED

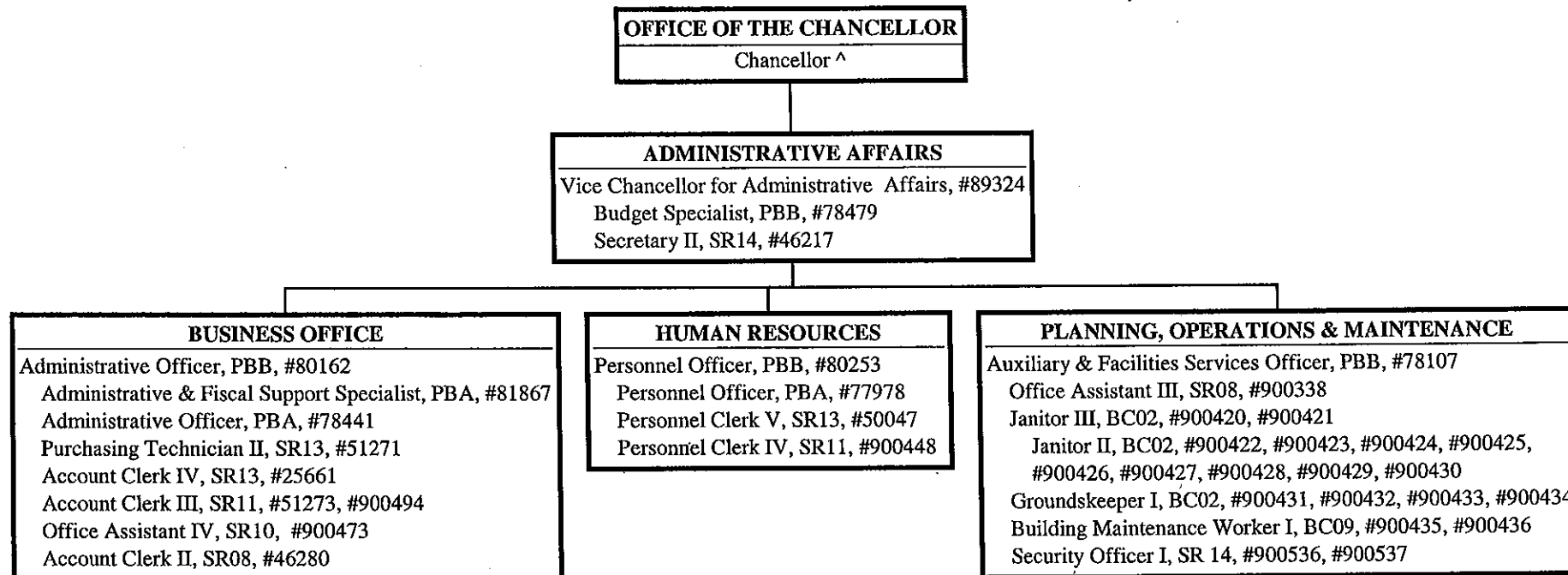
DATE: JUL 01 2010

| | Perm | Temp |
|--------------|-------|------|
| General Fund | 20.50 | 1.50 |

STATE OF HAWAII
UNIVERSITY OF HAWAII
HAWAII COMMUNITY COLLEGE
ADMINISTRATIVE AFFAIRS

Position Organization Chart

Chart V



^ Excluded from position count this chart
\$ To be established

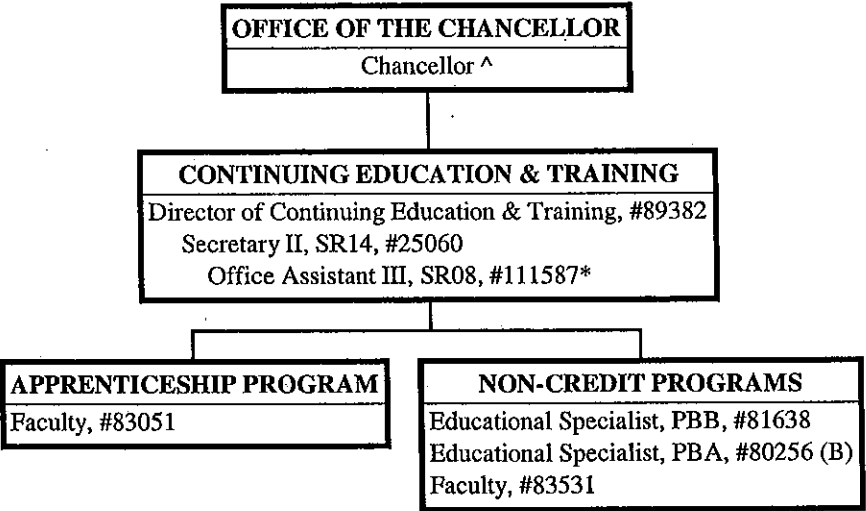
CHART UPDATED
DATE JUL 01 2010

Perm
General Fund 37.00

STATE OF HAWAII
UNIVERSITY OF HAWAII
HAWAII COMMUNITY COLLEGE
CONTINUING EDUCATION & TRAINING

Position Organization Chart

Chart VI



^ Excluded from position count this chart
* Temporary Position

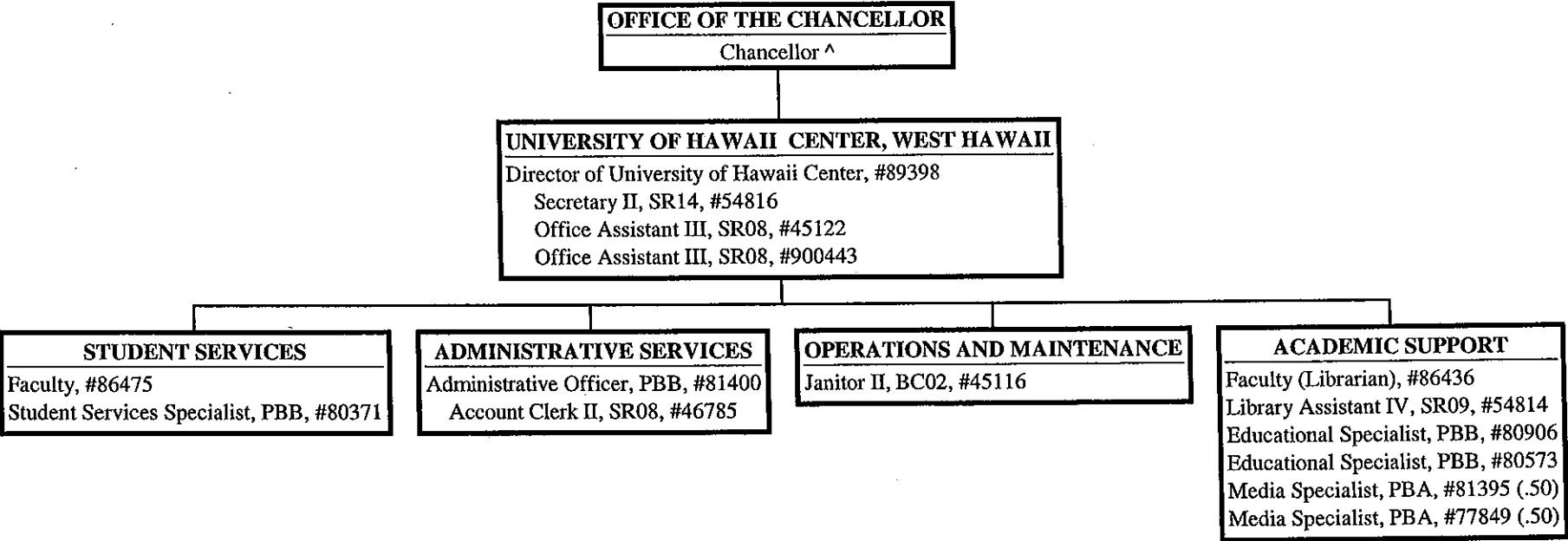
CHART UPDATED
DATE JUL 01 2010

| | Perm | Temp |
|-------------------|------|------|
| General Fund | 5.00 | 1.00 |
| (B) Special Funds | 1.00 | |

STATE OF HAWAII
UNIVERSITY OF HAWAII
HAWAII COMMUNITY COLLEGE
UNIVERSITY OF HAWAII CENTER, WEST HAWAII

Position Organization Chart

Chart VII



^ Excluded from position count this chart
\$ To be established

CHART UPDATED
DATE JUL 01 2010

General Fund Perm
14.00