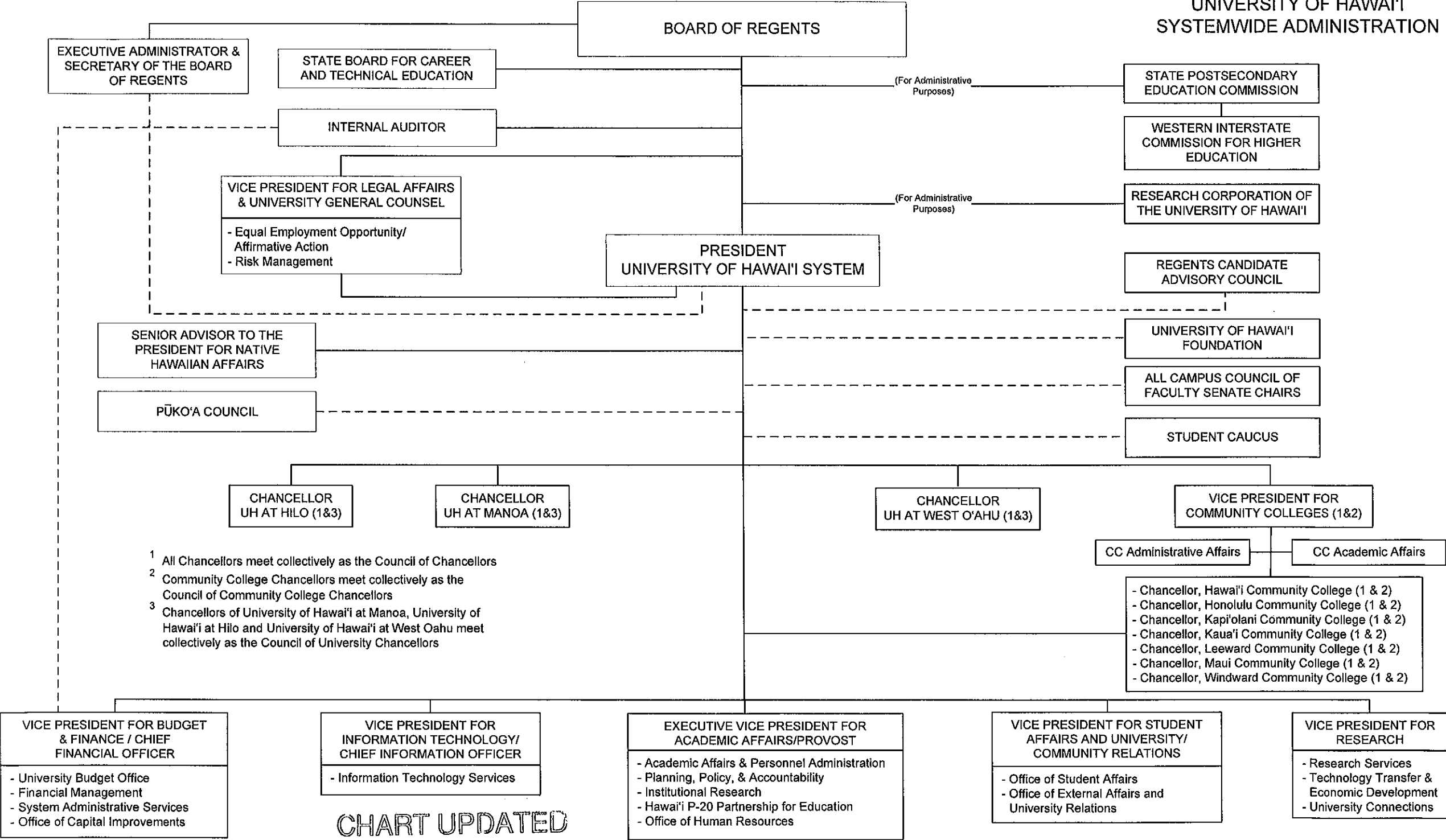
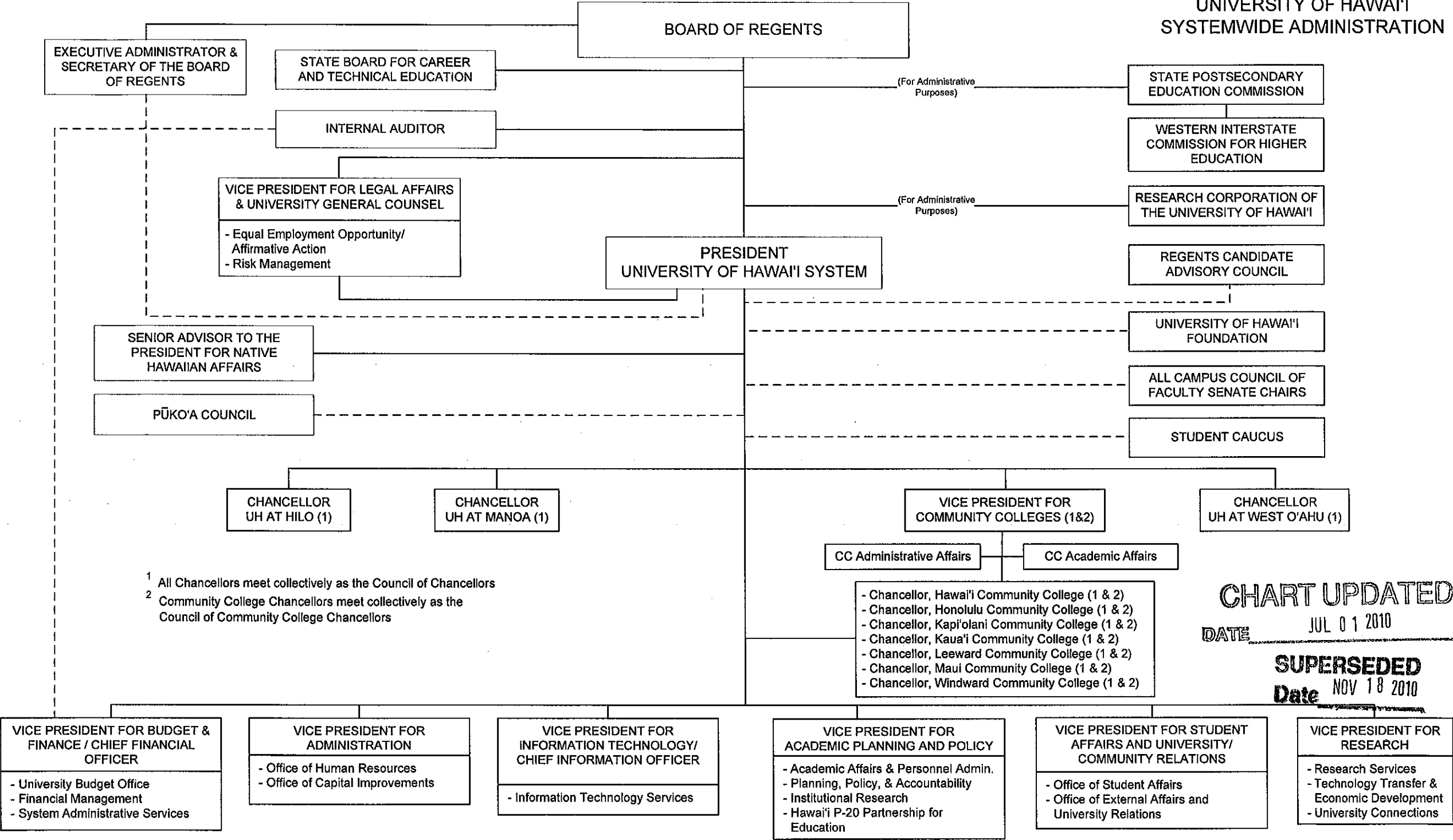


STATE OF HAWAI'I  
UNIVERSITY OF HAWAI'I  
SYSTEMWIDE ADMINISTRATION



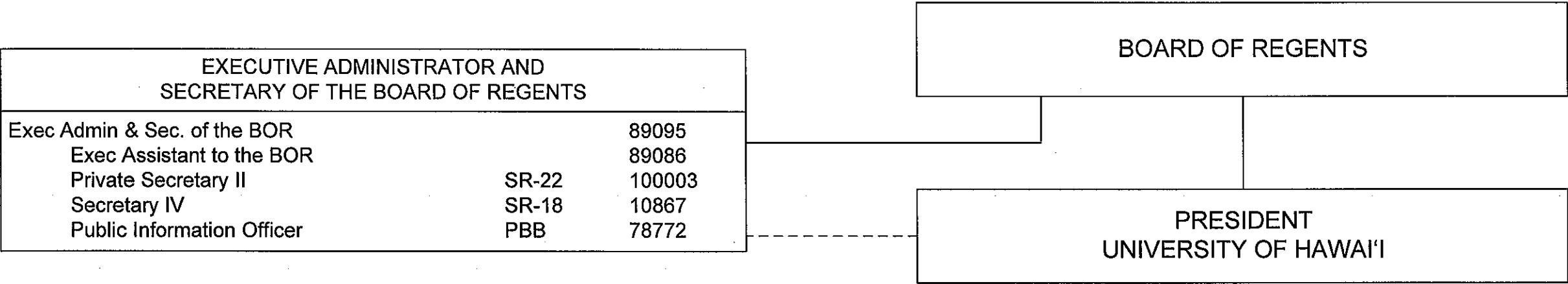
<sup>1</sup> All Chancellors meet collectively as the Council of Chancellors  
<sup>2</sup> Community College Chancellors meet collectively as the Council of Community College Chancellors  
<sup>3</sup> Chancellors of University of Hawai'i at Manoa, University of Hawai'i at Hilo and University of Hawai'i at West Oahu meet collectively as the Council of University Chancellors

STATE OF HAWAII  
UNIVERSITY OF HAWAII  
SYSTEMWIDE ADMINISTRATION



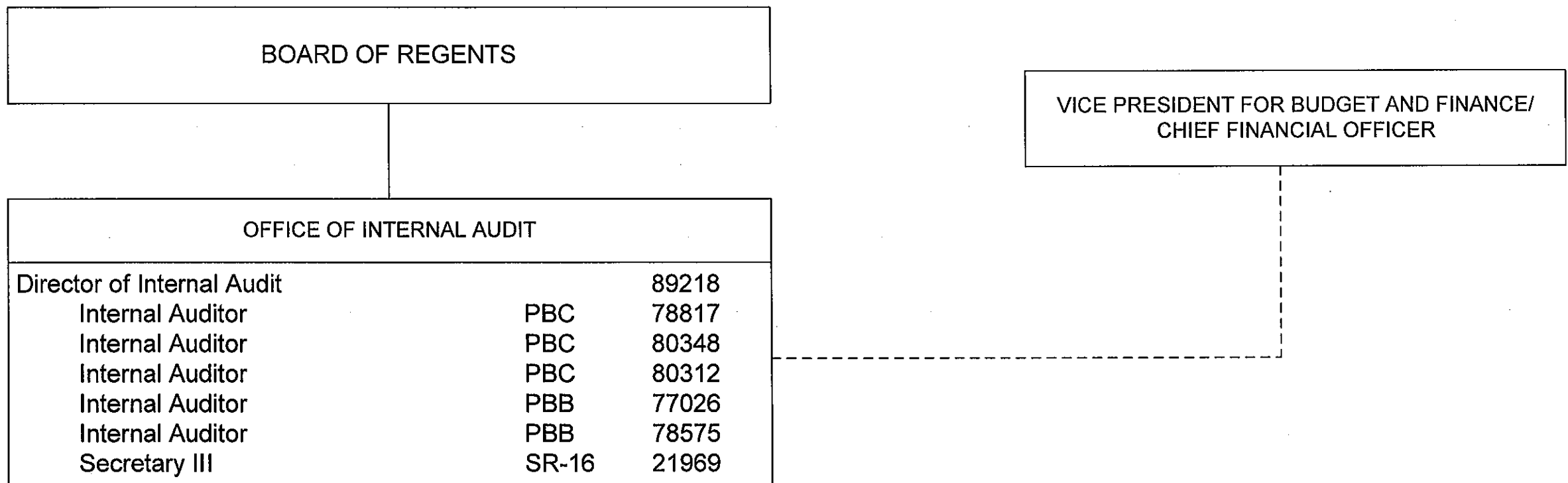
STATE OF HAWAII  
UNIVERSITY OF HAWAII  
SYSTEMWIDE ADMINISTRATION  
BOARD OF REGENTS

POSITION ORGANIZATION CHART



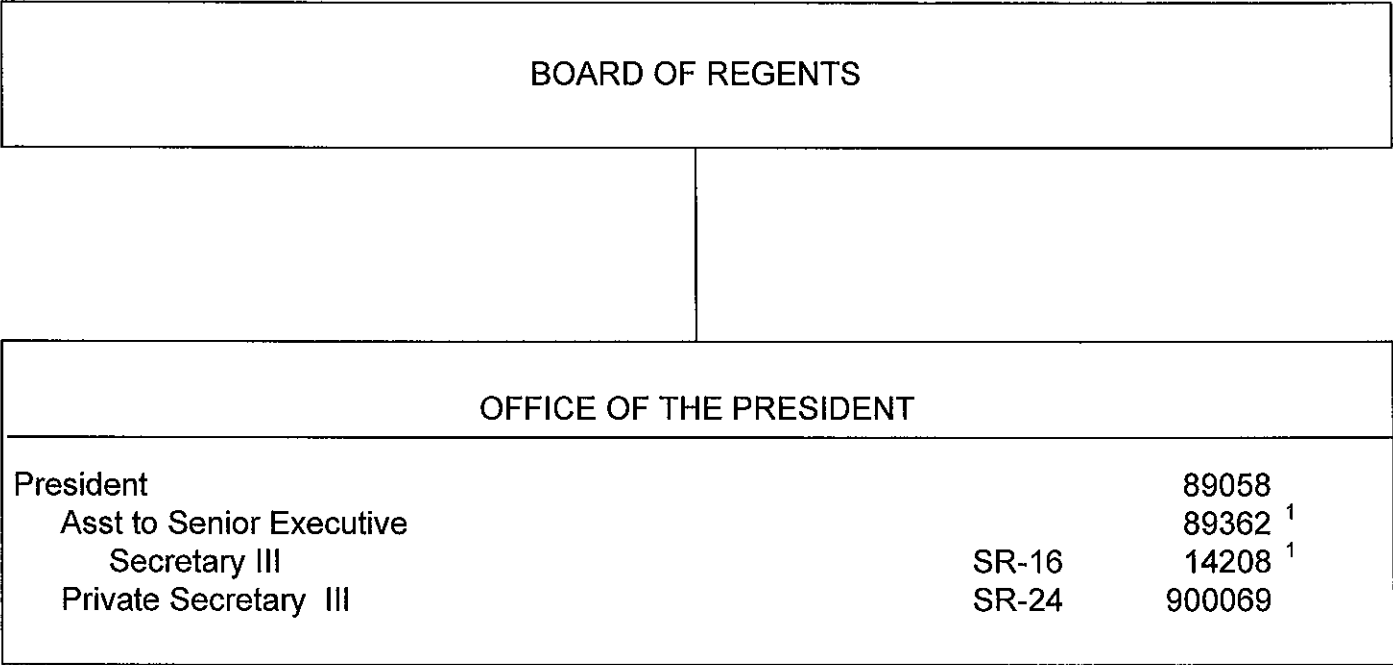
STATE OF HAWAII  
UNIVERSITY OF HAWAII  
SYSTEMWIDE ADMINISTRATION  
BOARD OF REGENTS  
OFFICE OF INTERNAL AUDIT

POSITION ORGANIZATION CHART



STATE OF HAWAII  
UNIVERSITY OF HAWAII  
SYSTEMWIDE ADMINISTRATION  
OFFICE OF THE PRESIDENT

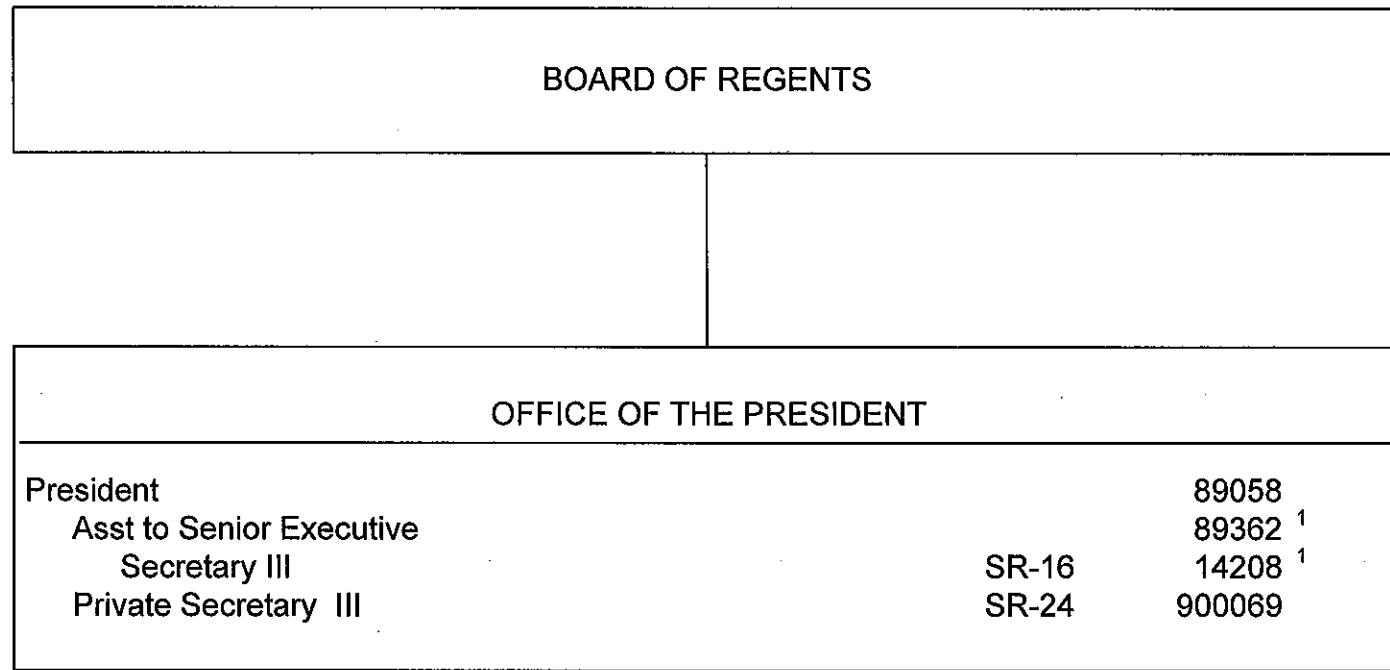
POSITION ORGANIZATION CHART



<sup>1</sup> To be redescribed  
Positions being held in reserve for future use: Position No. 89446, Vice President for Administration, and Position No. 900120, Private Secretary II, SR 22

STATE OF HAWAII  
UNIVERSITY OF HAWAII  
SYSTEMWIDE ADMINISTRATION  
OFFICE OF THE PRESIDENT

POSITION ORGANIZATION CHART

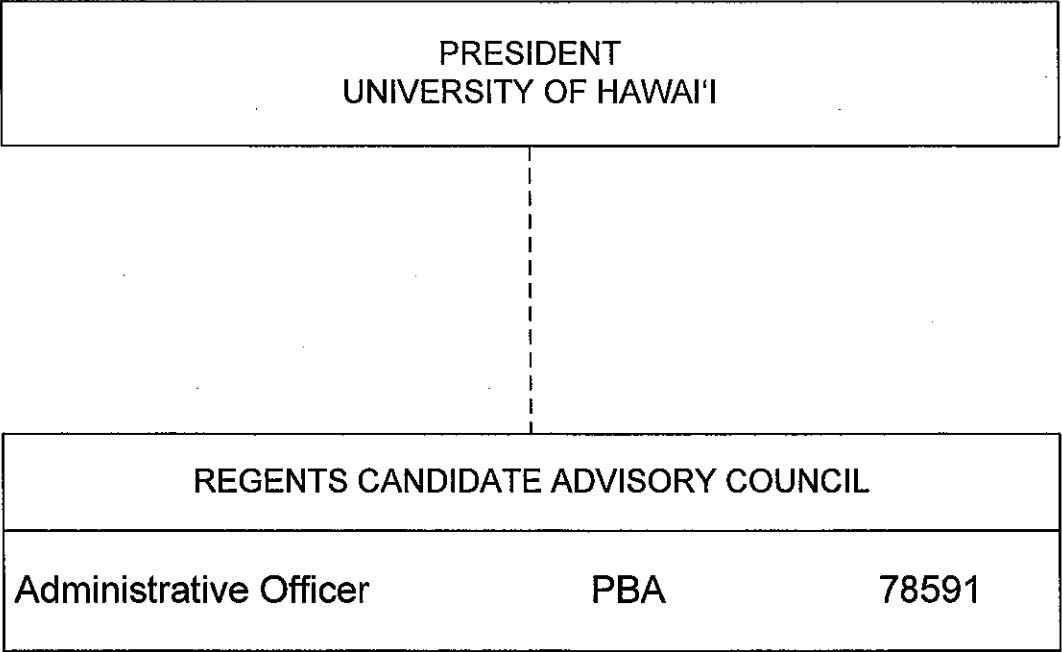


<sup>1</sup> To be redescribed  
Position appropriated but not established: 99971F  
2010update presidents office.vsd

**SUPERSEDED**  
**Date** NOV 18 2010

General Fund Perm  
5.00  
**CHART UPDATED**  
JUL 01 2010  
**DATE** \_\_\_\_\_

STATE OF HAWAII  
UNIVERSITY OF HAWAII  
SYSTEMWIDE ADMINISTRATION  
REGENTS CANDIDATE ADVISORY COUNCIL  
  
POSITION ORGANIZATION CHART



General Fund      Perm  
1.00

CHART UPDATED  
DATE JUL 01 2010

STATE OF HAWAII  
UNIVERSITY OF HAWAII  
SYSTEMWIDE ADMINISTRATION  
STATE POSTSECONDARY EDUCATION  
COMMISSION

POSITION ORGANIZATION CHART

