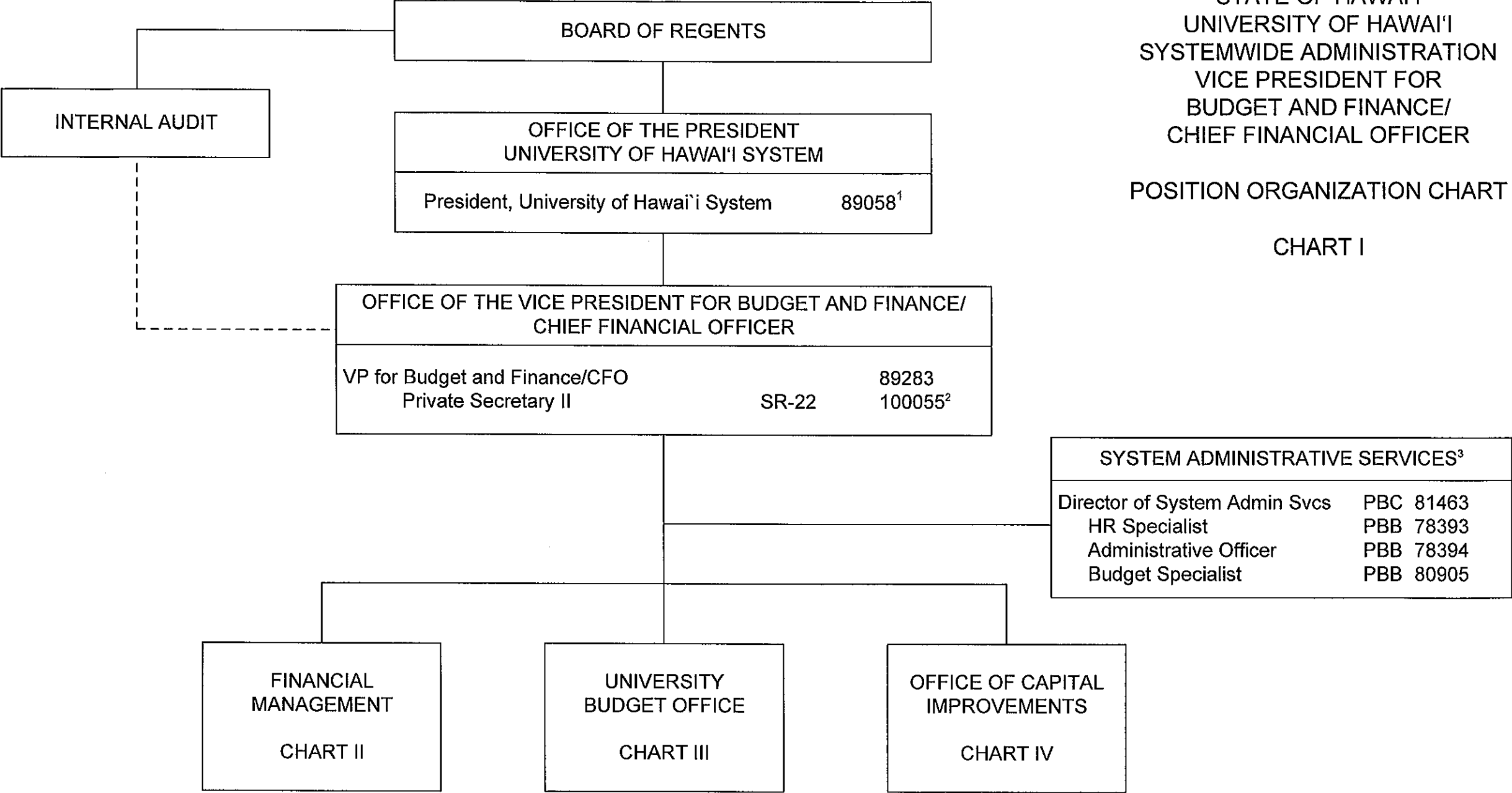


STATE OF HAWAII
UNIVERSITY OF HAWAII
SYSTEMWIDE ADMINISTRATION
VICE PRESIDENT FOR
BUDGET AND FINANCE/
CHIEF FINANCIAL OFFICER

POSITION ORGANIZATION CHART

CHART I



¹ Excluded from position count

² To be redescribed

³ Position 78673 in System Administrative Services abolished; pending reestablishment

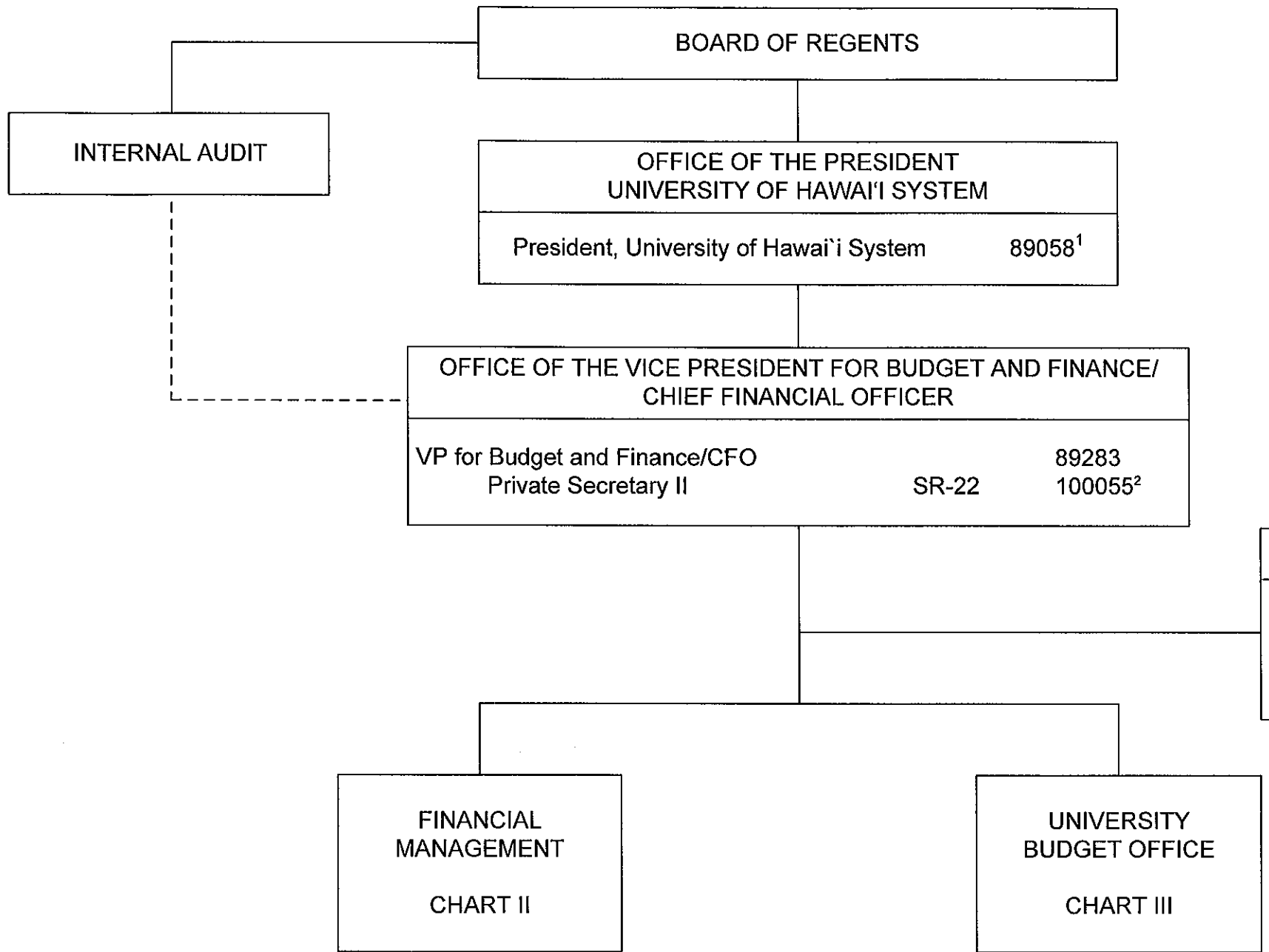
CHART UPDATED

NOV 18 2010

DATE _____

Perm

General Funds 7.00



STATE OF HAWAI'I
UNIVERSITY OF HAWAI'I
SYSTEMWIDE ADMINISTRATION
VICE PRESIDENT FOR
BUDGET AND FINANCE/
CHIEF FINANCIAL OFFICER

POSITION ORGANIZATION CHART

CHART I

¹ Excluded from position count

² To be redescribed

³ Position 78673 in System Administrative Services abolished;
pending reestablishment

SUPERSEDED

Date NOV 18 2010

CHART UPDATED

DATE JUL 01 2010

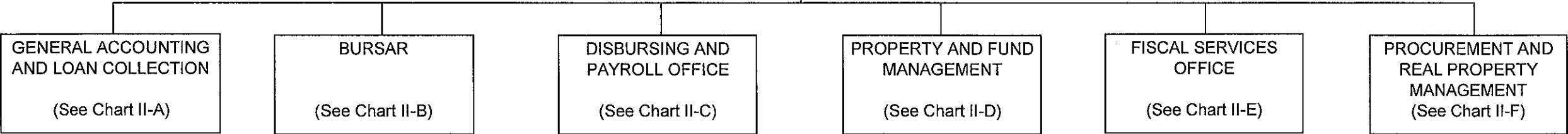
STATE OF HAWAII
UNIVERSITY OF HAWAII
SYSTEMWIDE ADMINISTRATION
VICE PRESIDENT FOR
BUDGET AND FINANCE/
CHIEF FINANCIAL OFFICER
FINANCIAL MANAGEMENT

POSITION ORGANIZATION CHART

CHART II

OFFICE OF THE VICE PRESIDENT FOR BUDGET AND FINANCE/ CHIEF FINANCIAL OFFICER	
VP for Budget and Finance and Chief Financial Officer	89283*

FINANCIAL MANAGEMENT		
Director of Financial Management and Controller		89212
Secretary	SR-16	15349
Administrative Officer	PBB	80173



* Excluded from position count, this page

Perm
General Funds 3.00

STATE OF HAWAII
UNIVERSITY OF HAWAII
SYSTEMWIDE ADMINISTRATION
VICE PRESIDENT FOR
BUDGET AND FINANCE/
CHIEF FINANCIAL OFFICER
FINANCIAL MANAGEMENT
GENERAL ACCOUNTING AND LOAN
COLLECTION

POSITION ORGANIZATION CHART

CHART II-A

FINANCIAL MANAGEMENT	
Director of Financial Management and Controller	89212*

GENERAL ACCOUNTING AND LOAN COLLECTION (GALC)		
Director of GALC	PBD	78557
Fiscal Accounting Sp	PBC	80150
Fiscal Accounting Sp	PBB	78554
Fiscal Accounting Sp	PBB	78555
Fiscal Accounting Sp	PBB	78556
Fiscal Accounting Sp	PBB	80349
Fiscal Accounting Sp	PBB	80549
Fiscal Accounting Sp	PBB	81409
Fiscal Accounting Sp	PBB	80346
Fiscal Accounting Sp	PBB	81370
Fiscal Accounting Sp	PBB	81862(N)
Administrative Officer	PBB	80205(N)
Fiscal Accounting Sp	PBB	80888
Fiscal Accounting Sp	PBB	80347
Fiscal Accounting Sp	PBB	80141
Fiscal Accounting Sp	PBB	81407
Fiscal Accounting Sp	PBB	77296
Administrative Officer	PBB	81978
Administrative Officer	PBA	81814(N)
Administrative Officer	PBA	80333(N)
Administrative Officer	PBA	80842(N)
Administrative Officer	PBA	80856(N)
Administrative Officer	PBA	81962(N)
Administrative Officer	PBA	81479(N)

* Excluded from position count, this page

** Positions appropriated to Manoa, reflected organizationally on this chart

CHART UPDATED

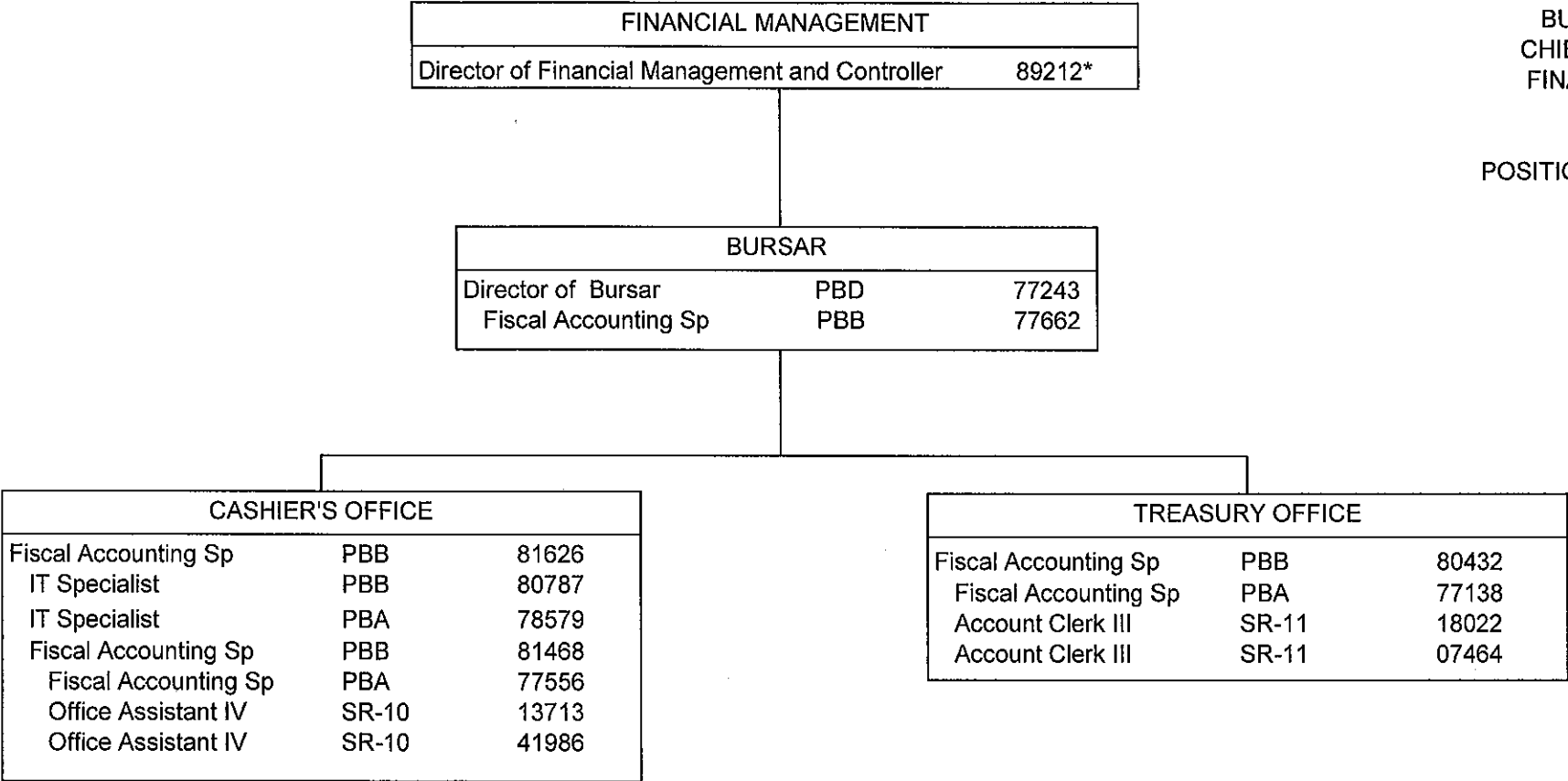
DATE JUL 01 2010

Perm
General Funds 16.00
Federal Funds (N) 8.00 **

STATE OF HAWAII
UNIVERSITY OF HAWAII
SYSTEMWIDE ADMINISTRATION
VICE PRESIDENT FOR
BUDGET AND FINANCE/
CHIEF FINANCIAL OFFICER
FINANCIAL MANAGEMENT
BURSAR

POSITION ORGANIZATION CHART

CHART II-B



* Excluded from position count, this page

FINANCIAL MANAGEMENT		
Director of Financial Management and Controller		89212*

DISBURSING AND PAYROLL			
Director of Disbursing & Payroll	PBC		80158
Fiscal Accounting Sp	PBB		80931
Secretary	SR-14		22263

STATE OF HAWAI'I
UNIVERSITY OF HAWAI'I
SYSTEMWIDE ADMINISTRATION
VICE PRESIDENT FOR
BUDGET AND FINANCE/
CHIEF FINANCIAL OFFICER
FINANCIAL MANAGEMENT
DISBURSING AND PAYROLL

POSITION ORGANIZATION CHART

CHART II-C

PAYROLL			
Payroll Officer	PBB		80303
Pre-Audit Clk III	SR-15		13907
Pre-Audit Clk II	SR-13		18084
Pre-Audit Clk II	SR-13		21571
Pre-Audit Clk II	SR-13		27017
Pre-Audit Clk II	SR-13		26648
Pre-Audit Clk II	SR-13		41884

ACCOUNTS PAYABLE			
Fiscal Accounting Sp	PBB		81613

CHECK DISTRIBUTION			
Office Assistant IV	SR-10		22262
Office Assistant IV	SR-10		13895

ENCUMBRANCE AND PAYMENT PRE-AUDIT			
Pre-Audit Clk IV	SR-17		19370

Pre-Audit Clk III	SR-15		09079
Pre-Audit Clk II	SR-13		48223

Pre-Audit Clk III	SR-15		21443
Pre-Audit Clk II	SR-13		19368
Pre-Audit Clk II	SR-13		19367

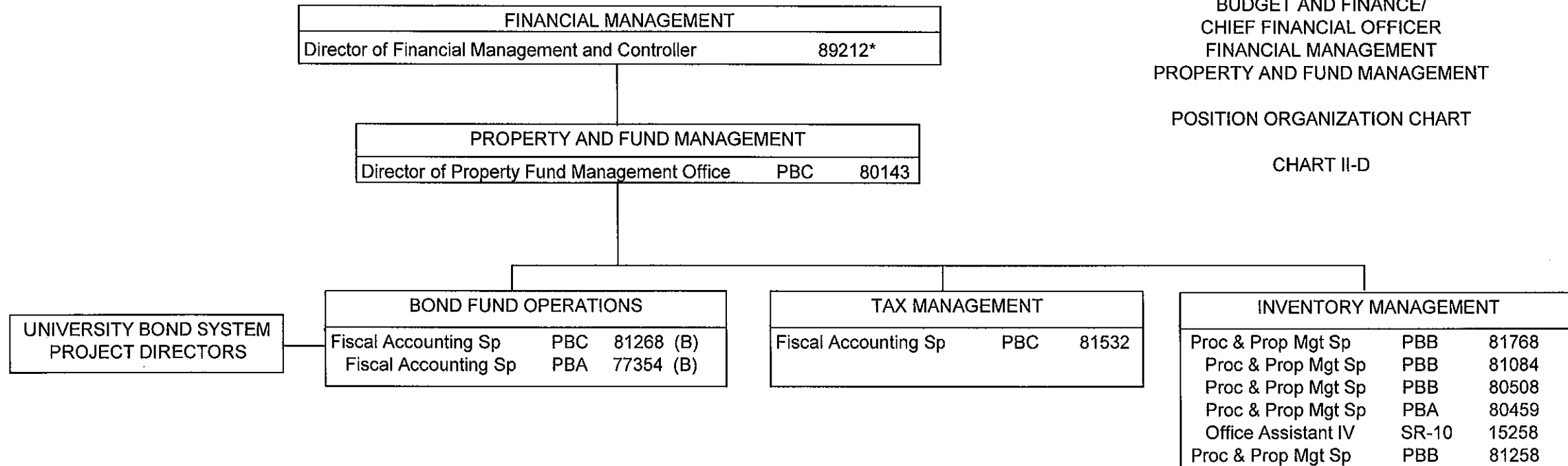
Pre-Audit Clk II	SR-13		16964
Pre-Audit Clk II	SR-13		21444
Pre-Audit Clk II	SR-13		19366

* Excluded from position count, this page

STATE OF HAWAII
 UNIVERSITY OF HAWAII
 SYSTEMWIDE ADMINISTRATION
 VICE PRESIDENT FOR
 BUDGET AND FINANCE/
 CHIEF FINANCIAL OFFICER
 FINANCIAL MANAGEMENT
 PROPERTY AND FUND MANAGEMENT

POSITION ORGANIZATION CHART

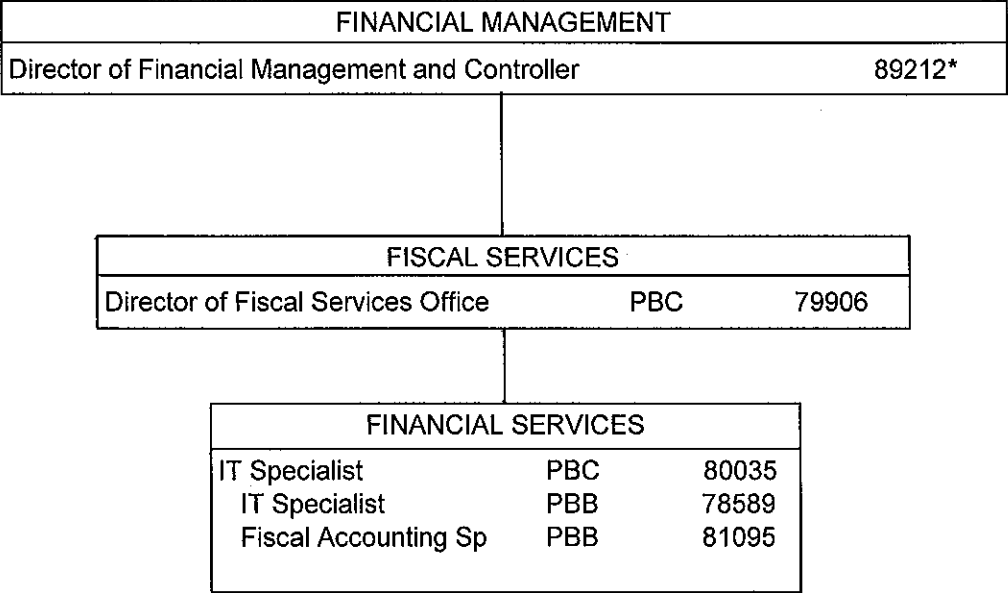
CHART II-D



* Excluded from position count, this page
 Position appropriated but not established: 98963F (0.50)

Perm
 General Funds 8.50
 (B) Special Funds 2.00

CHART UPDATED
 DATE JUL 01 2010

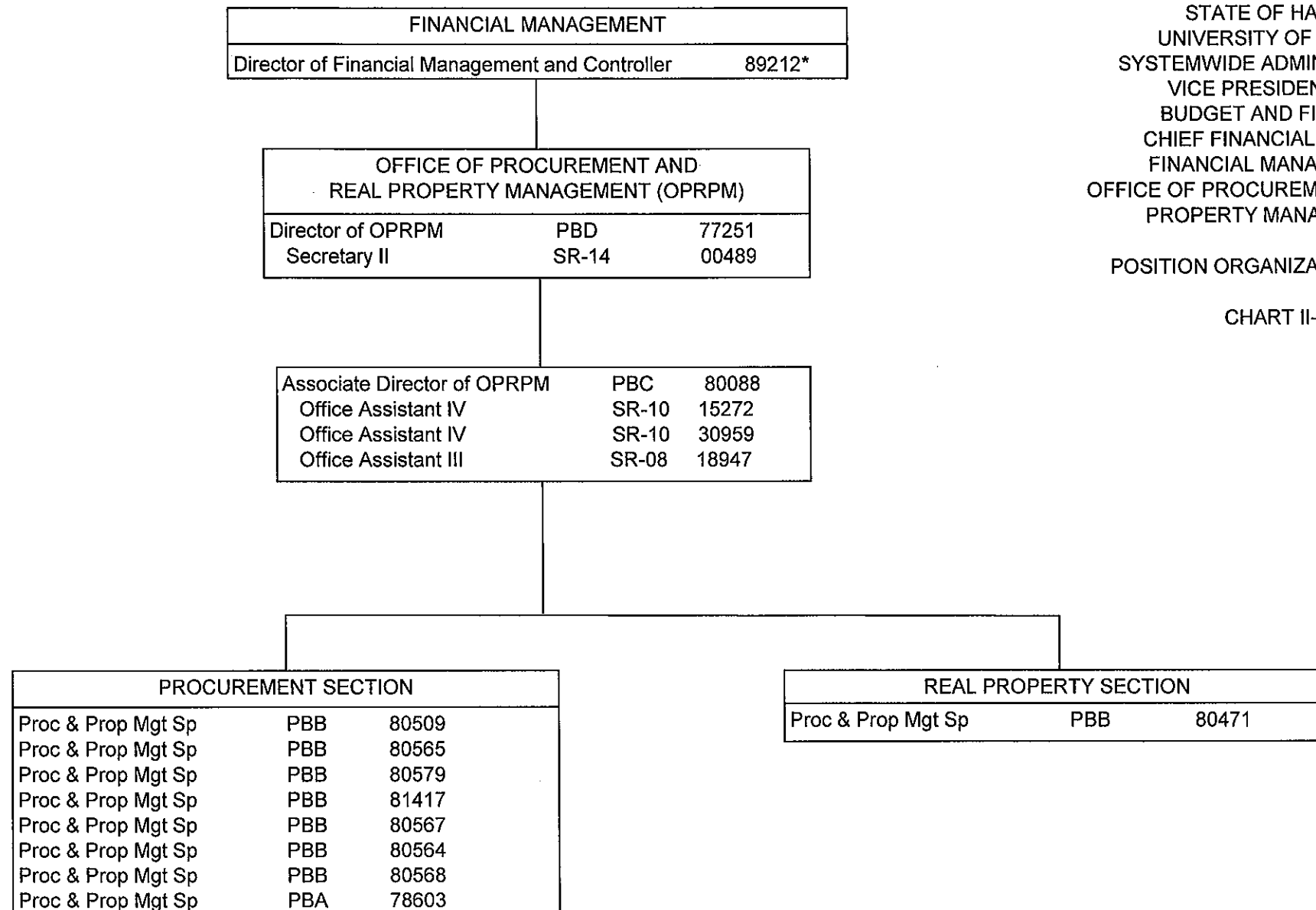


STATE OF HAWAII
UNIVERSITY OF HAWAII
SYSTEMWIDE ADMINISTRATION
VICE PRESIDENT FOR
BUDGET AND FINANCE/
CHIEF FINANCIAL OFFICER
FINANCIAL MANAGEMENT
FISCAL SERVICES

POSITION ORGANIZATION CHART

CHART II-E

* Excluded from position count, this page



STATE OF HAWAII
UNIVERSITY OF HAWAII
SYSTEMWIDE ADMINISTRATION
VICE PRESIDENT FOR
BUDGET AND FINANCE/
CHIEF FINANCIAL OFFICER
FINANCIAL MANAGEMENT
OFFICE OF PROCUREMENT AND REAL
PROPERTY MANAGEMENT

POSITION ORGANIZATION CHART

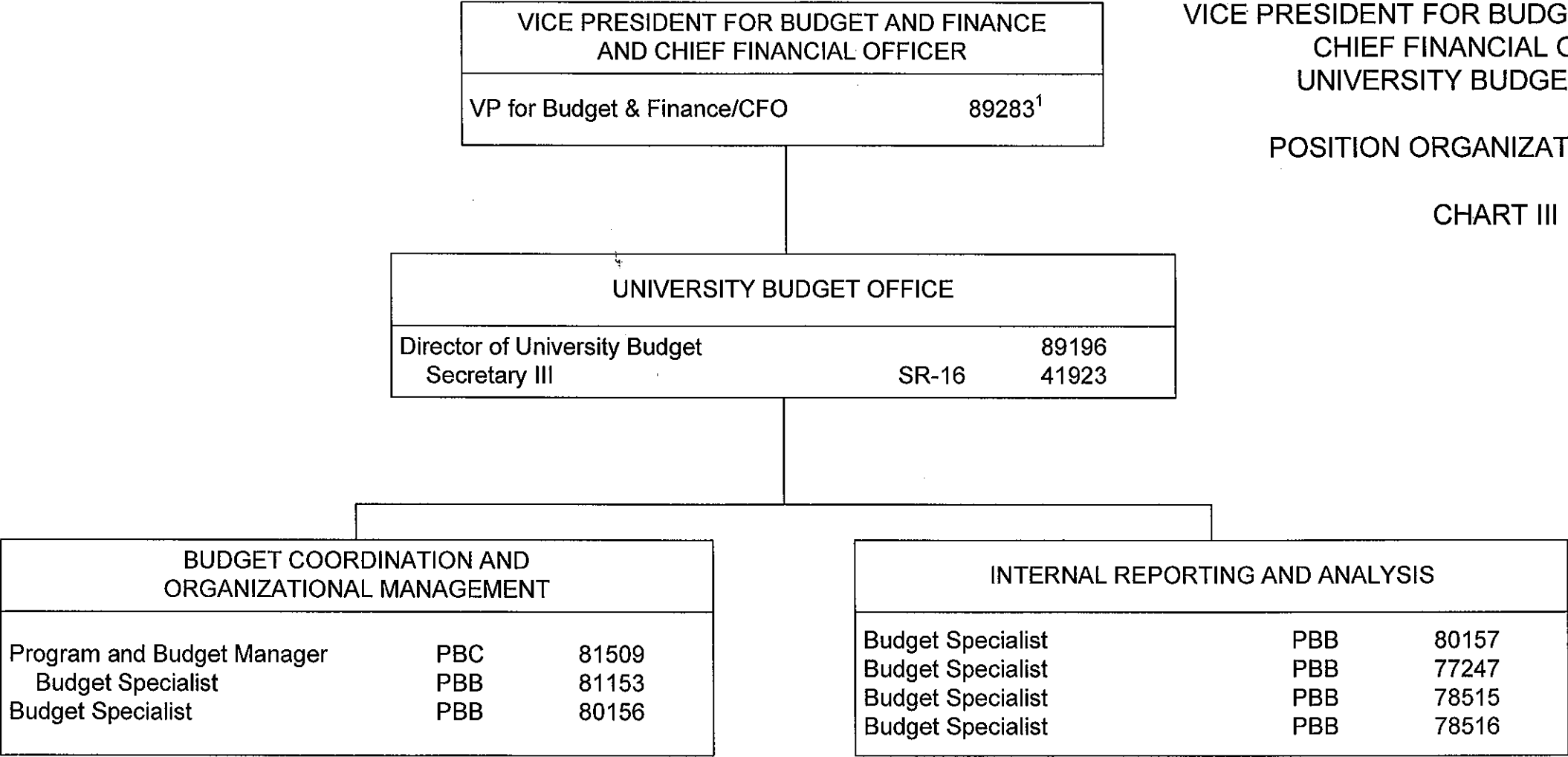
CHART II-F

* Excluded from position count, this page
Position appropriated but not established: 99953F

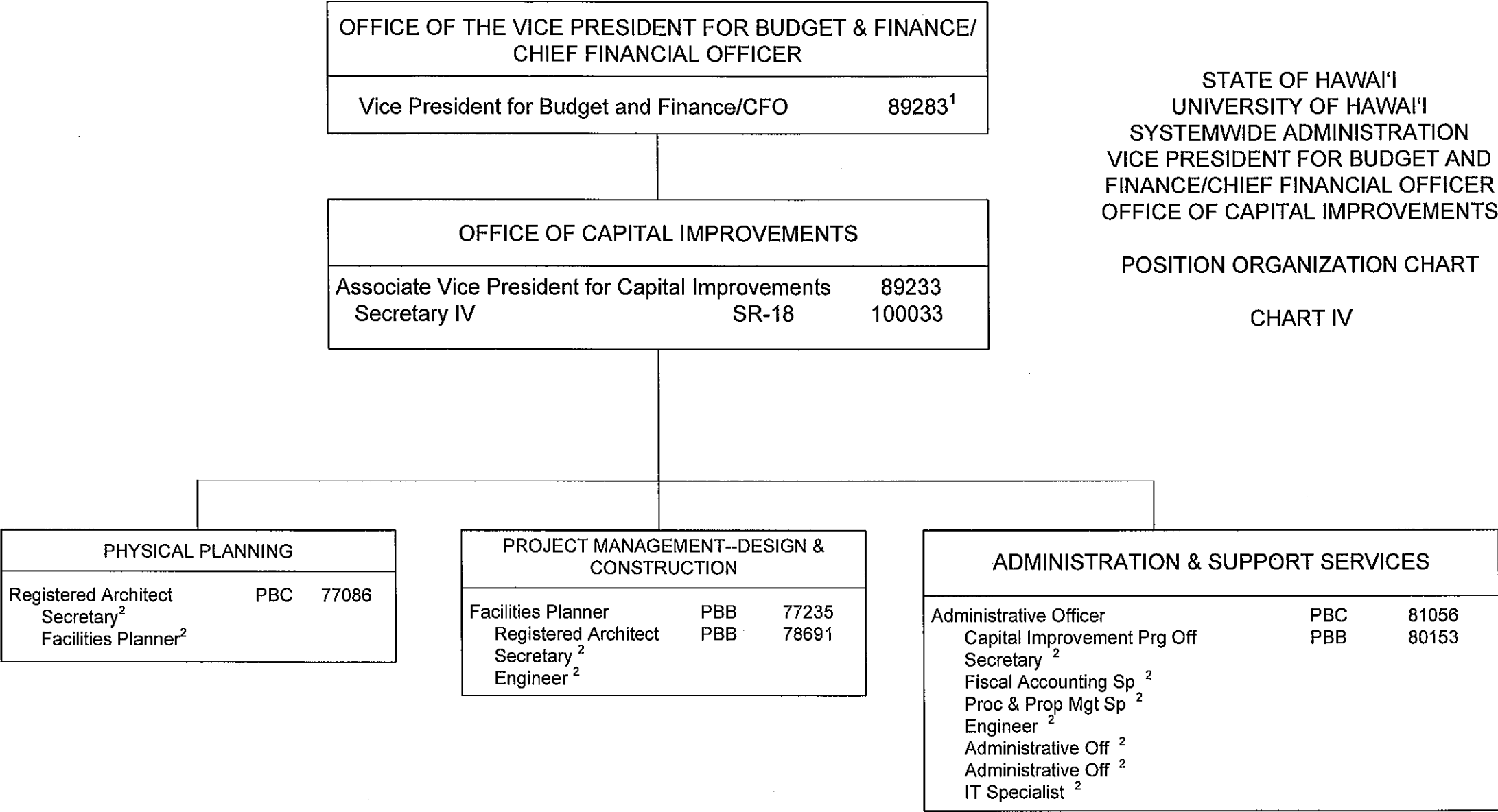
STATE OF HAWAII
UNIVERSITY OF HAWAII
SYSTEMWIDE ADMINISTRATION
VICE PRESIDENT FOR BUDGET AND FINANCE/
CHIEF FINANCIAL OFFICER
UNIVERSITY BUDGET OFFICE

POSITION ORGANIZATION CHART

CHART III



¹ Excluded from position count



STATE OF HAWAI'I
UNIVERSITY OF HAWAI'I
SYSTEMWIDE ADMINISTRATION
VICE PRESIDENT FOR BUDGET AND
FINANCE/CHIEF FINANCIAL OFFICER
OFFICE OF CAPITAL IMPROVEMENTS

POSITION ORGANIZATION CHART

CHART IV

¹ Excluded from position count
² To be created via reassigned position within the University and/or to be requested

	<u>Perm</u>
General Fund	7.00
General Fund	11.00 (to be reassigned/requested)

CHART UPDATED
DATE NOV 18 2010