

CHART I

General Fund FTE: 30.00

Grand Total General Fund FTE: 82.50

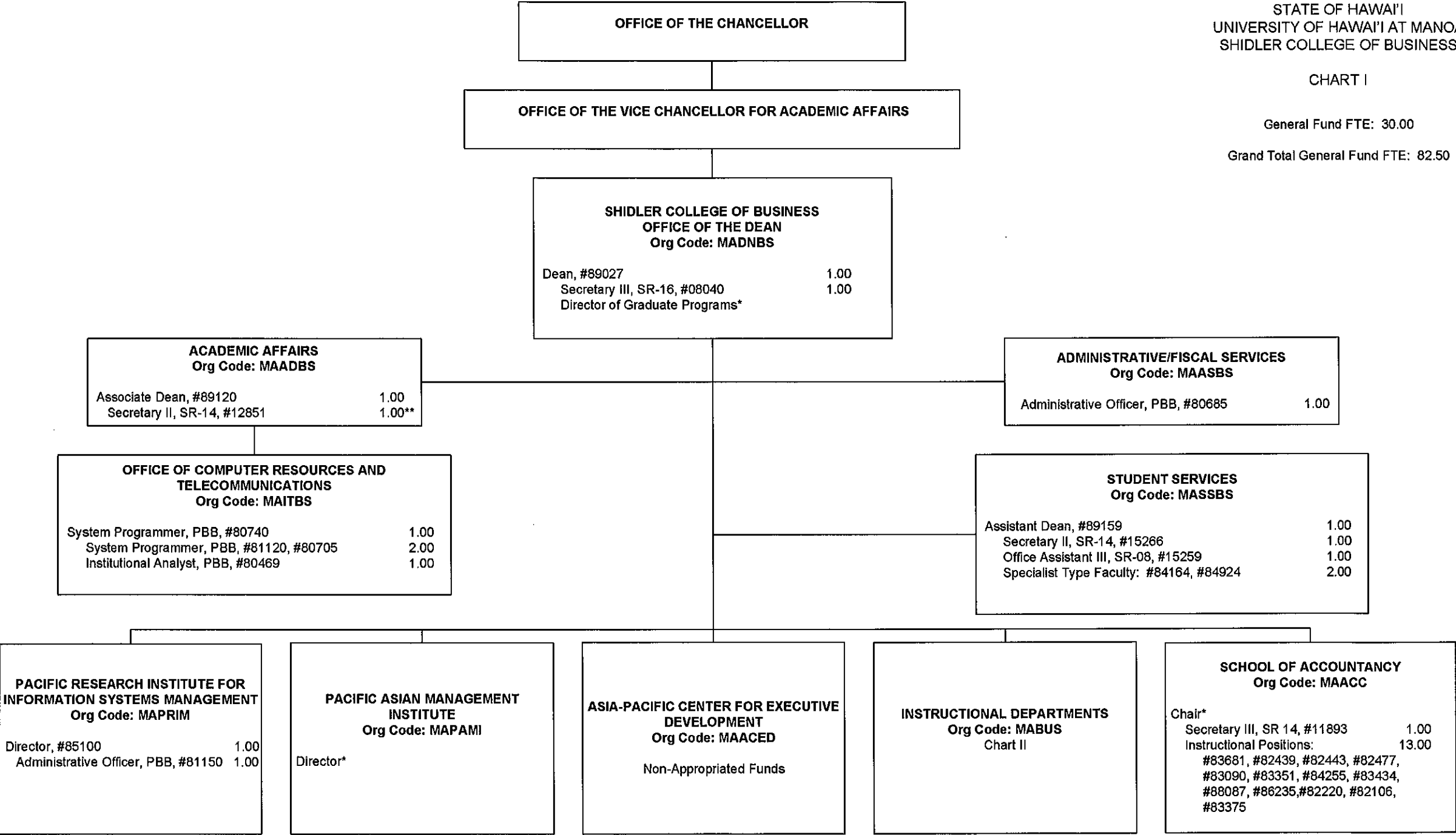


CHART UPDATED
JUL 01 2010

DATE: _____

* Appointed from Instructional Position.
** Abolished

CHART II

General Fund FTE: 52.50

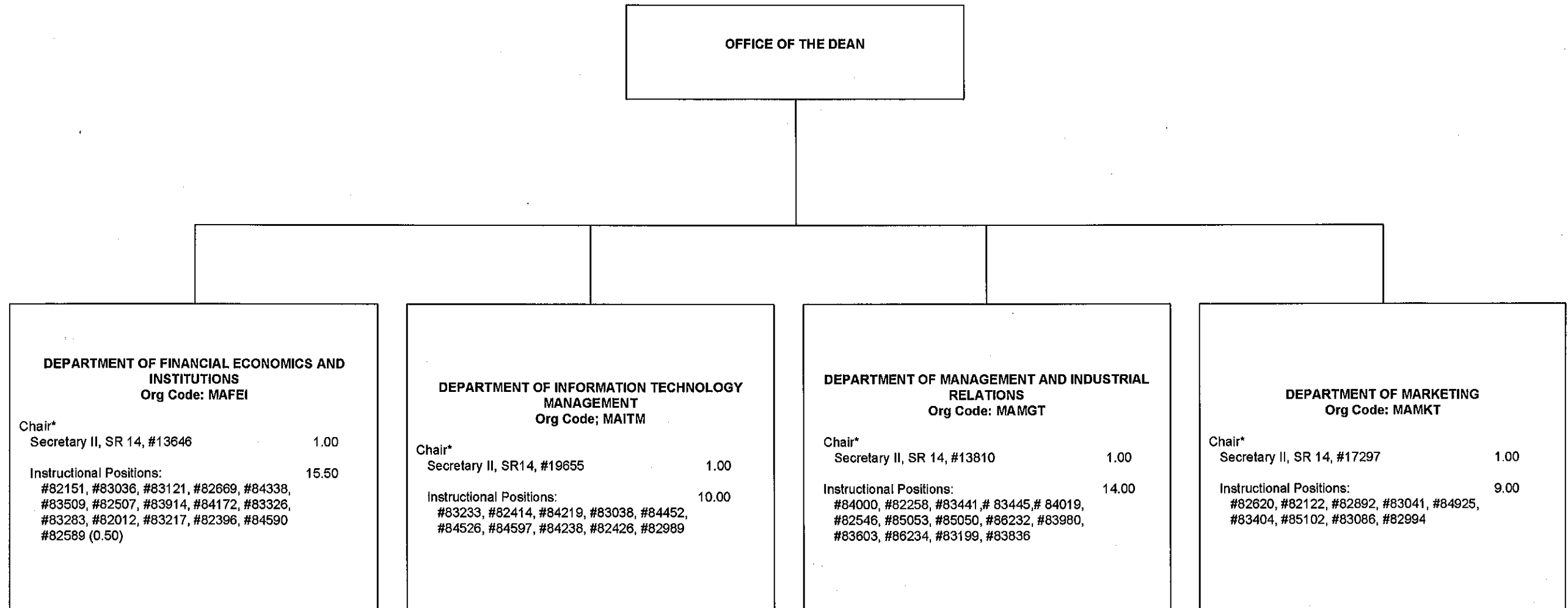


CHART UPDATED

DATE JUL 01 2010

*Appointed from Instructional Position.