

Grand Total General Funds 197.50

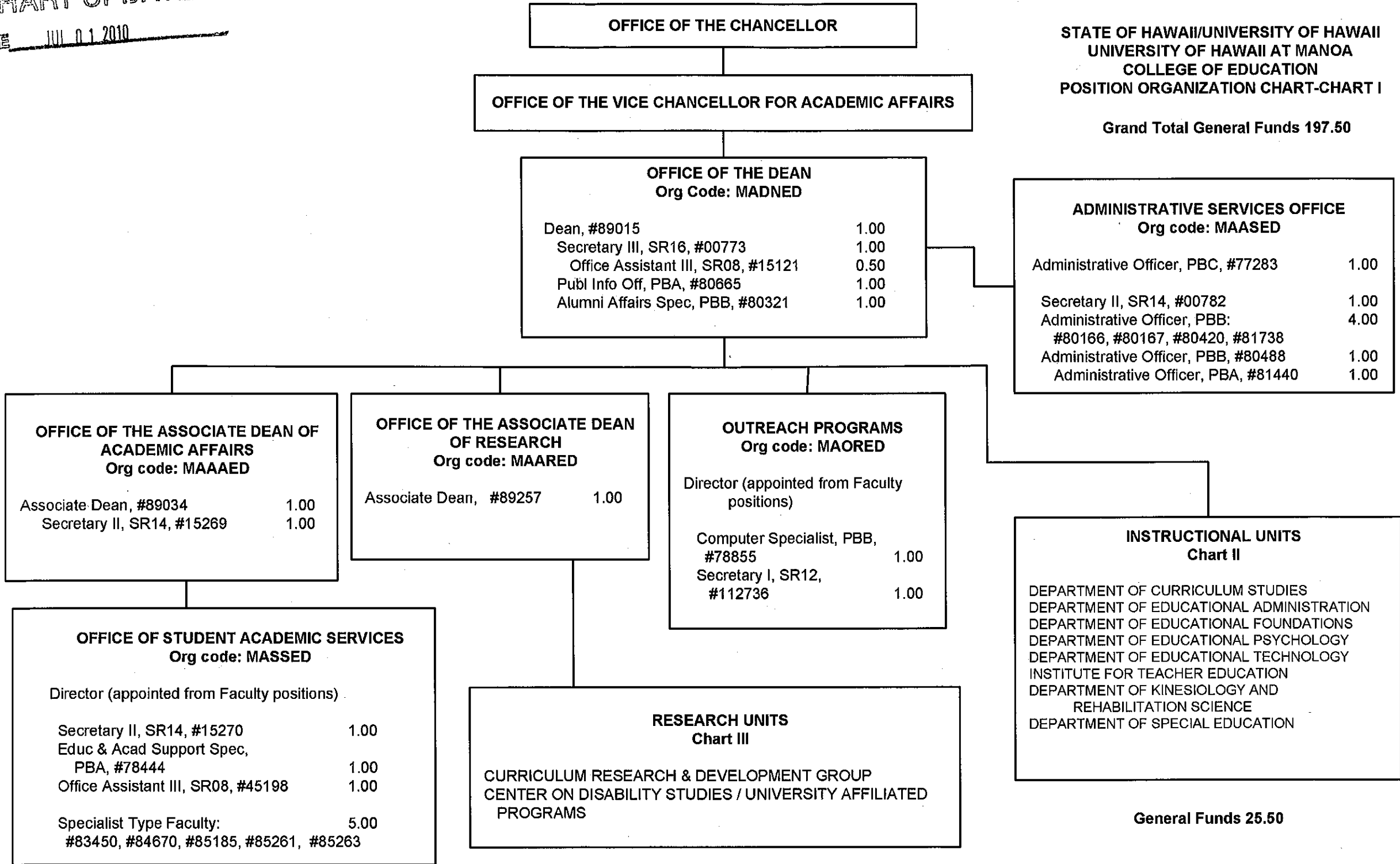


CHART UPDATED  
JUL 01 2010  
DATE \_\_\_\_\_

OFFICE OF THE DEAN

INSTRUCTIONAL UNITS  
Org Code: MAIUED

STATE OF HAWAII/UNIVERSITY OF HAWAII  
UNIVERSITY OF HAWAII AT MANOA  
COLLEGE OF EDUCATION  
POSITION ORGANIZATION CHART – CHART II

General Funds 132.00

INSTITUTE FOR TEACHER EDUCATION  
Org code: MAITE

Chair (appointed from Faculty positions)  
Secretary II, SR 14, #12977 1.00  
Office Assistant III, SR08, #12844 1.00

Instructional Faculty: 28.00  
#82229, #82235, #82250, #82288, #82360,  
#82373, #82484, #82710, #83204, #83672,  
#83923, #83954, #84090, #84117, #84141,  
#84353, #85191, #85192, #85194, #85196,  
#85197, #85200, #85206, #85236, #85254,  
#85290, #97512F, #97513F

Specialist Type Faculty: 5.00  
#85189, #85294, #83084, #84065, #84529

Graduate Assistant: #85646 0.50

DEPARTMENT OF EDUCATIONAL  
ADMINISTRATION  
Org code: MAEDEA

Chair (appointed from Faculty positions)  
Secretary II, SR 14, #17304 1.00  
Instructional Faculty: 7.00  
#82006, #82075, #82678, #84437,  
#85054, #85193, #85195

Grad Assistant: #85198 0.50

DEPARTMENT OF EDUCATIONAL  
FOUNDATIONS  
Org code: MAEDEF

Chair (appointed from Faculty positions)  
Secretary II, SR 14, #13672 1.00  
Instructional Faculty: 9.00  
#82093, #83196, #83952, #83922,  
#84261, #84659, #84835, #85184, #85301

DEPARTMENT OF CURRICULUM STUDIES  
Org code: MAEDCS

Chair (appointed from Faculty positions)  
Secretary II, SR 14, #45864 1.00  
Educational Specialist, PBB, #78031 1.00  
Administrative Officer, PBB, #78958 1.00

Instructional Faculty: 18.00  
#82043, #82144, #82632, #82711, #83335, #83473, #83995,  
#84048, #84527, #84544, #84680, #85187, #85203, #85204,  
#85205, #85225, #85255, #85284

Specialist Type Faculty: 5.00  
#82616, #82755, #84191, #85303, #82897

Grad Assistant, GA09, #82255 0.50

DEPARTMENT OF KINESIOLOGY AND  
REHABILITATION SCIENCE  
Org code: MAKRS

Chair (appointed from Faculty positions)  
Secretary II, SR 14, #7470 1.00

Instructional Faculty: 12.00  
#82083, #82333, #82528, #82578, #82820,  
#82861, #83131, #83425, #84352, #84381,  
#85199, #85256

Specialist Type Faculty: #85249 1.00

DEPARTMENT OF SPECIAL EDUCATION  
Org code: MASPED

Chair (appointed from Faculty positions)  
Secretary II, SR 14, #15141 1.00  
Instructional Faculty: 14.00  
#82069, #82088, #82095, #82319,  
#82479, #82575, #82664, #82894,  
#83987, #84307, #84625, #85220,  
#85292, #85293

Specialist Type Faculty: 2.00  
#85221, #85222

DEPARTMENT OF EDUCATIONAL  
PSYCHOLOGY  
Org code: MAEDEP

Chair (appointed from Faculty positions)  
Secretary II, SR 14, #11895 1.00

Instructional Faculty: 8.00  
#82105, #82193, #82276, #82617,  
#84004, #84129, #84407, #85286

Grad Assistant: #88588 0.50

DEPARTMENT OF EDUCATIONAL  
TECHNOLOGY  
Org code: MAETEC

Chair (appointed from Faculty positions)  
Secretary II, SR14, #15747 1.00  
Instructional Faculty: 8.00  
#82571, #82963, #83299, #83872,  
#84789, #85201, #85224, #85288

Specialist Type Faculty: 2.00  
#85296, #85299

OFFICE OF THE DEAN

RESEARCH UNITS  
Org Code: MARSED

STATE OF HAWAII/UNIVERSITY OF HAWAII  
UNIVERSITY OF HAWAII AT MANOA  
COLLEGE OF EDUCATION  
POSITION ORGANIZATION CHART – CHART III

CURRICULUM RESEARCH & DEVELOPMENT GROUP  
Org code: MACRDG

Director, #82950	1.00
Secretary II, SR 14, #21475	1.00
Sch Food Svc Mgr III, F206, #04945	1.00
School Cook II, BC06, #05092	1.00
Café Helper, BC02, #08095	1.00
Instructional Faculty: #82154, #82160, #82174, #82387, #82793, #83951, #84077, #84377, #84514, #84608, #85302	11.00
Specialist Type Faculty: #84771, #82272, #86644, #84517	4.00
Administrative, Professional, Technical Positions Educational Associate, PBD, #80486, Educational Associate, PBC, #80495 Educational Associate, PBB: #77012, #80228, #80433, #80440, #80465, #80468, #80472, #80474, #80476, #80480, #80481, #80491, #80849, #81170 Educational Associate, PBA, #80993	17.00
Office Assistant IV, SR10, #35206	1.00

UNIVERSITY LABORATORY SCHOOL  
Org Code: MAULAB  
Partnership

CENTER ON DISABILITY STUDIES/  
UNIVERSITY AFFILIATED PROGRAMS  
Org code: MACDS

Director, #85207*	1.00
Instructional Faculty: #85208	1.00

CENTER ON DISABILITY STUDIES  
Org code: MAXCDS

Non-Appropriated Funds

CURRICULUM RESEARCH &  
DEVELOPMENT GROUP  
Org code: MAXCRD

Non-Appropriated Funds

General Funds: 40.00 FTE

\*85207 tenured professor in  
Special Education, Chart VIII

CHART UPDATED

DATE JUL 01 2010