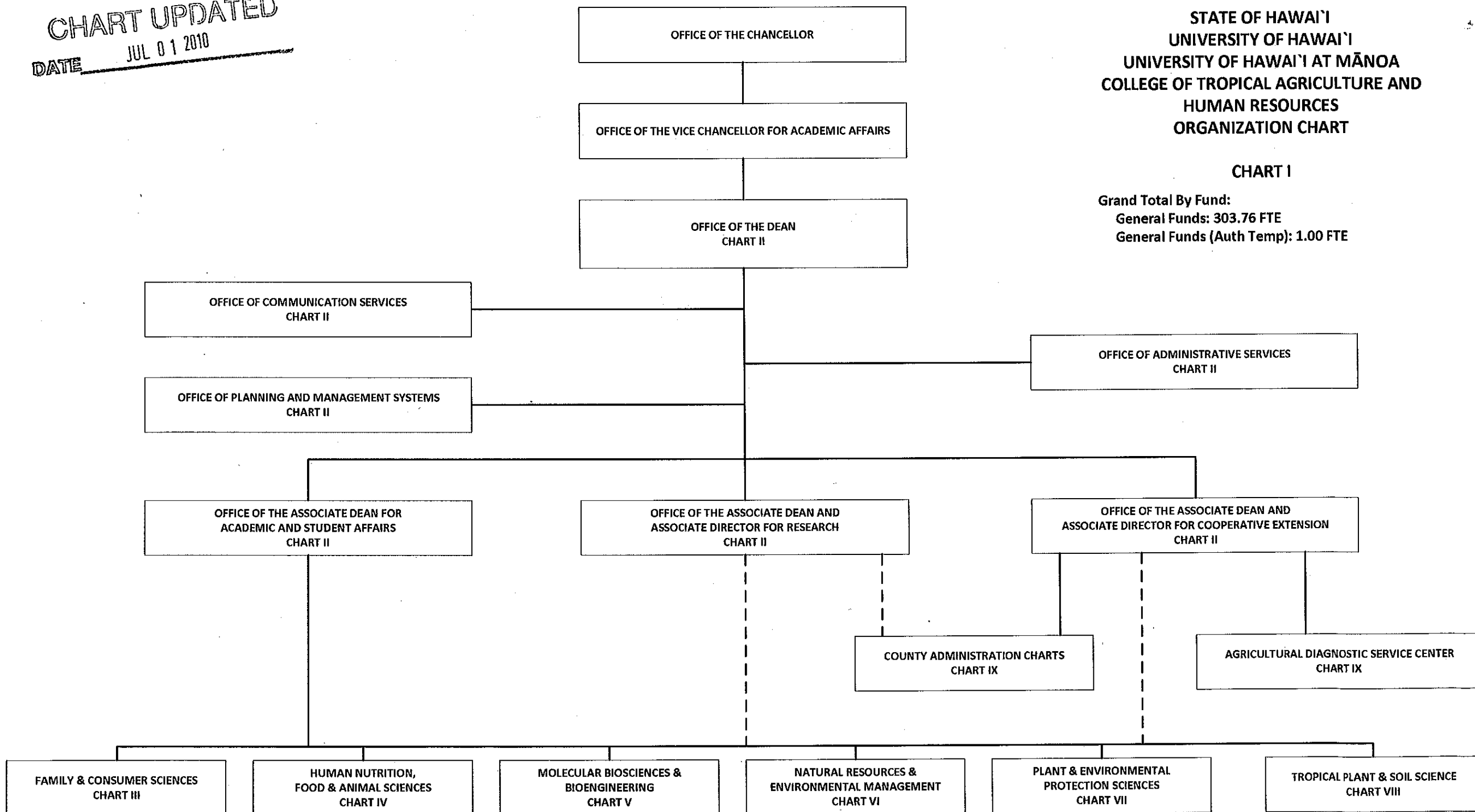


CHART UPDATED  
DATE JUL 01 2010

STATE OF HAWAI'I  
UNIVERSITY OF HAWAI'I  
UNIVERSITY OF HAWAI'I AT MĀNOA  
COLLEGE OF TROPICAL AGRICULTURE AND  
HUMAN RESOURCES  
ORGANIZATION CHART

CHART I

Grand Total By Fund:  
General Funds: 303.76 FTE  
General Funds (Auth Temp): 1.00 FTE



STATE OF HAWAII  
UNIVERSITY OF HAWAII  
UNIVERSITY OF HAWAII AT MĀNOA  
COLLEGE OF TROPICAL AGRICULTURE AND  
HUMAN RESOURCES  
ORGANIZATION CHART

OFFICE OF THE DEAN  
CHART II

Chart Total:  
General Funds: 40.00 FTE

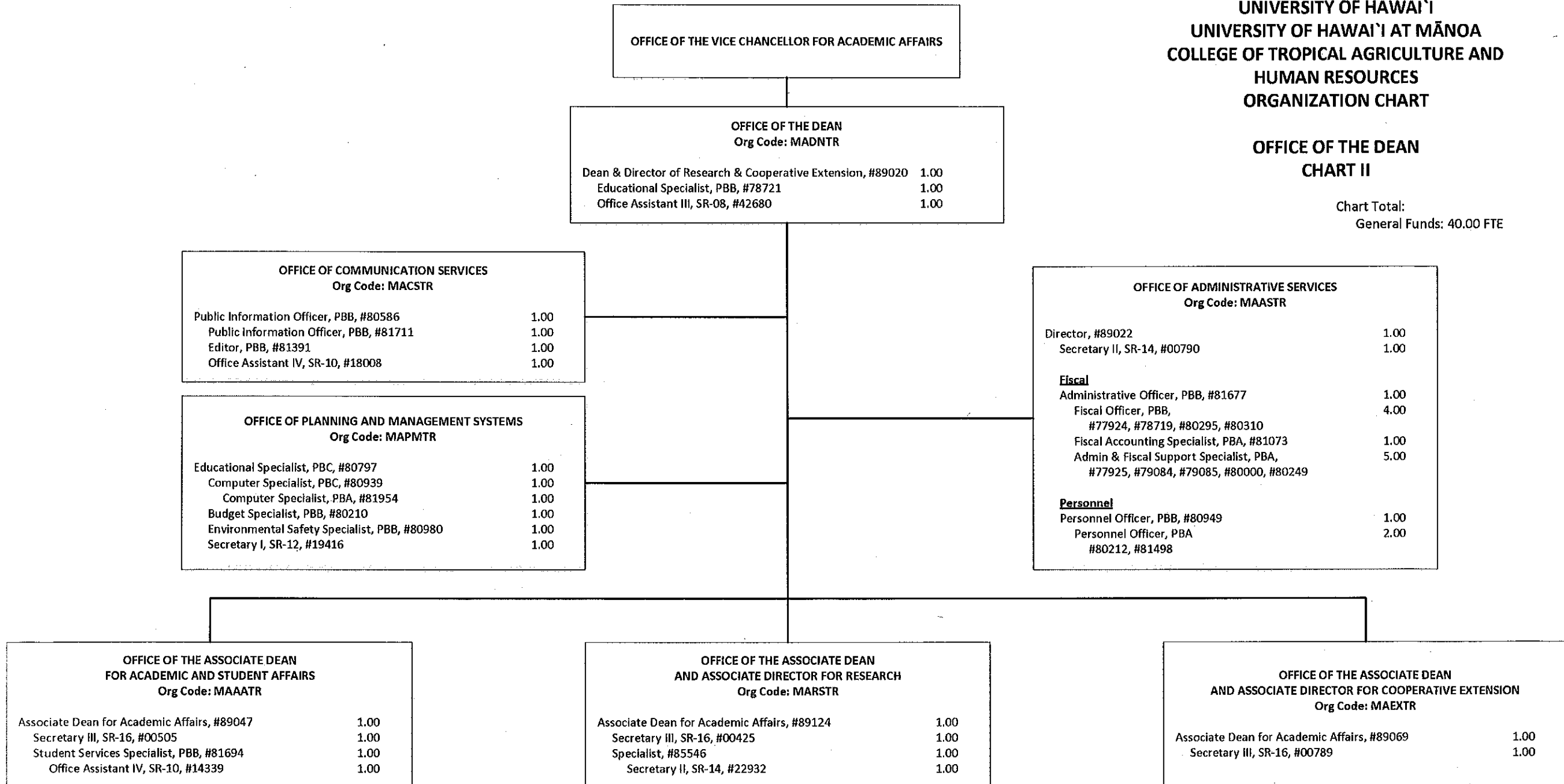


CHART UPDATED

DATE JUL 01 2010

Civil Service position deleted #05873 (1.00)

STATE OF HAWAII  
UNIVERSITY OF HAWAII  
UNIVERSITY OF HAWAII AT MĀNOA  
COLLEGE OF TROPICAL AGRICULTURE AND  
HUMAN RESOURCES  
ORGANIZATION CHART

DEPARTMENT OF FAMILY AND CONSUMER SCIENCES  
CHART III

Chart Total:  
General Funds: 38.85 FTE  
General Funds (Auth Temp): 0.50 FTE

OFFICE OF THE ASSOCIATE DEAN FOR  
ACADEMIC AND STUDENT AFFAIRS

DEPARTMENT OF FAMILY AND CONSUMER SCIENCES	
Org Code: MAFCS	
Chairperson (Appointment form among faculty positions)	
Secretary II, SR-14, #22849	1.00
Clerk-Steno II, SR-09, #21208	1.00
Educational & Academic Support Specialist, PBA, #80784	1.00
Administrative & Fiscal Support Specialist, PBA, #78061	1.00
Graduate Assistants	2.00
#88134, #88410, #88576, #85545T	
<u>Faculty Positions</u>	21.25
<u>Oahu</u>	
Instructional Faculty:	
#82094, #82336, #82392, #82699, #82866, #82869, #83220, #83242,	
#83267, #83525, #83553, #83666, #83765, #83843, #84082, #84388,	
#84914, #85151, #86066, #86274	
Specialist Type Faculty:	
#85421	
Agent Type Faculty:	
#82074, #84070, #84648, #84662, #84685, #85476	
<u>Maui</u>	
Agent Type Faculty:	
#84147, #84913	
<u>Hawaii</u>	
Agent Type Faculty:	
#82313, #82505, #84610	
<u>Kauai</u>	
Agent Type Faculty:	
#82175	

4-H OFFICE	
Org Code: MA4H	
Specialist Type Faculty:	1.00
#83968	

CENTER ON THE FAMILY	
Org Code: MACOF	
Specialist, #82639	1.00
Specialist Type Faculty:	7.10
#82238, #82485, #83399, #84145, #84325,	
#84477, #84585, #85550, #85556	
Secretary II, SR-14, #46186	1.00

CHART UPDATED  
DATE JUL 01 2010

Civil Service position deleted #04108, #4115  
(2.00)

STATE OF HAWAII  
UNIVERSITY OF HAWAII  
UNIVERSITY OF HAWAII AT MĀNOA  
COLLEGE OF TROPICAL AGRICULTURE AND  
HUMAN RESOURCES  
ORGANIZATION CHART

DEPARTMENT OF HUMAN NUTRITION, FOOD AND  
ANIMAL SCIENCES  
CHART IV

Chart Total:  
General Funds: 27.55 FTE

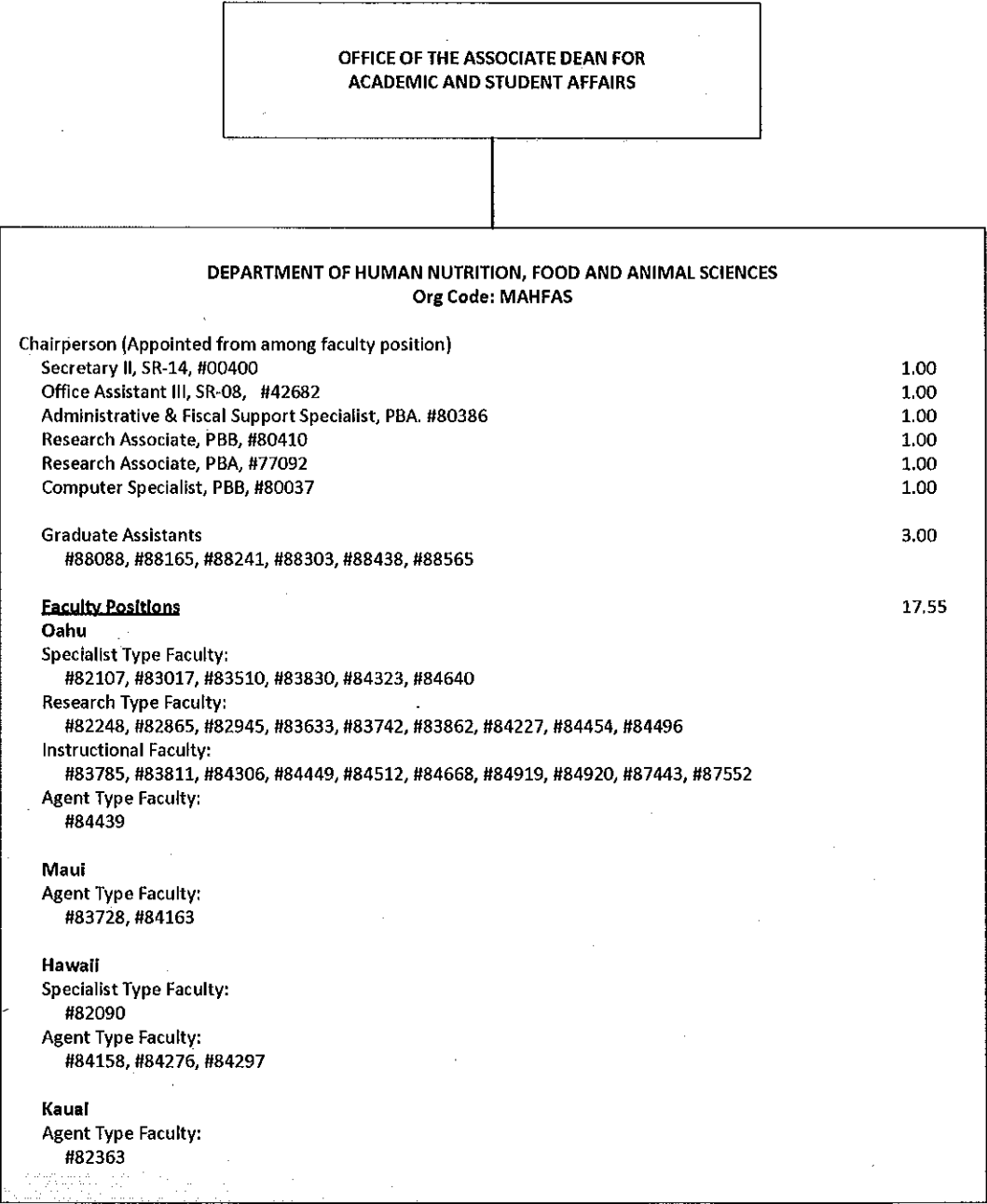


CHART UPDATED  
DATE JUL 01 2010

Civil Service position deleted #15513 (1.00)

STATE OF HAWAII  
UNIVERSITY OF HAWAII  
UNIVERSITY OF HAWAII AT MANOA  
COLLEGE OF TROPICAL AGRICULTURE AND  
HUMAN RESOURCES  
ORGANIZATION CHART

DEPARTMENT OF MOLECULAR BIOSCIENCES AND  
BIOENGINEERING  
CHART V

Chart Total:  
General Funds: 23.92 FTE

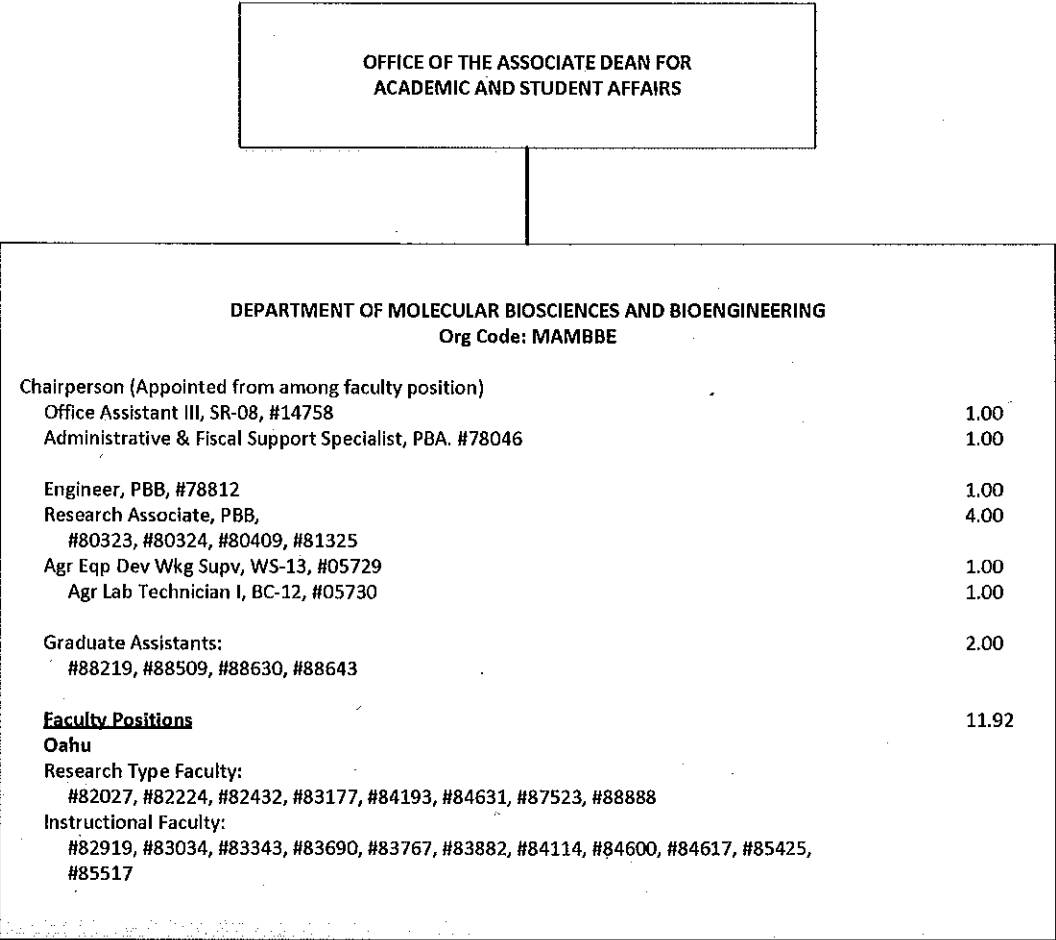


CHART UPDATED  
JUL 01 2010  
DATE \_\_\_\_\_

Civil Service position deleted #12960 (1.00)

STATE OF HAWAII  
 UNIVERSITY OF HAWAII  
 UNIVERSITY OF HAWAII AT MĀNOA  
 COLLEGE OF TROPICAL AGRICULTURE AND  
 HUMAN RESOURCES  
 ORGANIZATION CHART

DEPARTMENT OF NATURAL RESOURCES AND  
 ENVIRONMENTAL MANAGEMENT  
 CHART VI

Chart Total:  
 General Funds: 23.10 FTE

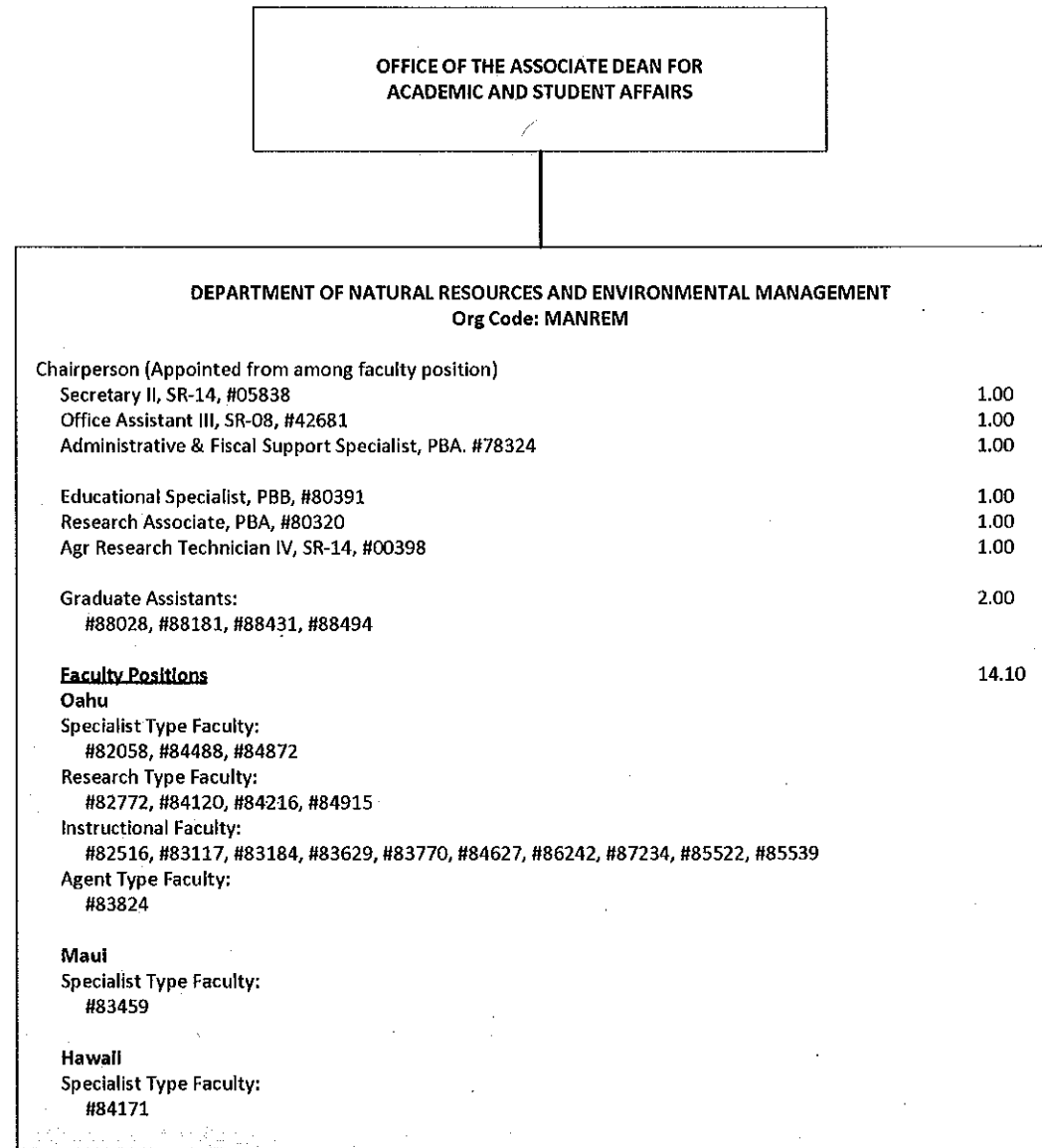


CHART UPDATED  
 JUL 01 2010  
 DATE \_\_\_\_\_

Civil Service position deleted #03397 (1.00)

OFFICE OF THE ASSOCIATE DEAN FOR  
ACADEMIC AND STUDENT AFFAIRS

STATE OF HAWAII  
UNIVERSITY OF HAWAII  
UNIVERSITY OF HAWAII AT MĀNOA  
COLLEGE OF TROPICAL AGRICULTURE AND  
HUMAN RESOURCES  
ORGANIZATION CHART

DEPARTMENT OF PLANT AND ENVIRONMENTAL  
PROTECTION SCIENCES  
CHART VII

Chart Total:  
General Funds: 26.06 FTE

DEPARTMENT OF PLANT AND ENVIRONMENTAL PROTECTION SCIENCES	
Org Code: MAPEPS	
Chairperson (Appointed from among faculty position)	
Secretary II, SR-14, #07477	1.00
Office Assistant III, SR-08, #00794, #15509	2.00
Administrative & Fiscal Support Specialist, PBA, #77864	1.00
Educational Specialist, PBB, #80250	1.00
Research Associate, PBB, #80385, #80388, #81178, #81311	4.00
Research Associate, PBA, #81313	1.00
Agr Research Technician V, SR-16, #00442	1.00
Agr Research Technician IV, SR-14, #24270	1.00
Agr Research Technician III, SR-11, #24269	1.00
Graduate Assistants: #88486, #84932	1.00
<b>Faculty Positions</b>	12.06
<b>Oahu</b>	
Specialist Type Faculty: #82550, #83320, #83513, #84006, #84911	
Research Type Faculty: #82047, #82976, #83067, #83884, #84041, #84316	
Instructional Faculty: #82139, #84138, #85510, #85543, #85547, #85548	
Agent Type Faculty: #82687, #84489, #85551	
<b>Maul</b>	
Research Type Faculty: #86034	
Agent Type Faculty: #85530	
<b>Hawaii</b>	
Research Type Faculty: #83542	
Specialist Type Faculty: #82985	
Agent Type Faculty: #82722, #83462, #85538	
<b>Kauai</b>	
Research Type Faculty: #83840	
Instructional Type Faculty: #85505	
Agent Type Faculty: #83816	

CHART UPDATED  
DATE JUL 01 2010

OFFICE OF THE ASSOCIATE DEAN FOR  
ACADEMIC AND STUDENT AFFAIRS

STATE OF HAWAI'I  
UNIVERSITY OF HAWAI'I  
UNIVERSITY OF HAWAI'I AT MĀNOA  
COLLEGE OF TROPICAL AGRICULTURE AND  
HUMAN RESOURCES  
ORGANIZATION CHART

DEPARTMENT OF TROPICAL PLANT AND SOIL SCIENCE  
Org Code: MATPSS

Chairperson (Appointed from among faculty position)	
Secretary II, SR-14, #00793	1.00
Clerk-Stenographer III, SR-11, #00399	1.00
Administrative & Fiscal Support Specialist, PBA. #77795	1.00
Educational Specialist, PBB, #81362	1.00
Research Associate, PBB, #80270, #80313	2.00
Agr Research Technician V, SR-16, #11019	1.00
Agr Research Technician IV, SR-14, #00397, #05392, #15512	3.00
Graduate Assistants:	1.50
#88171, #88423, #85388T	
<u>Faculty Positions</u>	21.28
<u>Oahu</u>	
Specialist Type Faculty:	
#82598, #83159, #83304, #83388, #83682, #84321, #84501, #84916, #85555, #86275	
Research Type Faculty:	
#82023, #82240, #82464, #82747, #83142, #83260, #83740, #83938, #84067, #84408, #84420, #84481	
Agent Type Faculty:	
#82181, #82704, #82881, #85563, #85778	
<u>Maui</u>	
Research Type Faculty:	
#84530	
Agent Type Faculty:	
#83848, #84075, #85477, #87584	
<u>Hawaii</u>	
Research Type Faculty:	
#83073, #83286, #84354	
Specialist Type Faculty:	
#83515	
Agent Type Faculty:	
#82758, #83054, #82951, 85542	
<u>Kauai</u>	
Research Type Faculty:	
#84500	
Agent Type Faculty:	
#82196	

DEPARTMENT OF TROPICAL PLANT AND SOIL SCIENCE  
CHART VIII

Chart Total:  
General Funds: 32.28 FTE  
General Funds (Auth Temp): 0.50 FTE

CHART UPDATED

DATE JUL 01 2010



STATE OF HAWAII  
UNIVERSITY OF HAWAII  
UNIVERSITY OF HAWAII AT MĀNOA  
COLLEGE OF TROPICAL AGRICULTURE AND  
HUMAN RESOURCES  
ORGANIZATION CHART

COUNTY ADMINISTRATION  
CHART IX

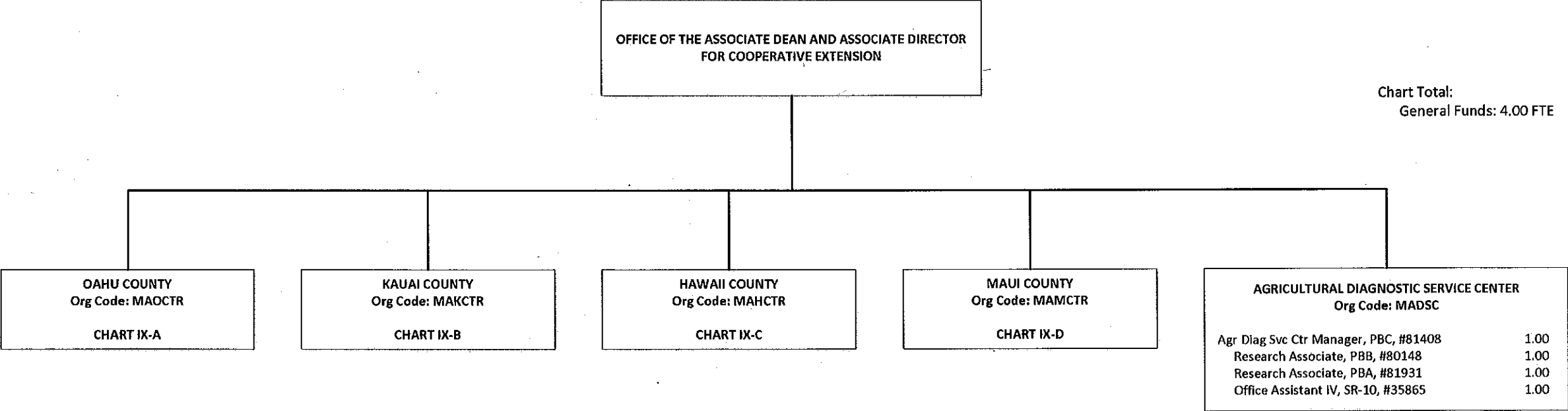


CHART UPDATED

DATE JUL 01 2010

STATE OF HAWAII  
UNIVERSITY OF HAWAII  
UNIVERSITY OF HAWAII AT MĀNOA  
COLLEGE OF TROPICAL AGRICULTURE AND  
HUMAN RESOURCES  
ORGANIZATION CHART

OAHU COUNTY  
CHART IX-A

Chart Total:  
General Funds: 31.00 FTE

OFFICE OF THE ASSOCIATE DEAN AND ASSOCIATE DIRECTOR FOR COOPERATIVE EXTENSION	
OAHU COUNTY Org Code: MAOCTR	
County Administrator, #89431	1.00
<b>HONOLULU</b>	
Secretary II, SR-14, #21284	1.00
<b>WAIHAWA</b>	
Clerk-Stenographer III, SR-11, #00806	1.00
<b>URBAN GARDEN CENTER</b>	
Office Assistant IV, SR-10, #00802	1.00
<b>POAMOHO EXPERIMENT STATION</b>	
Agr Res Tech VI, SR-18, #00429	1.00
Agr Res Tech III, SR-11, #15515	1.00
<b>WAIMANALO EXPERIMENT STATION</b>	
Agr Res Tech VI, SR-18, #007479	1.00
Agr Res Tech IV, SR-14, #09077, #11021, #11023	3.00
Agr Res Tech III, SR-11, #4484	1.00
Bulldozer Operator II, BC-10, #4480	1.00
Agr Res Tech VI, SR-18, #00428	1.00
Agr Res Tech V, SR-16, #00396, #11024	2.00
Agr Res Tech IV, SR-14, #00433	1.00
Agr Res Tech III, SR-11, #00418, #00434, #03712	3.00
Equipment Operator III, BC-09, #00419	1.00

CHART UPDATED  
JUL 01 2010  
DATE \_\_\_\_\_

Civil Service positions deleted #00395, #401 #00413, #00432,  
#00443, #00445, #4477, #04478, #4481, #07481, #11022  
(11.00)

STATE OF HAWAII  
 UNIVERSITY OF HAWAII  
 UNIVERSITY OF HAWAII AT MĀNOA  
 COLLEGE OF TROPICAL AGRICULTURE AND  
 HUMAN RESOURCES  
 ORGANIZATION CHART

KAUAI COUNTY  
 CHART IX-B

Chart Total:  
 General Funds: 8.00 FTE

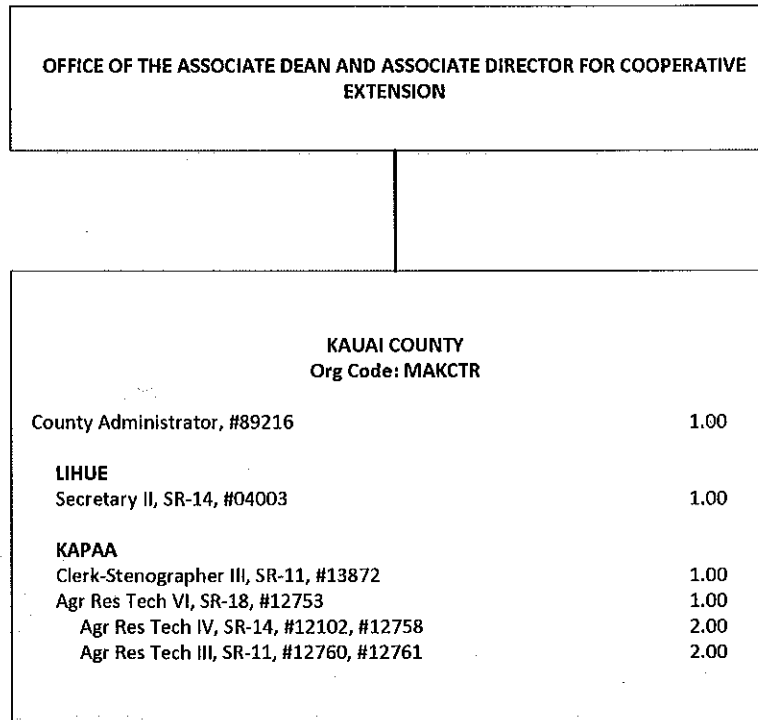


CHART UPDATED  
 DATE JUL 01 2010

OFFICE OF THE ASSOCIATE DEAN AND ASSOCIATE DIRECTOR FOR COOPERATIVE  
EXTENSION

HAWAII COUNTY  
Org Code: MAHCTR

County Administrator, #89213	1.00
<b>KOMOHANA</b>	
Secretary II, SR-14, #13871	1.00
Office Assistant III, SR-08, #00791	1.00
<b>KONA</b>	
Office Assistant IV, SR-10, #00797	1.00
<b>KAMUELA</b>	
Office Assistant IV, SR-10, #00799	1.00

HAWAII COUNTY TECHNICAL SUPPORT  
Org Code: MAHTTR

Educational Specialist, PBB, #80311	1.00
<b>EAST HAWAII</b>	
Agr Res Tech VI, SR-18, #12099	1.00
<b>WAIAKEA</b>	
Agr Res Tech V, SR-16, #12101, #12094, #14166	3.00
Agr Res Tech IV, SR-14, #12096, #12767, #14168, #12098, #15497	5.00
Agr Res Tech III, SR-11, #17602	1.00
Building Maintenance Worker I, BC-09, #12095	1.00
<b>VOLCANO</b>	
Agr Res Tech V, SR-16, #13206	1.00
Agr Res Tech IV, SR-14, #12097	1.00
<b>MALAMA-KI</b>	
Agr Res Tech III, SR-11, #12765	1.00
<b>WEST HAWAII</b>	
Agr Res Tech VI, SR-18, #13530	1.00
<b>MEALANI</b>	
Agr Res Tech V, SR-16, #13534	1.00
Agr Res Tech IV, SR-14, #12100	1.00
Agr Res Tech III, SR-11, #13205, #44868, #44867	3.00
<b>HAMAKUA</b>	
<b>KONA</b>	
Agr Res Tech V, SR-16, #00409	1.00
Agr Res Tech IV, SR-14, #22912	1.00

STATE OF HAWAII  
UNIVERSITY OF HAWAII  
UNIVERSITY OF HAWAII AT MĀNOA  
COLLEGE OF TROPICAL AGRICULTURE AND  
HUMAN RESOURCES  
ORGANIZATION CHART

HAWAII COUNTY  
CHART IX-C

Chart Total:  
General Funds: 33.00 FTE

CHART UPDATED

DATE JUL 01 2010

Civil Service positions deleted #09084, #12766, #13536,  
#13709, #14590 (5.00)

STATE OF HAWAI'I  
UNIVERSITY OF HAWAI'I  
UNIVERSITY OF HAWAI'I AT MĀNOA  
COLLEGE OF TROPICAL AGRICULTURE AND  
HUMAN RESOURCES  
ORGANIZATION CHART

MAUI COUNTY  
CHART IX-D

Chart Total:  
General Funds: 16.00 FTE

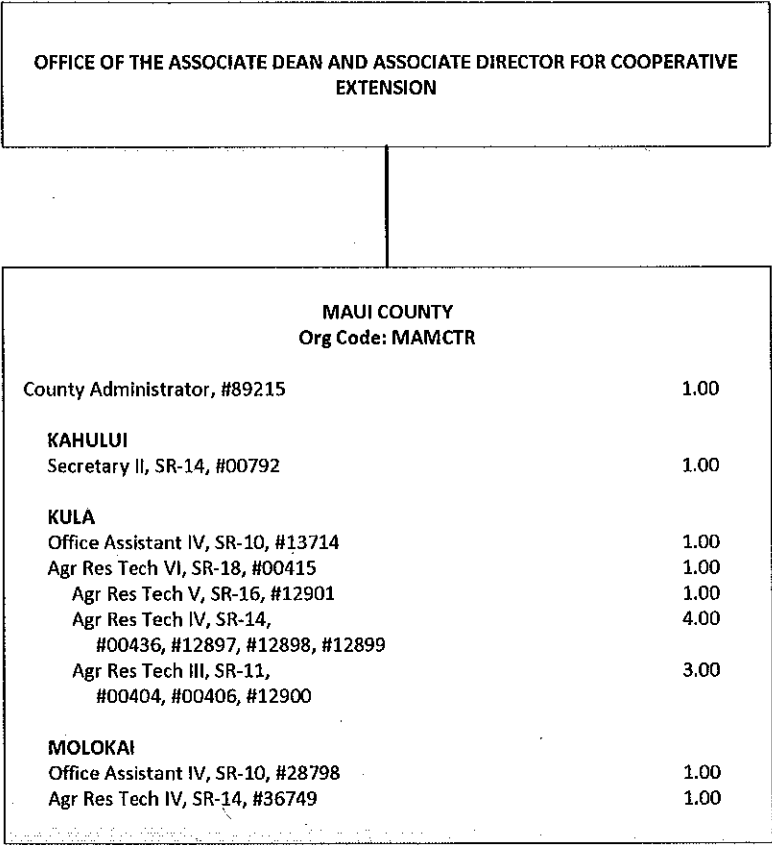


CHART UPDATED

DATE JUL 01 2010

Civil Service position deleted #12902, #42422 (2.00)