

GRAND TOTAL BY FUND

GENERAL FUND FTE	187.00
SPECIAL FUND (B) FTE	66.00
REVOLVING FUND (W) FTE	24.25

STATE OF HAWAII
UNIVERSITY OF HAWAII
UNIVERSITY OF HAWAII AT MANOA
OFFICE OF THE VICE CHANCELLOR
FOR STUDENTS

ORGANIZATIONAL CHART
CHART IV

GENERAL FUND FTE 18.00

*New, position number. Redescription pending.
**Also serves as Enrollment Management and Director

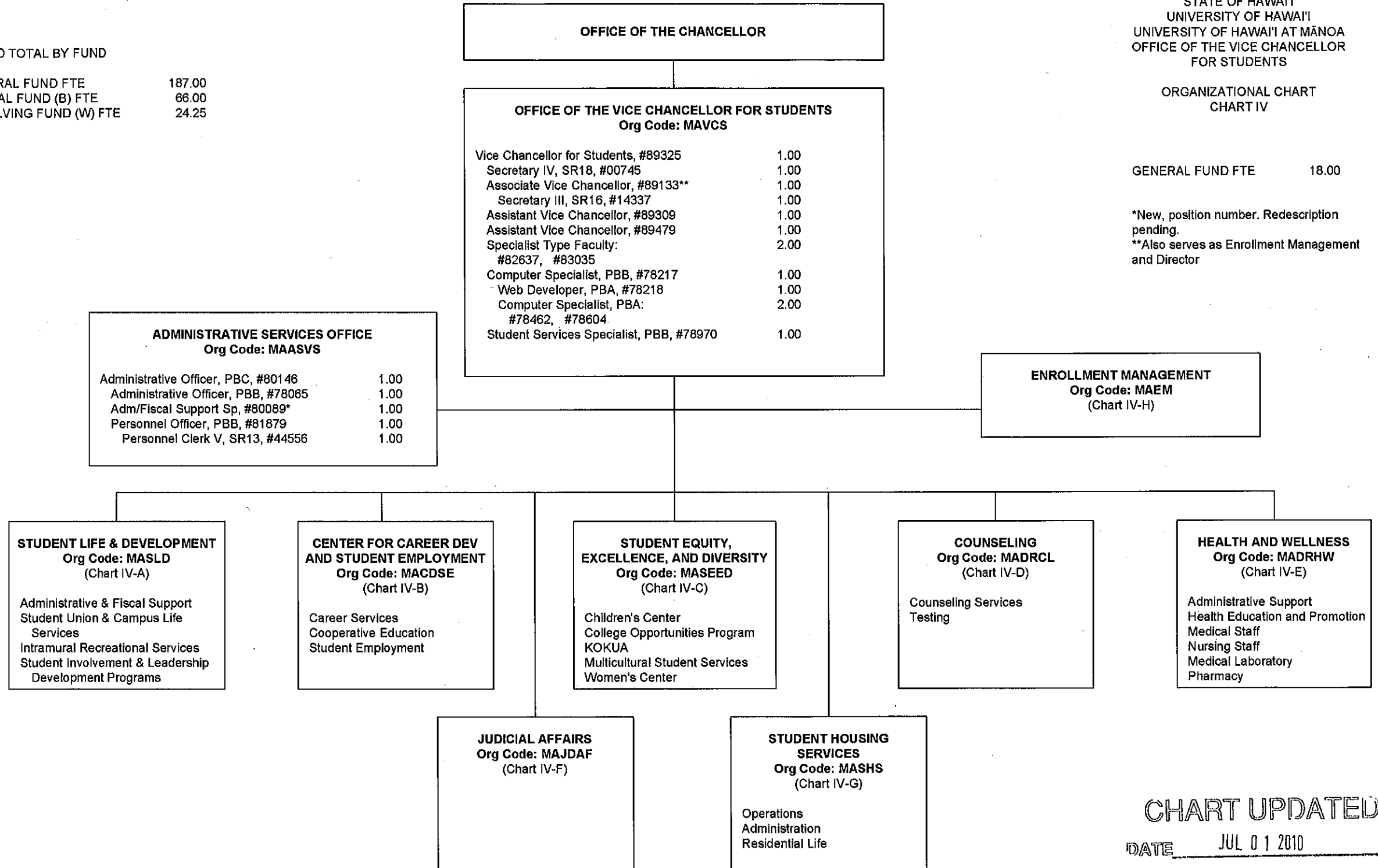


CHART UPDATED
DATE JUL 01 2010

OFFICE OF THE CHANCELLOR

OFFICE OF THE VICE CHANCELLOR FOR STUDENTS

STUDENT LIFE & DEVELOPMENT Org Code: MASLD	
Director of Student Affairs (SLD), #89190***	1.00
Student Services Specialist, PBB, #77071	1.00
Student Services Specialist, PBA, #78447	1.00
Student Services Specialist, PBB, #79129	1.00

ADMINISTRATIVE & FISCAL SUPPORT Org Code: MAASSL	
Administrative Officer, PBB, #80163(B)	1.00 (B)
Administrative & Fiscal Support Specialist, PBA, #78450 (B), #80649 (B)	2.00 (B)
Account Clerk III, SR11, #45362(B)	1.00 (B)

STUDENT UNION & CAMPUS LIFE SERVICES Org Code: MASUSL	
Specialist Type Faculty, #88328 (B)	1.00 (B)
Student Services Specialist, PBB, #80660(B)	1.00 (B)
Bldg Maintenance Worker, BC09, #28597(B)	1.00 (B)
Bldg & Grounds Utility Worker, BC05, #44085 (B), #44109 (B), #45379 (B)	3.00 (B)
Student Services Specialist, PBA, #78831(B)	1.00 (B)
Janitor II, BC02, #25329 (B), #25392 (B), #44089 (B), #46560 (B)	4.00 (B)
Student Services Specialist, PBB, #78991(B)	1.00 (B)
Student Services Specialist, PBA, #80631 (B), #80942 (B)	2.00 (B)
Specialist Type Faculty: #88765 (B)	1.00 (B)

INTRAMURAL RECREATIONAL SERVICES Org Code: MAIRSL	
Specialist Type Faculty, #85083	1.00
Specialist Type Faculty: #83512	1.00
Office Assistant III, SR08, #26460	1.00
Student Services Specialist, PBB, #80025(B)	1.00 (B)
Office Assistant III, SR08, #25699(B)	1.00 (B)

STUDENT INVOLVEMENT & LEADERSHIP DEVELOPMENT PROGRAMS Org Code: MASISL	
Specialist Type Faculty, #83705	1.00
Specialist Type Faculty: #70078, #82597, #82864	3.00
Student Services Specialist, PBB, #81510 (W)	1.00 (W)
Student Services Specialist, PBB, #81137 (W), #81486 (W)	2.00 (W)
Specialist Type Faculty, #88334 (W)	1.00 (W)

STATE OF HAWAII
UNIVERSITY OF HAWAII
UNIVERSITY OF HAWAII AT MĀNOA
OFFICE OF THE VICE CHANCELLOR
FOR STUDENTS
STUDENT LIFE & DEVELOPMENT

ORGANIZATIONAL CHART
CHART IV-A

GENERAL FUND FTE 11.00
SPECIAL FUND FTE (B) 21.00
REVOLVING FUND FTE (W) 6.00 ++

++ 2.00 FTE pending establishment due to
abolished Pos #81186 & 81506
*** To be redescribed or reclassified

CHART UPDATED

DATE JUL 01 2010

STATE OF HAWAII
UNIVERSITY OF HAWAII
UNIVERSITY OF HAWAII AT MĀNOA
OFFICE OF THE VICE CHANCELLOR
FOR STUDENTS
CENTER FOR CAREER
DEVELOPMENT AND STUDENT
EMPLOYMENT

ORGANIZATIONAL CHART
CHART IV-B

GENERAL FUND FTE 14.00*
GENERAL FUND FTE (AUTH TEMP) 1.00

*Abolished position #78605 & #88326 (2.00 FTE)

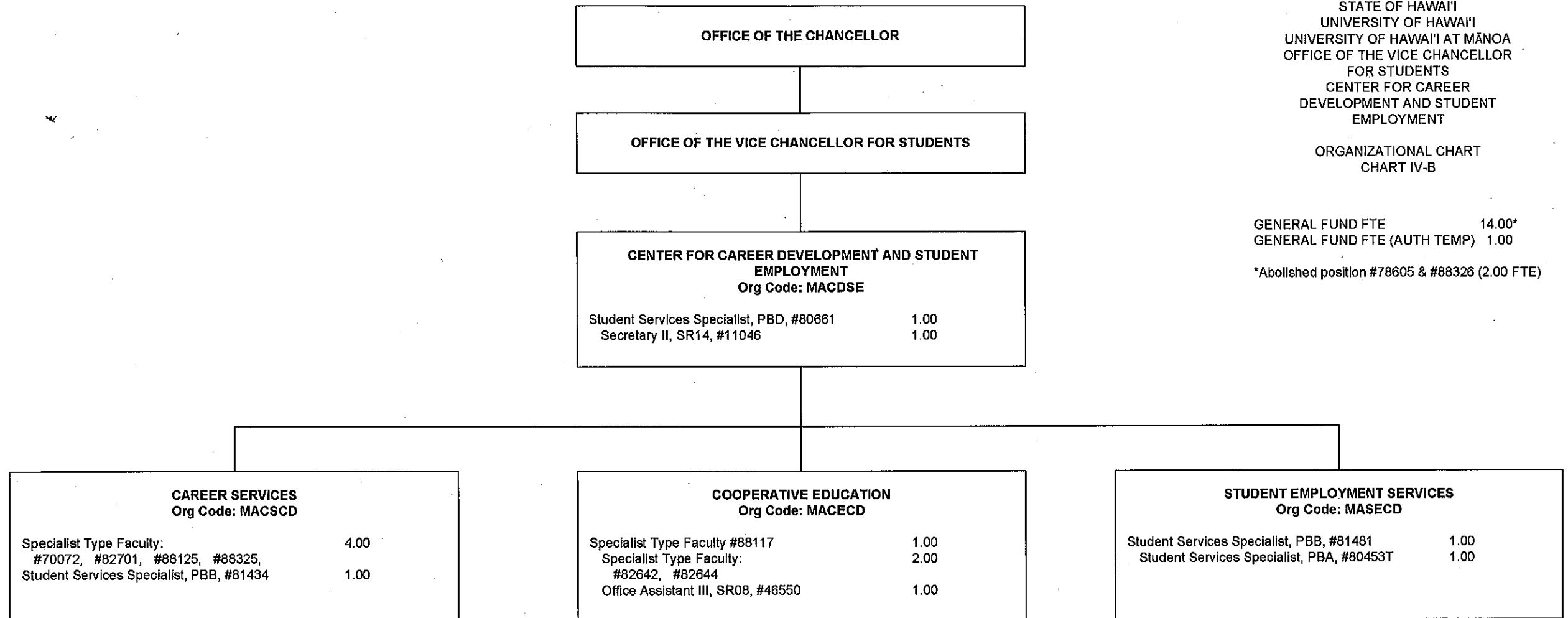


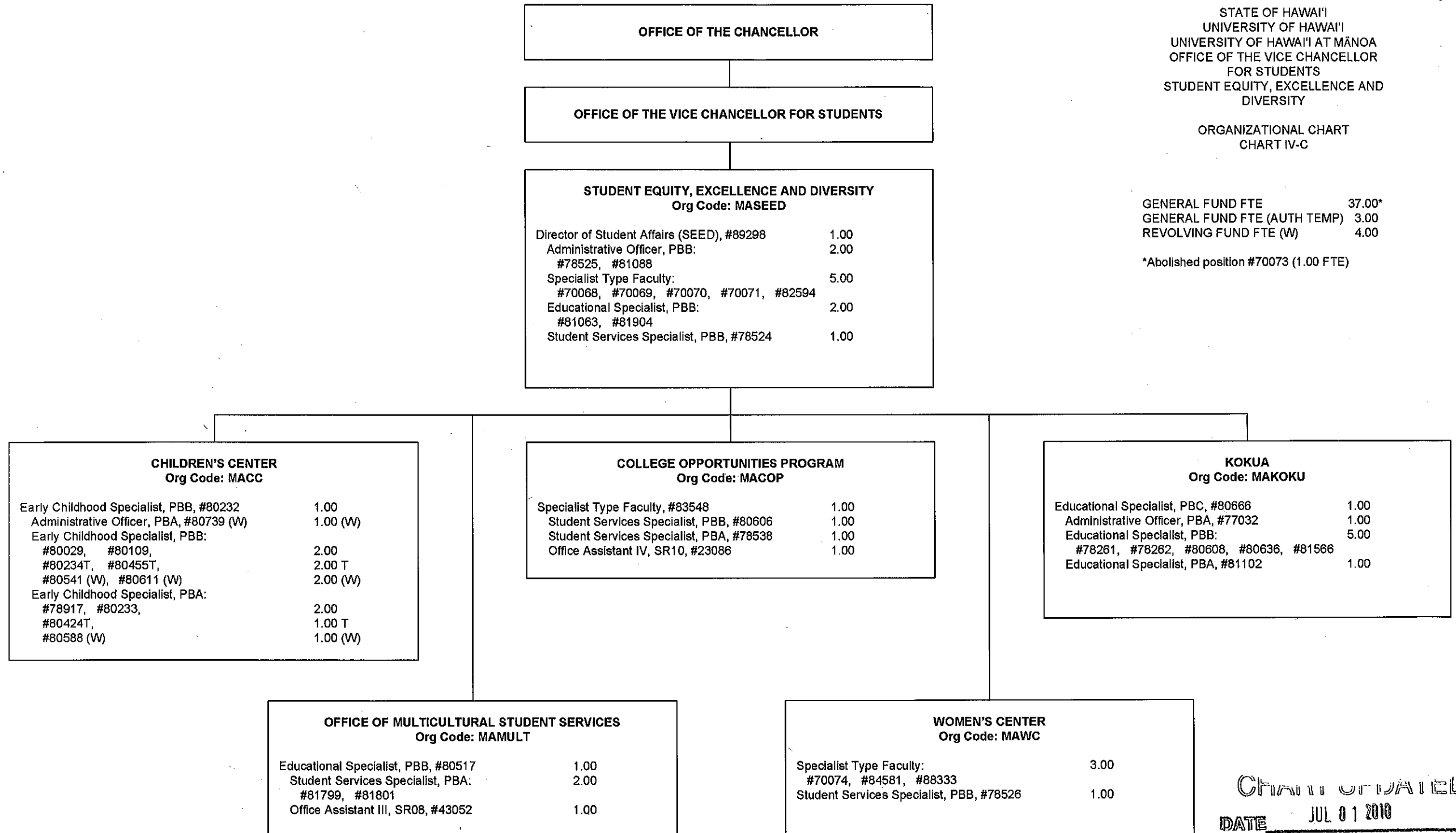
CHART UPDATED
DATE JUL 01 2010

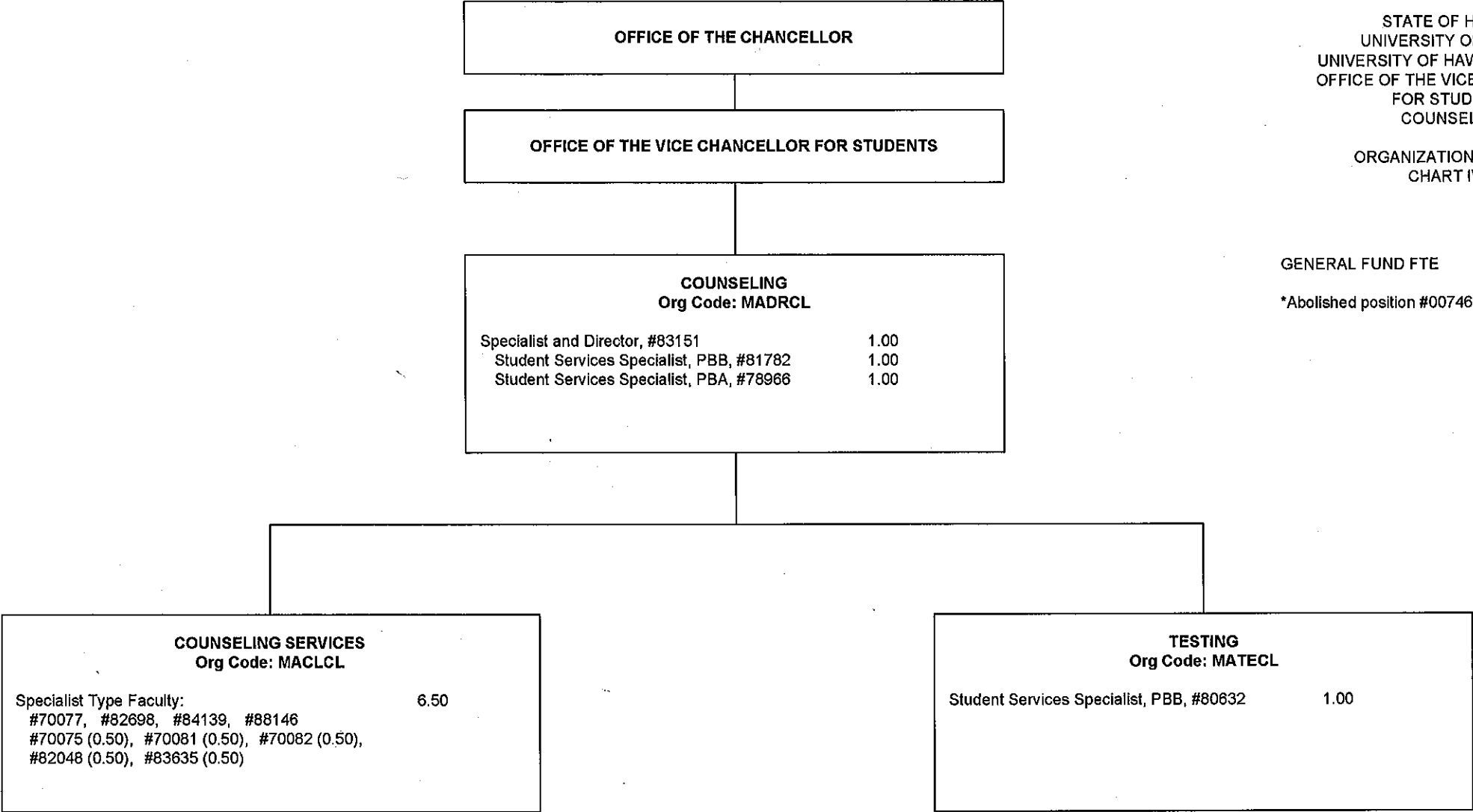
STATE OF HAWAII
UNIVERSITY OF HAWAII
UNIVERSITY OF HAWAII AT MĀNOA
OFFICE OF THE VICE CHANCELLOR
FOR STUDENTS
STUDENT EQUITY, EXCELLENCE AND
DIVERSITY

ORGANIZATIONAL CHART
CHART IV-C

GENERAL FUND FTE 37.00*
GENERAL FUND FTE (AUTH TEMP) 3.00
REVOLVING FUND FTE (W) 4.00

*Abolished position #70073 (1.00 FTE)





STATE OF HAWAII
UNIVERSITY OF HAWAII
UNIVERSITY OF HAWAII AT MĀNOA
OFFICE OF THE VICE CHANCELLOR
FOR STUDENTS
COUNSELING

ORGANIZATIONAL CHART
CHART IV-D

GENERAL FUND FTE 11.50*
*Abolished position #00746 (1.00 FTE)

OFFICE OF THE CHANCELLOR

OFFICE OF THE VICE CHANCELLOR FOR STUDENTS

HEALTH & WELLNESS
Org Code: MADRHW
Specialist and Director, #82341 1.00

ADMINISTRATIVE SUPPORT
Org Code: MAASHW
Specialist Type Faculty, #83539 1.00
Secretary II, SR14, #15353 1.00
Account Clerk III, SR11, #21512 1.00
Medical Records Technician VI, SR13, #03723 1.00
Office Assistant IV, SR10, #25410 (W) 1.00 (W)
Cashier I, SR10, #112430 (W) 1.00 (W)

HEALTH EDUCATION AND PROMOTION
Org Code: MAHPHW
Specialist Type Faculty: 2.00
#70079, #88317

MEDICAL STAFF
Org Code: MAHSHW
Advanced Practice Registered Nurse II, SR28, #41706 (W) 1.00 (W)
Specialist Type Faculty: 2.00 (W)
#83261 (0.50) (W), #83397 (0.50) (W),
#84576 (0.50) (W), #84576A (0.50) (W)

NURSING STAFF
Org Code: MANSHW
Registered Nurse IV, SR22, #10312 (W) 1.00 (W)
Registered Nurse III, SR20: 4.00 (W)
#13615 (W), #13616 (W), #18091 (W),
#22672 (W)

LABORATORY
Org Code: MALBHW
Medical Technologist, PBB: 1.00
#78784 (0.50), #80671 (0.50)

PHARMACY
Org Code: MAPHHW
Pharmacist, PBC: 0.50
#78521 (0.50) 0.25 (W)
#81877 (0.25) (W)

STATE OF HAWAII
UNIVERSITY OF HAWAII
UNIVERSITY OF HAWAII AT MANOA
OFFICE OF THE VICE CHANCELLOR
FOR STUDENTS
HEALTH AND WELLNESS

ORGANIZATIONAL CHART
CHART IV-E

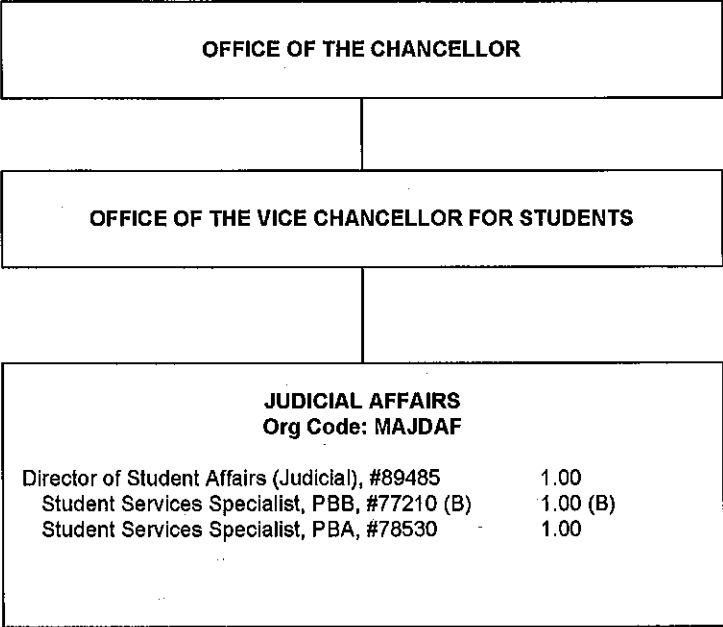
GENERAL FUND FTE 8.50
REVOLVING FUND FTE (W) 10.25

CHART UPDATED

DATE JUL 01 2010

STATE OF HAWAII
UNIVERSITY OF HAWAII
UNIVERSITY OF HAWAII AT MANOA
OFFICE OF THE VICE CHANCELLOR
FOR STUDENTS
JUDICIAL AFFAIRS

ORGANIZATIONAL CHART
CHART IV-F



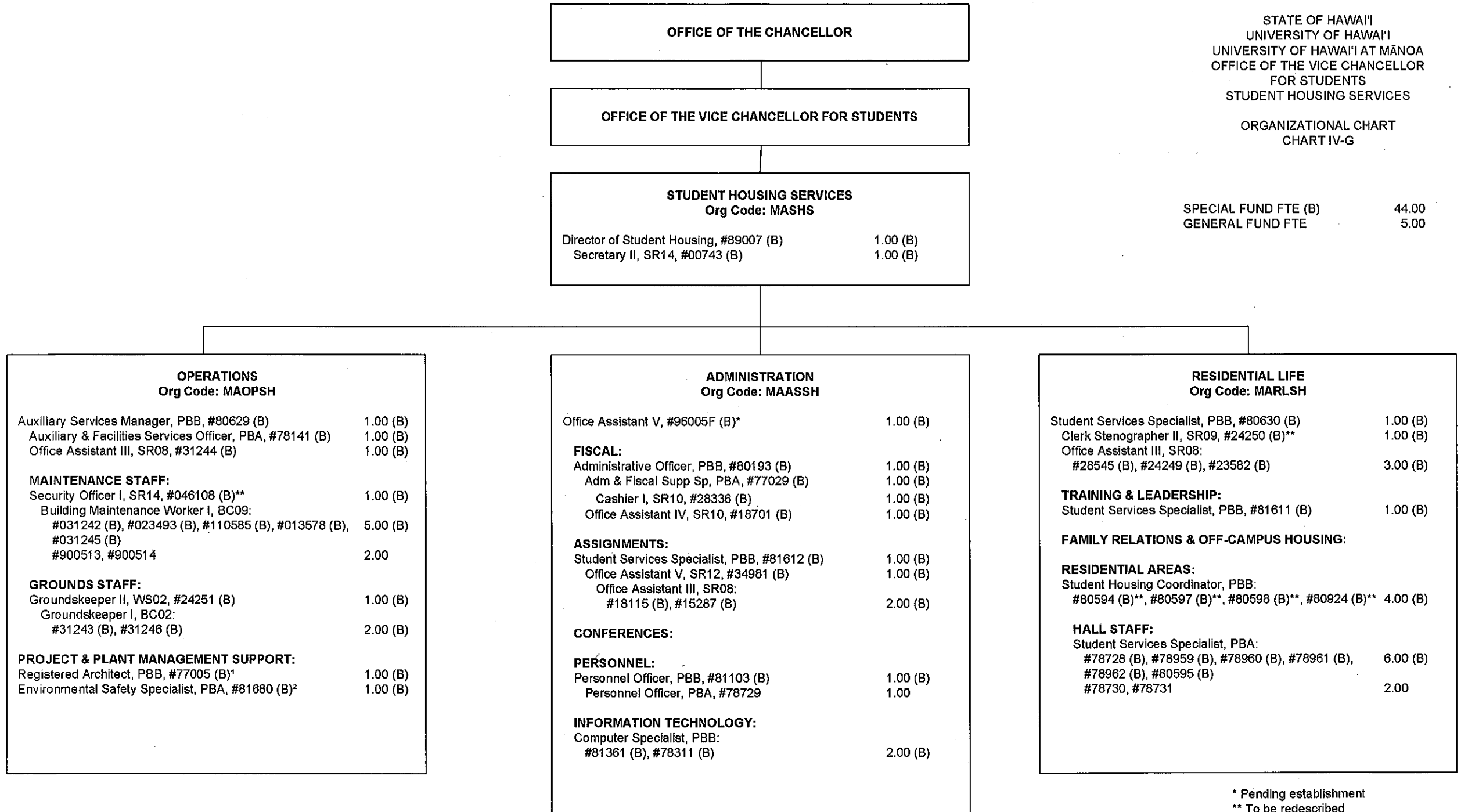
GENERAL FUND FTE	2.00
SPECIAL FUND FTE (B)	1.00

CHART UPDATED
JUL 0 1 2010
DATE _____

STATE OF HAWAII
UNIVERSITY OF HAWAII
UNIVERSITY OF HAWAII AT MĀNOA
OFFICE OF THE VICE CHANCELLOR
FOR STUDENTS
STUDENT HOUSING SERVICES

ORGANIZATIONAL CHART
CHART IV-G

SPECIAL FUND FTE (B) 44.00
GENERAL FUND FTE 5.00



* Pending establishment
** To be redescribed

CHART UPDATED
JUL 01 2010
DATE _____

Positions 78732 & 99003F authorized
general fund positions to be allocated.

¹ Supervised by Facilities Management
² Supervised by Environmental Health & Safety

OFFICE OF THE CHANCELLOR

OFFICE OF THE VICE CHANCELLOR FOR STUDENTS

ENROLLMENT MANAGEMENT
Org Code: MAEM

Associate Vice Chancellor, #89133***
Secretary II, SR14*
Administrative Officer, PBB, #78674 1.00
Account Clerk III, SR-11*

INFORMATION AND COMPUTER SERVICES
Org Code: MAITEM

Computer Specialist, PBB, #80018** 1.00
Computer Specialist, PBB:
#78228**, #80017, #81134 3.00

OFFICE OF ADMISSIONS
Org Code: MAOAEM

Student Services Specialist, PBC, #81154** 1.00
Secretary II, SR14, #14866 1.00
Clerk Supervisor III, SR14, #00748 1.00
Office Assistant IV, SR10:
#00772, #12842, #13495, #13496, #18009, #26538,
#900015 7.00
Office Assistant III, SR8, #900016 1.00
Student Services Specialist, PBB:
#78658, #80626, #81071, #81414, #81734 5.00
Student Services Specialist, PBB, #80625 1.00
Office Assistant IV, SR10, #11496 1.00
Student Services Specialist, PBB, #80530 1.00
Student Services Specialist, PBB, #78660 1.00
Student Services Specialist, PBA:
#77518, #77519, #77520, #77521, #77885, #78659 6.00
Student Services Specialist, PBA:
#78105, #78192 2.00
Student Services Specialist, PBA, #78406 1.00
Office Assistant IV, SR10:
#15501, #40004, #40005, #900159 4.00
Office Assistant III, SR8, #40003 1.00

Student Services Specialist, PBB, #80463** 1.00
Student Services Specialist, PBB:
#78702, #78716, #80096 3.00
Student Services Specialist, PBA:
#78703, #78825, #78826, #78827 4.00

OFFICE OF THE REGISTRAR
Org Code: MARGEM

Student Services Specialist, PBC, #81614 1.00

Student Services Specialist, PBB, #80658 1.00

Student Services Specialist, PBA:
#78405, #78657, 2.00
#79064 (W) 1.00 (W)

Student Services Specialist, PBA, #78828 1.00
Office Assistant IV, SR10:
#00750, #14864, #15502, #21430, #40006 5.00
#14865(W) 1.00 (W)
Office Assistant III, SR8:
#13494 (W), #26539 (W) 2.00 (W)

Scheduler, SR20, #05837** 1.00
Office Assistant, IV, SR10, #13959** 1.00

FINANCIAL AID SERVICES
Org Code: MAFAEM

Student Services Specialist, PBC, #77250 1.00
Secretary II, SR14, #05737 1.00

Student Services Specialist, PBB, #81913 1.00

Student Services Specialist, PBB:
#78225, #78226, #78227, #80922, #81151
#81607, #81609 7.00

Student Services Specialist, PBA: 6.00
#78760, #78761, #78224, #78951, #81606,
#81608

STATE OF HAWAII
UNIVERSITY OF HAWAII
UNIVERSITY OF HAWAII AT MANOA
OFFICE OF THE VICE CHANCELLOR
FOR STUDENTS
ENROLLMENT MANAGEMENT

ORGANIZATIONAL CHART
CHART IV-H

GENERAL FUND FTE 80.00****
REVOLVING FUND FTE (W) 4.00

****Abolished position numbers 14863, 15265,
17599, 17600, and 22321
(General Funds 5.00)

* New position approved in 2/17/05 reorg; position number to be determined
** Position to be reclassified/redescribed
*** Associate Vice Chancellor position #89133 position count reflected on chart IV.

CHART UPDATED
JUL 01 2010
DATE _____