

Position Organization Chart

Chart I

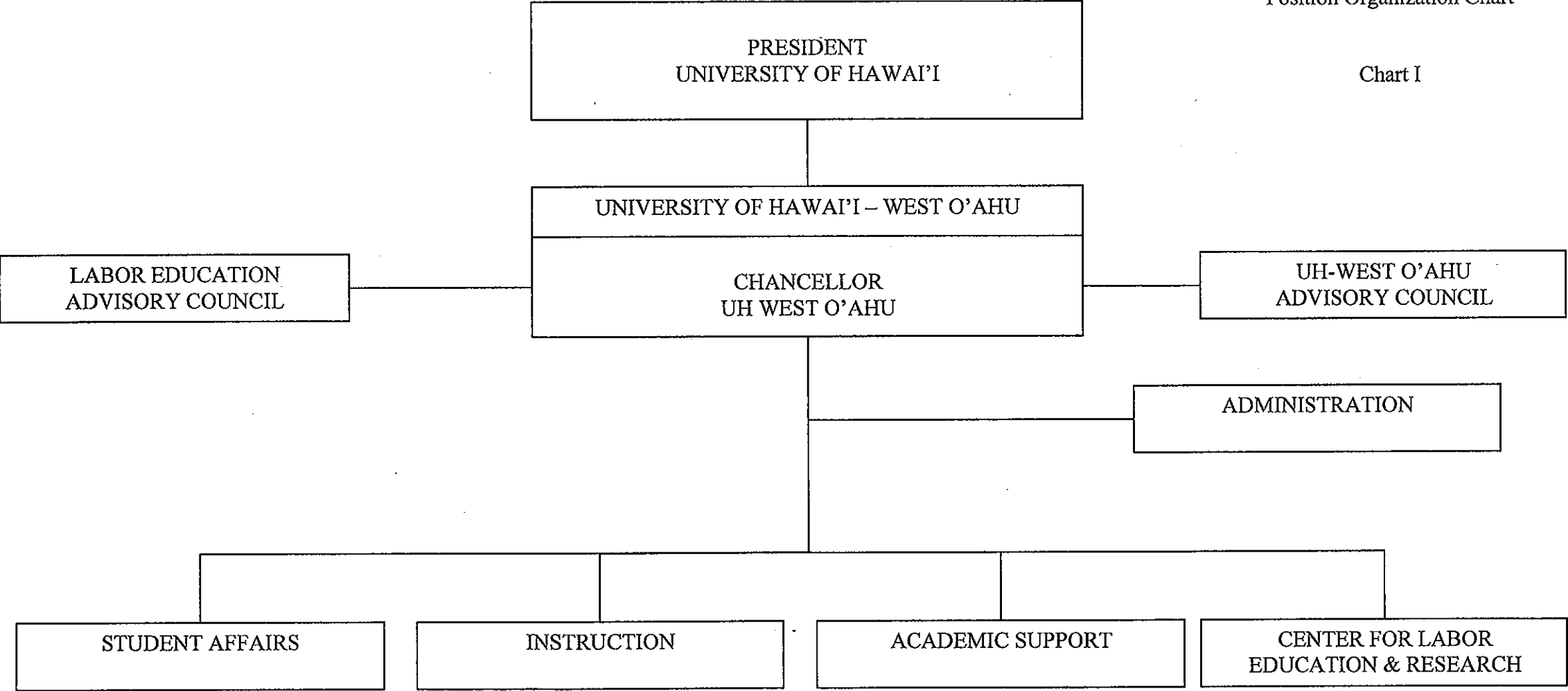


CHART UPDATED

DATE JUL 01 2010

State of Hawai'i
University of Hawai'i
University of Hawai'i - West O'ahu
Office of the Chancellor

Position Organization Chart

Chart II

General Funds 5.00
*Special Funds 1.00 (Temporary)

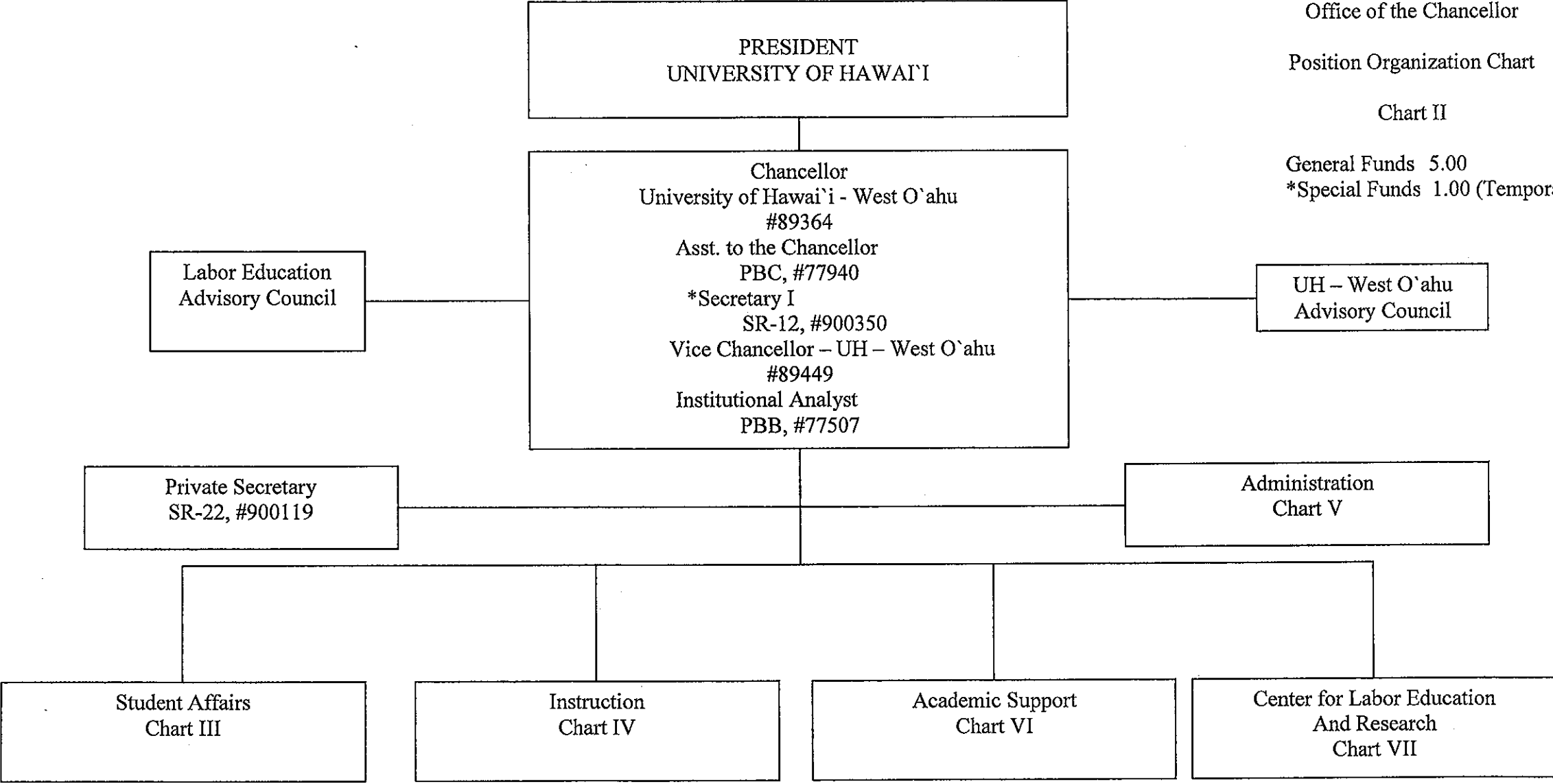


CHART UPDATED
JUL 01 2010

DATE _____

State of Hawai'i
University of Hawai'i
University of Hawai'i - West O'ahu
Student Affairs

Position Organization Chart

Chart III

General Funds 18.00

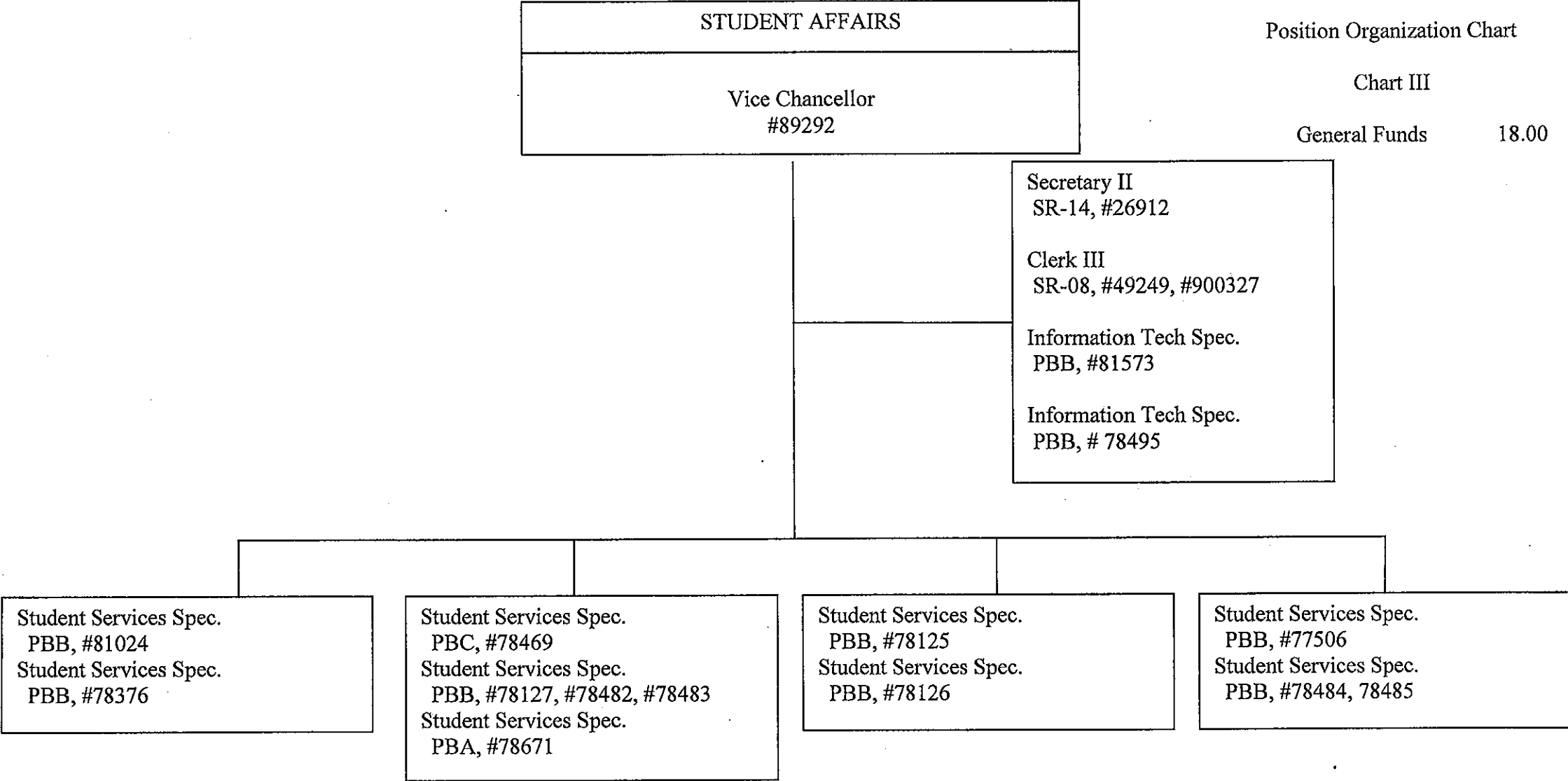


CHART UPDATED
JUL 01 2010
DATE _____

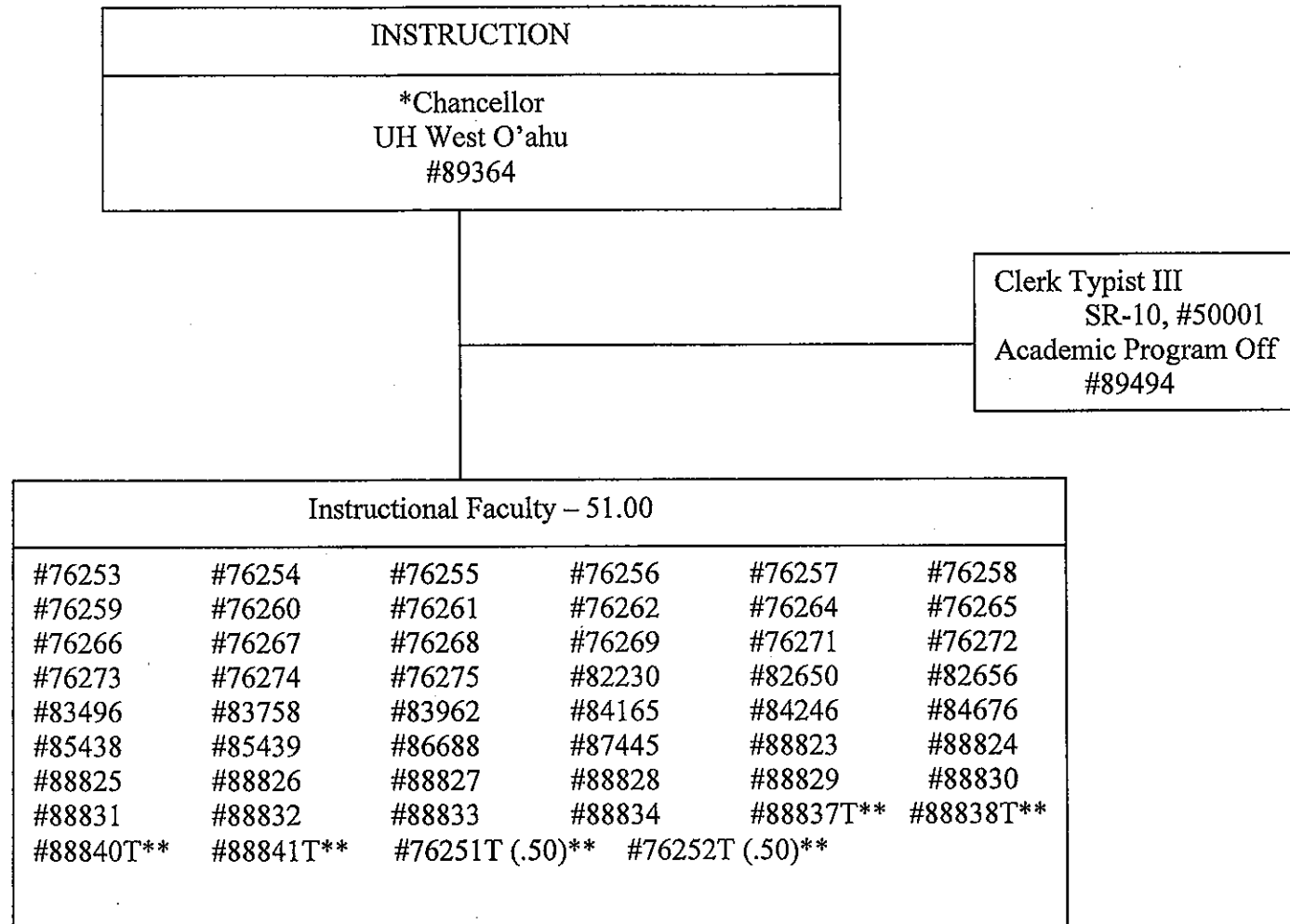
State of Hawai'i
University of Hawai'i
University of Hawai'i - West O'ahu
Instruction

Position Organization Chart

Chart IV

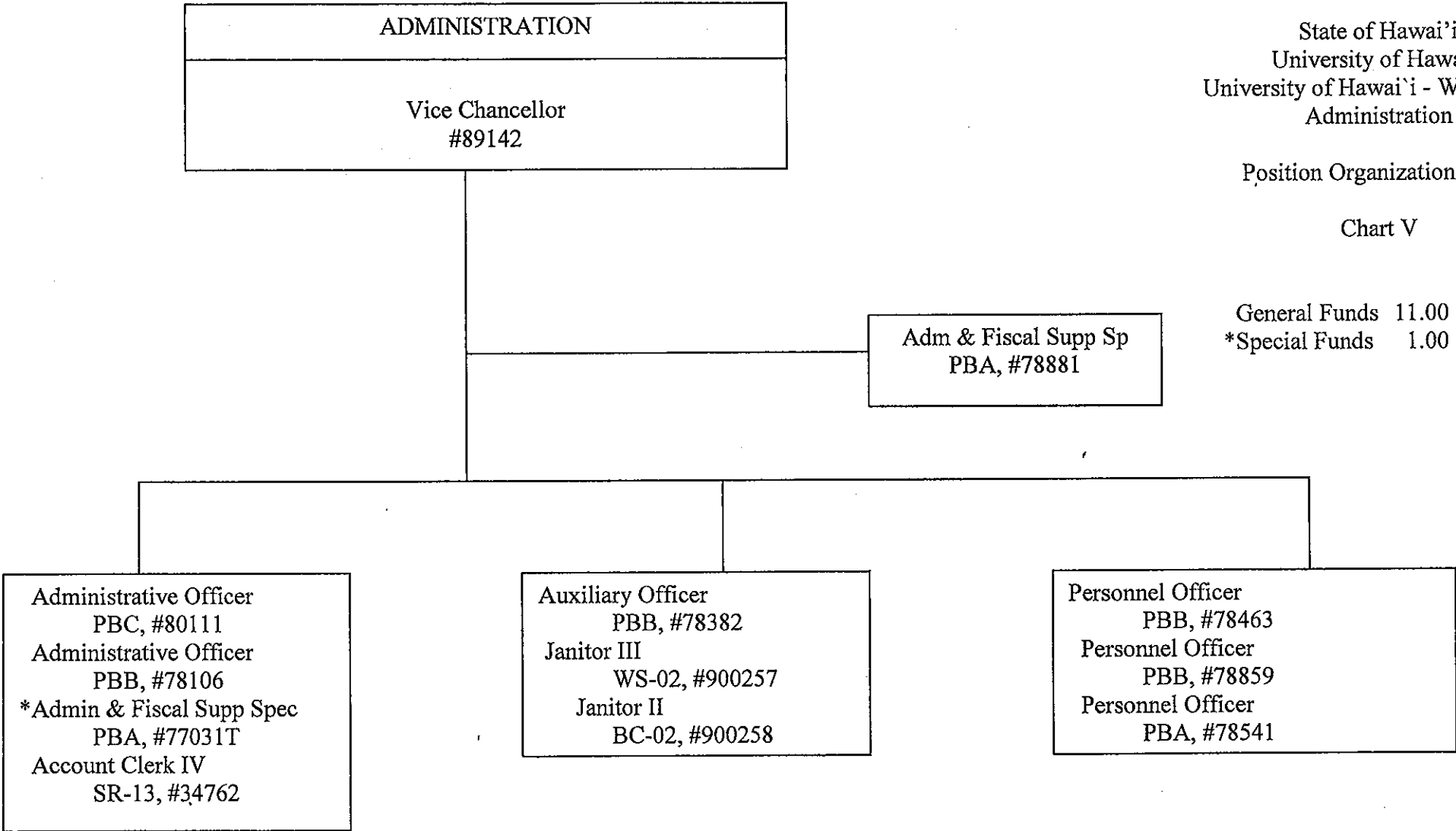
General Funds 48.00

**Special Funds 5.00 (Temporary)



*Position count not included on this page

CHART UPDATED
JUL 01 2010
DATE _____



State of Hawai'i
University of Hawai'i
University of Hawai'i - West O'ahu
Administration

Position Organization Chart

Chart V

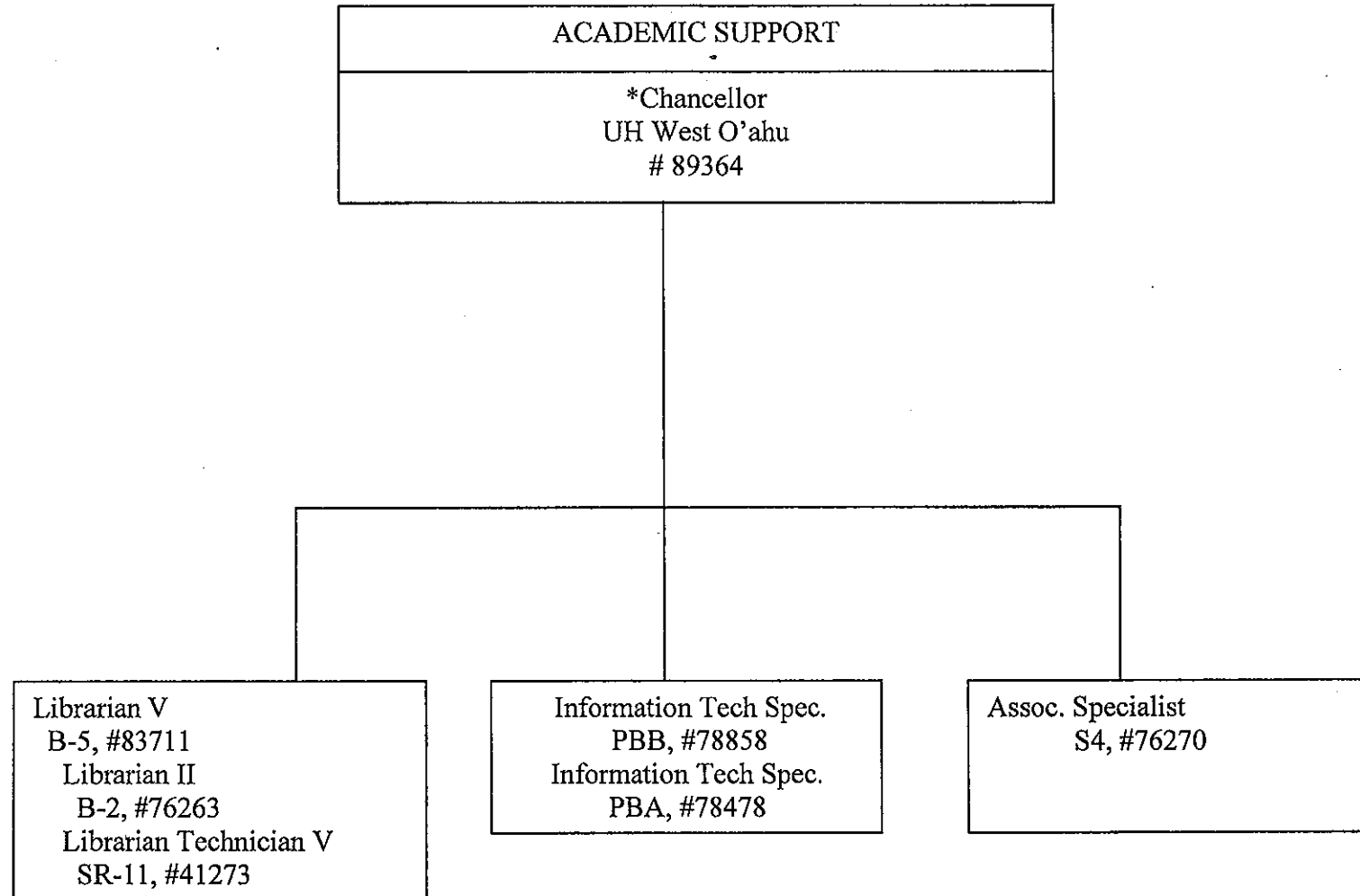
General Funds 11.00
*Special Funds 1.00 (Temporary)

State of Hawai'i
University of Hawai'i
University of Hawai'i - West O'ahu
Academic Support

Position Organization Chart

Chart VI

General Funds 6.00



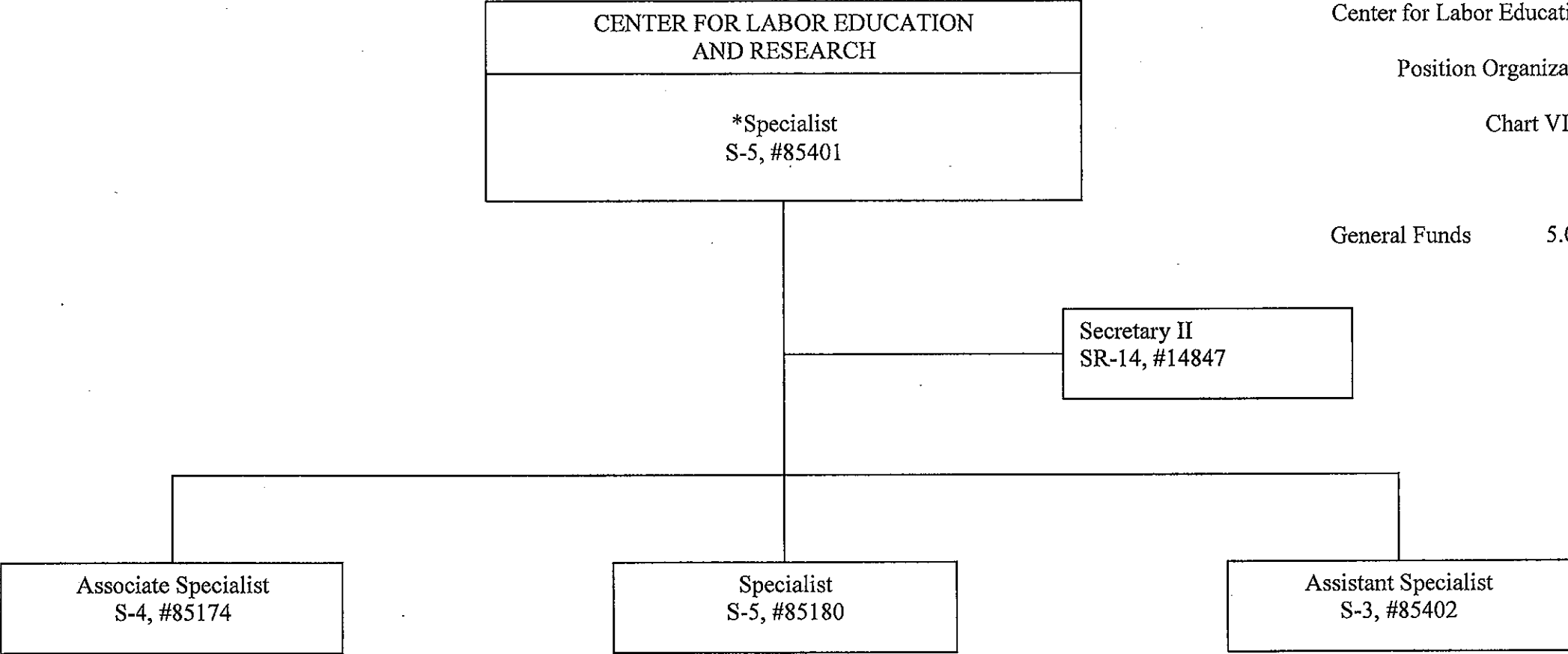
* Position count not included on this page.

CHART UPDATED
DATE JUL 01 2010

Position Organization Chart

Chart VII

General Funds 5.00



*Director

CHART UPDATED

DATE JUL 01 2010