

OFFICE OF THE PRESIDENT UNIVERSITY OF HAWAI'I SYSTEM	
President, University of Hawai'i System	89058 <sup>1</sup>

OFFICE OF THE EXECUTIVE VICE PRESIDENT FOR ACADEMIC AFFAIRS/PROVOST	
Executive Vice President for Academic Affairs/Provost	89051
Private Secretary II	SR-22 900029

STATE OF HAWAI'I

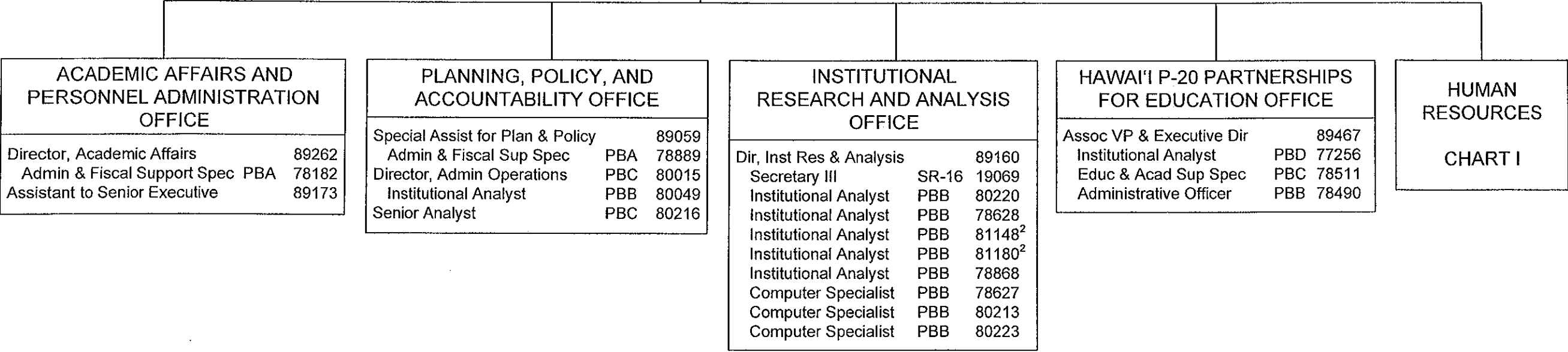
UNIVERSITY OF HAWAI'I

SYSTEMWIDE ADMINISTRATION

EXECUTIVE VICE PRESIDENT FOR

ACADEMIC AFFAIRS/PROVOST

POSITION ORGANIZATION CHART



<sup>1</sup> Excluded from position count

<sup>2</sup> Part of UOH 902 appropriation reflected organizationally on this chart  
Positions appropriated but not established (MOF B): 99969F, 99970F

CHART UPDATED

DATE JUL 01 2011

	Perm
General Funds (UOH903)	22.00
General Funds (UOH 902)	2.00
Special Funds (B) (UOH 903)	2.00

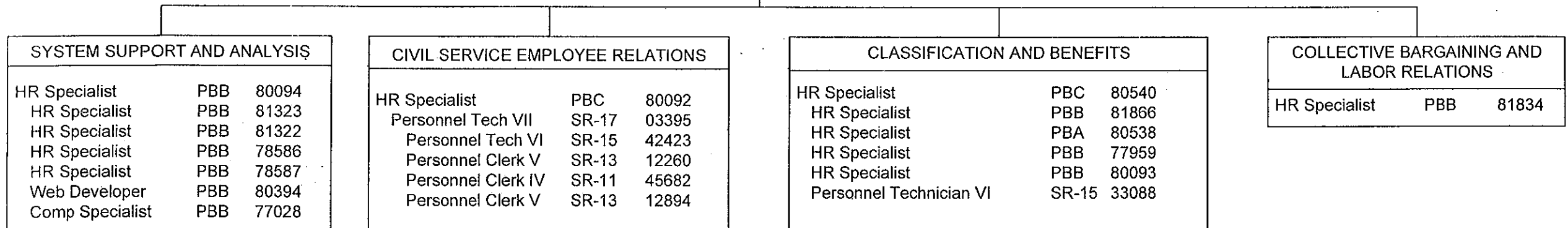
OFFICE OF THE EXECUTIVE VICE PRESIDENT FOR ACADEMIC AFFAIRS/ PROVOST		
Executive Vice President for Academic Affairs/Provost		89051 <sup>1</sup>

OFFICE OF HUMAN RESOURCES		
System Director of Human Resources		89425
Associate Director of Human Resources		89310
Secretary III	SR-16	15286

STATE OF HAWAII  
UNIVERSITY OF HAWAII  
SYSTEMWIDE ADMINISTRATION  
EXECUTIVE VICE PRESIDENT FOR  
ACADEMIC AFFAIRS/PROVOST  
OFFICE OF HUMAN RESOURCES

POSITION ORGANIZATION CHART

CHART I



<sup>1</sup> Excluded from position count

CHART UPDATED  
DATE JUL 01 2011