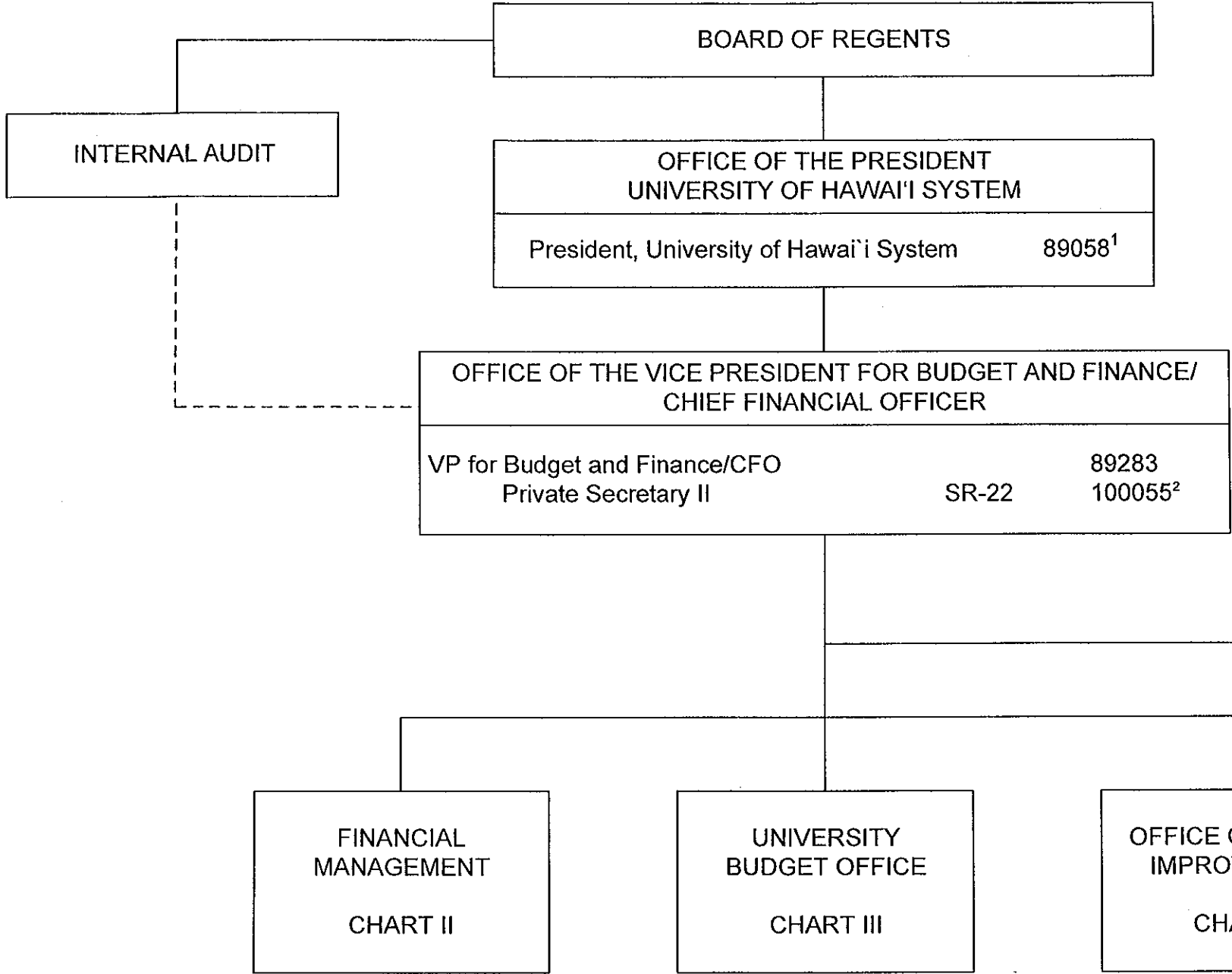


STATE OF HAWAI'I
UNIVERSITY OF HAWAI'I
SYSTEMWIDE ADMINISTRATION
VICE PRESIDENT FOR
BUDGET AND FINANCE/
CHIEF FINANCIAL OFFICER

POSITION ORGANIZATION CHART

CHART I



¹ Excluded from position count

² To be redescribed

³ Position 78673 in System Administrative Services abolished;
pending reestablishment

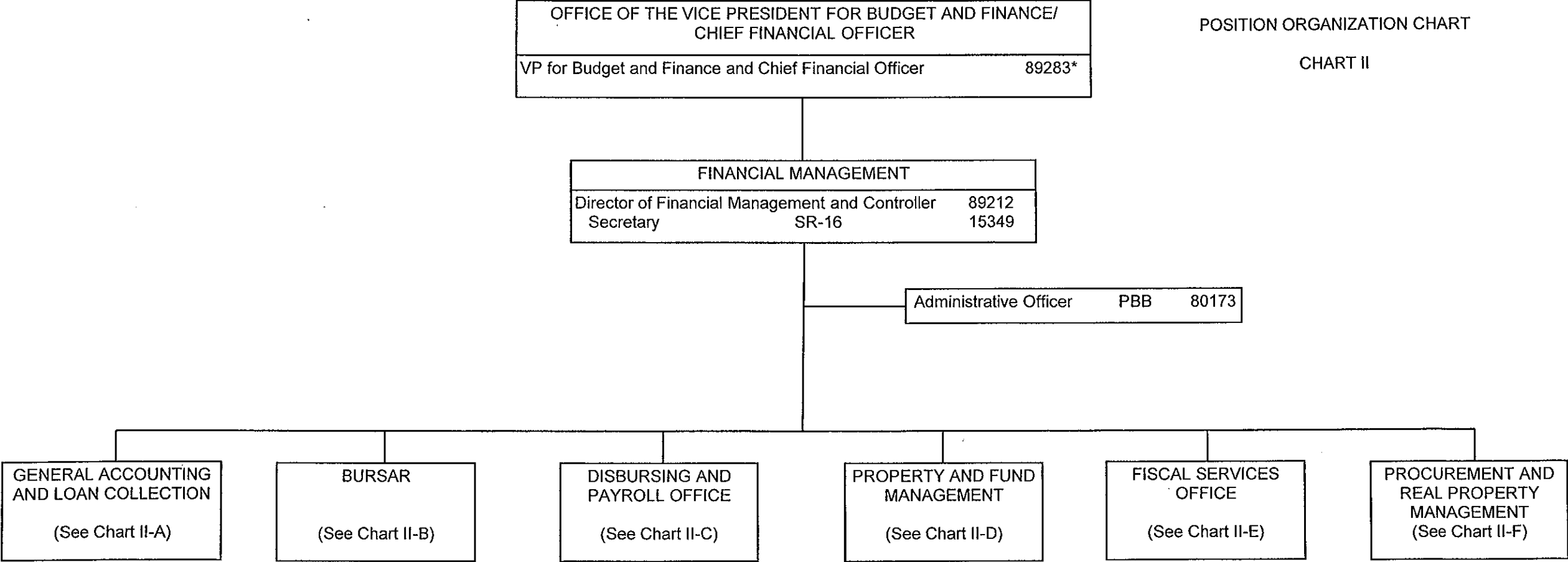
CHART UPDATED
DATE JUL 01 2011

Perm
General Funds 7.00

STATE OF HAWAII
UNIVERSITY OF HAWAII
SYSTEMWIDE ADMINISTRATION
VICE PRESIDENT FOR
BUDGET AND FINANCE/
CHIEF FINANCIAL OFFICER
FINANCIAL MANAGEMENT

POSITION ORGANIZATION CHART

CHART II



* Excluded from position count, this page

CHART UPDATED
DATE JUL 01 2011

STATE OF HAWAII
UNIVERSITY OF HAWAII
SYSTEMWIDE ADMINISTRATION
VICE PRESIDENT FOR
BUDGET AND FINANCE/
CHIEF FINANCIAL OFFICER
FINANCIAL MANAGEMENT
GENERAL ACCOUNTING AND LOAN
COLLECTION

POSITION ORGANIZATION CHART

CHART II-A

FINANCIAL MANAGEMENT	
Director of Financial Management and Controller	89212*

GENERAL ACCOUNTING AND LOAN COLLECTION (GALC)		
Director of GALC	PBD	78557
Fiscal Accounting Sp	PBC	80150
Fiscal Accounting Sp	PBB	78554
Fiscal Accounting Sp	PBB	78555
Fiscal Accounting Sp	PBB	78556
Fiscal Accounting Sp	PBB	80349
Fiscal Accounting Sp	PBB	80549
Fiscal Accounting Sp	PBB	81409
Fiscal Accounting Sp	PBB	80346
Fiscal Accounting Sp	PBB	81370
Fiscal Accounting Sp	PBB	81862(N)
Administrative Officer	PBB	80205(N)
Fiscal Accounting Sp	PBB	80888
Fiscal Accounting Sp	PBB	80347
Fiscal Accounting Sp	PBB	80141
Fiscal Accounting Sp	PBB	81407
Fiscal Accounting Sp	PBB	77296
Administrative Officer	PBB	81978
Administrative Officer	PBA	81814(N)
Administrative Officer	PBA	80333(N)
Administrative Officer	PBA	80842(N)
Administrative Officer	PBA	80856(N)
Administrative Officer	PBA	81962(N)
Administrative Officer	PBA	81479(N)

CHART UPDATED

DATE JUL 01 2011

Perm
General Funds 16.00
Federal Funds (N) 8.00 **

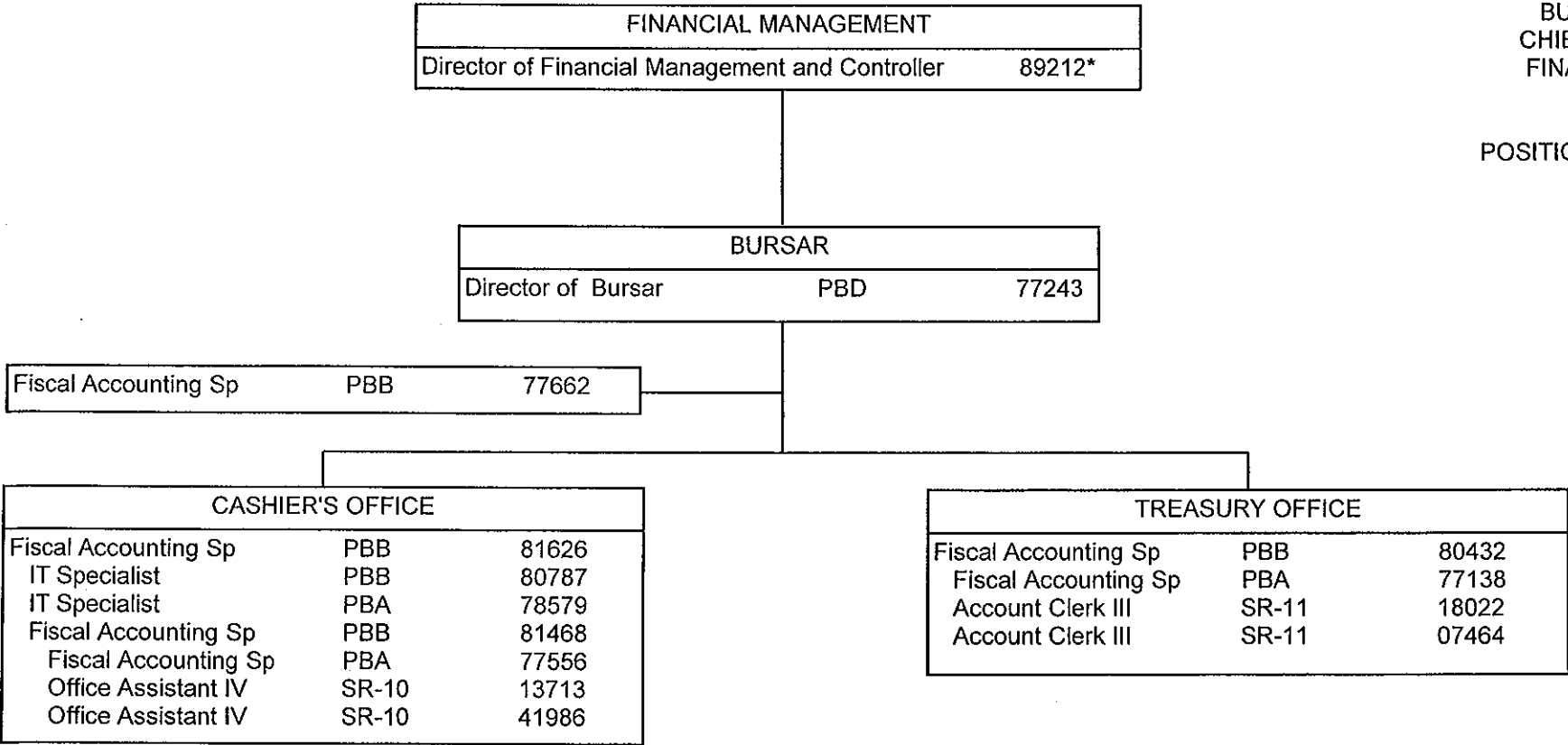
* Excluded from position count, this page

** Positions appropriated to Manoa, reflected organizationally on this chart

STATE OF HAWAII
UNIVERSITY OF HAWAII
SYSTEMWIDE ADMINISTRATION
VICE PRESIDENT FOR
BUDGET AND FINANCE/
CHIEF FINANCIAL OFFICER
FINANCIAL MANAGEMENT
BURSAR

POSITION ORGANIZATION CHART

CHART II-B

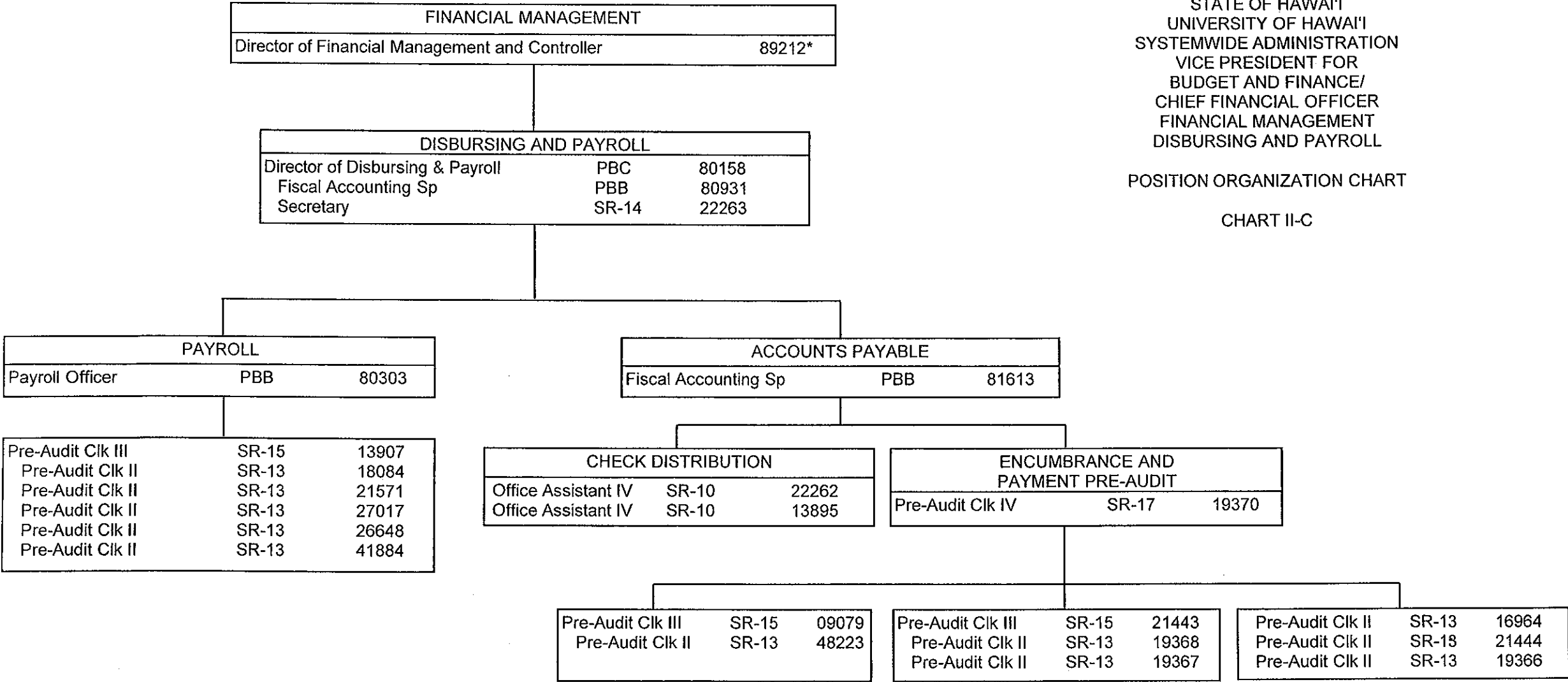


* Excluded from position count, this page

CHART UPDATED
DATE JUL 01 2011

STATE OF HAWAII
UNIVERSITY OF HAWAII
SYSTEMWIDE ADMINISTRATION
VICE PRESIDENT FOR
BUDGET AND FINANCE/
CHIEF FINANCIAL OFFICER
FINANCIAL MANAGEMENT
DISBURSING AND PAYROLL

POSITION ORGANIZATION CHART
CHART II-C



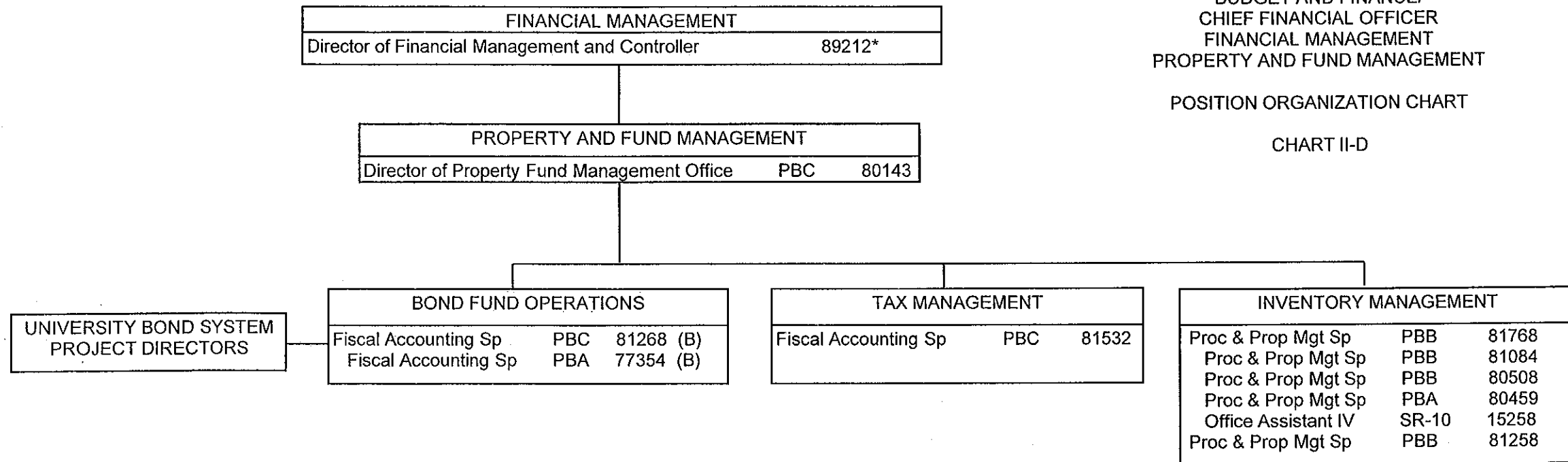
* Excluded from position count, this page

CHART UPDATED
DATE JUL 01 2011

STATE OF HAWAII
 UNIVERSITY OF HAWAII
 SYSTEMWIDE ADMINISTRATION
 VICE PRESIDENT FOR
 BUDGET AND FINANCE/
 CHIEF FINANCIAL OFFICER
 FINANCIAL MANAGEMENT
 PROPERTY AND FUND MANAGEMENT

POSITION ORGANIZATION CHART

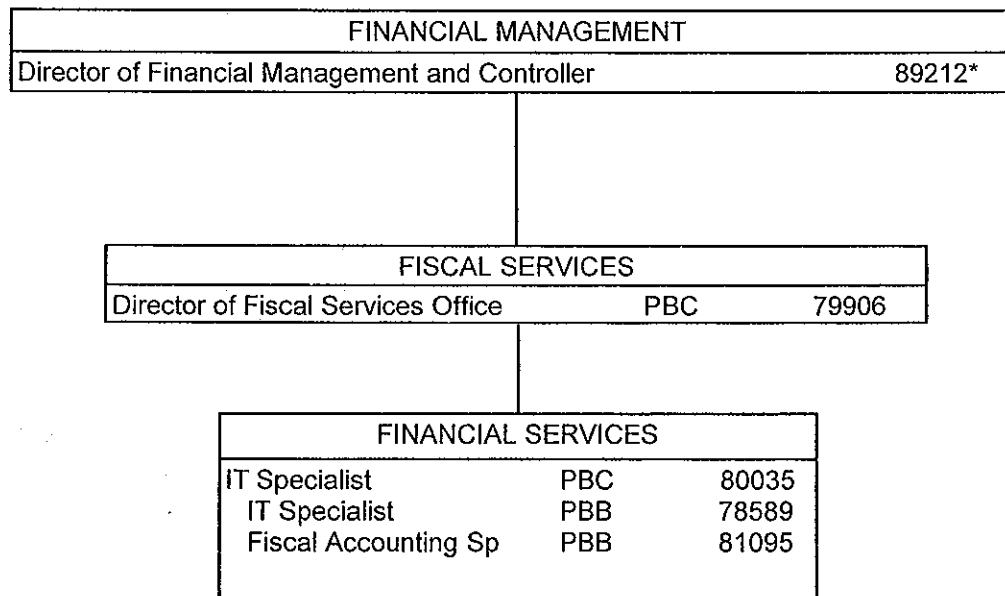
CHART II-D



* Excluded from position count, this page
 Position appropriated but not established: 98963F (0.50)

CHART UPDATED
 DATE JUL 01 2011

Perm
 General Funds 8.50
 (B) Special Funds 2.00



STATE OF HAWAII
UNIVERSITY OF HAWAII
SYSTEMWIDE ADMINISTRATION
VICE PRESIDENT FOR
BUDGET AND FINANCE/
CHIEF FINANCIAL OFFICER
FINANCIAL MANAGEMENT
FISCAL SERVICES

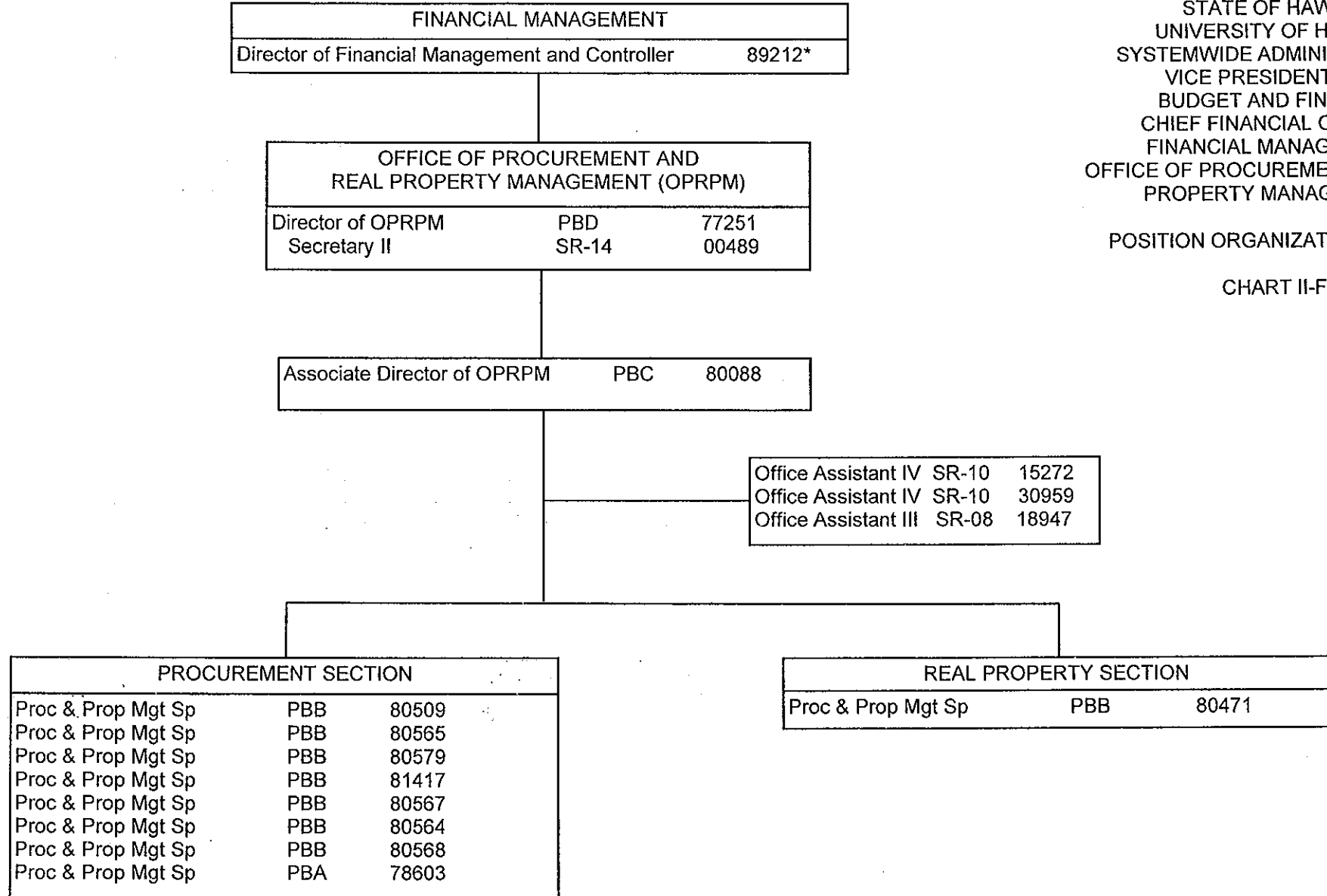
POSITION ORGANIZATION CHART

CHART II-E

* Excluded from position count, this page

CHART UPDATED
DATE JUL 01 2011

General Funds 4.00 Perm



STATE OF HAWAII
UNIVERSITY OF HAWAII
SYSTEMWIDE ADMINISTRATION
VICE PRESIDENT FOR
BUDGET AND FINANCE/
CHIEF FINANCIAL OFFICER
FINANCIAL MANAGEMENT
OFFICE OF PROCUREMENT AND REAL
PROPERTY MANAGEMENT

POSITION ORGANIZATION CHART

CHART II-F

* Excluded from position count, this page
Position appropriated but not established: 99953F

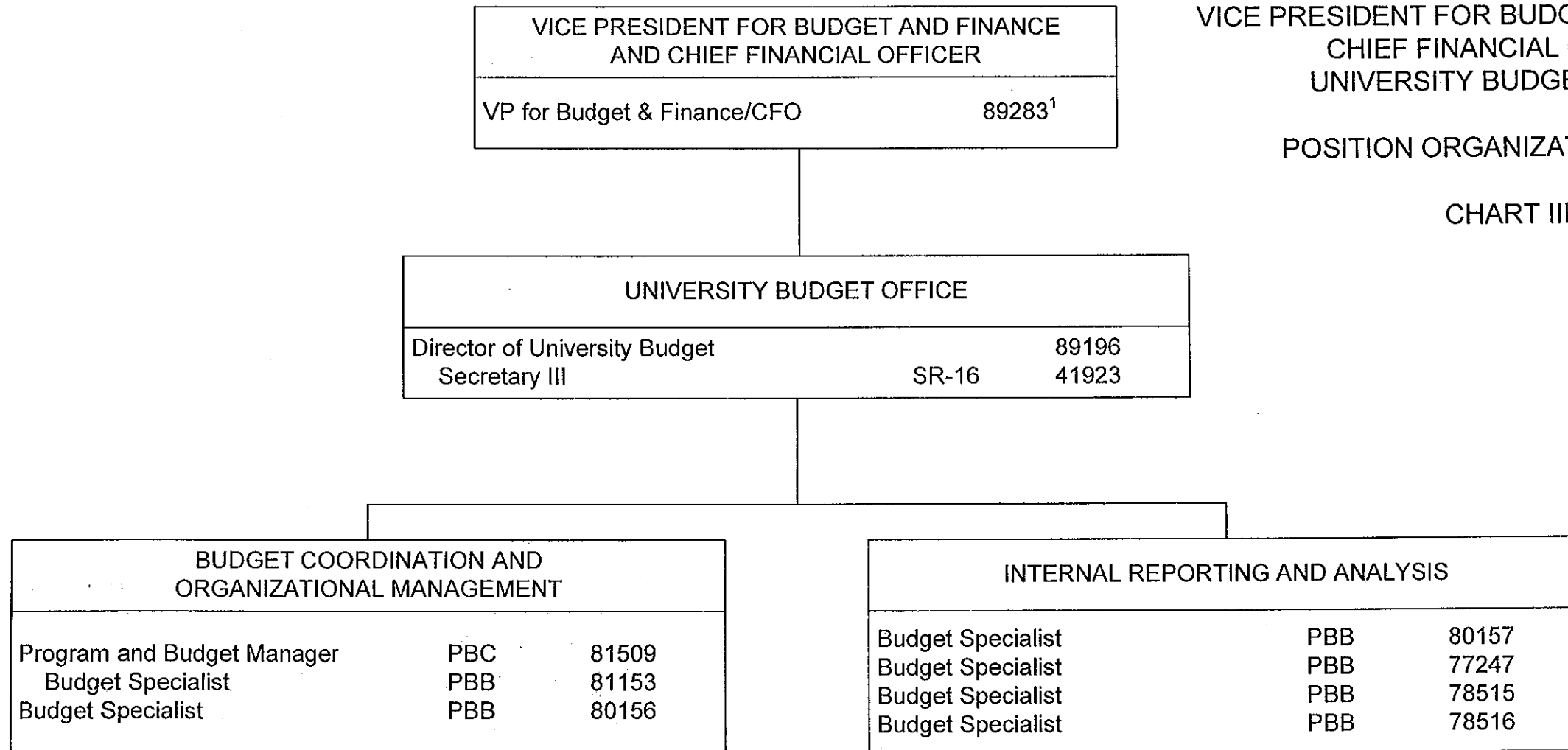
CHART UPDATED
DATE JUL 01 2011

General Funds 16.00 ^{Perm}

STATE OF HAWAI'I
 UNIVERSITY OF HAWAI'I
 SYSTEMWIDE ADMINISTRATION
 VICE PRESIDENT FOR BUDGET AND FINANCE/
 CHIEF FINANCIAL OFFICER
 UNIVERSITY BUDGET OFFICE

POSITION ORGANIZATION CHART

CHART III



¹ Excluded from position count

CHART UPDATED
 DATE JUL 01 2011

OFFICE OF THE VICE PRESIDENT FOR BUDGET & FINANCE/ CHIEF FINANCIAL OFFICER		
Vice President for Budget and Finance/CFO		89283 ¹

OFFICE OF CAPITAL IMPROVEMENTS		
Associate Vice President for Capital Improvements		89233
Secretary IV	SR-18	100033

STATE OF HAWAI'I

UNIVERSITY OF HAWAI'I

SYSTEMWIDE ADMINISTRATION

VICE PRESIDENT FOR BUDGET AND

FINANCE/CHIEF FINANCIAL OFFICER

OFFICE OF CAPITAL IMPROVEMENTS

POSITION ORGANIZATION CHART

CHART IV

PHYSICAL PLANNING AND PROJECT MANAGEMENT – DESIGN AND CONSTRUCTION		
Registered Architect	PBC	77086
Facilities Planner	PBB	77235
Registered Architect	PBB	78691
Secretary ²		
Secretary ²		
Engineer ²		
Facilities Planner ²		

ADMINISTRATION & SUPPORT SERVICES		
Administrative Officer	PBC	81056
Capital Improvement Prg Off	PBB	80153
Secretary ²		
Fiscal Accounting Sp ²		
Proc & Prop Mgt Sp ²		
Engineer ²		
Administrative Off ²		
Administrative Off ²		
IT Specialist ²		

¹ Excluded from position count

² To be created via reassigned position within the University and/or to be requested

	<u>Perm</u>
General Fund	7.00
General Fund	11.00 (to be reassigned/requested)