

STATE OF HAWAII
UNIVERSITY OF HAWAII
SYSTEMWIDE ADMINISTRATION
VICE PRESIDENT FOR
COMMUNITY COLLEGES

POSITION ORGANIZATION CHART

CHART I

^Excluded from position count

CHART UPDATED

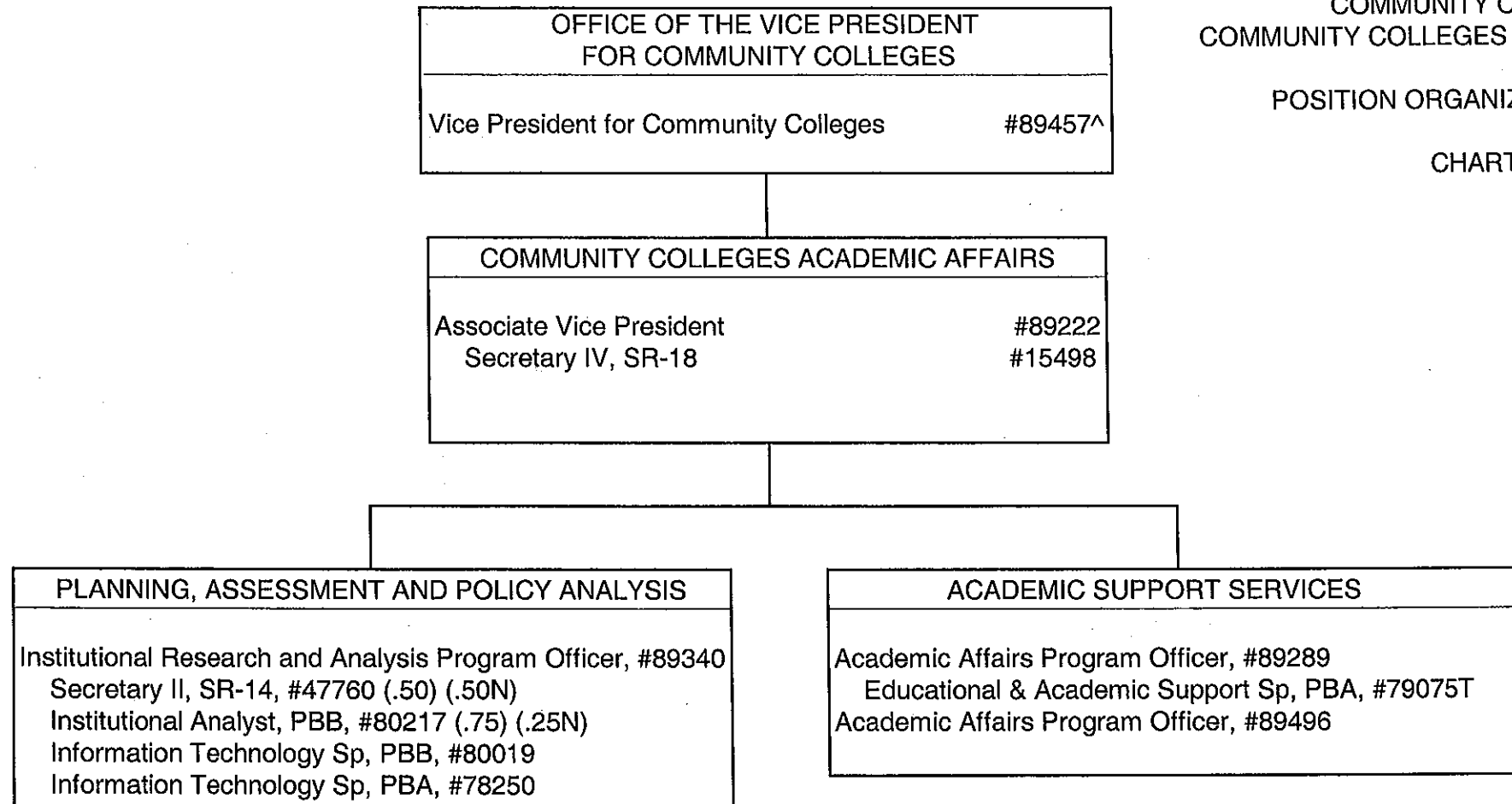
DATE JUL 01 2011

GENERAL FUND PERM 4.00

STATE OF HAWAII
 UNIVERSITY OF HAWAII
 SYSTEMWIDE ADMINISTRATION
 VICE PRESIDENT FOR
 COMMUNITY COLLEGES
 COMMUNITY COLLEGES ACADEMIC AFFAIRS

POSITION ORGANIZATION CHART

CHART II



^Excluded from position count

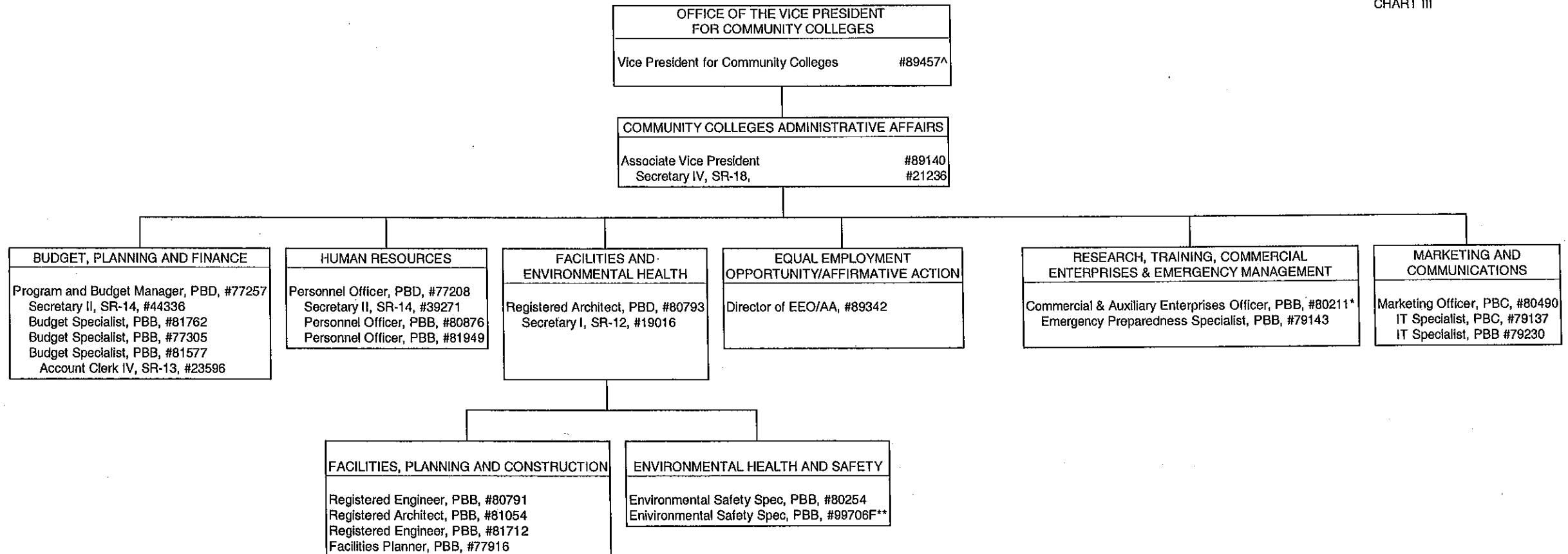
CHART UPDATED
 DATE JUL 01 2011

	PERM	TEMP
GENERAL FUND	8.25	1.00
FEDERAL FUNDS	0.75	

STATE OF HAWAII
UNIVERSITY OF HAWAII
SYSTEMWIDE ADMINISTRATION
VICE PRESIDENT FOR
COMMUNITY COLLEGES
COMMUNITY COLLEGES ADMINISTRATIVE AFFAIRS

POSITION ORGANIZATION CHART

CHART III



^ Excluded from position count

* Position to be redescribed

** Position to be established

CHART UPDATED

DATE JUL 01 2011

GENERAL FUND PERM 26.00