

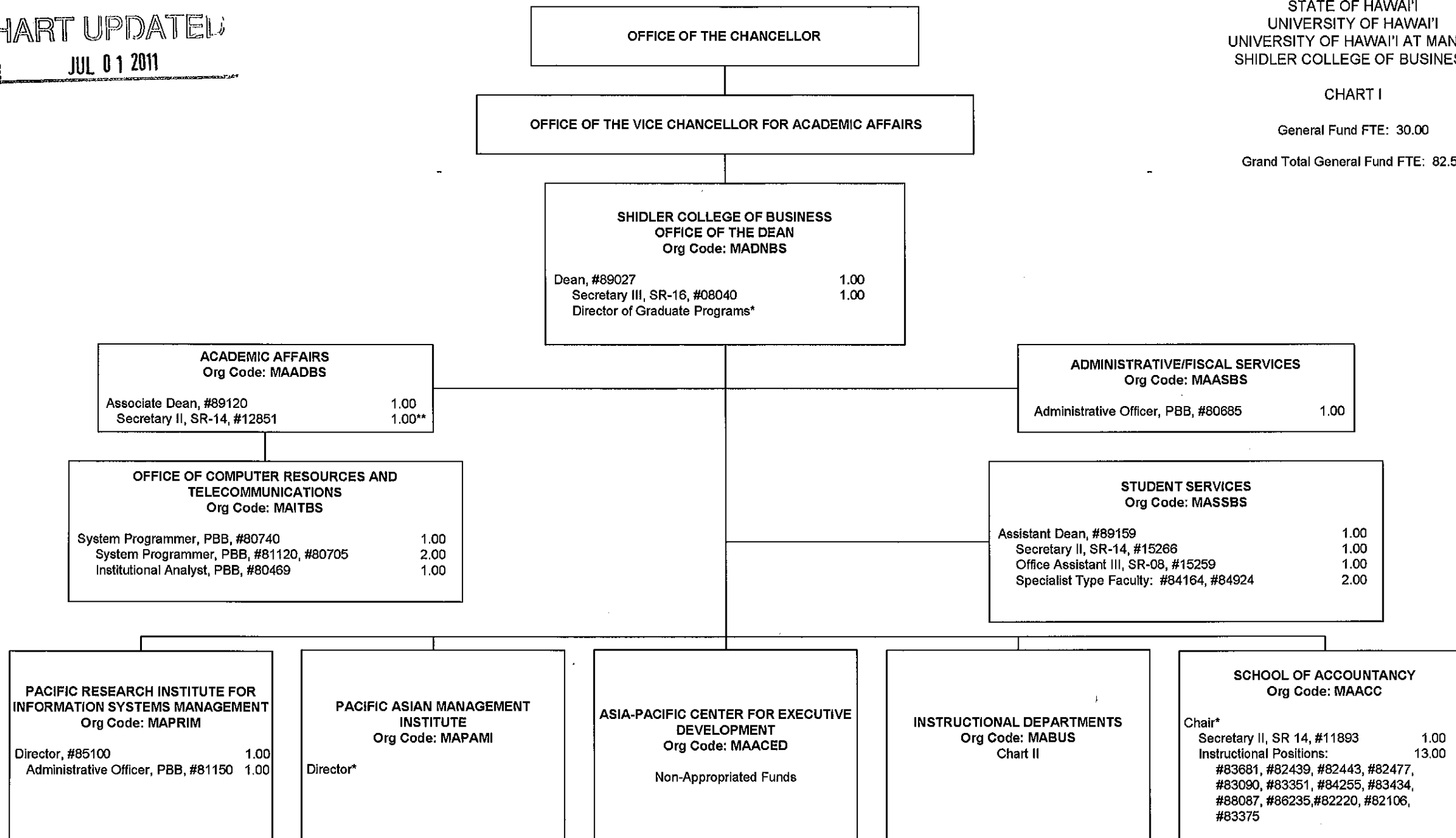
CHART UPDATED
DATE JUL 01 2011

STATE OF HAWAII
UNIVERSITY OF HAWAII
UNIVERSITY OF HAWAII AT MANOA
SHIDLER COLLEGE OF BUSINESS

CHART I

General Fund FTE: 30.00

Grand Total General Fund FTE: 82.50



* Appointed from Instructional Position.
** Abolished

CHART II

General Fund FTE: 52.50

OFFICE OF THE DEAN

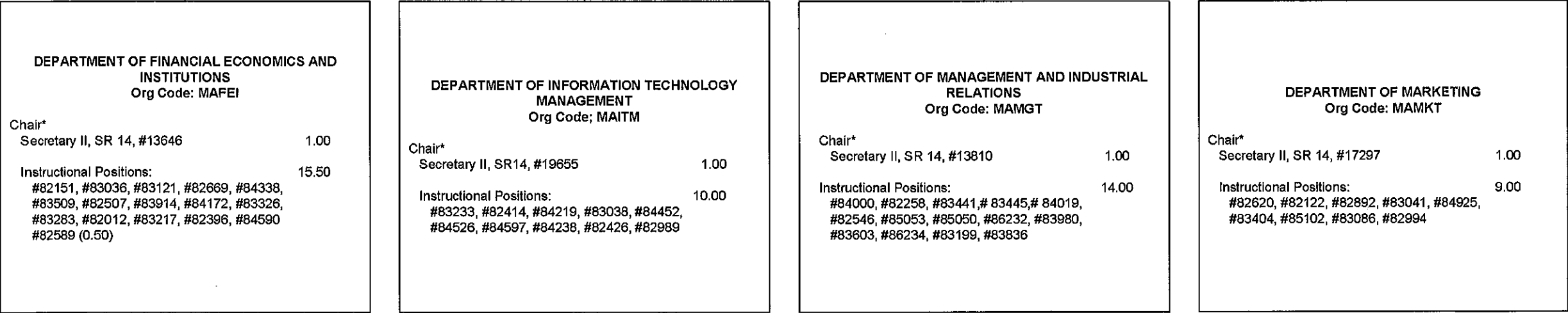


CHART UPDATED
DATE JUL 01 2011

*Appointed from Instructional Position.