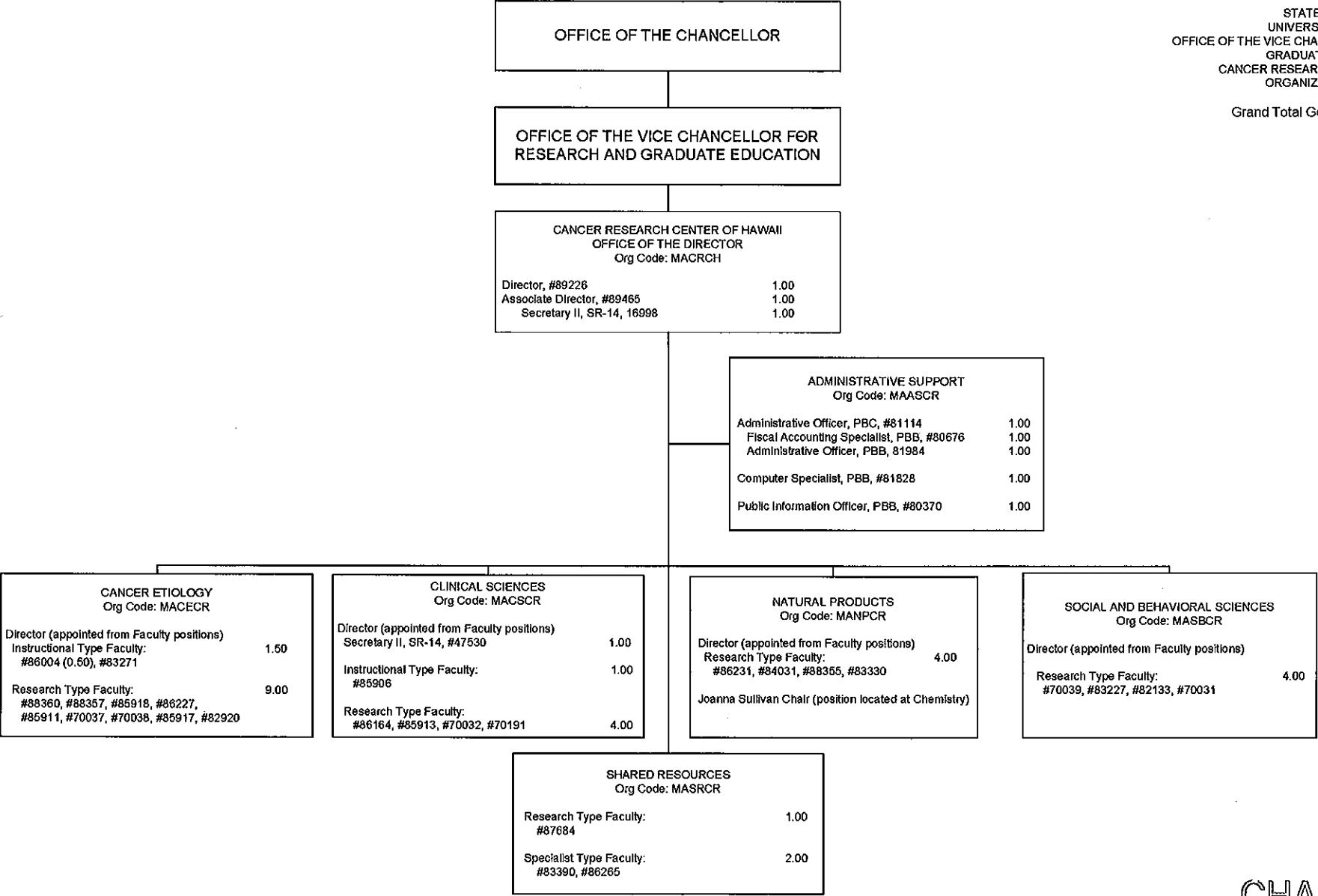


STATE OF HAWAII
UNIVERSITY OF HAWAII
OFFICE OF THE VICE CHANCELLOR FOR RESEARCH AND
GRADUATE EDUCATION
CANCER RESEARCH CENTER OF HAWAII
ORGANIZATION CHART I

Grand Total General Funds: 39.50



*Reallocated to CRCH FY 2010: #70201, #70203, #70204, #70209

CHART UPDATED
DATE JUL 01 2011