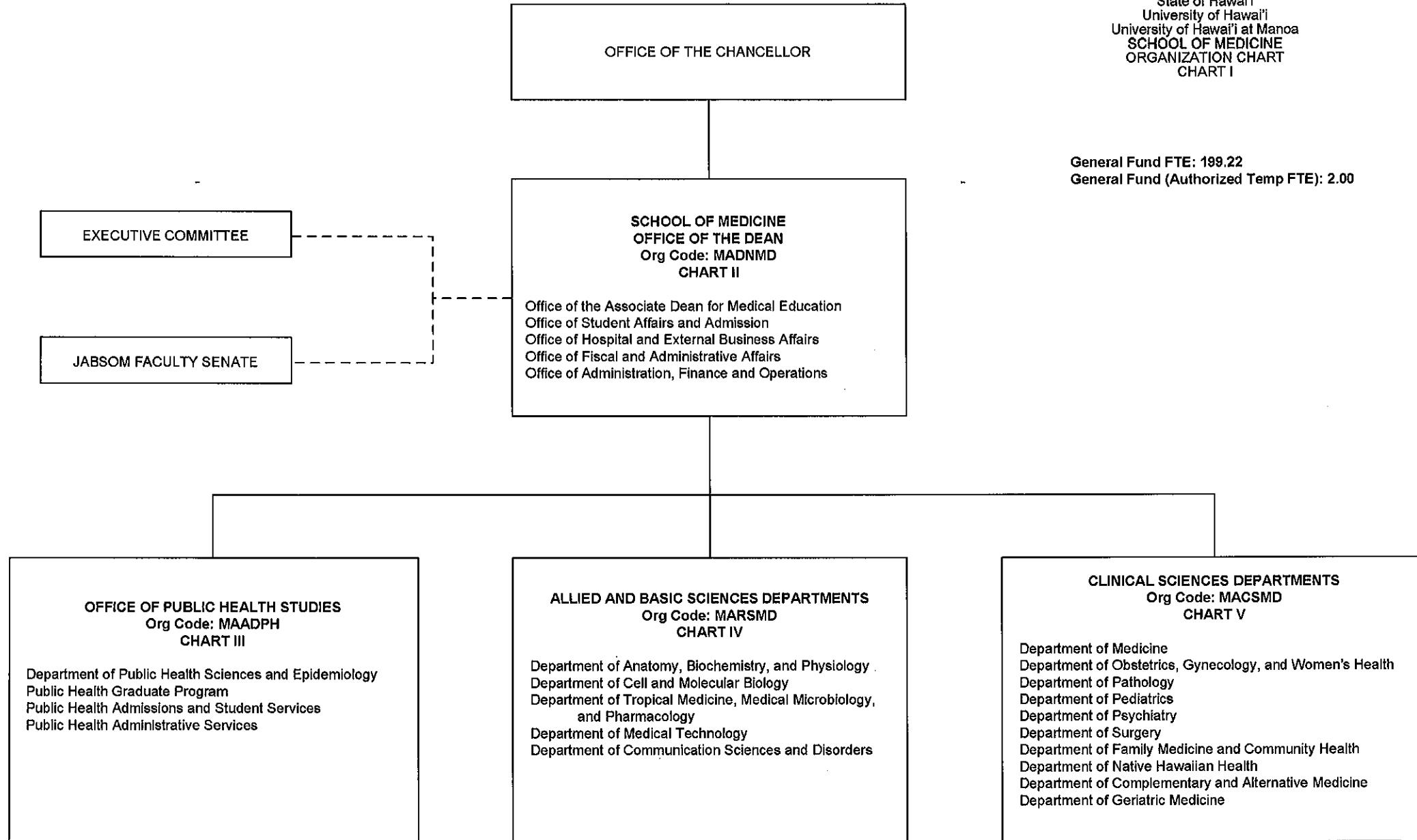


State of Hawai'i  
University of Hawai'i  
University of Hawai'i at Manoa  
**SCHOOL OF MEDICINE**  
ORGANIZATION CHART  
CHART I

General Fund FTE: 199.22  
General Fund (Authorized Temp FTE): 2.00



**CHART UPDATED**  
DATE JUL 01 2011

State of Hawai'i  
University of Hawai'i  
University of Hawai'i at Manoa  
SCHOOL OF MEDICINE  
OFFICE OF THE DEAN  
ORGANIZATION CHART  
CHART II

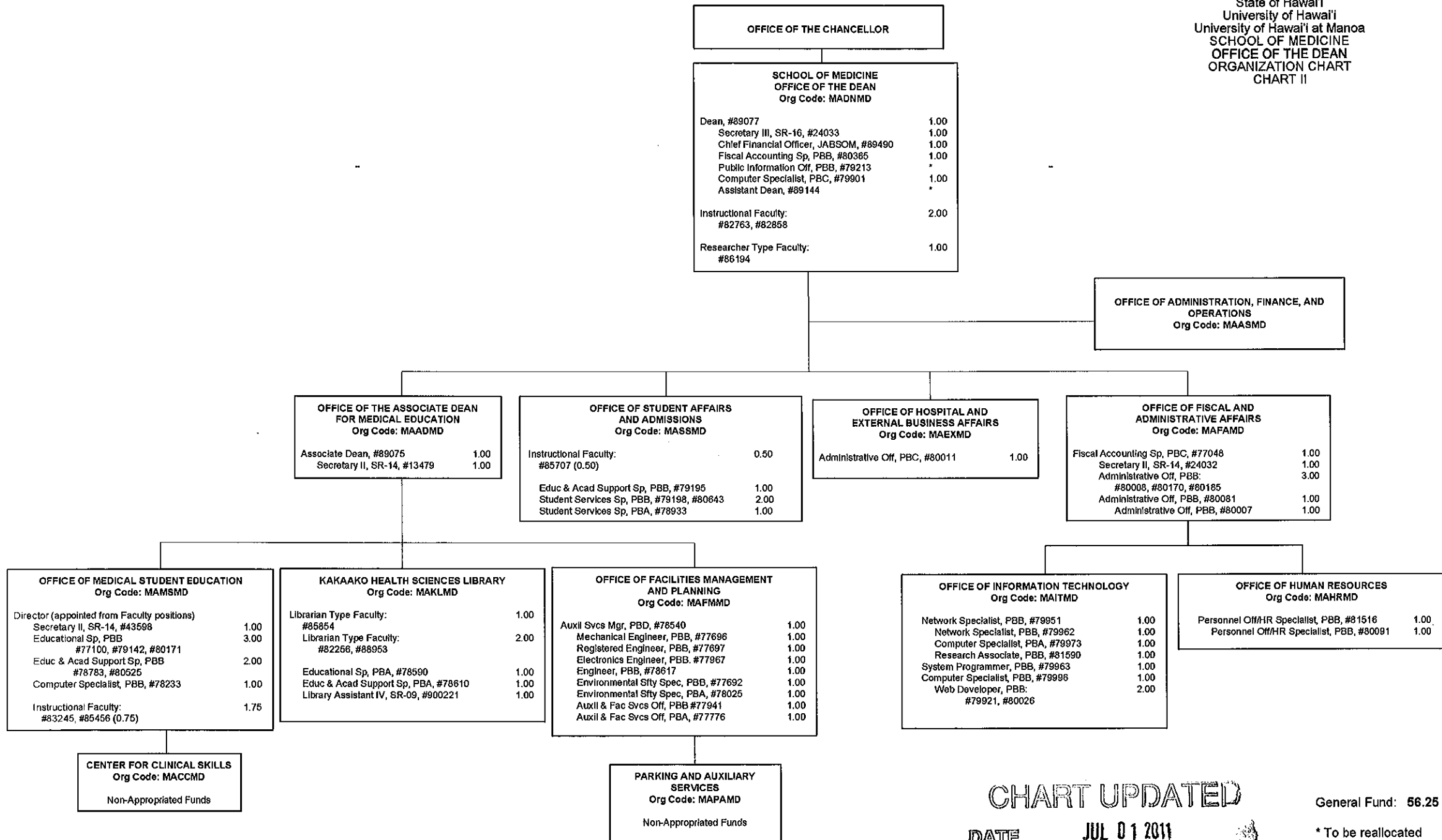


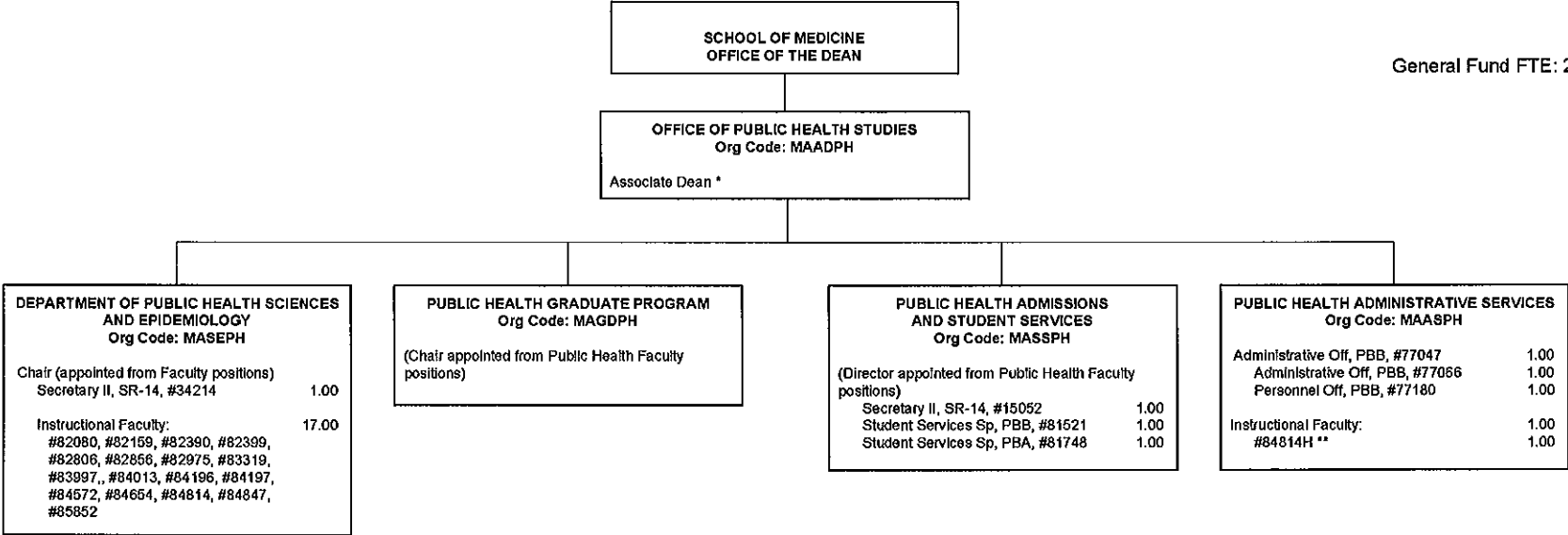
CHART UPDATED  
DATE JUL 01 2011

General Fund: 56.25

\* To be reallocated

State of Hawai'i  
University of Hawai'i  
University of Hawai'i at Manoa  
SCHOOL OF MEDICINE  
OFFICE OF PUBLIC HEALTH STUDIES  
ORGANIZATION CHART  
CHART III

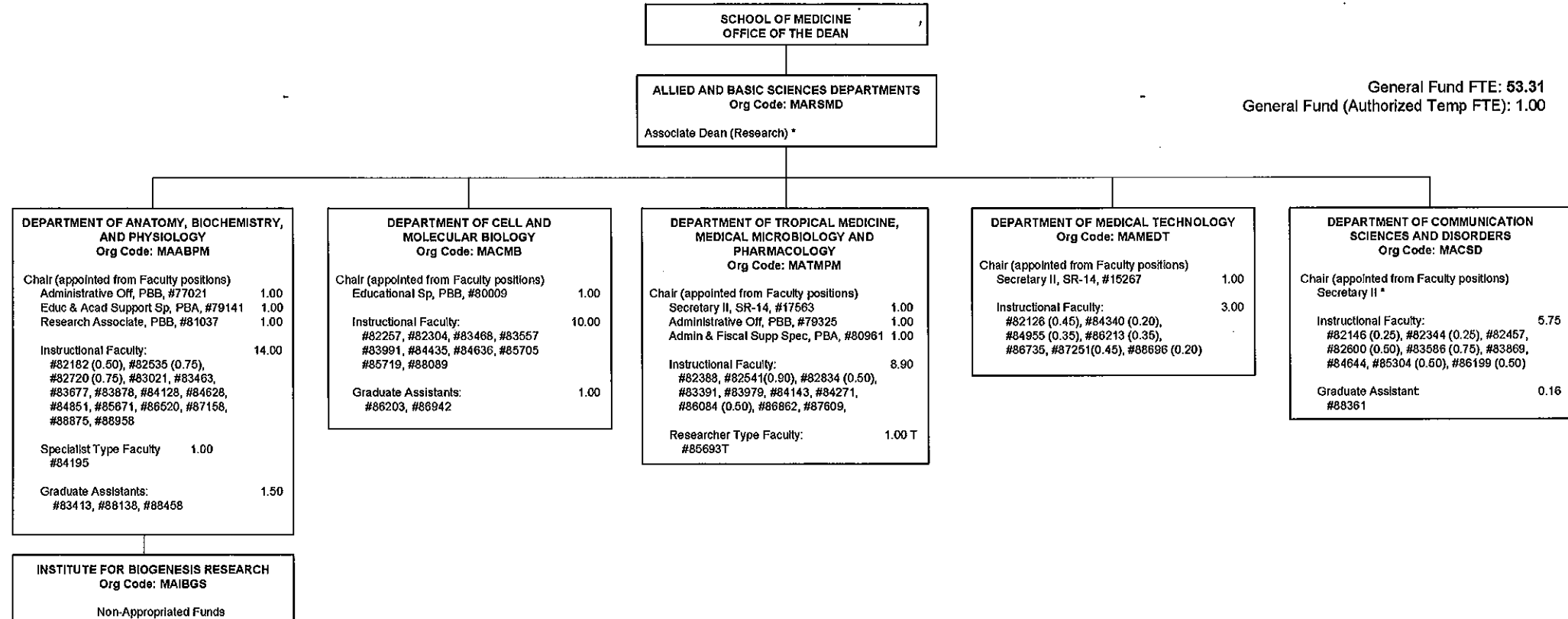
General Fund FTE: 25.00



\* To be established  
\*\* To be renumbered

CHART UPDATED  
DATE JUL 01 2011

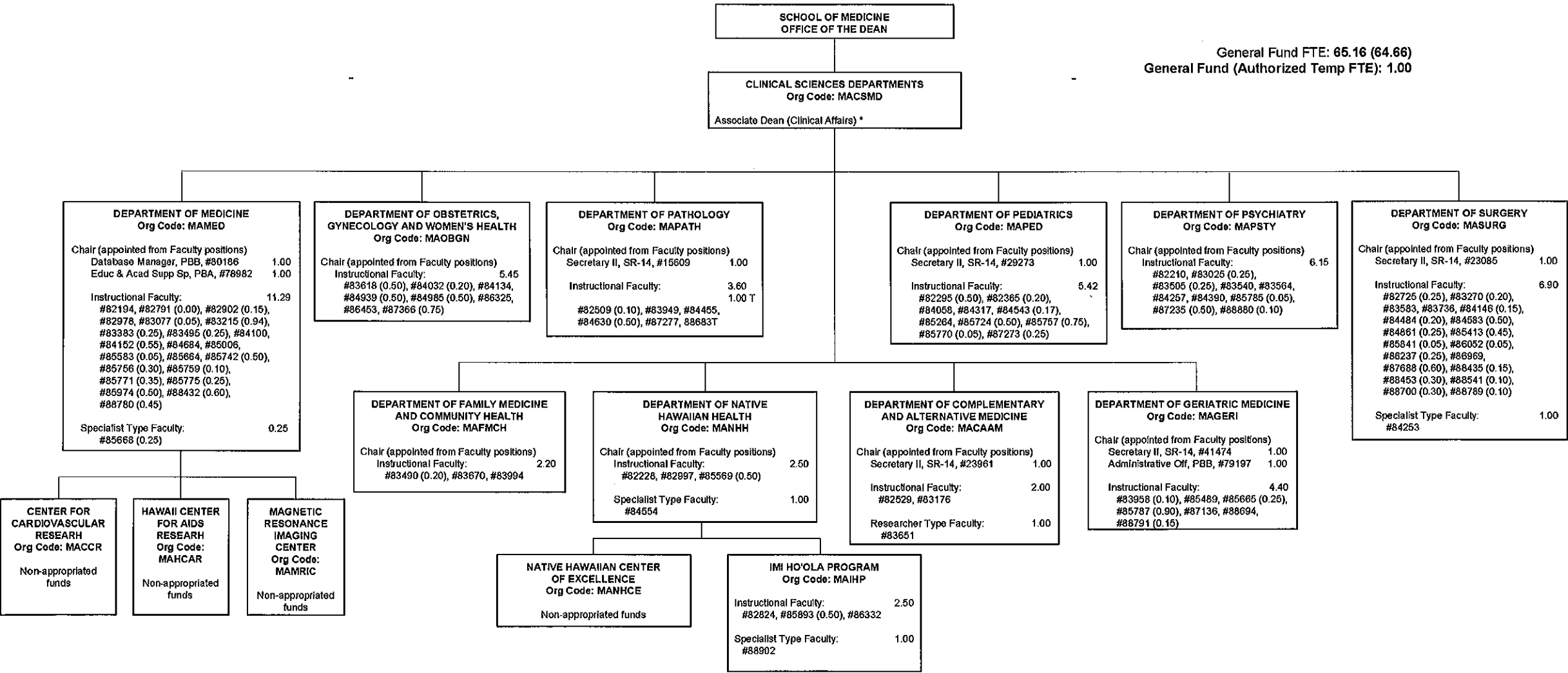
State of Hawai'i  
University of Hawai'i  
University of Hawai'i at Manoa  
SCHOOL OF MEDICINE  
ALLIED AND BASIC SCIENCES DEPARTMENTS  
ORGANIZATION CHART  
CHART IV



\* To be established

CHART UPDATED  
DATE JUL 01 2011

State of Hawai'i  
University of Hawai'i  
University of Hawai'i at Manoa  
SCHOOL OF MEDICINE  
CLINICAL SCIENCES DEPARTMENTS  
ORGANIZATION CHART  
CHART V



General Fund FTE: 65.16 (64.66)  
General Fund (Authorized Temp FTE): 1.00

\* To be established