

\*Appropriated Temporary Positions

CHART UPDATED  
DATE JUL 01 2011

OFFICE OF THE DEAN

DEPARTMENT OF BIOLOGY  
Org Code: MABIOL

Chair (Appointed from Faculty Positions)	
Secretary II, SR-14, #11894	1.00
Office Assistant III, SR-08, #15271	1.00
Administrative Officer, PBA, #81425	1.00
Admin & Fiscal Support Spec, PBA, #80681	1.00
Educational Specialist, PBB:	3.00
#77383, #80637, #81177	
Educational Specialist, PBA:	1.00
#79023	
Instructional Faculty:	18.00
#82015, #82167, #82243, #82269,	
#82424, #82434, #83079, #83141,	
#83232, #83948, #84144, #84162,	
#84248, #84378, #84472, #85803,	
#88135, #88993,	
Graduate Assistants:	15.00
#83905, #85031, #85524, #88014,	3.50 (T)
#88016, #88021, #88068, #88070,	
#88081, #88105, #88114, #88150,	
#88153, #88157, #88161, #88162,	
#88275, #88302, #88312, #88321,	
#88337, #88354, #88387, #88394,	
#88442, #88447, #88461, #88472,	
#88516, #88599, #83828T*, #83834T*,	
#84249T*, #84341T*, #84453T*, #86064T*,	
#87056T*	

Hawai'i Cooperative Fishery Research Unit  
Org Code: MACFZO

Marine Option Program  
Org Code: MAMOP

State of Hawai'i  
University of Hawai'i  
University of Hawai'i at Mānoa  
COLLEGES OF ARTS AND SCIENCES  
COLLEGE OF NATURAL SCIENCES  
BIOLOGY PROGRAM  
POSITION ORGANIZATION CHART

CHART II-A

General Fund FTE: 41.00  
General Fund FTE: 3.50 (Auth Temp)

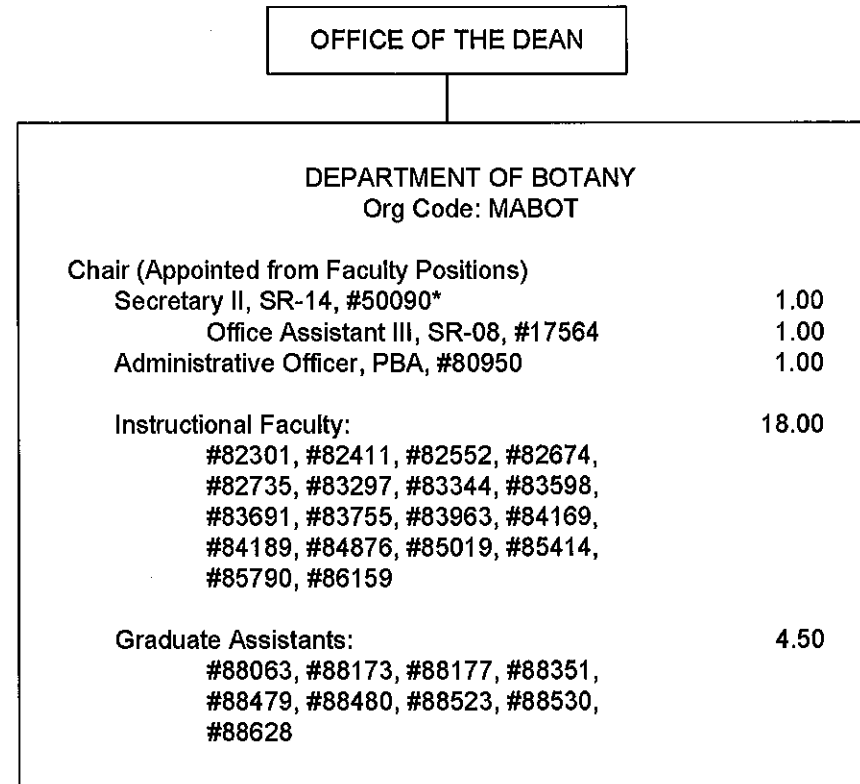
CHART UPDATED

DATE JUL 01 2011

\*Appropriated Temporary Positions

State of Hawai'i  
University of Hawai'i  
University of Hawai'i at Mānoa  
COLLEGES OF ARTS AND SCIENCES  
COLLEGE OF NATURAL SCIENCES  
DEPARTMENT OF BOTANY  
POSITION ORGANIZATION CHART

CHART II-B



General Fund FTE: 25.50

\*Position abolished, pending reestablishment

CHART UPDATED  
DATE JUL 01 2011

State of Hawai'i  
University of Hawai'i  
University of Hawai'i at Mānoa  
COLLEGES OF ARTS AND SCIENCES  
COLLEGE OF NATURAL SCIENCES  
DEPARTMENT OF CHEMISTRY  
POSITION ORGANIZATION CHART

CHART II-C

General Fund FTE: 44.00

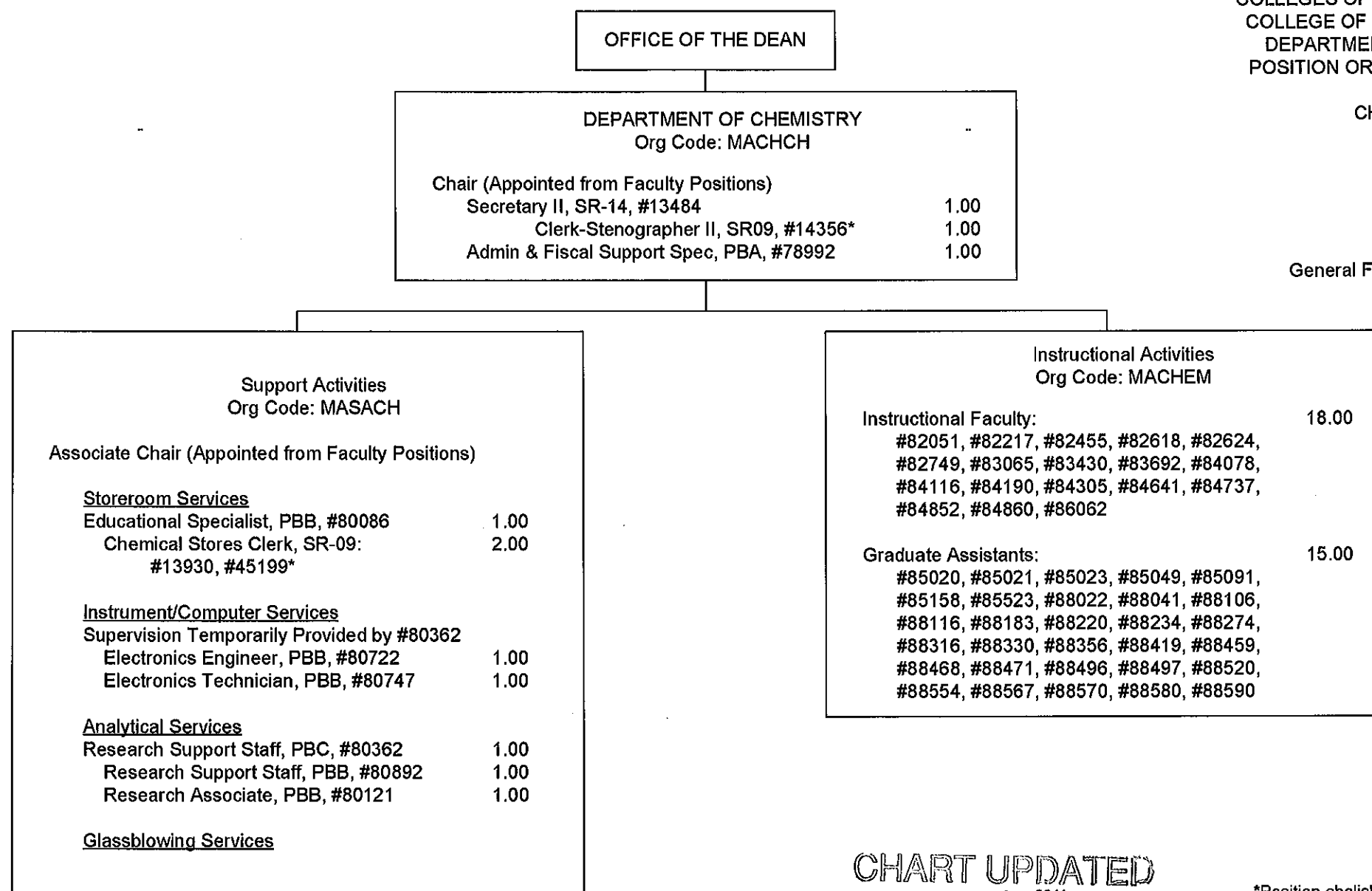
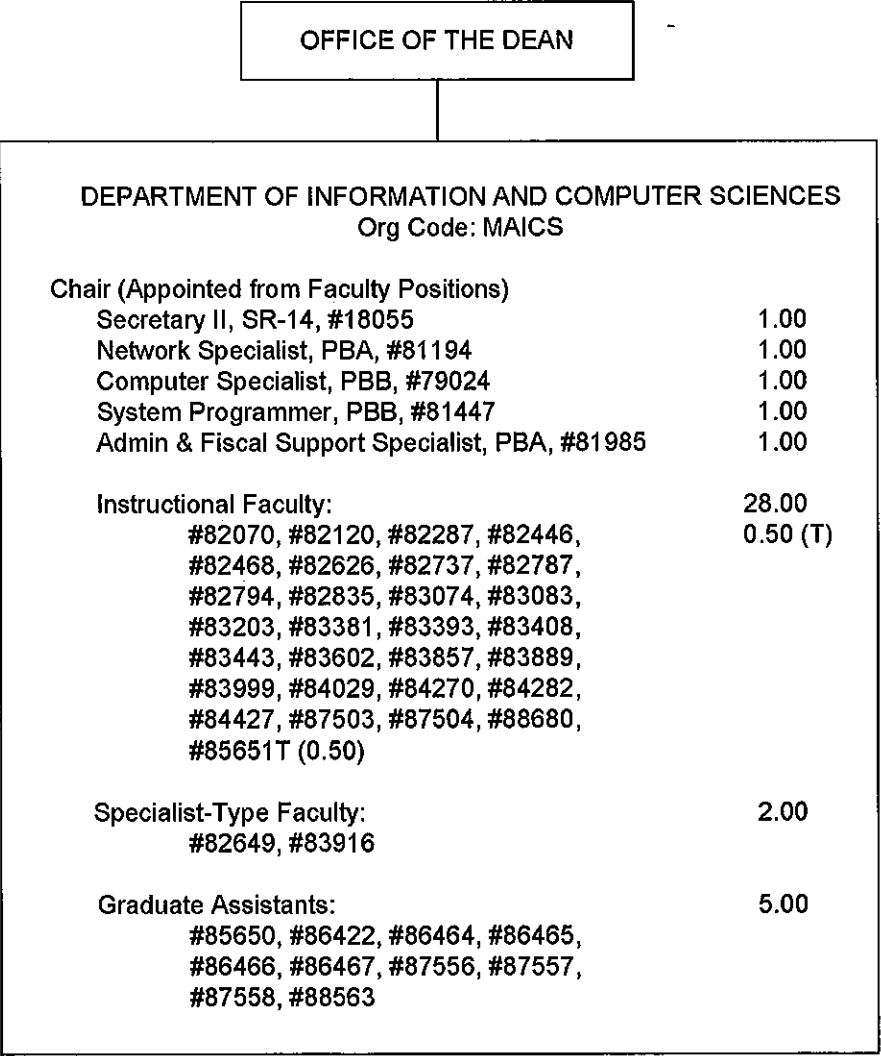


CHART UPDATED  
JUL 01 2011  
DATE

\*Position abolished, pending reestablishment

State of Hawai'i  
University of Hawai'i  
University of Hawai'i at Mānoa  
COLLEGES OF ARTS AND SCIENCES  
COLLEGE OF NATURAL SCIENCES  
DEPARTMENT OF INFORMATION  
AND COMPUTER SCIENCES  
POSITION ORGANIZATION CHART

CHART II-D



General Fund FTE: 40.00  
General Fund FTE: 0.50 (Auth Temp)

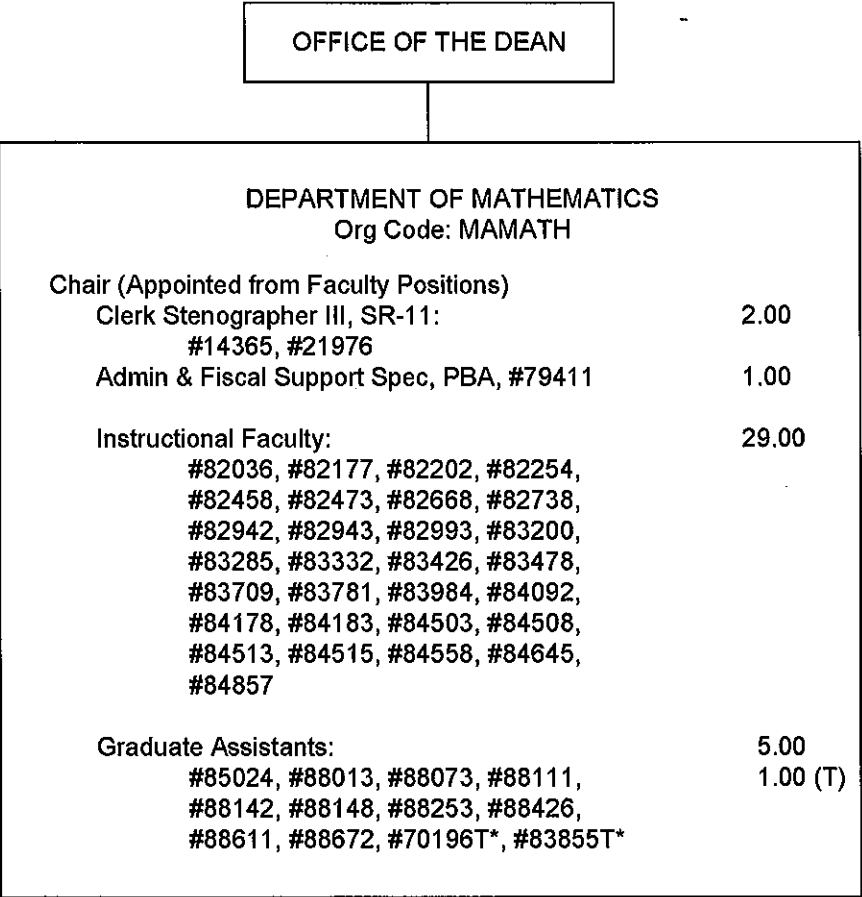
CHART UPDATED  
JUL 01 2011  
DATE

\*Appropriated Temporary Position

State of Hawai'i  
University of Hawai'i  
University of Hawai'i at Mānoa  
COLLEGES OF ARTS AND SCIENCES  
COLLEGE OF NATURAL SCIENCES  
DEPARTMENT OF MATHEMATICS  
POSITION ORGANIZATION CHART

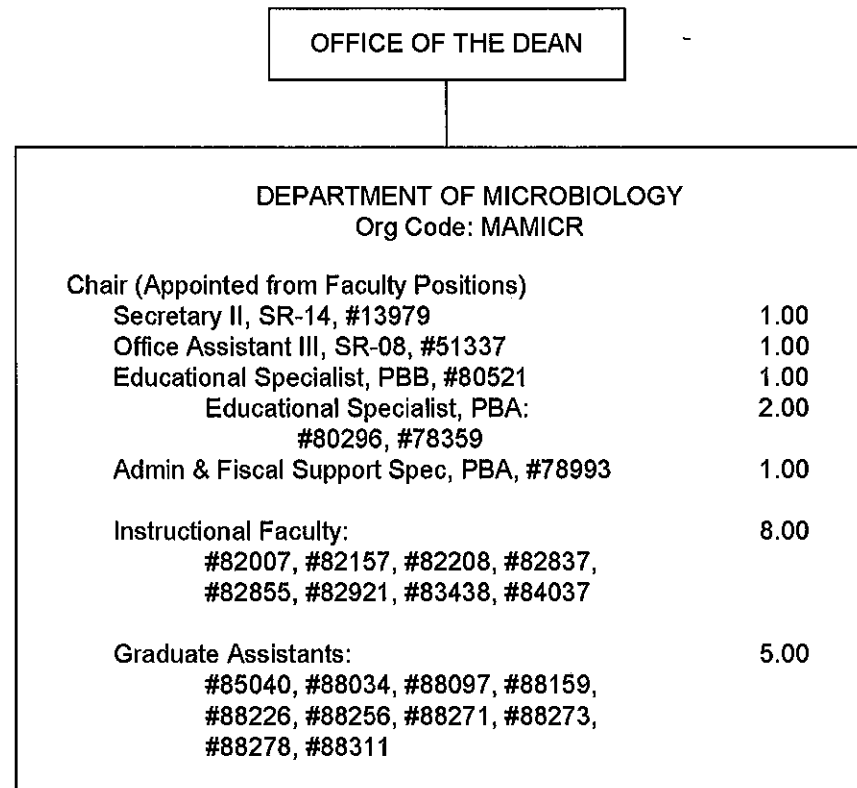
CHART II-E

General Fund FTE: 37.00  
General Fund FTE: 1.00 (Auth Temp)



State of Hawai'i  
University of Hawai'i  
University of Hawai'i at Mānoa  
COLLEGES OF ARTS AND SCIENCES  
COLLEGE OF NATURAL SCIENCES  
DEPARTMENT OF MICROBIOLOGY  
POSITION ORGANIZATION CHART

CHART II-F



General Fund FTE: 19.00

CHART UPDATED  
DATE JUL 01 2011

State of Hawai'i  
University of Hawai'i  
University of Hawai'i at Mānoa  
COLLEGES OF ARTS AND SCIENCES  
COLLEGE OF NATURAL SCIENCES  
DEPARTMENT OF PHYSICS AND ASTRONOMY  
POSITION ORGANIZATION CHART

CHART II-G

OFFICE OF THE DEAN

DEPARTMENT OF PHYSICS AND ASTRONOMY  
Org Code: MAPA

Chair (Appointed from Faculty Positions)

Secretary II, SR-14, #12918	1.00
Office Assistant III, SR-08, #14355	1.00
Scientific Instrument Technician, PBB, #80706	1.00
Scientific Instrument Technician, PBB, #80703	1.00

Instructional Faculty:

21.00

#82206, #82314, #82633, #82770,  
#82875, #83534, #83547, #83790,  
#83813, #83861, #83910, #83915,  
#83926, #84235, #84240, #84398,  
#84494, #84587, #84675, #88615,  
#84773

Graduate Assistants:

7.00

#85506, #88055, #88057, #88176,  
#88198, #88270, #88309, #88385,  
#88389, #88441, #88478, #88524,  
#88593, #88650, #70197T\*, #83844T\*,  
#83849T\*, #84184T\*

2.00 (T)

\*Appropriated Temporary Positions

General Fund FTE: 32.00  
General Fund FTE: 2.00 (Auth Temp)

CHART UPDATED

DATE JUL 01 2011