

Grand Total FTE by Fund: 207.75
General Funds (Auth Temp): 1.00



CHART UPDATED
JUL 01 2011
DATE _____

OFFICE OF THE DEAN
SCHOOL OF OCEAN AND EARTH
SCIENCE AND TECHNOLOGY

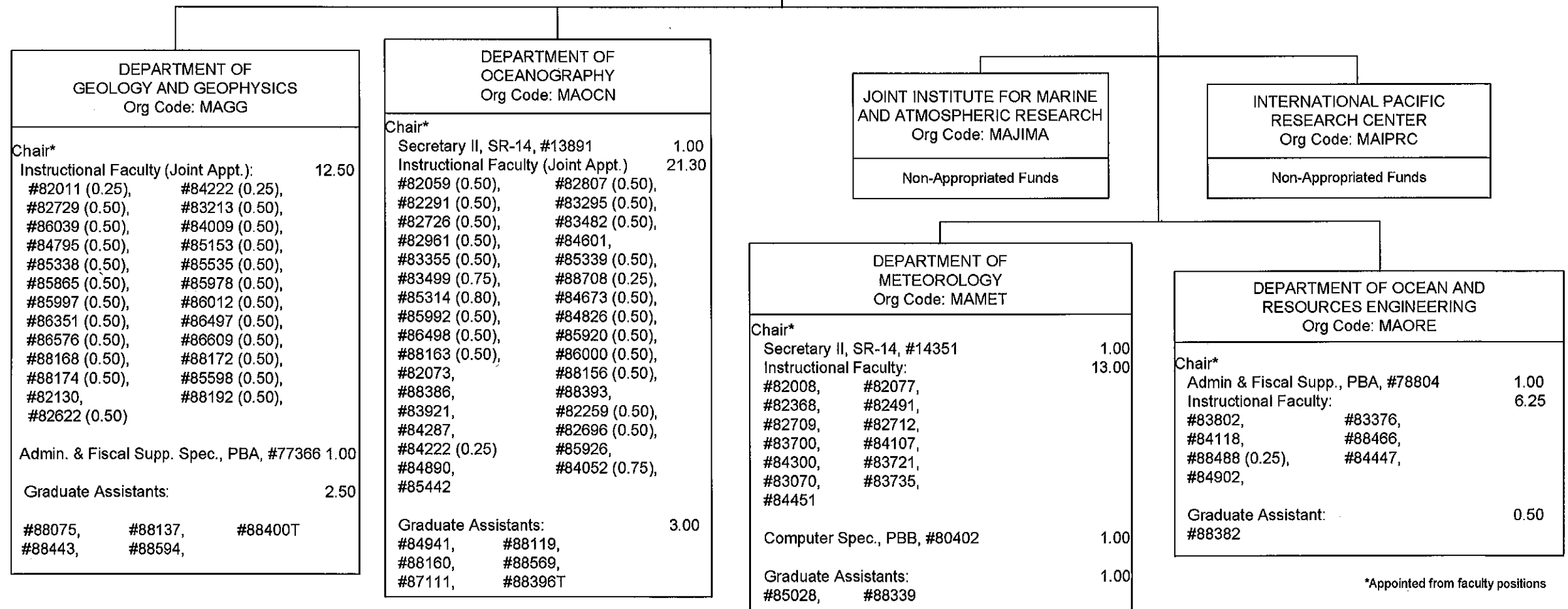
OFFICE OF THE ASSOCIATE DEAN FOR ACADEMIC
AFFAIRS
Org Code: MAAAOE

Assoc. Dean, #89267	1.00
Secretary III, SR-16, #42541	1.00
Student Svcs Spec, PBB, #78897	1.00
Specialist Type Faculty: #82423	1.00

STATE OF HAWAII
UNIVERSITY OF HAWAII
UNIVERSITY OF HAWAII AT MANOA
SCHOOL OF OCEAN AND EARTH
SCIENCE AND TECHNOLOGY

DEPARTMENTS
POSITION ORGANIZATION CHART

CHART II
General Funds: 68.05
General Funds (Auth Temp): 1.00



*Appointed from faculty positions

OFFICE OF THE DEAN
SCHOOL OF OCEAN AND EARTH SCIENCE
AND TECHNOLOGY

OFFICE OF THE
ASSOCIATE DEAN FOR RESEARCH
Assoc. Dean, #89053 1.00

STATE OF HAWAII
UNIVERSITY OF HAWAII
UNIVERSITY OF HAWAII AT MANOA
SCHOOL OF OCEAN AND EARTH
SCIENCE AND TECHNOLOGY

RESEARCH DIVISIONS
POSITION ORGANIZATION CHART

CHART III
General Funds: 36.20

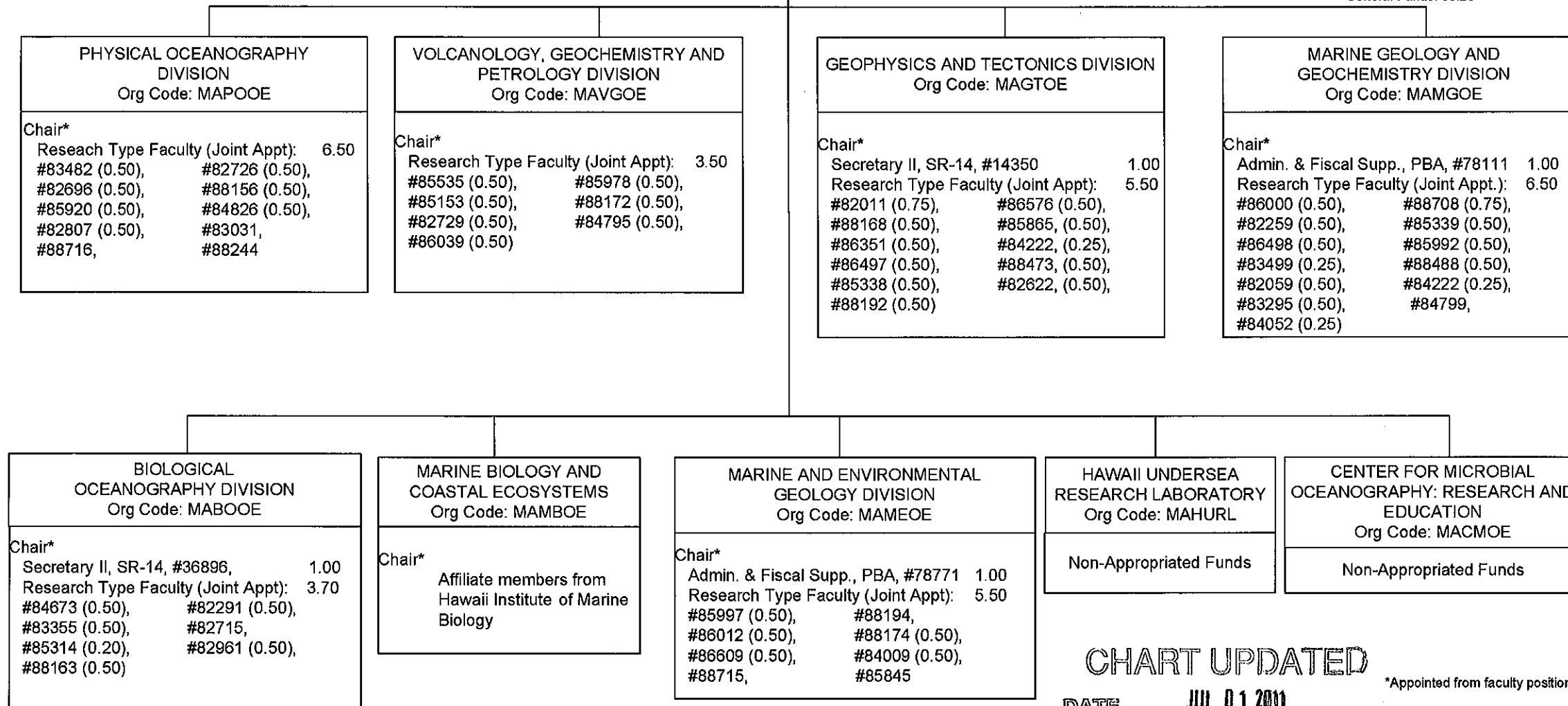


CHART UPDATED
DATE JUL 01 2011

*Appointed from faculty positions

STATE OF HAWAII
UNIVERSITY OF HAWAII
UNIVERSITY OF HAWAII AT MANOA
SCHOOL OF OCEAN AND EARTH
SCIENCE AND TECHNOLOGY

OFFICE OF THE DEAN
POSITION ORGANIZATION CHART

CHART IV

General Funds: 19.00

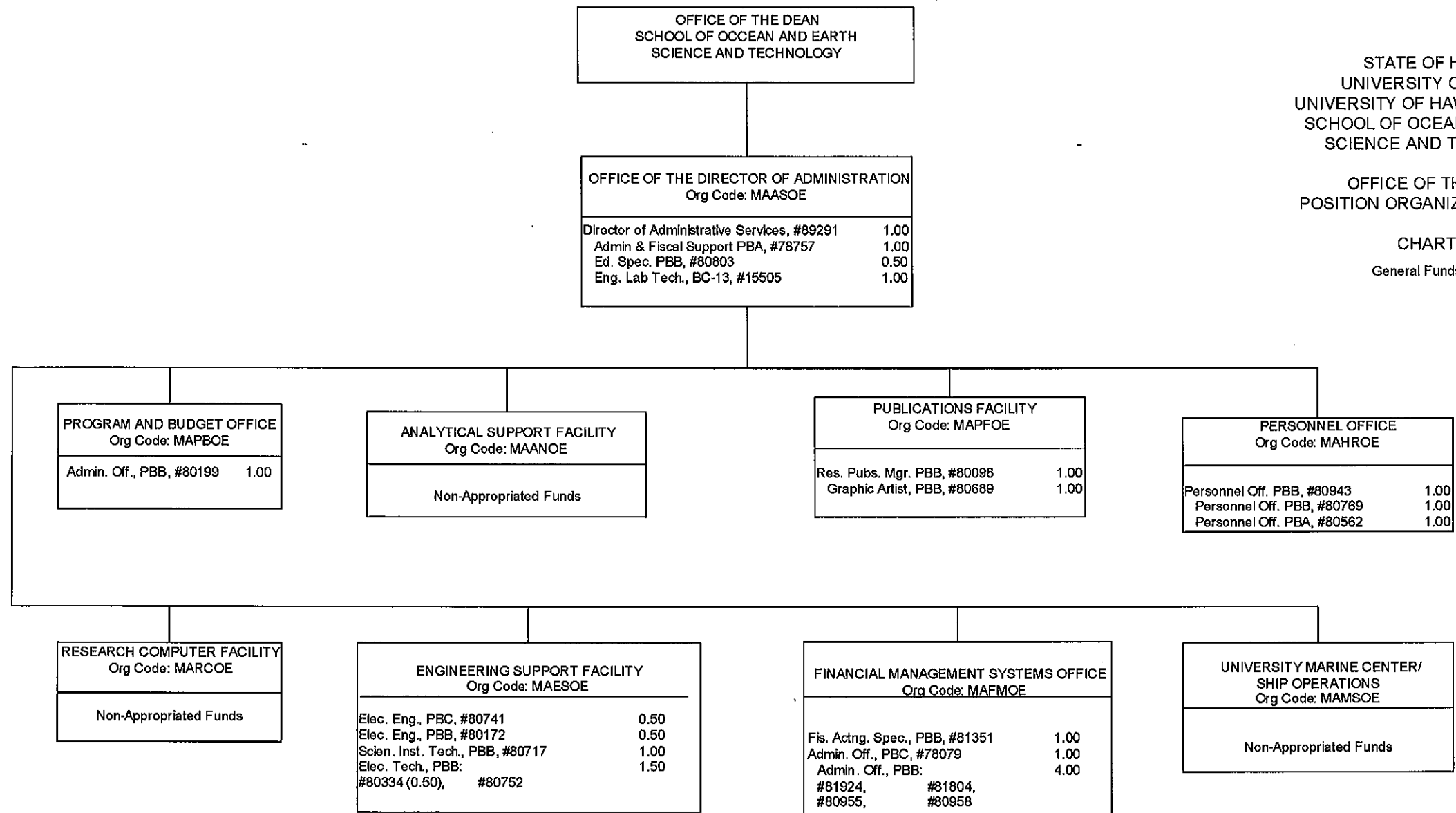


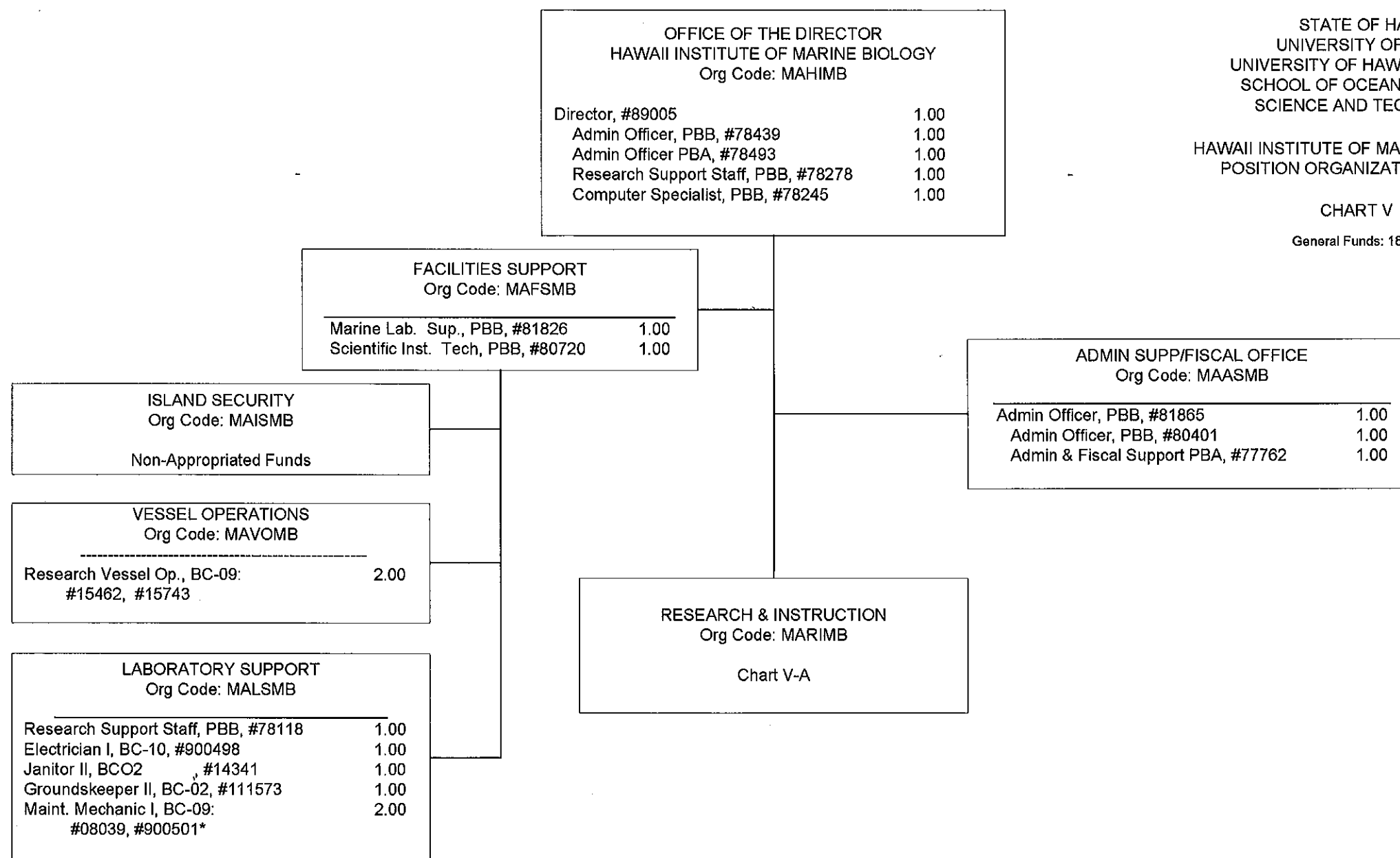
CHART UPDATED
DATE JUL 01 2011

STATE OF HAWAII
UNIVERSITY OF HAWAII
UNIVERSITY OF HAWAII AT MANOA
SCHOOL OF OCEAN AND EARTH
SCIENCE AND TECHNOLOGY

HAWAII INSTITUTE OF MARINE BIOLOGY
POSITION ORGANIZATION CHART

CHART V

General Funds: 18.00



* Position abolished, to be re-established

CHART UPDATED
DATE JUL 01 2011

OFFICE OF THE DIRECTOR
HAWAII INSTITUTE FOR MARINE BIOLOGY

RESEARCH & INSTRUCTION
Org Code: MARIMB

Specialist Type Faculty:	3.00
#88730, #86035, #86043	

STATE OF HAWAII
UNIVERSITY OF HAWAII
UNIVERSITY OF HAWAII AT MANOA
SCHOOL OF OCEAN AND EARTH
SCIENCE AND TECHNOLOGY
HAWAII INSTITUTE OF MARINE BIOLOGY
POSITION ORGANIZATION CHART

CHART V-A
General Funds: 17.00

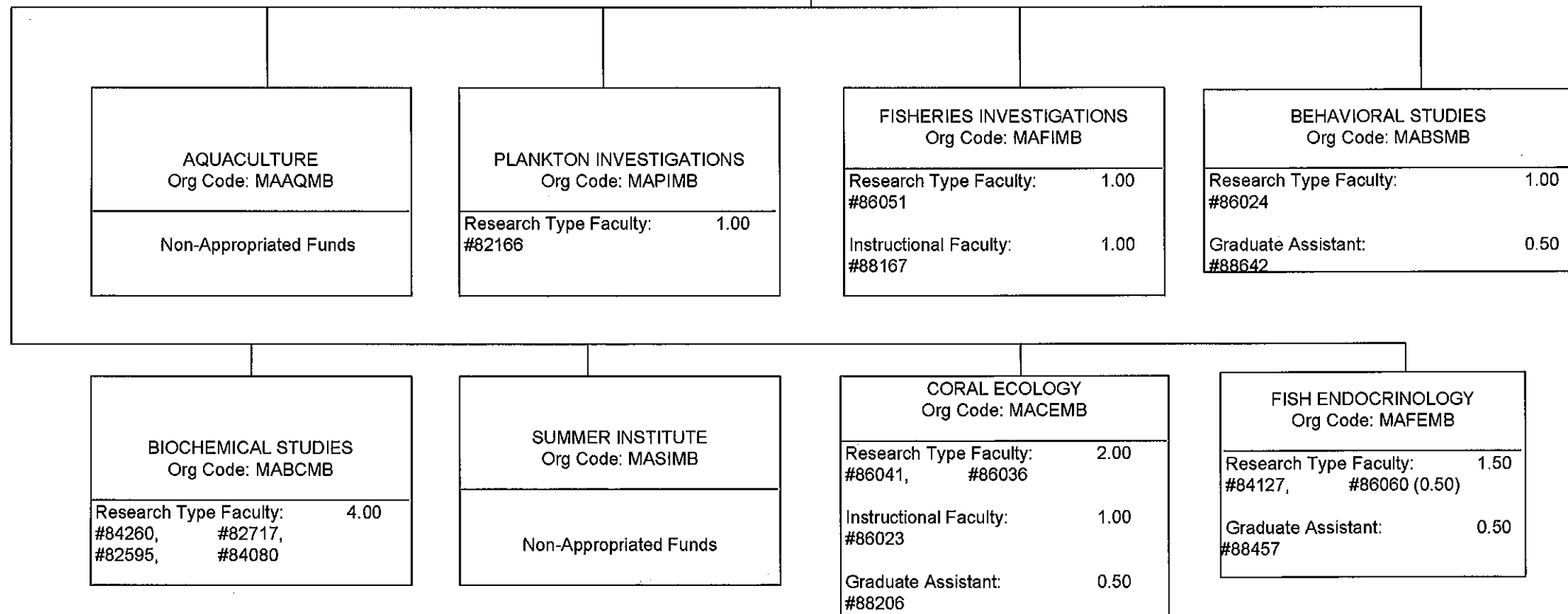


CHART UPDATED
DATE JUL 01 2011

OFFICE OF THE DEAN
SCHOOL OF OCEAN AND EARTH
SCIENCE AND TECHNOLOGY

OFFICE OF THE DIRECTOR
HAWAII INSTITUTE OF GEOPHYSICS
AND PLANETOLOGY
Org Code: MAHIGP

Director, #89123 1.00
Secretary III, SR-16, #14353 1.00
Assoc. Director **

STATE OF HAWAII
UNIVERSITY OF HAWAII
UNIVERSITY OF HAWAII AT MANOA
SCHOOL OF OCEAN AND EARTH
SCIENCE AND TECHNOLOGY

HAWAII INSTITUTE OF GEOPHYSICS
AND PLANETOLOGY
POSITION ORGANIZATION CHART

CHART VI

General Funds: 30.00

PLANETOLOGY
Org Code: MAPLGP

Chair* 1.00
Secretary II, SR-14, #11980 14.00
Research Type Faculty:
#86038, #82625,
#86407, #86215,
#82103, #88185,
#85998, #84928,
#86011, #88508,
#84382, #82800,
#86021, #88370

GEOPHYSICAL STUDIES
Org Code: MAGSGP

Chair* 6.00
Research Type Faculty:
#83201, #88484,
#83293, #84046,
#87436, #85831

TECHNOLOGY DEVELOPMENT
Org Code: MATDGP

Chair* 2.00
Research Type Faculty:
#88399,
#85973

APPLIED RESEARCH
Org Code: MAARGP

Chair* 2.00
Research Type Faculty:
#85996, #85359

MINERAL PHYSICS
Org Code: MAMPGP

Chair* 1.00
Mechanical Eng., PBB, #80782 2.00
Research Type Faculty:
#85004, #83491

* Appointed from Faculty Positions
** Faculty R5 appointed from research position

CHART UPDATED

DATE JUL 01 2011

STATE OF HAWAII
 UNIVERSITY OF HAWAII
 UNIVERSITY OF HAWAII AT MANOA
 SCHOOL OF OCEAN AND EARTH
 SCIENCE AND TECHNOLOGY

HAWAII NATURAL ENERGY INSTITUTE
 POSITION ORGANIZATION CHART

CHART VII
 General Funds: 12.00

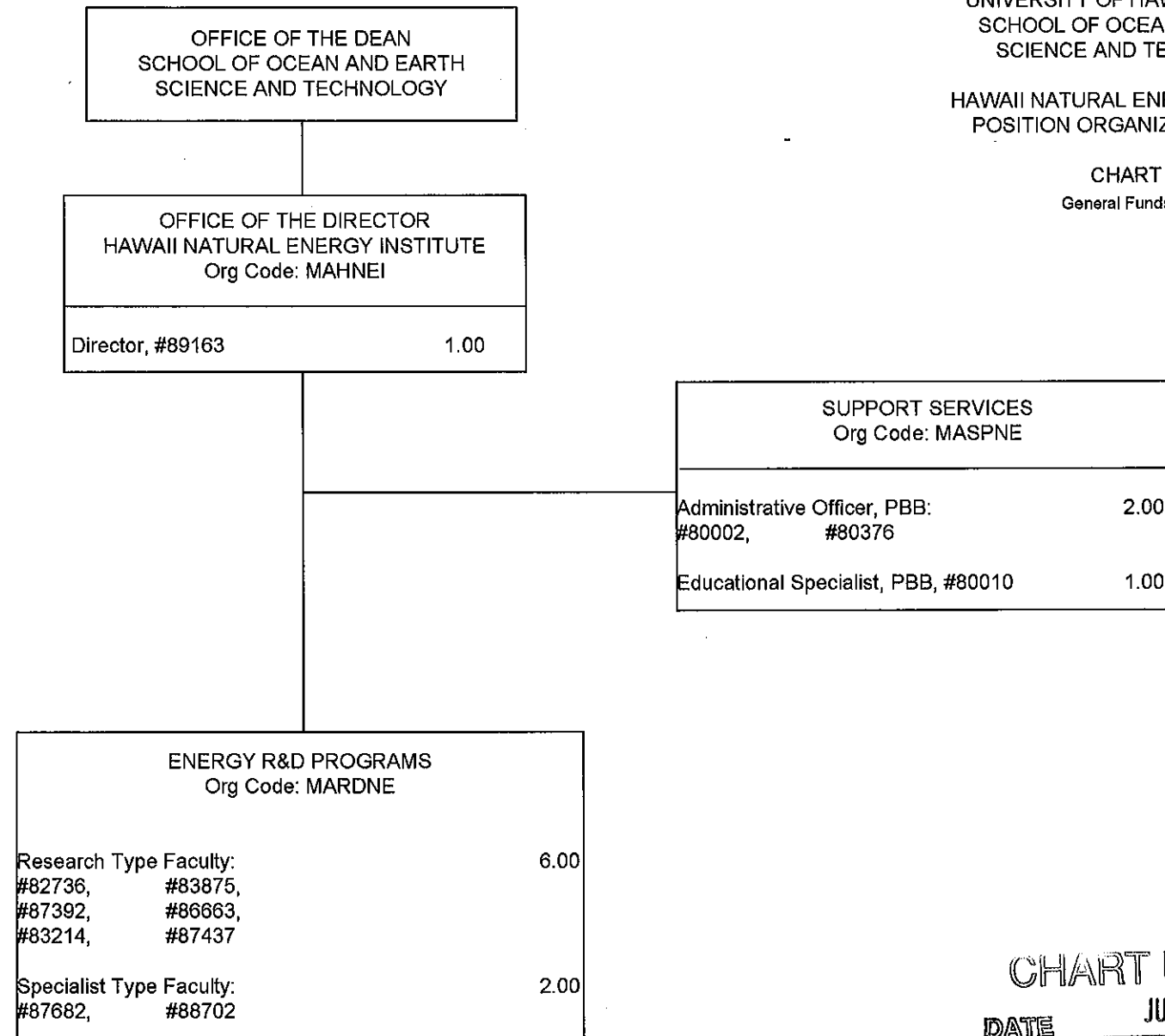


CHART UPDATED
 DATE JUL 01 2011

STATE OF HAWAII
UNIVERSITY OF HAWAII
UNIVERSITY OF HAWAII AT MANOA
SCHOOL OF OCEAN AND EARTH
SCIENCE AND TECHNOLOGY

SEA GRANT COLLEGE PROGRAM
ORGANIZATION CHART

CHART VIII
General Funds: 5.50

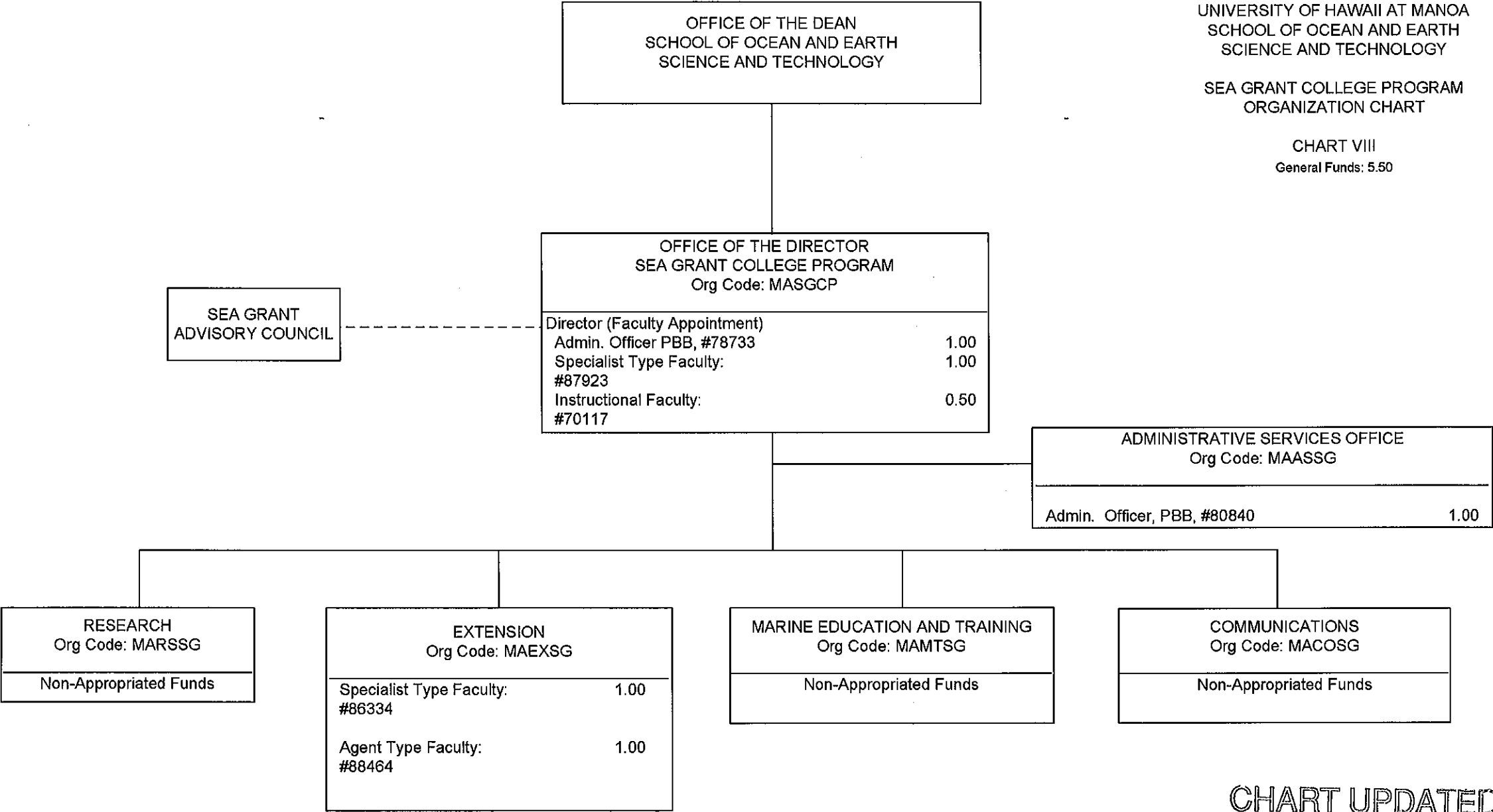


CHART UPDATED
JUL 01 2011
DATE _____