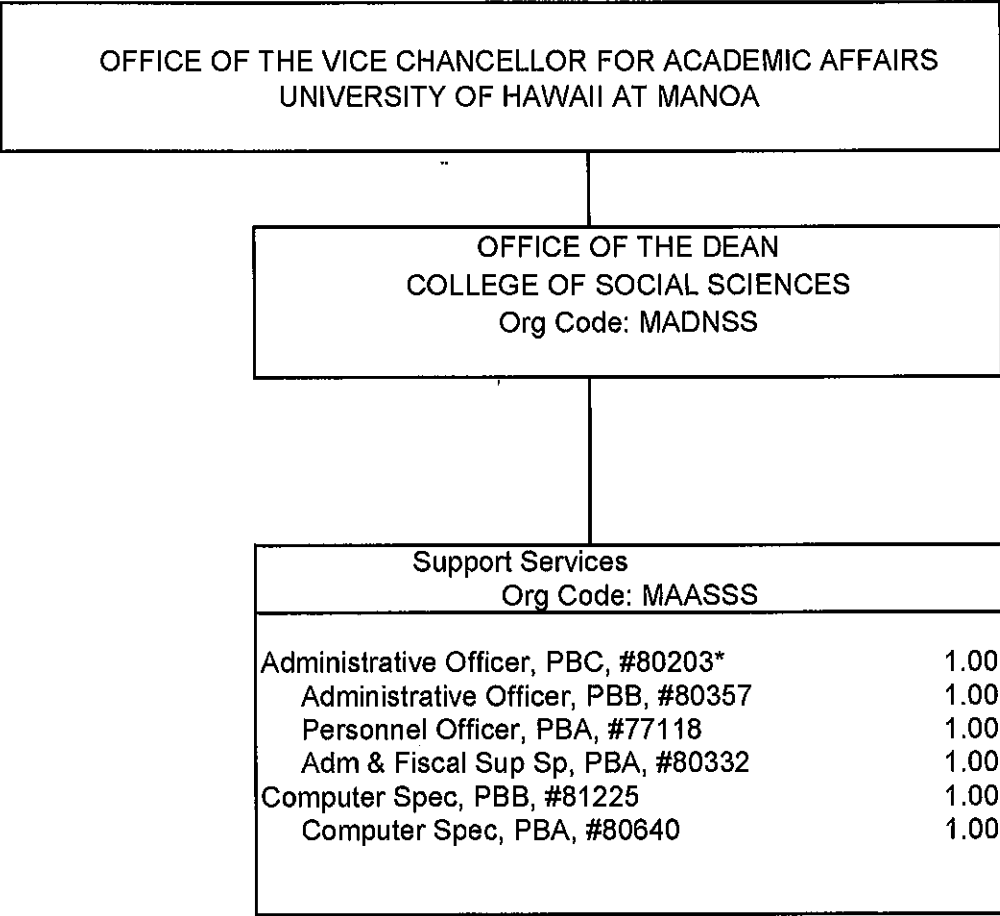


GENERAL FUND FTE: 2.50

CHART UPDATED

DATE JUL 01 2011



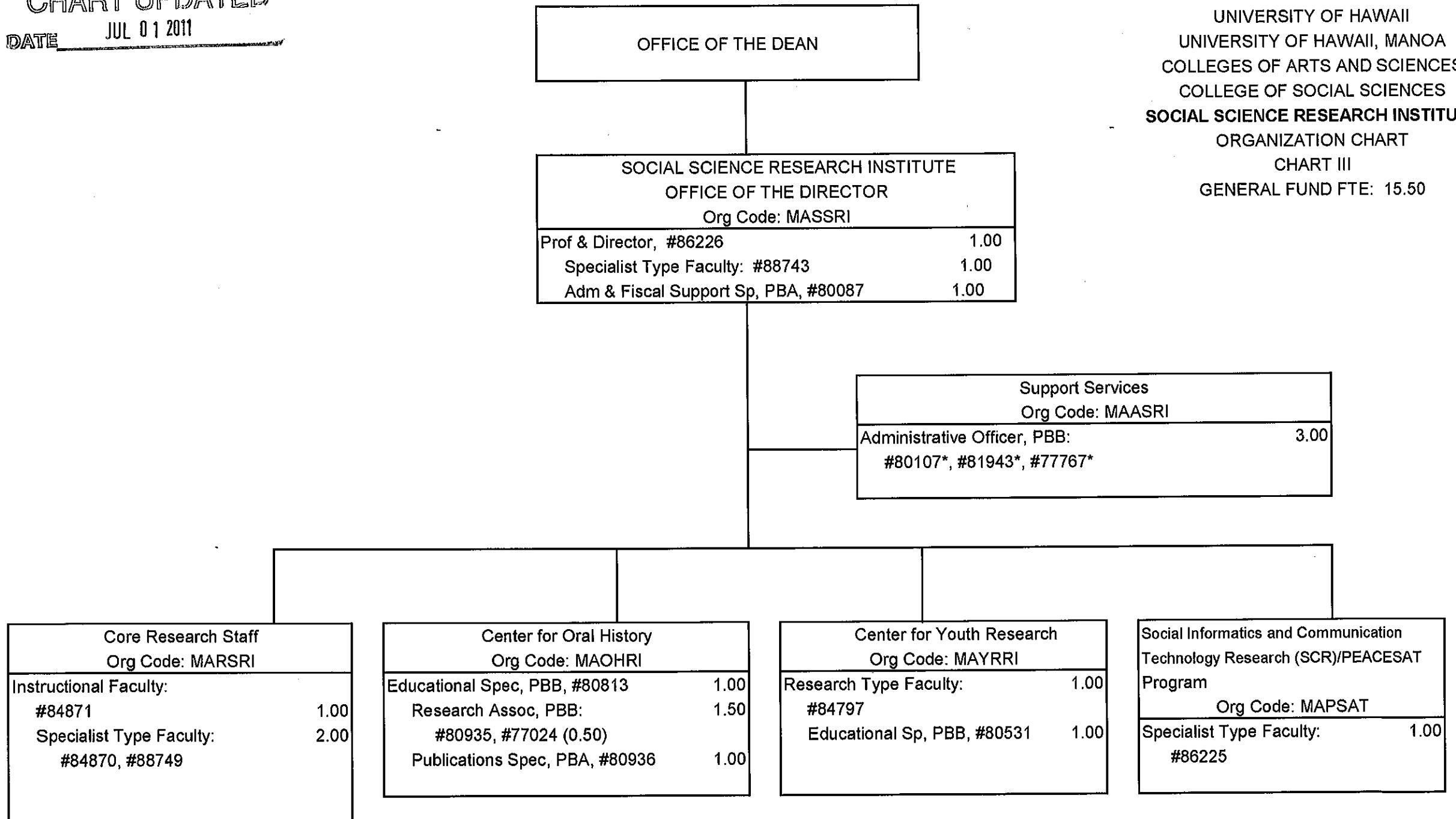
STATE OF HAWAII
UNIVERSITY OF HAWAII
UNIVERSITY OF HAWAII AT MANOA
COLLEGE OF ARTS AND SCIENCES
COLLEGE OF SOCIAL SCIENCES
OFFICE OF THE DEAN
ORGANIZATION CHART
CHART II

GENERAL FUND FTE: 6.00

* Provides technical supervision to positions #77767, #80107, #81943

CHART UPDATED
DATE JUL 01 2011

STATE OF HAWAII
UNIVERSITY OF HAWAII
UNIVERSITY OF HAWAII, MANOA
COLLEGES OF ARTS AND SCIENCES
COLLEGE OF SOCIAL SCIENCES
SOCIAL SCIENCE RESEARCH INSTITUTE
ORGANIZATION CHART
CHART III
GENERAL FUND FTE: 15.50



OFFICE OF THE DEAN

STATE OF HAWAII
UNIVERSITY OF HAWAII
UNIVERSITY OF HAWAII AT MANOA
COLLEGES OF ARTS AND SCIENCES
COLLEGE OF SOCIAL SCIENCES
DEPARTMENT OF ANTHROPOLOGY
ORGANIZATION CHART
CHART IV-a

GENERAL FUND FTE: 24.50

| DEPARTMENT OF ANTHROPOLOGY | |
|---|----------------|
| Org Code: MAANTH | |
| Chair (appointed from faculty positions) | |
| Secretary II, SR-14, #13482 | 1.00 |
| Adm & Fiscal Support Sp, PBA, #80639 | 1.00 |
| Educational Sp, PBB, #81746 | 1.00 |
| Instructional Faculty: | 16.50 |
| #82188, #82195, #82779, #83004, #83358, #83458, #83574, #83720, #83756, #83924, #84206, #84502, #84575, #84825, #84831, #85082, #84921 (0.50) | |
| Specialist Type Faculty: | 1.00 |
| #82638 | |
| Graduate Assistants: | 4.00 |
| #83831, #88064, #88189, #88367, #88416, #88529 #88591, #88620 | |
| | ----- 24.50 |

CHART UPDATED
DATE JUL 01 2011

OFFICE OF THE DEAN

STATE OF HAWAII
UNIVERSITY OF HAWAII
UNIVERSITY OF HAWAII AT MANOA
COLLEGES OF ARTS AND SCIENCES
COLLEGE OF SOCIAL SCIENCES
SCHOOL OF COMMUNICATIONS
ORGANIZATION CHART
CHART IV-b

GENERAL FUND FTE: 16.50

| SCHOOL OF COMMUNICATIONS | |
|---|----------------|
| Org Code: MACOMS | |
| Chair (appointed from faculty positions) | |
| Secretary II, SR-14, #13807 | 1.00 |
| Office Assistant III, SR-08, #48445 | 1.00 |
| Instructional Faculty: | 12.00 |
| #82279, #82294, #82500, #82871, #82946, #82982, #83753, #84217, #84643, #84792, #88619 #70041 | |
| Graduate Assistants: | 2.50 |
| #88210, #88534, #88581, #88607, #88681 | |
| | ----- 16.50 |

CHART UPDATED

DATE JUL 01 2011

OFFICE OF THE DEAN

STATE OF HAWAII
UNIVERSITY OF HAWAII
UNIVERSITY OF HAWAII AT MANOA
COLLEGES OF ARTS AND SCIENCES
COLLEGE OF SOCIAL SCIENCES
DEPARTMENT OF ECONOMICS
ORGANIZATION CHART
CHART IV-c

GENERAL FUND FTE: 29.00

| DEPARTMENT OF ECONOMICS | | | | | |
|--|---------|---------|---------|---------|-------|
| Org Code: MAECON | | | | | |
| Chair (appointed from faculty positions) | | | | | |
| Secretary II, SR-14, #14362 | | | | | 1.00 |
| Adm & Fiscal Support Sp, PBA, #77989 | | | | | 1.00 |
| Instructional Faculty: | | | | | 22.50 |
| #82192, | #82286, | #82323, | #82679, | #82777, | |
| #82838, | #82916, | #83023, | #83411, | #83484, | |
| #83611, | #83748, | #83943, | #84047, | #84054, | |
| #84286 (0.50), | #84399, | #84556, | #84815, | #84816, | |
| #84829, | #85027, | #88169 | | | |
| Graduate Assistants: | | | | | 4.50 |
| #88061, | #88175, | #88193, | #88233, | #88248 | |
| #88262, | #88420, | #88517, | #88631 | | |
| | | | | | ----- |
| | | | | | 29.00 |

CHART UPDATED
DATE JUL 01 2011

OFFICE OF THE DEAN

STATE OF HAWAII
UNIVERSITY OF HAWAII
UNIVERSITY OF HAWAII AT MANOA
COLLEGES OF ARTS AND SCIENCES
COLLEGE OF SOCIAL SCIENCES
DEPARTMENT OF ETHNIC STUDIES
- ORGANIZATION CHART
CHART IV-d

GENERAL FUND FTE: 10.00

| DEPARTMENT OF ETHNIC STUDIES | |
|---|----------------|
| Org Code: MAES | |
| Chair (appointed from faculty positions) | |
| Secretary II, SR-14, #24006 | 1.00 |
| Instructional Faculty: #82125, #83195, #84801, #84805, #84813, #84819, #85586 , #84807 (0.50), #84810 (0.50), #84822 (0.50) | 8.50 |
| Graduate Assistants: #88217 | 0.50 |
| | ----- 10.00 |

CHART UPDATED
DATE JUL 01 2011

OFFICE OF THE DEAN

STATE OF HAWAII
UNIVERSITY OF HAWAII
UNIVERSITY OF HAWAII AT MANOA
COLLEGES OF ARTS AND SCIENCES
COLLEGE OF SOCIAL SCIENCES
DEPARTMENT OF GEOGRAPHY
- ORGANIZATION CHART
CHART IV-e

| DEPARTMENT OF GEOGRAPHY | |
|---|----------------|
| Org Code: MAGEOG | |
| Chair (appointed from faculty positions) | |
| Secretary II, SR-14, #14358 | 1.00 |
| Adm & Fiscal Support Sp, PBA, #79306 | 1.00 |
| Educational Sp, PBB, #80641 | 1.00 |
| Instructional Faculty: | 16.00 |
| #82328, #82332, #82680, #82681, #82708, #83405, #83935, #84209, #84254, #84478, #84491, #84518, #84565, #84841, #84868, #84917 | |
| Graduate Assistants: | 3.50 |
| #84864, #88065, #88103, #88110, #88140, #88232, #88446 | |
| | ----- 22.50 |

GENERAL FUND FTE: 22.50

CHART UPDATED
DATE JUL 01 2011

OFFICE OF THE DEAN

STATE OF HAWAII
 UNIVERSITY OF HAWAII
 UNIVERSITY OF HAWAII AT MANOA
 COLLEGES OF ARTS AND SCIENCES
 COLLEGE OF SOCIAL SCIENCES
DEPARTMENT OF POLITICAL SCIENCE
 - ORGANIZATION CHART
 CHART IV-f

GENERAL FUND FTE: 28.0

| DEPARTMENT OF POLITICAL SCIENCE | |
|---|----------------|
| Org Code: MAPOLS | |
| Chair (appointed from faculty positions) | |
| Secretary II, SR-14, #11112 | 1.00 |
| Adm & Fiscal Support Sp, PBA, #77635 | 1.00 |
| Instructional Faculty: | 22.00 |
| #82145, #82278, #82317, #82913, #83085, #83194, #83311, #83370, #83621, #83778, #83858, #84023, #84059, #84109, #84121, #84130, #84234, #84800, #84824, #84834 (0.50), #88113, #82823 (0.50), #88549 (0.50), #84286 (.50) | |
| Graduate Assistants: | 4.00 |
| #84880, #85507, #88076, #88090, #88238, #88336, #88407, #88676 | |
| | ----- 28.00 |

CHART UPDATED
 DATE JUL 01 2011

OFFICE OF THE DEAN

STATE OF HAWAII
UNIVERSITY OF HAWAII
UNIVERSITY OF HAWAII AT MANOA
COLLEGES OF ARTS AND SCIENCES
COLLEGE OF SOCIAL SCIENCES
DEPARTMENT OF PSYCHOLOGY
ORGANIZATION CHARTS
CHART IV-g

GENERAL FUND FTE: 33.50

| DEPARTMENT OF PSYCHOLOGY | |
|---|-------|
| Org Code: MAPSY | |
| Chair (appointed from faculty positions) | |
| Director, Clinical Studies (appointed from faculty positions) | |
| Secretary II, SR-14, #12856 | 1.00 |
| Clerk-Stenographer III, SR-11, #19052 | 1.00 |
| Educational Sp, PBB, #80638 | 1.00 |
| Instructional Faculty: | 24.00 |
| #82198, #82398, #82412, #82471, #82534, | |
| #82537, #82615, #82629, #82870, #83092, | |
| #83110, #83507, #83626, #84131, #84416, | |
| #84497, #84505, #84791, #84828, #84866, | |
| #85075, #85450, #85881, #88005 | |
| Specialist Type Faculty: | 1.00 |
| #82114 | |
| Graduate Assistants: | 5.50 |
| #83275, #85148, #88046, #88060, #88252, | |
| #88320, #88362, #88392, #88506, #88511, | |
| #88559 | |
| | ----- |
| | 33.50 |

CHART UPDATED
DATE JUL 01 2011

OFFICE OF THE DEAN

| PUBLIC ADMINISTRATION PROGRAM | |
|---|---------------|
| Org Code: MAPUBA | |
| Director (appointed from faculty positions) | |
| Educational Sp, PBA, #78232 | 1.00 |
| Instructional Faculty: | 7.00 |
| #82905, #83162, #83178, #83292, #83302, #84818, #84903 | |
| Graduate Assistants: | 0.50 |
| #88208 | |
| | ----- 8.50 |

STATE OF HAWAII
UNIVERSITY OF HAWAII
UNIVERSITY OF HAWAII AT MANOA
COLLEGES OF ARTS AND SCIENCES
COLLEGE OF SOCIAL SCIENCES
PUBLIC ADMINISTRATION PROGRAM
ORGANIZATION CHART
Chart IV-h

GENERAL FUND FTE: 8.50

CHART UPDATED

DATE JUL 01 2011

OFFICE OF THE DEAN

STATE OF HAWAII
UNIVERSITY OF HAWAII
UNIVERSITY OF HAWAII AT MANOA
COLLEGES OF ARTS AND SCIENCES
COLLEGE OF SOCIAL SCIENCES
DEPARTMENT OF SOCIOLOGY
-ORGANIZATION CHART
CHART IV-i

GENERAL FUND FTE: 22.50

| DEPARTMENT OF SOCIOLOGY | |
|--|----------------|
| Org Code: MASOC | |
| Chair (appointed from faculty positions) | |
| Secretary II, SR-14, #13485 | 1.00 |
| Adm & Fiscal Support Sp, PBA, #77562 | 1.00 |
| Instructional Faculty: | 16.50 |
| #82084, #82097, #82204, #82207, #82602, | |
| #82605, #83713, #84076, #84237, #84346, | |
| #84456, #84504, #84616, #84642, #84827, | |
| #85806 , #84823 (0.50) | |
| Graduate Assistants: | 4.00 |
| #88008, #88100, #88182, #88408, #88485, | |
| #88498, #88533, #88616 | |
| | ----- 22.50 |

CHART UPDATED
DATE JUL 01 2011

OFFICE OF THE DEAN

STATE OF HAWAII
UNIVERSITY OF HAWAII
UNIVERSITY OF HAWAII AT MANOA
COLLEGES OF ARTS AND SCIENCES
COLLEGE OF SOCIAL SCIENCES
DEPARTMENT OF URBAN AND REGIONAL PLANNING
ORGANIZATION CHART
CHART IV-j

GENERAL FUND FTE: 12.50

| DEPARTMENT OF URBAN AND REGIONAL PLANNING | |
|---|-------|
| Org Code: MAPLAN | |
| Chair (appointed from faculty positions) | |
| Secretary II, SR-14, #15640 | 1.00 |
| Instructional Faculty: | 11.50 |
| # 82377, #82539, #83624, #84042, #84060, | |
| #84351, #84522, #84830, #85298, #85736, | |
| #88154, #84811(0.50) | |
| | ----- |
| | 12.50 |

CHART UPDATED
DATE JUL 01 2011

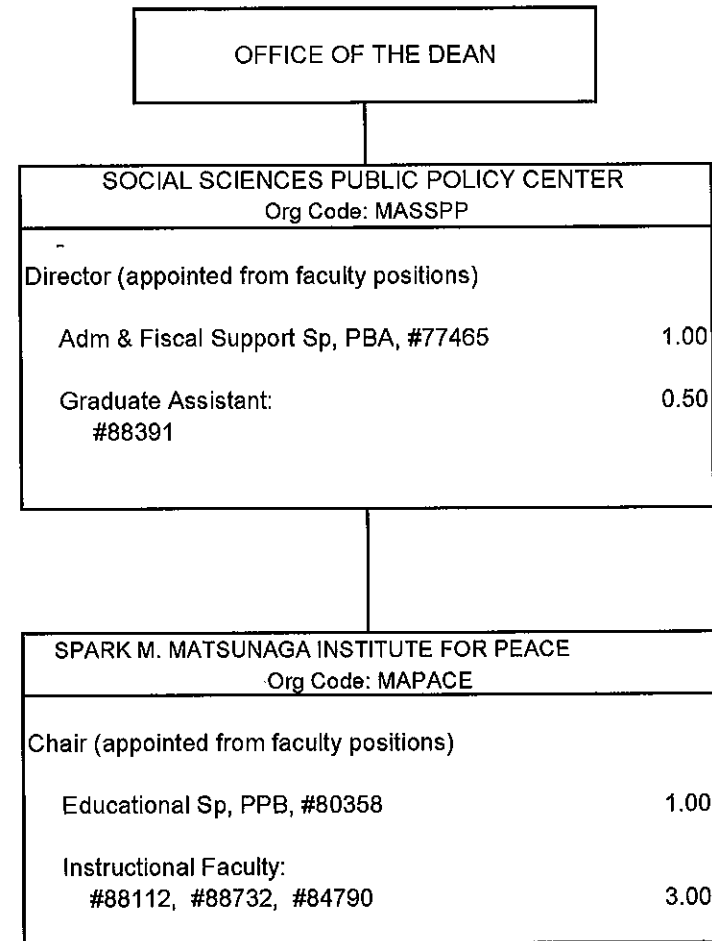
OFFICE OF THE DEAN

STATE OF HAWAII
UNIVERSITY OF HAWAII
UNIVERSITY OF HAWAII AT MANOA
COLLEGES OF ARTS AND SCIENCES
COLLEGE OF SOCIAL SCIENCES
WOMEN'S STUDIES PROGRAM
ORGANIZATION CHART
CHART IV-k

GENERAL FUND FTE: 7.50

| WOMEN'S STUDIES PROGRAM | |
|---|---------------|
| Org Code: MAWS | |
| Director (appointed from faculty positions) | |
| Secretary II, SR-14, #31328 | 1.00 |
| Instructional Faculty: #82280, #83050, #84804, #84817, #86071, #84057 (0.50), #85962 (0.50) | 6.00 |
| Graduate Assistants: #88268 | 0.50 |
| | ----- 7.50 |

CHART UPDATED
DATE JUL 01 2011



STATE OF HAWAII
UNIVERSITY OF HAWAII
UNIVERSITY OF HAWAII AT MANOA
COLLEGES OF ARTS AND SCIENCES
COLLEGE OF SOCIAL SCIENCES
SOCIAL SCIENCES PUBLIC POLICY CENTER
ORGANIZATION CHART
CHART IV-I

GENERAL FUND FTE: 5.50

CHART UPDATED
DATE JUL 01 2011