

CHART UPDATED
DATE JUL 01 2011

CHANCELLOR
UNIVERSITY OF HAWAII AT MANOA

OFFICE OF THE VICE CHANCELLOR FOR ACADEMIC AFFAIRS

OFFICE OF THE DEAN
CHART II

OFFICE OF COMMUNICATION SERVICES
CHART II

OFFICE OF PLANNING AND MANAGEMENT SYSTEMS
CHART II

OFFICE OF ADMINISTRATIVE SERVICES
CHART II

OFFICE OF THE ASSOCIATE DEAN FOR
ACADEMIC AND STUDENT AFFAIRS
CHART II

OFFICE OF THE ASSOCIATE DEAN AND
ASSOCIATE DIRECTOR FOR RESEARCH
CHART II

OFFICE OF THE ASSOCIATE DEAN AND
ASSOCIATE DIRECTOR FOR COOPERATIVE EXTENSION
CHART II

COUNTY ADMINISTRATION CHARTS
CHART IX

AGRICULTURAL DIAGNOSTIC SERVICE CENTER
CHART IX

FAMILY & CONSUMER SCIENCE
CHART III

HUMAN NUTRITION,
FOOD & ANIMAL SCIENCE
CHART IV

MOLECULAR BIOSCIENCE &
BIOSYSTEMS ENGINEERING
CHART V

NATURAL RESOURCES &
ENVIRONMENTAL MANAGEMENT
CHART VI

PLANT & ENVIRONMENTAL
PRODUCTION SCIENCE
CHART VII

TROPICAL PLANT & SOIL SCIENCE
CHART VIII

STATE OF HAWAII
UNIVERSITY OF HAWAII
UNIVERSITY OF HAWAII AT MĀNOA
COLLEGE OF TROPICAL AGRICULTURE AND
HUMAN RESOURCES
ORGANIZATION CHART

CHART I

Grand Total By Fund:
General Funds: 303.76 FTE
General Funds (Auth Temp): 1.00 FTE

STATE OF HAWAI'I
UNIVERSITY OF HAWAI'I
UNIVERSITY OF HAWAI'I AT MĀNOA
COLLEGE OF TROPICAL AGRICULTURE AND
HUMAN RESOURCES
ORGANIZATION CHART

OFFICE OF THE DEAN
CHART II

Chart Total:
General Funds: 41.00 FTE

OFFICE OF THE VICE CHANCELLOR FOR ACADEMIC AFFAIRS

OFFICE OF THE DEAN
Org Code: MADNTR

Dean, #89020 1.00
Educational Specialist, PBB, #78721 1.00
Office Assistant III, SR-08, #42680 1.00

OFFICE OF COMMUNICATION SERVICES
Org Code: MACSTR

Public Information Officer, PBB, #80586 1.00
Public Information Officer, PBB, #81711 1.00
Editor, PBB, #81391 1.00
Office Assistant IV, SR-10, #18008 1.00

OFFICE OF PLANNING AND MANAGEMENT SYSTEMS
Org Code: MAPMTR

Educational Specialist, PBC, #80797 1.00
Computer Specialist, PBC, #80939 1.00
Computer Specialist, PBB #81362 1.00
Computer Specialist, PBA, #81954 1.00
Budget Specialist, PBB, #80210 1.00
Environmental Safety Specialist, PBB, #80980 1.00
Secretary I, SR-12, #19416 1.00

OFFICE OF ADMINISTRATIVE SERVICES
Org Code: MAASTR

Director, #89022 1.00
Secretary II, SR-14, #00790 1.00

Fiscal
Administrative Officer, PBB, #81677 1.00
Fiscal Officer, PBB, #77924, #78719, #80295, #80310 4.00
Fiscal Accounting Specialist, PBA, #81073 1.00
Admin & Fiscal Support Specialist, PBA, #77925, #79084, #79085, #80000, #80249 5.00

Personnel
Personnel Officer, PBB, #80949 1.00
Personnel Officer, PBA #80212, #81498 2.00

OFFICE OF THE ASSOCIATE DEAN
FOR ACADEMIC AND STUDENT AFFAIRS
Org Code: MAAATR

Associate Dean for Academic Affairs, #89047 1.00
Secretary III, SR-16, #00505 1.00
Student Services Specialist, PBB, #81694 1.00
Office Assistant IV, SR-10, #14339 1.00

OFFICE OF THE ASSOCIATE DEAN
AND ASSOCIATE DIRECTOR FOR RESEARCH
Org Code: MARSTR

Associate Dean for Academic Affairs, #89124 1.00
Secretary III, SR-16, #00425 1.00
Specialist, #85546 1.00
Secretary II, SR-14, #22932 1.00

OFFICE OF THE ASSOCIATE DEAN
AND ASSOCIATE DIRECTOR FOR COOPERATIVE EXTENSION
Org Code: MAEXTR

Associate Dean for Academic Affairs, #89069 1.00
Secretary III, SR-16, #00789 1.00

STATE OF HAWAI'I
UNIVERSITY OF HAWAI'I
UNIVERSITY OF HAWAI'I AT MĀNOA
COLLEGE OF TROPICAL AGRICULTURE AND
HUMAN RESOURCES
ORGANIZATION CHART

DEPARTMENT OF FAMILY AND CONSUMER SCIENCES
CHART III

Chart Total:
General Funds: 39.85 FTE
General Funds (Auth Temp): 0.50 FTE

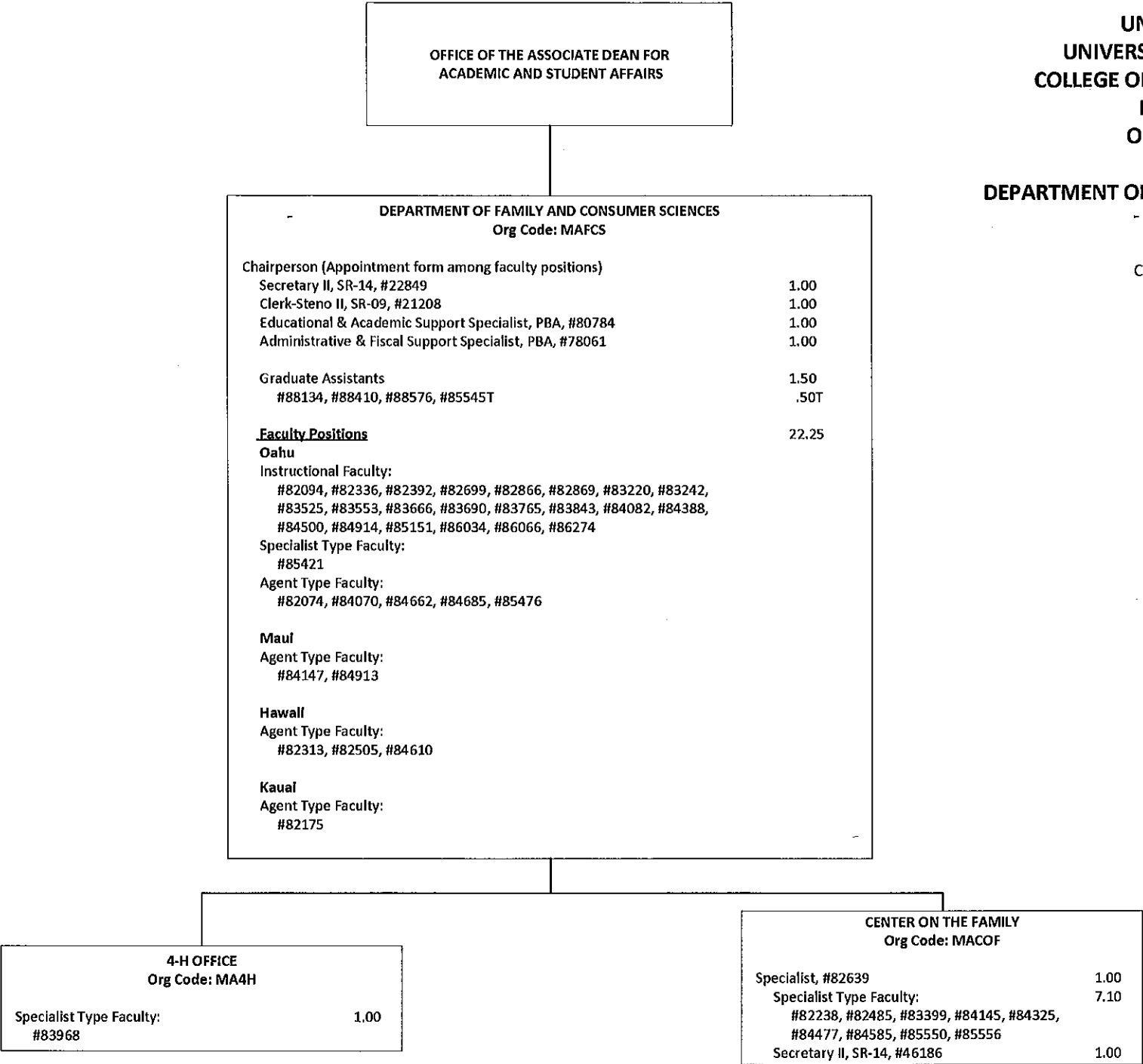


CHART UPDATED
DATE JUL 01 2011

Civil Service position deleted #04108, #4115
(2.00)

STATE OF HAWAII
UNIVERSITY OF HAWAII
UNIVERSITY OF HAWAII AT MĀNOA
COLLEGE OF TROPICAL AGRICULTURE AND
HUMAN RESOURCES
ORGANIZATION CHART

DEPARTMENT OF HUMAN NUTRITION, FOOD AND
ANIMAL SCIENCES
CHART IV

Chart Total:
General Funds: 28.55 FTE

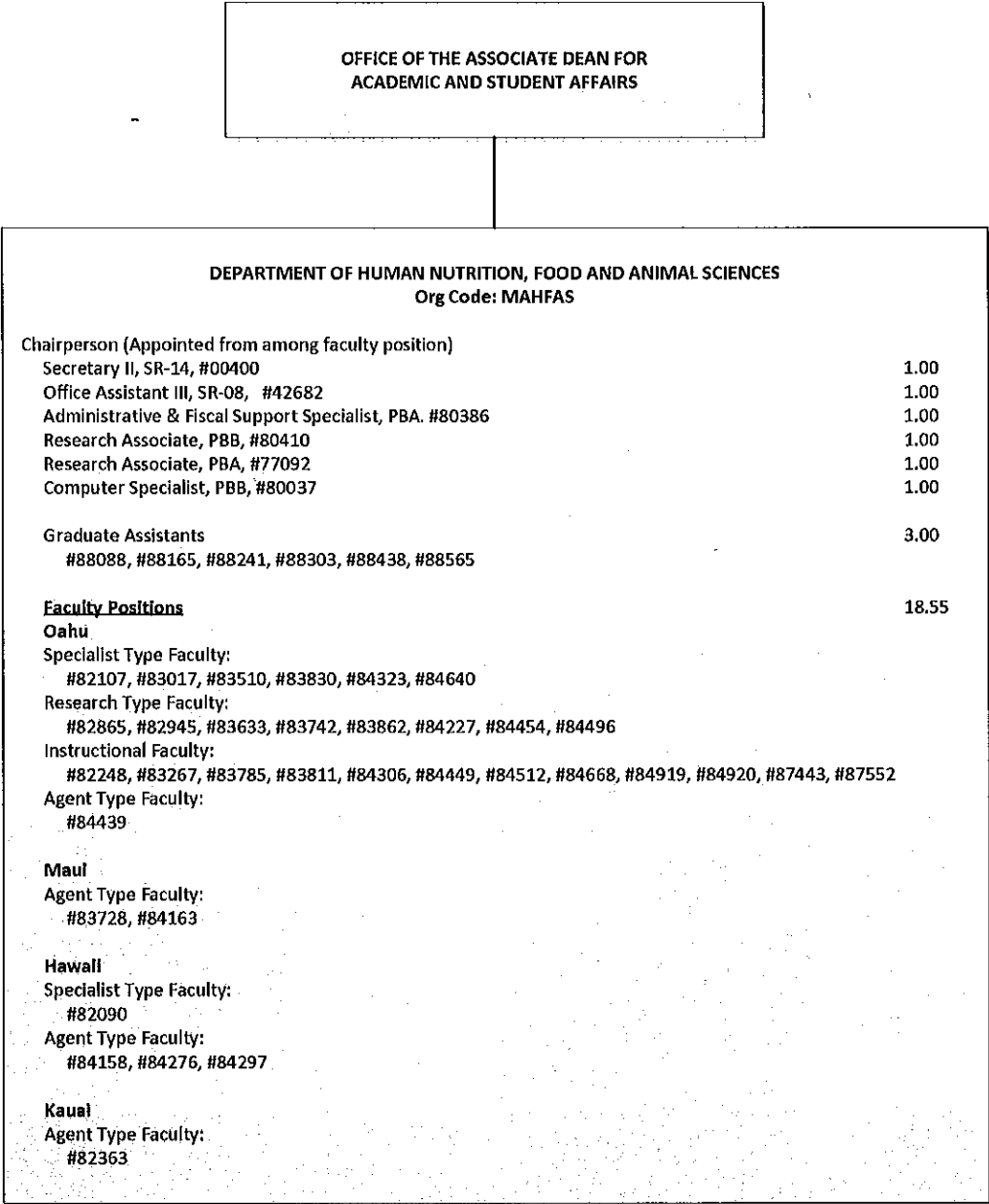


CHART UPDATED
DATE JUL 01 2011

STATE OF HAWAII
UNIVERSITY OF HAWAII
UNIVERSITY OF HAWAII AT MĀNOA
COLLEGE OF TROPICAL AGRICULTURE AND
HUMAN RESOURCES
ORGANIZATION CHART

DEPARTMENT OF MOLECULAR BIOSCIENCES AND
BIOENGINEERING
CHART V

Chart Total:
General Funds: 21.92 FTE

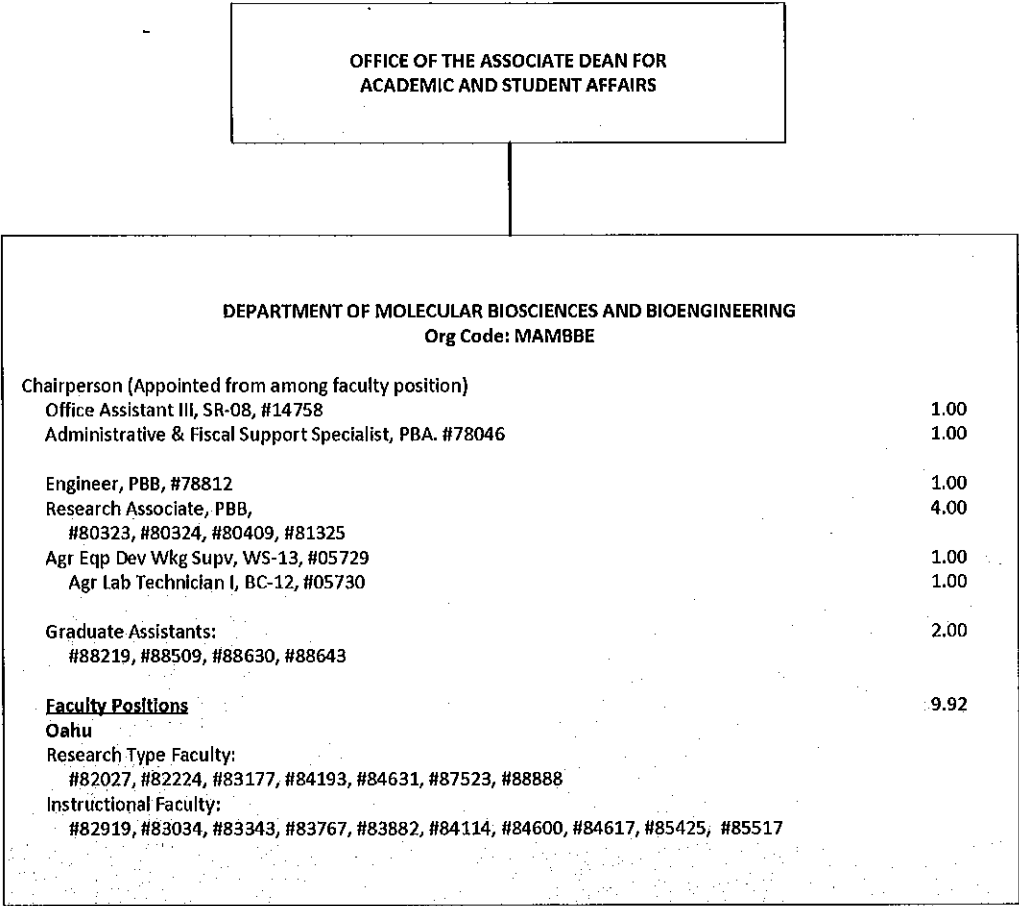


CHART UPDATED
DATE JUL 01 2011

STATE OF HAWAI'I
UNIVERSITY OF HAWAI'I
UNIVERSITY OF HAWAI'I AT MĀNOA
COLLEGE OF TROPICAL AGRICULTURE AND
HUMAN RESOURCES
ORGANIZATION CHART

DEPARTMENT OF NATURAL RESOURCES AND
ENVIRONMENTAL MANAGEMENT
CHART VI

Chart Total:
General Funds: 25.10 FTE

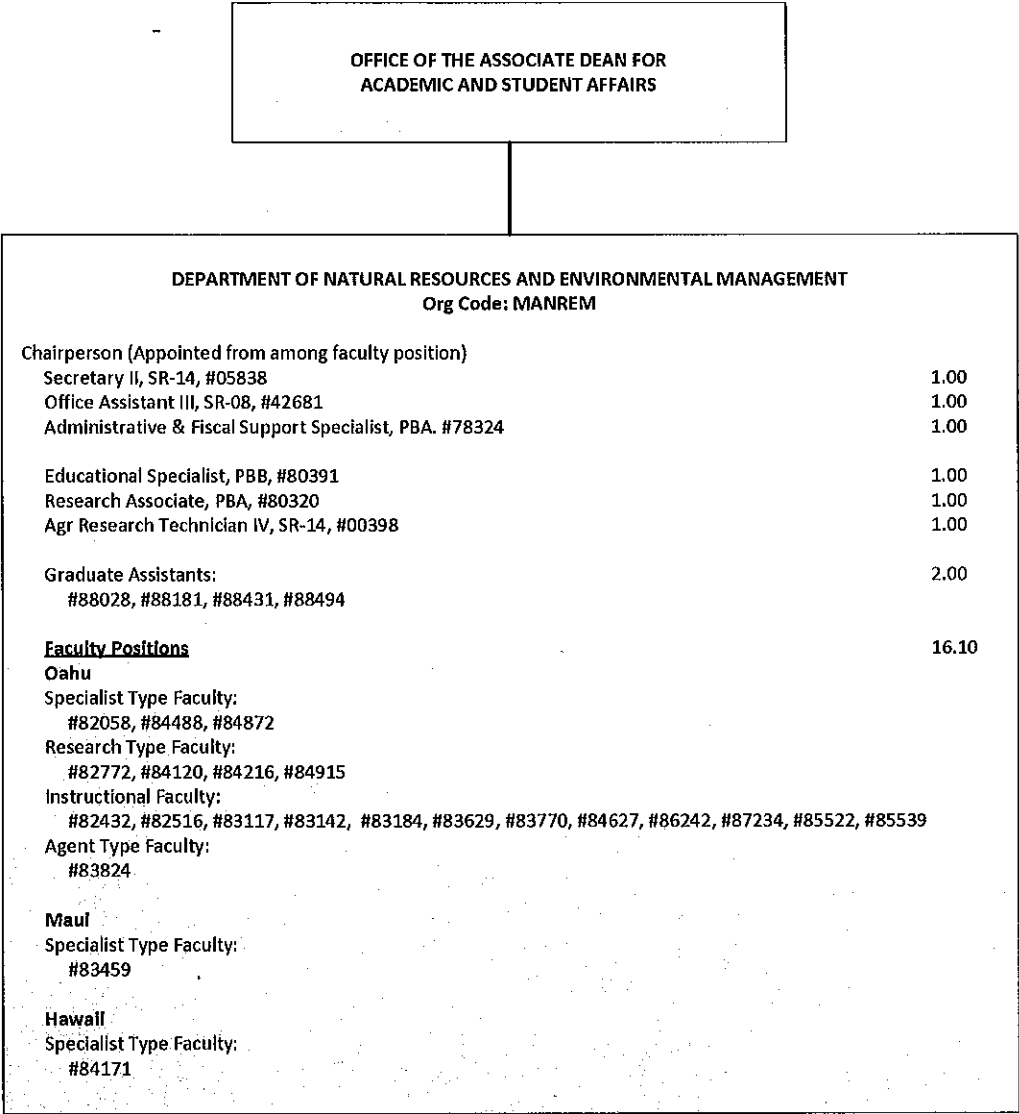


CHART UPDATED
DATE JUL 01 2011

OFFICE OF THE ASSOCIATE DEAN FOR
ACADEMIC AND STUDENT AFFAIRS

STATE OF HAWAII
UNIVERSITY OF HAWAII
UNIVERSITY OF HAWAII AT MĀNOA
COLLEGE OF TROPICAL AGRICULTURE AND
HUMAN RESOURCES
ORGANIZATION CHART

DEPARTMENT OF PLANT AND ENVIRONMENTAL PROTECTION SCIENCES
Org Code: MAPEPS

Chairperson (Appointed from among faculty position)	
Secretary II, SR-14, #07477	1.00
Office Assistant III, SR-08, #00794, #15509	2.00
Administrative & Fiscal Support Specialist, PBA, #77864	1.00
Educational Specialist, PBB, #80250	1.00
Research Associate, PBB, #80385, #80388, #81178, #81311	4.00
Research Associate, PBA, #81313	1.00
Agr Research Technician V, SR-16, #00442	1.00
Agr Research Technician IV, SR-14, #24270	1.00
Agr Research Technician III, SR-11, #24269	1.00
Graduate Assistants: #88486, #84932	1.00
Faculty Positions	10.06
Oahu	
Specialist Type Faculty: #82550, #82985, #83320, #83513, #84006, #84911	
Research Type Faculty: #82047, #82976, #83067, #83884, #84041, #84316	
Instructional Faculty: #82139, #84138, #85510, #85543, #85547, #85548	
Agent Type Faculty: #84489, #85551	
Maul	
Agent Type Faculty: #85530	
Hawaii	
Research Type Faculty: #83542	
Agent Type Faculty: #82722, #83462, #85538	
Kauai	
Research Type Faculty: #83840	
Instructional Type Faculty: #85505	
Agent Type Faculty: #83816	

DEPARTMENT OF PLANT AND ENVIRONMENTAL
PROTECTION SCIENCES
CHART VII

Chart Total:
General Funds: 24.06 FTE

CHART UPDATED
DATE JUL 01 2011

OFFICE OF THE ASSOCIATE DEAN FOR
ACADEMIC AND STUDENT AFFAIRS

STATE OF HAWAI'I
UNIVERSITY OF HAWAI'I
UNIVERSITY OF HAWAI'I AT MĀNOA
COLLEGE OF TROPICAL AGRICULTURE AND
HUMAN RESOURCES
ORGANIZATION CHART

DEPARTMENT OF TROPICAL PLANT AND SOIL SCIENCE
Org Code: MATPSS

Chairperson (Appointed from among faculty position)	
Secretary II, SR-14, #00793	1.00
Clerk-Stenographer III, SR-11, #00399	1.00
Administrative & Fiscal Support Specialist, PBA. #77795	1.00
Research Associate, PBB, #80270, #80313	2.00
Agr Research Technician V, SR-16, #11019	1.00
Agr Research Technician IV, SR-14, #00397, #05392, #15512	3.00
Graduate Assistants:	1.00
#88171, #88423, #85388T	.50T
Faculty Positions	21.28
Oahu	
Specialist Type Faculty:	
#82598, #83159, #83304, #83388, #83682, #84321, #84501, #84916, #85555, #86275	
Research Type Faculty:	
#82023, #82240, #82464, #82747, #83260, #83740, #83938, #84067, #84408, #84420, #84481	
Agent Type Faculty:	
#82181, #82687, #82704, #82881, #85563, #85778	
Maul	
Research Type Faculty:	
#84530	
Agent Type Faculty:	
#83848, #84075, #85477, #87584	
Hawaii	
Research Type Faculty:	
#83073, #83286, #84354	
Specialist Type Faculty:	
#83515	
Agent Type Faculty:	
#82758, #82951, #83054, #84648, #85542	
Kauai	
Agent Type Faculty:	
#82196	

DEPARTMENT OF TROPICAL PLANT AND SOIL SCIENCE
CHART VIII

Chart Total:
General Funds: 31.28 FTE
General Funds (Auth Temp): 0.50 FTE

CHART UPDATED

DATE JUL 01 2011

STATE OF HAWAI'I
UNIVERSITY OF HAWAI'I
UNIVERSITY OF HAWAI'I AT MĀNOA
COLLEGE OF TROPICAL AGRICULTURE AND
HUMAN RESOURCES
ORGANIZATION CHART

COUNTY ADMINISTRATION
CHART IX

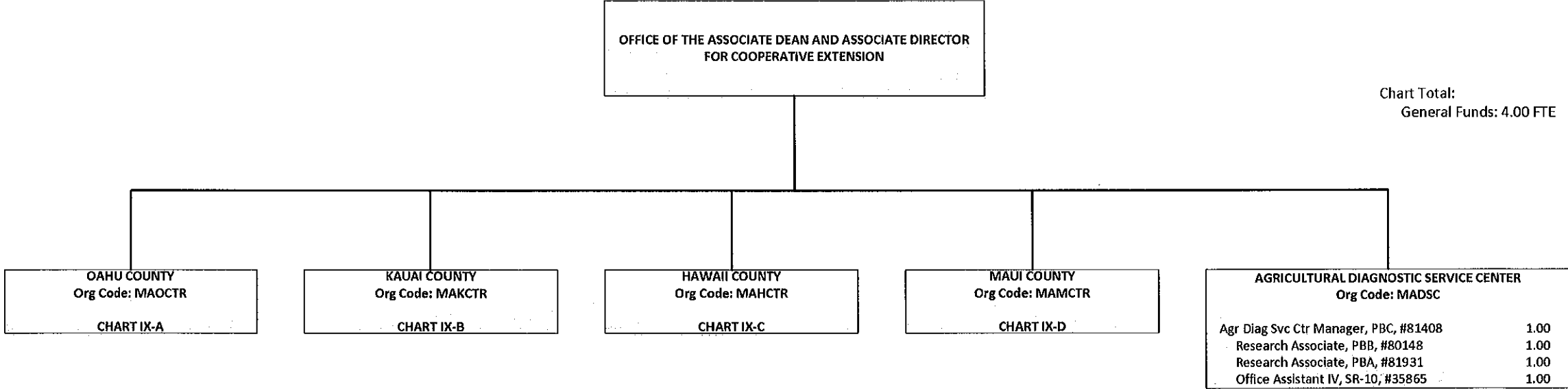


CHART UPDATED
DATE JUL 01 2011

STATE OF HAWAI'I
UNIVERSITY OF HAWAI'I
UNIVERSITY OF HAWAI'I AT MĀNOA
COLLEGE OF TROPICAL AGRICULTURE AND
HUMAN RESOURCES
ORGANIZATION CHART

OAHU COUNTY
CHART IX-A

Chart Total:
General Funds: 31.00 FTE

OFFICE OF THE ASSOCIATE DEAN AND ASSOCIATE DIRECTOR FOR COOPERATIVE EXTENSION		
OAHU COUNTY Org Code: MAOCTR		
County Administrator, #89431		1.00
HONOLULU		
Secretary II, SR-14, #21284		1.00
WAHIAWA		
Clerk-Stenographer III, SR-11, #00806		1.00
URBAN GARDEN CENTER		
Office Assistant IV, SR-10, #00802		1.00
POAMOHO EXPERIMENT STATION		
Agr Res Tech VI, SR-18, #00429		1.00
Agr Res Tech III, SR-11, #15515		1.00
WAIMANALO EXPERIMENT STATION		
Agr Res Tech VI, SR-18, #007479		1.00
Agr Res Tech IV, SR-14, #09077, #11021, #11023		3.00
Agr Res Tech III, SR-11, #4484		1.00
Bulldozer Operator II, BC-10, #4480		1.00
Agr Res Tech VI, SR-18, #00428		1.00
Agr Res Tech V, SR-16, #00396, #11024		2.00
Agr Res Tech IV, SR-14, #00433		1.00
Agr Res Tech III, SR-11, #00418, #00434, #03712		3.00
Equipment Operator III, BC-09, #00419		1.00

CHART UPDATED
DATE JUL 01 2011

STATE OF HAWAI'I
UNIVERSITY OF HAWAI'I
UNIVERSITY OF HAWAI'I AT MĀNOA
COLLEGE OF TROPICAL AGRICULTURE AND
HUMAN RESOURCES
ORGANIZATION CHART

KAUAI COUNTY
CHART IX-B

Chart Total:
General Funds: 8.00 FTE

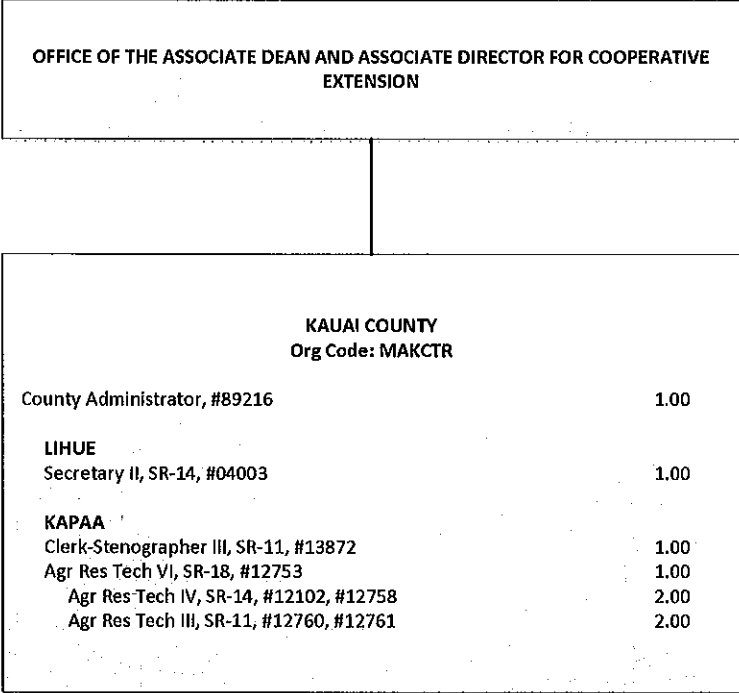


CHART UPDATED
DATE JUL 01 2011

OFFICE OF THE ASSOCIATE DEAN AND ASSOCIATE DIRECTOR FOR COOPERATIVE
EXTENSION

HAWAII COUNTY
Org Code: MAHCTR

County Administrator, #89213	1.00
KOMOHANA	
Secretary II, SR-14, #13871	1.00
Office Assistant III, SR-08, #00791	1.00
KONA	
Office Assistant IV, SR-10, #00797	1.00
KAMUELA	
Office Assistant IV, SR-10, #00799	1.00

HAWAII COUNTY TECHNICAL SUPPORT
Org Code: MAHTTR

Educational Specialist, PBB, #80311	1.00
EAST HAWAII	
Agr Res Tech VI, SR-18, #12099	1.00
WAIAKEA	
Agr Res Tech V, SR-16, #12101, #12094, #14166	3.00
Agr Res Tech IV, SR-14, #12096, #12767, #14168, #12098, #15497	5.00
Agr Res Tech III, SR-11, #17602	1.00
Building Maintenance Worker I, BC-09, #12095	1.00
VOLCANO	
Agr Res Tech V, SR-16, #13206	1.00
Agr Res Tech IV, SR-14, #12097	1.00
MALAMA-KI	
Agr Res Tech III, SR-11, #12765	1.00
WEST HAWAII	
Agr Res Tech VI, SR-18, #13530	1.00
MEALANI	
Agr Res Tech V, SR-16, #13534	1.00
Agr Res Tech IV, SR-14, #12100	1.00
Agr Res Tech III, SR-11, #13205, #44868, #44867	3.00
HAMAKUA	
KONA	
Agr Res Tech V, SR-16, #00409	1.00
Agr Res Tech IV, SR-14, #22912	1.00

STATE OF HAWAI'I
UNIVERSITY OF HAWAI'I
UNIVERSITY OF HAWAI'I AT MĀNOA
COLLEGE OF TROPICAL AGRICULTURE AND
HUMAN RESOURCES
ORGANIZATION CHART

HAWAII COUNTY
CHART IX-C

Chart Total:
General Funds: 33.00 FTE

CHART UPDATED
DATE JUL 01 2011

Civil Service positions deleted #09084, #12766, #13536,
#13709, #14590 (5.00)

STATE OF HAWAI'I
UNIVERSITY OF HAWAI'I
UNIVERSITY OF HAWAI'I AT MĀNOA
COLLEGE OF TROPICAL AGRICULTURE AND
HUMAN RESOURCES
ORGANIZATION CHART

MAUI COUNTY
CHART IX-D

Chart Total:
General Funds: 16.00 FTE

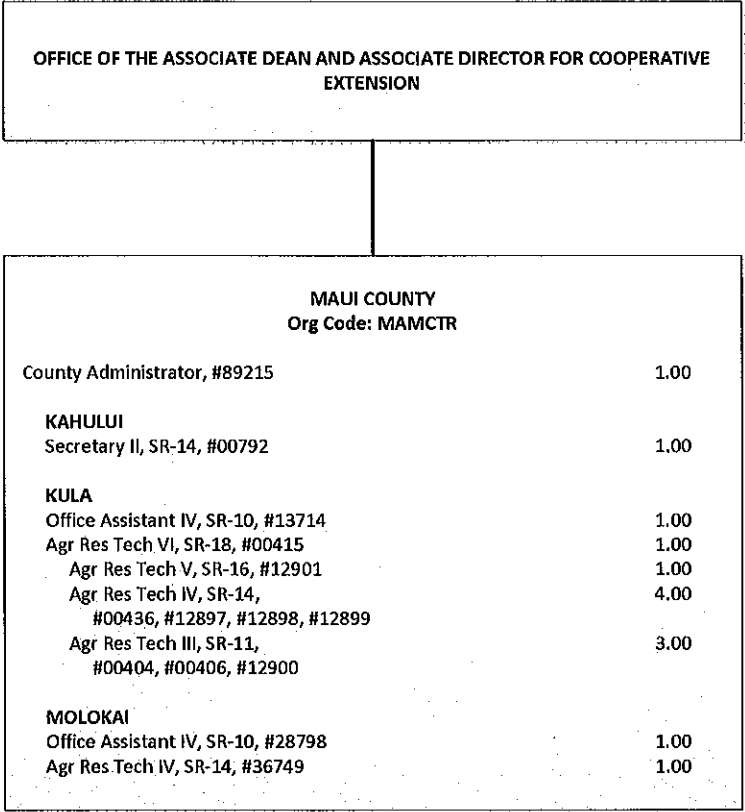


CHART UPDATED
DATE JUL 01 2011

Civil Service position deleted #12902, #42422 (2.00)