

STATE OF HAWAII
UNIVERSITY OF HAWAII
UNIVERSITY OF HAWAII AT MANOA
OFFICE OF THE VICE CHANCELLOR
FOR STUDENTS

ORGANIZATIONAL CHART
CHART IV

GENERAL FUND FTE 17.00

*New, position number. Redescription
pending.
**Also serves as Enrollment Management
and Director

GRAND TOTAL BY FUND

GENERAL FUND FTE	188.00
GENERAL FUND FTE (AUTH TEMP)	4.00
SPECIAL FUND (B) FTE	66.00
REVOLVING FUND (W) FTE	24.25

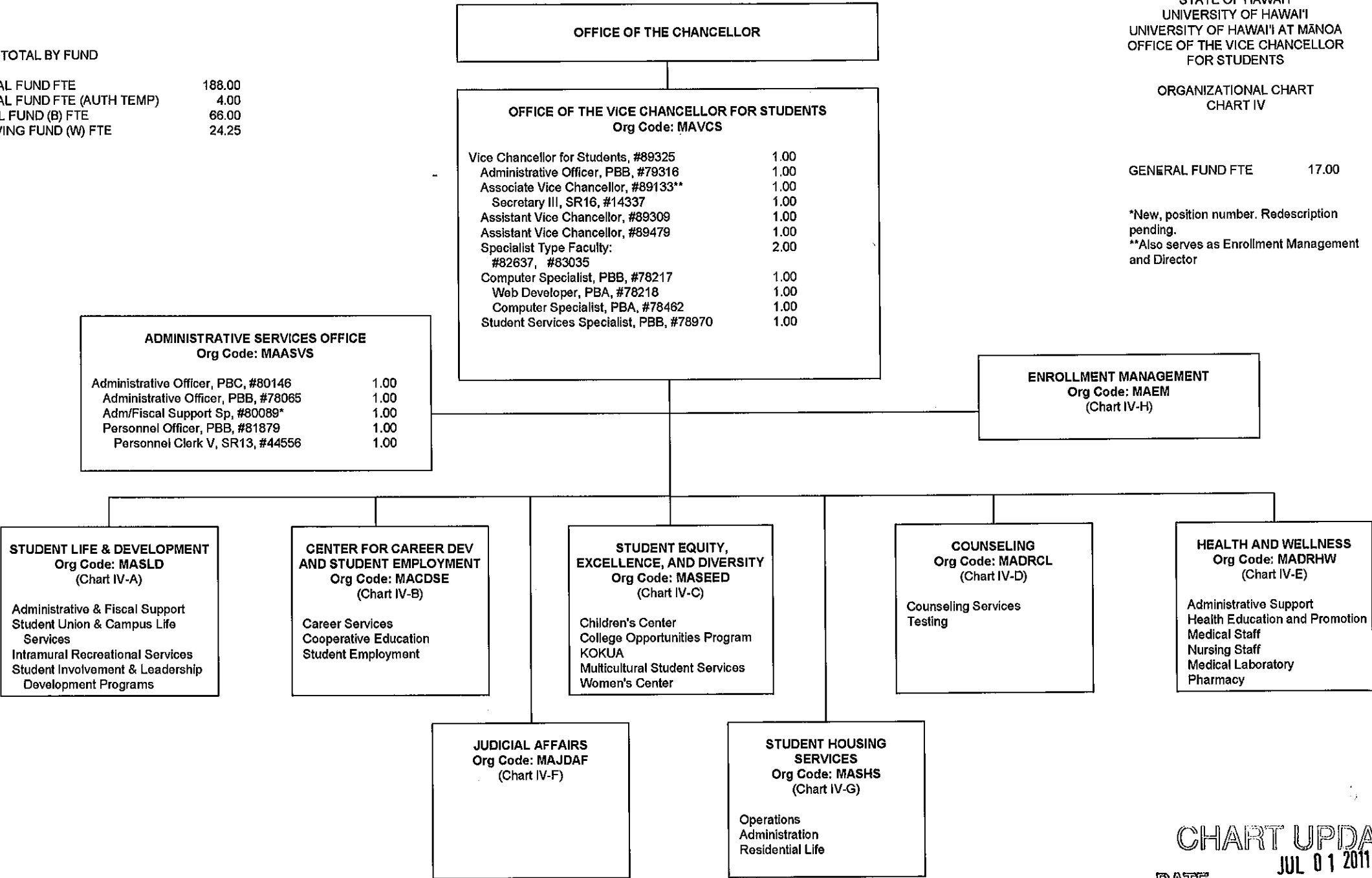


CHART UPDATED
JUL 01 2011
DATE _____

STATE OF HAWAII
UNIVERSITY OF HAWAII
UNIVERSITY OF HAWAII AT MANOA
OFFICE OF THE VICE CHANCELLOR
FOR STUDENTS
STUDENT LIFE & DEVELOPMENT

ORGANIZATIONAL CHART
CHART IV-A

GENERAL FUND FTE 11.00
SPECIAL FUND FTE (B) 21.00
REVOLVING FUND FTE (W) 6.00 ++

++ 1.00 FTE pending establishment due to
abolished Pos #81506
*** To be redescribed or reclassified

OFFICE OF THE CHANCELLOR

OFFICE OF THE VICE CHANCELLOR FOR STUDENTS

STUDENT LIFE & DEVELOPMENT
Org Code: MASLD

Director of Student Affairs (SLD), #89190***	1.00
Student Services Specialist, PBB, #77071	1.00
Student Services Specialist, PBA, #78447	1.00
Student Services Specialist, PBB, #79129	1.00

ADMINISTRATIVE & FISCAL SUPPORT
Org Code: MAASSL

Administrative Officer, PBB, #80163(B)	1.00 (B)
Administrative & Fiscal Support Specialist, PBA: #78450 (B), #79408 (B), #80649 (B)	3.00 (B)

STUDENT UNION &
CAMPUS LIFE SERVICES
Org Code: MASUSL

Specialist Type Faculty, #88328 (B)	1.00 (B)
Student Services Specialist, PBB, #80660(B)	1.00 (B)
Bldg Maintenance Worker, BC09, #28597(B)	1.00 (B)
Bldg & Grounds Utility Worker, BC05, #44085 (B), #44109 (B), #45379 (B)	3.00 (B)
Student Services Specialist, PBA, #78831(B)	1.00 (B)
Janitor II, BC02, #25329 (B), #25392 (B), #44089 (B), #46560 (B)	4.00 (B)
Student Services Specialist, PBB, #78991(B)	1.00 (B)
Student Services Specialist, PBA: #80631 (B), #80942 (B)	2.00 (B)
Specialist Type Faculty: #88765 (B)	1.00 (B)

INTRAMURAL RECREATIONAL
SERVICES
Org Code: MAIRSL

Specialist Type Faculty, #85083	1.00
Specialist Type Faculty: #83512	1.00
Office Assistant III, SR08, #26460	1.00
Student Services Specialist, PBB, #80025(B)	1.00 (B)
Student Services Specialist, PBA, #79313(B)	1.00 (B)

STUDENT INVOLVEMENT &
LEADERSHIP DEVELOPMENT PROGRAMS
Org Code: MASISL

Specialist Type Faculty, #83705	1.00
Specialist Type Faculty: #70078, #82597, #82864	3.00
Student Services Specialist, PBB, #81510 (W)	1.00 (W)
Specialist Type Faculty, #70084 (W)	1.00 (W)
Student Services Specialist, PBB, #81137 (W), #81486 (W)	2.00 (W)
Specialist Type Faculty, #88334 (W)	1.00 (W)

CHART UPDATED
DATE JUL 01 2011

STATE OF HAWAII
 UNIVERSITY OF HAWAII
 UNIVERSITY OF HAWAII AT MANOA
 OFFICE OF THE VICE CHANCELLOR
 FOR STUDENTS
 CENTER FOR CAREER
 DEVELOPMENT AND STUDENT
 EMPLOYMENT

ORGANIZATIONAL CHART
 CHART IV-B

GENERAL FUND FTE 15.00*
 GENERAL FUND FTE (AUTH TEMP) 1.00

*Abolished position #78605 & #88326 (2.00 FTE)

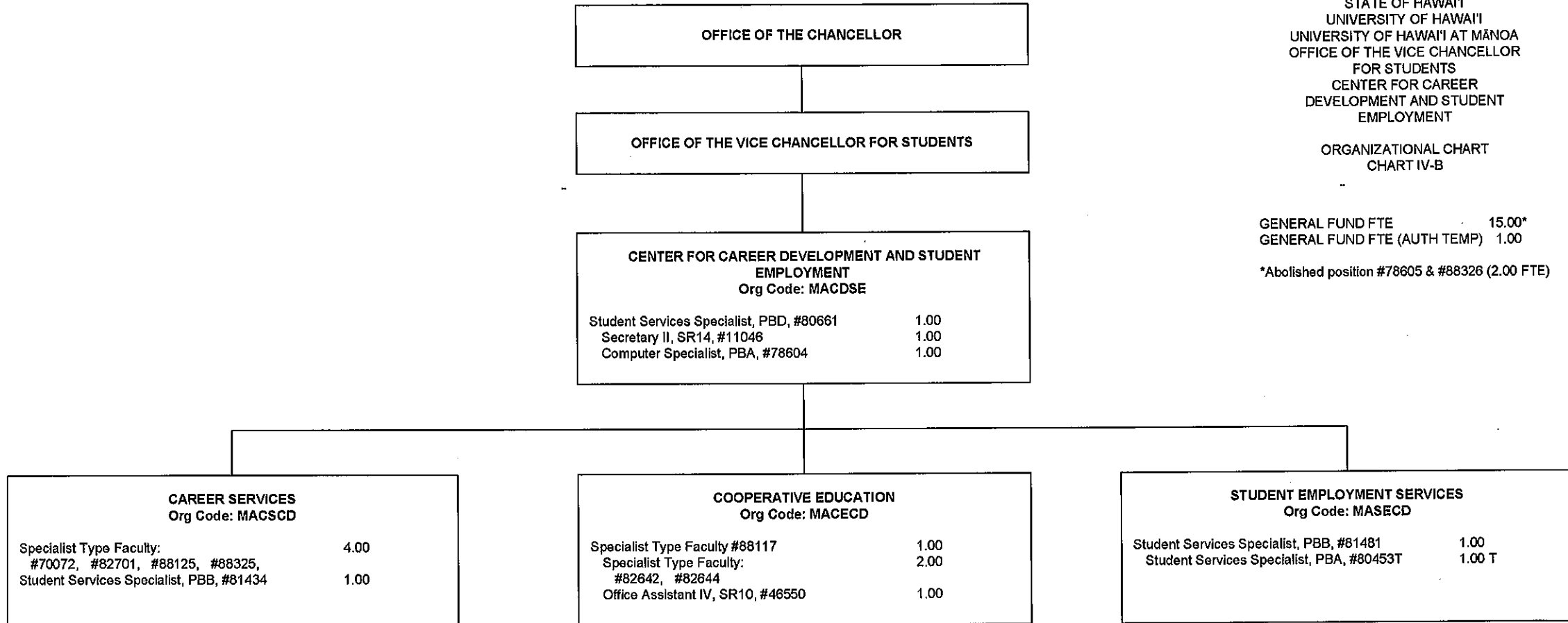


CHART UPDATED
 DATE JUL 01 2011

OFFICE OF THE CHANCELLOR

OFFICE OF THE VICE CHANCELLOR FOR STUDENTS

STUDENT EQUITY, EXCELLENCE AND DIVERSITY
Org Code: MASEED

Director of Student Affairs (SEED), #89298	1.00
Administrative Officer, PBB: #78525, #81088	2.00
Specialist Type Faculty: #70068, #70069, #70070, #70071, #82594	5.00
Educational Specialist, PBB: #81063, #81904	2.00
Student Services Specialist, PBB, #78524	1.00
Office Assistant III, SR08, #43052	1.00

CHILDREN'S CENTER
Org Code: MACC

Early Childhood Specialist, PBB, #80232	1.00
Administrative Officer, PBA, #80739 (W)	1.00 (W)
Early Childhood Specialist, PBB: #80029, #80109,	2.00
#80234T, #80455T,	2.00 T
#80541 (W), #80611 (W)	2.00 (W)
Early Childhood Specialist, PBA: #78917, #80233,	2.00
#80424T,	1.00 T
#80588 (W)	1.00 (W)

COLLEGE OPPORTUNITIES PROGRAM
Org Code: MACOP

Specialist Type Faculty, #83548	1.00
Student Services Specialist, PBB, #80606	1.00
Student Services Specialist, PBA, #78538	1.00
Office Assistant IV, SR10, #23086	1.00

STATE OF HAWAII
UNIVERSITY OF HAWAII
UNIVERSITY OF HAWAII AT MANOA
OFFICE OF THE VICE CHANCELLOR
FOR STUDENTS
STUDENT EQUITY, EXCELLENCE AND
DIVERSITY

ORGANIZATIONAL CHART
CHART IV-C

GENERAL FUND FTE	37.00*
GENERAL FUND FTE (AUTH TEMP)	3.00
REVOLVING FUND FTE (W)	4.00

*Abolished position #70073 (1.00 FTE)

KOKUA
Org Code: MAKOKU

Educational Specialist, PBC, #80666	1.00
Administrative Officer, PBA, #77032	1.00
Educational Specialist, PBB: #78261, #78262, #80608, #80636, #81566	5.00
Educational Specialist, PBA, #81102	1.00

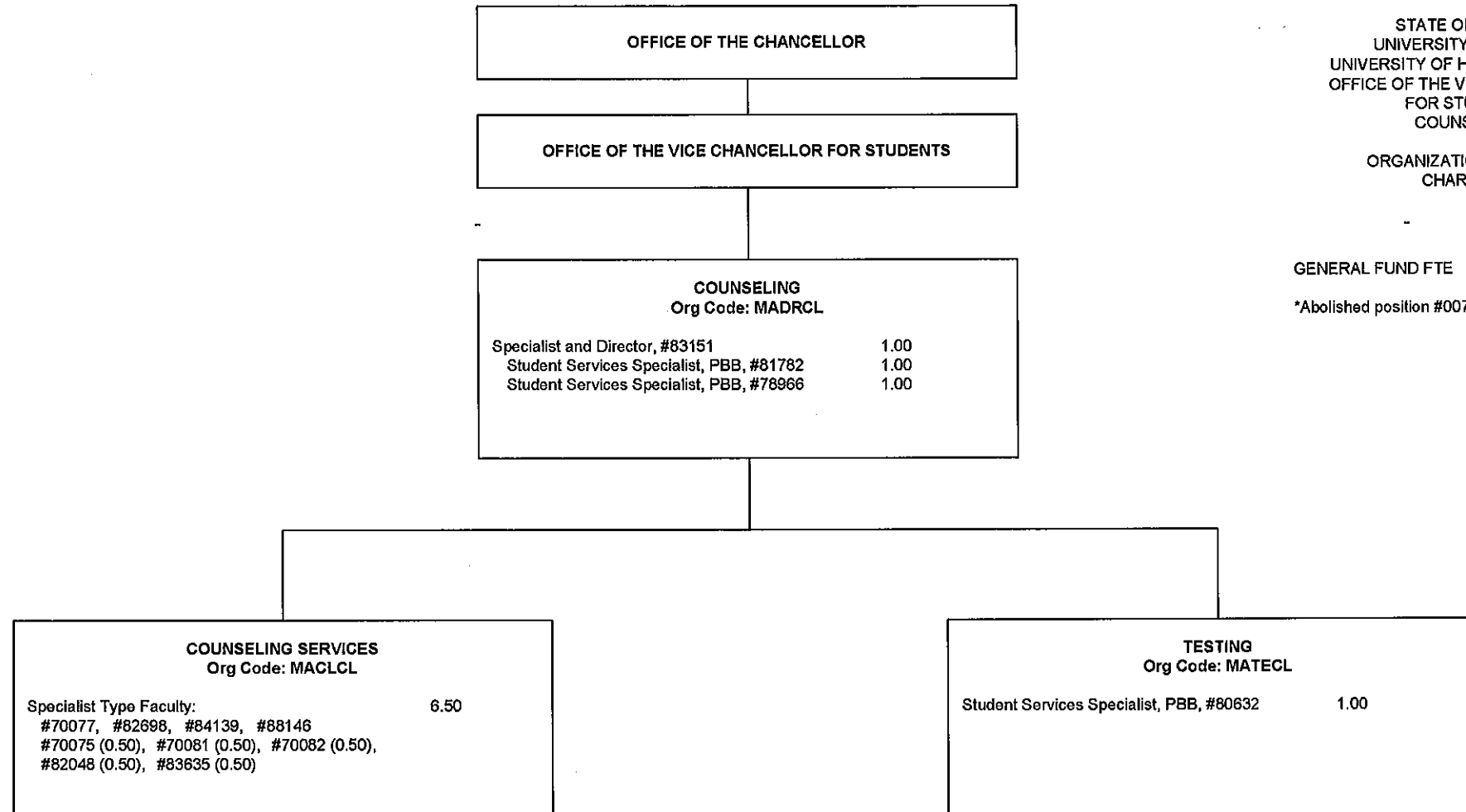
OFFICE OF MULTICULTURAL STUDENT SERVICES
Org Code: MAMULT

Educational Specialist, PBB, #80517	1.00
Student Services Specialist, PBA: #81799, #81801	2.00

WOMEN'S CENTER
Org Code: MAWC

Specialist Type Faculty: #70074, #84581, #88333	3.00
Student Services Specialist, PBB, #78526	1.00

CHART UPDATED
DATE JUL 01 2011



STATE OF HAWAII
UNIVERSITY OF HAWAII
UNIVERSITY OF HAWAII AT MĀNOA
OFFICE OF THE VICE CHANCELLOR
FOR STUDENTS
COUNSELING

ORGANIZATIONAL CHART
CHART IV-D

GENERAL FUND FTE 11.50*

*Abolished position #00746 (1.00 FTE)

CHART UPDATED
DATE JUL 01 2011

STATE OF HAWAII
UNIVERSITY OF HAWAII
UNIVERSITY OF HAWAII AT MANOA
OFFICE OF THE VICE CHANCELLOR
FOR STUDENTS
HEALTH AND WELLNESS
ORGANIZATIONAL CHART
CHART IV-E

GENERAL FUND FTE 8.50
REVOLVING FUND FTE (W) 10.25

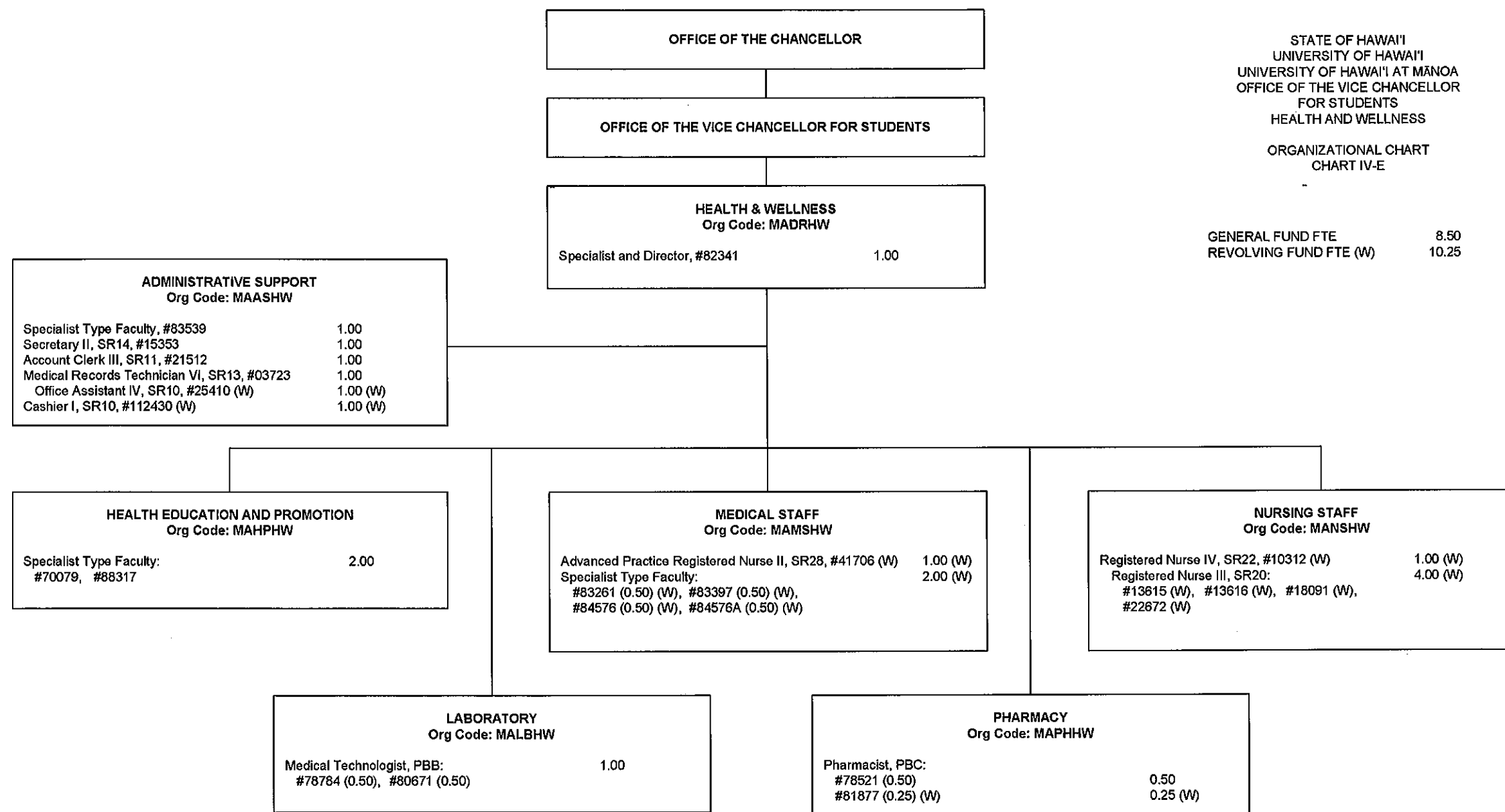


CHART UPDATED
DATE JUL 01 2011

STATE OF HAWAII
 UNIVERSITY OF HAWAII
 UNIVERSITY OF HAWAII AT MANOA
 OFFICE OF THE VICE CHANCELLOR
 FOR STUDENTS
 JUDICIAL AFFAIRS

ORGANIZATIONAL CHART
 CHART IV-F

GENERAL FUND FTE 2.00

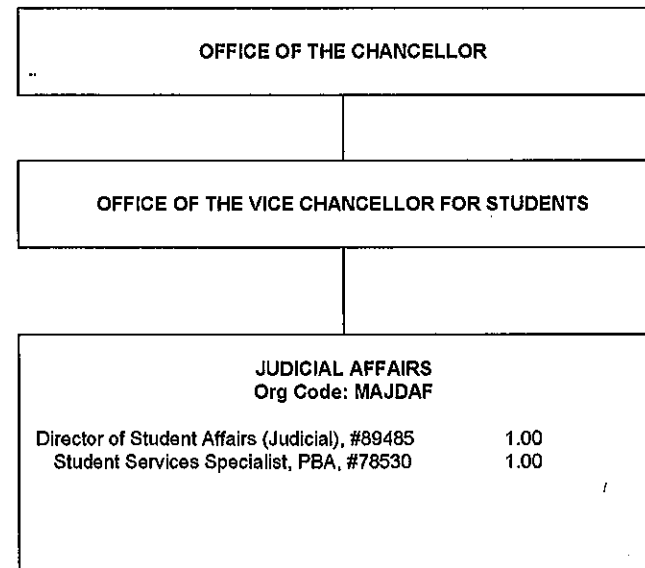


CHART UPDATED
 DATE JUL 01 2011

STATE OF HAWAII
UNIVERSITY OF HAWAII
UNIVERSITY OF HAWAII AT MĀNOA
OFFICE OF THE VICE CHANCELLOR
FOR STUDENTS
STUDENT HOUSING SERVICES

ORGANIZATIONAL CHART
CHART IV-G

SPECIAL FUND FTE (B) 45.00
GENERAL FUND FTE 6.00

OFFICE OF THE CHANCELLOR

OFFICE OF THE VICE CHANCELLOR FOR STUDENTS

STUDENT HOUSING SERVICES
Org Code: MASHS

Director of Student Housing, #89007 (B) 1.00 (B)
Secretary II, SR14, #00743 (B) 1.00 (B)

OPERATIONS
Org Code: MAOPSH

Auxiliary Services Manager, PBB, #80629 (B) 1.00 (B)
Auxiliary & Facilities Services Officer, PBA, #78141 (B) 1.00 (B)
Office Assistant III, SR08:
#31244 (B), #24249 (B) 2.00 (B)

MAINTENANCE STAFF:
Security Officer I, SR14, #900548 (B)* 1.00 (B)
Building Maintenance Worker I, BC09:
#031242 (B), #023493 (B), #110585 (B), #013578 (B),
#031245 (B) 5.00 (B)
#900513, #900514 2.00

GROUNDS STAFF:
Groundskeeper II, WS02, #24251 (B) 1.00 (B)
Groundskeeper I, BC02:
#31243 (B), #31246 (B) 2.00 (B)

PROJECT & PLANT MANAGEMENT SUPPORT:
Registered Architect, PBB, #77005 (B)* 1.00 (B)
Environmental Safety Specialist, PBA, #81680 (B)² 1.00 (B)

ADMINISTRATION
Org Code: MAASSH

Administrative Officer, PBB, #79170 (B)* 1.00 (B)
FISCAL:
Administrative Officer, PBB, #80193 (B) 1.00 (B)
Adm & Fiscal Supp Sp, PBA, #77029 (B) 1.00 (B)
Cashier I, SR10, #28336 (B) 1.00 (B)
Office Assistant IV, SR10, #18701 (B) 1.00 (B)

ASSIGNMENTS:
Student Services Specialist, PBB, #81612 (B) 1.00 (B)
Student Services Specialist, PBA, #78732 1.00
Student Services Specialist, PBA, #79330 (B) 1.00 (B)
Office Assistant V, SR12, #34981 (B) 1.00 (B)
Office Assistant III, SR08:
#18115 (B), #15287 (B) 2.00 (B)

CONFERENCES:

PERSONNEL:
Personnel Officer, PBB, #81103 (B) 1.00 (B)
Personnel Officer, PBA, #78729 1.00

INFORMATION TECHNOLOGY:
Computer Specialist, PBB:
#81361 (B), #78311 (B) 2.00 (B)

RESIDENTIAL LIFE
Org Code: MARLSH

Student Services Specialist, PBB, #80630 (B) 1.00 (B)
Clerk Stenographer II, SR09, #24250 (B)** 1.00 (B)
Office Assistant III, SR08:
#28545 (B), #23582 (B) 2.00 (B)

TRAINING & LEADERSHIP:
Student Services Specialist, PBB, #81611 (B) 1.00 (B)

FAMILY RELATIONS & OFF-CAMPUS HOUSING:

RESIDENTIAL AREAS:
Student Services Specialist, PBB:
#80594 (B), #80597 (B) 2.00 (B)
Student Housing Coordinator, PBB:
#80598 (B)**, #80924 (B)** 2.00 (B)

HALL STAFF:
Student Services Specialist, PBA:
#78728 (B), #78959 (B), #78960 (B), #78961 (B), 6.00 (B)
#78962 (B), #80595 (B)
#78730, #78731 2.00

* Pending establishment
** To be redescribed

Position 99003F authorized general fund
position to be allocated.

¹ Supervised by Facilities Management
² Supervised by Environmental Health & Safety

CHART UPDATED
JUL 01 2011
DATE

STATE OF HAWAII
UNIVERSITY OF HAWAII
UNIVERSITY OF HAWAII AT MANOA
OFFICE OF THE VICE CHANCELLOR
FOR STUDENTS
ENROLLMENT MANAGEMENT

ORGANIZATIONAL CHART
CHART IV-H

GENERAL FUND FTE 80.00****
REVOLVING FUND FTE (W) 4.00

****Abolished position numbers 14863, 15265,
17599, 17600, and 22321
(General Funds 5.00)

OFFICE OF THE CHANCELLOR

OFFICE OF THE VICE CHANCELLOR FOR STUDENTS

ENROLLMENT MANAGEMENT
Org Code: MAEM

Associate Vice Chancellor, #89133***
Secretary II, SR14*
Administrative Officer, PBB, #78674 1.00
Account Clerk III, SR-11*

INFORMATION AND COMPUTER SERVICES
Org Code: MAITEM

Computer Specialist, PBB, #80018** 1.00
Computer Specialist, PBB:
#78228**, #80017, #81134 3.00

OFFICE OF ADMISSIONS
Org Code: MAOAEM

Student Services Specialist, PBC, #81154** 1.00
Secretary II, SR14, #14866 1.00
Clerk Supervisor III, SR14, #00748 1.00
Office Assistant IV, SR10:
#00772, #12842, #13495, #13496, #18009, #26538,
#900015 7.00
Office Assistant III, SR8, #900016 1.00
Student Services Specialist, PBB:
#78658, #80626, #81071, #81414, #81734 5.00
Student Services Specialist, PBB, #80625 1.00
Office Assistant IV, SR10, #11496 1.00
Student Services Specialist, PBB, #80530 1.00
Student Services Specialist, PBB, #78660 1.00
Student Services Specialist, PBA:
#77518, #77519, #77520, #77521, #77885, #78659 6.00
Student Services Specialist, PBA:
#78105, #78192 2.00
Student Services Specialist, PBA, #78406 1.00
Office Assistant IV, SR10:
#15501, #40004, #40005, #900159 4.00
Office Assistant III, SR8, #40003 1.00

Student Services Specialist, PBC, #80463 1.00
Student Services Specialist, PBB:
#78702, #78716, #80096 3.00
Student Services Specialist, PBA:
#78703, #78825, #78826, #78827 4.00

OFFICE OF THE REGISTRAR
Org Code: MARGEM

Student Services Specialist, PBC, #81614 1.00

Student Services Specialist, PBB, #80658 1.00

Student Services Specialist, PBA:
#78405, #78657, 2.00
#79064 (W) 1.00 (W)

Student Services Specialist, PBA, #78828 1.00
Office Assistant IV, SR10:
#00750, #14864, #15502, #21430, #40006 5.00
#14865(W) 1.00 (W)
Office Assistant III, SR8:
#13494 (W), #26539 (W) 2.00 (W)

Scheduler, SR20, #05837** 1.00
Office Assistant, IV, SR10, #13959** 1.00

FINANCIAL AID SERVICES
Org Code: MAFAEM

Student Services Specialist, PBC, #77250 1.00
Secretary II, SR14, #05737 1.00

Student Services Specialist, PBB, #81913 1.00

Student Services Specialist, PBB:
#78225, #78226, #78227, #80922, #81151 7.00
#81607, #81609

Student Services Specialist, PBA: 6.00
#78760, #78761, #78224, #78951, #81606,
#81608

* New position approved in 2/17/05 reorg; position number to be determined
** Position to be reclassified/re-described
*** Associate Vice Chancellor position #89133 position count reflected on chart IV.

CHART UPDATED
DATE JUL 01 2011