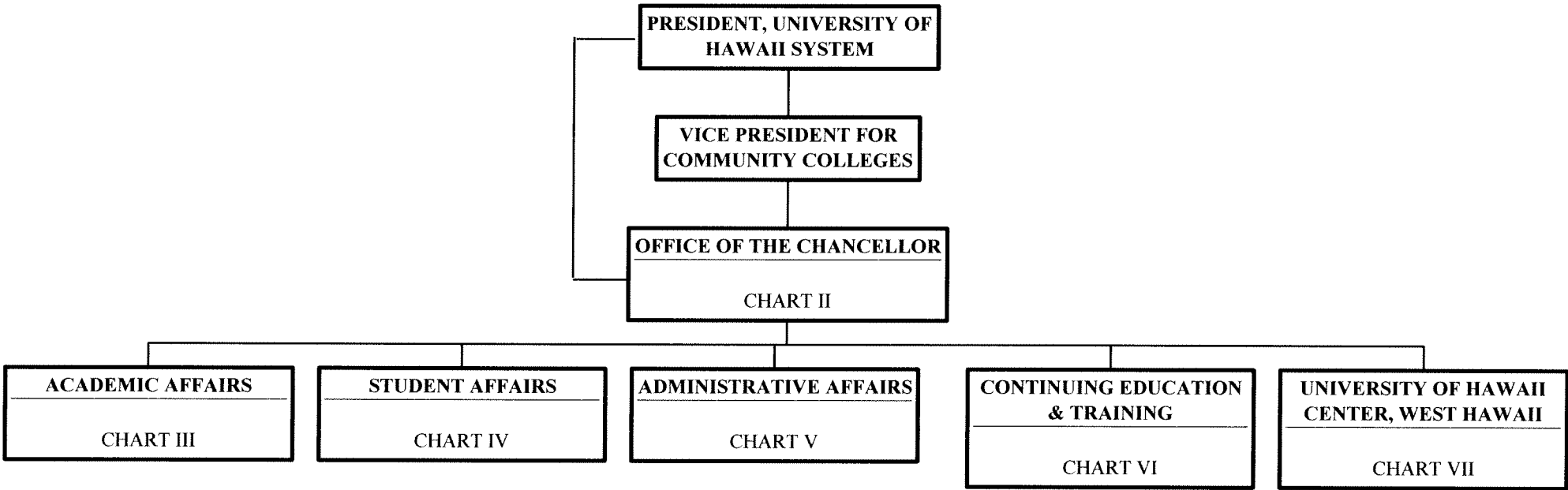


Organization Chart

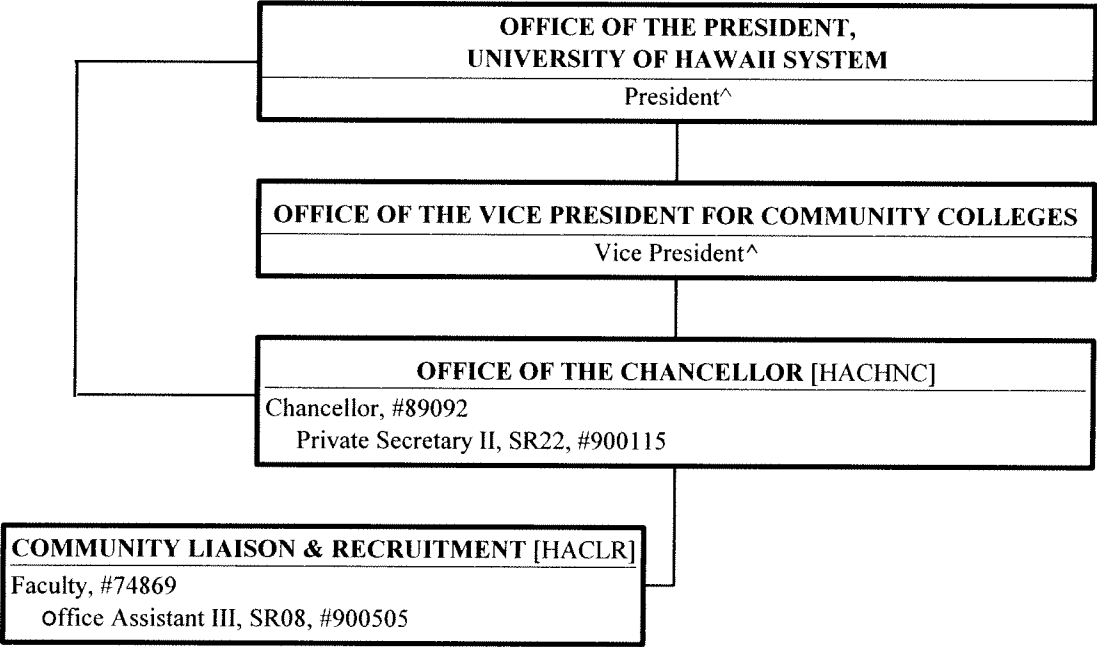
Chart I



	<u>Perm</u>	<u>Temp</u>
General Fund	220.00	5.00
(B) Special Funds	1.00	

Position Organization Chart

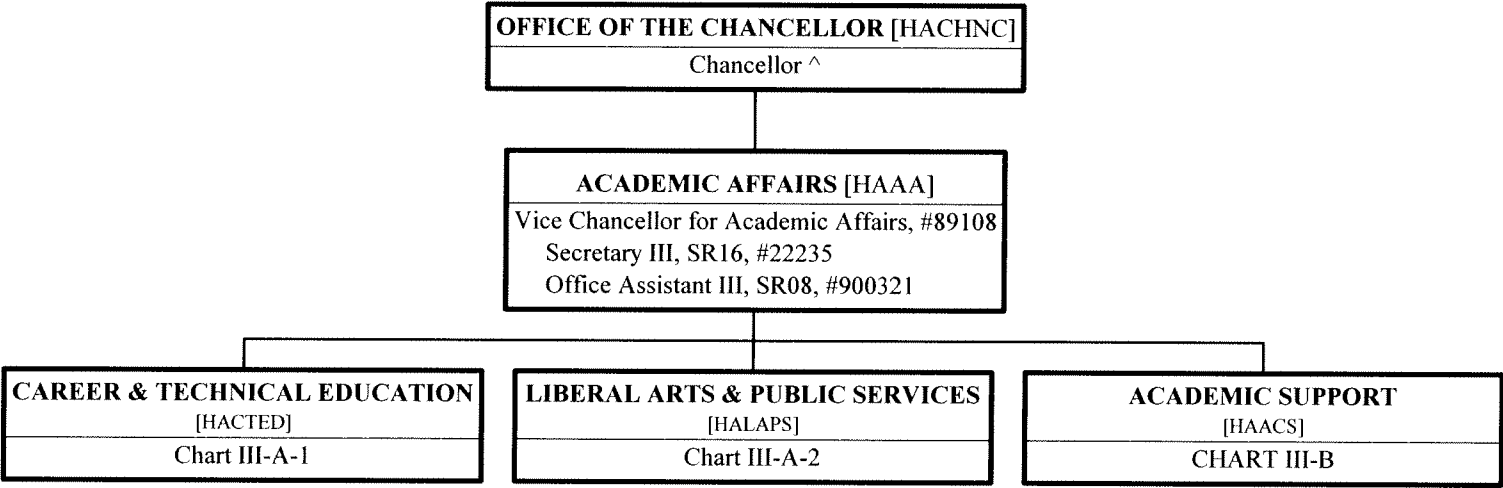
Chart II



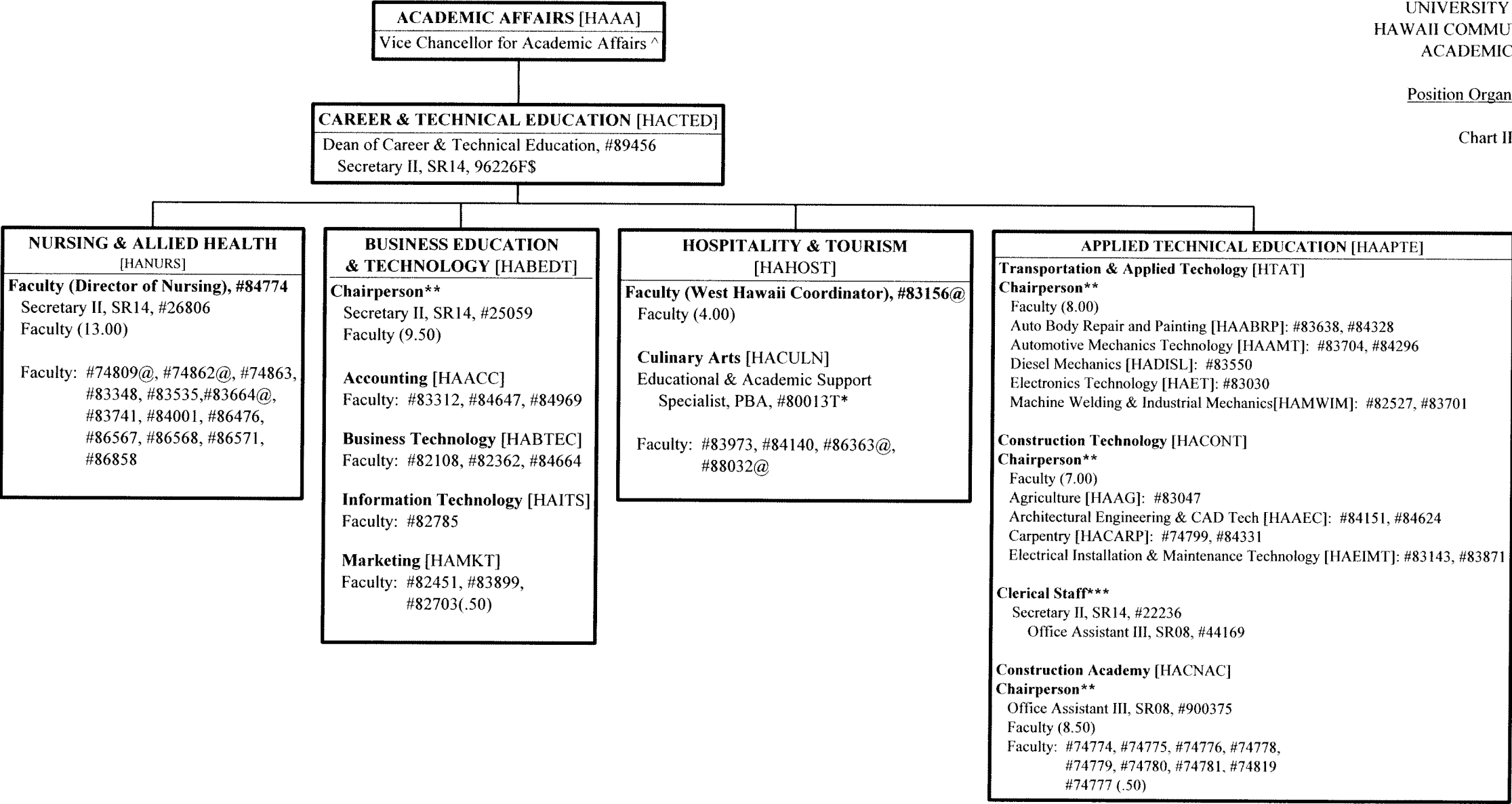
^ Excluded from position count this chart  
\$ To be established

Position Organization Chart

Chart III



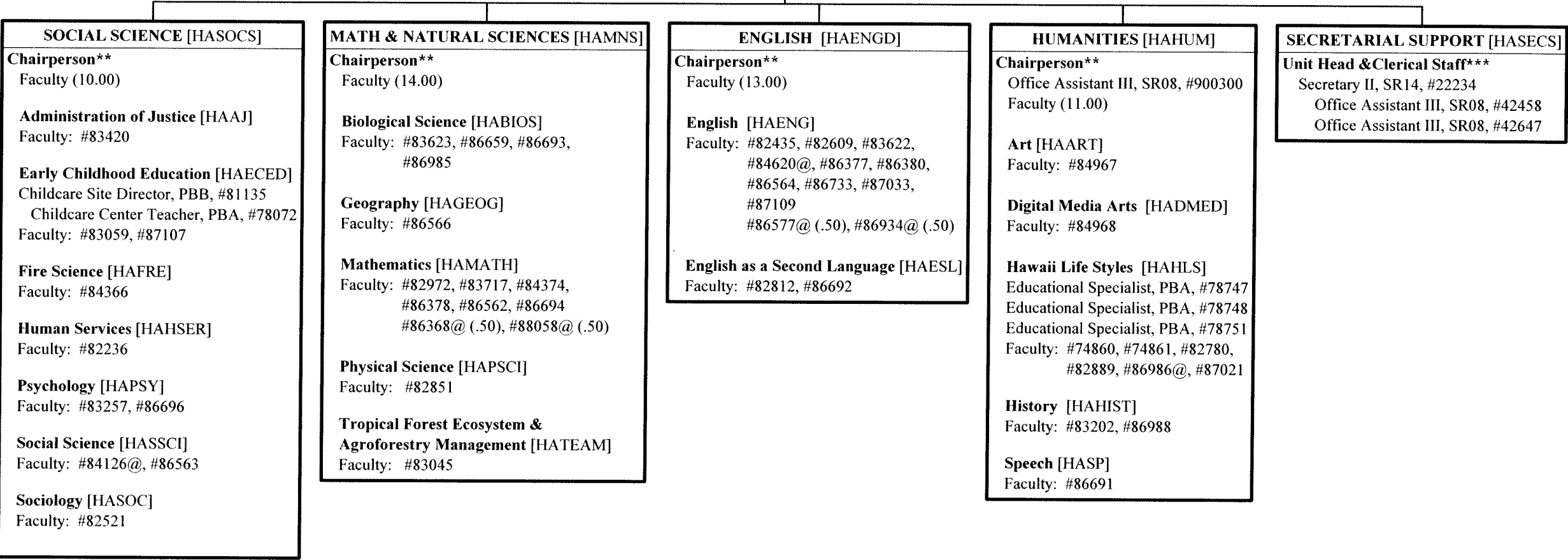
^ Excluded from position count this chart



^ Excluded from position count this chart  
\* Temporary Position  
\*\* Chairperson is appointed from among faculty positions within the department.  
\*\*\* Clerical staff serve all units in the division but each position has only one immediate supervisor.  
@Position located at University of Hawaii Center, West Hawaii  
\$ To be established

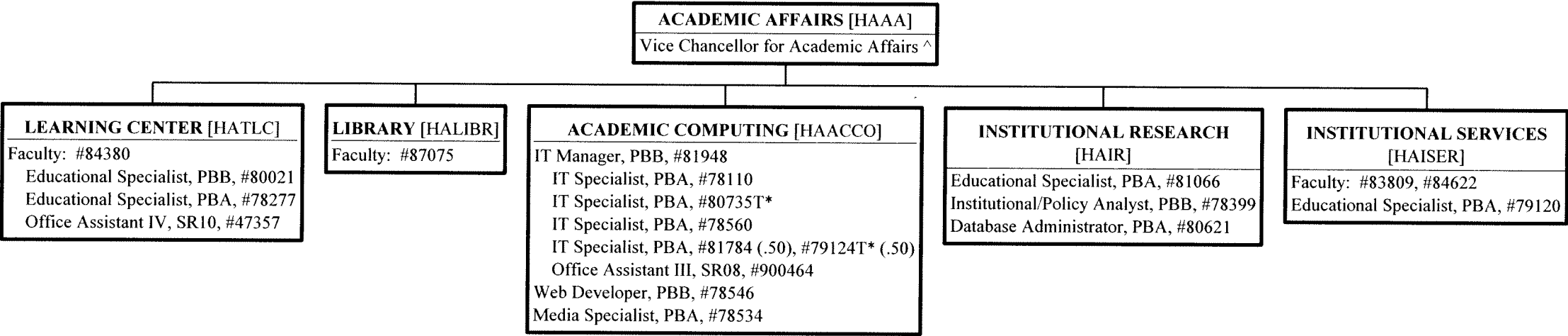
ACADEMIC AFFAIRS [HAAA]  
Vice Chancellor for Academic Affairs^

LIBERAL ARTS & PUBLIC SERVICES  
[HALAPS]  
Dean of Liberal Arts & Public Services, #89453  
Secretary II, SR14, 96225F\$



Position Organization Chart

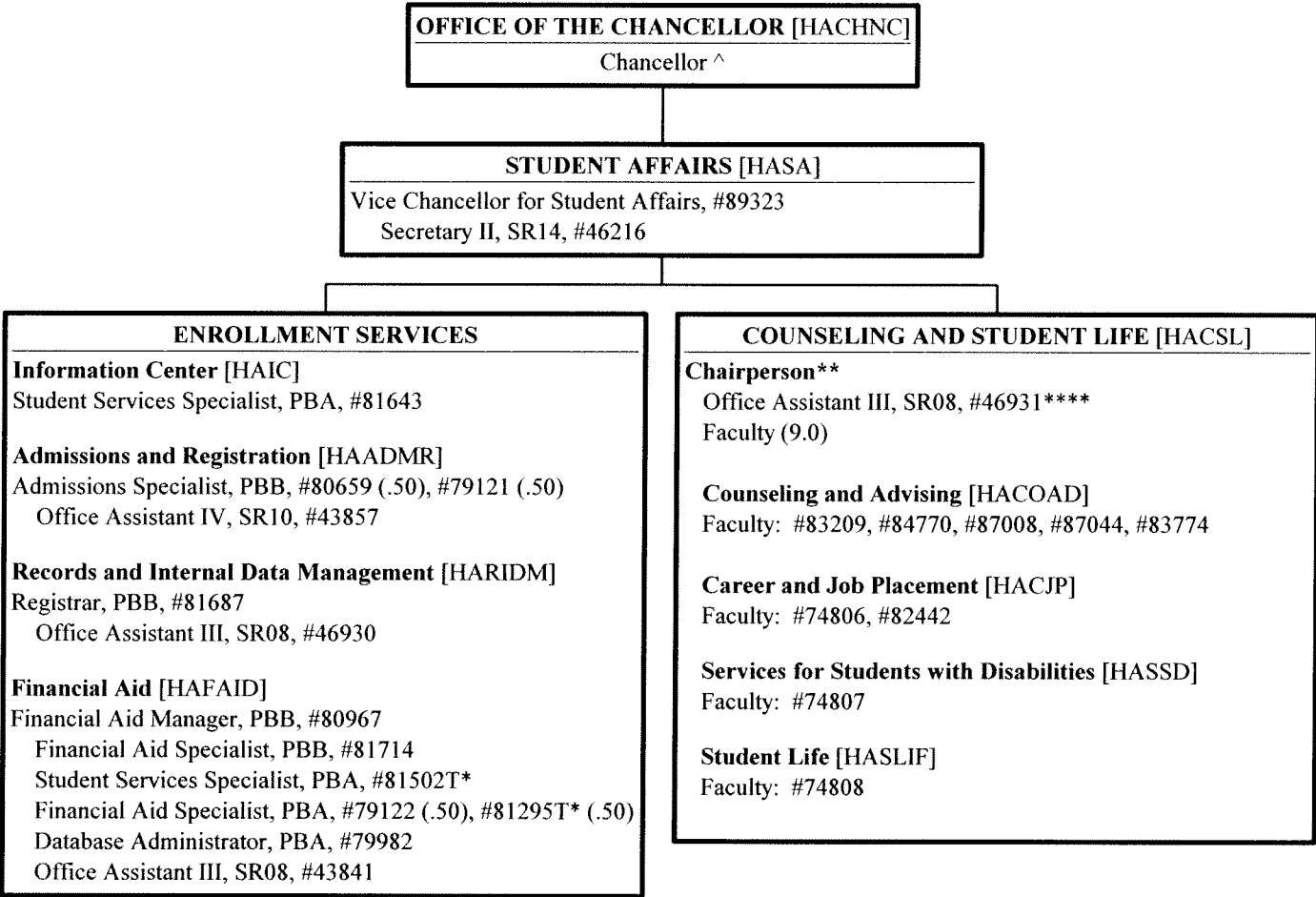
Chart III-B



^ Excluded from position count this chart  
\* Temporary Position

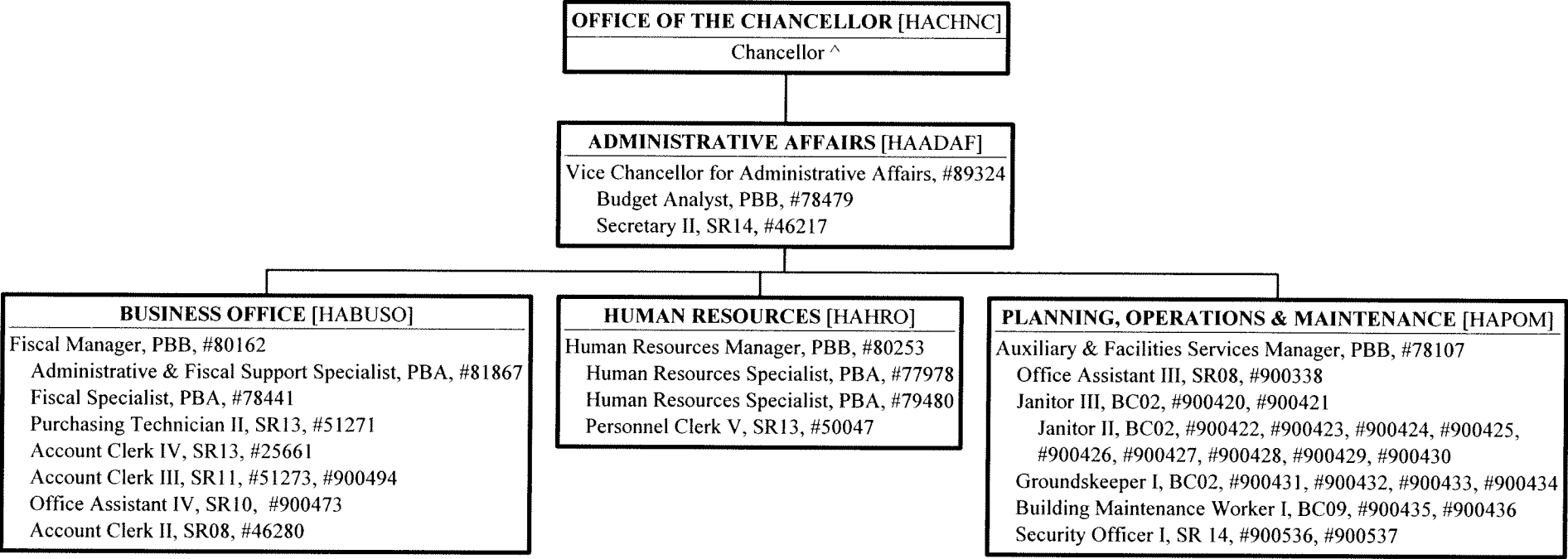
Position Organization Chart

Chart IV



Position Organization Chart

Chart V



^ Excluded from position count this chart  
\$ To be established

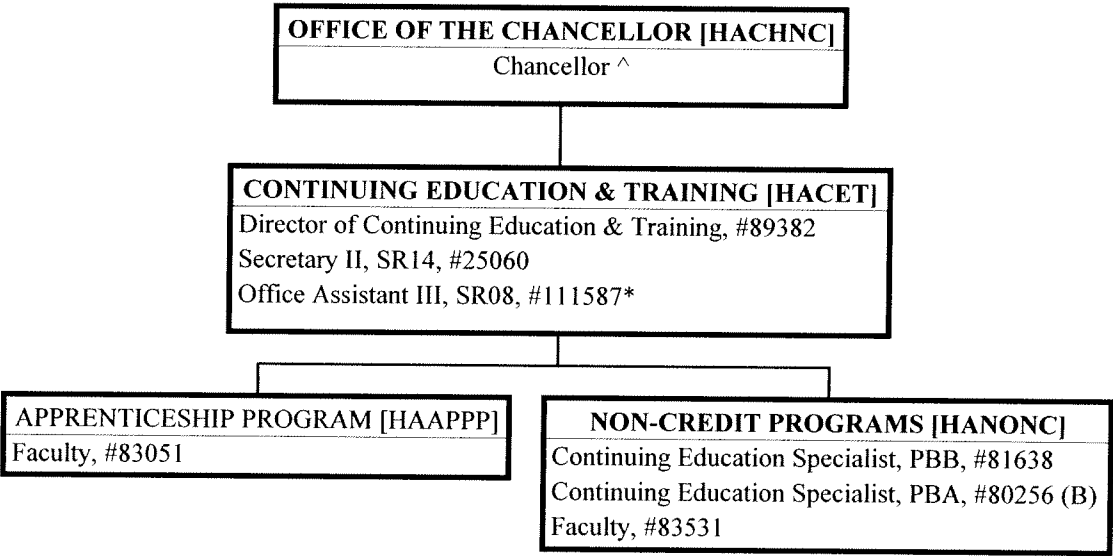


Chart Title

STATE OF HAWAII  
UNIVERSITY OF HAWAII  
HAWAII COMMUNITY COLLEGE  
CONTINUING EDUCATION & TRAINING

Position Organization Chart

Chart VI



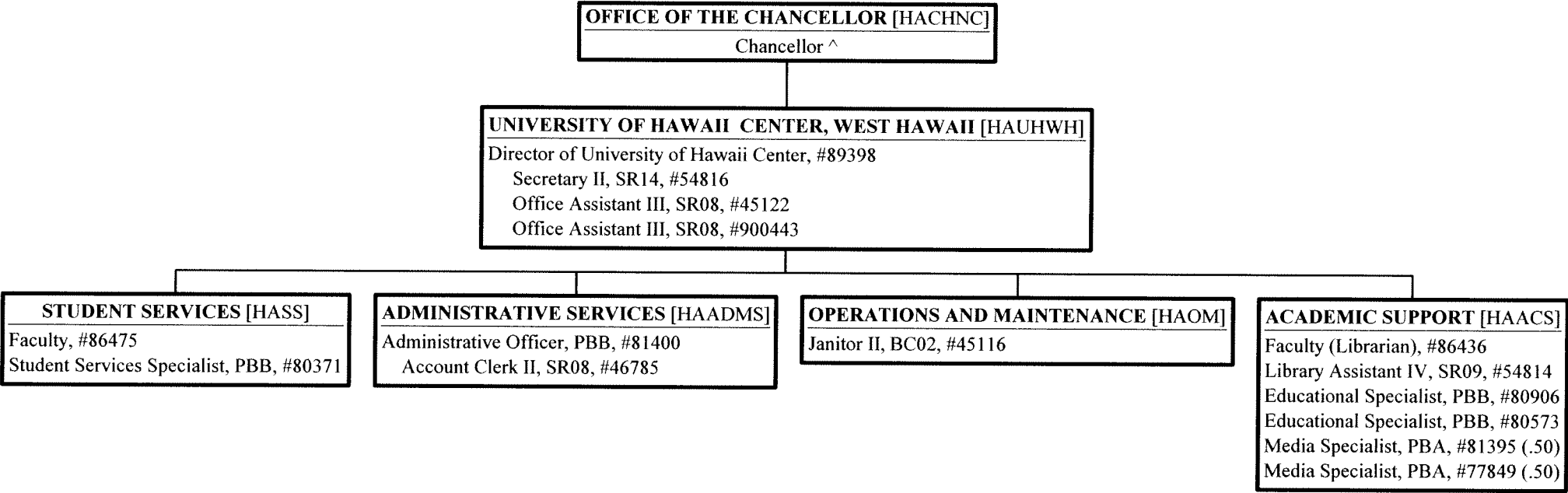
^ Excluded from position count this chart  
\* Temporary Position

	Perm	Temp
General Fund	5.00	1.00
(B) Special Funds	1.00	

STATE OF HAWAII  
UNIVERSITY OF HAWAII  
HAWAII COMMUNITY COLLEGE  
UNIVERSITY OF HAWAII CENTER, WEST HAWAII

Position Organization Chart

Chart VII



^ Excluded from position count this chart  
\$ To be established