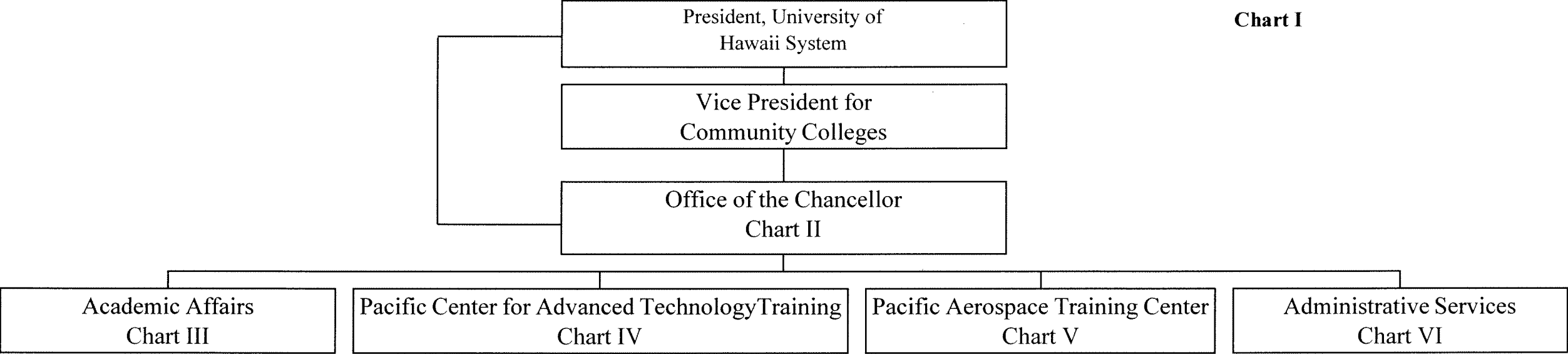


STATE OF HAWAII  
UNIVERSITY OF HAWAII  
COMMUNITY COLLEGES  
HONOLULU COMMUNITY COLLEGE

Organization Chart

Chart I

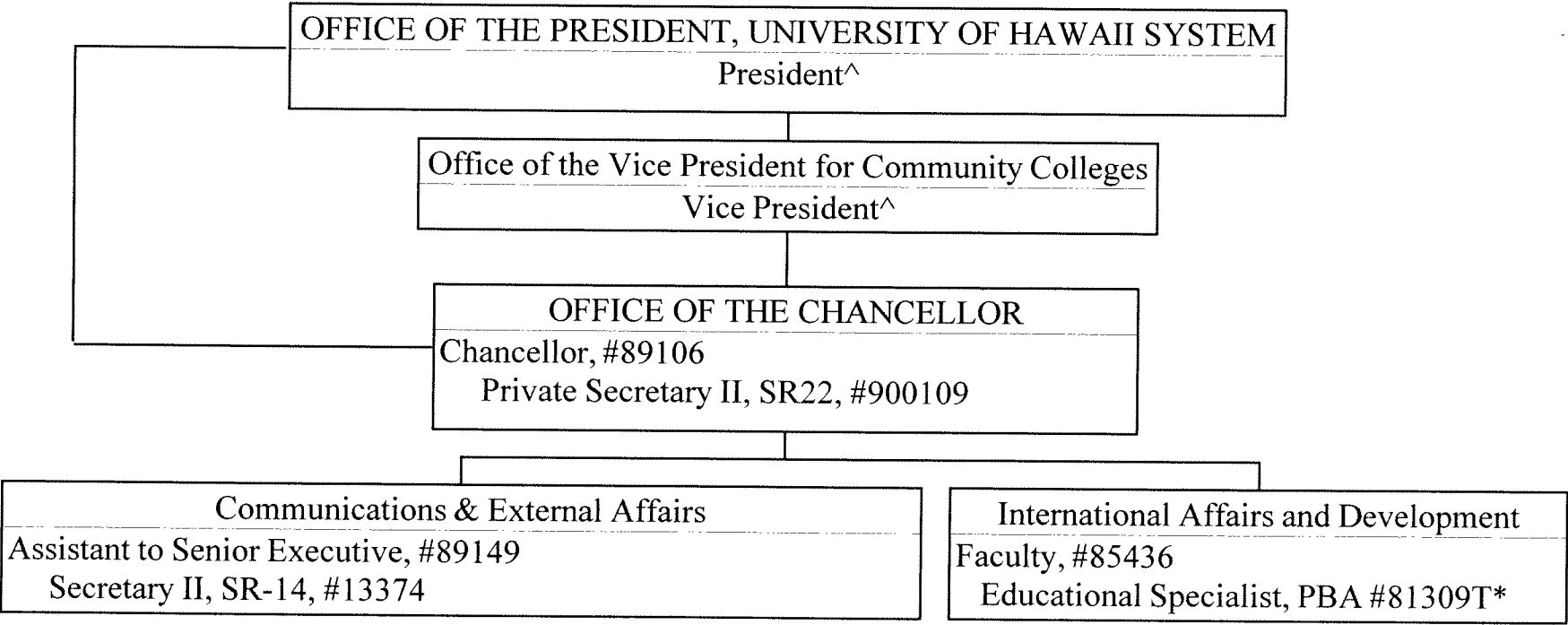


	<u>Perm</u>	<u>Temp</u>
General Fund	323.00	6.00
( B) Special Fund	19.00	

STATE OF HAWAII  
UNIVERSITY OF HAWAII  
COMMUNITY COLLEGES  
HONOLULU COMMUNITY COLLEGE  
OFFICE OF THE CHANCELLOR

Organization Chart

Chart II



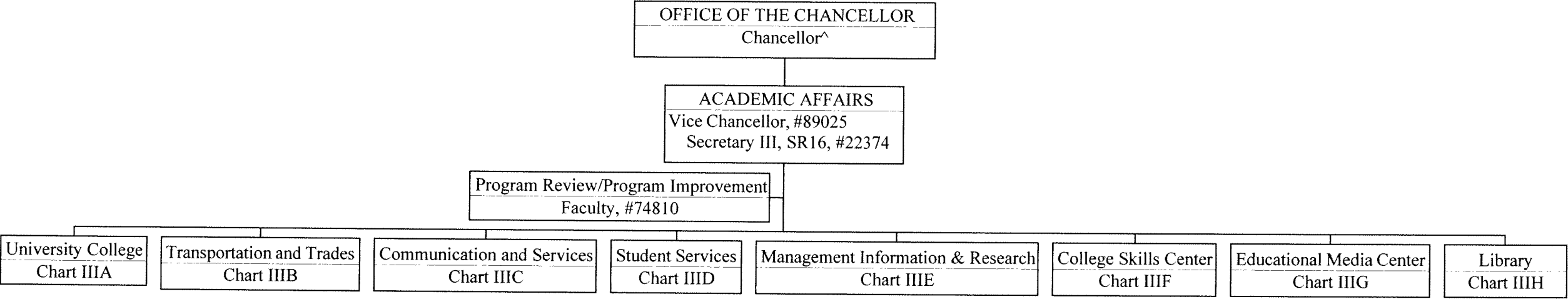
^ Excluded from position count this chart  
\* Temporary Position

	Perm	Temp
General Fund	5.00	1.00

STATE OF HAWAII  
UNIVERSITY OF HAWAII  
COMMUNITY COLLEGES  
HONOLULU COMMUNITY COLLEGE  
ACADEMIC AFFAIRS

Organization Chart

Chart III

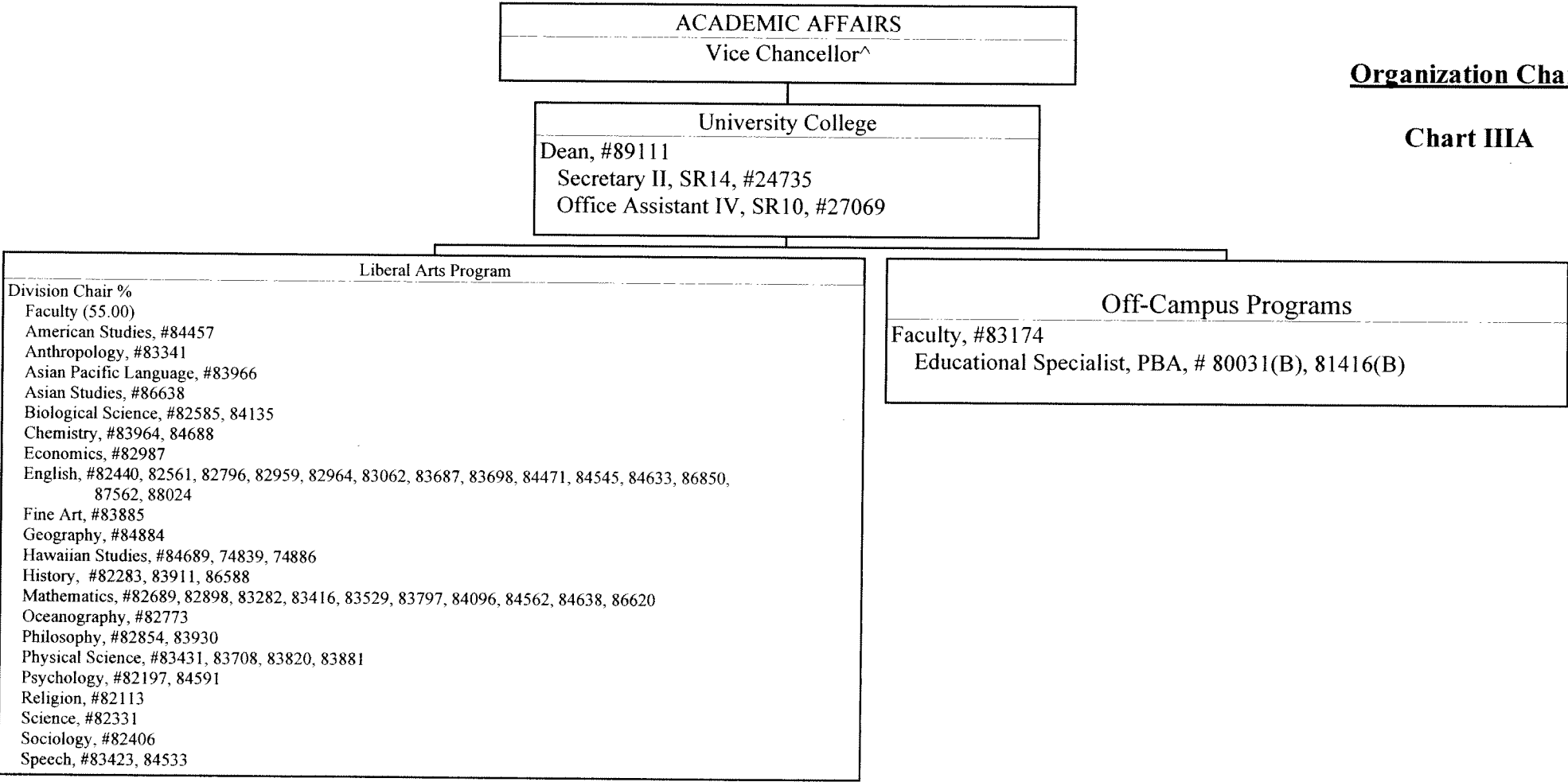


^ Excluded from position count this chart

STATE OF HAWAII  
UNIVERSITY OF HAWAII  
COMMUNITY COLLEGES  
HONOLULU COMMUNITY COLLEGE  
ACADEMIC AFFAIRS

Organization Chart

Chart IIIA

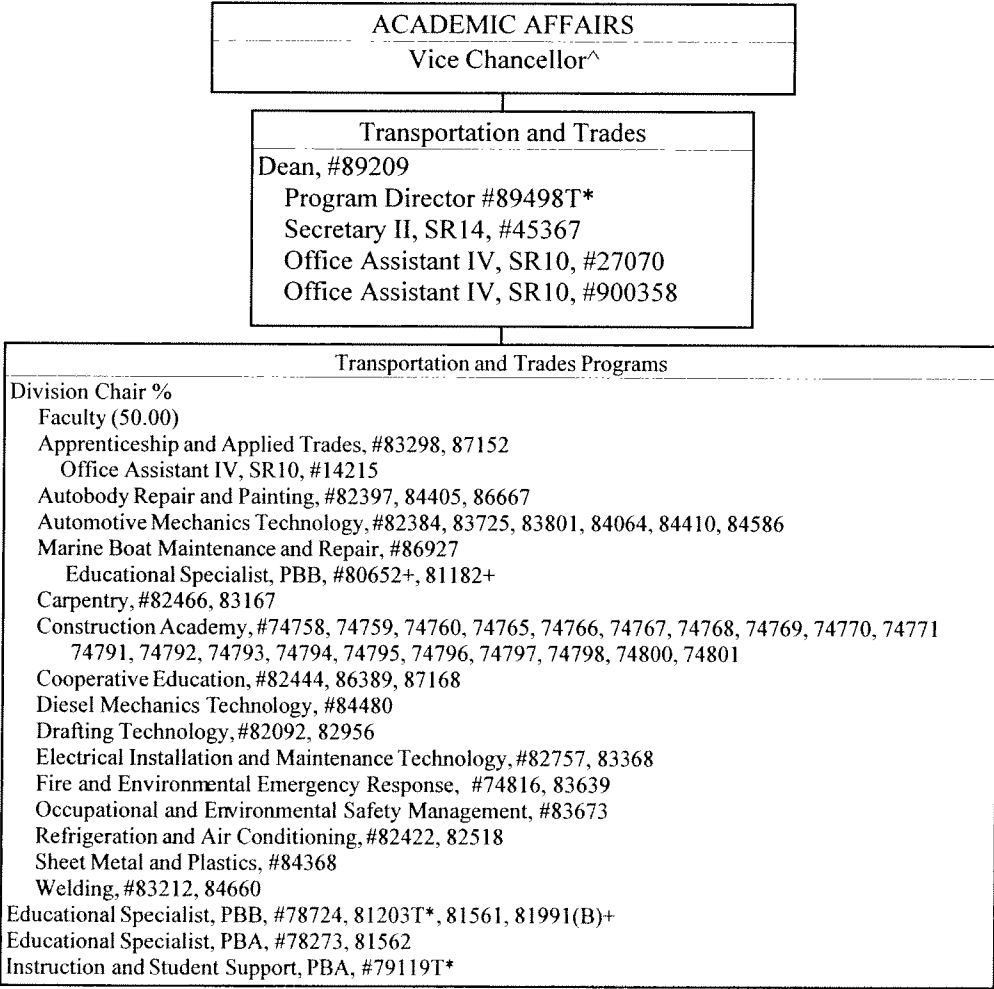


^ Excluded from position count this chart

% Division Chair is appointed from any faculty position in the College.  
Multiple Division Chairs may be appointed but each position in the  
Division has only one immediate supervisor.

	<u>Perm</u>
General Fund	59.00
(B) Special Fund	2.00

STATE OF HAWAII  
UNIVERSITY OF HAWAII  
COMMUNITY COLLEGES  
HONOLULU COMMUNITY COLLEGE  
ACADEMIC AFFAIRS



Organization Chart

Chart IIB

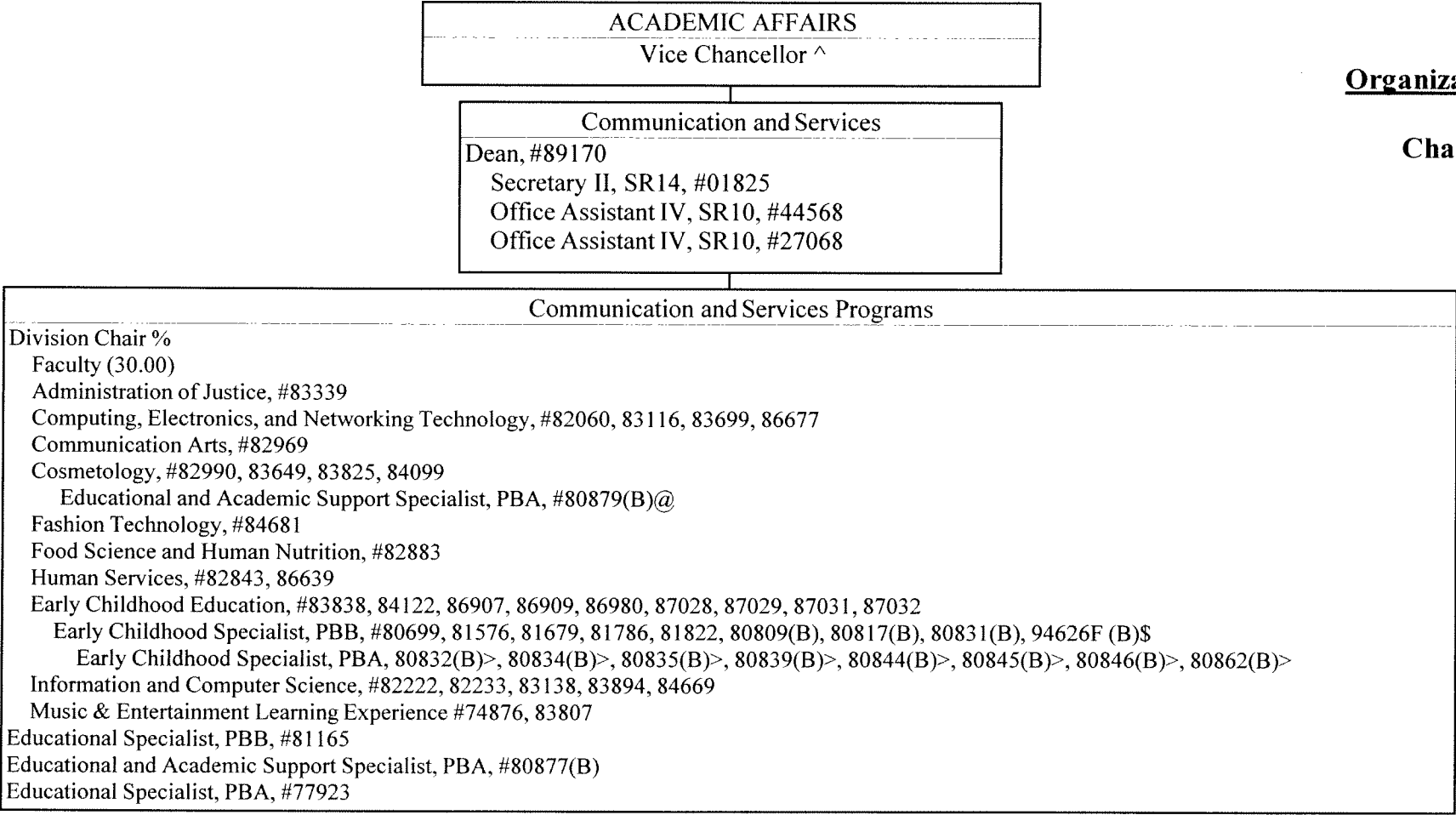
- ^ Excluded from position count this chart  
+ To be redescribed  
% Division Chair is appointed from any faculty position in the College.  
Multiple Division Chairs may be appointed but each position in the  
Division has only one immediate supervisor.  
\* Temporary

	<u>Perm</u>	<u>Temp</u>
General Fund	61.00	3.00
(B) Special Fund	1.00	

STATE OF HAWAII  
UNIVERSITY OF HAWAII  
COMMUNITY COLLEGES  
HONOLULU COMMUNITY COLLEGE

**Organization Chart**

**Chart IIIC**



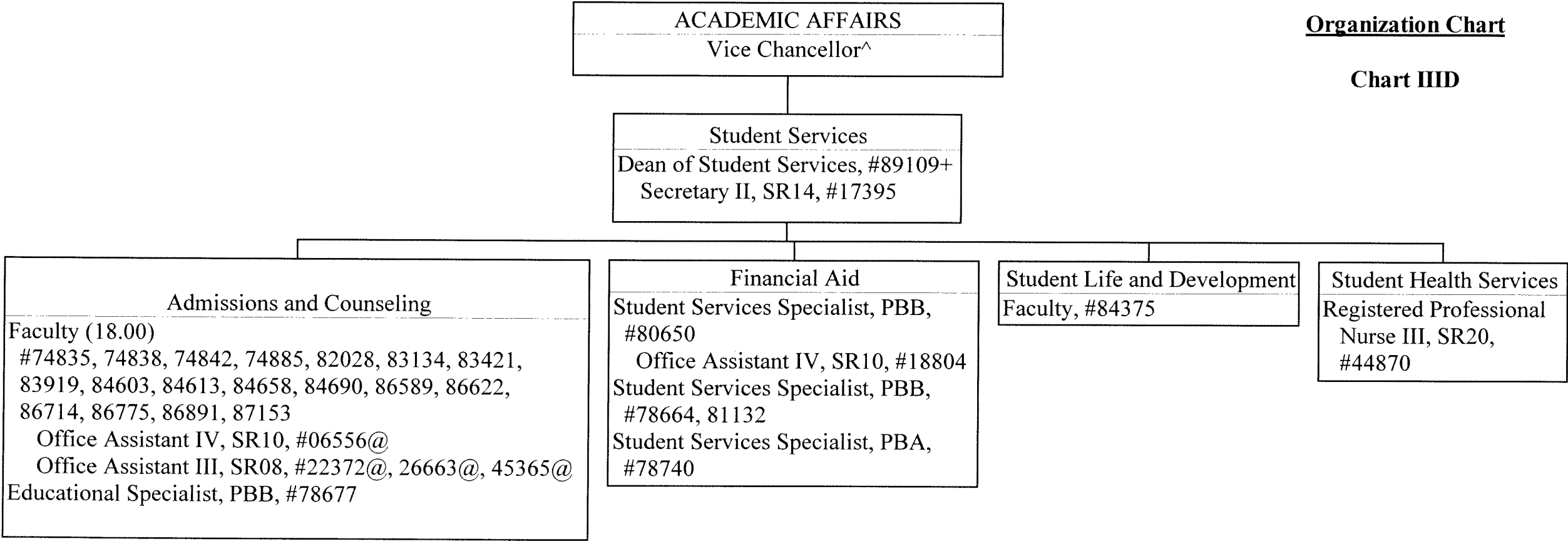
- ^ Excluded from position count this chart
- % Division Chair is appointed from any faculty position in the College.  
Multiple Division Chairs may be appointed but each position in the  
Division has only one supervisor.
- @ Supervised by one of the faculty positions
- \$ To be established
- > Supervised by one of the senior APT positions

	<u>Perm</u>
General Fund	41.00
(B) Special Fund	14.00

STATE OF HAWAII  
UNIVERSITY OF HAWAII  
COMMUNITY COLLEGES  
HONOLULU COMMUNITY COLLEGE  
ACADEMIC AFFAIRS

Organization Chart

Chart IID

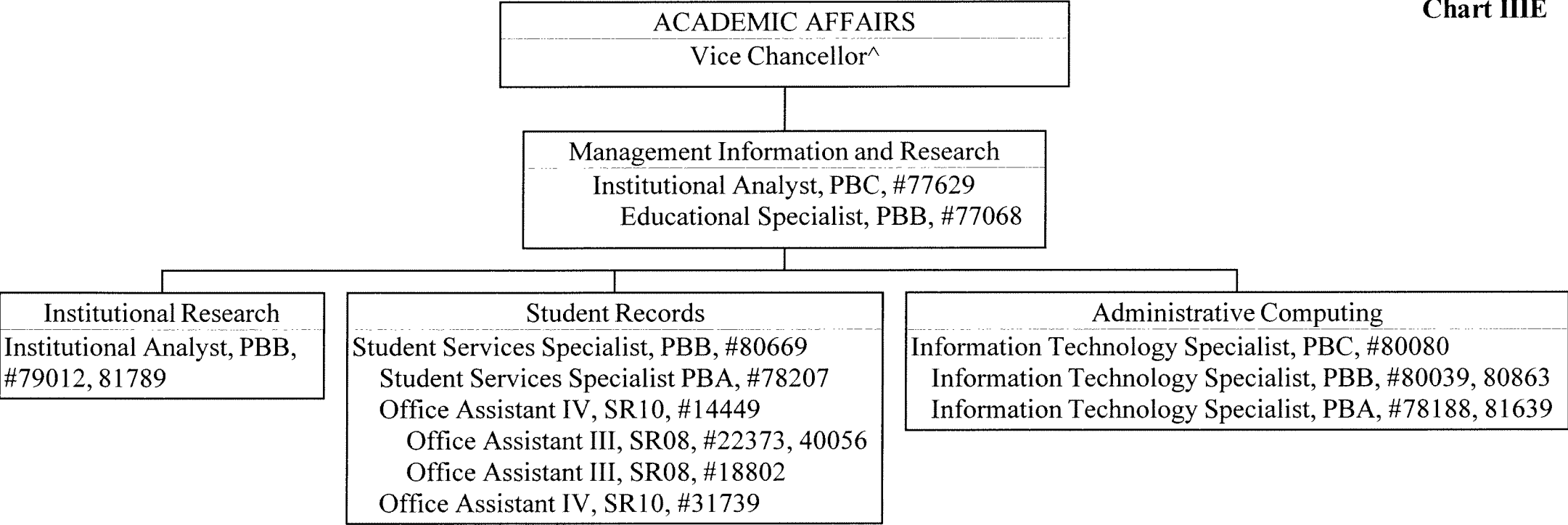


^ Excluded from position count this chart  
+ To be redescribed  
@ Supervised by one of the faculty positions

STATE OF HAWAII  
UNIVERSITY OF HAWAII  
COMMUNITY COLLEGES  
HONOLULU COMMUNITY COLLEGE  
ACADEMIC AFFAIRS

Organization Chart

Chart III E



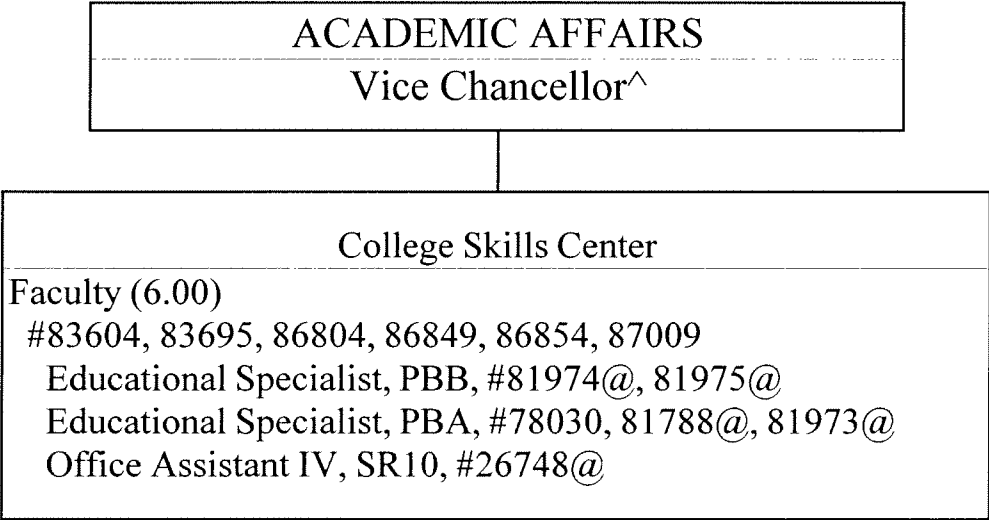
^ Excluded from positon count this chart



STATE OF HAWAII  
UNIVERSITY OF HAWAII  
COMMUNITY COLLEGES  
HONOLULU COMMUNITY COLLEGE  
ACADEMIC AFFAIRS

Organization Chart

Chart IIIF



^

 Excluded from position count this chart  

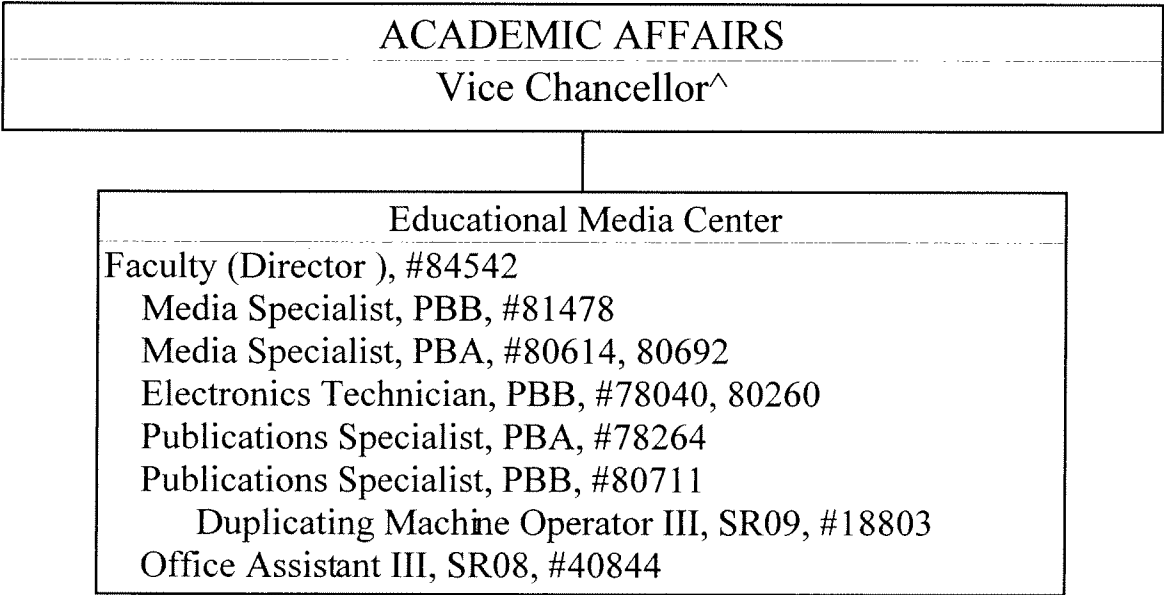
@

 Supervised by one of the faculty positions

STATE OF HAWAII  
UNIVERSITY OF HAWAII  
COMMUNITY COLLEGES  
HONOLULU COMMUNITY COLLEGE  
ACADEMIC AFFAIRS

Organization Chart

Chart IIIG

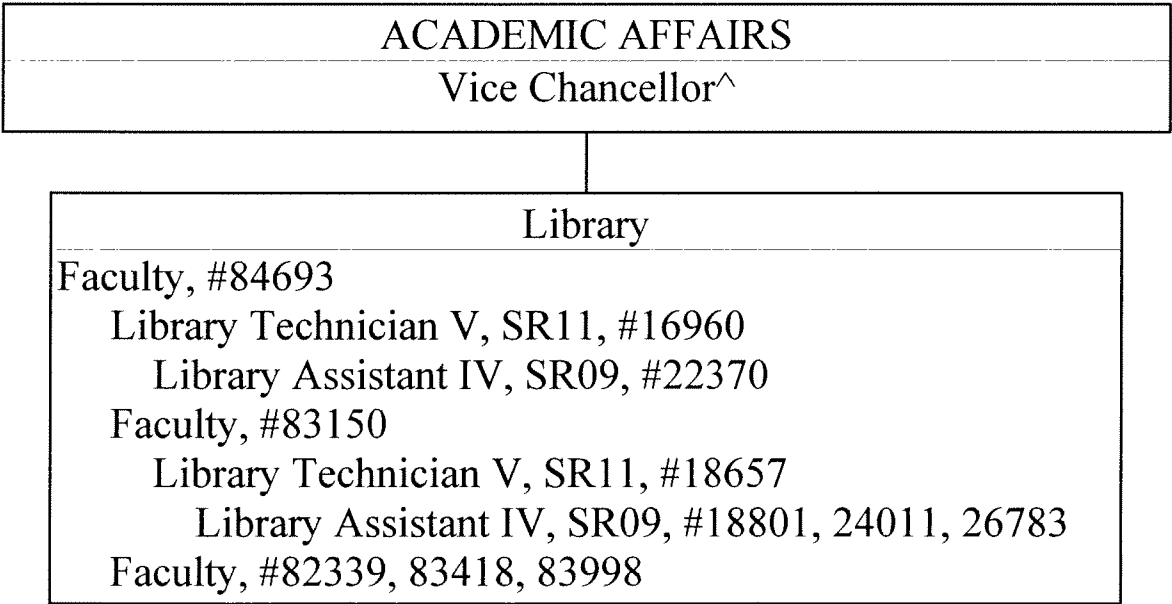


^ Excluded from position count this chart

STATE OF HAWAII  
UNIVERSITY OF HAWAII  
COMMUNITY COLLEGES  
HONOLULU COMMUNITY COLLEGE  
ACADEMIC AFFAIRS

Organization Chart

Chart IIIH

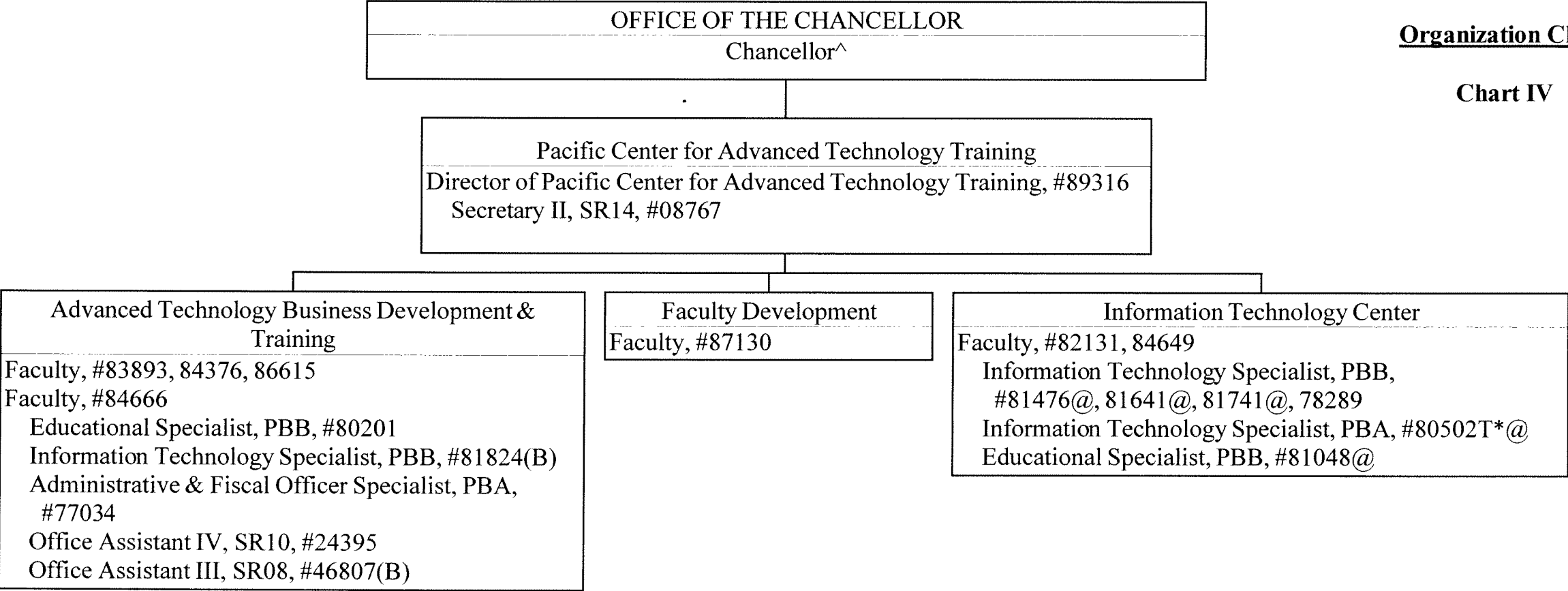


^ Excluded from position count this chart

STATE OF HAWAII  
UNIVERSITY OF HAWAII  
COMMUNITY COLLEGES  
HONOLULU COMMUNITY  
COLLEGE  
PACIFIC CENTER FOR ADVANCED  
TECHNOLOGY TRAINING

Organization Chart

Chart IV



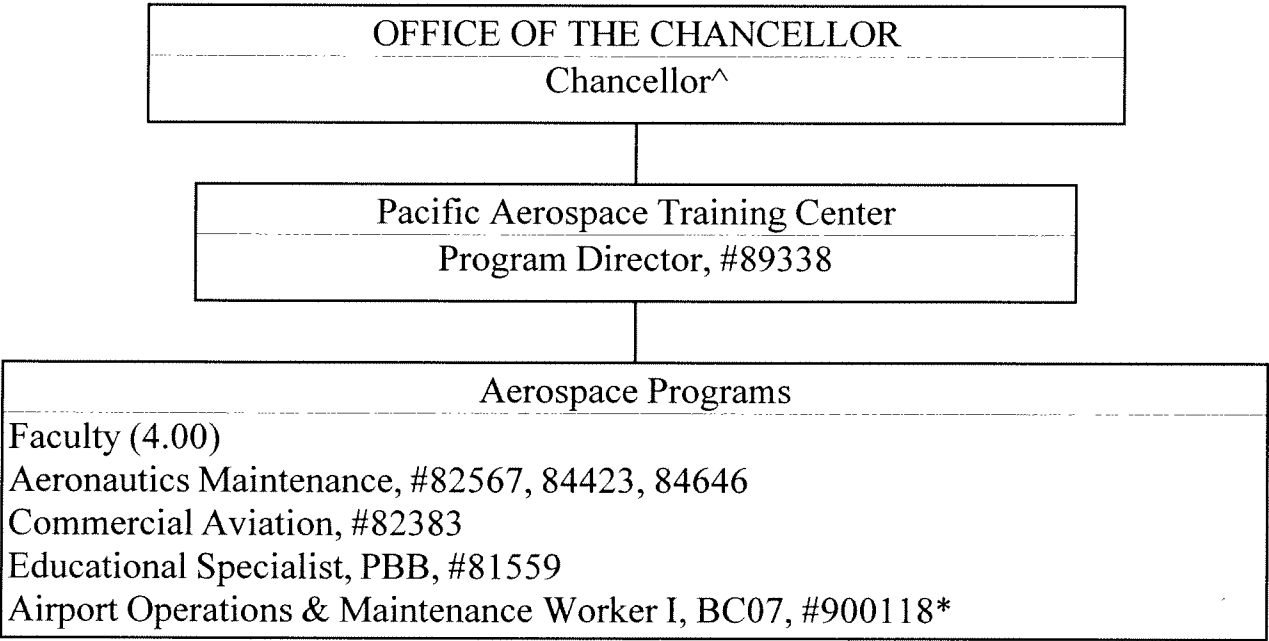
^ Excluded from position count this chart  
\* Temporary Position  
@ Supervised by one of the faculty positions

	Perm	Temp
General Fund	17.00	1.00
(B) Special Funds	2.00	

STATE OF HAWAII  
UNIVERSITY OF HAWAII  
COMMUNITY COLLEGES  
HONOLULU COMMUNITY COLLEGE  
PACIFIC AEROSPACE TRAINING CENTER

Organization Chart

Chart V



^

 Excluded from position count this chart  

\*

 Temporary position

	<u>Perm</u>	<u>Temp</u>
General Fund	6.00	1.00

STATE OF HAWAII  
UNIVERSITY OF HAWAII  
COMMUNITY COLLEGES  
HONOLULU COMMUNITY COLLEGE  
ADMINISTRATIVE SERVICES

OFFICE OF THE CHANCELLOR  
Chancellor^

Organization Chart

Administrative Services  
Vice Chancellor, CC, #89141  
Secretary II, SR14, #16956

Chart VI

Operations and Maintenance  
General Maintenance and Services  
Supervisor, SR18, #26940  
Building Maintenance Worker I, BC09,  
#03315, 27128  
Air Conditioning Mechanic I, BC10, #50059  
General Laborer II, BC03, #44611  
Janitor Supervisor I, F102, #06715  
Janitor III, WS02, #24868  
Janitor II, BC02, #14429, 21323, 23510,  
24867, 24869, 27123, 27124, 28619,  
29587, 29588, 37447, 40095, 42058,  
50073, 51298, 900541  
Groundskeeper II, WS02, #13862  
Groundskeeper I, BC02, #23511, 29589,  
900273

Business Office  
Administrative Officer, PBC, #80174  
Administrative Officer, PBB, #81159  
Administrative Officer, PBA, #80194,  
81601, 78570  
Account Clerk IV, SR13, #06623  
Account Clerk III, SR11, #15504  
Office Assistant IV, SR10, #22369  
Office Assistant III, SR08, #26664  
Cashier I, SR10, #26322, 43508

Human Resources Office  
Personnel Officer, PBB, #80366  
Personnel Officer, PBB, #78522  
Personnel Officer, PBA, #77020  
Personnel Clerk V, SR13,  
#41153

Telephone Services  
Electronics Technician, PBB,  
#80953

Security  
University Security Officer II, SR16,  
#26001  
University Security Officer I,  
SR14, #25998, 30525, 35420,  
900533

^ Excluded from position count this chart