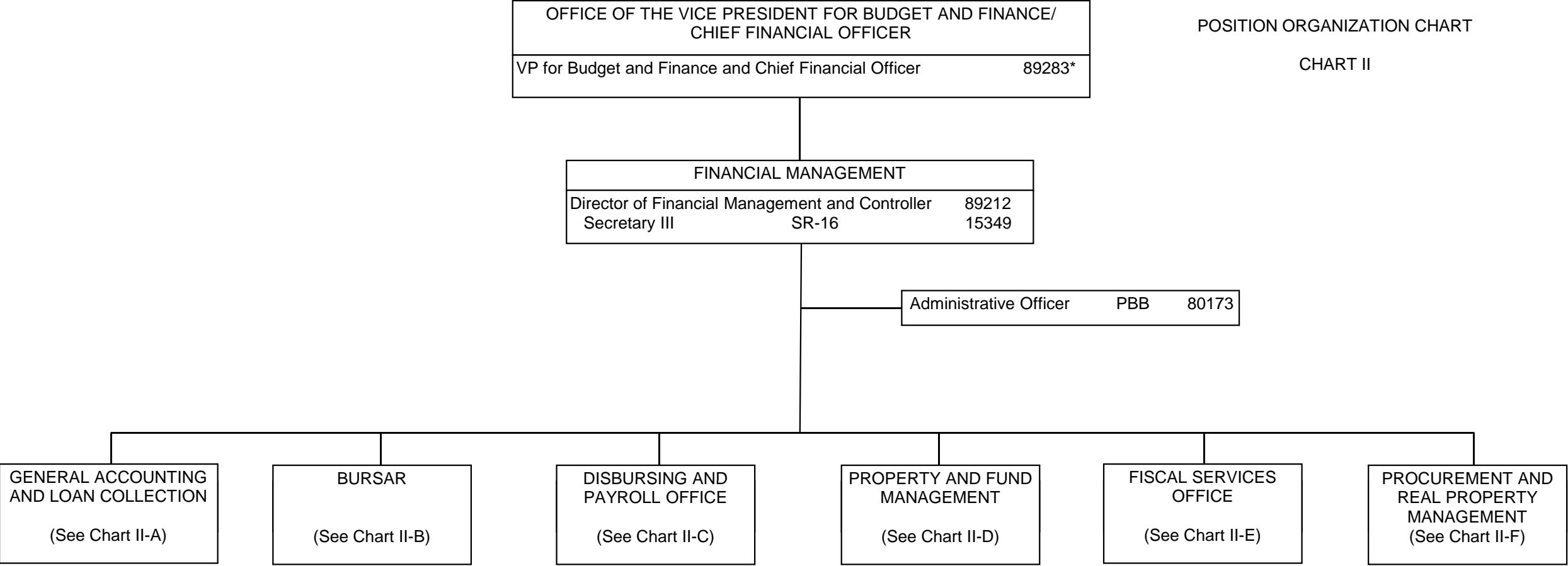


STATE OF HAWAI'I
UNIVERSITY OF HAWAI'I
SYSTEMWIDE ADMINISTRATION
VICE PRESIDENT FOR
BUDGET AND FINANCE/
CHIEF FINANCIAL OFFICER
FINANCIAL MANAGEMENT

POSITION ORGANIZATION CHART

CHART II



FINANCIAL MANAGEMENT		
Director of Financial Management and Controller		89212*
GENERAL ACCOUNTING AND LOAN COLLECTION (GALC)		
Accounting Mgr	PBD	78557
Accountant, Senior	PBC	80150
Accountant, Senior	PBB	80347
Accountant, Senior	PBB	80349
Accountant	PBB	81370
Accountant	PBB	78554
Accountant	PBB	81409
Accountant	PBB	80346
Accountant	PBB	80141
Accountant	PBB	77296
Accountant	PBB	80888
Accountant	PBB	78555
Accountant	PBB	80549
Accountant	PBB	81407
Accountant	PBB	78556
Loan Officer, Senior	PBB	81978
Accountant	PBB	81862(N)
Loan Officer	PBB	80205(N)
Loan Officer	PBA	81814(N)
Loan Officer	PBA	80333(N)
Loan Officer	PBA	80842(N)
Loan Officer	PBA	80856(N)
Loan Officer	PBA	81962(N)
Loan Officer	PBA	81479(N)

STATE OF HAWAI'I
UNIVERSITY OF HAWAI'I
SYSTEMWIDE ADMINISTRATION
VICE PRESIDENT FOR
BUDGET AND FINANCE/
CHIEF FINANCIAL OFFICER
FINANCIAL MANAGEMENT
GENERAL ACCOUNTING AND LOAN
COLLECTION

POSITION ORGANIZATION CHART

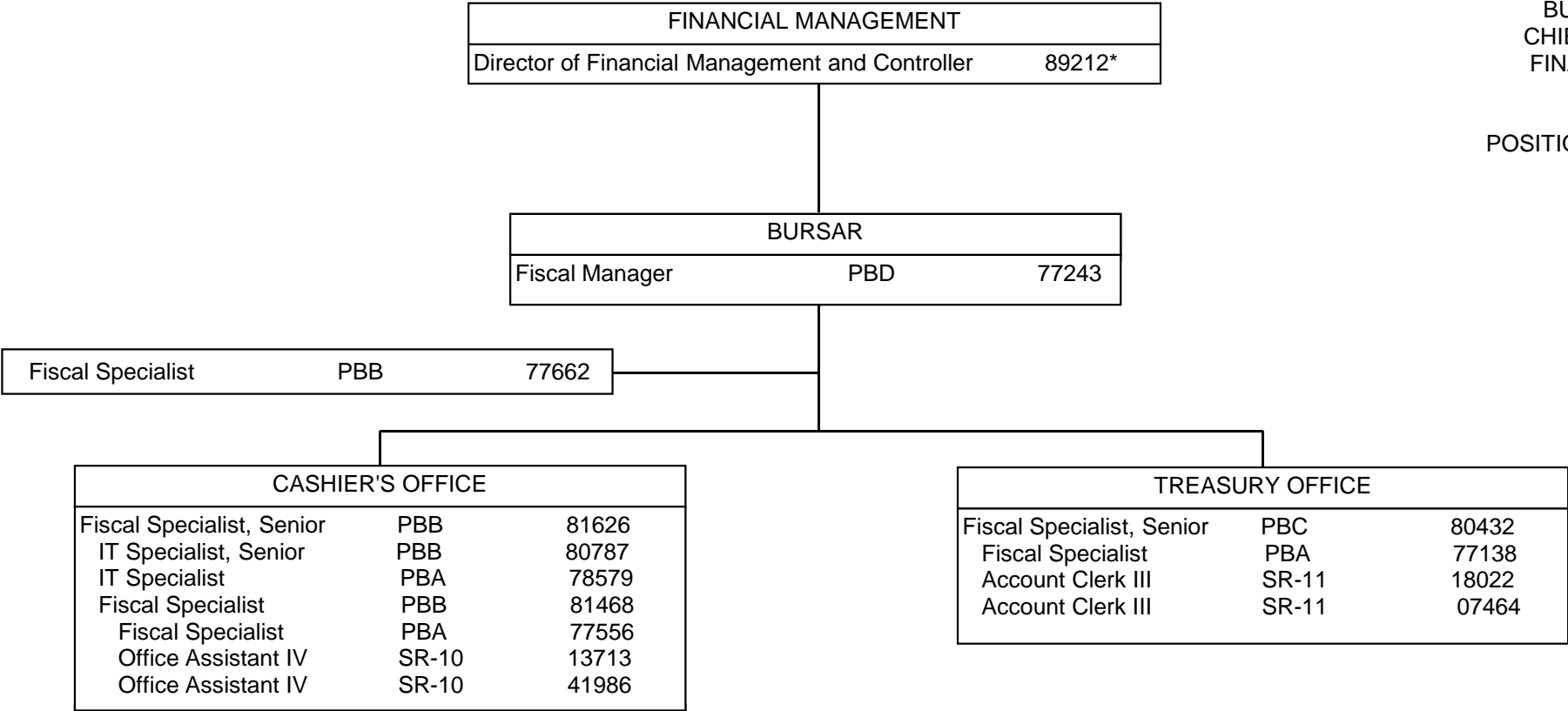
CHART II-A

* Excluded from position count, this page
** Positions appropriated to Manoa, reflected organizationally on this chart

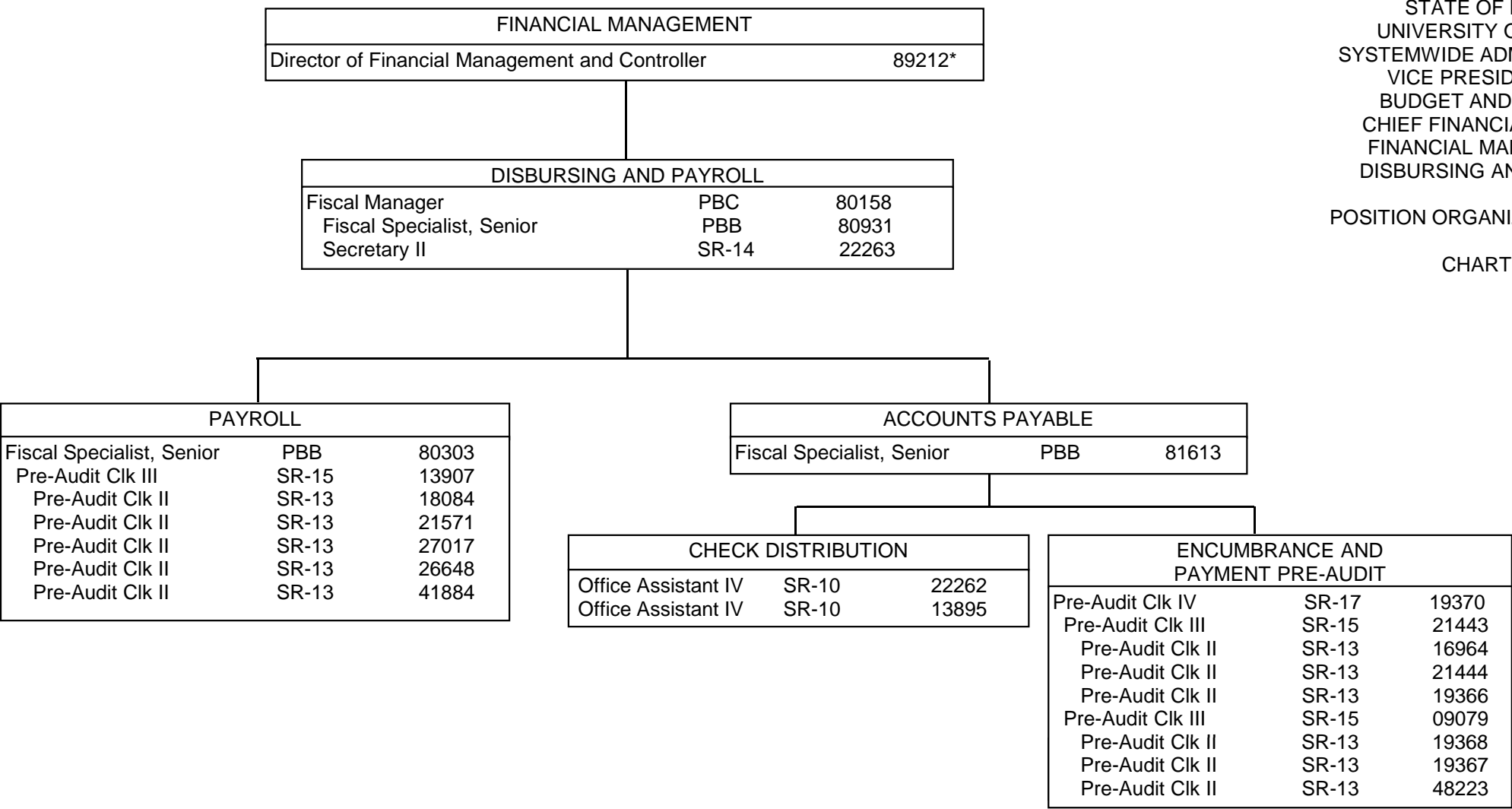
STATE OF HAWAI'I
UNIVERSITY OF HAWAI'I
SYSTEMWIDE ADMINISTRATION
VICE PRESIDENT FOR
BUDGET AND FINANCE/
CHIEF FINANCIAL OFFICER
FINANCIAL MANAGEMENT
BURSAR

POSITION ORGANIZATION CHART

CHART II-B



* Excluded from position count, this page



STATE OF HAWAI'I
UNIVERSITY OF HAWAI'I
SYSTEMWIDE ADMINISTRATION
VICE PRESIDENT FOR
BUDGET AND FINANCE/
CHIEF FINANCIAL OFFICER
FINANCIAL MANAGEMENT
DISBURSING AND PAYROLL

POSITION ORGANIZATION CHART

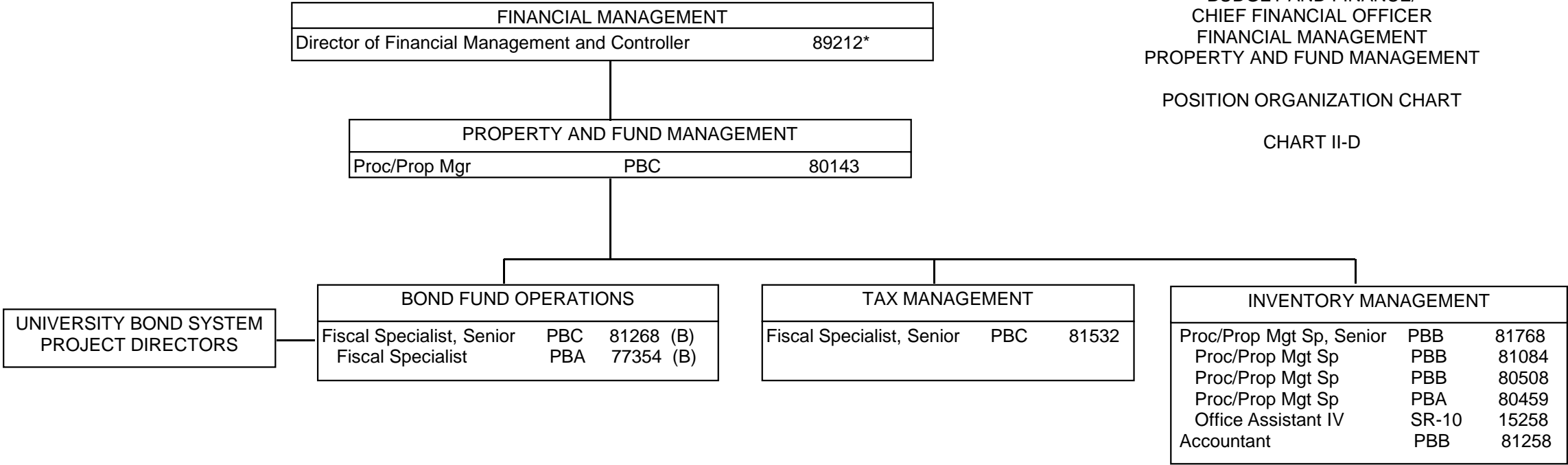
CHART II-C

* Excluded from position count, this page

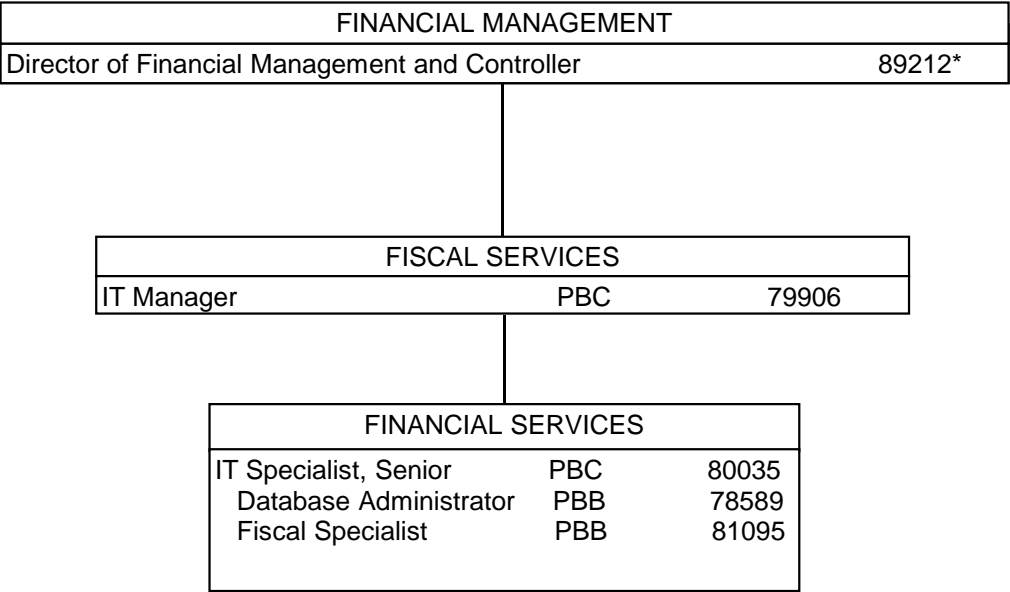
STATE OF HAWAI'I
UNIVERSITY OF HAWAI'I
SYSTEMWIDE ADMINISTRATION
VICE PRESIDENT FOR
BUDGET AND FINANCE/
CHIEF FINANCIAL OFFICER
FINANCIAL MANAGEMENT
PROPERTY AND FUND MANAGEMENT

POSITION ORGANIZATION CHART

CHART II-D



* Excluded from position count, this page
Position appropriated but not established: 98963F (0.50)

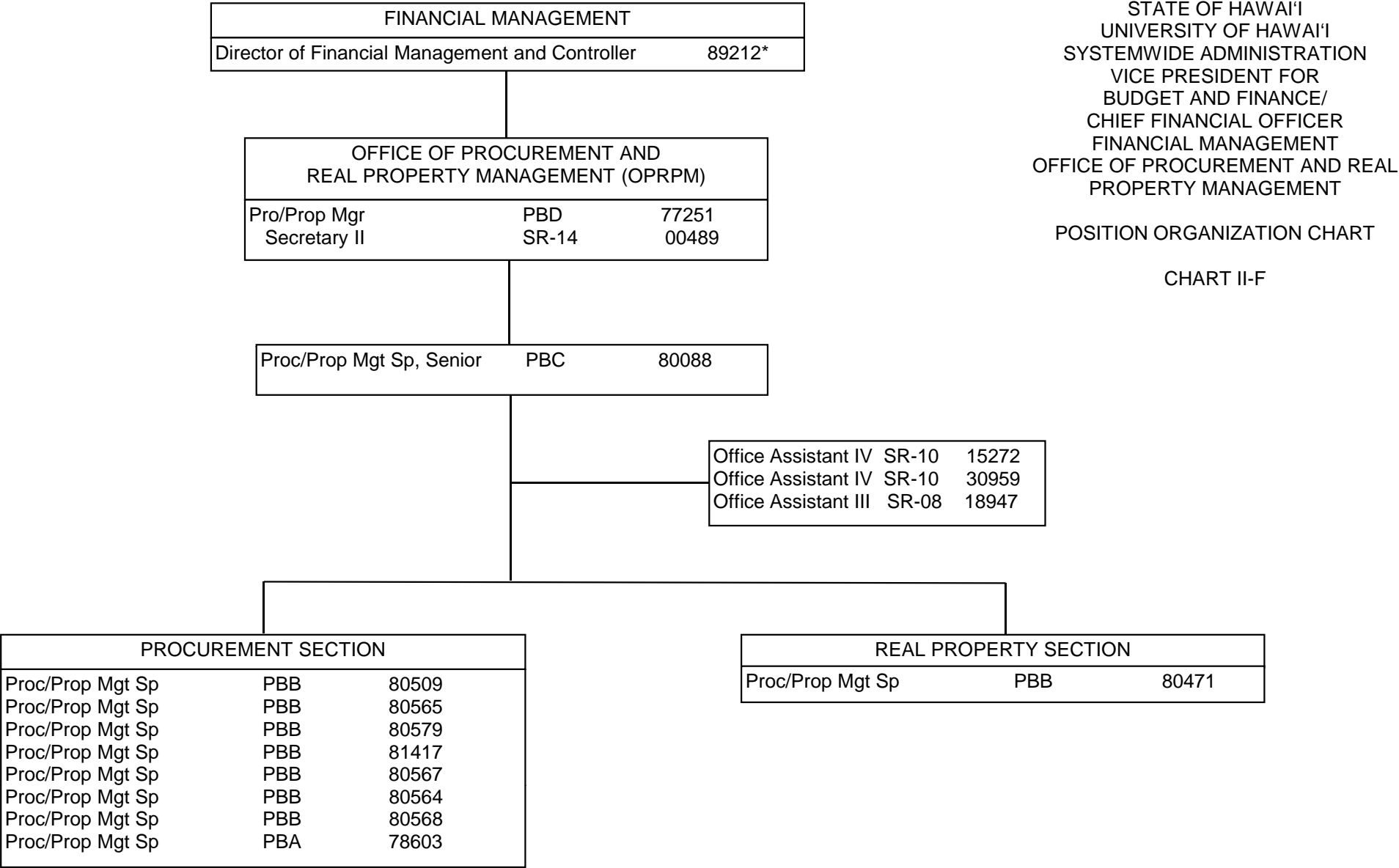


STATE OF HAWAI'I
UNIVERSITY OF HAWAI'I
SYSTEMWIDE ADMINISTRATION
VICE PRESIDENT FOR
BUDGET AND FINANCE/
CHIEF FINANCIAL OFFICER
FINANCIAL MANAGEMENT
FISCAL SERVICES

POSITION ORGANIZATION CHART

CHART II-E

* Excluded from position count, this page

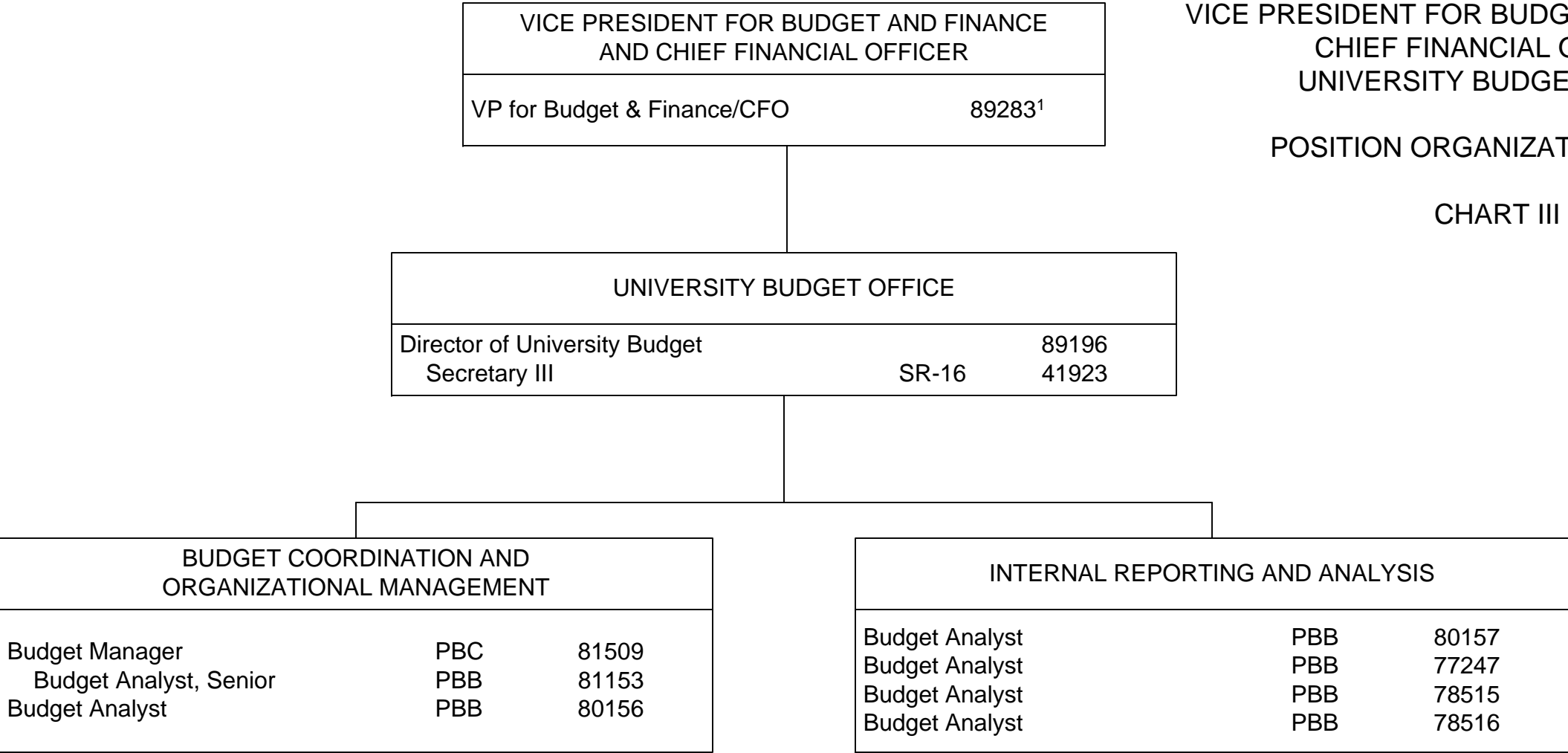


* Excluded from position count, this page
Position appropriated but not established: 99953F

STATE OF HAWAI'I
UNIVERSITY OF HAWAI'I
SYSTEMWIDE ADMINISTRATION
VICE PRESIDENT FOR BUDGET AND FINANCE/
CHIEF FINANCIAL OFFICER
UNIVERSITY BUDGET OFFICE

POSITION ORGANIZATION CHART

CHART III



¹ Excluded from position count

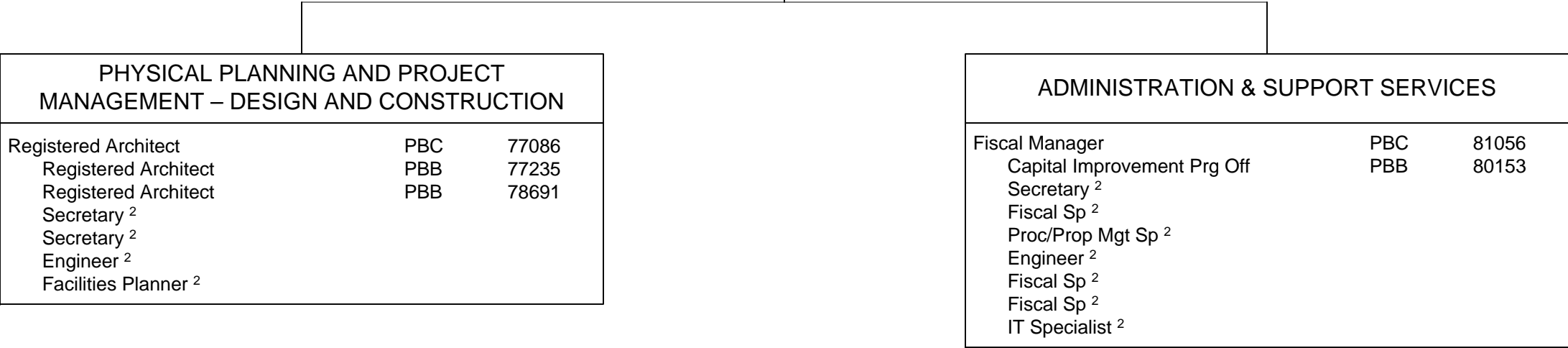
OFFICE OF THE VICE PRESIDENT FOR BUDGET & FINANCE/ CHIEF FINANCIAL OFFICER		
Vice President for Budget and Finance/CFO		89283 ¹

OFFICE OF CAPITAL IMPROVEMENTS		
Associate Vice President for Capital Improvements		89233
Secretary IV	SR-18	100033

STATE OF HAWAI'I
UNIVERSITY OF HAWAI'I
SYSTEMWIDE ADMINISTRATION
VICE PRESIDENT FOR BUDGET AND
FINANCE/CHIEF FINANCIAL OFFICER
OFFICE OF CAPITAL IMPROVEMENTS

POSITION ORGANIZATION CHART

CHART IV



¹ Excluded from position count

² To be created via reassigned position within the University and/or to be requested

³ Appropriated but not established, 11 Special Fund (B) positions: 93925F – 93935F

	<u>Perm</u>	
General Fund	7.00	
General Fund	11.00	(to be reassigned/requested)
Special Fund	11.00 ³	