

State of Hawai'i
University of Hawai'i
University of Hawai'i at Mānoa
COLLEGES OF ARTS AND SCIENCES
COLLEGE OF NATURAL SCIENCES
BIOLOGY PROGRAM
POSITION ORGANIZATION CHART

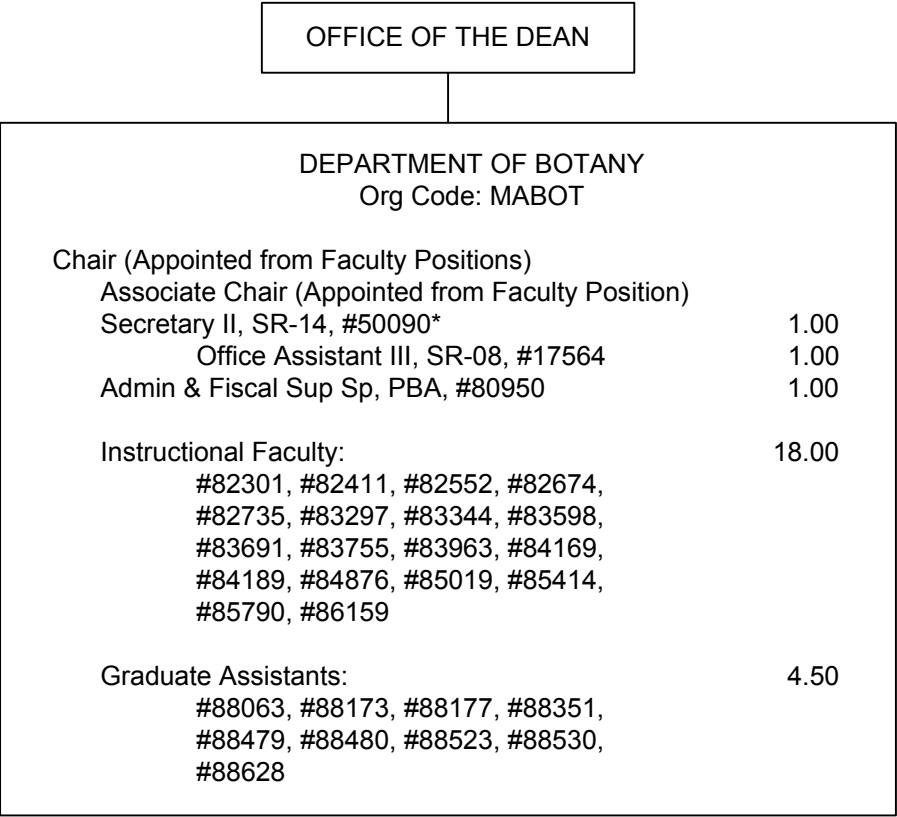
CHART II-A

General Fund FTE: 43.00
General Fund FTE: 3.50 (Auth Temp)

*Appropriated Temporary Positions

State of Hawai'i
University of Hawai'i
University of Hawai'i at Mānoa
COLLEGES OF ARTS AND SCIENCES
COLLEGE OF NATURAL SCIENCES
DEPARTMENT OF BOTANY
POSITION ORGANIZATION CHART

CHART II-B



General Fund FTE: 25.50

*Position abolished, pending reestablishment

CHART II-C

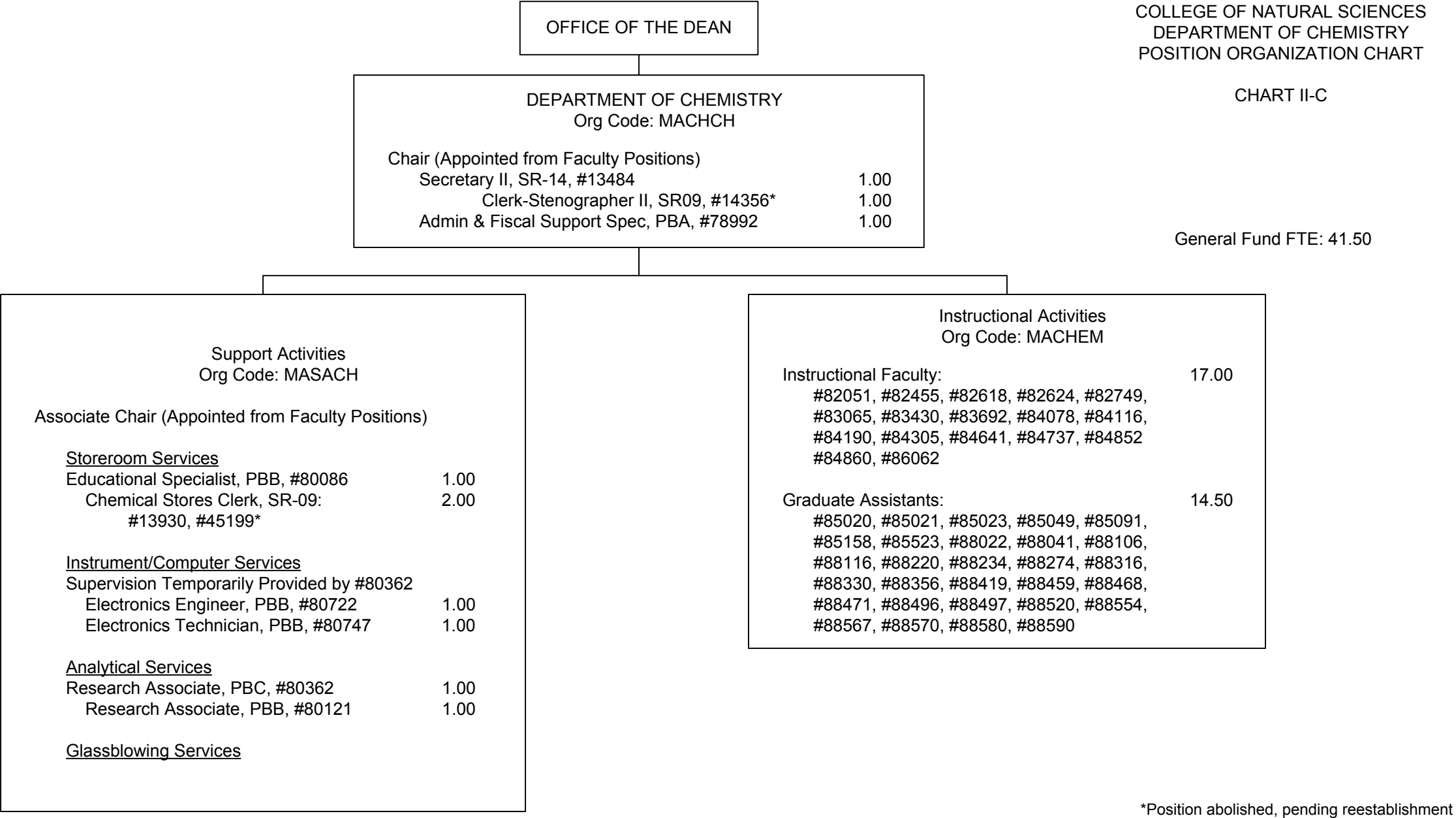


CHART II-D

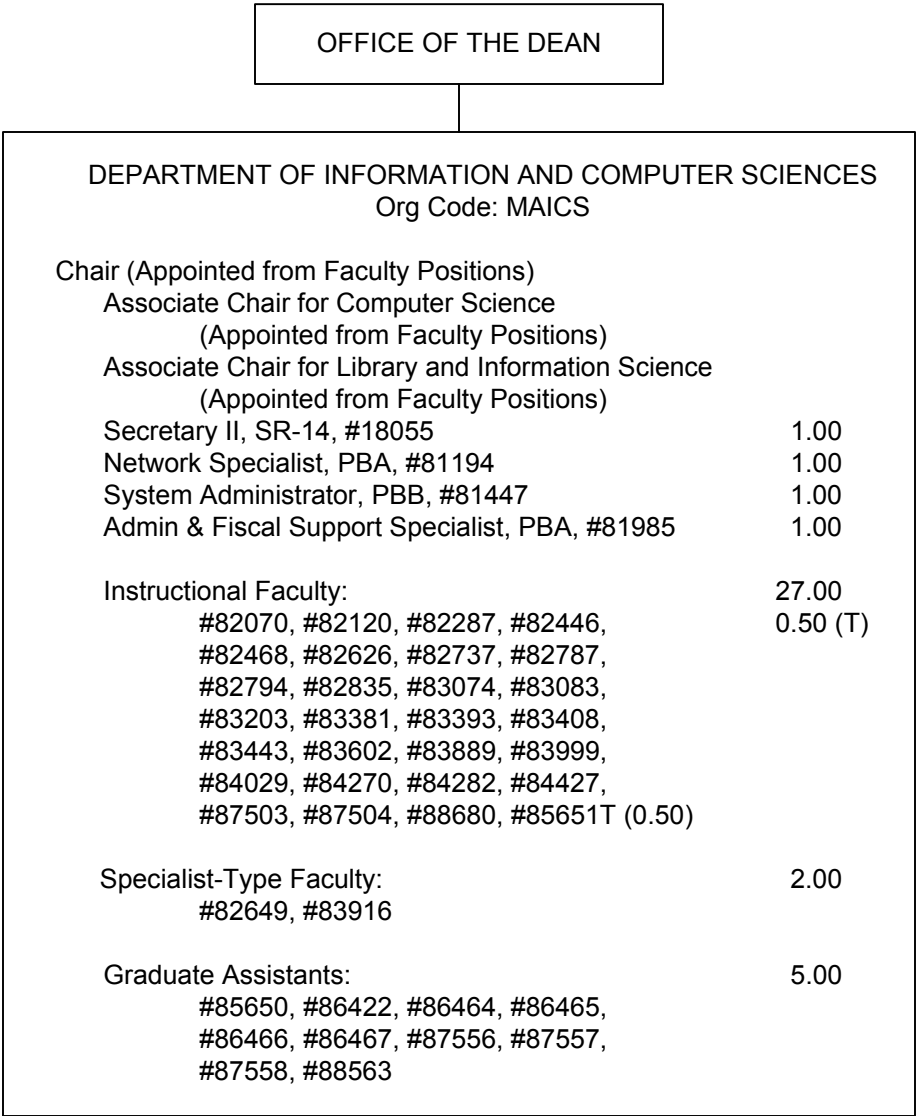
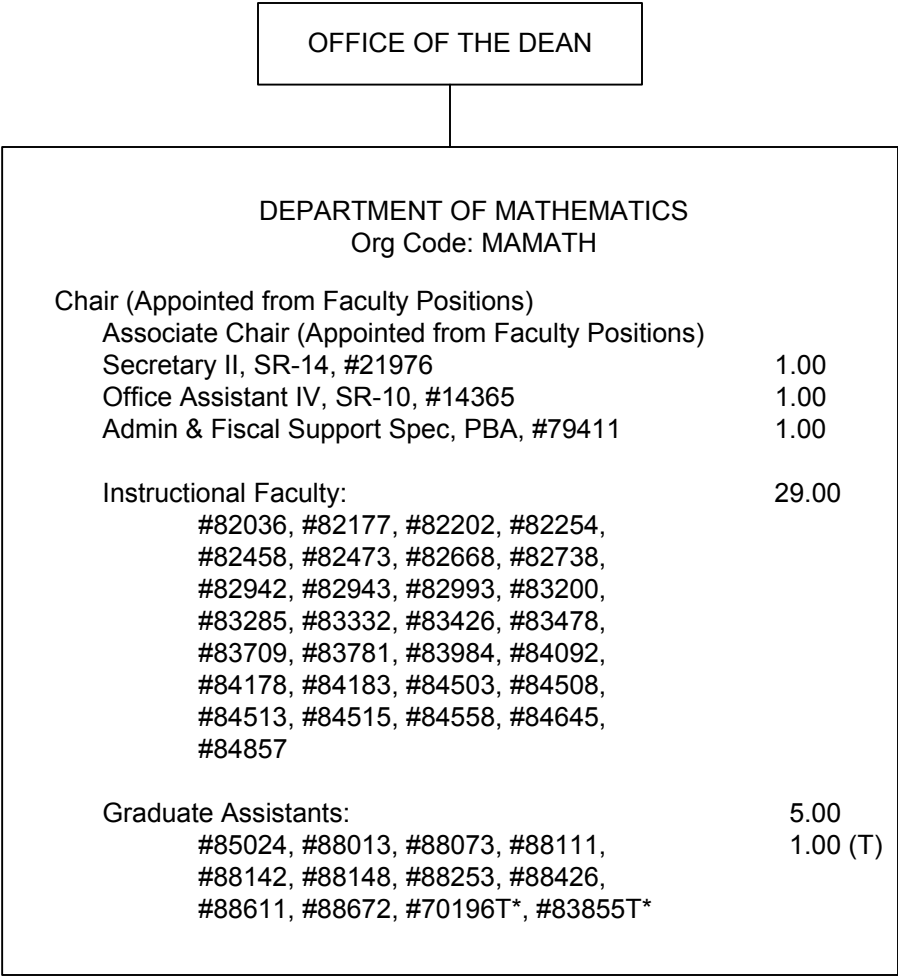


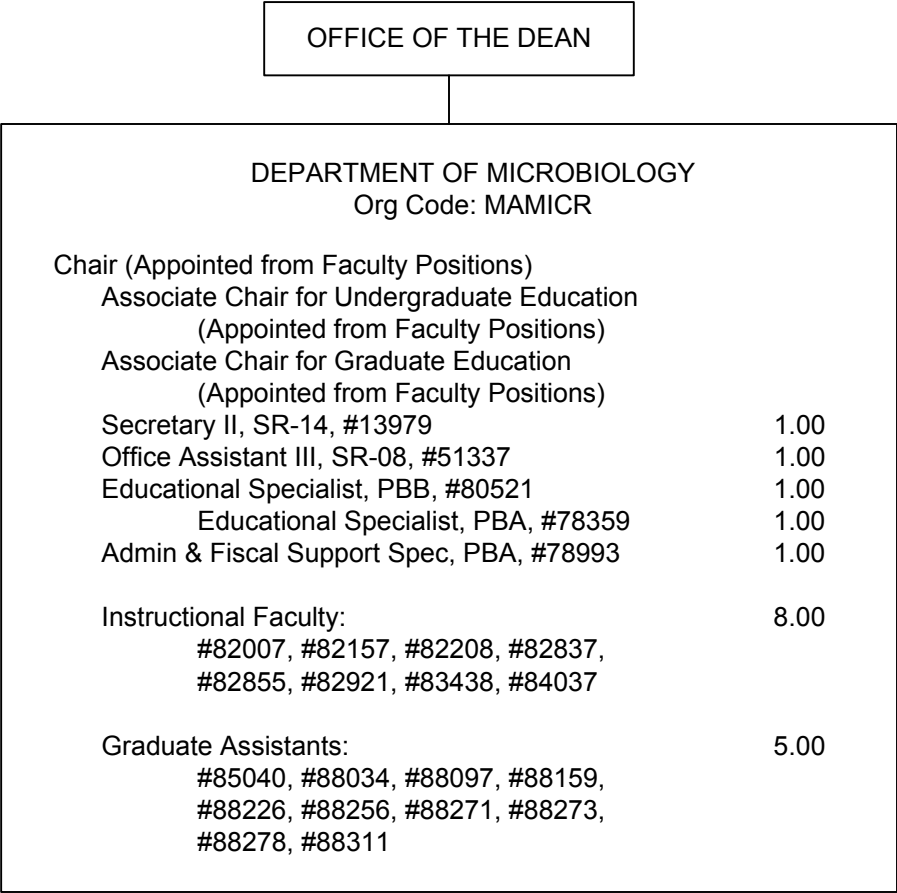
CHART II-E

General Fund FTE: 37.00
General Fund FTE: 1.00 (Auth Temp)



*Appropriated Temporary Positions

CHART II-F



General Fund FTE: 18.00

State of Hawai'i
University of Hawai'i
University of Hawai'i at Mānoa
COLLEGES OF ARTS AND SCIENCES
COLLEGE OF NATURAL SCIENCES
DEPARTMENT OF PHYSICS AND ASTRONOMY
POSITION ORGANIZATION CHART

CHART II-G

OFFICE OF THE DEAN

DEPARTMENT OF PHYSICS AND ASTRONOMY Org Code: MAPA	
Chair (Appointed from Faculty Positions)	
Secretary II, SR-14, #12918	1.00
Office Assistant III,SR-08, #14355	1.00
Scientific Instrument Technician, PBB, #80706	1.00
Scientific Instrument Technician, PBB, #80703	1.00
Instructional Faculty:	22.00
#82206, #82217, #82314, #82633, #82770, #82875, #83534, #83547, #83790, #83813, #83861, #83910, #83915, #83926, #84235, #84240, #84398, #84494, #84587, #84675, #88615, #84773	
Graduate Assistants:	7.00
#85506, #88055, #88057, #88176, #88198, #88270, #88309, #88385, #88389, #88441, #88478, #88524, #88593, #88650, #70197T*, #83844T*, #83849T*, #84184T*	
	2.00 (T)

General Fund FTE: 33.00
General Fund FTE: 2.00 (Auth Temp)

*Appropriated Temporary Positions