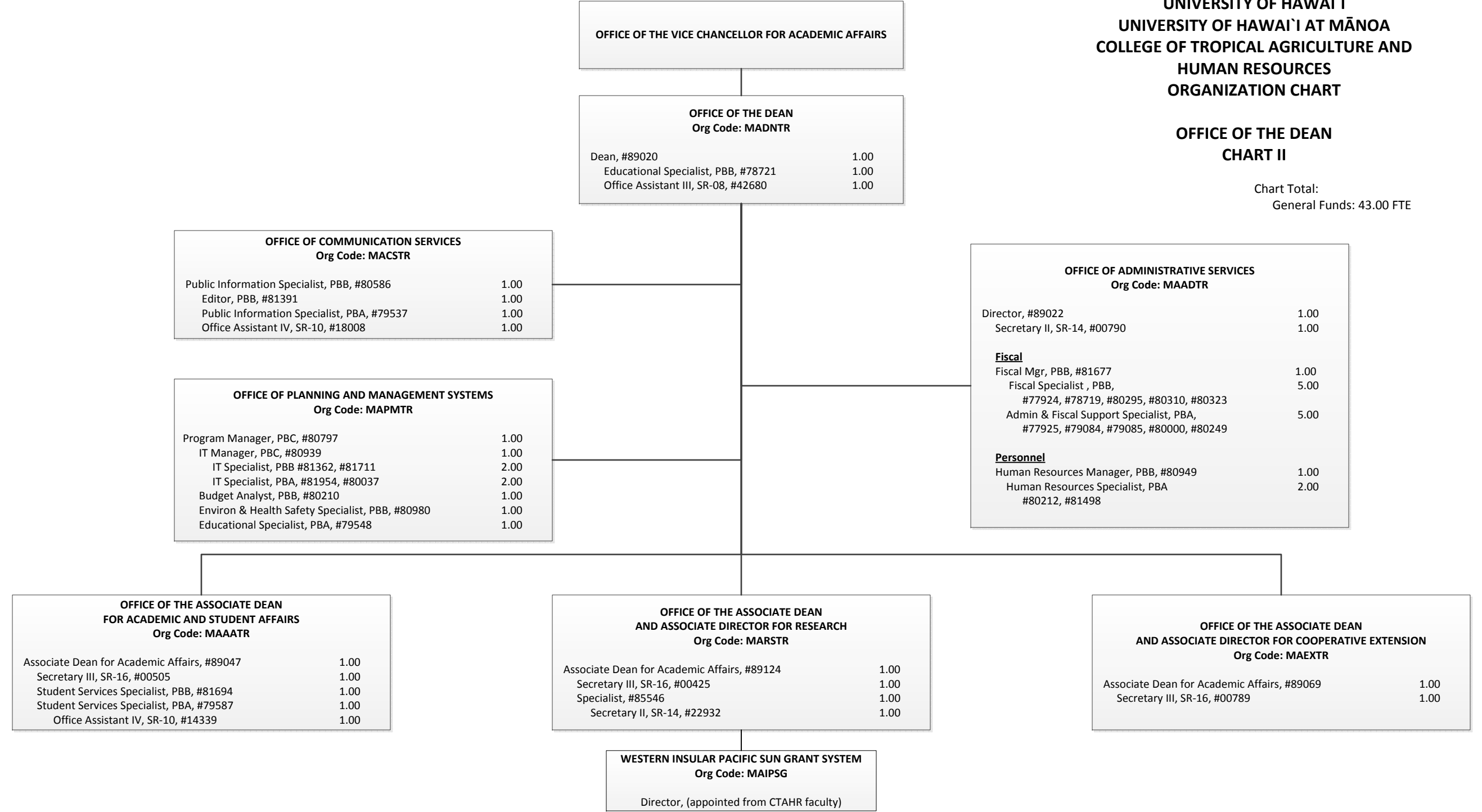


STATE OF HAWAI`I
UNIVERSITY OF HAWAI`I
UNIVERSITY OF HAWAI`I AT MĀNOA
COLLEGE OF TROPICAL AGRICULTURE AND
HUMAN RESOURCES
ORGANIZATION CHART

OFFICE OF THE DEAN
CHART II

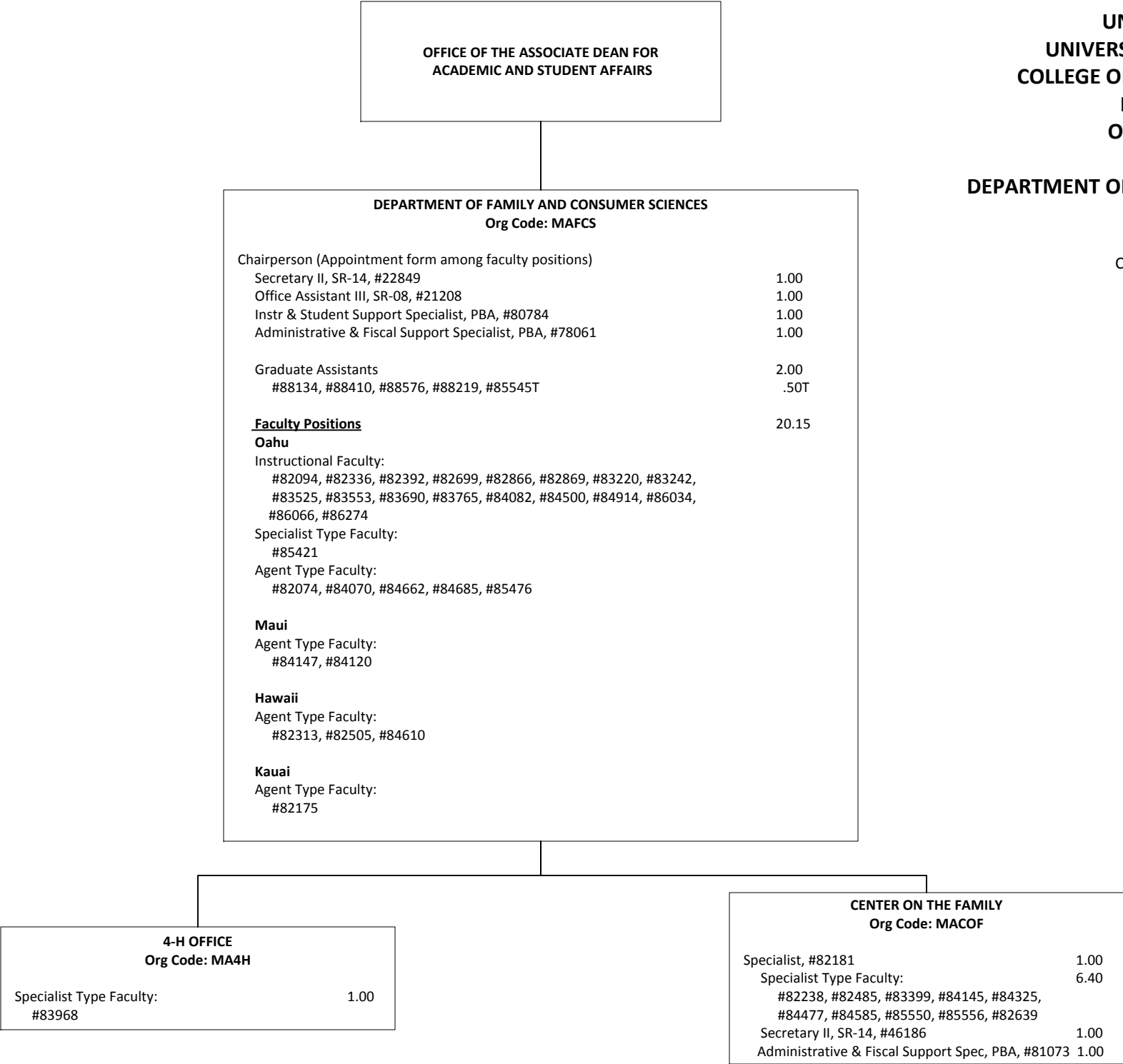
Chart Total:
General Funds: 43.00 FTE



STATE OF HAWAI`I
UNIVERSITY OF HAWAI`I
UNIVERSITY OF HAWAI`I AT MĀNOA
COLLEGE OF TROPICAL AGRICULTURE AND
HUMAN RESOURCES
ORGANIZATION CHART

DEPARTMENT OF FAMILY AND CONSUMER SCIENCES
CHART III

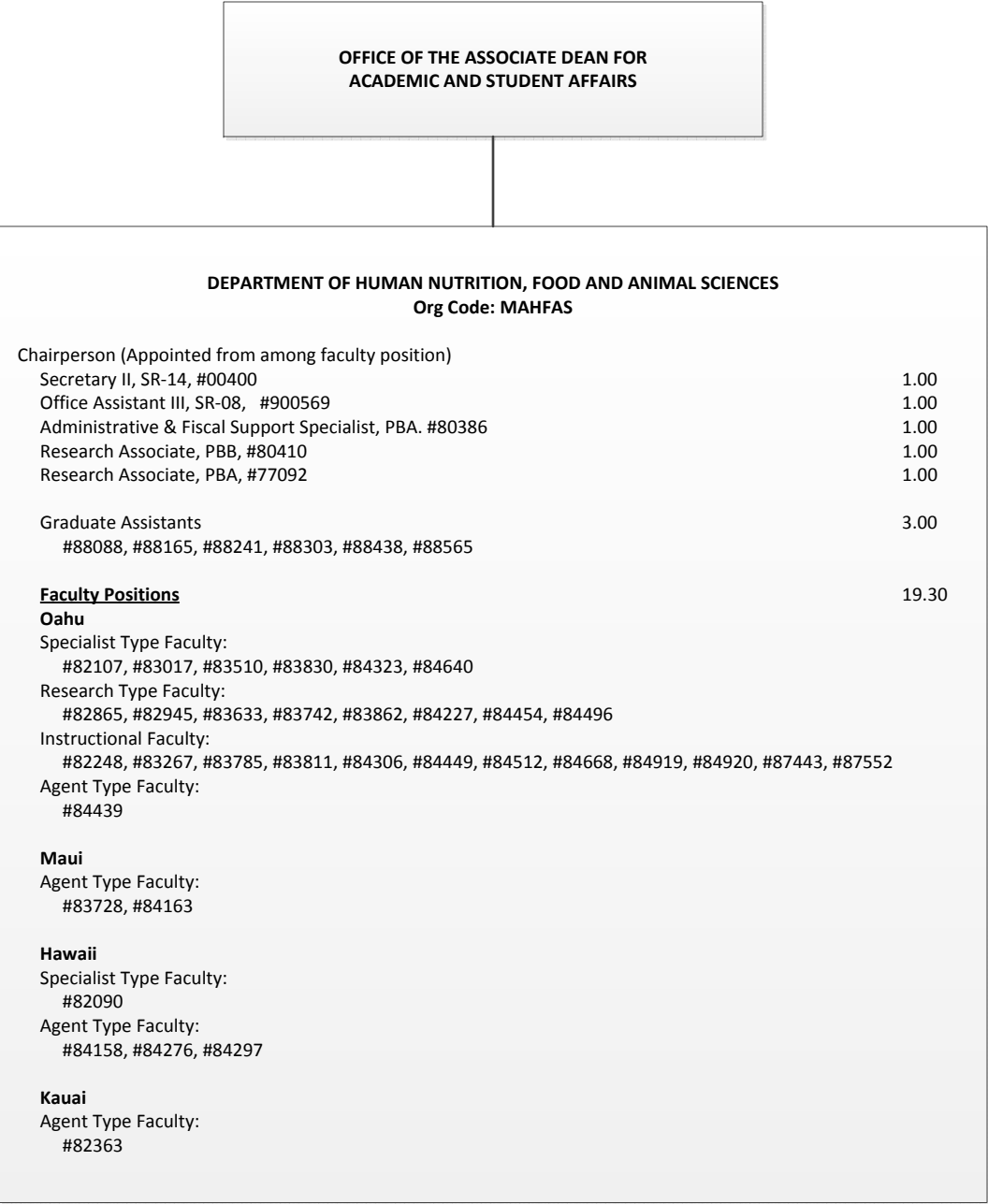
Chart Total:
General Funds: 38.55 FTE
General Funds (Auth Temp): 0.50 FTE



STATE OF HAWAI`I
UNIVERSITY OF HAWAI`I
UNIVERSITY OF HAWAI`I AT MĀNOA
COLLEGE OF TROPICAL AGRICULTURE AND
HUMAN RESOURCES
ORGANIZATION CHART

DEPARTMENT OF HUMAN NUTRITION, FOOD AND
ANIMAL SCIENCES
CHART IV

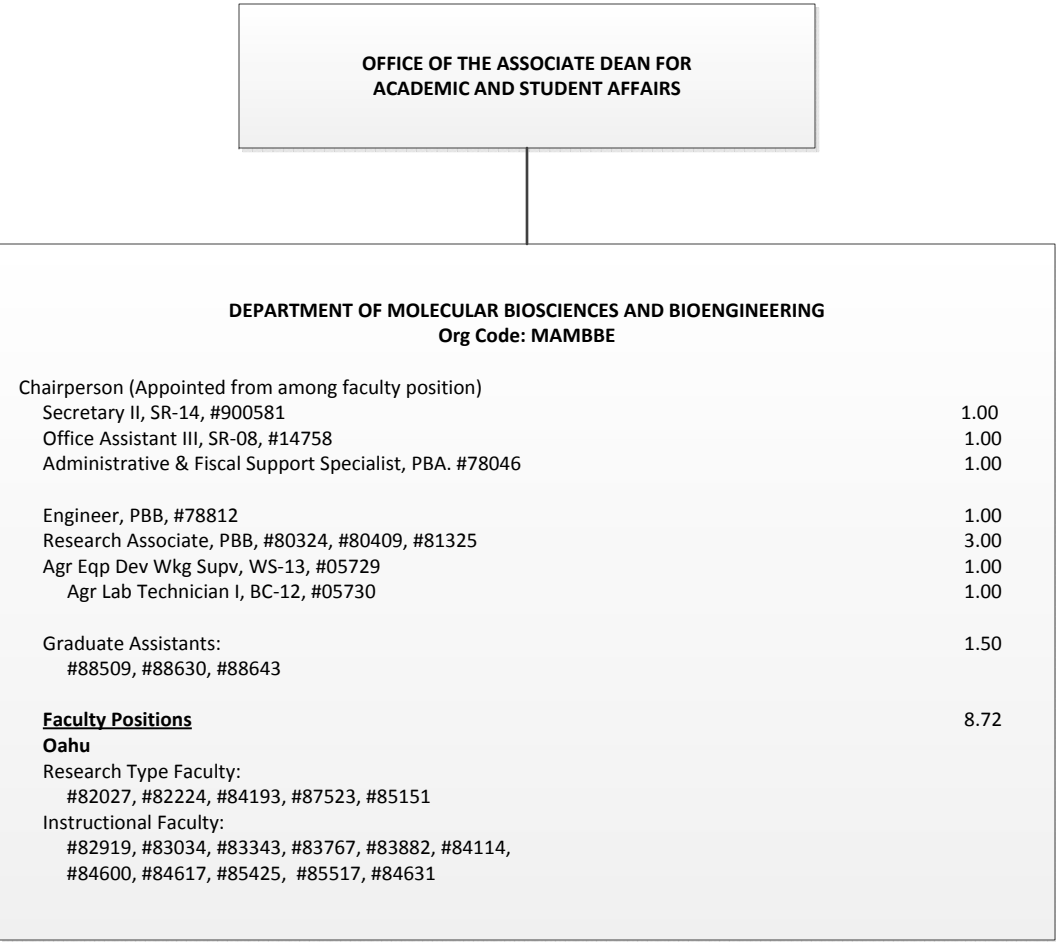
Chart Total:
General Funds: 27.30 FTE



STATE OF HAWAI`I
UNIVERSITY OF HAWAI`I
UNIVERSITY OF HAWAI`I AT MĀNOA
COLLEGE OF TROPICAL AGRICULTURE AND
HUMAN RESOURCES
ORGANIZATION CHART

DEPARTMENT OF MOLECULAR BIOSCIENCES AND
BIOENGINEERING
CHART V

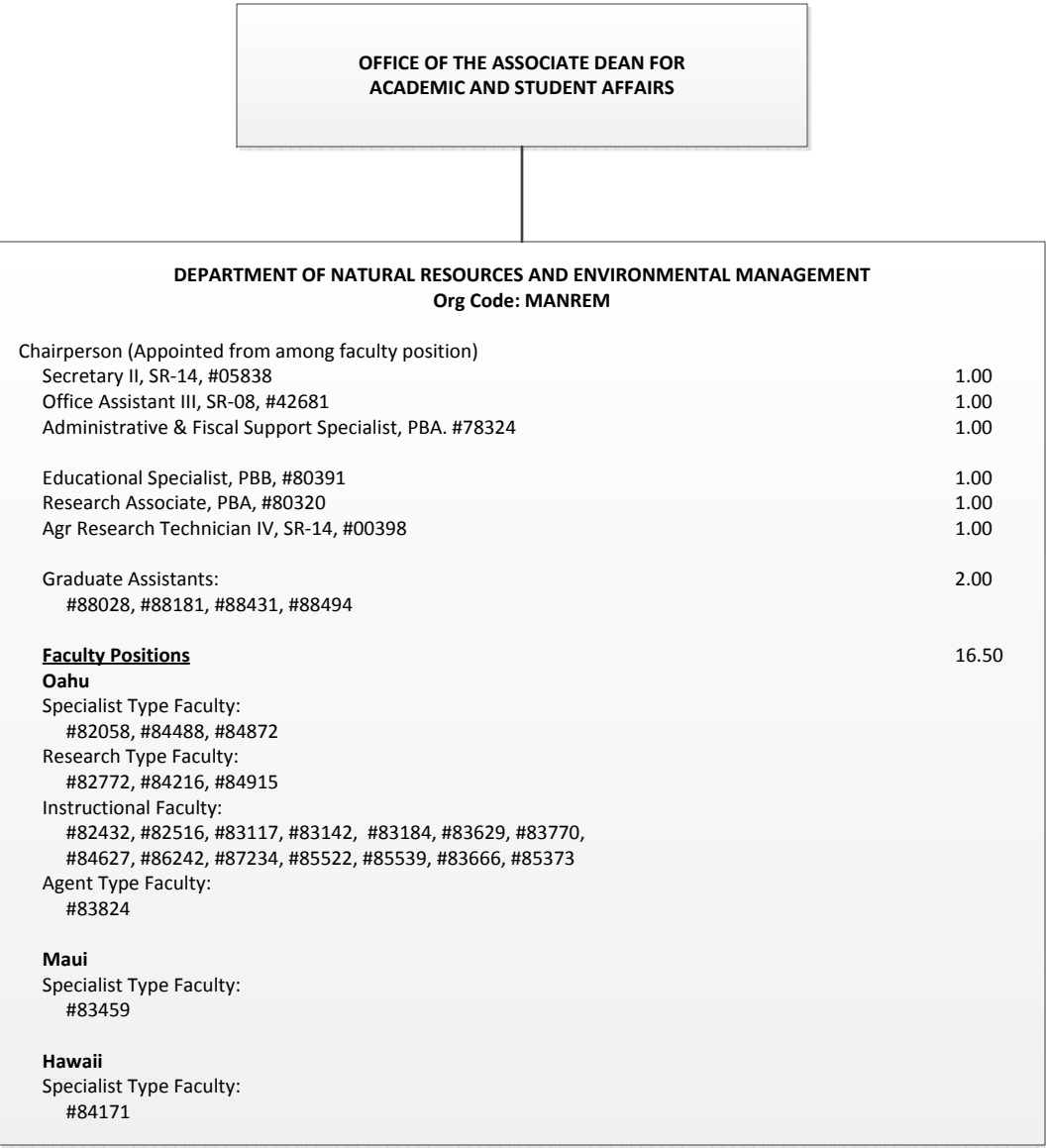
Chart Total:
General Funds: 19.22 FTE



STATE OF HAWAI`I
UNIVERSITY OF HAWAI`I
UNIVERSITY OF HAWAI`I AT MĀNOA
COLLEGE OF TROPICAL AGRICULTURE AND
HUMAN RESOURCES
ORGANIZATION CHART

DEPARTMENT OF NATURAL RESOURCES AND
ENVIRONMENTAL MANAGEMENT
CHART VI

Chart Total:
General Funds: 25.50 FTE



OFFICE OF THE ASSOCIATE DEAN FOR
ACADEMIC AND STUDENT AFFAIRS

STATE OF HAWAI`I
UNIVERSITY OF HAWAI`I
UNIVERSITY OF HAWAI`I AT MĀNOA
COLLEGE OF TROPICAL AGRICULTURE AND
HUMAN RESOURCES
ORGANIZATION CHART

DEPARTMENT OF PLANT AND ENVIRONMENTAL
PROTECTION SCIENCES
CHART VII

Chart Total:
General Funds: 26.11 FTE

DEPARTMENT OF PLANT AND ENVIRONMENTAL PROTECTION SCIENCES
Org Code: MAPEPS

Chairperson (Appointed from among faculty position)	
Secretary II, SR-14, #07477	1.00
Office Assistant III, SR-08, #00794, #15509	2.00
Administrative & Fiscal Support Specialist, PBA. #77864	1.00
Educational Specialist, PBB, #80250	1.00
Research Associate, PBB, #80385, #80388, #81178, #81311	4.00
Research Associate, PBA, #81313	1.00
Agr Research Technician V, SR-16, #00442	1.00
Agr Research Technician IV, SR-14, #24270	1.00
Agr Research Technician III, SR-11, #24269	1.00
Graduate Assistants: #88486, #84932	1.00
Faculty Positions	12.11
Oahu	
Specialist Type Faculty: #82550, #82985, #83320, #83513, #84006, #84911, #84321	
Research Type Faculty: #82047, #83067, #83884, #84041, #84316	
Instructional Faculty: #82139, #84138, #85510, #85543, #85547, #85548, #82976	
Agent Type Faculty: #84489, #85551	
Maui	
Agent Type Faculty: #85530	
Hawaii	
Research Type Faculty: #83542	
Agent Type Faculty: #82722, #83462, #85538	
Kauai	
Research Type Faculty: #83840	
Instructional Type Faculty: #85505	
Agent Type Faculty: #83816	

OFFICE OF THE ASSOCIATE DEAN FOR
ACADEMIC AND STUDENT AFFAIRS

STATE OF HAWAIʻI
UNIVERSITY OF HAWAIʻI
UNIVERSITY OF HAWAIʻI AT MĀNOA
COLLEGE OF TROPICAL AGRICULTURE AND
HUMAN RESOURCES
ORGANIZATION CHART

DEPARTMENT OF TROPICAL PLANT AND SOIL SCIENCE
Org Code: MATPSS

DEPARTMENT OF TROPICAL PLANT AND SOIL SCIENCE
CHART VIII

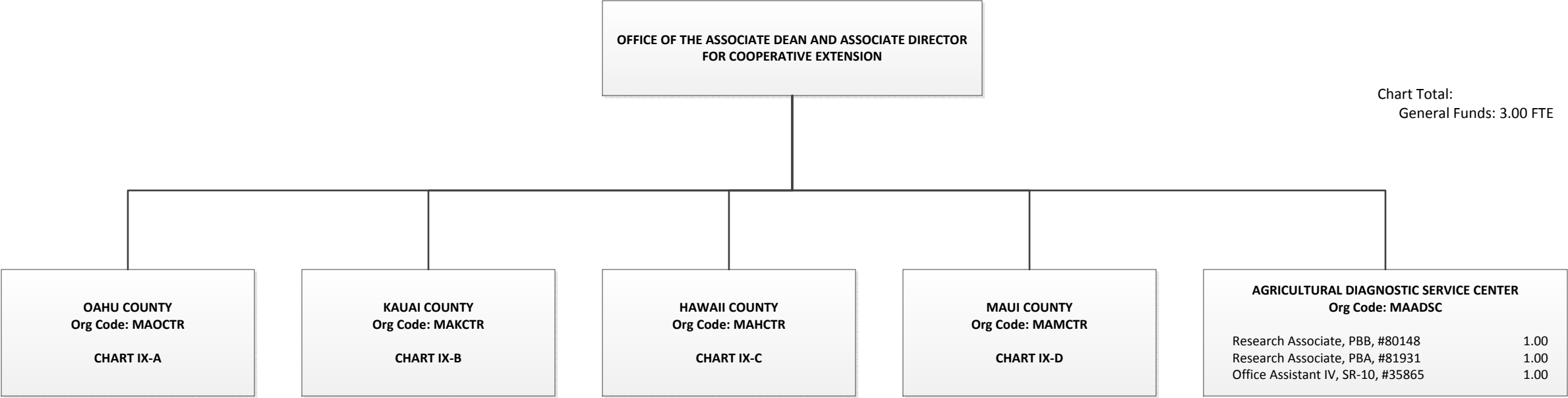
Chairperson (Appointed from among faculty position)	
Secretary II, SR-14, #00793	1.00
Office Assistant IV, SR-10, #00399	1.00
Administrative & Fiscal Support Specialist, PBA. #77795	1.00
Research Associate, PBB, #80270, #80313	2.00
Agr Research Technician V, SR-16, #11019	1.00
Agr Research Technician IV, SR-14, #00397, #05392, #15512	3.00
Graduate Assistants:	1.00
#88171, #88423, #85388T	.50T
Faculty Positions	19.71
Oahu	
Specialist Type Faculty:	
#82598, #83159, #83304, #83388, #83682, #84501, #84916, #85555	
Research Type Faculty:	
#82023, #82240, #82464, #82747, #83260, #83740, #83938, #84408, #84420, #84481	
Instruction Type Faculty	
#83515, #86275	
Agent Type Faculty:	
#82687, #82704, #82881, #85563, #85778	
Maui	
Research Type Faculty:	
#84530	
Agent Type Faculty:	
#83848, #84075, #85477, #87584	
Hawaii	
Research Type Faculty:	
#83073, #83286, #84354	
Instruction Type Faculty	
#84067	
Agent Type Faculty:	
#82758, #82951, #83054, #84648	
Kauai	
Agent Type Faculty:	
#82196	

Chart Total:
General Funds: 29.71 FTE
General Funds (Auth Temp): 0.50 FTE

STATE OF HAWAIʻI
UNIVERSITY OF HAWAIʻI
UNIVERSITY OF HAWAIʻI AT MĀNOA
COLLEGE OF TROPICAL AGRICULTURE AND
HUMAN RESOURCES
ORGANIZATION CHART

COUNTY ADMINISTRATION
CHART IX

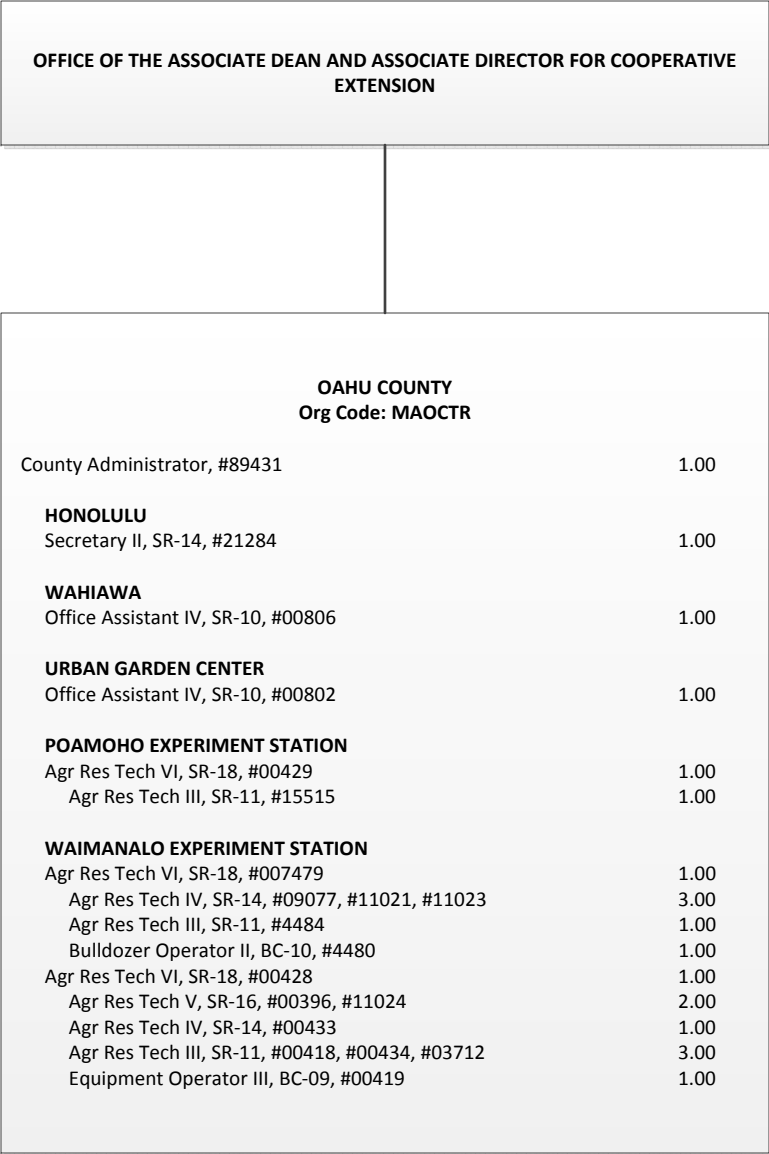
Chart Total:
General Funds: 3.00 FTE



STATE OF HAWAI`I
UNIVERSITY OF HAWAI`I
UNIVERSITY OF HAWAI`I AT MĀNOA
COLLEGE OF TROPICAL AGRICULTURE AND
HUMAN RESOURCES
ORGANIZATION CHART

OAHU COUNTY
CHART IX-A

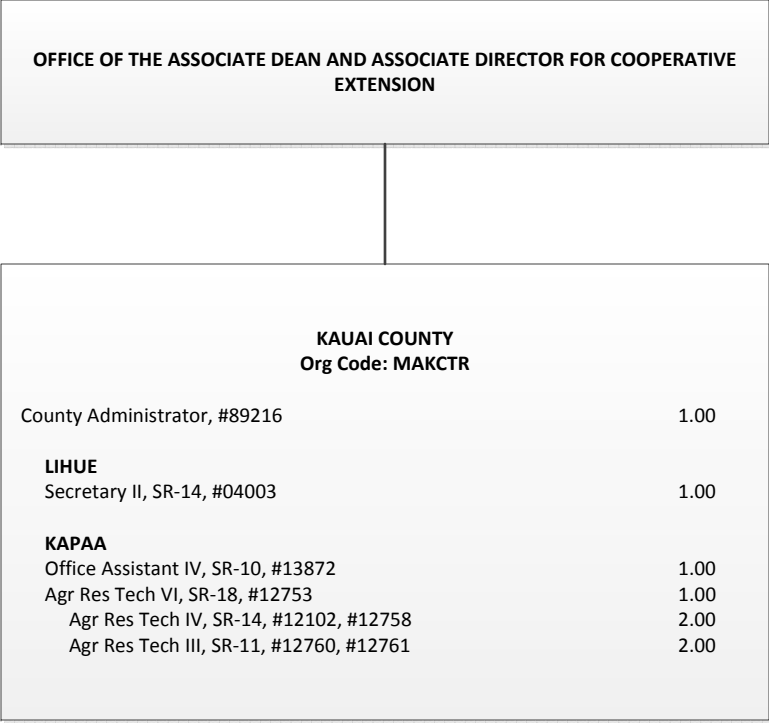
Chart Total:
General Funds: 31.00 FTE



STATE OF HAWAI`I
UNIVERSITY OF HAWAI`I
UNIVERSITY OF HAWAI`I AT MĀNOA
COLLEGE OF TROPICAL AGRICULTURE AND
HUMAN RESOURCES
ORGANIZATION CHART

KAUAI COUNTY
CHART IX-B

Chart Total:
General Funds: 8.00 FTE



OFFICE OF THE ASSOCIATE DEAN AND ASSOCIATE DIRECTOR FOR COOPERATIVE EXTENSION		
HAWAII COUNTY Org Code: MAHCTR		
County Administrator, #89213		1.00
KOMOHANA		
Secretary II, SR-14, #13871		1.00
Office Assistant III, SR-08, #00791		1.00
KONA		
Office Assistant IV, SR-10, #900583		1.00
KAMUELA		
Office Assistant IV, SR-10, #00799		1.00
HAWAII COUNTY TECHNICAL SUPPORT Org Code: MAHTTR		
Educational Specialist, PBB, #80311		1.00
EAST HAWAII		
Agr Res Tech VI, SR-18, #12099		1.00
WAIAKEA		
Agr Res Tech V, SR-16, #12101, #12094, #14166		3.00
Agr Res Tech IV, SR-14, #12096, #12767, #14168, #12098, #15497		5.00
Agr Res Tech III, SR-11, #17602		1.00
Building Maintenance Worker I, BC-09, #12095		1.00
VOLCANO		
Agr Res Tech V, SR-16, #13206		1.00
Agr Res Tech IV, SR-14, #12097		1.00
MALAMA-KI		
Agr Res Tech III, SR-11, #12765		1.00
WEST HAWAII		
Agr Res Tech VI, SR-18, #13530		1.00
MEALANI		
Agr Res Tech V, SR-16, #13534		1.00
Agr Res Tech IV, SR-14, #12100		1.00
Agr Res Tech III, SR-11, #13205, #44868. #44867		3.00
HAMAKUA		
KONA		
Agr Res Tech V, SR-16, #00409		1.00
Agr Res Tech IV, SR-14, #22912		1.00

STATE OF HAWAI`I
UNIVERSITY OF HAWAI`I
UNIVERSITY OF HAWAI`I AT MĀNOA
COLLEGE OF TROPICAL AGRICULTURE AND
HUMAN RESOURCES
ORGANIZATION CHART

HAWAII COUNTY
CHART IX-C

Chart Total:
General Funds: 31.00 FTE

Civil Service positions abolished #12766, #13536,
#14590 (3.00)

STATE OF HAWAI`I
UNIVERSITY OF HAWAI`I
UNIVERSITY OF HAWAI`I AT MĀNOA
COLLEGE OF TROPICAL AGRICULTURE AND
HUMAN RESOURCES
ORGANIZATION CHART

MAUI COUNTY
CHART IX-D

Chart Total:
General Funds: 16.00 FTE

