

GRAND TOTAL BY FUND

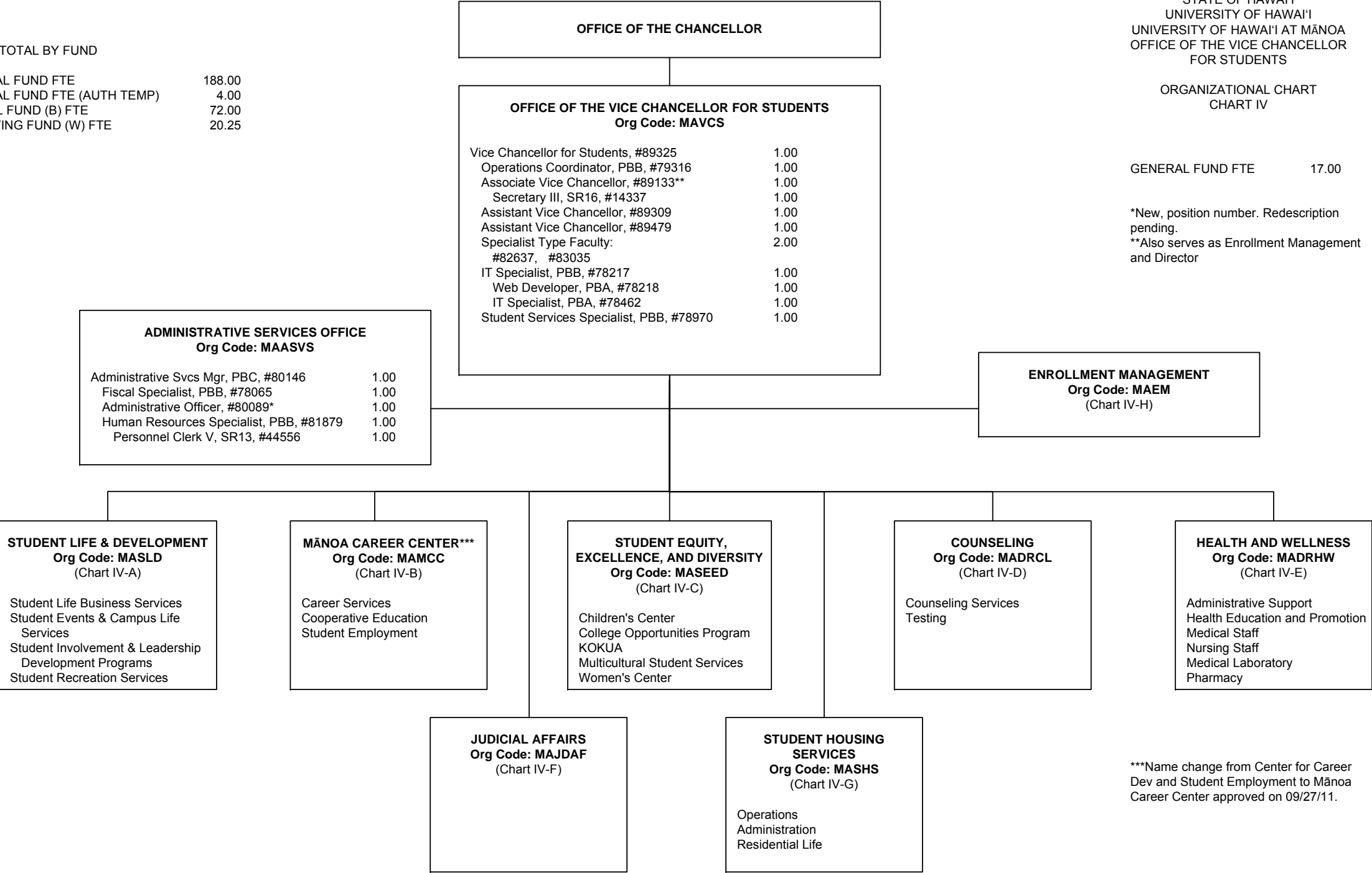
GENERAL FUND FTE	188.00
GENERAL FUND FTE (AUTH TEMP)	4.00
SPECIAL FUND (B) FTE	72.00
REVOLVING FUND (W) FTE	20.25

STATE OF HAWAI'I
UNIVERSITY OF HAWAI'I
UNIVERSITY OF HAWAI'I AT MĀNOA
OFFICE OF THE VICE CHANCELLOR
FOR STUDENTS

ORGANIZATIONAL CHART
CHART IV

GENERAL FUND FTE 17.00

*New, position number. Redescription pending.
**Also serves as Enrollment Management and Director



***Name change from Center for Career Dev and Student Employment to Mānoa Career Center approved on 09/27/11.

OFFICE OF THE CHANCELLOR

OFFICE OF THE VICE CHANCELLOR FOR STUDENTS

STUDENT LIFE & DEVELOPMENT
Org Code: MASLD

Director of Student Affairs (SLD), #89190	1.00
Student Services Specialist, PBA, #78447	1.00
Computer Specialist, PBB, #81137 (W)	1.00 (W)

STUDENT LIFE BUSINESS SERVICES
Org Code: MABSSL

Student Services Specialist, PBB, #79129	1.00
Administrative Svcs Manager, PBB, #80163(B)	1.00 (B)
Administrative & Fiscal Support Specialist, PBA: #78450 (B), #79408 (B), #80649 (B)	3.00 (B)
Student Services Specialist, PBB, #80660(B)	1.00 (B)
Bldg Maintenance Worker, BC09, #28597(B)	1.00 (B)
Bldg & Grounds Utility Worker, BC05, #44085 (B), #44109 (B), #45379 (B)	3.00 (B)
Student Services Specialist, PBA, #78831(B)	1.00 (B)
Janitor II, BC02, #25329 (B), #25392 (B), #44089 (B), #46560 (B), #900563 (B)***, #900564 (B)***	6.00 (B)
Student Services Specialist, PBB, #79661(B)	1.00 (B)

STUDENT EVENTS &
CAMPUS LIFE SERVICES
Org Code: MASESL

Specialist Type Faculty, #88328 (B)	1.00 (B)
Specialist Type Faculty, #82864	1.00
Specialist Type Faculty, #70084 (W)	1.00 (W)
Student Services Specialist, PBB, #81486 (W)	1.00 (W)
Specialist Type Faculty, #88334 (W)	1.00 (W)
Student Services Specialist, PBB, #78991(B)	1.00 (B)
Student Services Specialist, PBA: #80631 (B), #80942 (B)	2.00 (B)
Specialist Type Faculty, #88765 (B)	1.00 (B)

STUDENT INVOLVEMENT &
LEADERSHIP DEVELOPMENT PROGRAMS
Org Code: MASISL

Specialist Type Faculty, #83705	1.00
Specialist Type Faculty: #70078, #82597	2.00
Student Services Specialist, PBB, #81510 (W)	1.00 (W)

STUDENT RECREATION SERVICES
Org Code: MASRSL

Specialist Type Faculty, #85083	1.00
Student Services Specialist, PBB, #77071	1.00
Specialist Type Faculty, #83512	1.00
Office Assistant III, SR08, #26460	1.00
Student Services Specialist, PBB, #80025 (B)	1.00 (B)
Student Services Specialist, PBA, #79313 (B)	1.00 (B)
Student Services Specialist, PBB, #93501F (B)	1.00 (B)

STATE OF HAWAI'I
UNIVERSITY OF HAWAI'I
UNIVERSITY OF HAWAI'I AT MĀNOA
OFFICE OF THE VICE CHANCELLOR
FOR STUDENTS
STUDENT LIFE & DEVELOPMENT

ORGANIZATIONAL CHART
CHART IV-A

GENERAL FUND FTE	11.00
SPECIAL FUND FTE (B)	25.00
REVOLVING FUND FTE (W)	5.00

*** Position recently established, pending
funding

OFFICE OF THE CHANCELLOR

OFFICE OF THE VICE CHANCELLOR FOR STUDENTS

MĀNOA CAREER CENTER**
Org Code: MAMCC

Student Services Specialist, PBD, #80661	1.00
Secretary II, SR14, #11046	1.00
IT Specialist, PBA, #78604	1.00

CAREER SERVICES
Org Code: MACSCD

Specialist Type Faculty: #70072, #82701, #88125, #88325,	4.00
Student Services Specialist, PBB, #81434	1.00

COOPERATIVE EDUCATION
Org Code: MACECD

Specialist Type Faculty #88117	1.00
Specialist Type Faculty: #82642, #82644	2.00
Office Assistant IV, SR10, #46550	1.00

STUDENT EMPLOYMENT SERVICES
Org Code: MASECD

Student Services Specialist, PBB, #81481	1.00
Student Services Specialist, PBA, #80453T	1.00 T

STATE OF HAWAI'I
UNIVERSITY OF HAWAI'I
UNIVERSITY OF HAWAI'I AT MĀNOA
OFFICE OF THE VICE CHANCELLOR
FOR STUDENTS
MĀNOA CAREER CENTER

ORGANIZATIONAL CHART
CHART IV-B

GENERAL FUND FTE 15.00*
GENERAL FUND FTE (AUTH TEMP) 1.00

*Abolished position #78605 & #88326 (2.00 FTE)

**Name change from Center for Career
Dev and Student Employment to Mānoa
Career Center approved on 09/27/11.

OFFICE OF THE CHANCELLOR

OFFICE OF THE VICE CHANCELLOR FOR STUDENTS

STUDENT EQUITY, EXCELLENCE AND DIVERSITY
Org Code: MASEED

Director of Student Affairs (SEED), #89298	1.00
Fiscal Specialist, PBB: #78525, #81088	2.00
Specialist Type Faculty: #70068, #70069, #70070, #70071, #82594	5.00
Educational Specialist, PBB, #81063	1.00
Program Manager, PBB, #81904	1.00
Student Services Specialist, PBB, #78524	1.00
Office Assistant III, SR08, #43052	1.00

STATE OF HAWAI'I
UNIVERSITY OF HAWAI'I
UNIVERSITY OF HAWAI'I AT MĀNOA
OFFICE OF THE VICE CHANCELLOR
FOR STUDENTS
STUDENT EQUITY, EXCELLENCE AND
DIVERSITY

ORGANIZATIONAL CHART
CHART IV-C

GENERAL FUND FTE	37.00*
GENERAL FUND FTE (AUTH TEMP)	3.00
SPECIAL FUND FTE (B)	4.00

*Abolished position #70073 (1.00 FTE)

CHILDREN'S CENTER
Org Code: MACC

Child Care Site Director, PBB, #80232	1.00
Administrative Officer, PBA, #80739 (B)	1.00 (B)
Educational Associate, PBB, #80029	1.00
Child Care Cntr Teacher, PBB: #80109	1.00
#80234T, #80455T,	2.00 T
#80541 (B), #80611 (B)	2.00 (B)
Child Care Cntr Teacher, PBA: #78917, #80233,	2.00
#80424T,	1.00 T
#80588 (B)	1.00 (B)

COLLEGE OPPORTUNITIES PROGRAM
Org Code: MACOP

Specialist Type Faculty, #83548	1.00
Student Services Specialist, PBB, #80606	1.00
Student Services Specialist, PBA, #78538	1.00
Office Assistant IV, SR10, #23086	1.00

KOKUA
Org Code: MAKOKU

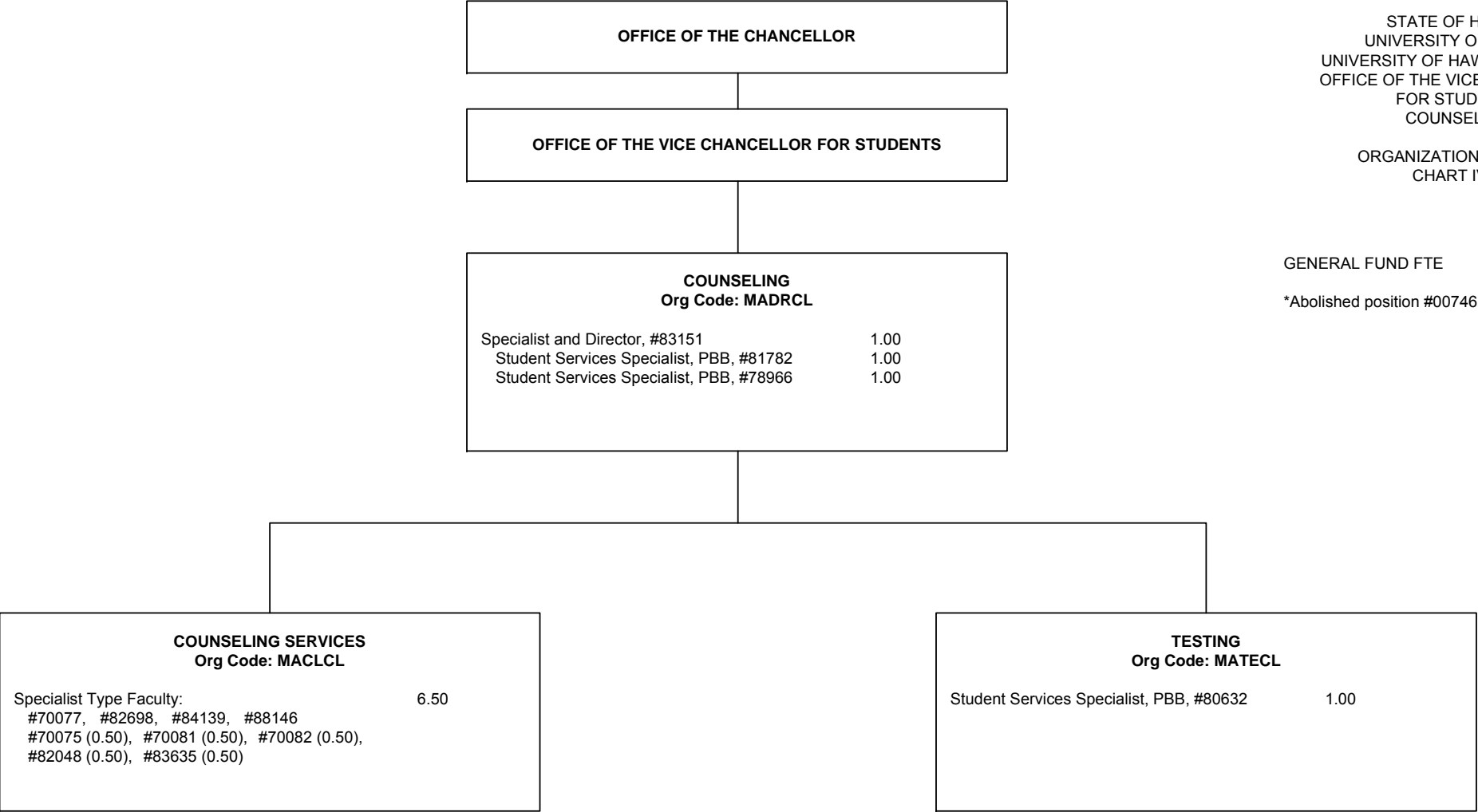
Program Manager, PBC, #80666	1.00
Administrative Officer, PBA, #77032	1.00
Educational Specialist, PBB: #78261, #78262, #80608, #80636, #81566	5.00
Educational Specialist, PBA, #81102	1.00

OFFICE OF MULTICULTURAL STUDENT SERVICES
Org Code: MAMULT

Program Manager, PBB, #80517	1.00
Student Services Specialist, PBA: #81799, #81801	2.00

WOMEN'S CENTER
Org Code: MAWC

Specialist Type Faculty: #70074, #84581, #88333	3.00
Student Services Specialist, PBB, #78526	1.00



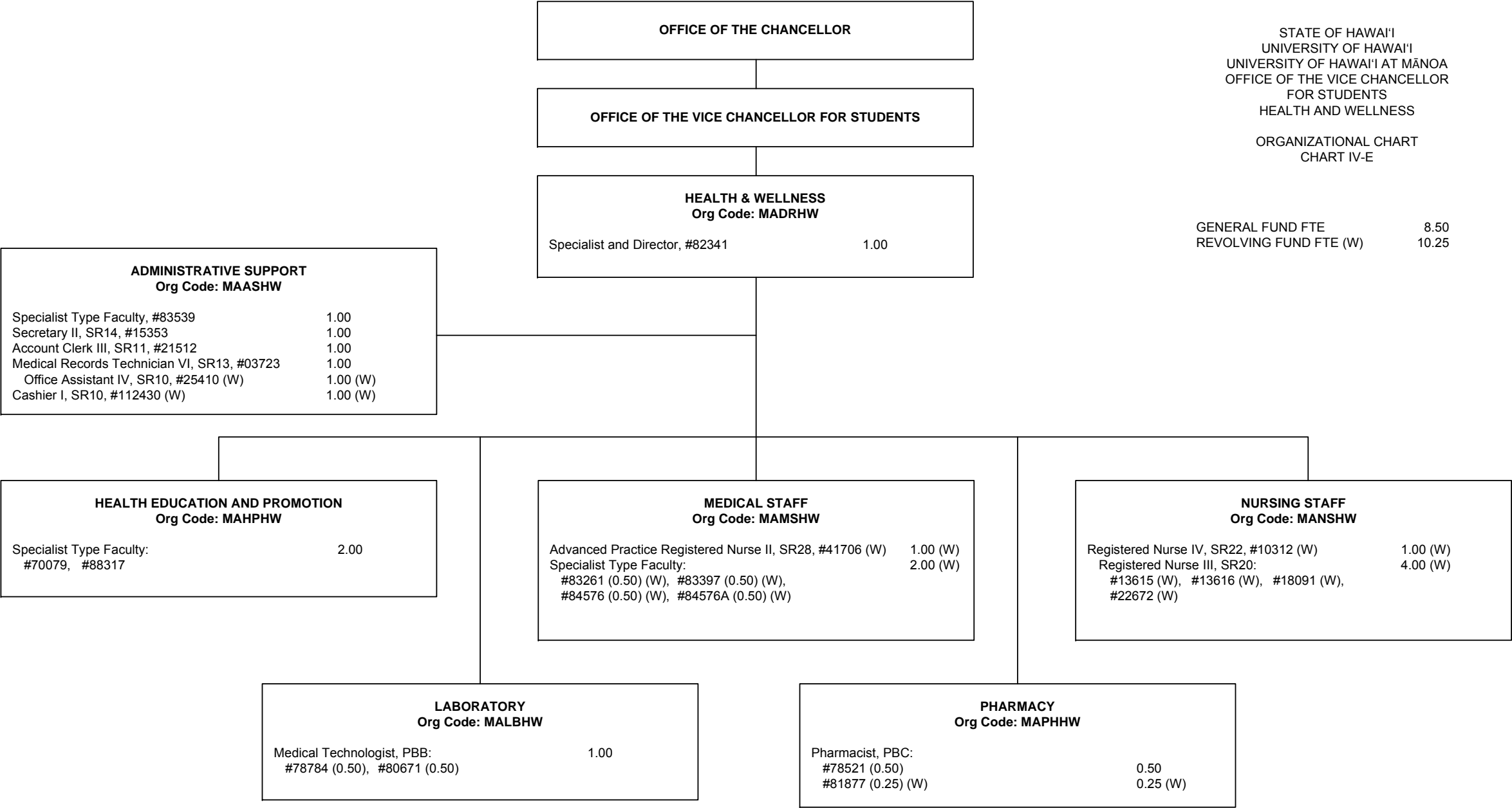
STATE OF HAWAI'I
UNIVERSITY OF HAWAI'I
UNIVERSITY OF HAWAI'I AT MĀNOA
OFFICE OF THE VICE CHANCELLOR
FOR STUDENTS
COUNSELING

ORGANIZATIONAL CHART
CHART IV-D

GENERAL FUND FTE 11.50*

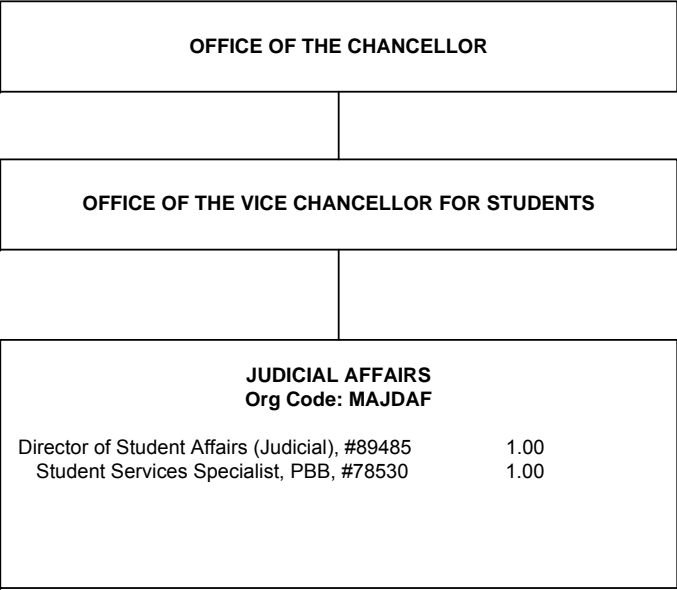
*Abolished position #00746 (1.00 FTE)

GENERAL FUND FTE8.50
REVOLVING FUND FTE (W)10.25

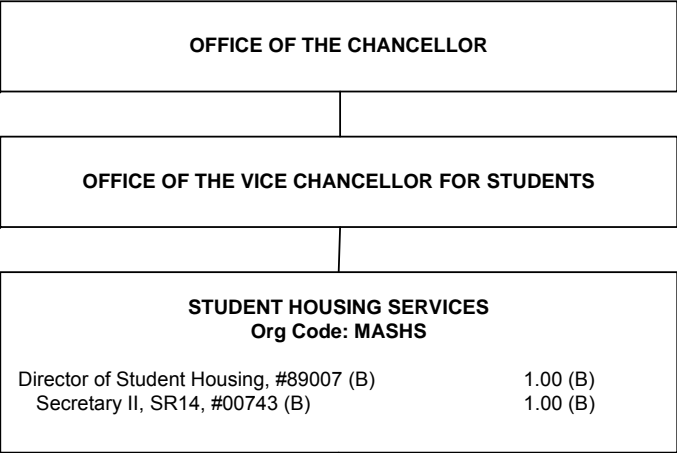


STATE OF HAWAI'I
UNIVERSITY OF HAWAI'I
UNIVERSITY OF HAWAI'I AT MĀNOA
OFFICE OF THE VICE CHANCELLOR
FOR STUDENTS
JUDICIAL AFFAIRS

ORGANIZATIONAL CHART
CHART IV-F



GENERAL FUND FTE 2.00



STATE OF HAWAI'I
UNIVERSITY OF HAWAI'I
UNIVERSITY OF HAWAI'I AT MĀNOA
OFFICE OF THE VICE CHANCELLOR
FOR STUDENTS
STUDENT HOUSING SERVICES

ORGANIZATIONAL CHART
CHART IV-G

GENERAL FUND FTE	6.00
SPECIAL FUND FTE (B)	45.00

OPERATIONS	
Org Code: MAOPSH	
Auxiliary & Facilities Services Manager, PBB, #80629 (B)	1.00 (B)
Auxiliary & Facilities Services Officer, PBA: #78141 (B), #79641 (B)	2.00 (B)
Office Assistant III, SR08, #24249 (B)	1.00 (B)
MAINTENANCE STAFF:	
Building Maintenance Supervisor I, F109, #900548 (B)*	1.00 (B)
Building Maintenance Worker I, BC09: #031242 (B), #110585 (B), #013578 (B), #031245 (B)	4.00 (B)
#900513, #900514	2.00
Plumber I, BC10, #900603 (B)	1.00 (B)
Electrician I, BC10, #900604 (B)	1.00 (B)
GROUNDS STAFF:	
Groundskeeper II, WS02, #24251 (B)	1.00 (B)
Groundskeeper I, BC02, #31246 (B)	1.00 (B)
PROJECT & PLANT MANAGEMENT SUPPORT:	
Registered Architect, PBB, #77005 (B)	1.00 (B)
Environmental & Health Safety Sp, PBA, #81680 (B) ¹	1.00 (B)

ADMINISTRATION	
Org Code: MAADSH	
Administrative Svcs Mgr, PBB, #81612 (B)	1.00 (B)
FISCAL:	
Fiscal Specialist, Senior, PBB, #80193 (B)	1.00 (B)
Adm & Fiscal Supp Sp, PBA, #77029 (B)	1.00 (B)
Cashier I, SR10, #28336 (B)	1.00 (B)
Office Assistant IV, SR10, #18701 (B)	1.00 (B)
ASSIGNMENTS:	
Administrative Officer, PBB, #79170 (B)*	1.00 (B)
Student Services Specialist, PBA, #78732	1.00
Student Services Specialist, PBA, #79330 (B)	1.00 (B)
Office Assistant V, SR12, #34981 (B)	1.00 (B)
Office Assistant III, SR08: #18115 (B), #15287 (B)	2.00 (B)
CONFERENCES:	
PERSONNEL:	
Human Resources Sp, PBB, #81103 (B)	1.00 (B)
Human Resources Sp, PBA, #78729	1.00
INFORMATION TECHNOLOGY:	
IT Specialist, PBB: #81361 (B), #78311 (B)	2.00 (B)

RESIDENTIAL LIFE	
Org Code: MARLSH	
Residence Life Mgr, PBB, #80630 (B)	1.00 (B)
Clerk Stenographer II, SR09, #24250 (B)**	1.00 (B)
Office Assistant III, SR08: #28545 (B), #23582 (B)	2.00 (B)
TRAINING & LEADERSHIP:	
Residence Life Specialist, PBB, #81611 (B)	1.00 (B)
Student Housing Coordinator, PBB, #80598 (B)**	1.00 (B)
FAMILY RELATIONS & OFF-CAMPUS HOUSING:	
RESIDENTIAL AREAS:	
Residence Life Specialist, PBB: #80594 (B), #80597 (B)	2.00 (B)
Residence Life Specialist,, PBA, #80924 (B)	1.00 (B)
HALL STAFF:	
Residence Life Specialist, PBA: #78728 (B), #78959 (B), #78960 (B), #78961 (B), #78962 (B), #80595 (B)	6.00 (B)
#78730, #78731	2.00

* Pending establishment
** To be redescribed

Position 99003F authorized general fund position to be allocated.
¹ Supervised by Environmental Health & Safety

OFFICE OF THE CHANCELLOR

OFFICE OF THE VICE CHANCELLOR FOR STUDENTS

ENROLLMENT MANAGEMENT
Org Code: MAEM

Associate Vice Chancellor, #89133***
Secretary II, SR14*
Administrative Officer, PBB, #78674 1.00
Account Clerk III, SR-11*

INFORMATION AND COMPUTER SERVICES
Org Code: MAITEM

IT Manager, PBB, #80018** 1.00
IT Specialist, PBB:
#78228**, #80017, #81134 3.00

OFFICE OF ADMISSIONS
Org Code: MAOAE

Admissions Manager, PBC, #81154** 1.00
Secretary II, SR14, #14866 1.00
Clerk Supervisor III, SR14, #00748 1.00
Office Assistant IV, SR10: 7.00
#00772, #12842, #13495, #13496, #18009, #26538,
#900015
Office Assistant III, SR8, #900016 1.00
Admissions Specialist, PBB: 5.00
#78658, #80626, #81071, #81414, #81734
Admissions Specialist, PBB, #80625 1.00
Office Assistant IV, SR10, #11496 1.00
Admissions Specialist, PBB, #80530 1.00
Admissions Specialist, PBB, #78660 1.00
Admissions Specialist, PBA: 6.00
#77518, #77519, #77520, #77521, #77885, #78659
Admissions Specialist, PBA: 2.00
#78105, #78192
Admissions Specialist, PBA, #78406 1.00
Office Assistant IV, SR10: 4.00
#15501, #40004, #40005, #900159
Office Assistant III, SR8, #40003 1.00

Admissions Manager, PBC, #80463 1.00
Admissions Specialist, PBB: 3.00
#78702, #78716, #80096
Admissions Specialist, PBA: 3.00
#78703, #78825, #78826
Admin & Fiscal Support Sp, PBA, #78827 1.00

OFFICE OF THE REGISTRAR
Org Code: MARGEM

Registrar, PBC, #81614 1.00

Registrar, Assistant, PBB, #80658 1.00
Registrar, Assistant, PBA, #79064 (W) 1.00 (W)
Student Services Specialist, PBA:
#78405, #78657, 2.00

Registrar, Assistant, PBA, #78828 1.00
Office Assistant IV, SR10:
#00750, #14864, #15502, #21430, #40006 5.00
#14865(W) 1.00 (W)
Office Assistant III, SR8: 2.00 (W)
#13494 (W), #26539 (W)

Scheduler, SR20, #05837** 1.00
Office Assistant, IV, SR10, #13959** 1.00

STATE OF HAWAI'I
UNIVERSITY OF HAWAI'I
UNIVERSITY OF HAWAI'I AT MĀNOA
OFFICE OF THE VICE CHANCELLOR
FOR STUDENTS
ENROLLMENT MANAGEMENT

ORGANIZATIONAL CHART
CHART IV-H

GENERAL FUND FTE 80.00****
REVOLVING FUND FTE (W) 4.00

****Abolished position numbers 14863, 15265,
17599, 17600, and 22321
(General Funds 5.00)

FINANCIAL AID SERVICES
Org Code: MAFAEM

Financial Aid Manager, PBC, #77250 1.00
Secretary II, SR14, #05737 1.00

Financial Aid Specialist, PBB, #81913 1.00

Financial Aid Specialist, PBB: 7.00
#78225, #78226, #78227, #80922, #81151
#81607, #81609

Financial Aid Specialist, PBA: 6.00
#78760, #78761, #78224, #78951, #81606,
#81608

* New position approved in 2/17/05 reorg; position number to be determined

** Position to be reclassified/redescribed

*** Associate Vice Chancellor position #89133 position count reflected on chart
IV.