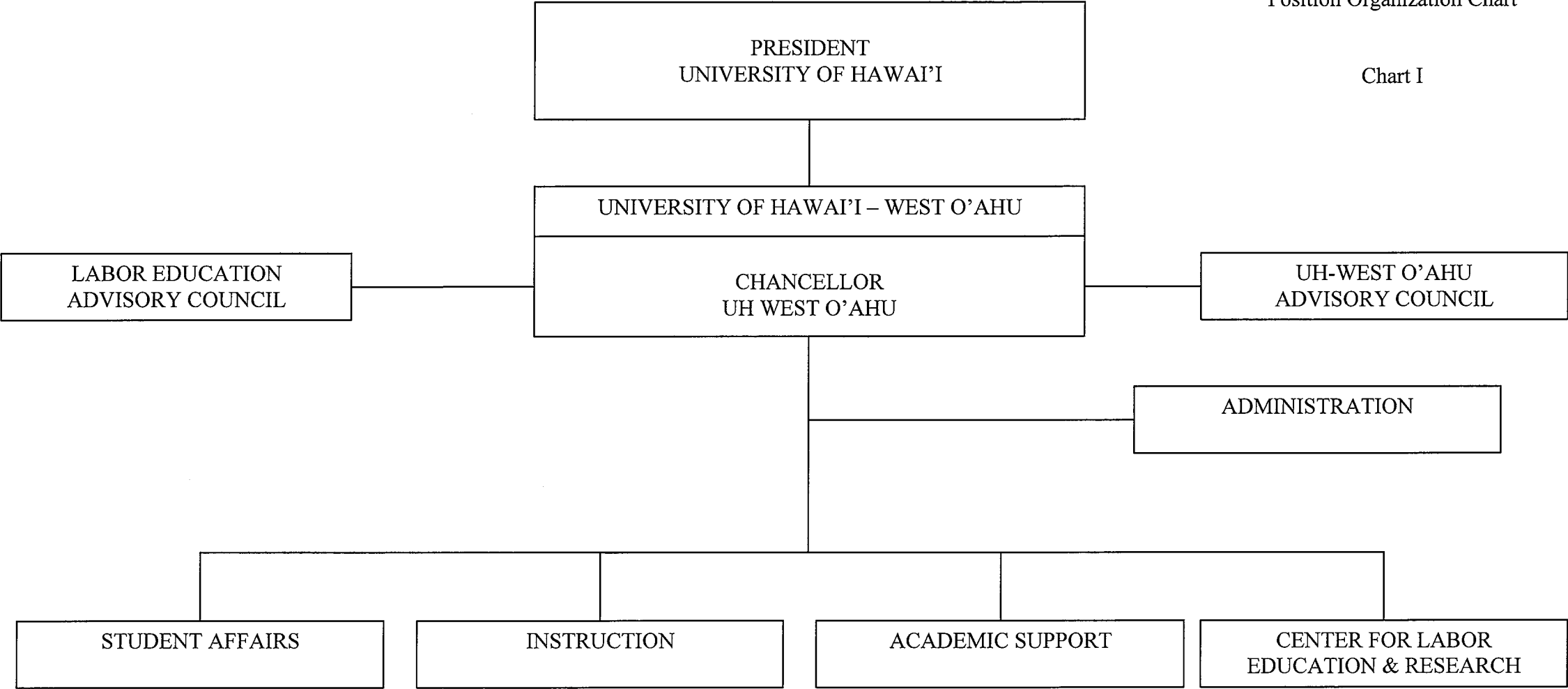


Position Organization Chart

Chart I

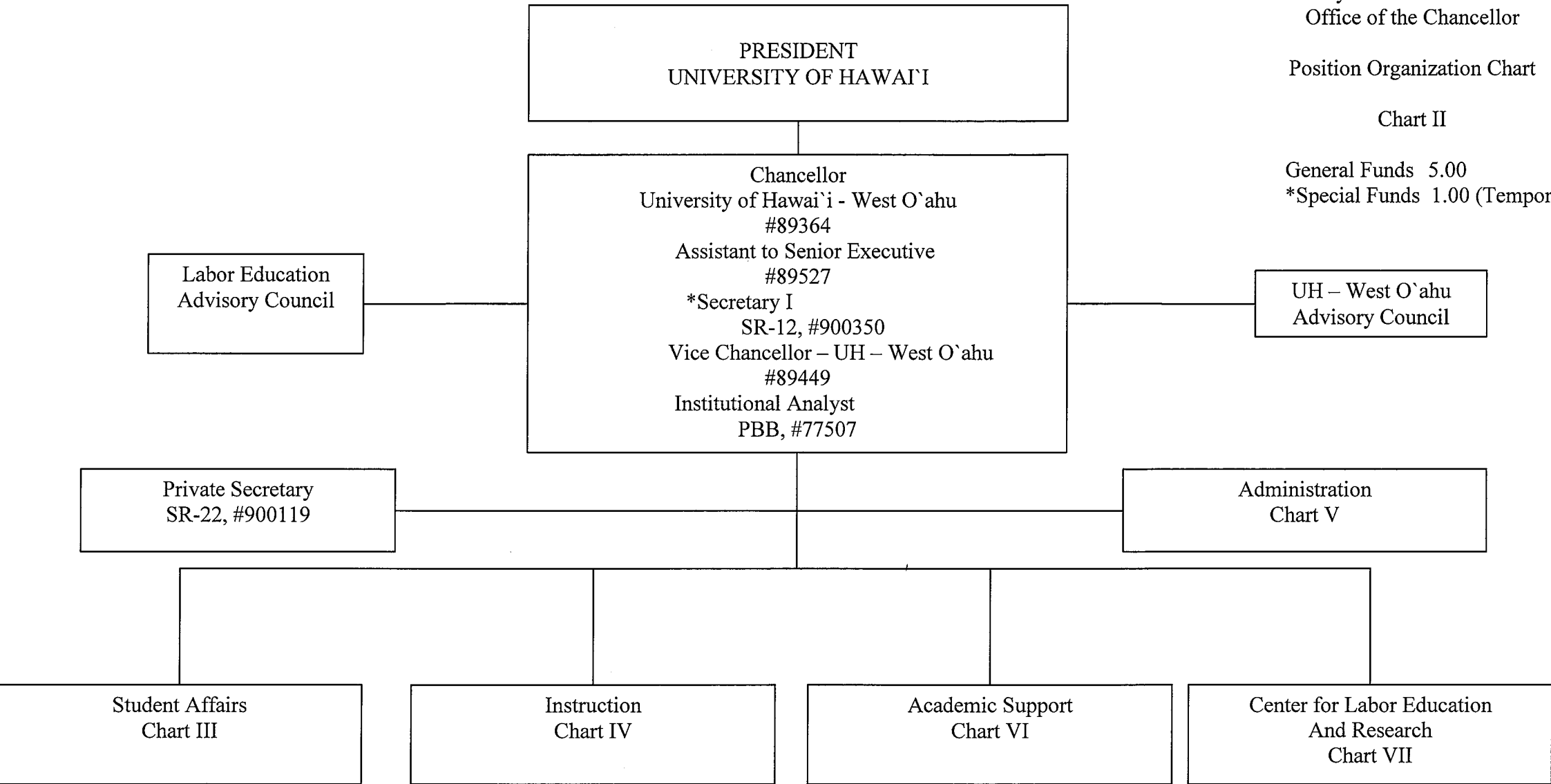


State of Hawai'i
University of Hawai'i
University of Hawai'i - West O'ahu
Office of the Chancellor

Position Organization Chart

Chart II

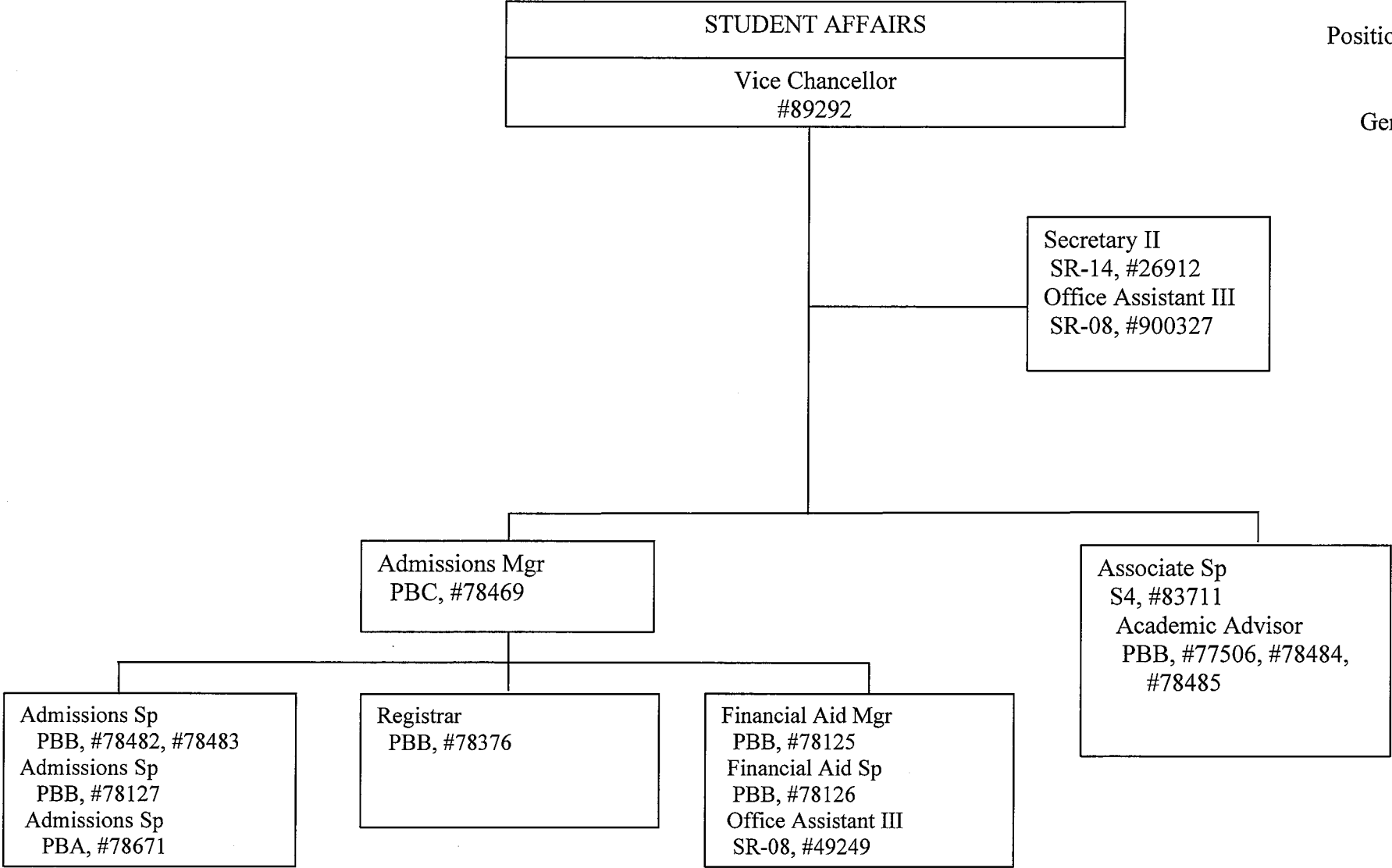
General Funds 5.00
*Special Funds 1.00 (Temporary)



State of Hawai`i
University of Hawai`i
University of Hawai`i - West O`ahu
Student Affairs

Position Organization Chart
Chart III

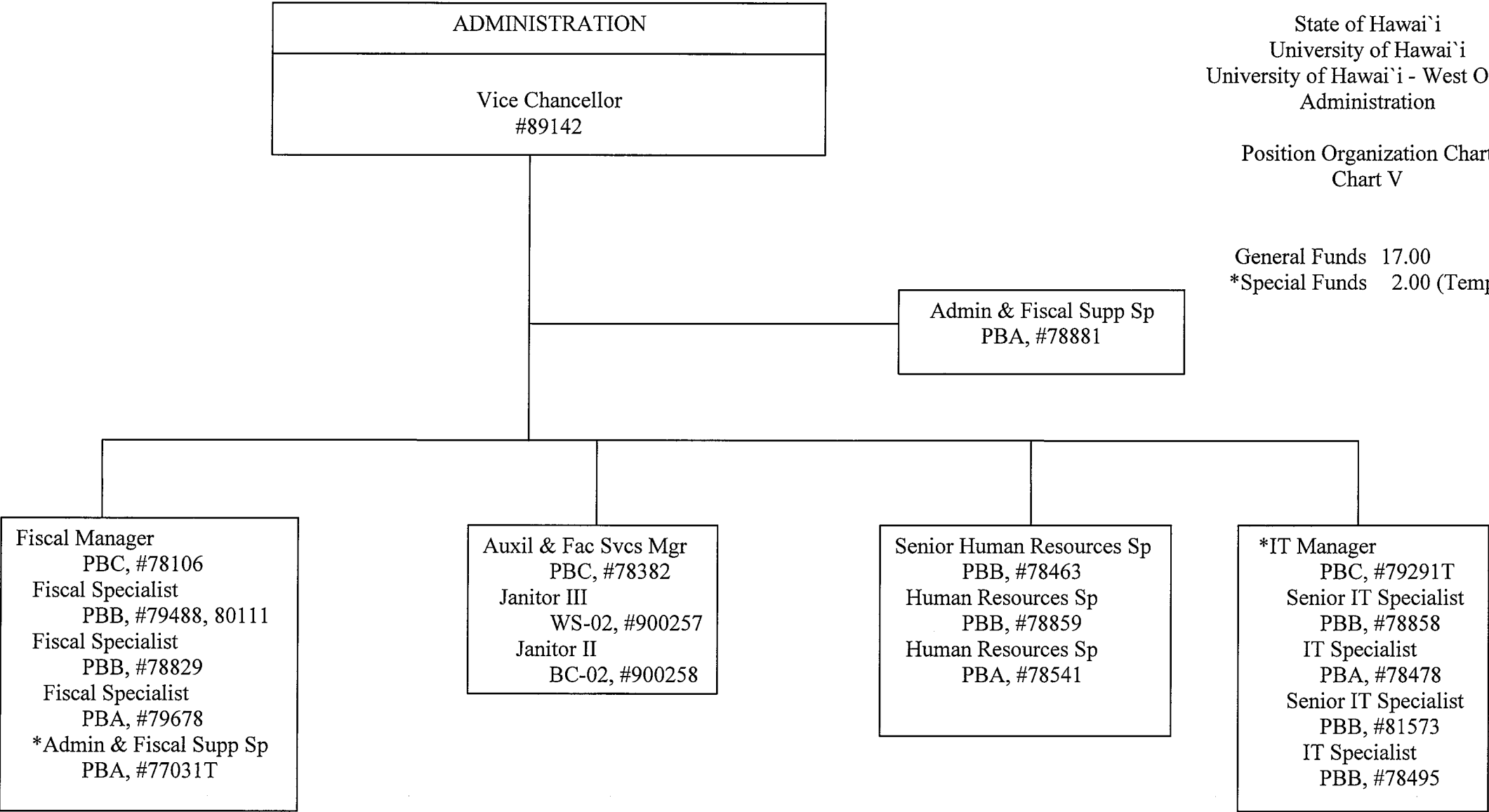
General Funds16.00

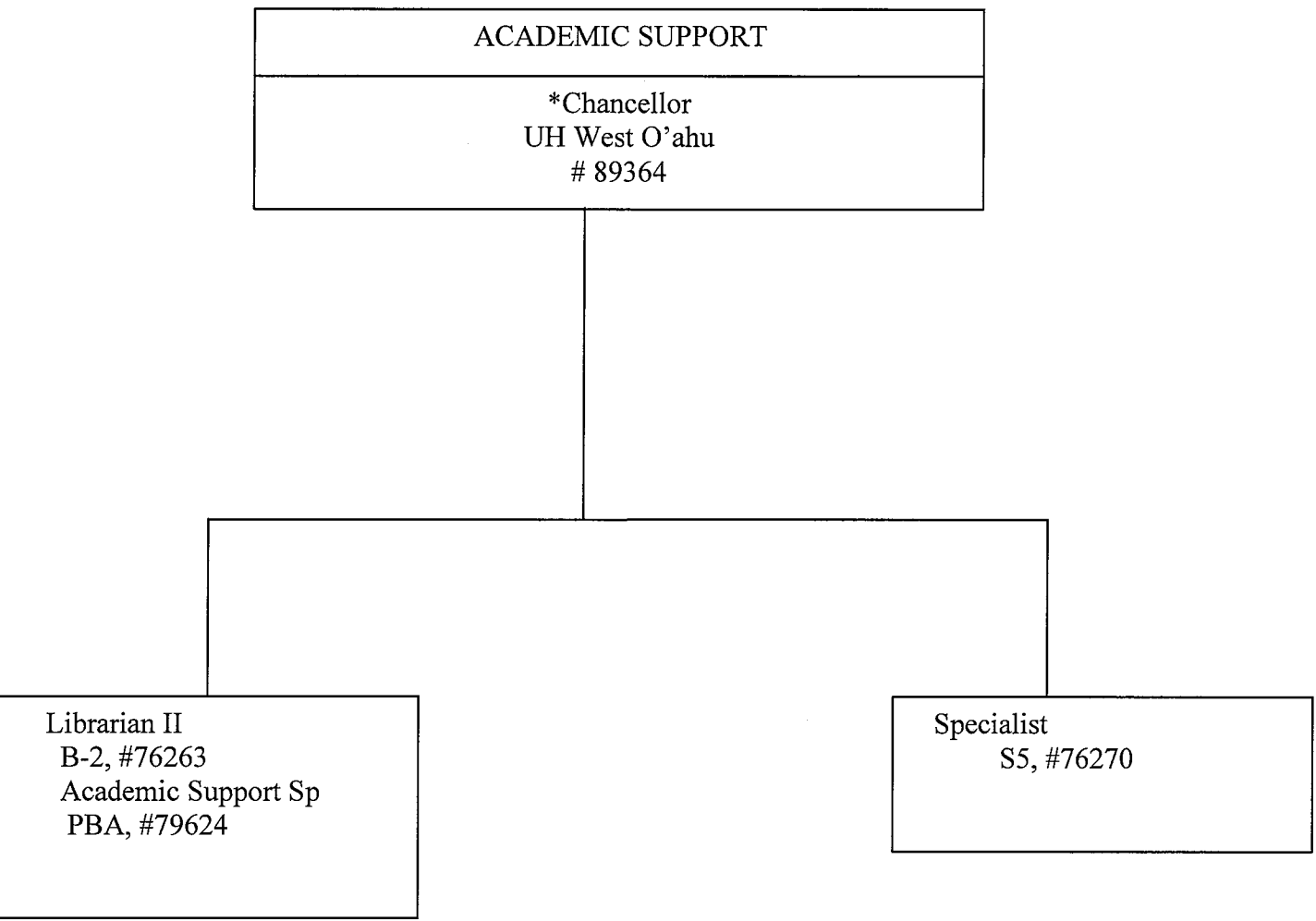


State of Hawai`i
University of Hawai`i
University of Hawai`i - West O`ahu
Administration

Position Organization Chart
Chart V

General Funds 17.00
*Special Funds 2.00 (Temporary)





* Position count not included on this page.

Position Organization Chart

Chart VII

General Funds 5.00

