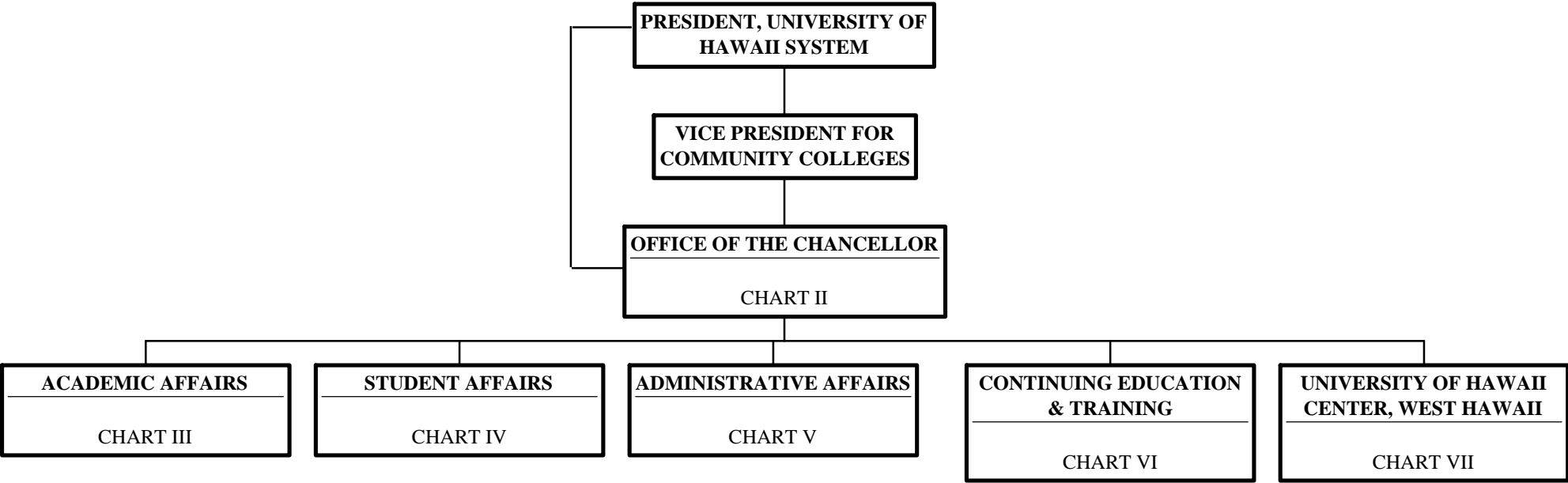


Organization Chart

Chart I



| | <u>Perm</u> | <u>Temp</u> |
|-------------------|-------------|-------------|
| General Fund | 220.00 | 5.00 |
| (B) Special Funds | 1.00 | |

STATE OF HAWAII

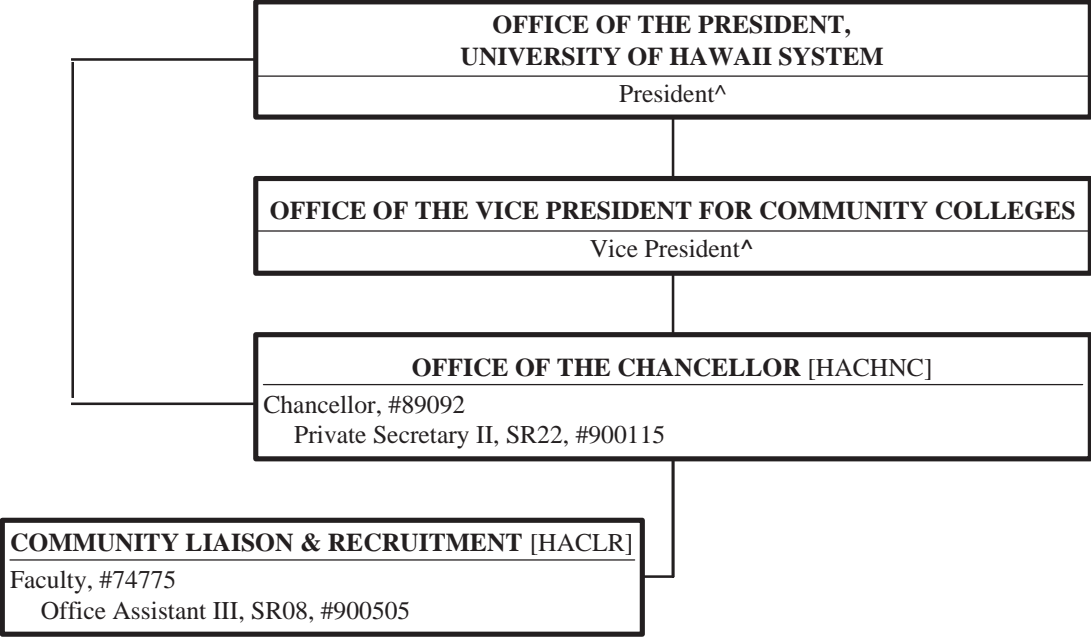
UNIVERSITY OF HAWAII

HAWAII COMMUNITY COLLEGE

OFFICE OF THE CHANCELLOR

Position Organization Chart

Chart II



^ Excluded from position count this chart
\$ To be established

STATE OF HAWAII

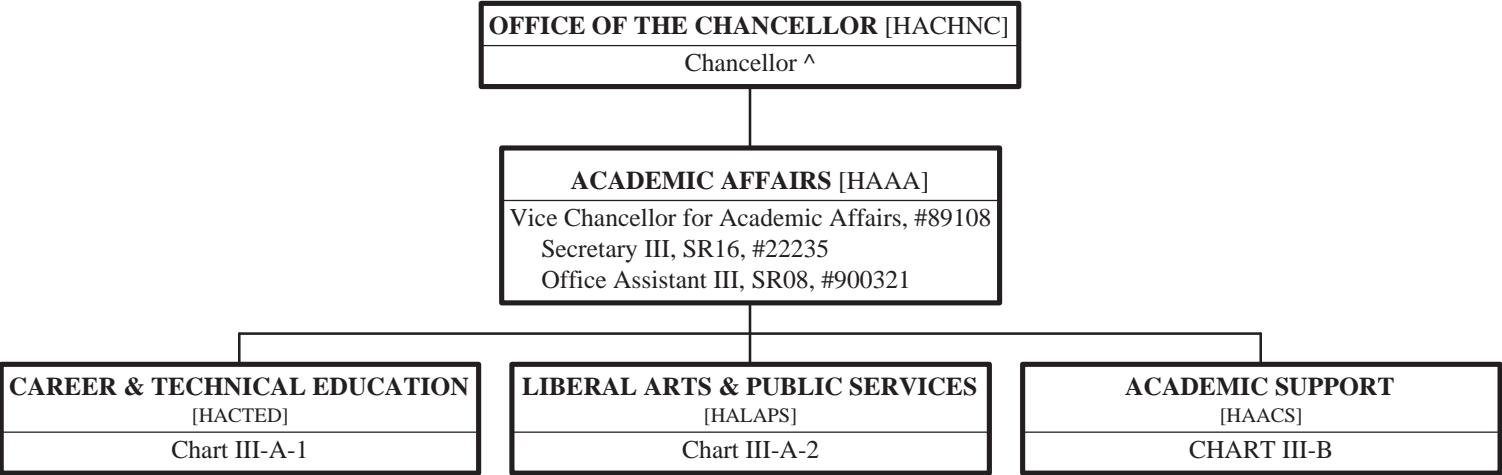
UNIVERSITY OF HAWAII

HAWAII COMMUNITY COLLEGE

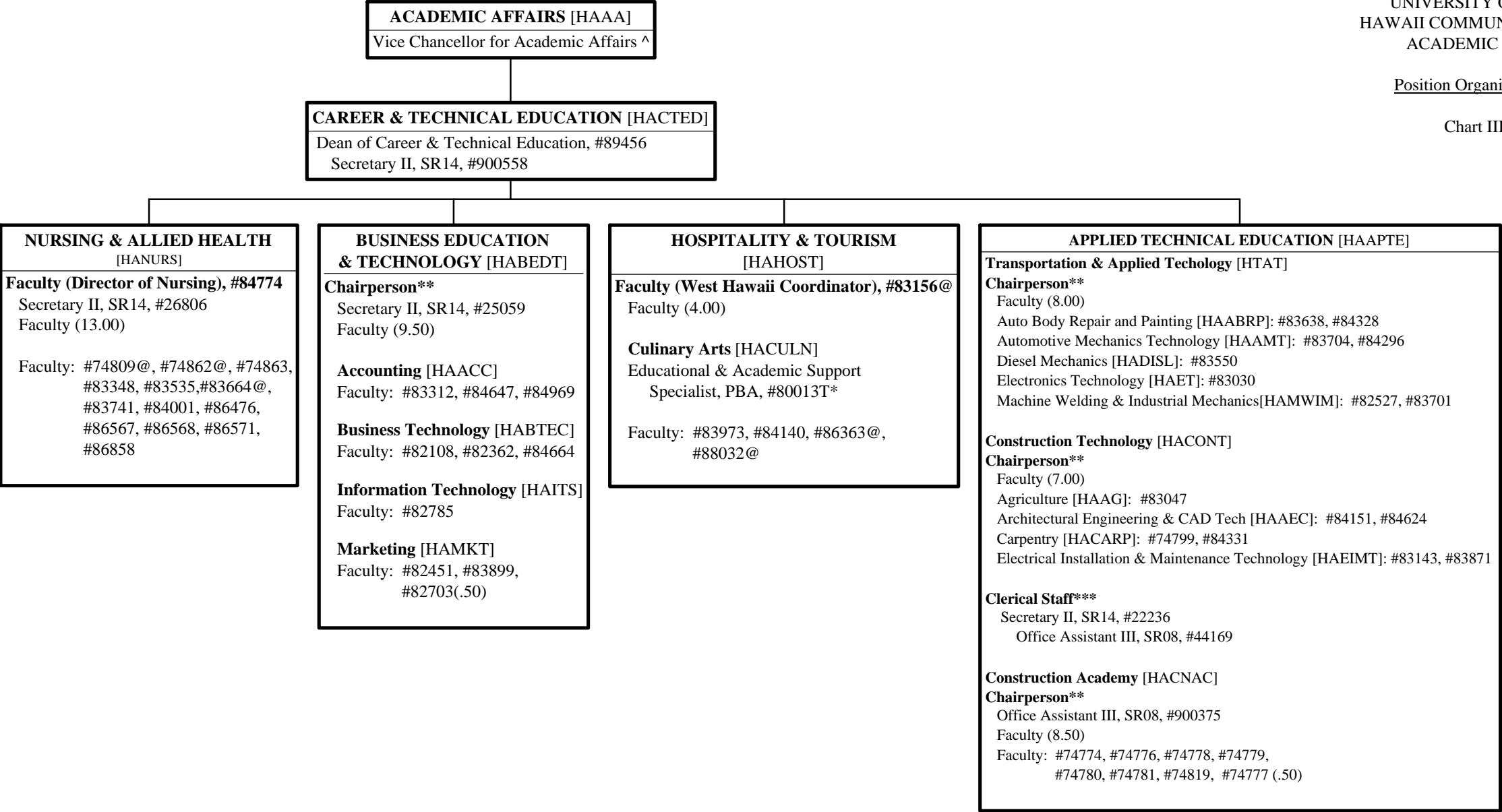
ACADEMIC AFFAIRS

Position Organization Chart

Chart III



^ Excluded from position count this chart



^ Excluded from position count this chart

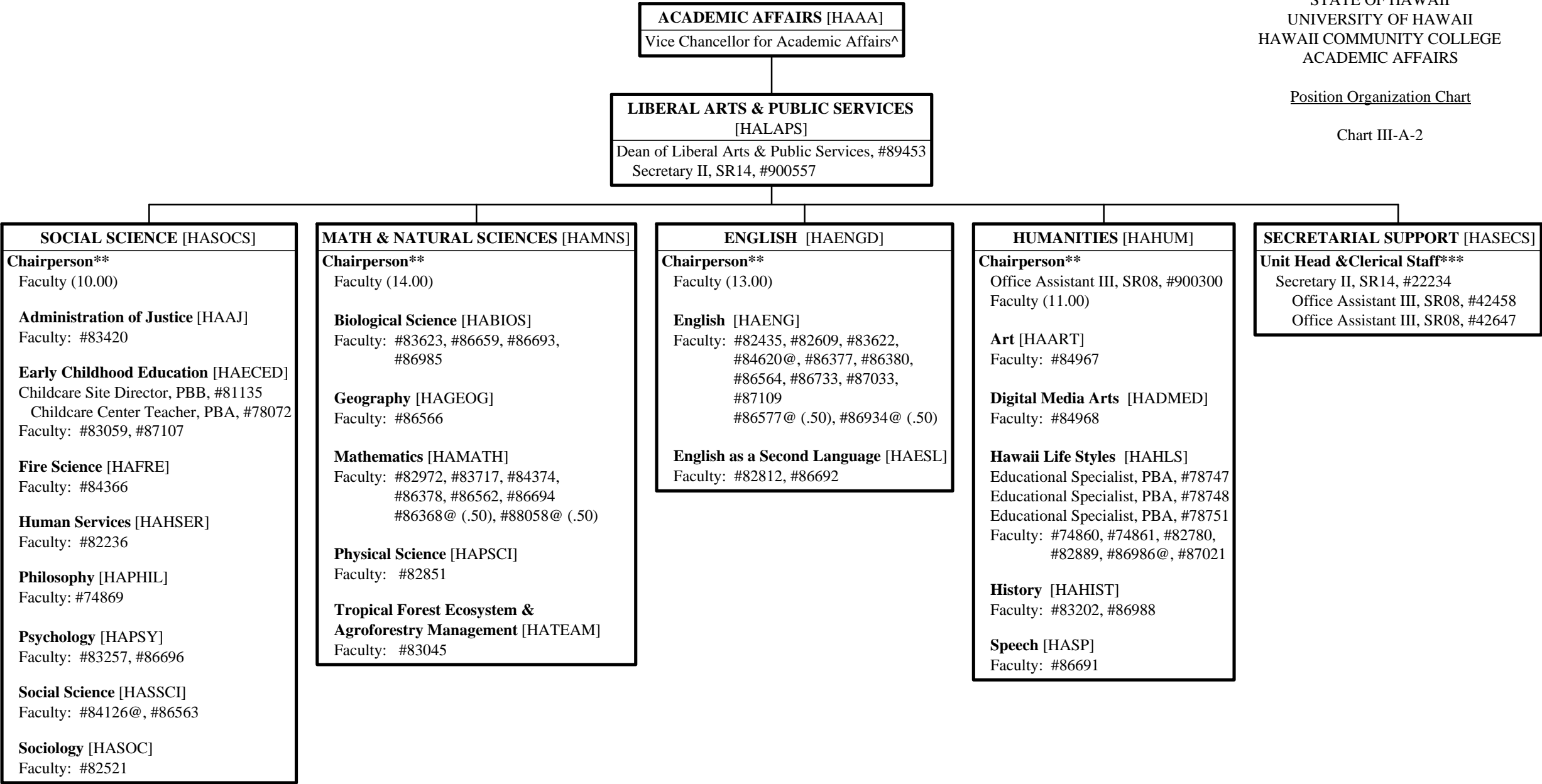
* Temporary Position

** Chairperson is appointed from among faculty positions within the department.

*** Clerical staff serve all units in the division but each position has only one immediate supervisor.

@ Position located at University of Hawaii Center, West Hawaii

\$ To be established



^Excluded from position count this chart

*Temporary Position

**Chariperson is appointed from among faculty positions within the department

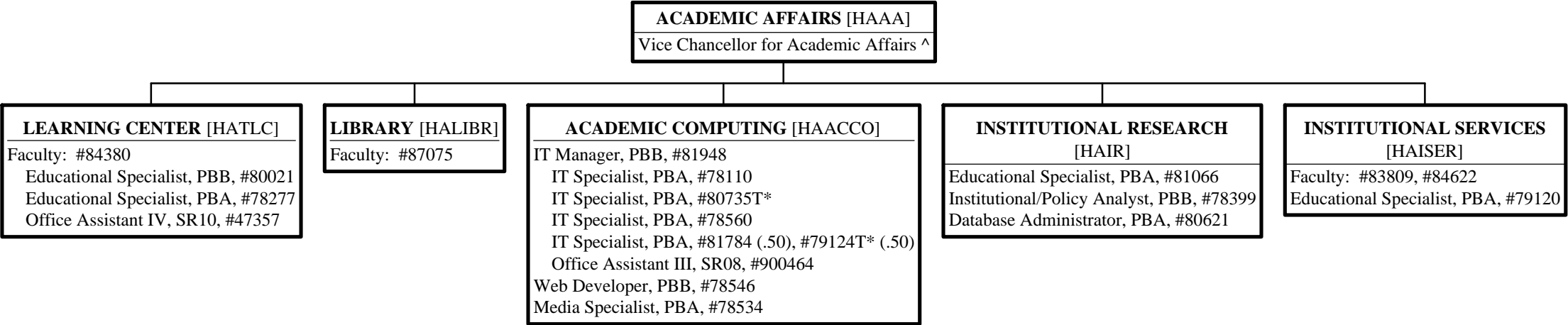
***Clerical staff serve all units in the division but each position has only one immediate supervisor

@Position located at University of Hawaii Center, West Hawaii

\$ To be established

Position Organization Chart

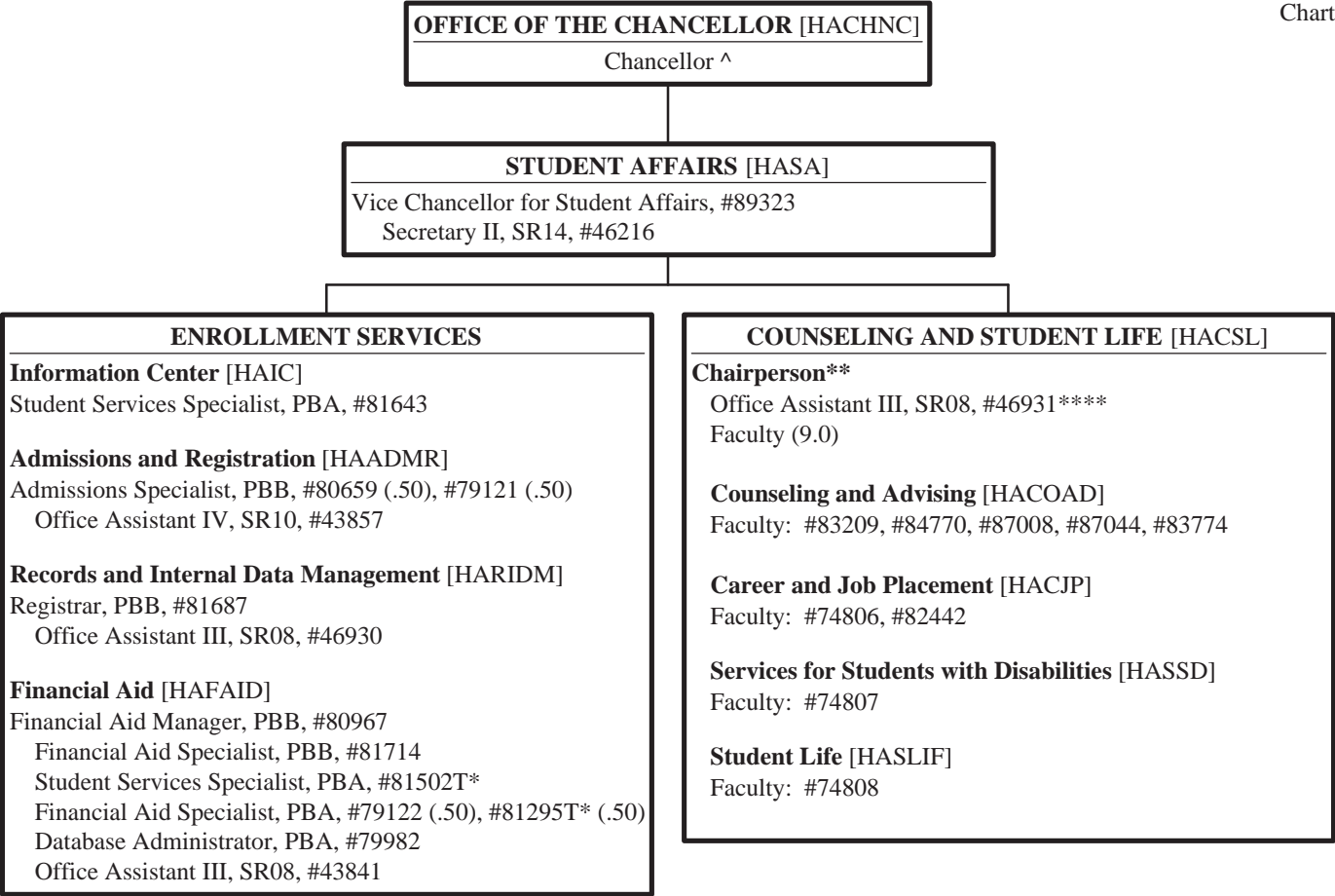
Chart III-B



^ Excluded from position count this chart
* Temporary Position

Position Organization Chart

Chart IV



^ Excluded from position count this chart

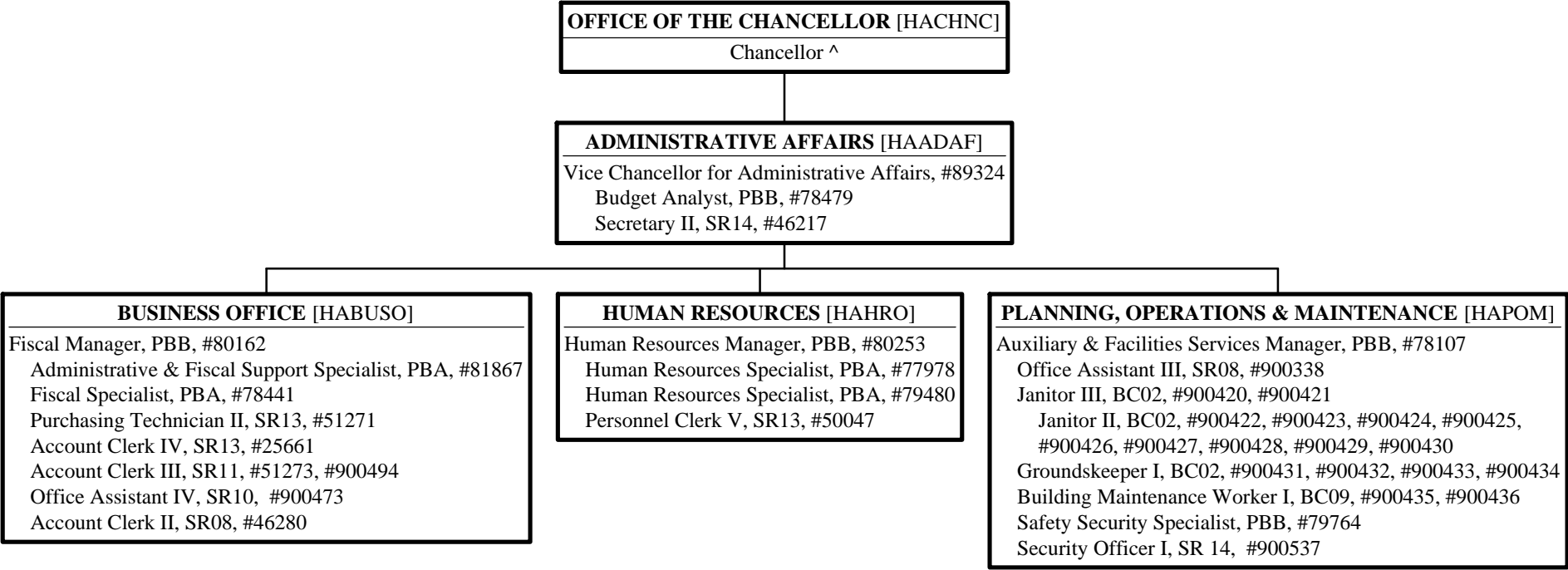
* Temporary Position

**Chairperson is appointed from among faculty positions within the dept

**** Clerk Typist reports to the senior faculty of Counseling & Student Life

Position Organization Chart

Chart V

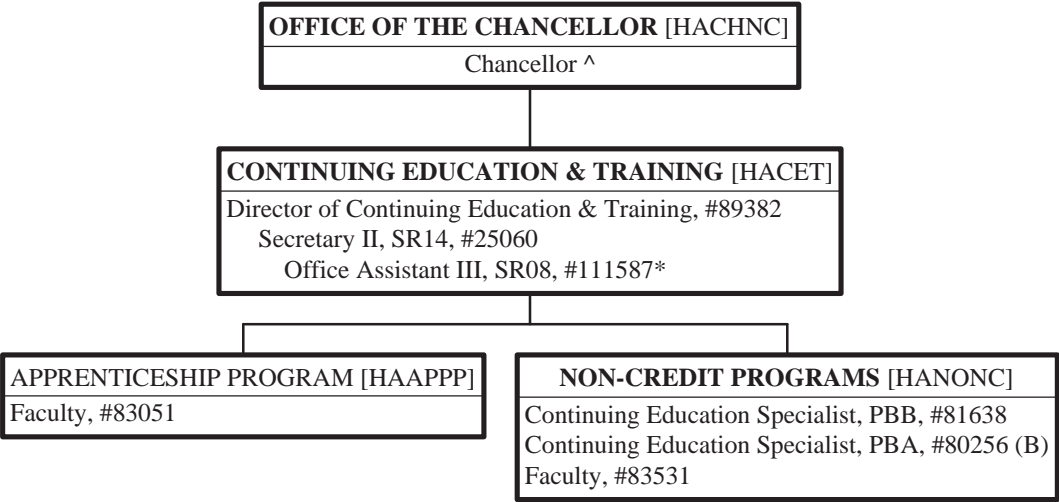


^ Excluded from position count this chart
\$ To be established

STATE OF HAWAII
UNIVERSITY OF HAWAII
HAWAII COMMUNITY COLLEGE
CONTINUING EDUCATION & TRAINING

Position Organization Chart

Chart VI

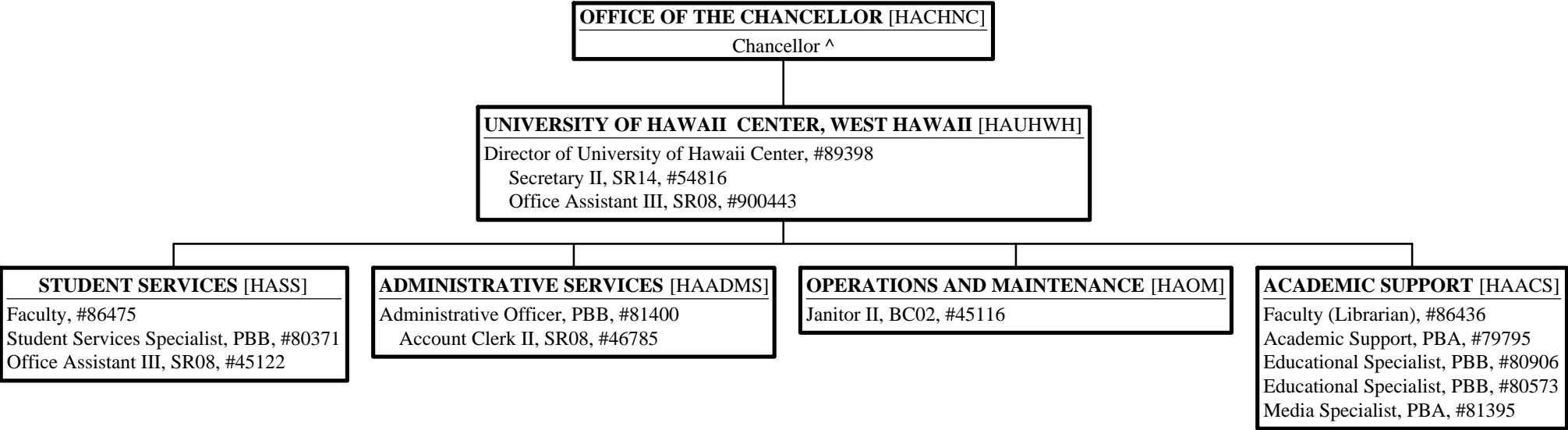


^ Excluded from position count this chart
* Temporary Position

| | <u>Perm</u> | <u>Temp</u> |
|-------------------|-------------|-------------|
| General Fund | 5.00 | 1.00 |
| (B) Special Funds | 1.00 | |

Position Organization Chart

Chart VII



^ Excluded from position count this chart
\$ To be established