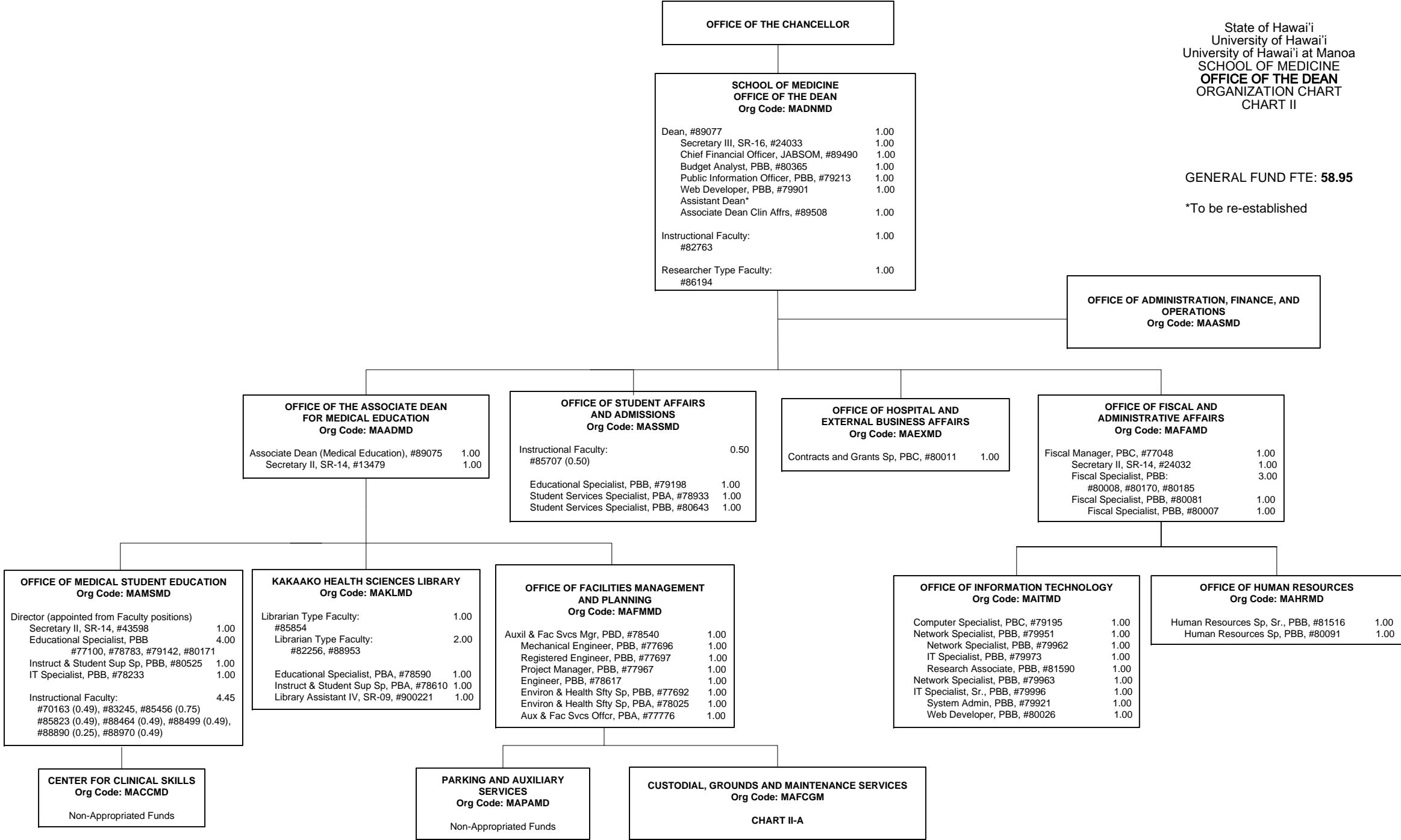


State of Hawai'i
University of Hawai'i
University of Hawai'i at Manoa
SCHOOL OF MEDICINE
ORGANIZATION CHART
CHART I

General Fund FTE: 239.10
General Fund (Authorized Temp FTE): 1.00

GENERAL FUND FTE: 58.95

*To be re-established



State of Hawai'i

University of Hawai'i

University of Hawai'i at Manoa

SCHOOL OF MEDICINE

OFFICE OF THE DEAN

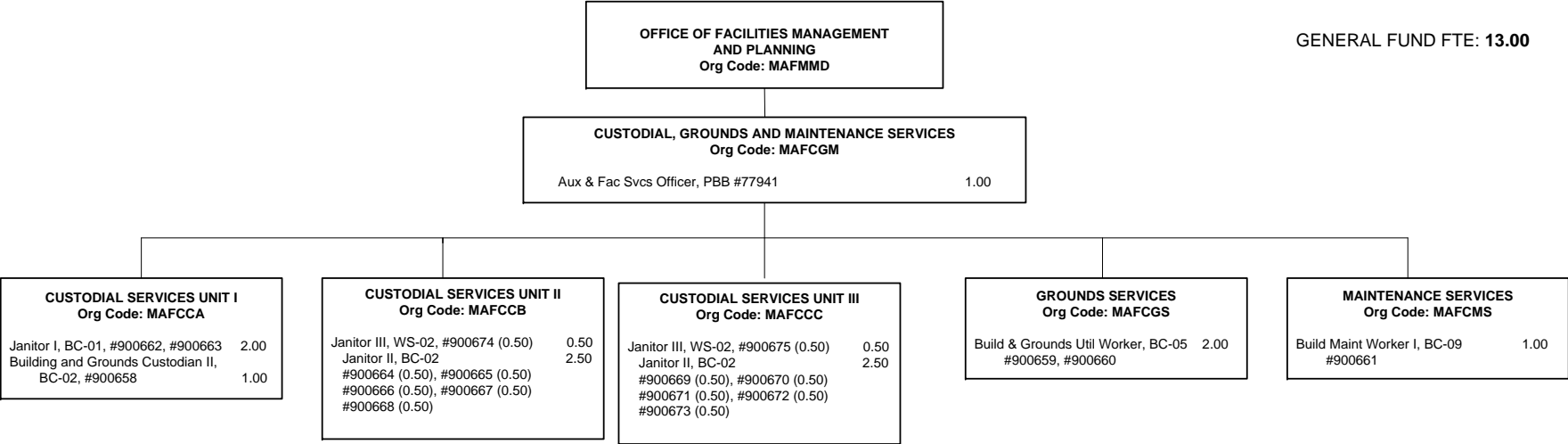
OFFICE OF FACILITIES MANAGEMENT AND PLANNING

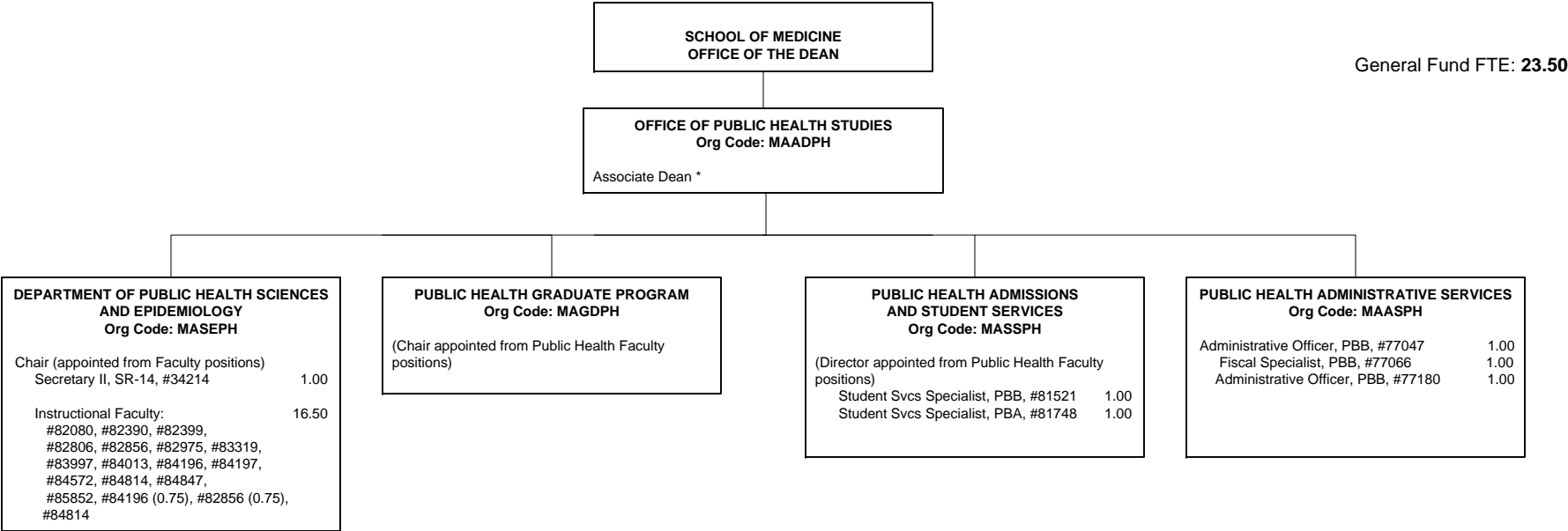
CUSTODIAL, GROUNDS AND MAINTENANCE SERVICES

ORGANIZATION CHART

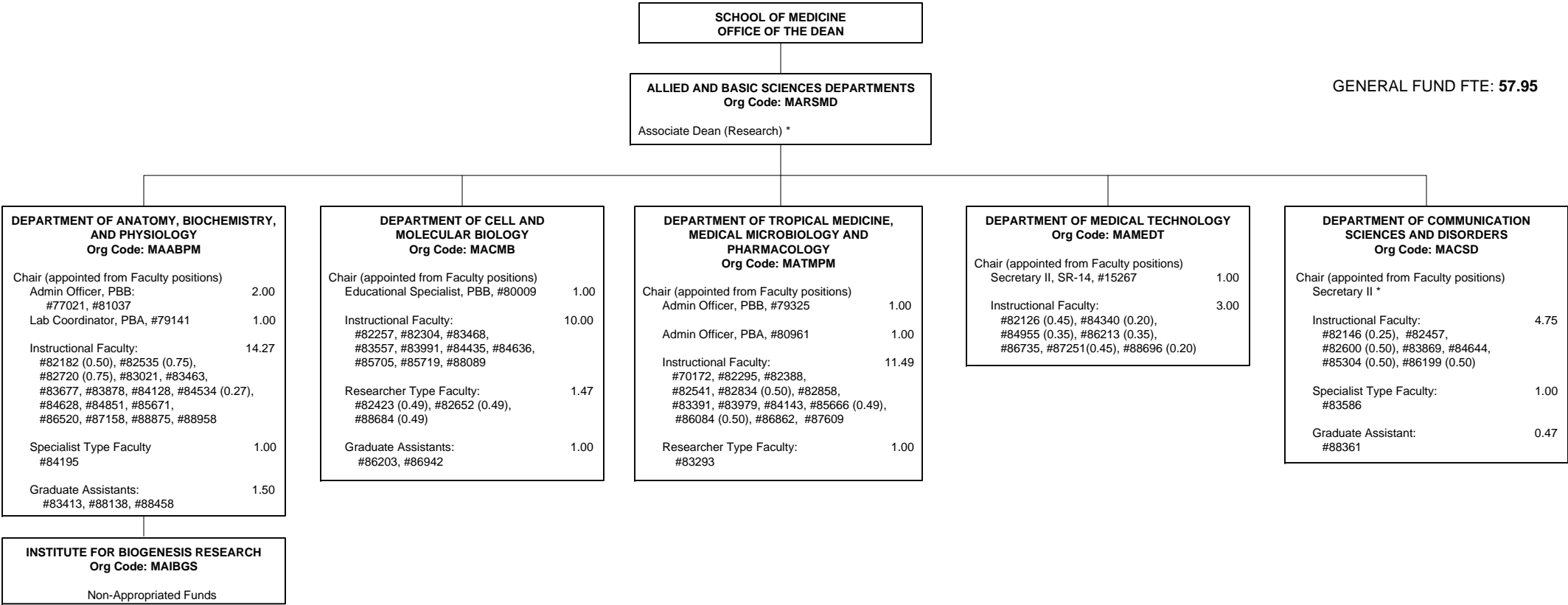
CHART II-A

GENERAL FUND FTE: 13.00





* To be established



* To be established

