

STATE OF HAWAI`I

UNIVERSITY OF HAWAI`I

UNIVERSITY OF HAWAI`I AT MĀNOA

COLLEGE OF TROPICAL AGRICULTURE AND

HUMAN RESOURCES

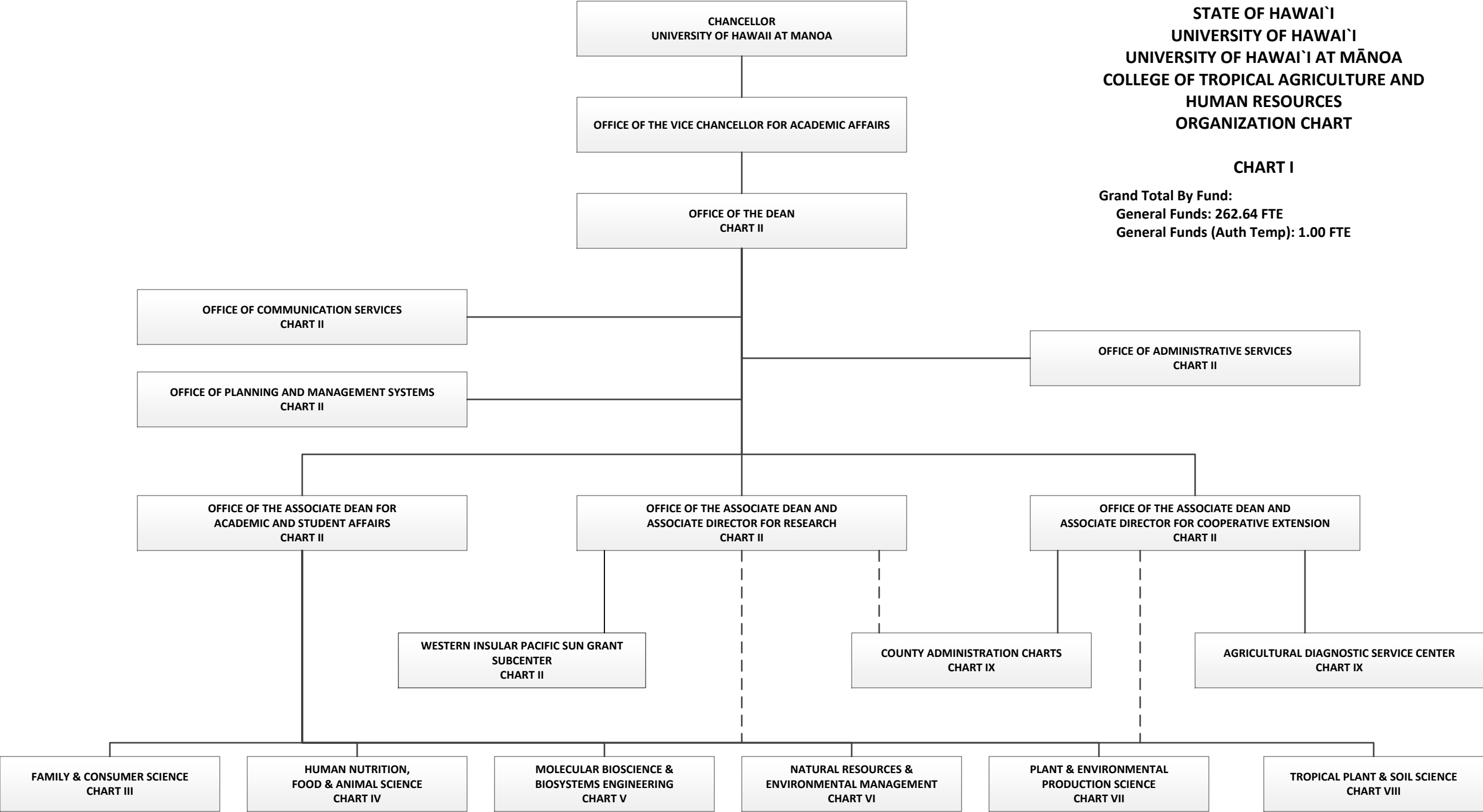
ORGANIZATION CHART

CHART I

Grand Total By Fund:

General Funds: 262.64 FTE

General Funds (Auth Temp): 1.00 FTE



STATE OF HAWAI`I

UNIVERSITY OF HAWAI`I

UNIVERSITY OF HAWAI`I AT MĀNOA

COLLEGE OF TROPICAL AGRICULTURE AND

HUMAN RESOURCES

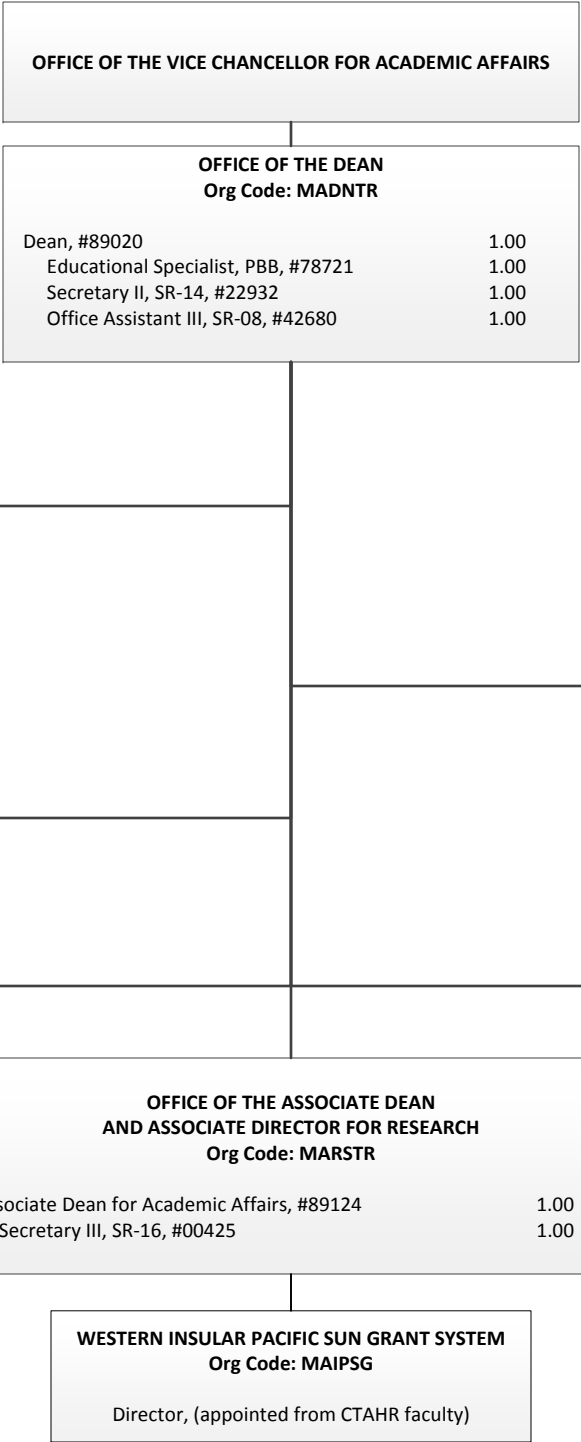
ORGANIZATION CHART

OFFICE OF THE DEAN

CHART II

Chart Total:

General Funds: 43.00 FTE



STATE OF HAWAI`I

UNIVERSITY OF HAWAI`I

UNIVERSITY OF HAWAI`I AT MĀNOA

COLLEGE OF TROPICAL AGRICULTURE AND

HUMAN RESOURCES

ORGANIZATION CHART

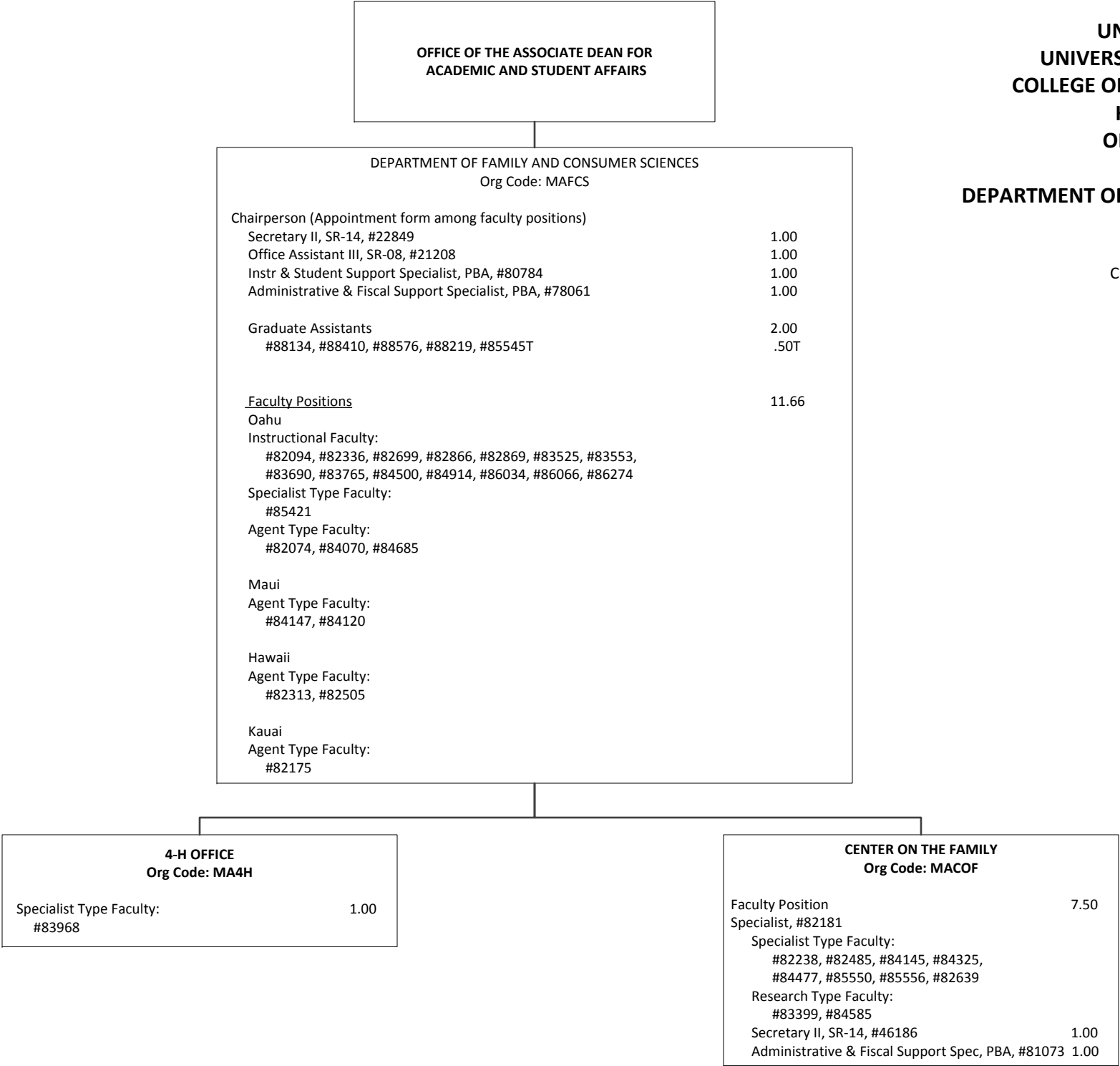
DEPARTMENT OF FAMILY AND CONSUMER SCIENCES

CHART III

Chart Total:

General Funds: 30.16 FTE

General Funds (Auth Temp): 0.50 FTE



Civil Service position abolished #04108,
#4115 (2.00)

STATE OF HAWAI`I

UNIVERSITY OF HAWAI`I

UNIVERSITY OF HAWAI`I AT MĀNOA

COLLEGE OF TROPICAL AGRICULTURE AND

HUMAN RESOURCES

ORGANIZATION CHART

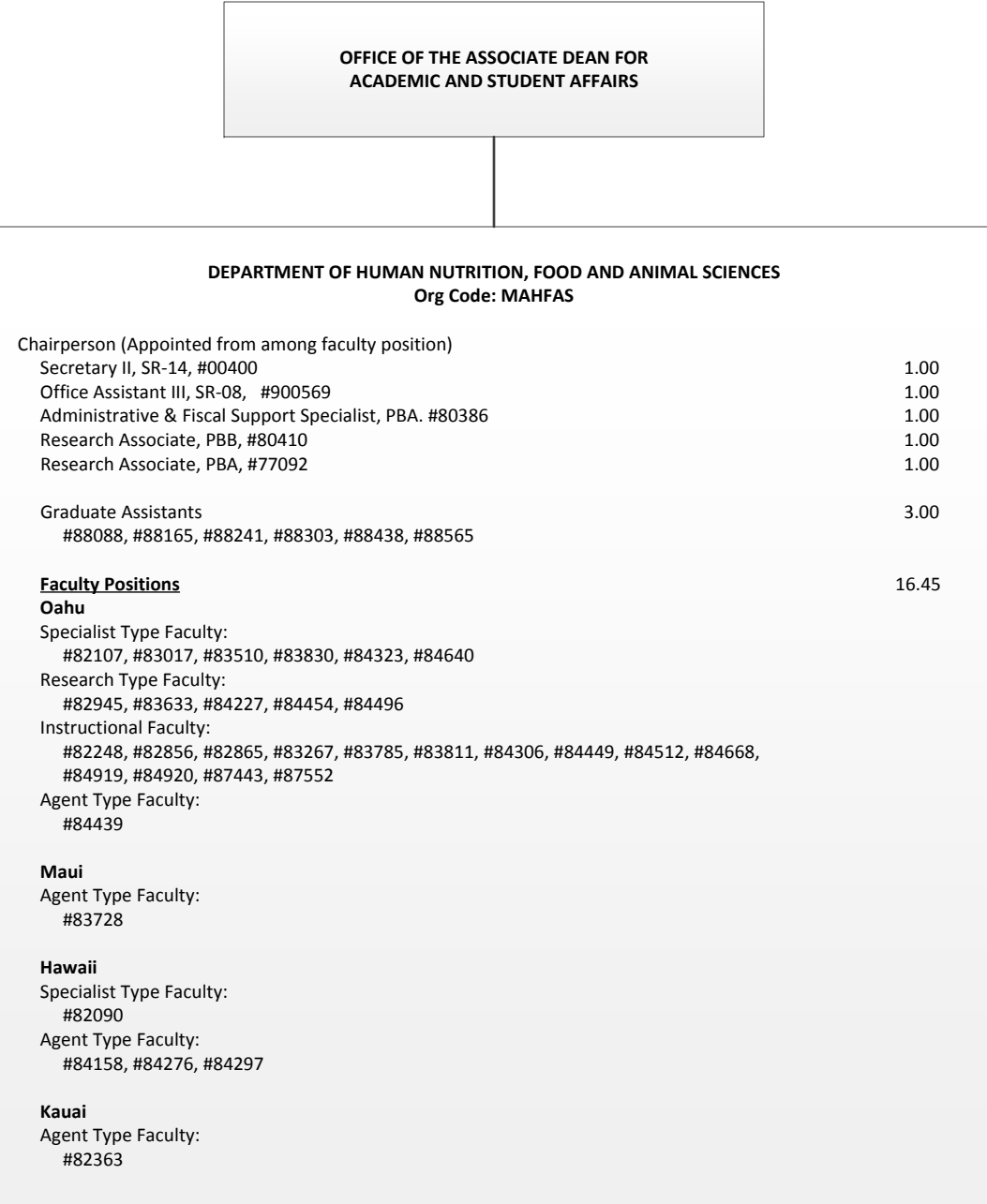
DEPARTMENT OF HUMAN NUTRITION, FOOD AND

ANIMAL SCIENCES

CHART IV

Chart Total:

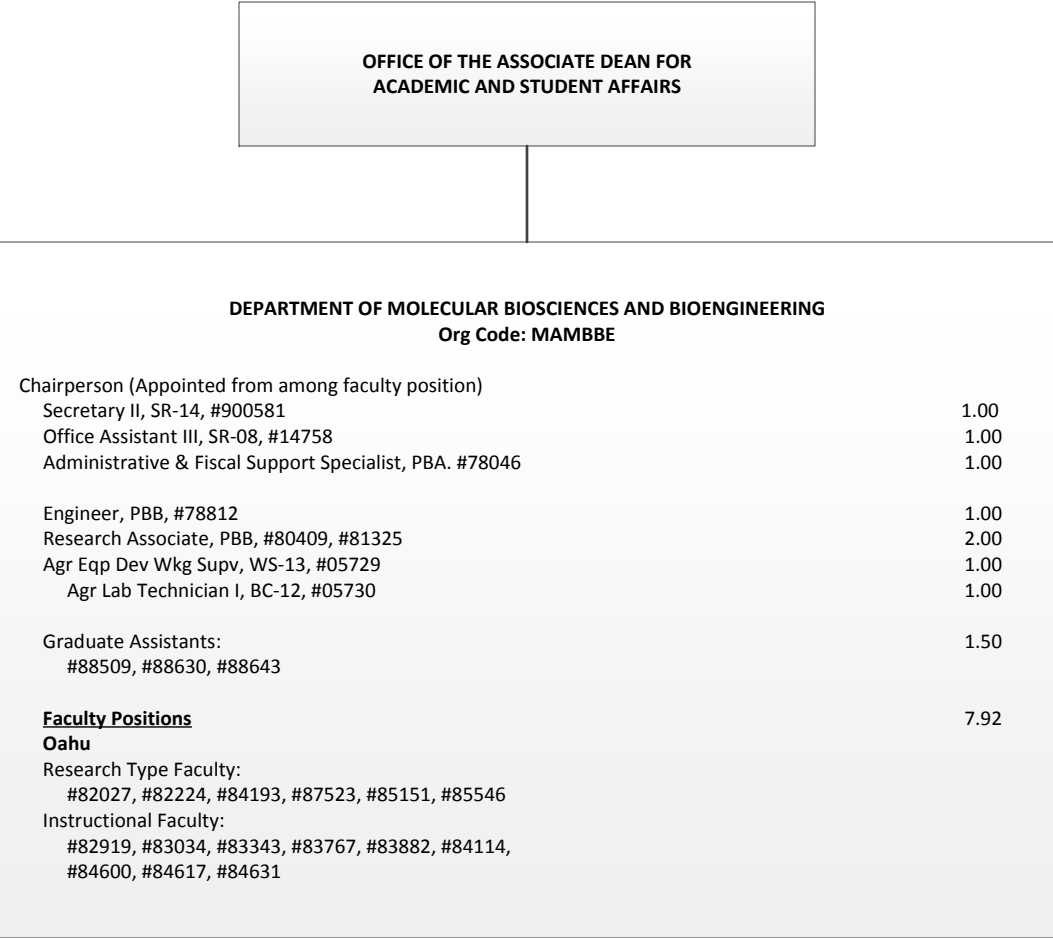
General Funds: 24.45 FTE



STATE OF HAWAI`I
UNIVERSITY OF HAWAI`I
UNIVERSITY OF HAWAI`I AT MĀNOA
COLLEGE OF TROPICAL AGRICULTURE AND
HUMAN RESOURCES
ORGANIZATION CHART

DEPARTMENT OF MOLECULAR BIOSCIENCES AND
BIOENGINEERING
CHART V

Chart Total:
General Funds: 17.42 FTE



STATE OF HAWAI`I

UNIVERSITY OF HAWAI`I

UNIVERSITY OF HAWAI`I AT MĀNOA

COLLEGE OF TROPICAL AGRICULTURE AND

HUMAN RESOURCES

ORGANIZATION CHART

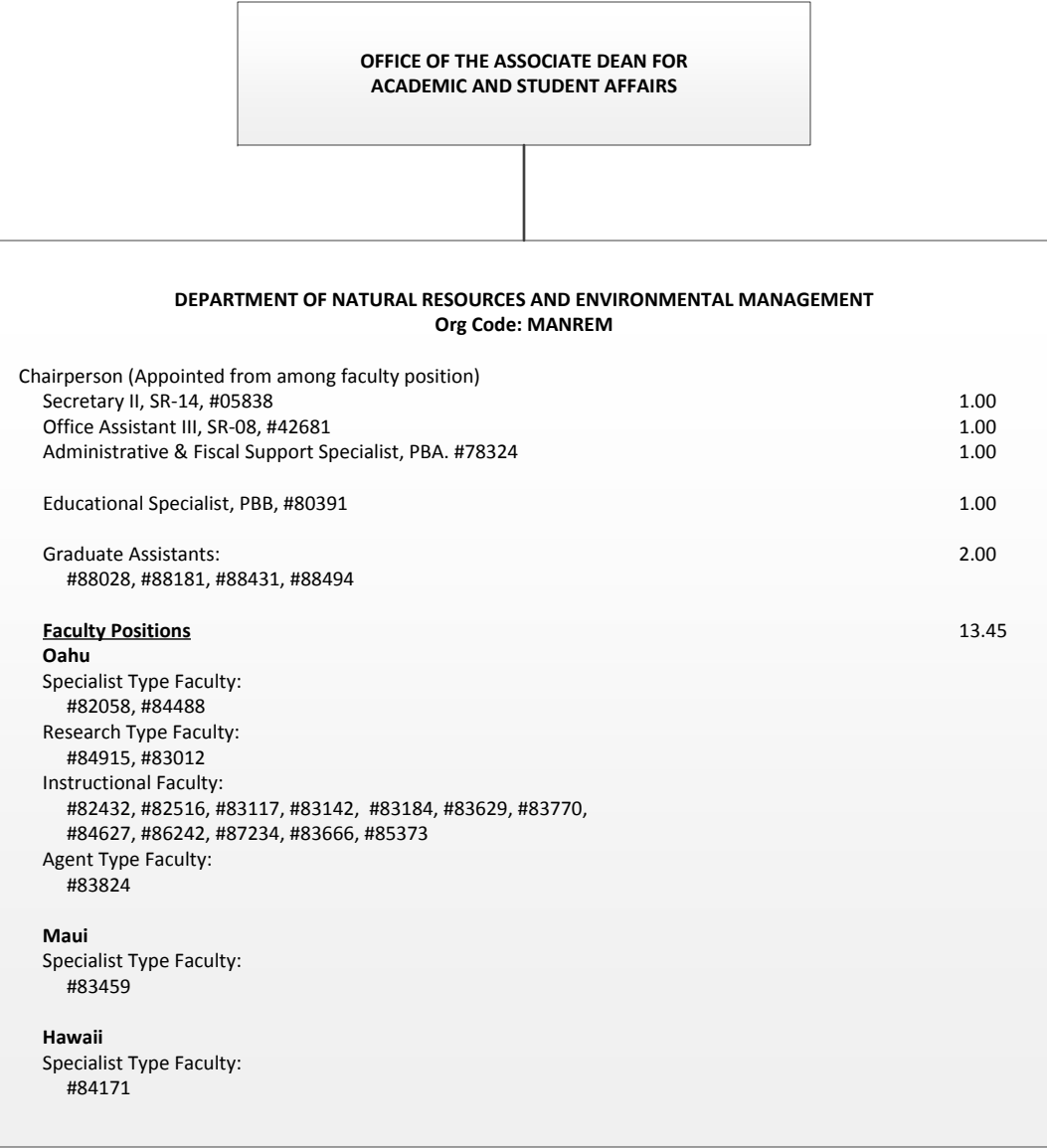
DEPARTMENT OF NATURAL RESOURCES AND

ENVIRONMENTAL MANAGEMENT

CHART VI

Chart Total:

General Funds: 20.45 FTE



OFFICE OF THE ASSOCIATE DEAN FOR

ACADEMIC AND STUDENT AFFAIRS

STATE OF HAWAI`I

UNIVERSITY OF HAWAI`I

UNIVERSITY OF HAWAI`I AT MĀNOA

COLLEGE OF TROPICAL AGRICULTURE AND

HUMAN RESOURCES

ORGANIZATION CHART

DEPARTMENT OF PLANT AND ENVIRONMENTAL

PROTECTION SCIENCES

CHART VII

Chart Total:

General Funds: 23.91 FTE

DEPARTMENT OF PLANT AND ENVIRONMENTAL PROTECTION SCIENCES

Org Code: MAPEPS

Chairperson (Appointed from among faculty position)	
Secretary II, SR-14, #07477	1.00
Office Assistant III, SR-08, #00794, #15509	2.00
Administrative & Fiscal Support Specialist, PBA. #77864	1.00
Educational Specialist, PBB, #80250	1.00
Research Associate, PBB,	4.00
#80385, #80388, #81178, #81311	
Research Associate, PBA, #81313	1.00
Agr Research Technician V, SR-16, #00442	1.00
Agr Research Technician IV, SR-14, #24270	1.00
Agr Research Technician III, SR-11, #24269	1.00
Graduate Assistants:	1.00
#88486, #84932	
Faculty Positions	9.91
Oahu	
Specialist Type Faculty:	
#82550, #82985, #83320, #83513, #84006, #84911, #84321	
Research Type Faculty:	
#82047, #83067, #83884, #84041, #84316, #83742	
Instructional Faculty:	
#82139, #84138, #85510, #85547, #82976	
Agent Type Faculty:	
#84489	
Maui	
Agent Type Faculty:	
#85530	
Hawaii	
Research Type Faculty:	
#83542	
Agent Type Faculty:	
#83462, #85538	
Kauai	
Research Type Faculty:	
#83840	
Instructional Type Faculty:	
#85505	
Agent Type Faculty:	
#83816	

OFFICE OF THE ASSOCIATE DEAN FOR ACADEMIC AND STUDENT AFFAIRS		
DEPARTMENT OF TROPICAL PLANT AND SOIL SCIENCE Org Code: MATPSS		
Chairperson (Appointed from among faculty position)		
Secretary II, SR-14, #00793		1.00
Office Assistant IV, SR-10, #00399		1.00
Administrative & Fiscal Support Specialist, PBA. #77795		1.00
Research Associate, PBB, #80270		1.00
Agr Research Technician V, SR-16, #11019		1.00
Agr Research Technician IV, SR-14, #00397, #05392, #15512		3.00
Graduate Assistants:		1.00
#88171, #88423, #85388T		.50T
Faculty Positions		11.25
Oahu		
Specialist Type Faculty:		
#82598, #83159, #83304, #83388, #83682, #84501, #84916, #85555		
Research Type Faculty:		
#82023, #82240, #82464, #82747, #83260, #83740, #83938, #84420, #84481, #83515, #86275		
Agent Type Faculty:		
#82881		
Maui		
Agent Type Faculty:		
#83848, #84075, #85477, #87584		
Hawaii		
Research Type Faculty:		
#83286, #84354, #84067		
Agent Type Faculty:		
#82758, #82951, #84648		
Kauai		
Agent Type Faculty:		
#82196		

STATE OF HAWAI`I

UNIVERSITY OF HAWAI`I

UNIVERSITY OF HAWAI`I AT MĀNOA

COLLEGE OF TROPICAL AGRICULTURE AND

HUMAN RESOURCES

ORGANIZATION CHART

DEPARTMENT OF TROPICAL PLANT AND SOIL SCIENCE

CHART VIII

Chart Total:

General Funds: 20.25 FTE

General Funds (Auth Temp): 0.50 FTE

STATE OF HAWAIʻI

UNIVERSITY OF HAWAIʻI

UNIVERSITY OF HAWAIʻI AT MĀNOA

COLLEGE OF TROPICAL AGRICULTURE AND

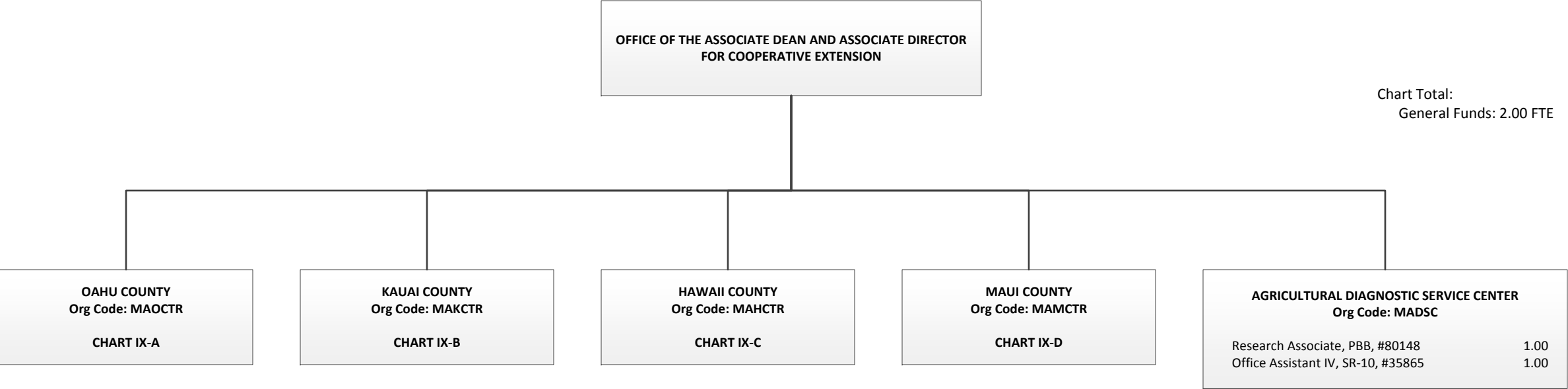
HUMAN RESOURCES

ORGANIZATION CHART

COUNTY ADMINISTRATION

CHART IX

Chart Total:
General Funds: 2.00 FTE



STATE OF HAWAI`I

UNIVERSITY OF HAWAI`I

UNIVERSITY OF HAWAI`I AT MĀNOA

COLLEGE OF TROPICAL AGRICULTURE AND

HUMAN RESOURCES

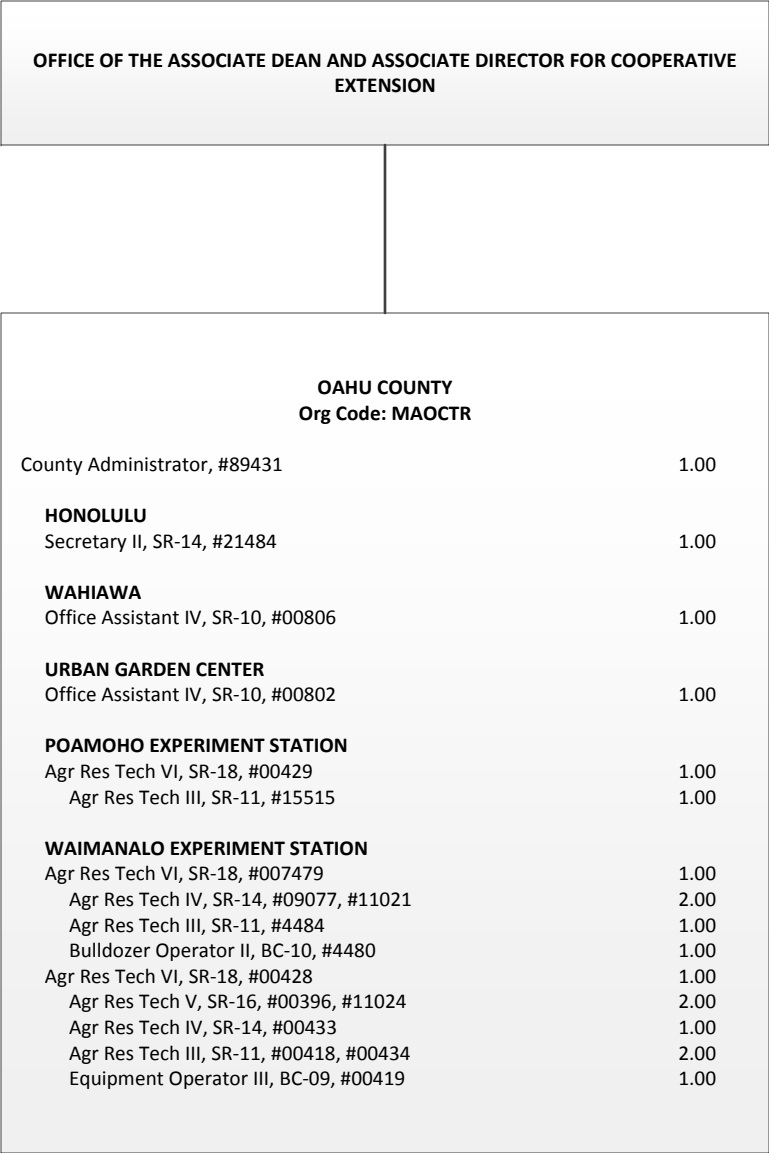
ORGANIZATION CHART

OAHU COUNTY

CHART IX-A

Chart Total:

General Funds: 29.00 FTE



STATE OF HAWAI`I

UNIVERSITY OF HAWAI`I

UNIVERSITY OF HAWAI`I AT MĀNOA

COLLEGE OF TROPICAL AGRICULTURE AND

HUMAN RESOURCES

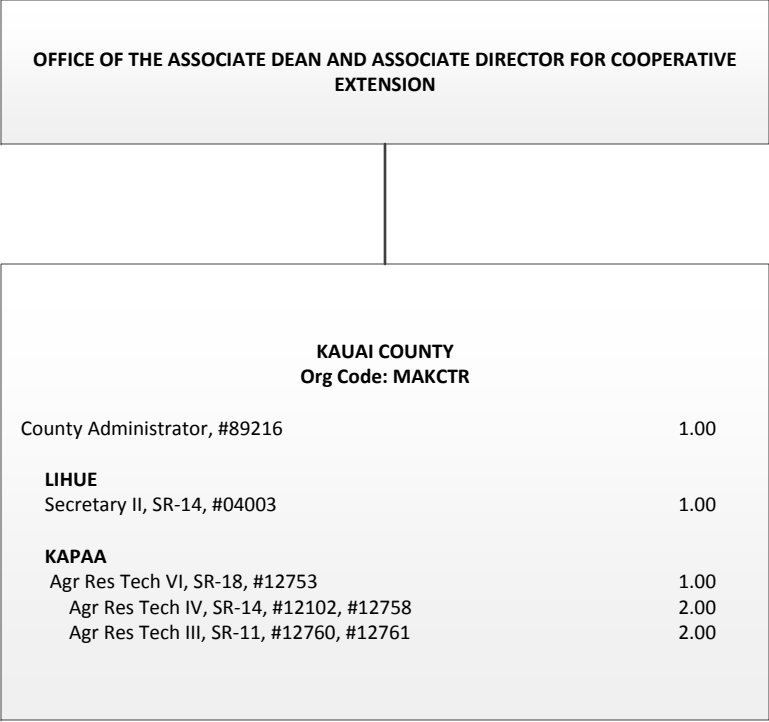
ORGANIZATION CHART

KAUAI COUNTY

CHART IX-B

Chart Total:

General Funds: 7.00 FTE



OFFICE OF THE ASSOCIATE DEAN AND ASSOCIATE DIRECTOR FOR COOPERATIVE EXTENSION		
HAWAII COUNTY Org Code: MAHCTR		
County Administrator, #89213		1.00
KOMOHANA		
Secretary II, SR-14, #13871		1.00
Office Assistant III, SR-08, #00791		1.00
KONA		
Office Assistant IV, SR-10, #900583		1.00
KAMUELA		
Office Assistant IV, SR-10, #00799		1.00
HAWAII COUNTY TECHNICAL SUPPORT Org Code: MAHTTR		
Educational Specialist, PBB, #80311		1.00
EAST HAWAII		
Agr Res Tech VI, SR-18, #12099		1.00
WAIAKEA		
Agr Res Tech V, SR-16, #12094, #14166		2.00
Agr Res Tech IV, SR-14, #12096, #12767, #14168, #12098, #15497		5.00
Agr Res Tech III, SR-11, #17602, #12101		2.00
Building Maintenance Worker I, BC-09, #12095		1.00
VOLCANO		
Agr Res Tech V, SR-16, #13206		1.00
Agr Res Tech IV, SR-14, #12097		1.00
MALAMA-KI		
Agr Res Tech III, SR-11, #12765		1.00
WEST HAWAII		
Agr Res Tech VI, SR-18, #13530		1.00
MEALANI		
Agr Res Tech IV, SR-14, #12100		1.00
Agr Res Tech III, SR-11, #13205, #44868. #44867		3.00
HAMAKUA		
KONA		
Agr Res Tech V, SR-16, #00409		1.00
Agr Res Tech IV, SR-14, #22912		1.00

STATE OF HAWAI`I

UNIVERSITY OF HAWAI`I

UNIVERSITY OF HAWAI`I AT MĀNOA

COLLEGE OF TROPICAL AGRICULTURE AND

HUMAN RESOURCES

ORGANIZATION CHART

HAWAII COUNTY

CHART IX-C

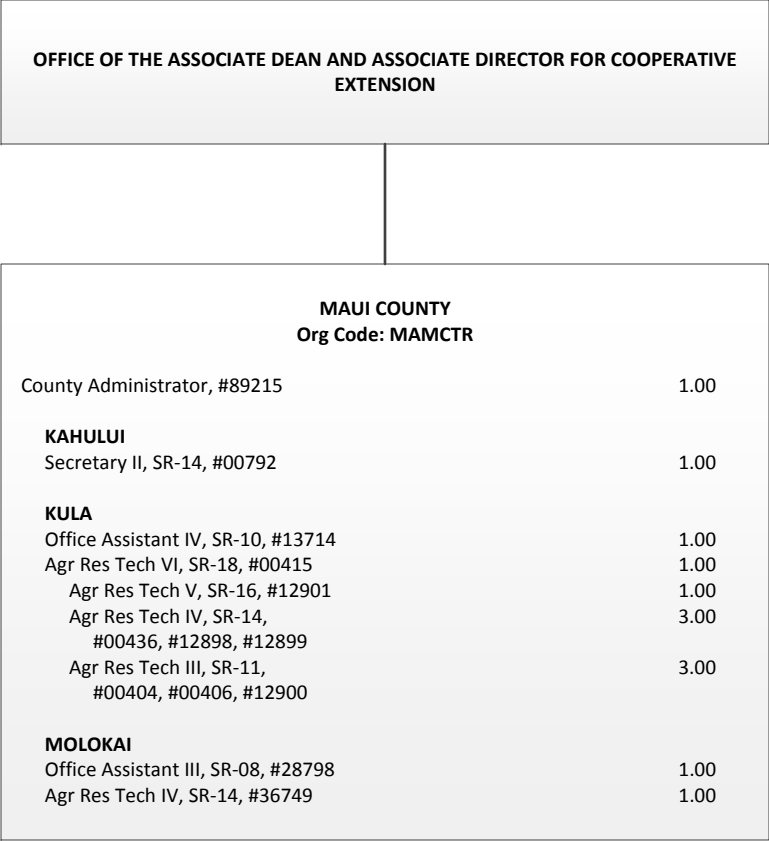
Chart Total:

General Funds: 30.00 FTE

STATE OF HAWAIʻI
UNIVERSITY OF HAWAIʻI
UNIVERSITY OF HAWAIʻI AT MĀNOA
COLLEGE OF TROPICAL AGRICULTURE AND
HUMAN RESOURCES
ORGANIZATION CHART

MAUI COUNTY
CHART IX-D

Chart Total:
General Funds: 15.00 FTE



Civil Service position deleted #12902, #42422 (2.00)