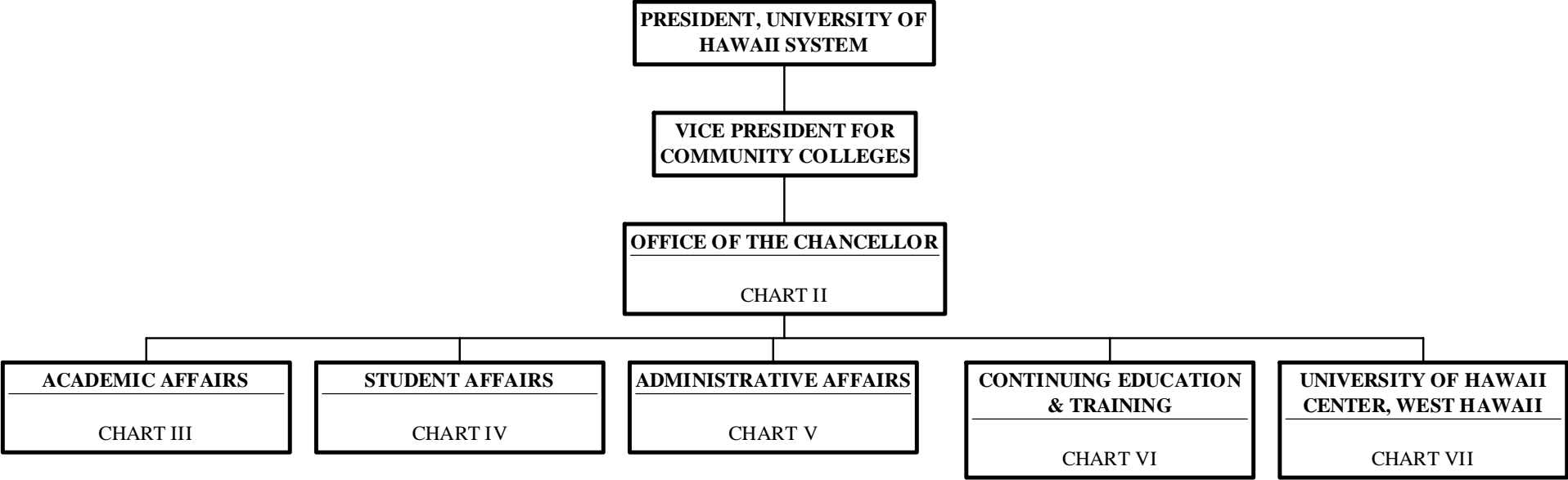


Organization Chart

Chart I

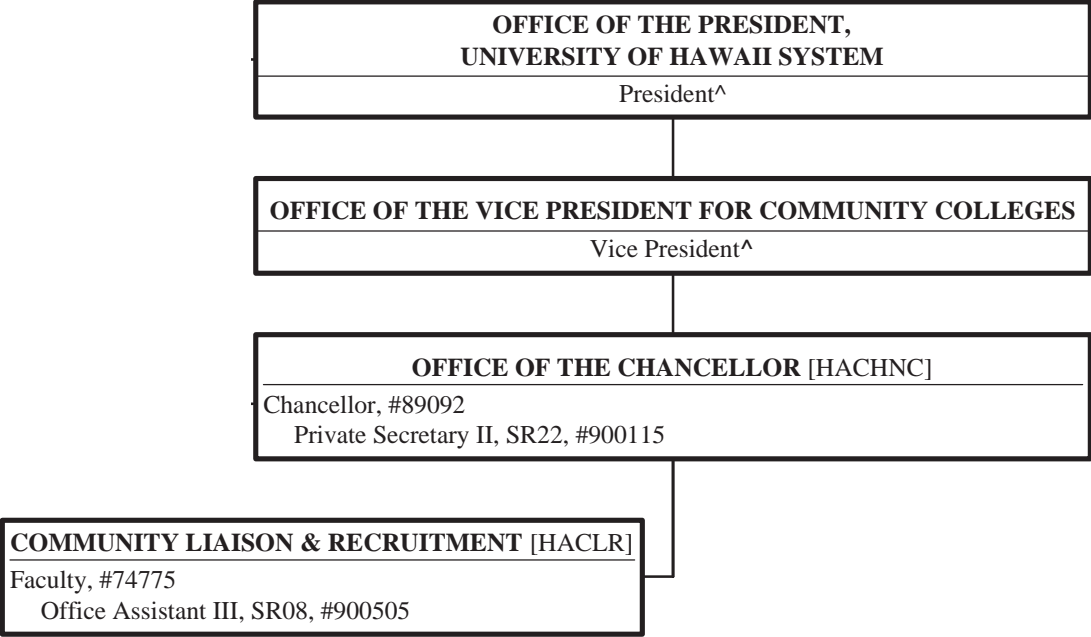


| | <u>Perm</u> | <u>Temp</u> |
|-------------------|-------------|-------------|
| General Fund | 227.00 | 5.00 |
| (B) Special Funds | 1.00 | |

STATE OF HAWAII
UNIVERSITY OF HAWAII
HAWAII COMMUNITY COLLEGE
OFFICE OF THE CHANCELLOR

Position Organization Chart

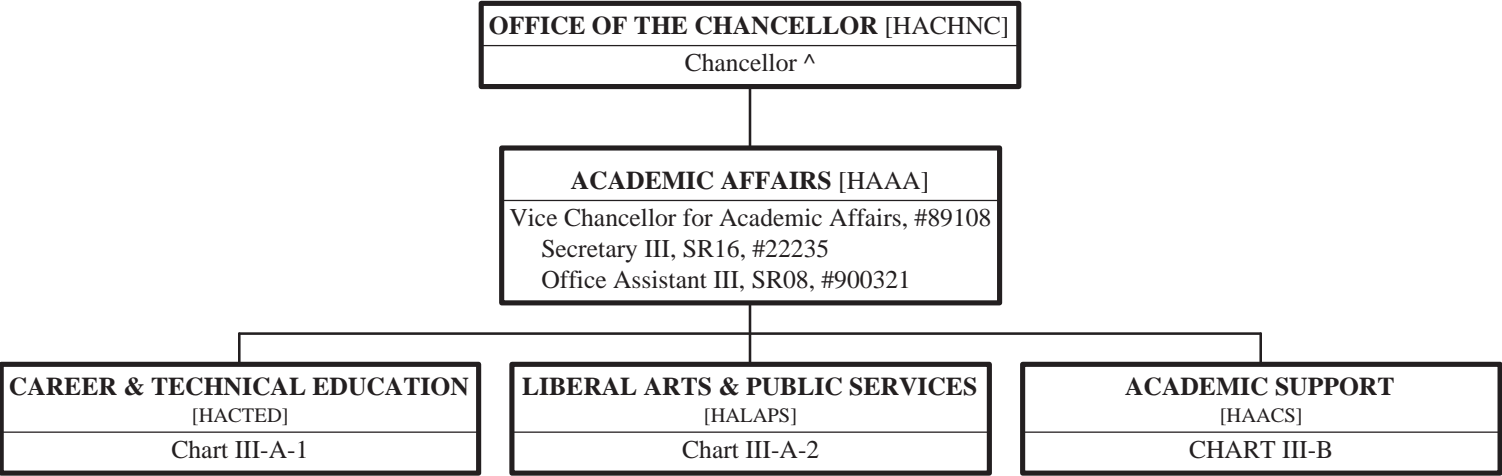
Chart II



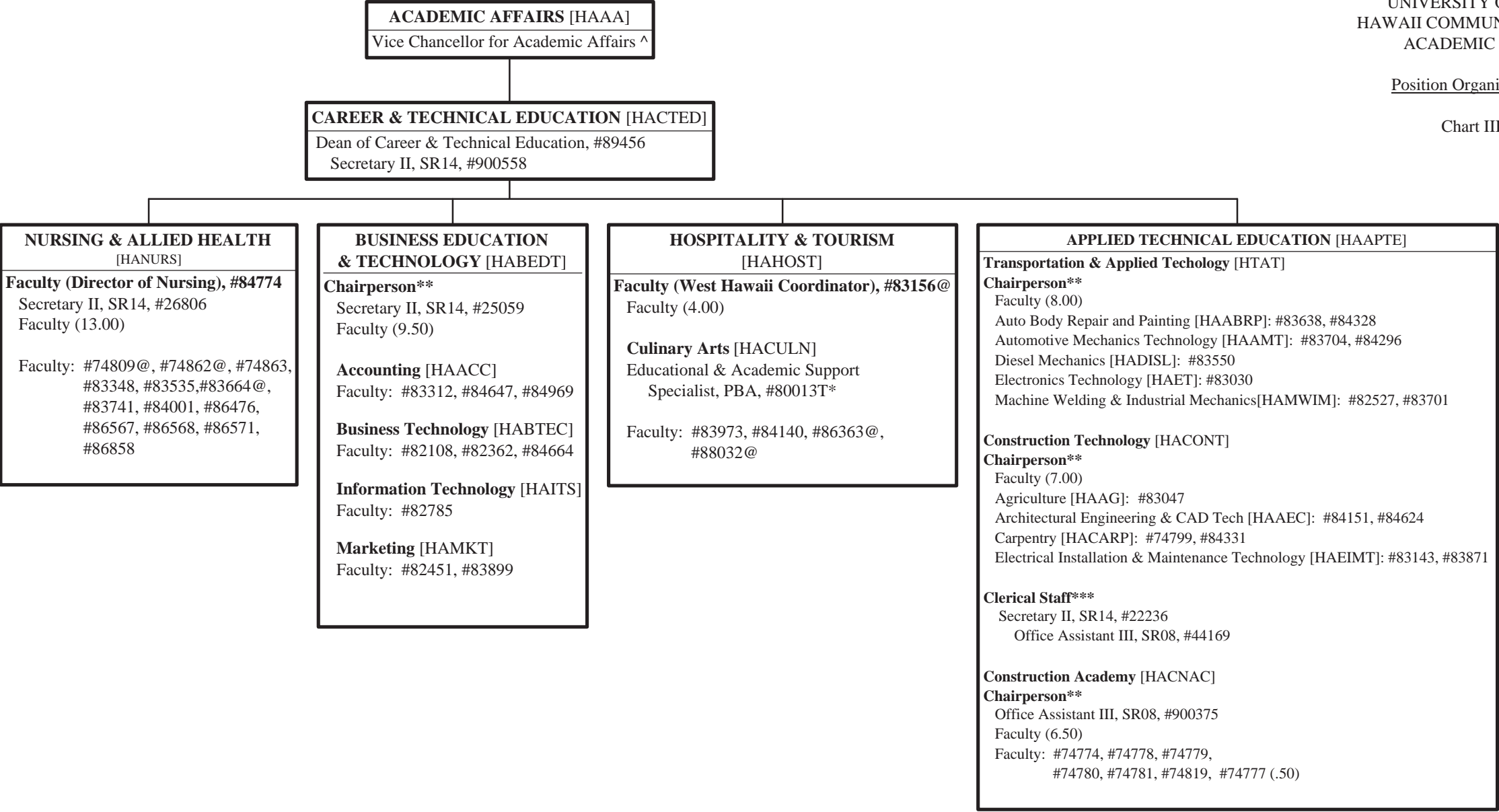
^ Excluded from position count this chart
\$ To be established

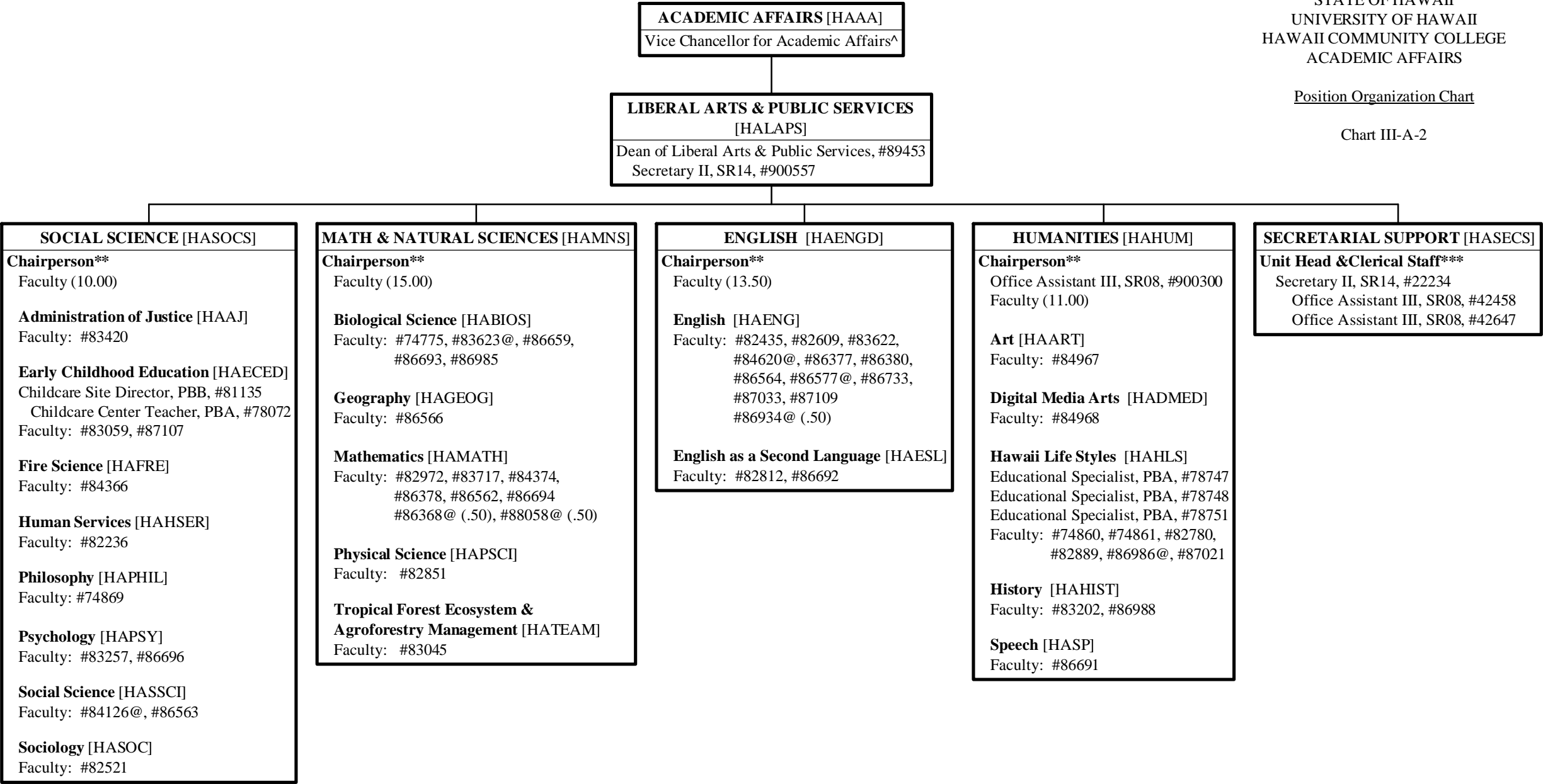
Position Organization Chart

Chart III



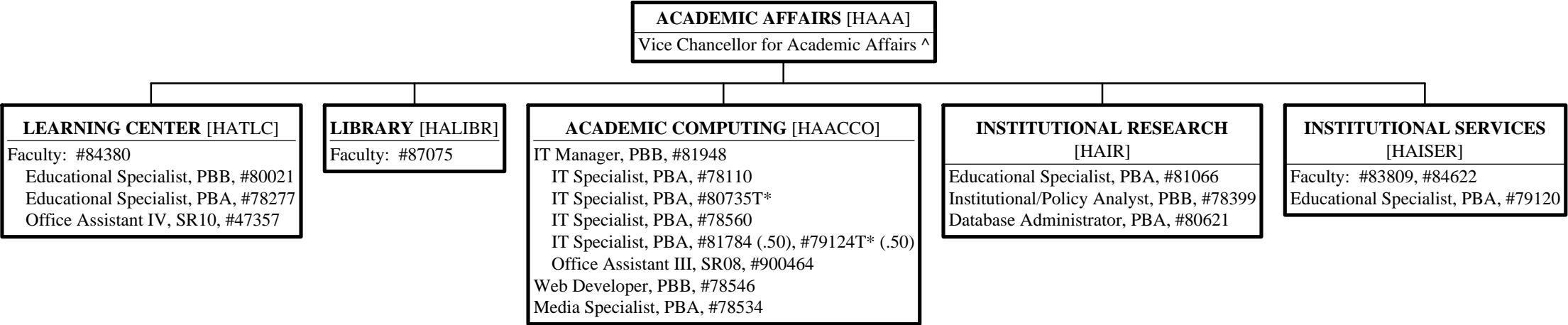
^ Excluded from position count this chart





Position Organization Chart

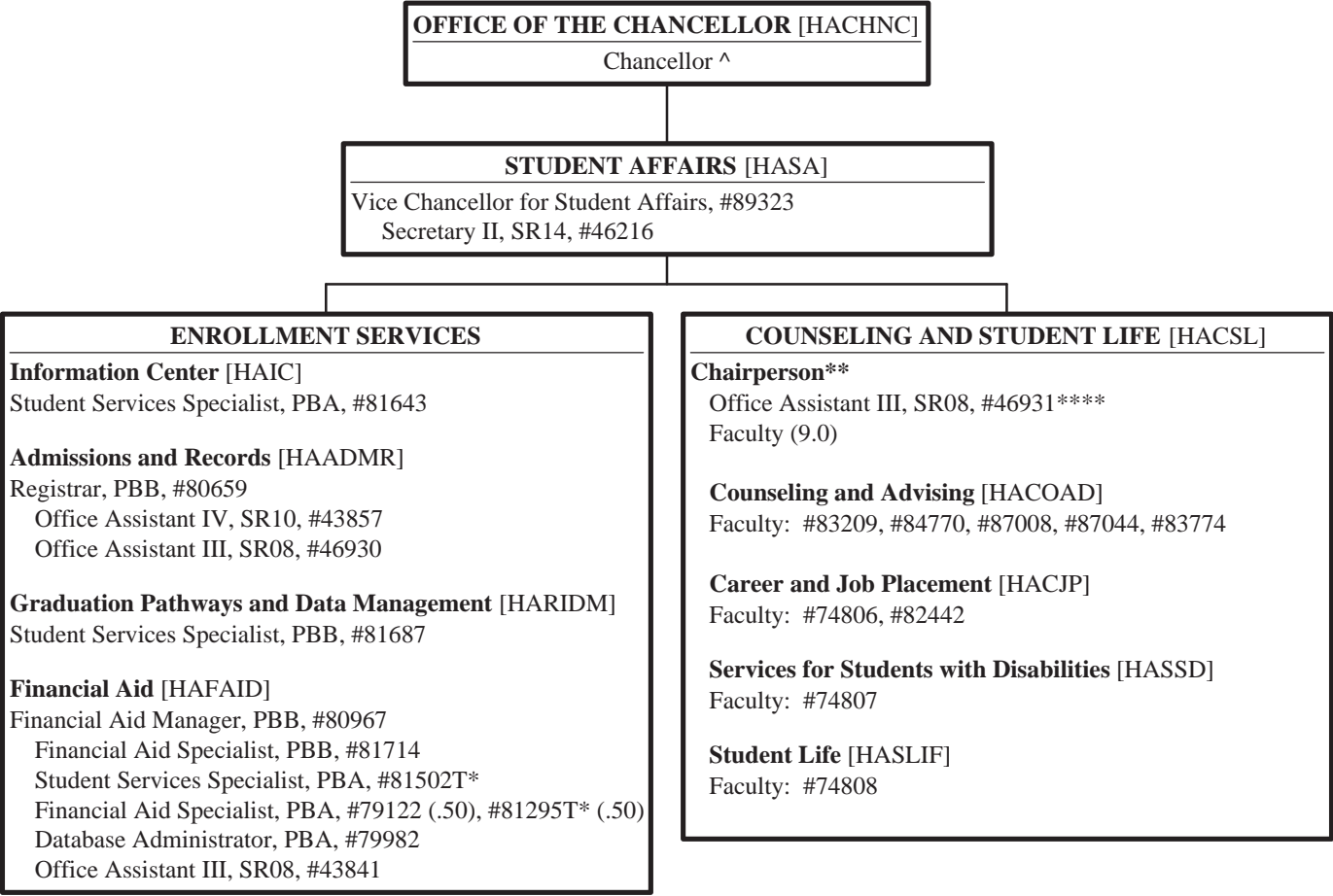
Chart III-B



^ Excluded from position count this chart
* Temporary Position

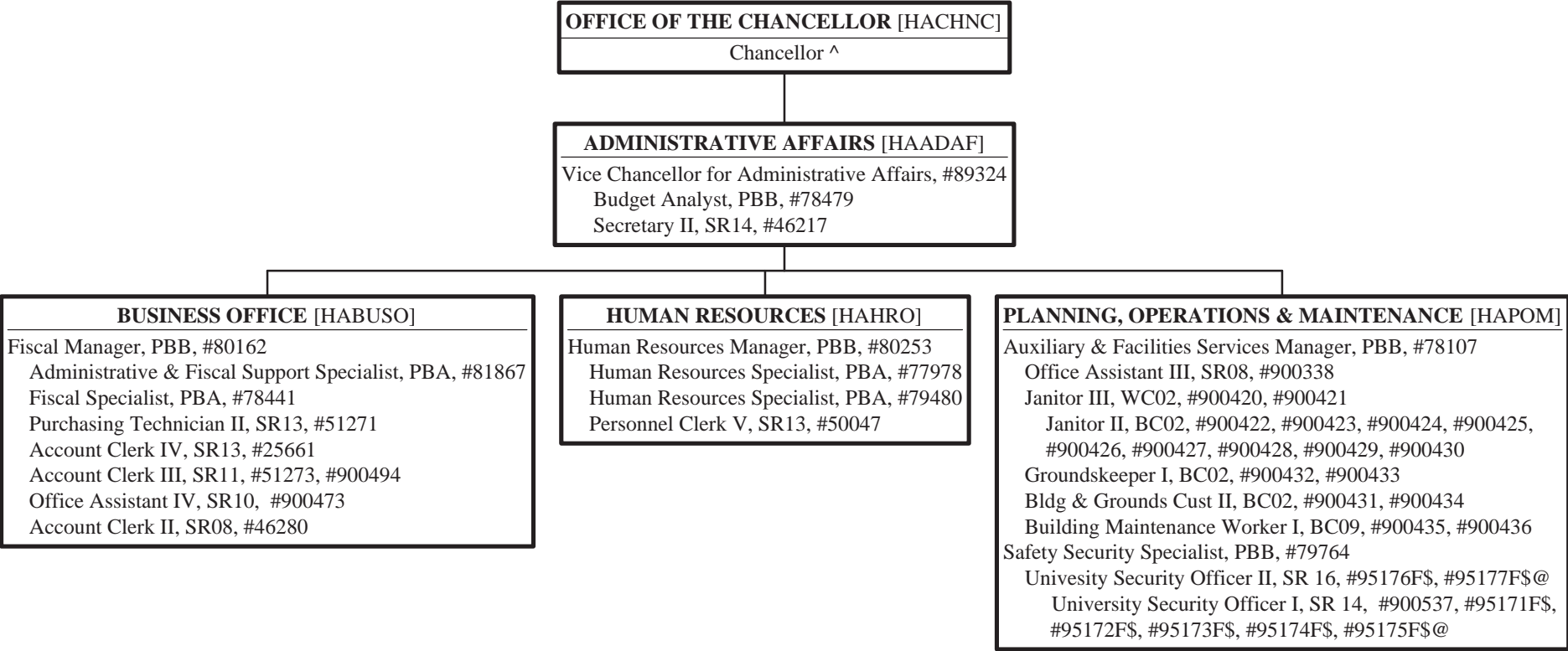
Position Organization Chart

Chart IV



Position Organization Chart

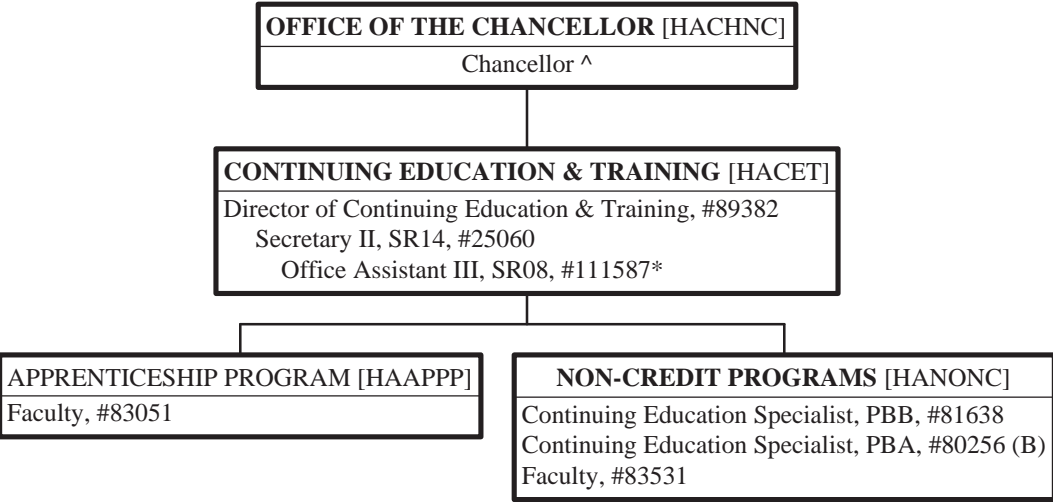
Chart V



^ Excluded from position count this chart
\$ To be established

Position Organization Chart

Chart VI

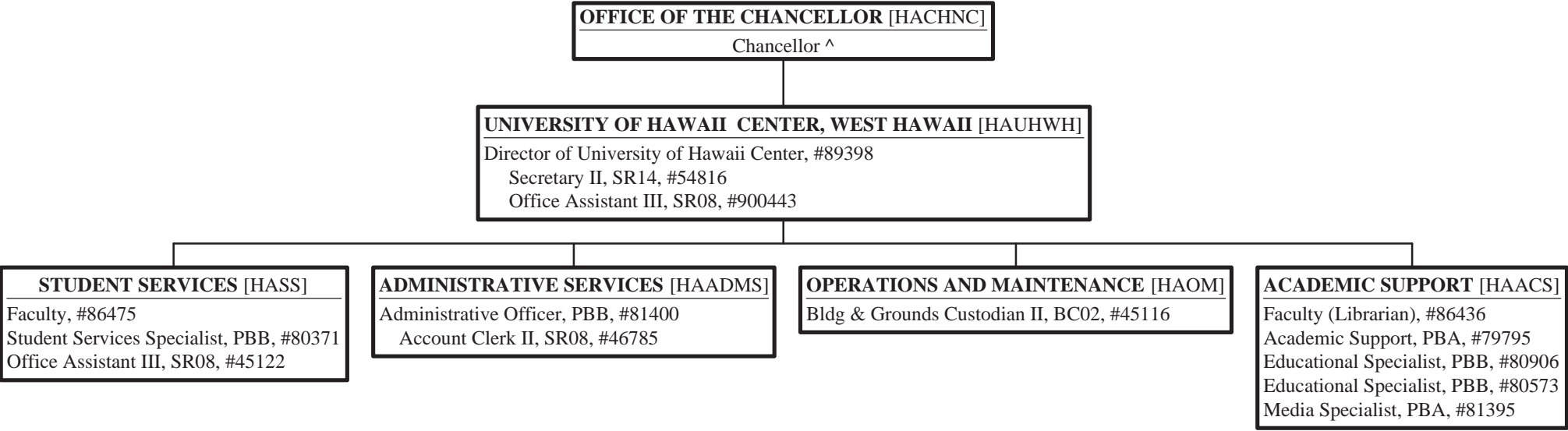


^ Excluded from position count this chart
* Temporary Position

| | <u>Perm</u> | <u>Temp</u> |
|-------------------|-------------|-------------|
| General Fund | 5.00 | 1.00 |
| (B) Special Funds | 1.00 | |

Position Organization Chart

Chart VII



^ Excluded from position count this chart
\$ To be established