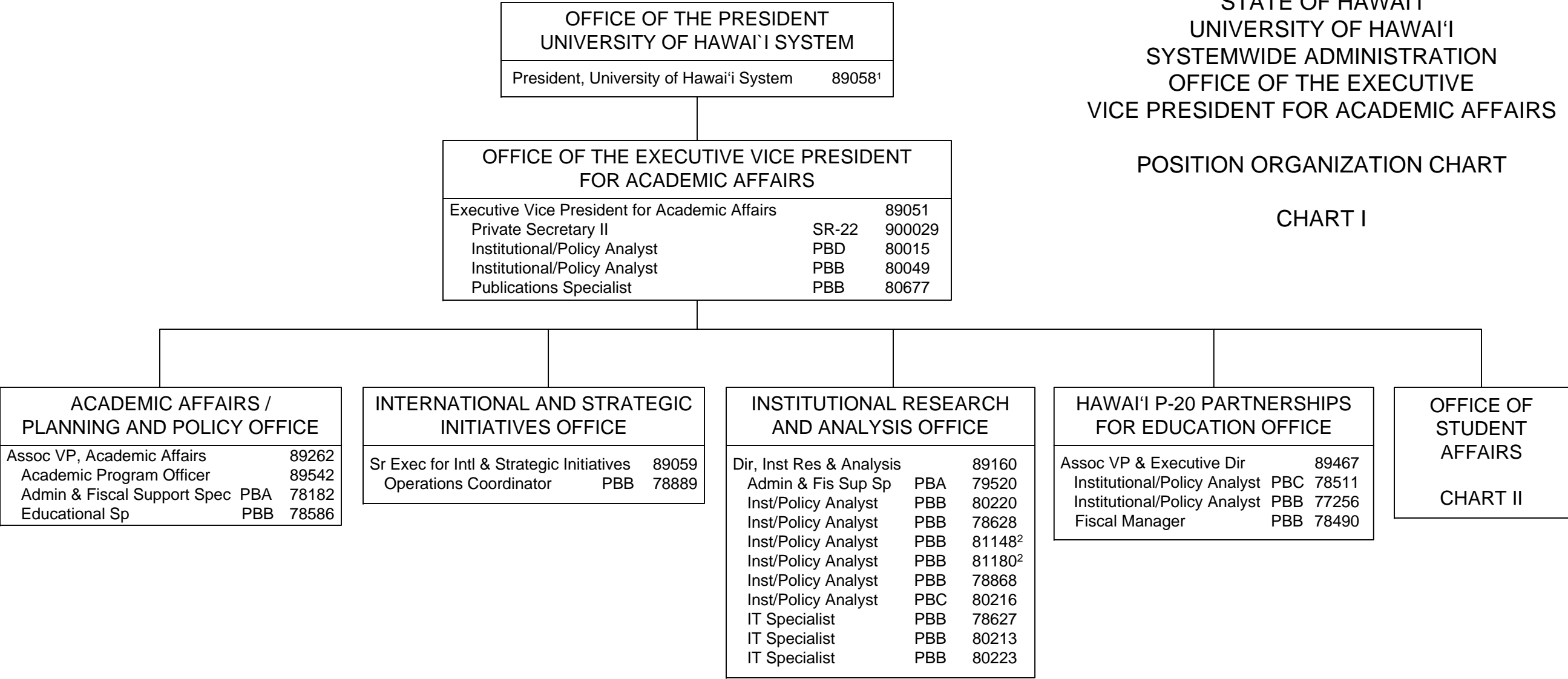


STATE OF HAWAI'I
UNIVERSITY OF HAWAI'I
SYSTEMWIDE ADMINISTRATION
OFFICE OF THE EXECUTIVE
VICE PRESIDENT FOR ACADEMIC AFFAIRS

POSITION ORGANIZATION CHART

CHART I



¹ Excluded from position count

² Part of UOH 902 appropriation reflected organizationally on this chart

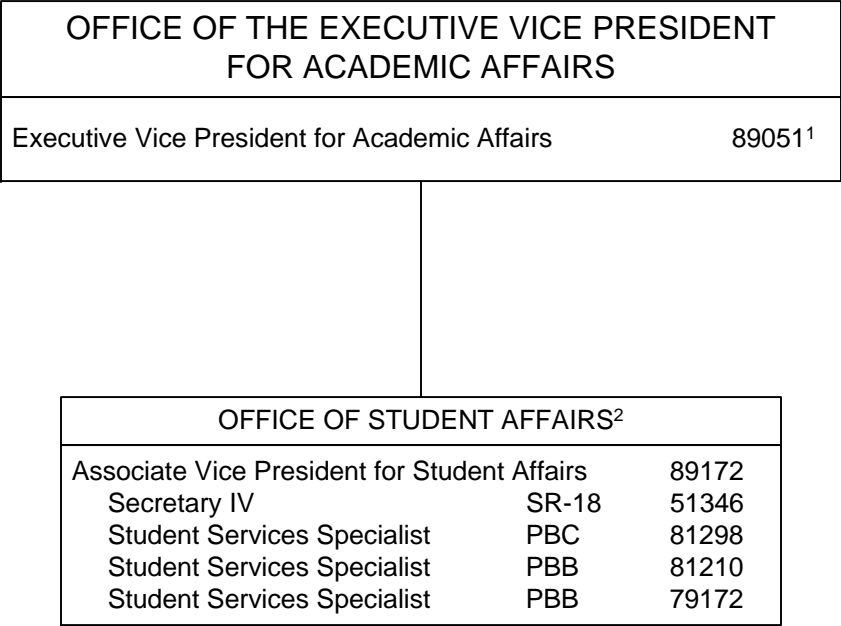
³ Positions appropriated but not established (MOF B): 99969F, 99970F

	<u>Perm</u>
General Funds (UOH903)	24.00
General Funds (UOH 902)	2.00
Special Funds (B) (UOH 903)	2.00 ³

STATE OF HAWAI‘I
UNIVERSITY OF HAWAI‘I
SYSTEMWIDE ADMINISTRATION
OFFICE OF THE EXECUTIVE
VICE PRESIDENT FOR ACADEMIC AFFAIRS
OFFICE OF STUDENT AFFAIRS

POSITION ORGANIZATION CHART

CHART II



¹ Excluded from position count

² Serves as administrative liaison for the Hawaii Commission for National and Community Service and the National Corporation for Community Service