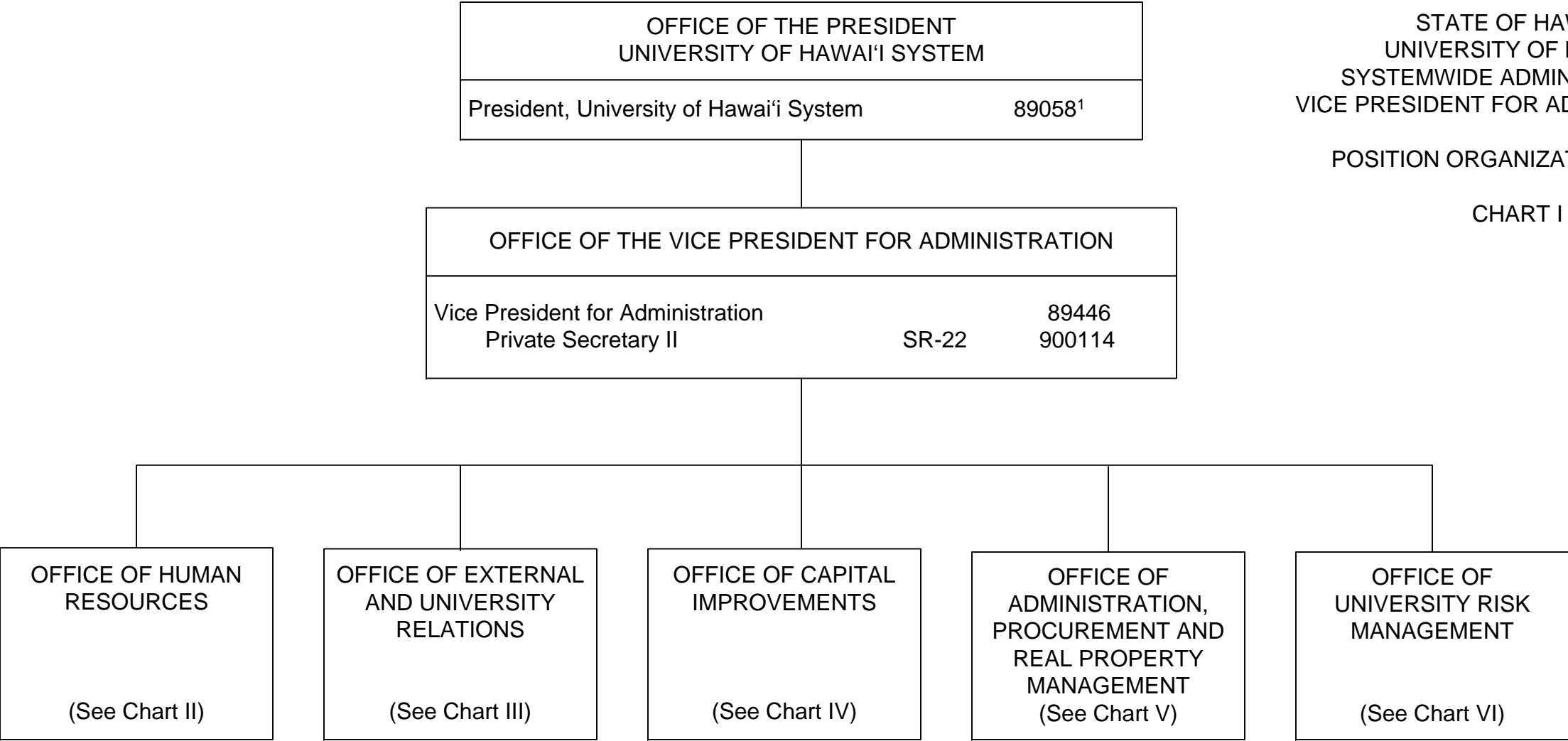


STATE OF HAWAI'I  
UNIVERSITY OF HAWAI'I  
SYSTEMWIDE ADMINISTRATION  
VICE PRESIDENT FOR ADMINISTRATION

POSITION ORGANIZATION CHART

CHART I

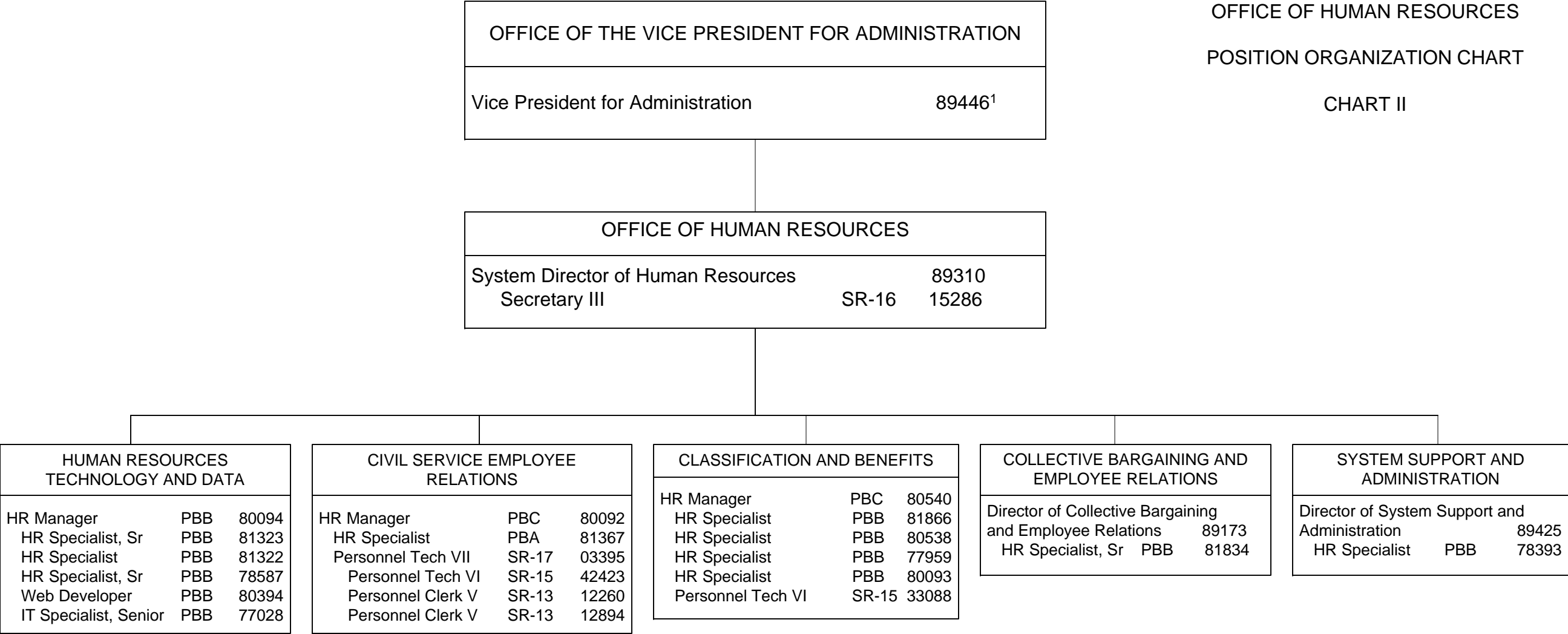


1 Excluded from positon count

STATE OF HAWAI'I  
UNIVERSITY OF HAWAI'I  
SYSTEMWIDE ADMINISTRATION  
VICE PRESIDENT FOR ADMINISTRATION  
OFFICE OF HUMAN RESOURCES

POSITION ORGANIZATION CHART

CHART II

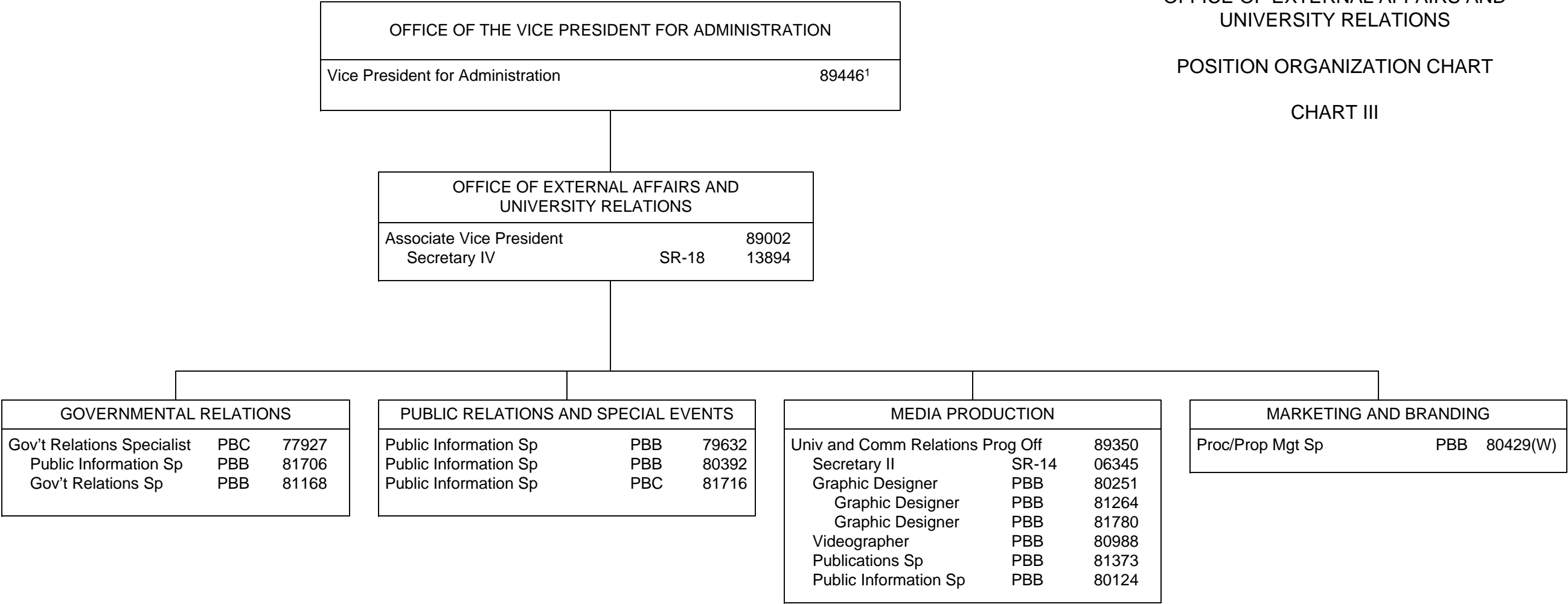


<sup>1</sup> Excluded from position count

STATE OF HAWAI'I  
UNIVERSITY OF HAWAI'I  
SYSTEMWIDE ADMINISTRATION  
VICE PRESIDENT FOR ADMINISTRATION  
OFFICE OF EXTERNAL AFFAIRS AND  
UNIVERSITY RELATIONS

POSITION ORGANIZATION CHART

CHART III

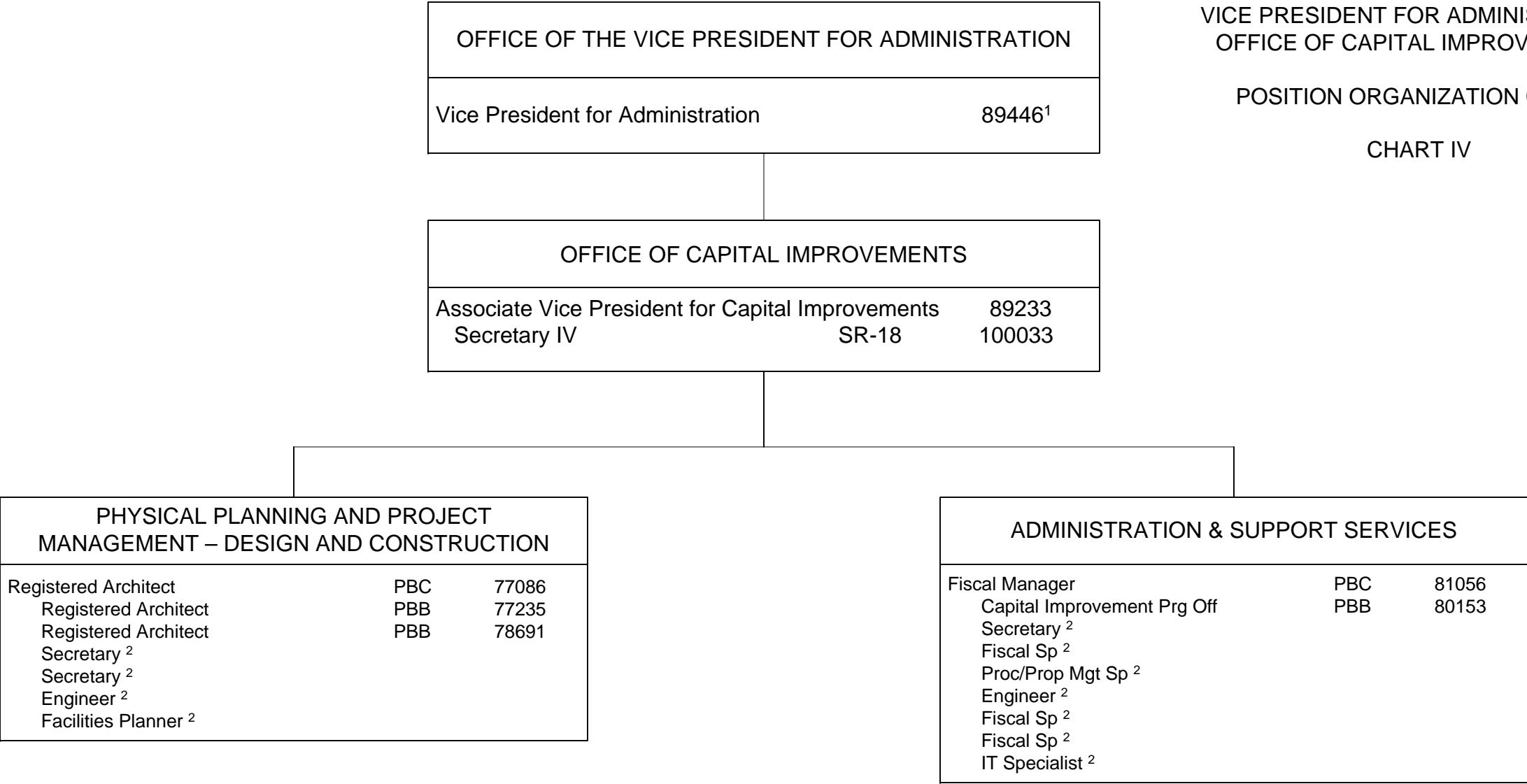


<sup>1</sup> Excluded from position count

STATE OF HAWAI'I  
UNIVERSITY OF HAWAI'I  
SYSTEMWIDE ADMINISTRATION  
VICE PRESIDENT FOR ADMINISTRATION  
OFFICE OF CAPITAL IMPROVEMENTS

POSITION ORGANIZATION CHART

CHART IV



<sup>1</sup> Excluded from position count

<sup>2</sup> To be created via reassigned position within the University and/or to be requested

<sup>3</sup> Appropriated but not established, 11 Special Fund (B) positions: 93925F – 93935F

|              |                    |                              |
|--------------|--------------------|------------------------------|
|              | <u>Perm</u>        |                              |
| General Fund | 7.00               |                              |
| General Fund | 11.00 <sup>2</sup> | (to be reassigned/requested) |
| Special Fund | 11.00 <sup>3</sup> |                              |

STATE OF HAWAI'I

UNIVERSITY OF HAWAI'I

SYSTEMWIDE ADMINISTRATION

VICE PRESIDENT FOR ADMINISTRATION

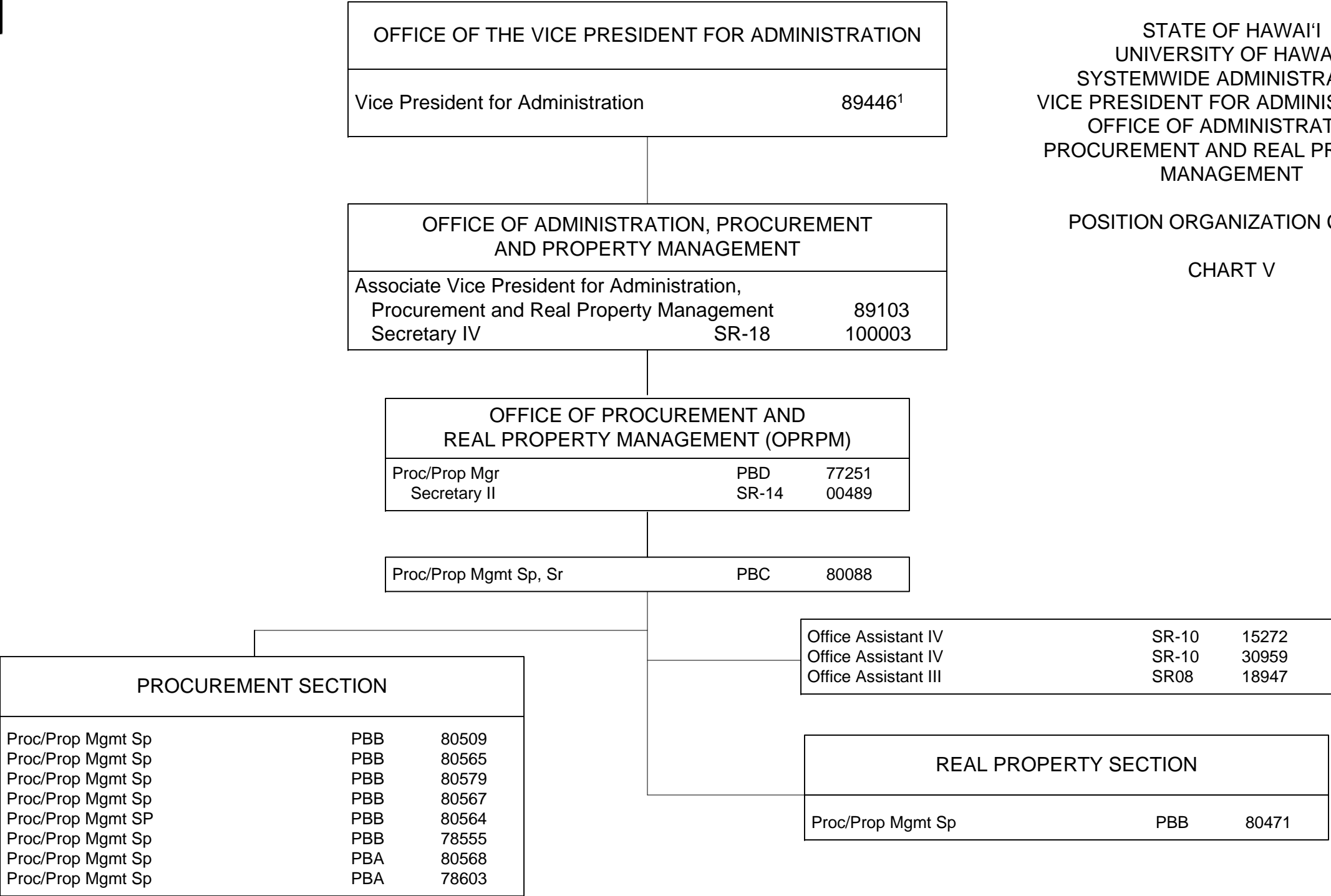
OFFICE OF ADMINISTRATION,

PROCUREMENT AND REAL PROPERTY

MANAGEMENT

POSITION ORGANIZATION CHART

CHART V



STATE OF HAWAI'I  
UNIVERSITY OF HAWAI'I  
SYSTEMWIDE ADMINISTRATION  
VICE PRESIDENT FOR ADMINISTRATION  
OFFICE OF UNIVERSITY RISK  
MANAGEMENT

POSITION ORGANIZATION CHART

CHART VI

|   |  |                    |
|---|--|--------------------|
| OFFICE OF THE VICE PRESIDENT FOR ADMINISTRATION |  |                    |
| Vice President for Administration               |  | 89446 <sup>1</sup> |

|                                      |       |        |
|--------------------------------------|-------|--------|
| OFFICE OF UNIVERSITY RISK MANAGEMENT |       |        |
| Director of Risk Management          |       | 89162  |
| Secretary III                        | SR-16 | 900066 |
| Risk Management Sp                   | PBB   | 80642  |
| Human Resources Sp                   | PBB   | 80493  |
| Risk Management Sp                   | PBB   | 78819  |

1 Excluded from positon count  
2014orgchartupdate rm.vsd