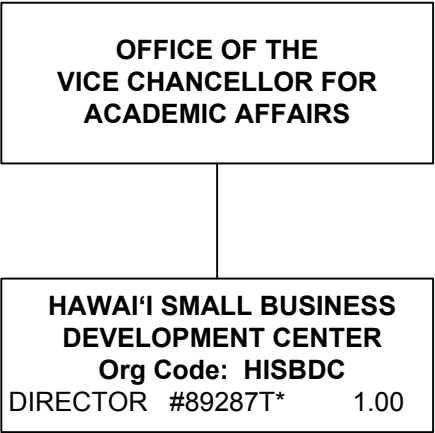


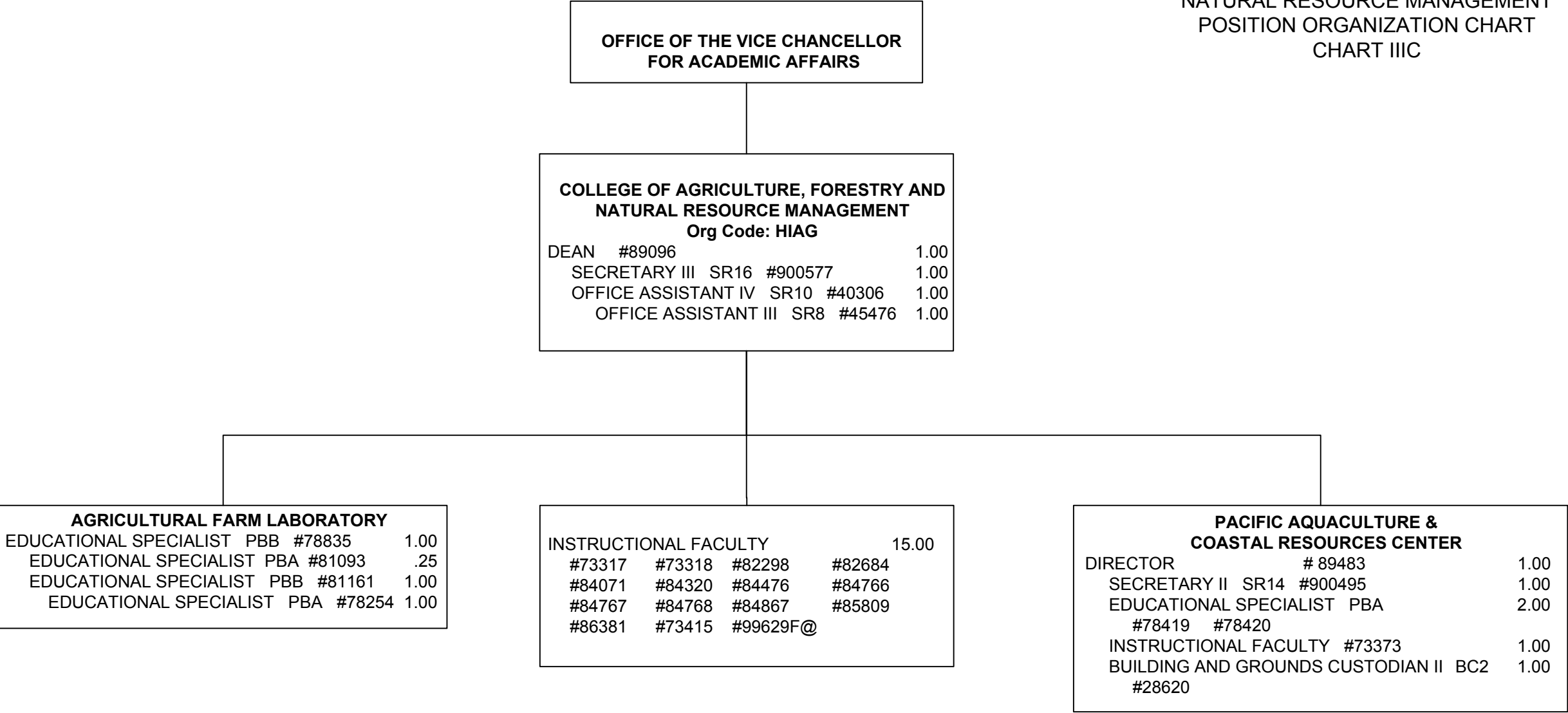
@ Pending Establishment

STATE OF HAWAI'I  
UNIVERSITY OF HAWAI'I  
UNIVERSITY OF HAWAI'I AT HILO  
ACADEMIC AFFAIRS  
HAWAI'I SMALL BUSINESS DEVELOPMENT CENTER  
POSITION ORGANIZATION CHART  
CHART IIIB

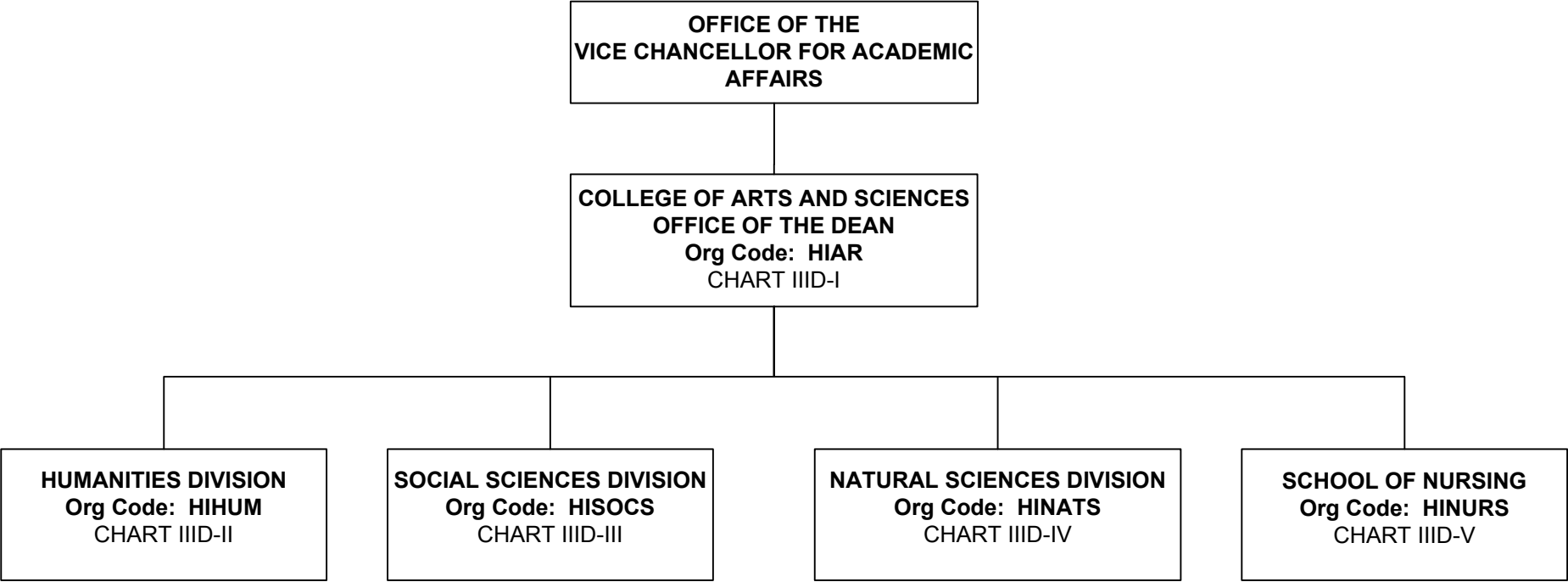


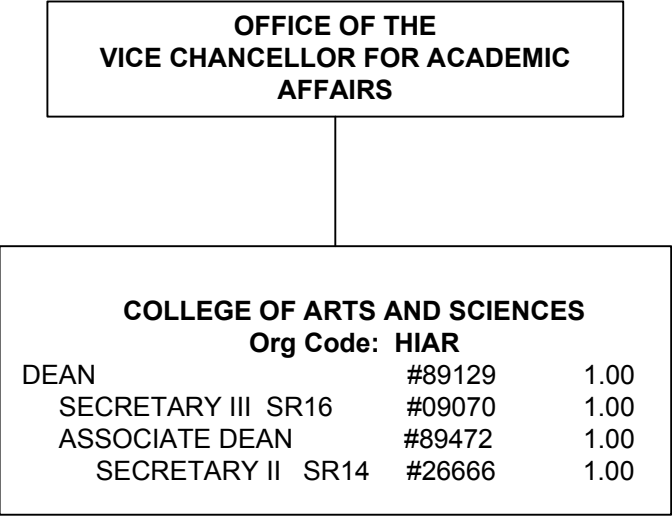
\*General Funds FTE – 1.0 (Auth. Temp.)

STATE OF HAWAI'I  
UNIVERSITY OF HAWAI'I  
UNIVERSITY OF HAWAI'I AT HILO  
ACADEMIC AFFAIRS  
COLLEGE OF AGRICULTURE, FORESTRY AND  
NATURAL RESOURCE MANAGEMENT  
POSITION ORGANIZATION CHART  
CHART IIIC



@ Pending Establishment





COLLEGE OF ARTS AND SCIENCES  
OFFICE OF THE DEAN

STATE OF HAWAI'I  
UNIVERSITY OF HAWAI'I  
UNIVERSITY OF HAWAI'I AT HILO  
ACADEMIC AFFAIRS  
COLLEGE OF ARTS AND SCIENCES  
HUMANITIES DIVISION  
POSITION ORGANIZATION CHART  
CHART IIID-II

| HUMANITIES DIVISION  |        |                  |      |
|--|--------|------------------|------|
| Org Code: HIHUM  |        |                  |      |
| CHAIR (APPOINTED FROM FACULTY POSITIONS)                     |        |                  |      |
| SECRETARY II SR14  | #21531 |                  | 1.00 |
| OFFICE ASS'T III SR8   | #28618 |                  | 1.00 |
|  |        |                  |      |
| ART  |        | Org Code: HIART  |      |
| FACULTY: #82001 #82312 #82562 #84604                         |        |                  | 4.00 |
|  |        |                  |      |
| ASIAN PACIFIC LANGUAGES                                      |        | Org Code: HIAPL  |      |
| FACULTY: #73407 #82832 #83971 #84038 #86365                  |        |                  | 5.00 |
|  |        |                  |      |
| COMMUNICATION  |        | Org Code: HICOM  |      |
| FACULTY: #73256 #73343(S) #82764 #82900 #83158 #83655 #86411 |        |                  | 7.00 |
|  |        |                  |      |
| ENGLISH  |        | Org Code: HIENG  |      |
| FACULTY: #73344(S) #82171 #82553 #82563 #83784 #83928 #84267 |        |                  | 7.00 |
|  |        |                  |      |
| EUROPEAN LANGUAGES FACULTY                                   |        | Org code: HIEL   |      |
| FACULTY: #73346  |        |                  | 1.00 |
|  |        |                  |      |
| LINGUISTICS FACULTY  |        | Org Code: HILING |      |
|  |        |                  | 0.00 |
|  |        |                  |      |
| MUSIC  |        | Org Code: HIMUS  |      |
| FACULTY: #82577 #84213 #84511                                |        |                  | 3.00 |
|  |        |                  |      |
| THEATER FACULTY:   |        | Org Code: HITHEA |      |
| FACULTY: #82775  |        |                  | 1.00 |
|  |        |                  |      |
| PHILOSOPHY   |        | Org Code: HIPHIL |      |
| FACULTY: #73368(S) #82478 #84499 #84509                      |        |                  | 4.00 |
|  |        |                  |      |
| RELIGION   |        | Org code: HIREL  |      |
| FACULTY: #82009 #82352                                       |        |                  | 2.00 |

General Funds – 33.00  
Special Funds (S) - 3.00

COLLEGE OF ARTS AND SCIENCES  
OFFICE OF THE DEAN

STATE OF HAWAI'I  
UNIVERSITY OF HAWAI'I  
UNIVERSITY OF HAWAI'I AT HILO  
ACADEMIC AFFAIRS  
COLLEGE OF ARTS AND SCIENCES  
SOCIAL SCIENCES DIVISION  
POSITION ORGANIZATION CHART  
CHART IIID-III

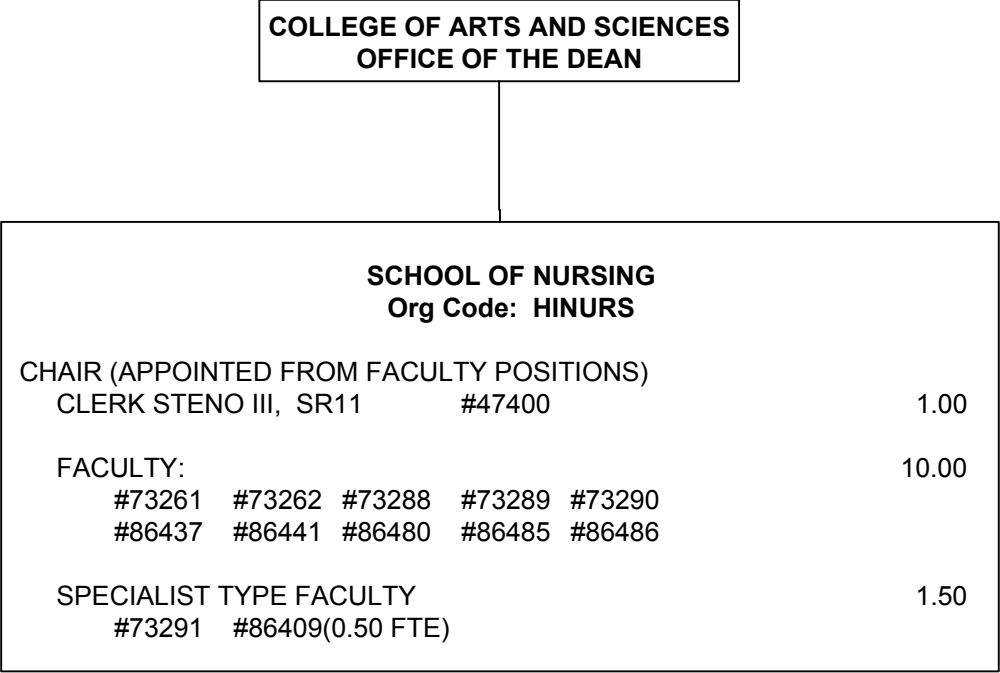
| SOCIAL SCIENCES DIVISION                       |        |                  |        |        |       |
|--|--------|------------------|--------|--------|-------|
| Org Code: HISOCS                               |        |                  |        |        |       |
| CHAIR (APPOINTED FROM INSTRUCTIONAL POSITIONS) |        |                  |        |        |       |
| SECRETARY II                                   | SR14   | #18550           |        |        | 1.00  |
| OFFICE ASSISTANT III                           | SR8    | #28623           |        |        | 1.00  |
|  |        |                  |        |        |       |
| ANTHROPOLOGY                                   |        | Org Code: HIANTH |        |        |       |
| FACULTY: #73345(S)                             | #73372 | #82214           | #82556 | #82557 | 8.00  |
| #83005   | #86481 | #99616F(S)@      |        |        |       |
|  |        |                  |        |        |       |
| EDUCATION                                      |        | Org Code: HIED   |        |        |       |
| OFFICE ASSISTANT IV,                           | SR10   | #42269+          |        |        | 1.00  |
| SPECIALIST TYPE FACULTY                        |        | #73257+          |        |        | 1.00  |
| FACULTY: #73301                                | #82654 | #83049           | #83596 | #86541 | 5.00  |
|  |        |                  |        |        |       |
| GEOGRAPHY                                      |        | Org Code: HIGEOG |        |        |       |
| FACULTY: #82899                                | #83190 | #86404           | #86414 |        | 4.00  |
|  |        |                  |        |        |       |
| HISTORY  |        | Org Code: HIHIST |        |        |       |
| FACULTY: #82179                                | #84198 | #84285           | #84483 | #86360 | 5.00  |
|  |        |                  |        |        |       |
| HPE  |        | Org Code: HIHPE  |        |        |       |
| FACULTY: #73367(S)                             | #73434 | #82781           | #83614 | #84242 | 6.00  |
| #86416   |        |                  |        |        |       |
|  |        |                  |        |        |       |
| POLITICAL SCIENCE                              |        | Org Code: HIPOLS |        |        |       |
| FACULTY: #73356(S)                             | #82309 | #83186           | #84855 | #86445 | 6.00  |
| #86450   |        |                  |        |        |       |
|  |        |                  |        |        |       |
| PSYCHOLOGY                                     |        | Org Code: HIPSY  |        |        |       |
| OFFICE ASSISTANT IV,                           | SR10   | #900518+         |        |        | 1.00  |
| FACULTY: #73254                                | #73298 | #73362           | #82349 | #82542 | 15.00 |
| #82847   | #82933 | #83107           | #83122 | #83791 |       |
| #83929   | #83981 | #86362           | #86413 | #86417 |       |
|  |        |                  |        |        |       |
| SOCIOLOGY                                      |        | Org Code: HISOC  |        |        |       |
| FACULTY: #73352                                | #82169 | #84593           | #86370 | #86488 | 5.00  |

@ Pending Establishment  
+ Reports to Department Chair

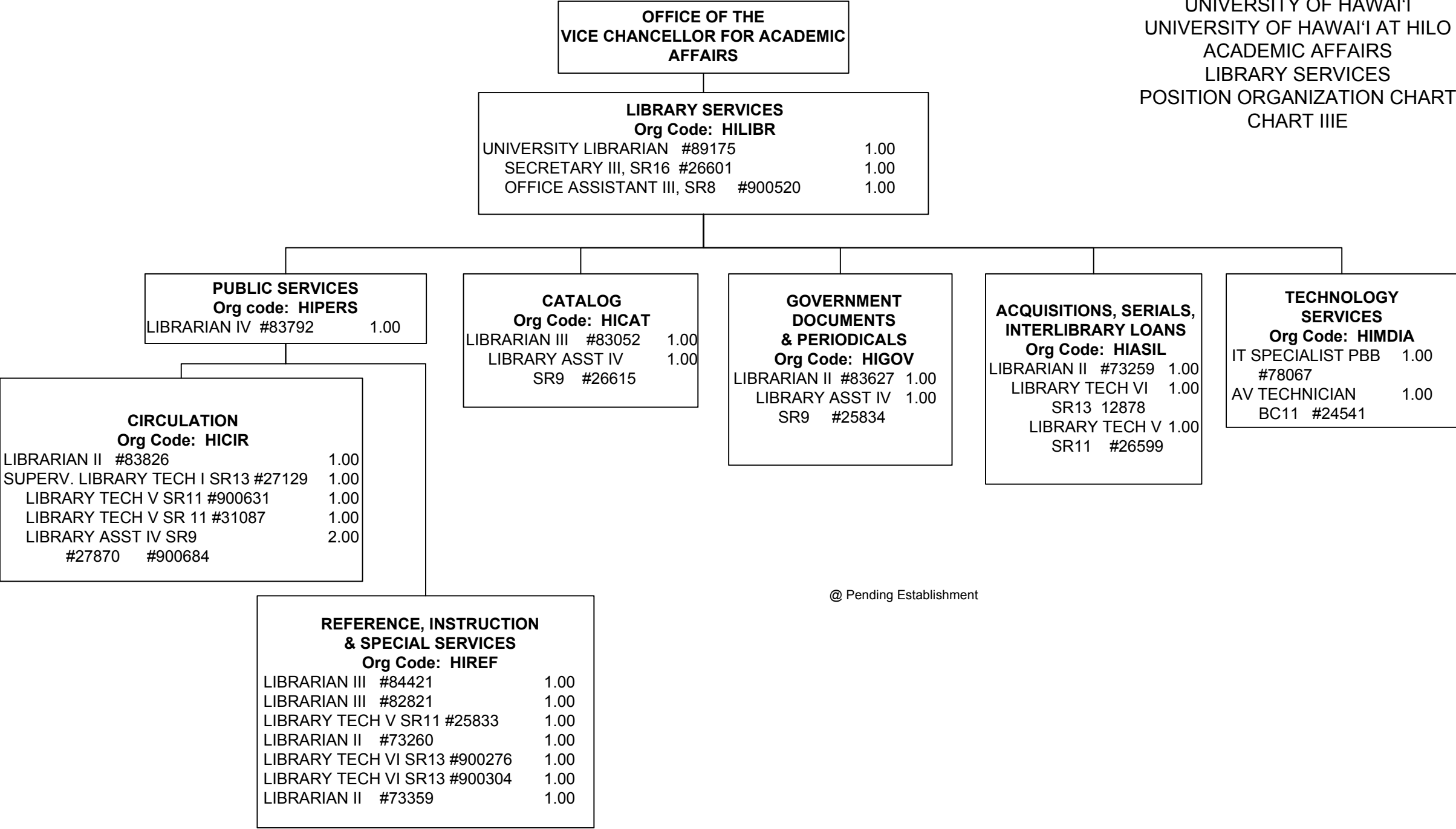


| NATURAL SCIENCES DIVISION                |  |                  |           |        |           |        |        |        |             |       |
|--|--|------------------|-----------|--------|-----------|--------|--------|--------|-------------|-------|
| Org Code: HINATS                         |  |                  |           |        |           |        |        |        |             |       |
| CHAIR (APPOINTED FROM FACULTY POSITIONS) |  |                  |           |        |           |        |        |        |             |       |
| SECRETARY II, SR14                       |  | #22484           |           |        |           |        |        | 1.00   |             |       |
| OFFICE ASSISTANT III, SR8                |  | #900516          |           | #28622 |           | 2.00   |        |        |             |       |
| BIOLOGY                                  |  | Org Code: HIBIOL |           |        |           |        |        |        |             |       |
| LAB COORDINATOR, PBA                     |  | #80902+          |           |        |           |        |        | 1.00   |             |       |
| FACULTY:                                 |  | #73299           | #73342(S) | #73363 | #73404(S) | #73435 | #82111 | #82322 | #82643      | 16.00 |
|  |  | #82909           | #83380    | #83424 | #83631    | #84063 | #84204 | #86408 | #99622F(S)@ |       |
| CHEMISTRY                                |  | Org Code: HICHEM |           |        |           |        |        |        |             |       |
| LAB COORDINATOR., PBA                    |  | #80903+          |           |        |           |        |        | 1.00   |             |       |
| FACULTY:                                 |  | #73258           | #73340(S) | #82453 | #82648    | 4.00   |        |        |             |       |
| COMPUTER SCIENCE                         |  | Org Code: HICSE  |           |        |           |        |        |        |             |       |
| IT SPECIALIST, PBB                       |  | #78643+          |           |        |           |        | 1.00   |        |             |       |
| FACULTY:                                 |  | #73371           | #83269    | #83648 | #83782    | #86449 | 5.00   |        |             |       |
| GEOLOGY-GEOPHYSICS                       |  | Org Code: HIGG   |           |        |           |        |        |        |             |       |
| EDUCATIONAL SP., PBB                     |  | #81750+          |           |        |           |        |        | 1.00   |             |       |
| FACULTY:                                 |  | #82686           | #82833    | #86412 | #87561    | 4.00   |        |        |             |       |
| MATHEMATICS                              |  | Org Code: HIMATH |           |        |           |        |        |        |             |       |
| FACULTY:                                 |  | #73255           | #73341(S) | #82381 | #82801    | #83503 | #84068 | 10.00  |             |       |
|  |  | #86361           | #86366    | #86382 | #86482    |        |        |        |             |       |
| MARINE SCIENCE                           |  | Org Code: HIMARE |           |        |           |        |        |        |             |       |
| EDUCATIONAL SPECIALIST, PBB              |  | #78641+          |           |        |           |        |        | 1.00   |             |       |
| FACULTY:                                 |  | #73348           | #82358    | #82551 | #82915    | #83157 | #83187 | #83207 | 12.00       |       |
|  |  | #84211           | #84233    | #86439 | #86483    | #86540 |        |        |             |       |
| PHYSICS                                  |  | Org Code: HIPHYS |           |        |           |        |        |        |             |       |
| EDUCATIONAL SPECIALIST, PBB              |  | #80997+          |           |        |           |        |        | 1.00   |             |       |
| FACULTY:                                 |  | #73350           | #83033    | #83815 | #86373    | #86535 | #87564 | 6.00   |             |       |
|  |  | #99620F(S)@      |           |        |           |        | 1.00   |        |             |       |

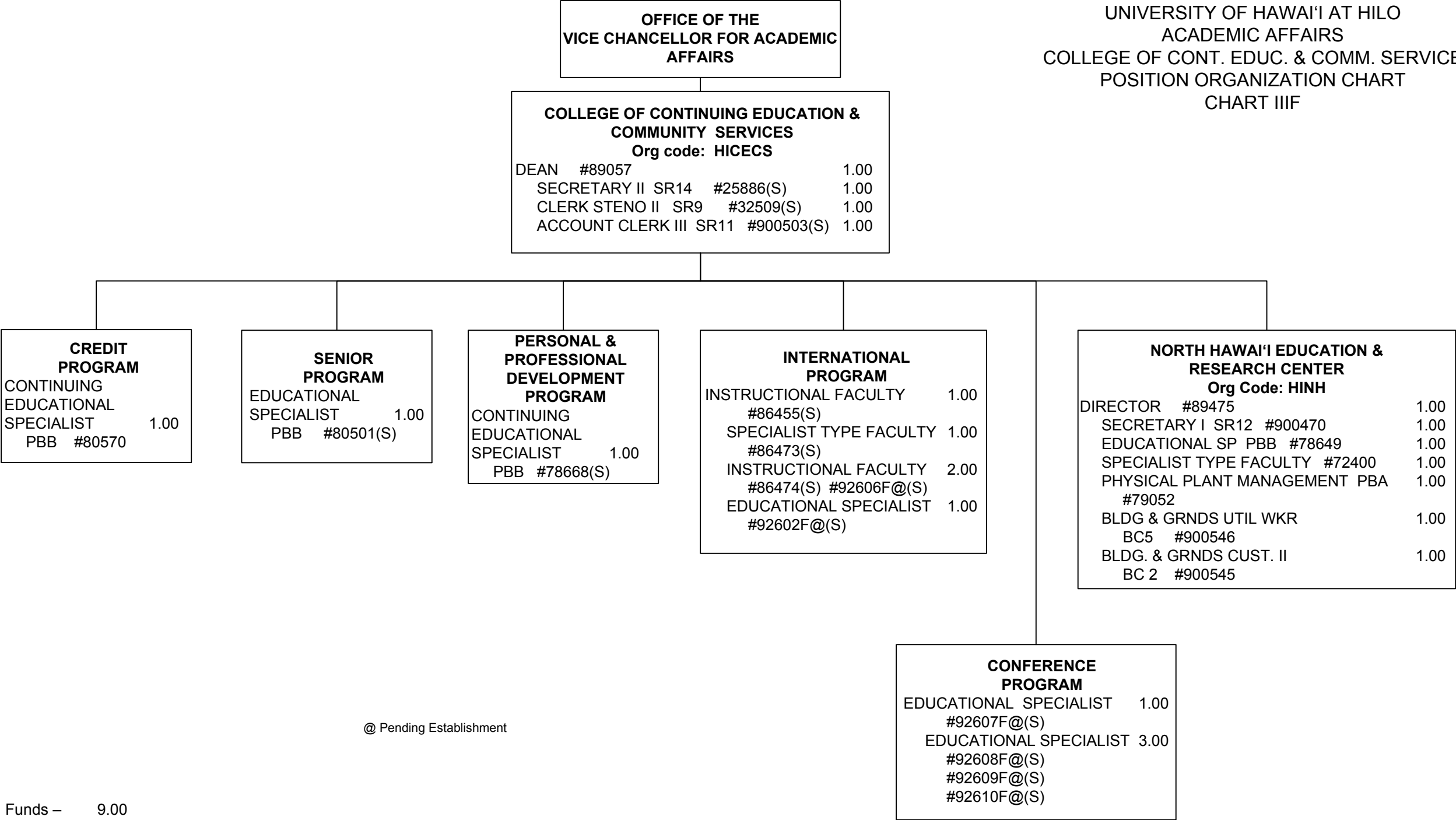
General Funds – 61.00  
Special Funds (S) – 6.00



STATE OF HAWAI'I  
UNIVERSITY OF HAWAI'I  
UNIVERSITY OF HAWAI'I AT HILO  
ACADEMIC AFFAIRS  
LIBRARY SERVICES  
POSITION ORGANIZATION CHART  
CHART IIIIE

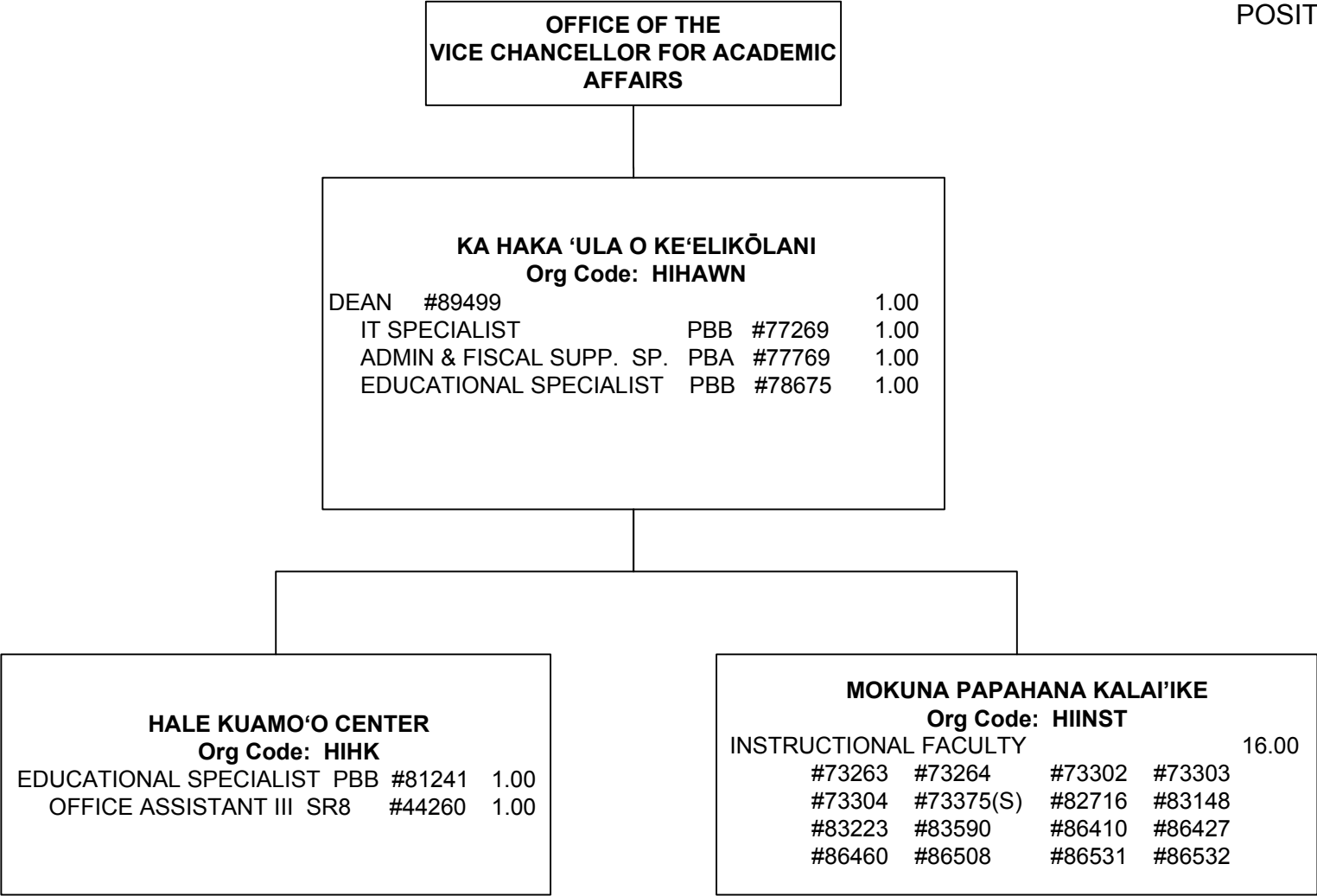


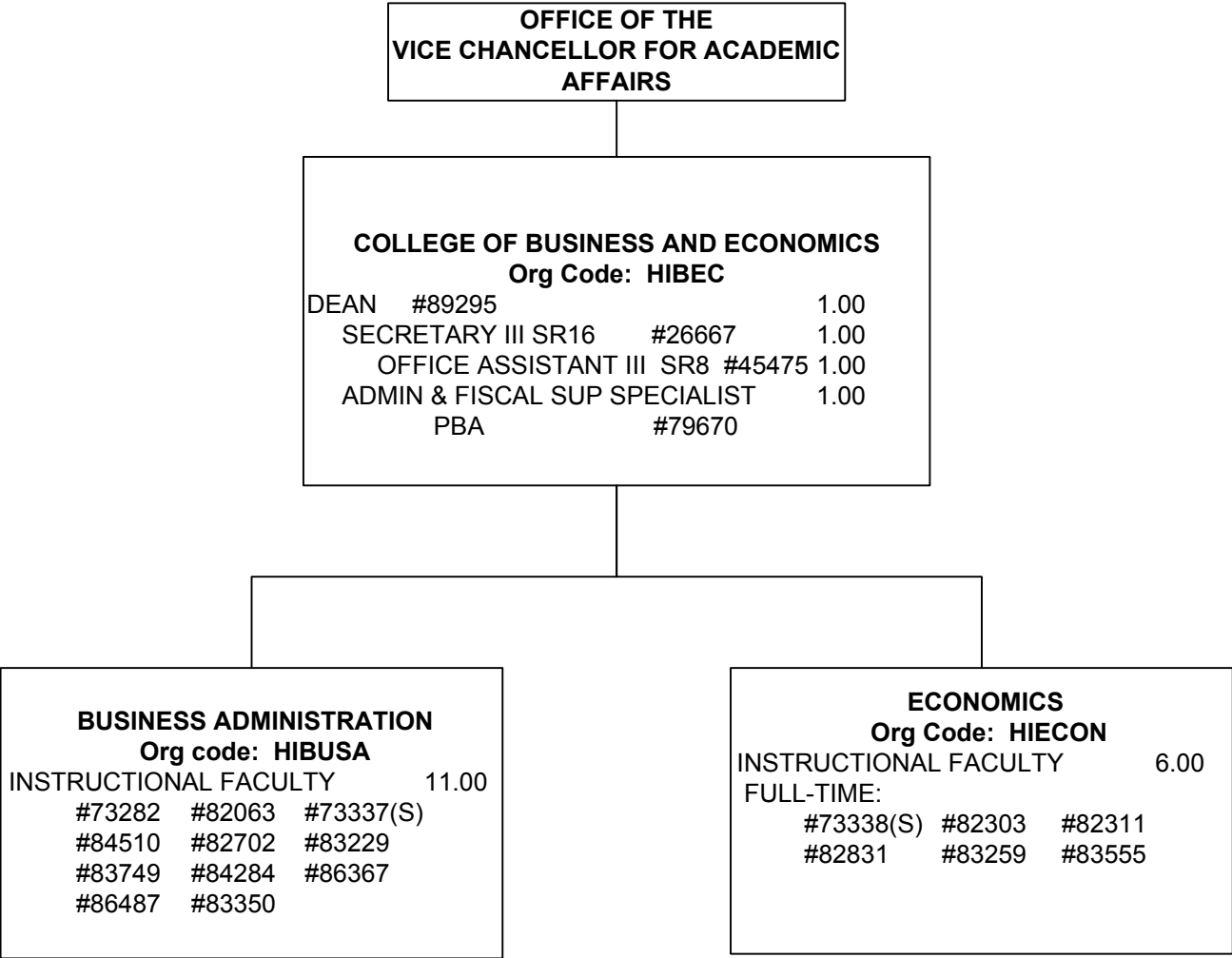
STATE OF HAWAI'I  
UNIVERSITY OF HAWAI'I  
UNIVERSITY OF HAWAI'I AT HILO  
ACADEMIC AFFAIRS  
COLLEGE OF CONT. EDUC. & COMM. SERVICE  
POSITION ORGANIZATION CHART  
CHART IIIF



General Funds – 9.00  
Special Funds (S) – 14.00

STATE OF HAWAI'I  
UNIVERSITY OF HAWAI'I  
UNIVERSITY OF HAWAI'I AT HILO  
ACADEMIC AFFAIRS  
KA HAKA 'ULA O KE'ELIKŌLANI  
POSITION ORGANIZATION CHART  
CHART IIIG

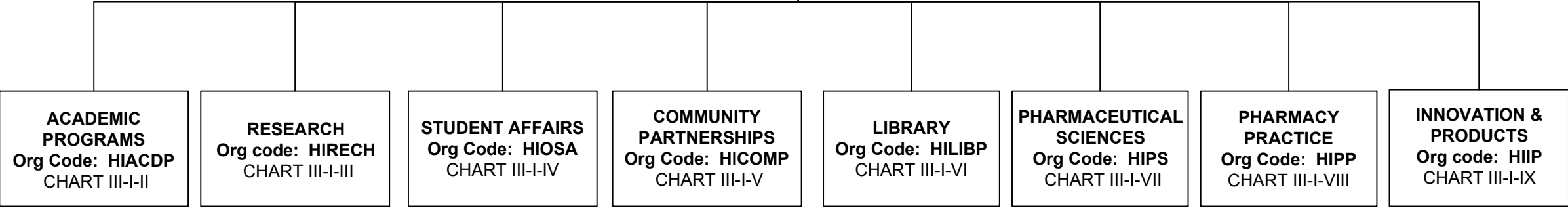


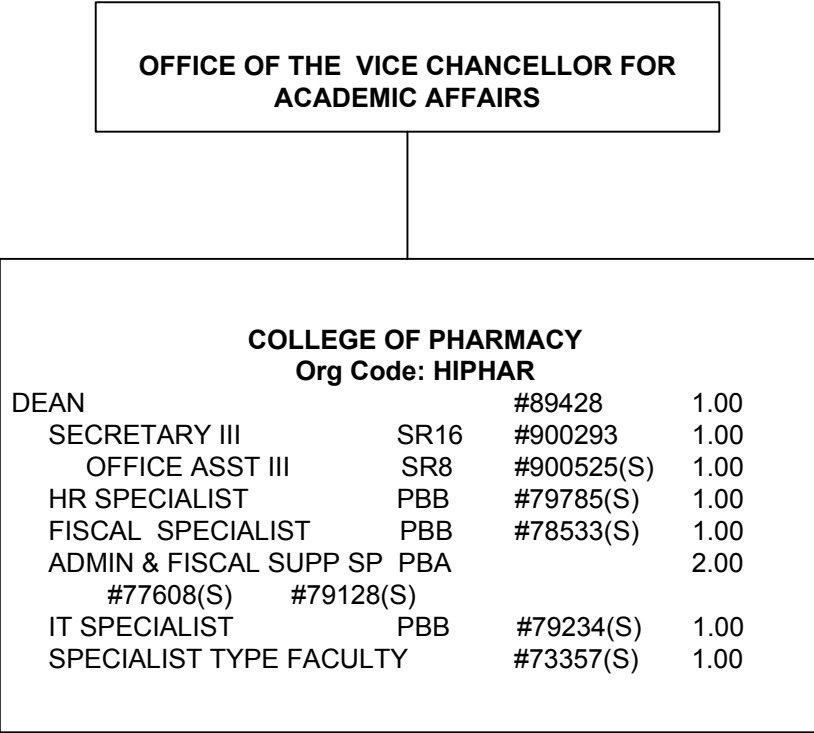


STATE OF HAWAI'I  
UNIVERSITY OF HAWAI'I  
UNIVERSITY OF HAWAI'I AT HILO  
ACADEMIC AFFAIRS  
COLLEGE OF PHARMACY  
POSITION ORGANIZATION CHART  
CHART III-I

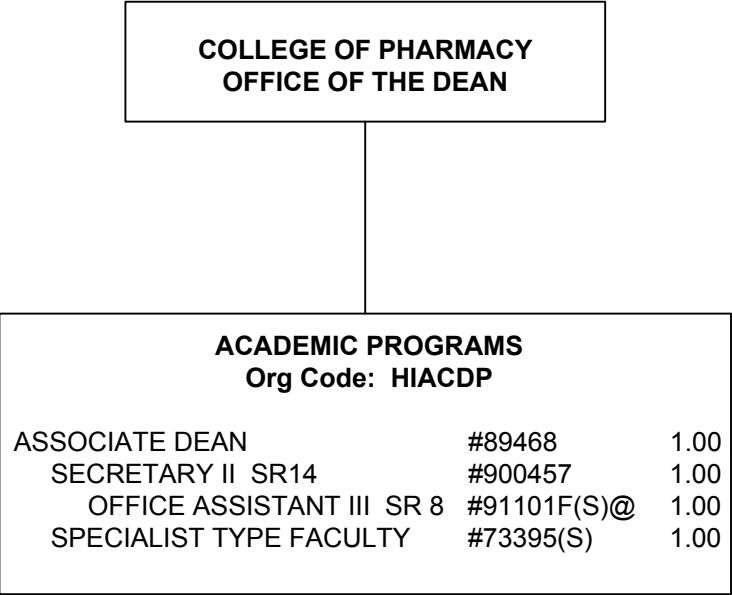
OFFICE OF THE VICE CHANCELLOR  
FOR ACADEMIC AFFAIRS

COLLEGE OF PHARMACY  
OFFICE OF THE DEAN  
Org Code: HIPHAR  
CHART III-I-I









@ Pending Establishment

