

**STATE OF HAWAI'I**  
**UNIVERSITY OF HAWAI'I**  
**UNIVERSITY OF HAWAI'I AT MANOA**  
**COLLEGE OF HEALTH SCIENCES & SOCIAL WELFARE**  
**SCHOOL OF NURSING AND DENTAL HYGIENE**  
**ORGANIZATION CHART**  
**CHART I**

Grand Total by Fund:  
General Funds: 69.00 FTE  
Special Funds: 3.00 FTE

**OFFICE OF THE CHANCELLOR,**  
**UNIVERSITY OF HAWAI'I AT MANOA**

**OFFICE OF THE VICE CHANCELLOR FOR**  
**ACADEMIC AFFAIRS**  
**UNIVERSITY OF HAWAI'I AT MANOA**

**SCHOOL OF NURSING AND**  
**DENTAL HYGIENE**  
**OFFICE OF THE DEAN**  
**Org Code: MADNND**  
Chart II

**ACADEMIC PROGRAMS**  
**Org Code: MAACND**  
Chart III

**AW INTERNATIONAL CENTER FOR HEALTH AND**  
**HEALING EDUCATION**  
**Org Code: MACHHE**  
Chart IV

**HAWAI'I STATE**  
**CENTER FOR NURSING**  
**Org Code: MAHSCN**  
Chart V

**STATE OF HAWAI'I**  
**UNIVERSITY OF HAWAI'I**  
**UNIVERSITY OF HAWAI'I AT MANOA**  
**COLLEGE OF HEALTH SCIENCES & SOCIAL WELFARE**  
**SCHOOL OF NURSING AND DENTAL HYGIENE**  
**ORGANIZATION CHART**  
**CHART II**

General Funds: 21.00 FTE

School of Nursing and Dental Hygiene  
 Community Advisory

**OFFICE OF THE DEAN**  
**Org Code: MADNND**

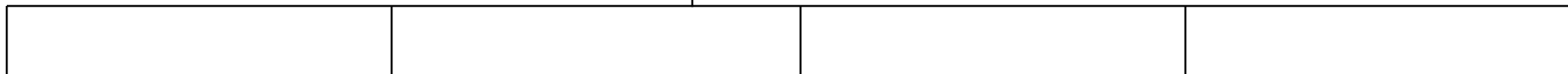
Dean, # 89118	1.00
Secretary III, SR-16, #14345	1.00
Office Assistant III, #97022F	1.00
Administrative Svcs Mgr, PBC, #78528	1.00
Personnel Officer, PBB, #78647	1.00
Specialist Type Faculty:	
#85814 (Community Partnerships)	1.00

**ADMINISTRATIVE SERVICES**  
**Org Code: MAASND**

Admin Officer, PBB, #80187	1.00
Admin Officer, PBB, #80830	1.00
Secretary I, SR-12, #26225	1.00

**INFORMATION TECHNOLOGY**  
**Org Code: MAITND**

Network Specialist, PBB, #78180	1.00
---------------------------------	------



**ACADEMIC AFFAIRS**  
**Org Code: MAAAND**

Associate Dean, #89156	1.00
Secretary II, SR-14, #40636	1.00

**'IKE AO PONO**  
**Org Code: MAIAND**

Specialist Type Faculty:	
#82345	1.00
#70279	1.00
Instructional Faculty:	
#85384	1.00
Acad Advisor, PBB, #77612	1.00

**STUDENT SERVICES**  
**Org Code: MASSND**

Specialist Type Faculty:	
#85791	1.00
Student Services Specialist, PBB, #78179	1.00

**TRANSLATIONAL HEALTH  
 SCIENCE SIMULATION**  
**Org Code: MATHND**

Instructional Faculty:	
#83969	1.00

**RESEARCH**  
**Org Code: MARSND**

Associate Dean (Research), #89491	1.00
Admin Officer, PBB, #78178	1.00

**STATE OF HAWAII**  
**UNIVERSITY OF HAWAII**  
**UNIVERSITY OF HAWAII AT MANOA**  
**COLLEGE OF HEALTH SCIENCES & SOCIAL WELFARE**  
**SCHOOL OF NURSING AND DENTAL HYGIENE**  
**ORGANIZATION CHART**  
**CHART III**

General Funds: 48.00 FTE

**OFFICE OF THE DEAN**  
**Org Code: MADNND**

**ACADEMIC PROGRAMS**

**DEPARTMENT OF NURSING**  
**Org Code: MANURS**

Chairperson (appointed from the Faculty)	
Secretary II, SR-14, #12855	1.00
Admin & Fiscal Support Sp, PBB, #79590	1.00
Office Assistant II, SR-08, #15288	1.00
Office Assistant III, SR-08, #40635	1.00
Instructional Faculty:	
#70026, #70173, #82289, #82593, #82768, #82805, #83000, #83061, #83066, #83095, #83451, #83685, #83724, #83793, #83819, #84149, #84219, #84424, #84428, #84906, #84988, #84991, #85799, #85801, #85802, #85819, #85820, #85822, #86456, #87620	30.00
Specialist Type Faculty:	
#82431	1.00
Research Type Faculty:	
#83227	1.00

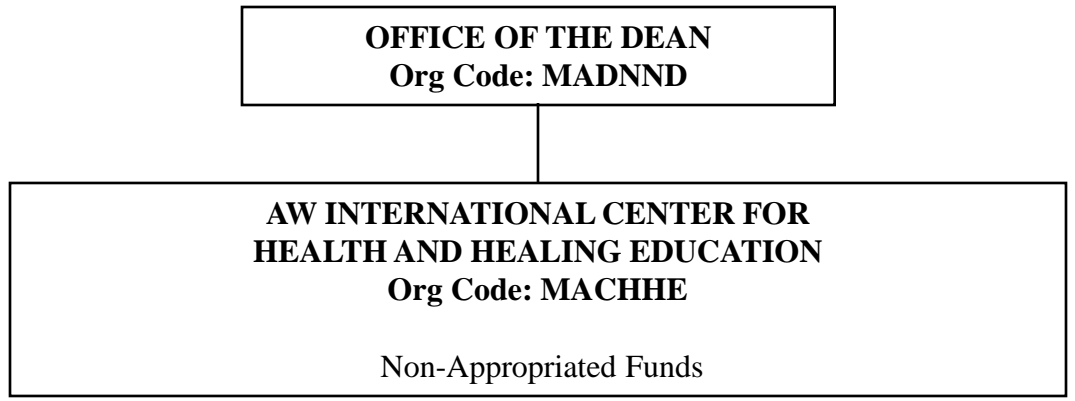
**DEPARTMENT OF DENTAL HYGIENE**  
**Org Code: MADH**

Chairperson (appointed from the Faculty)	
Secretary II, SR-14, #15289	1.00
Office Assistant III, SR-08, #36383	1.00
Instructional Faculty:	
#70052, #70053, #70054, #82634, #82873, #85152, #85804 #87422, #82984 (0.50), #84582 (0.50), #84607 (0.50), #87423 (0.50)	10.00

**CHART UPDATED**  
**DATE: July 1, 2014**

**STATE OF HAWAII**  
**UNIVERSITY OF HAWAII**  
**UNIVERSITY OF HAWAII AT MANOA**  
**COLLEGE OF HEALTH SCIENCES & SOCIAL WELFARE**  
**SCHOOL OF NURSING AND DENTAL HYGIENE**  
**ORGANIZATION CHART**  
**CHART IV**

General Funds: 0.00 FTE



Note: Center currently not in operation

**STATE OF HAWAII**  
**UNIVERSITY OF HAWAII**  
**UNIVERSITY OF HAWAII AT MANOA**  
**COLLEGE OF HEALTH SCIENCES & SOCIAL WELFARE**  
**SCHOOL OF NURSING AND DENTAL HYGIENE**  
**ORGANIZATION CHART**  
**CHART V**

General Funds: 0.00 FTE  
Special Funds: 3.00 FTE

