

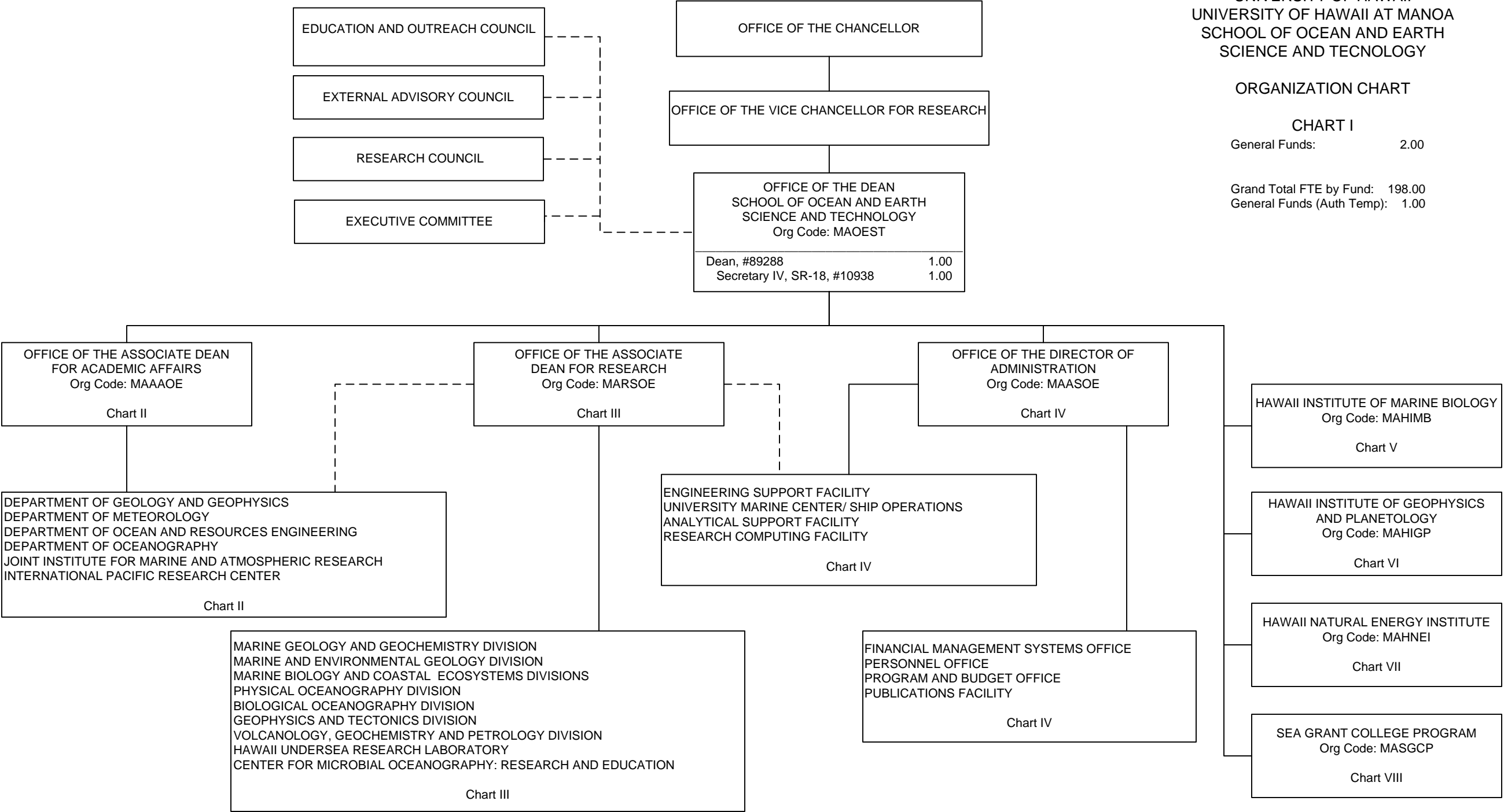
STATE OF HAWAII
UNIVERSITY OF HAWAII
UNIVERSITY OF HAWAII AT MANOA
SCHOOL OF OCEAN AND EARTH
SCIENCE AND TECNOLOGY

ORGANIZATION CHART

CHART I

General Funds: 2.00

Grand Total FTE by Fund: 198.00
General Funds (Auth Temp): 1.00



OFFICE OF THE DEAN

SCHOOL OF OCEAN AND EARTH

SCIENCE AND TECHNOLOGY

OFFICE OF THE ASSOCIATE DEAN FOR ACADEMIC AFFAIRS

Org Code: MAAAOE

Assoc. Dean, #892671.00

Secretary III, SR-16, #425411.00

Student Svcs Spec, PBB, #788971.00

STATE OF HAWAII

UNIVERSITY OF HAWAII

UNIVERSITY OF HAWAII AT MANOA

SCHOOL OF OCEAN AND EARTH

SCIENCE AND TECHNOLOGY

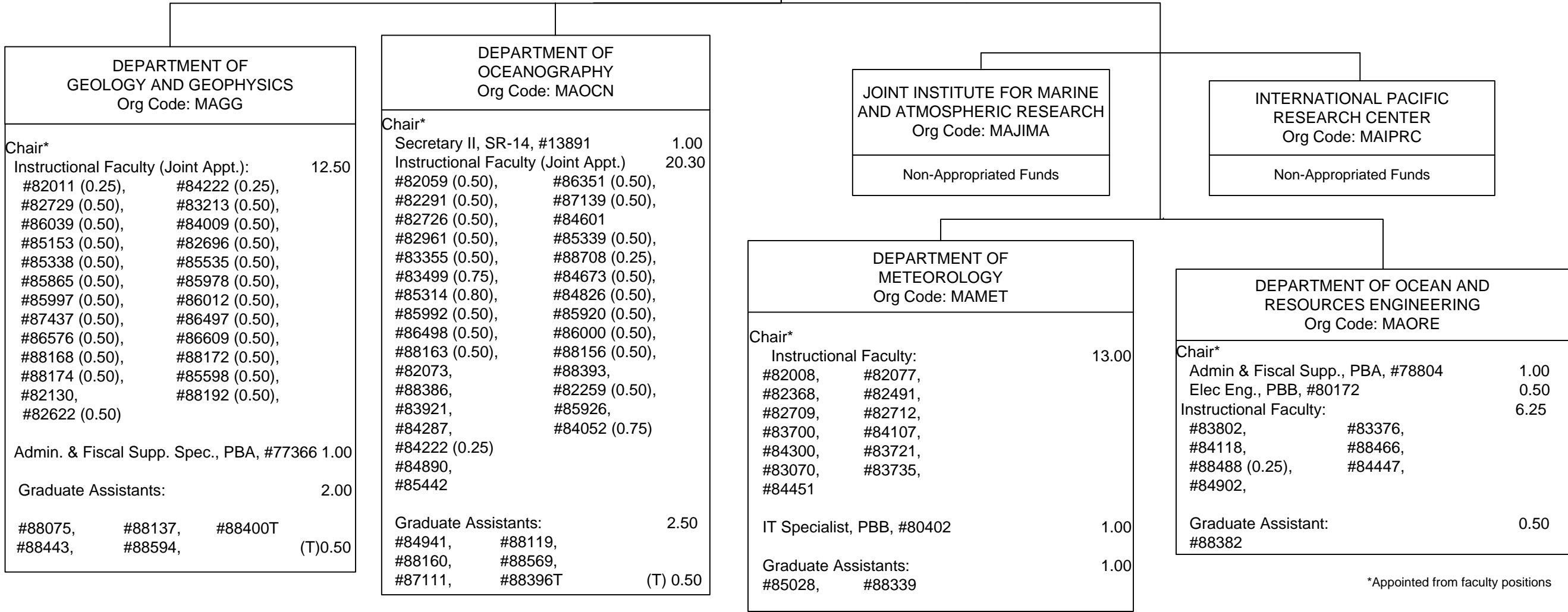
DEPARTMENTS

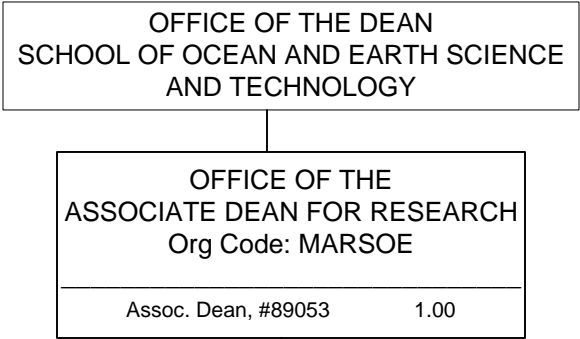
POSITION ORGANIZATION CHART

CHART II

General Funds:65.55

General Funds (Auth Temp): 1.00

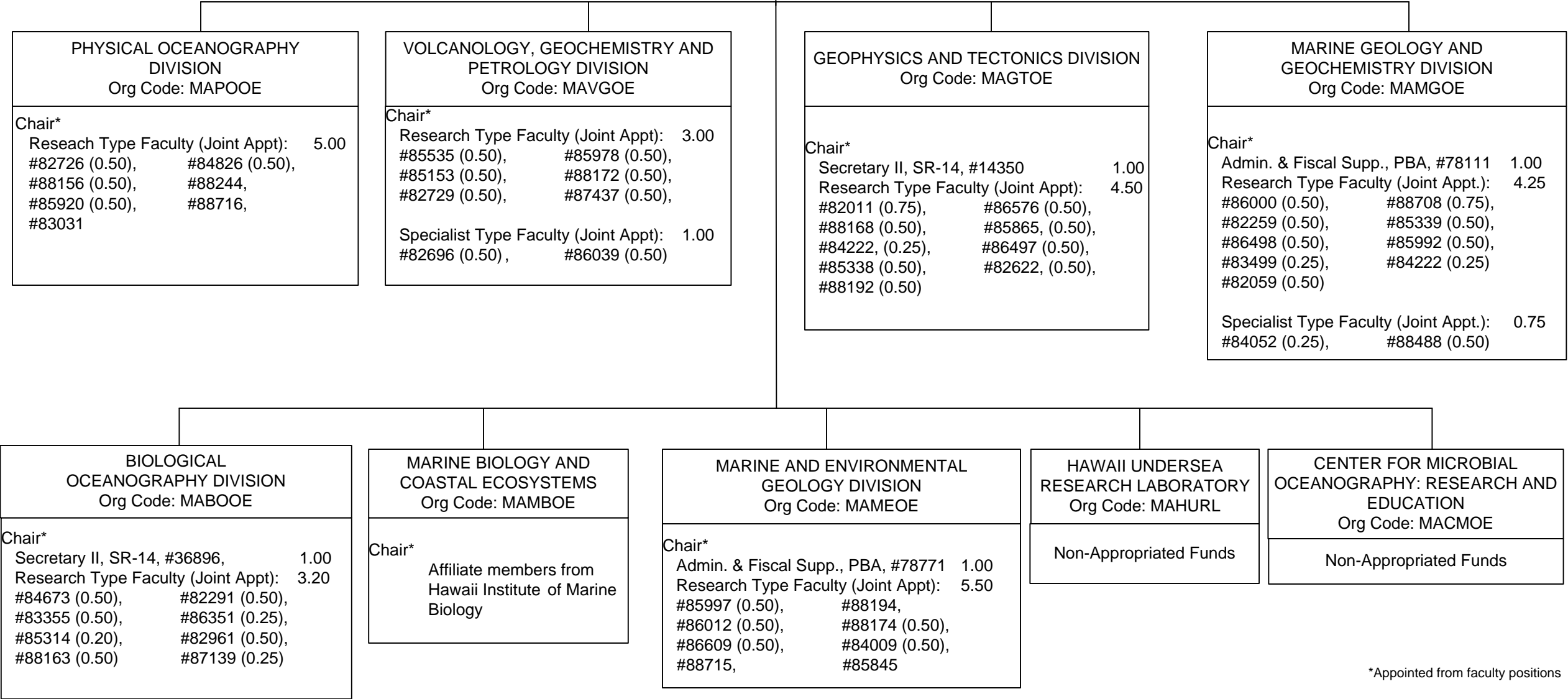




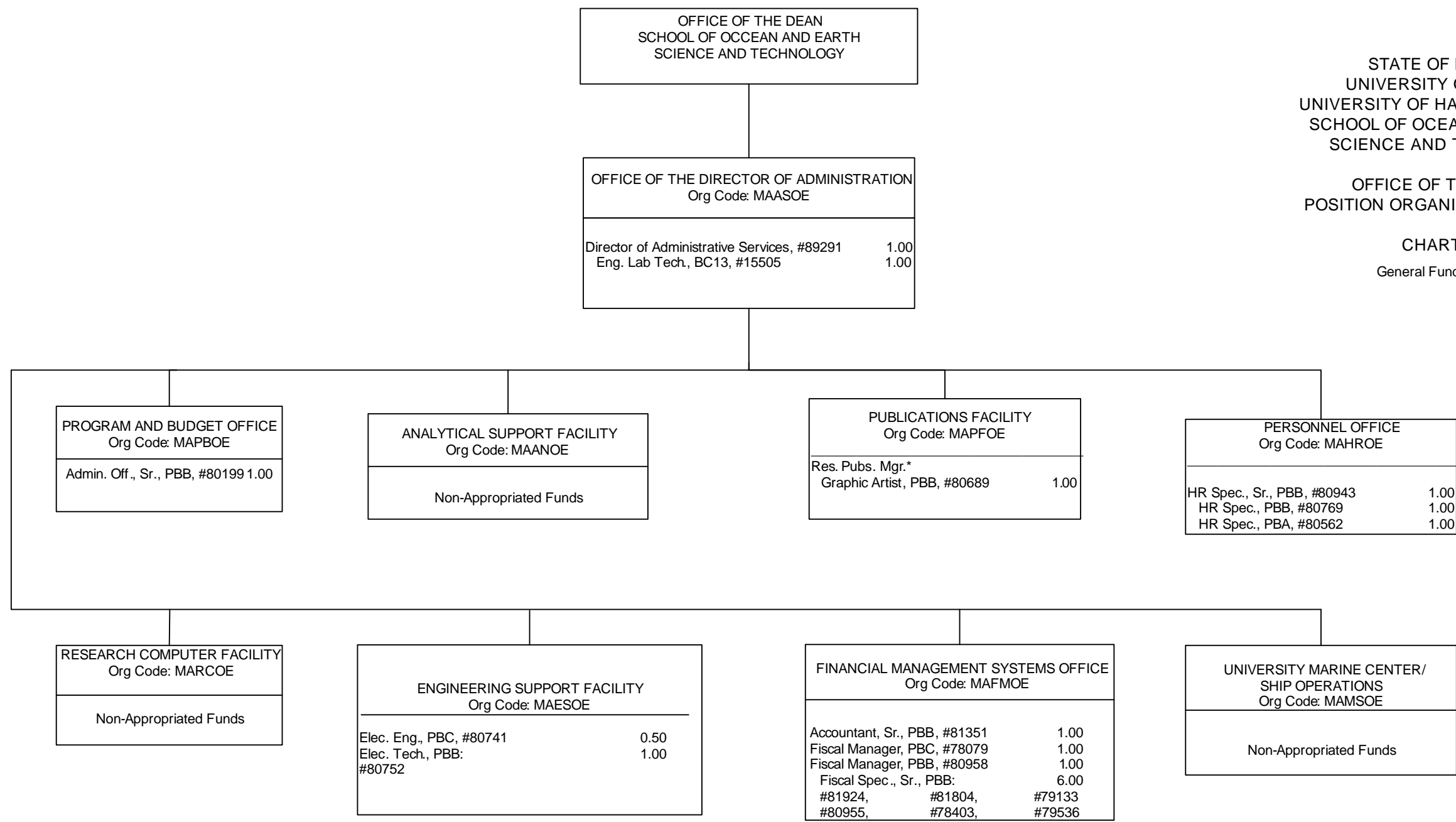
STATE OF HAWAII
UNIVERSITY OF HAWAII
UNIVERSITY OF HAWAII AT MANOA
SCHOOL OF OCEAN AND EARTH
SCIENCE AND TECHNOLOGY

RESEARCH DIVISIONS
POSITION ORGANIZATION CHART

CHART III
General Funds: 32.20



*Appointed from faculty positions



STATE OF HAWAII
UNIVERSITY OF HAWAII
UNIVERSITY OF HAWAII AT MANOA
SCHOOL OF OCEAN AND EARTH
SCIENCE AND TECNOLOGY

OFFICE OF THE DEAN
POSITION ORGANIZATION CHART

CHART IV
General Funds: 17.50

OFFICE OF THE DIRECTOR
HAWAII INSTITUTE OF MARINE BIOLOGY
Org Code: MAHIMB

Director, #890051.00

Admin Officer, PBB, #784391.00

Admin & Fisc. Supp. Sp., PBA, #784931.00

Research Associate, PBB, #782781.00

STATE OF HAWAII
UNIVERSITY OF HAWAII
UNIVERSITY OF HAWAII AT MANOA
SCHOOL OF OCEAN AND EARTH
SCIENCE AND TECHNOLOGY

HAWAII INSTITUTE OF MARINE BIOLOGY
POSITION ORGANIZATION CHART

CHART V

General Funds: 17.00

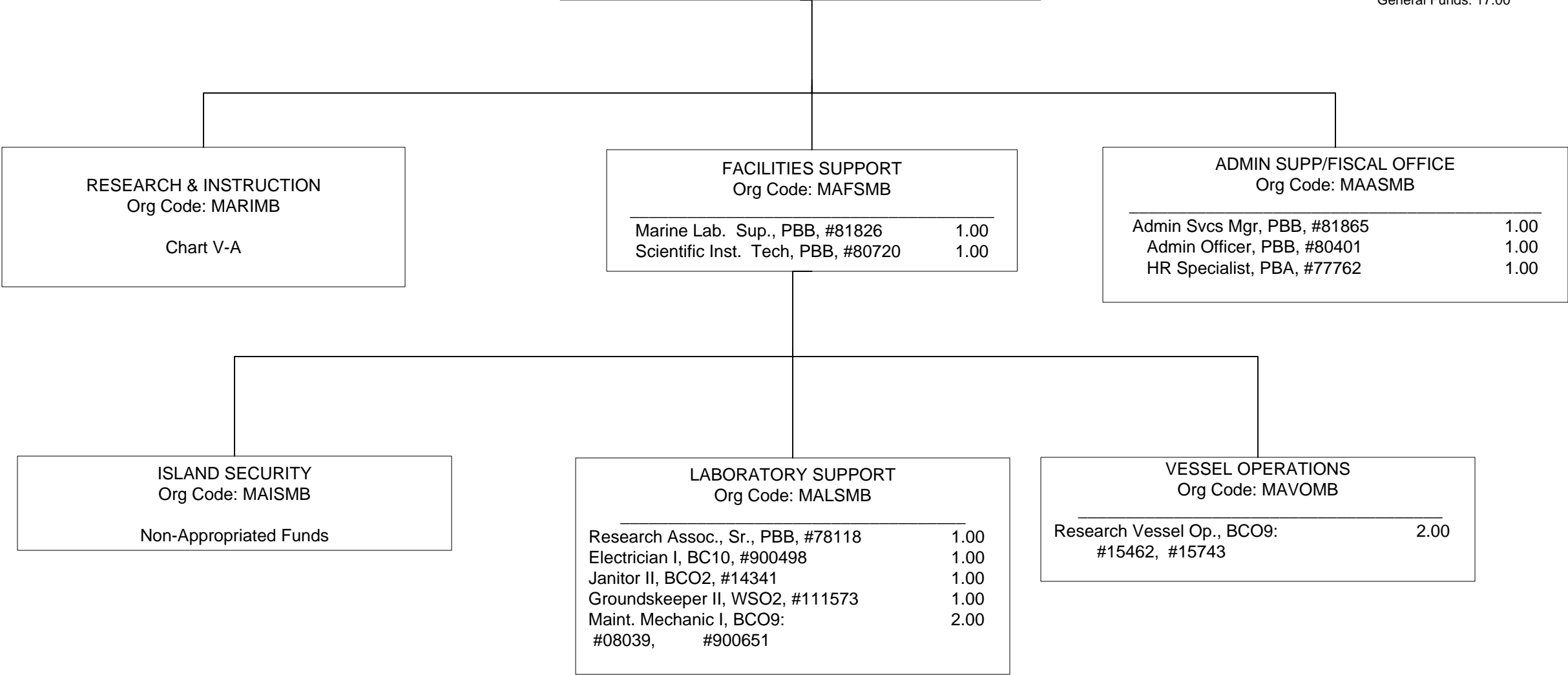
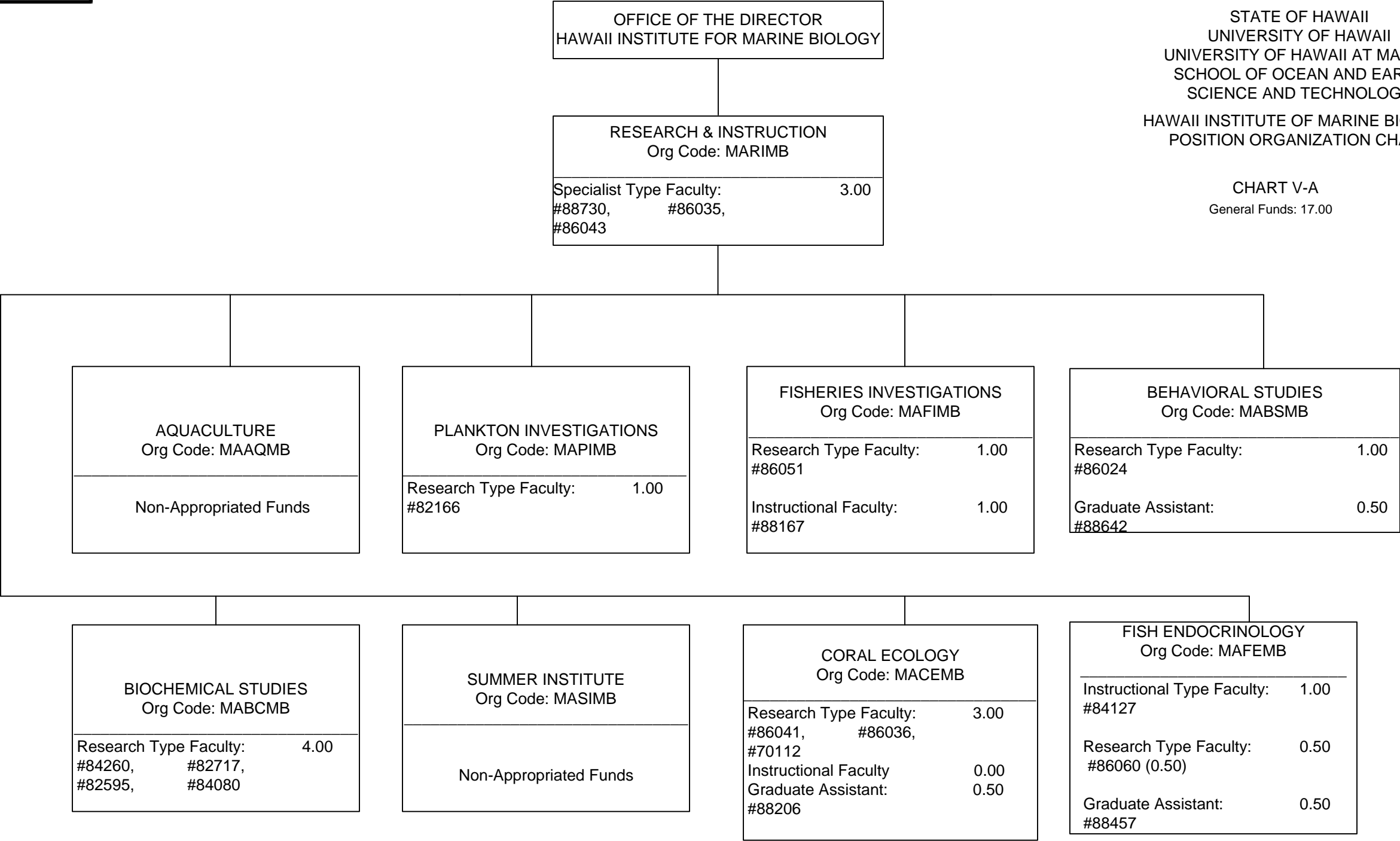
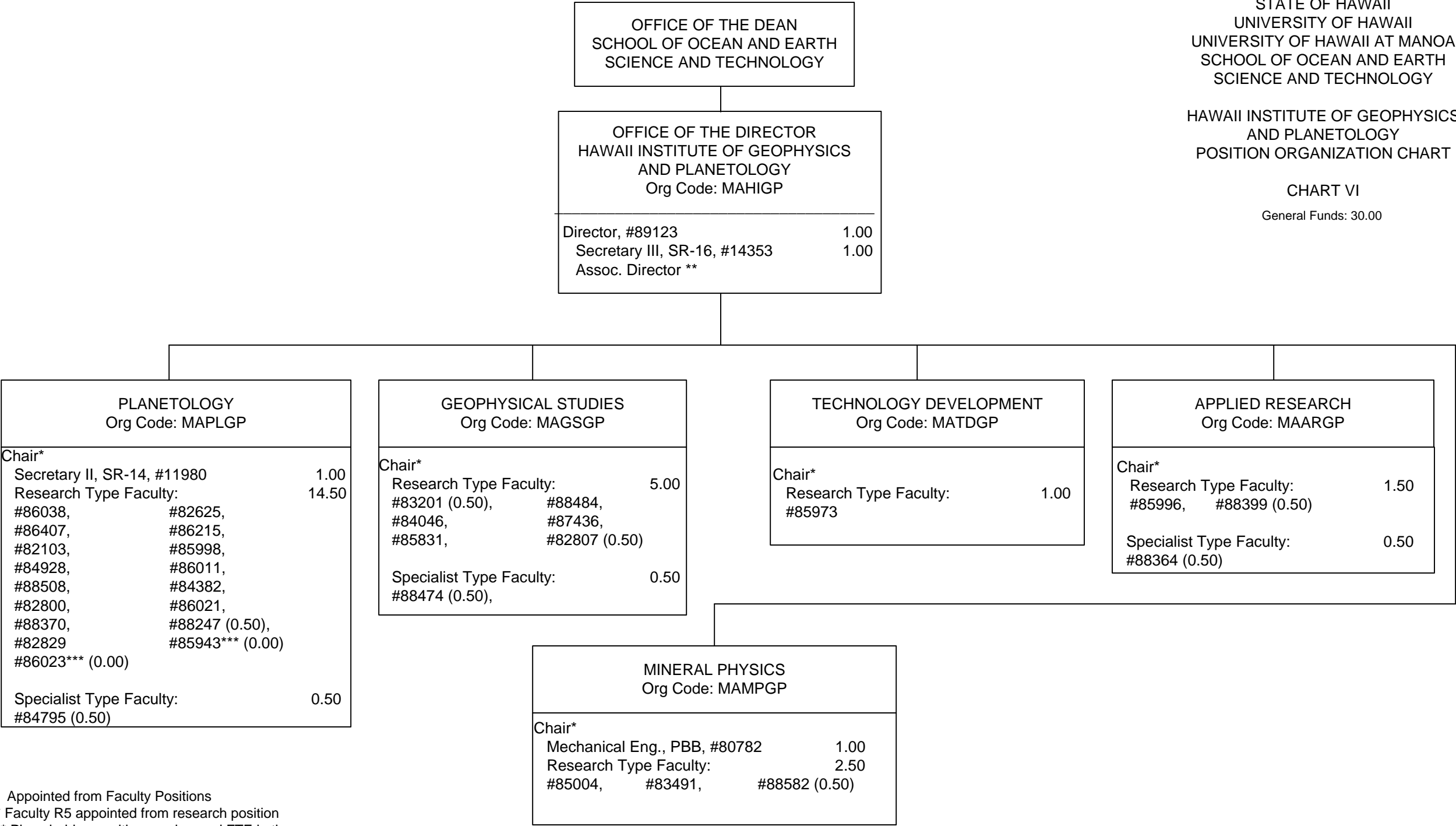


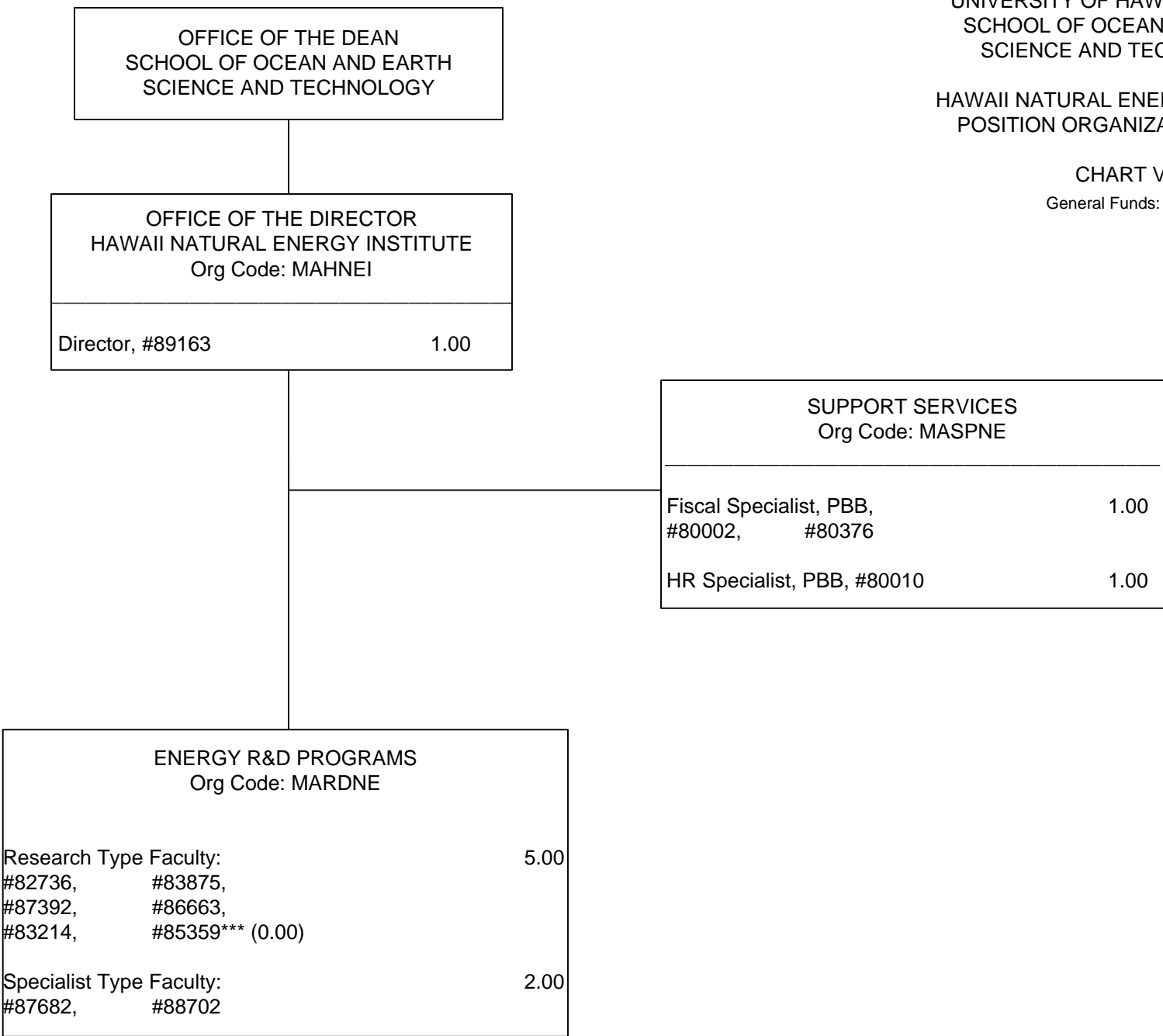
CHART V-A
General Funds: 17.00





* Appointed from Faculty Positions
** Faculty R5 appointed from research position
*** Place holder, position number and FTE in the
chancellor's pool

CHART VII
General Funds: 11.00



*** Place holder, position number and
FTE in the chancellor's pool

