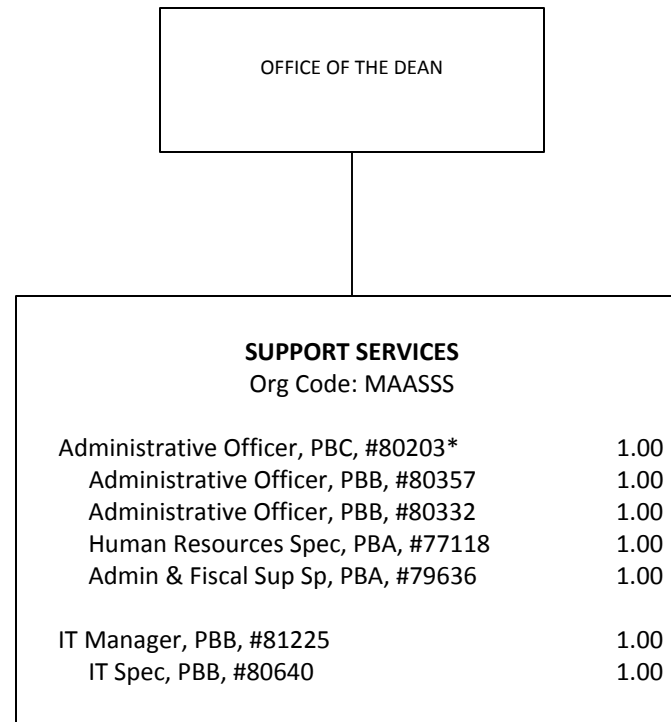


STATE OF HAWAII
UNIVERSITY OF HAWAII
UNIVERSITY OF HAWAII AT MANOA
COLLEGE OF ARTS AND SCIENCES
COLLEGE OF SOCIAL SCIENCES
ORGANIZATIONAL CHART
CHART I

GENERAL FUNDS: 3.50 FTE

TOTAL GENERAL FUND FTE: 239.75
TOTAL GENERAL FUND AUTH TEMP: 4.25

General Fund FTE: 7.00



* Provides technical supervision to positions #77767, #80107, #81943 (Chart III)

STATE OF HAWAII
UNIVERSITY OF HAWAII
UNIVERSITY OF HAWAII AT MANOA
COLLEGE OF ARTS AND SCIENCES
COLLEGE OF SOCIAL SCIENCES
SOCIAL SCIENCE RESEARCH INSTITUTE
ORGANIZATIONAL CHART
CHART III

General Fund FTE: 17.25
Authorized Temps: 0.75

OFFICE OF THE DEAN

SOCIAL SCIENCE RESEARCH INSTITUTE
OFFICE OF THE DIRECTOR
Org Code: MASSRI

Director, #86226	1.00
Specialist Type Faculty: #88743, #88751 (0.75)	1.75
Adm & Fiscal Support Sp, PBA, #80087, #80819T (0.25)	1.00
	0.25T

Support Services
Org Code: MAASRI

Administrative Officer, PBB #77767, #80107, #81943	3.00
---	------

ECONOMIC RESEARCH ORGANIZATION
Org Code: MARSRI

Instr Type Faculty, #84797	0.50
Instr Type Faculty, #84871	1.00
Specialist Type Faculty: #84643, #84870, #85736	3.00
#88133T	0.50T
IT Specialist, PBB, #79547	1.00

CENTER FOR ORAL HISTORY
Org Code: MAOHRI

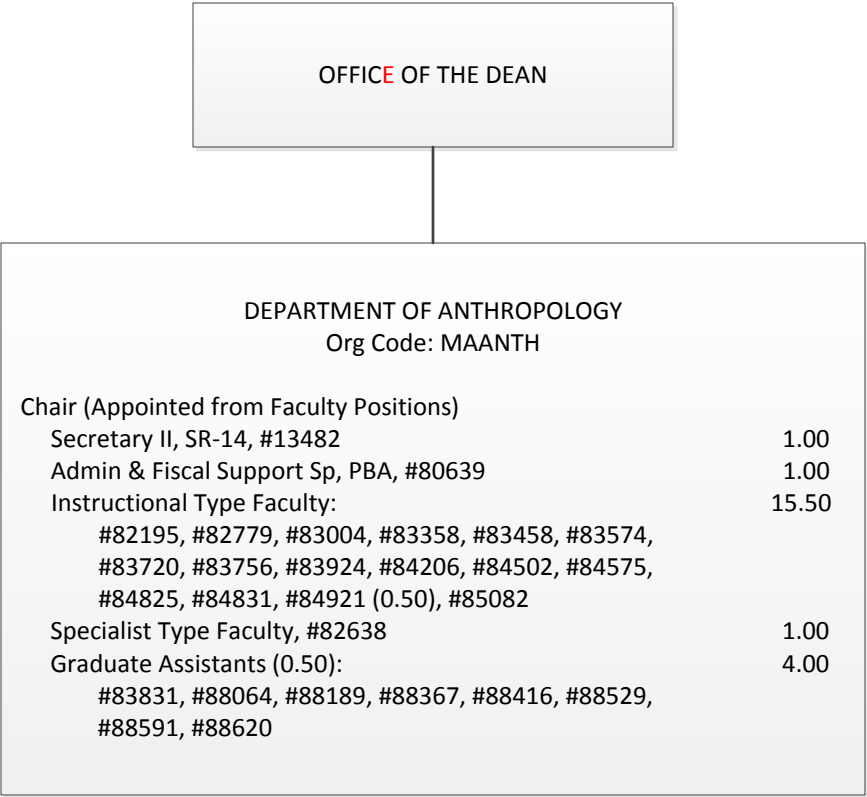
Ed Specialist, PBB, #80813	1.00
Research Assoc, PBB, #80935	1.00
Research Assoc, PBA, #77024 (0.50)	0.50

CENTER FOR YOUTH RESEARCH
Org Code: MAYRRI

Instr Type Faculty, #84797	0.50
Ed Specialist, PBB, #80531	1.00

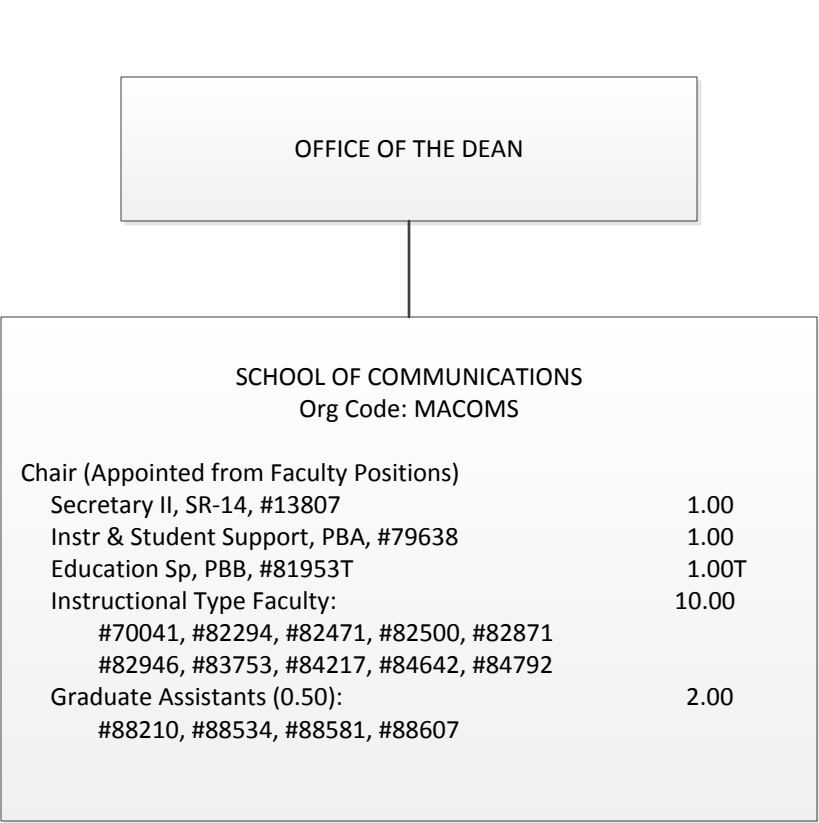
TELECOMMUNICATIONS & SOCIAL INFORMATICS (TASI)
RESEARCH PROGRAM / PEACESAT
Org Code: MAPSAT

Specialist Type Faculty, #86225	1.00
---------------------------------	------



STATE OF HAWAII
UNIVERSITY OF HAWAII
UNIVERSITY OF HAWAII AT MANOA
COLLEGE OF ARTS AND SCIENCES
COLLEGE OF SOCIAL SCIENCES
DEPARTMENT OF ANTHROPOLOGY
ORGANIZATIONAL CHART
CHART IV-A

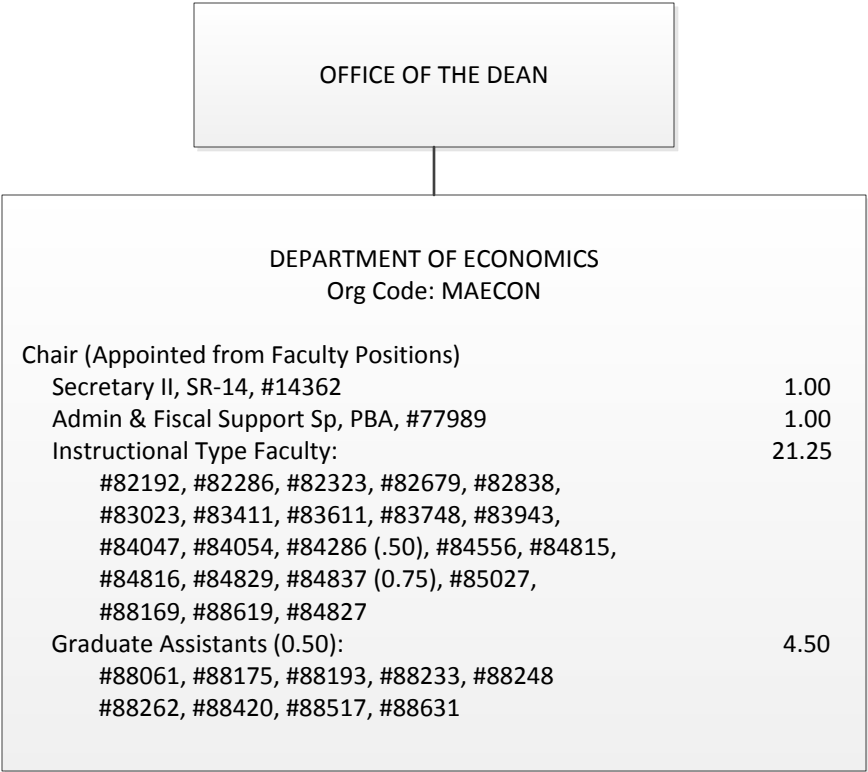
General Fund FTE: 22.50

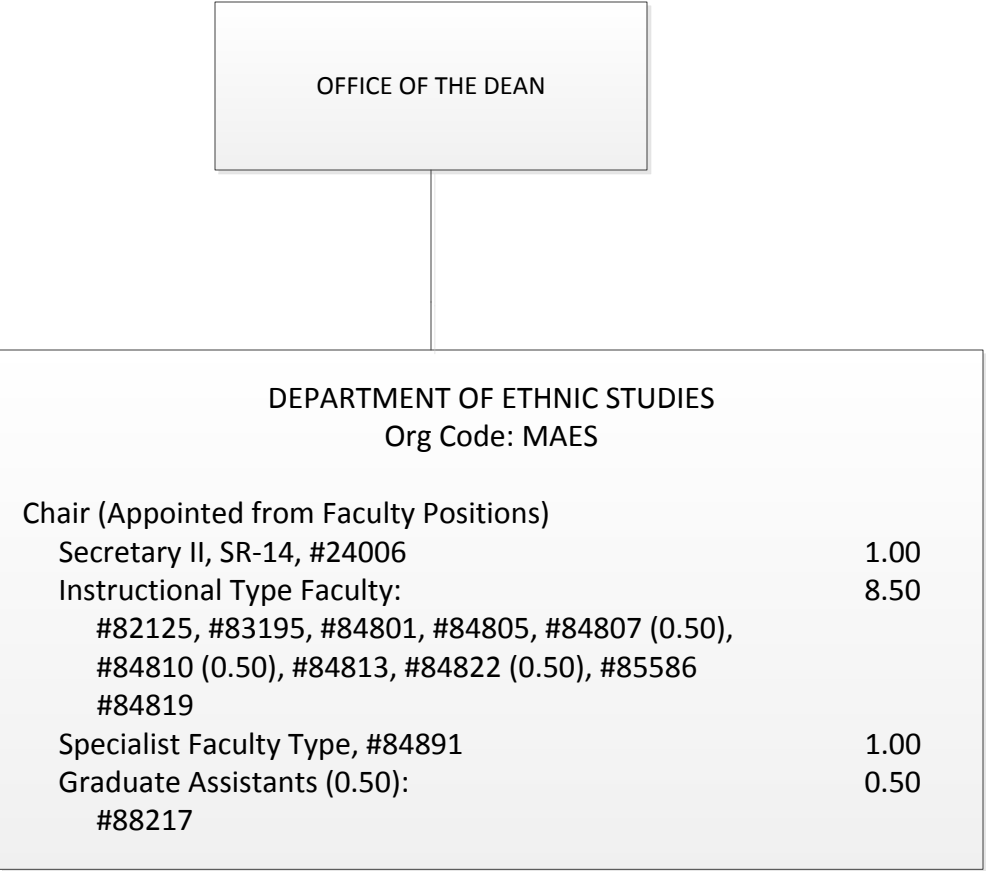


STATE OF HAWAII
UNIVERSITY OF HAWAII
UNIVERSITY OF HAWAII AT MANOA
COLLEGE OF ARTS AND SCIENCES
COLLEGE OF SOCIAL SCIENCES
SCHOOL OF COMMUNICATIONS
ORGANIZATIONAL CHART
CHART IV-B

General Fund FTE: 14.00
Authorized Temps:1.00

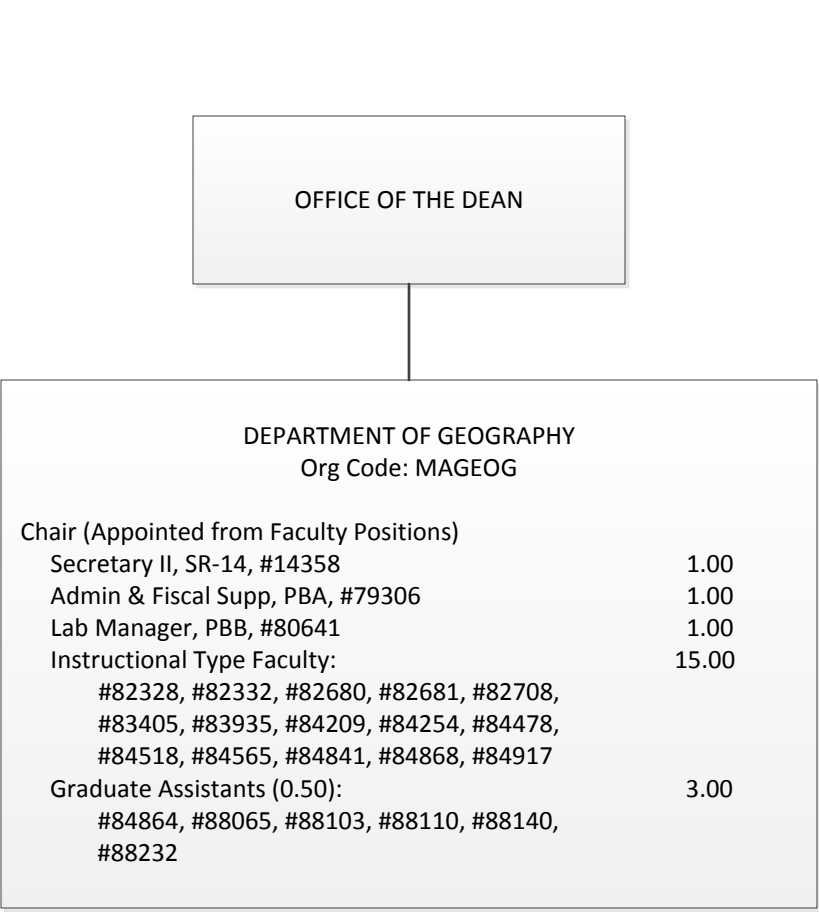
General Fund FTE: 27.75





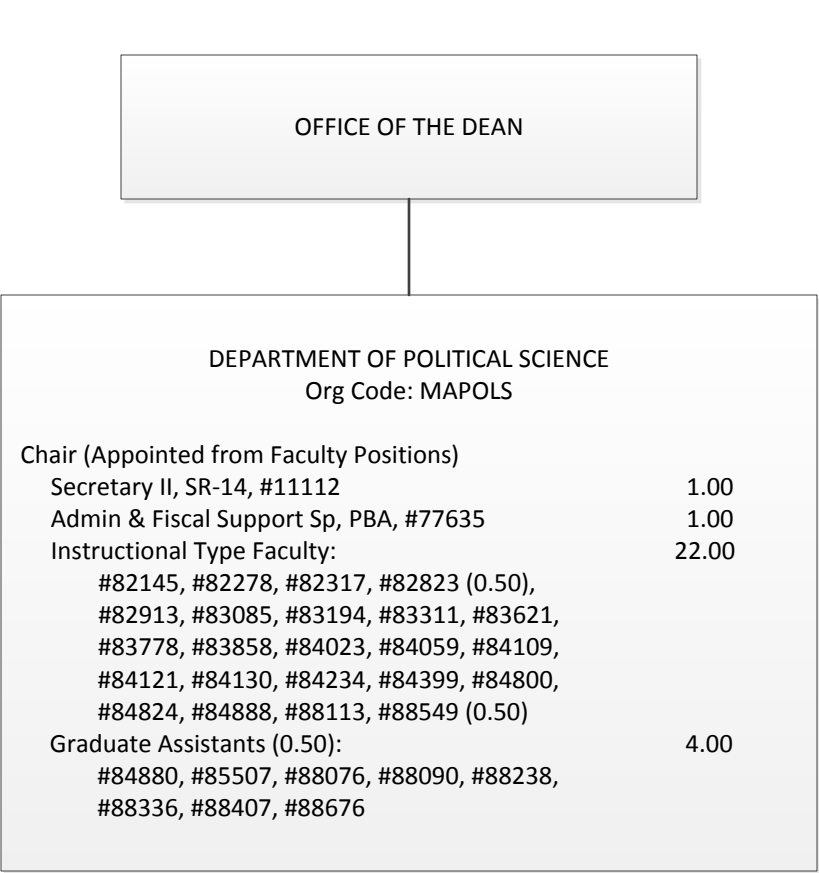
STATE OF HAWAII
UNIVERSITY OF HAWAII
UNIVERSITY OF HAWAII AT MANOA
COLLEGE OF ARTS AND SCIENCES
COLLEGE OF SOCIAL SCIENCES
DEPARTMENT OF ETHNIC STUDIES
ORGANIZATIONAL CHART
CHART IV-D

GENERAL FUND FTE: 11.00



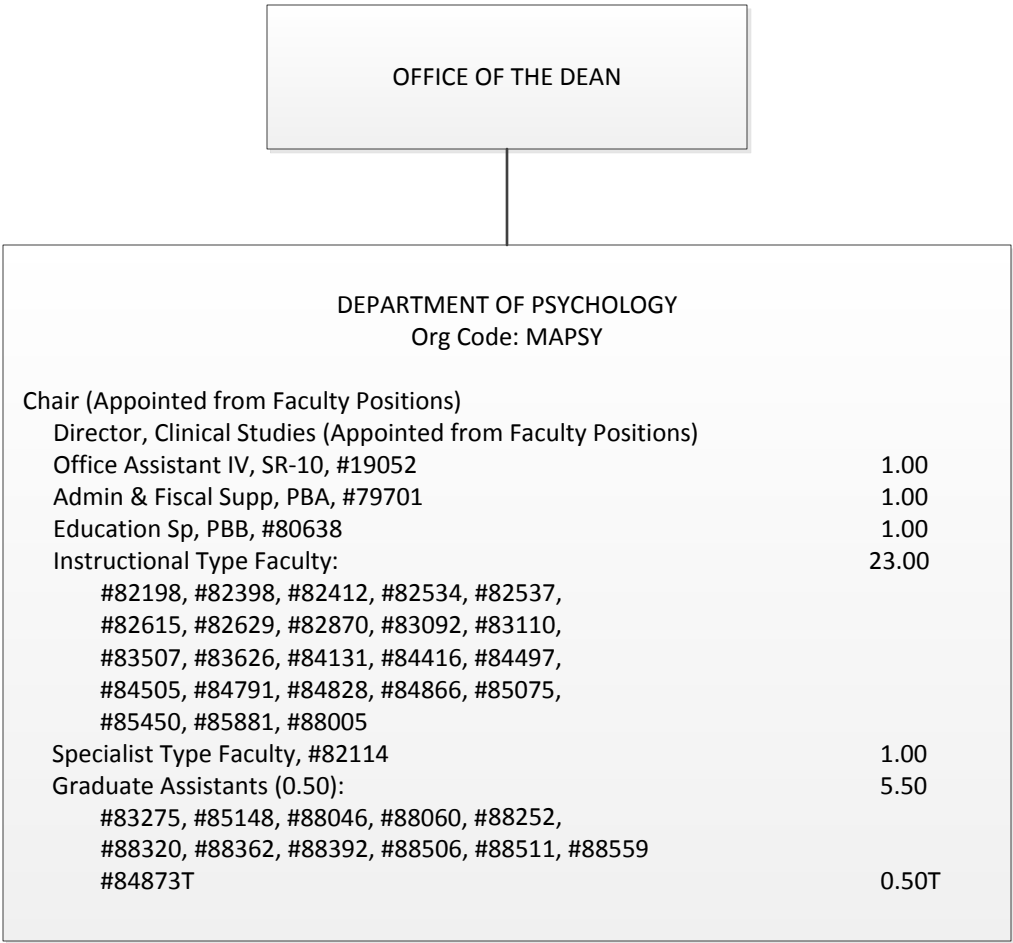
STATE OF HAWAII
UNIVERSITY OF HAWAII
UNIVERSITY OF HAWAII AT MANOA
COLLEGE OF ARTS AND SCIENCES
COLLEGE OF SOCIAL SCIENCES
DEPARTMENT OF GEOGRAPHY
ORGANIZATIONAL CHART
CHART IV-E

GENERAL FUND FTE: 21.00



STATE OF HAWAII
UNIVERSITY OF HAWAII
UNIVERSITY OF HAWAII AT MANOA
COLLEGE OF ARTS AND SCIENCES
COLLEGE OF SOCIAL SCIENCES
DEPARTMENT OF POLITICAL SCIENCE
ORGANIZATIONAL CHART
CHART IV-F

GENERAL FUND FTE: 28.00



STATE OF HAWAII
UNIVERSITY OF HAWAII
UNIVERSITY OF HAWAII AT MANOA
COLLEGE OF ARTS AND SCIENCES
COLLEGE OF SOCIAL SCIENCES
DEPARTMENT OF PSYCHOLOGY
ORGANIZATIONAL CHART
CHART IV-G

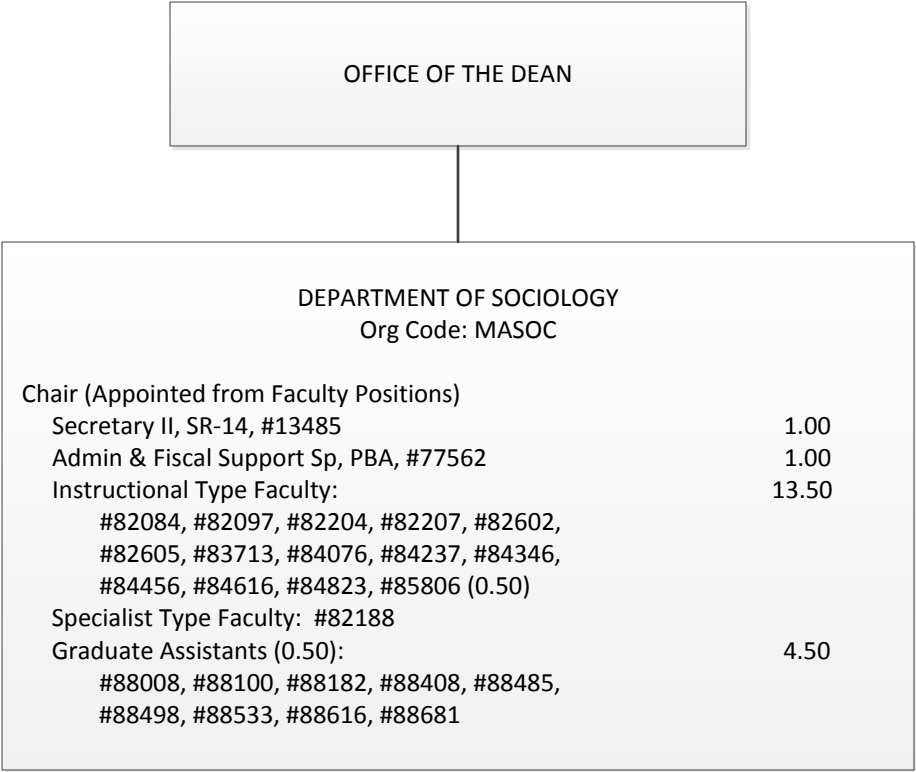
General Fund FTE: 32.50
Authorized Temps: 0.50

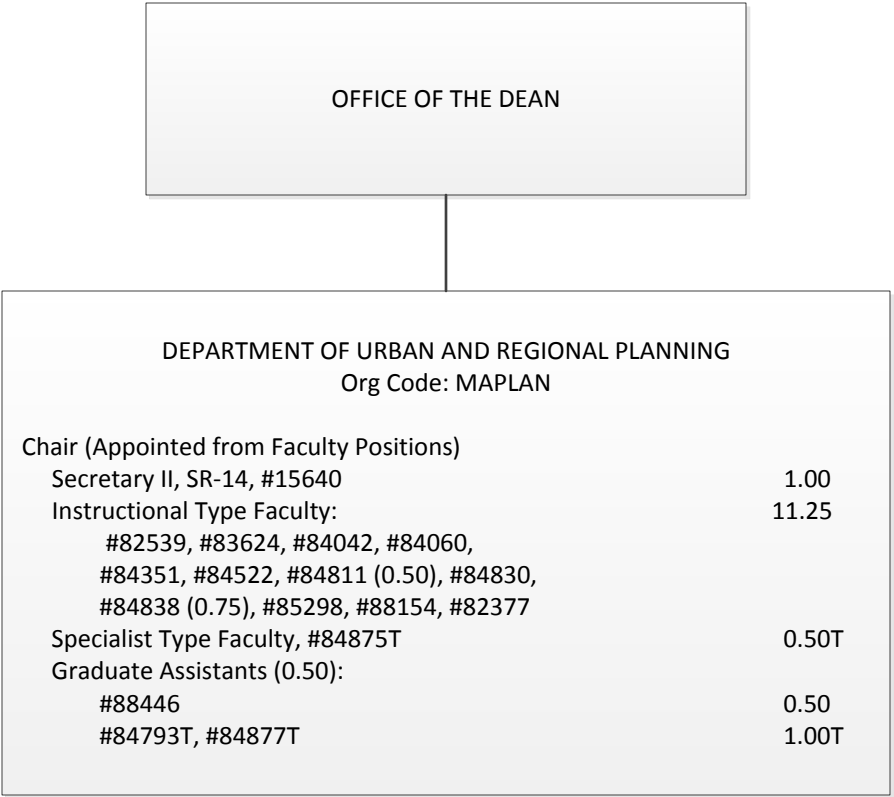
STATE OF HAWAII
UNIVERSITY OF HAWAII
UNIVERSITY OF HAWAII AT MANOA
COLLEGE OF ARTS AND SCIENCES
COLLEGE OF SOCIAL SCIENCES
PUBLIC ADMINISTRATION PROGRAM
ORGANIZATIONAL CHART
CHART IV-H

GENERAL FUND FTE: 8.50



GENERAL FUND FTE: 21.00

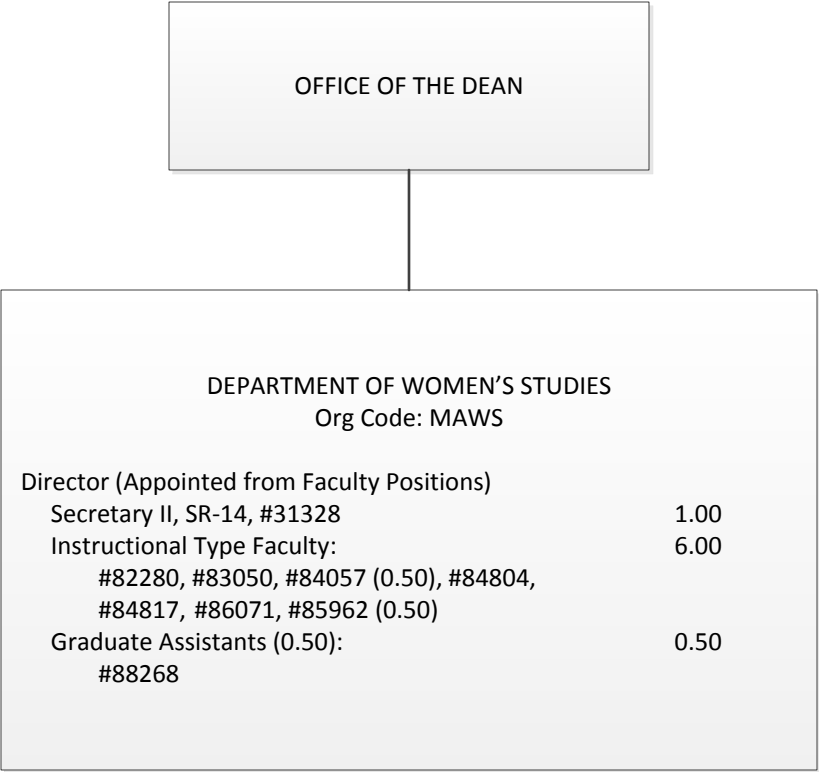


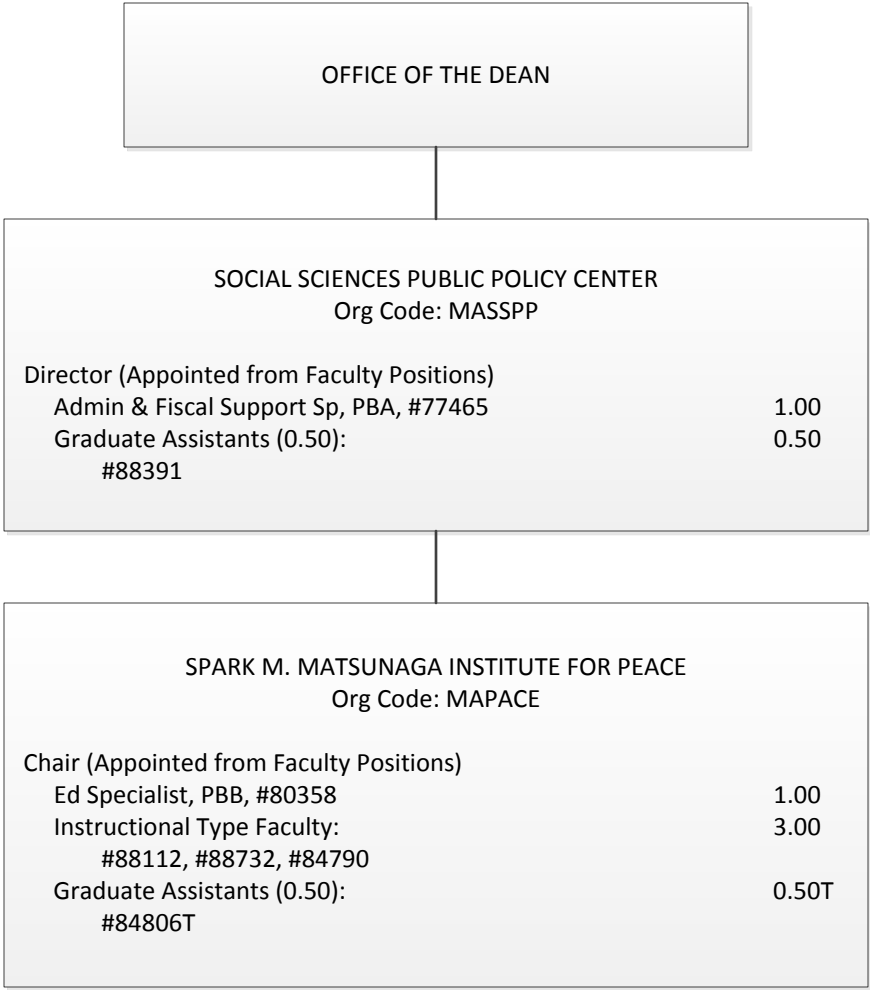


STATE OF HAWAII
UNIVERSITY OF HAWAII
UNIVERSITY OF HAWAII AT MANOA
COLLEGE OF ARTS AND SCIENCES
COLLEGE OF SOCIAL SCIENCES
DEPARTMENT OF URBAN AND REGIONAL PLANNING
ORGANIZATIONAL CHART
CHART IV-J

General Fund FTE: 12.75
Authorized Temps: 1.50

GENERAL FUND FTE: 7.50





STATE OF HAWAII
UNIVERSITY OF HAWAII
UNIVERSITY OF HAWAII AT MANOA
COLLEGE OF ARTS AND SCIENCES
COLLEGE OF SOCIAL SCIENCES
SOCIAL SCIENCES PUBLIC POLICY CENTER
ORGANIZATIONAL CHART
CHART IV-L

General Fund FTE: 5.50
Authorized Temps: 0.50