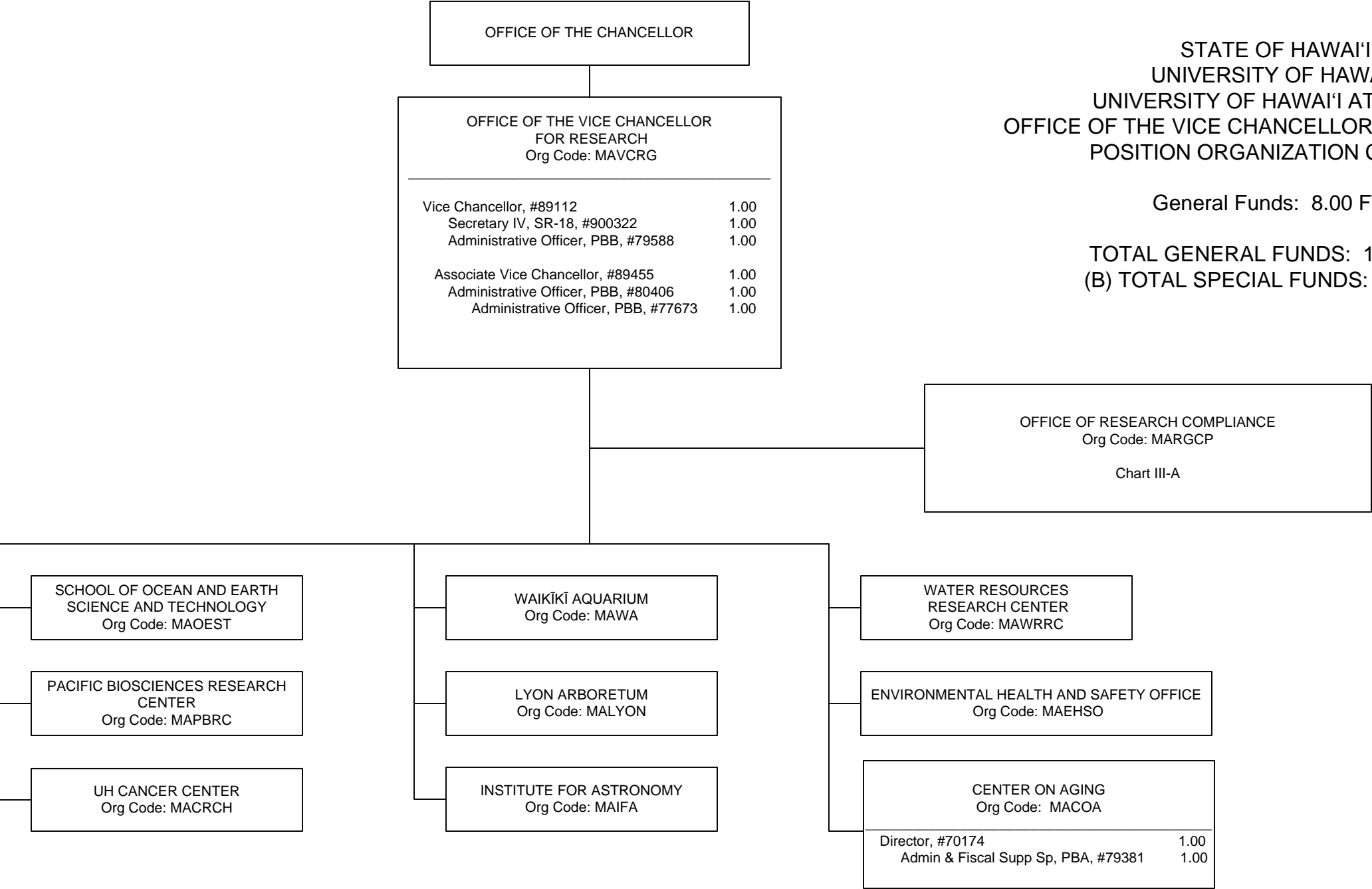


STATE OF HAWAI'I
UNIVERSITY OF HAWAI'I
UNIVERSITY OF HAWAI'I AT MĀNOA
OFFICE OF THE VICE CHANCELLOR FOR RESEARCH
POSITION ORGANIZATION CHART III

General Funds: 8.00 FTE

TOTAL GENERAL FUNDS: 14.00 FTE
(B) TOTAL SPECIAL FUNDS: 5.00 FTE



Footnotes:
+ Academic matters within the School of Ocean and Earth Science and Technology will be administered in coordination with the Vice Chancellor for Academic Affairs

STATE OF HAWAI'I
UNIVERSITY OF HAWAI'I
UNIVERSITY OF HAWAI'I AT MĀNOA
OFFICE OF THE VICE CHANCELLOR FOR RESEARCH
POSITION ORGANIZATION CHART III-A

General Funds: 6.00 FTE
(B) Special Funds: 5.00 FTE

