

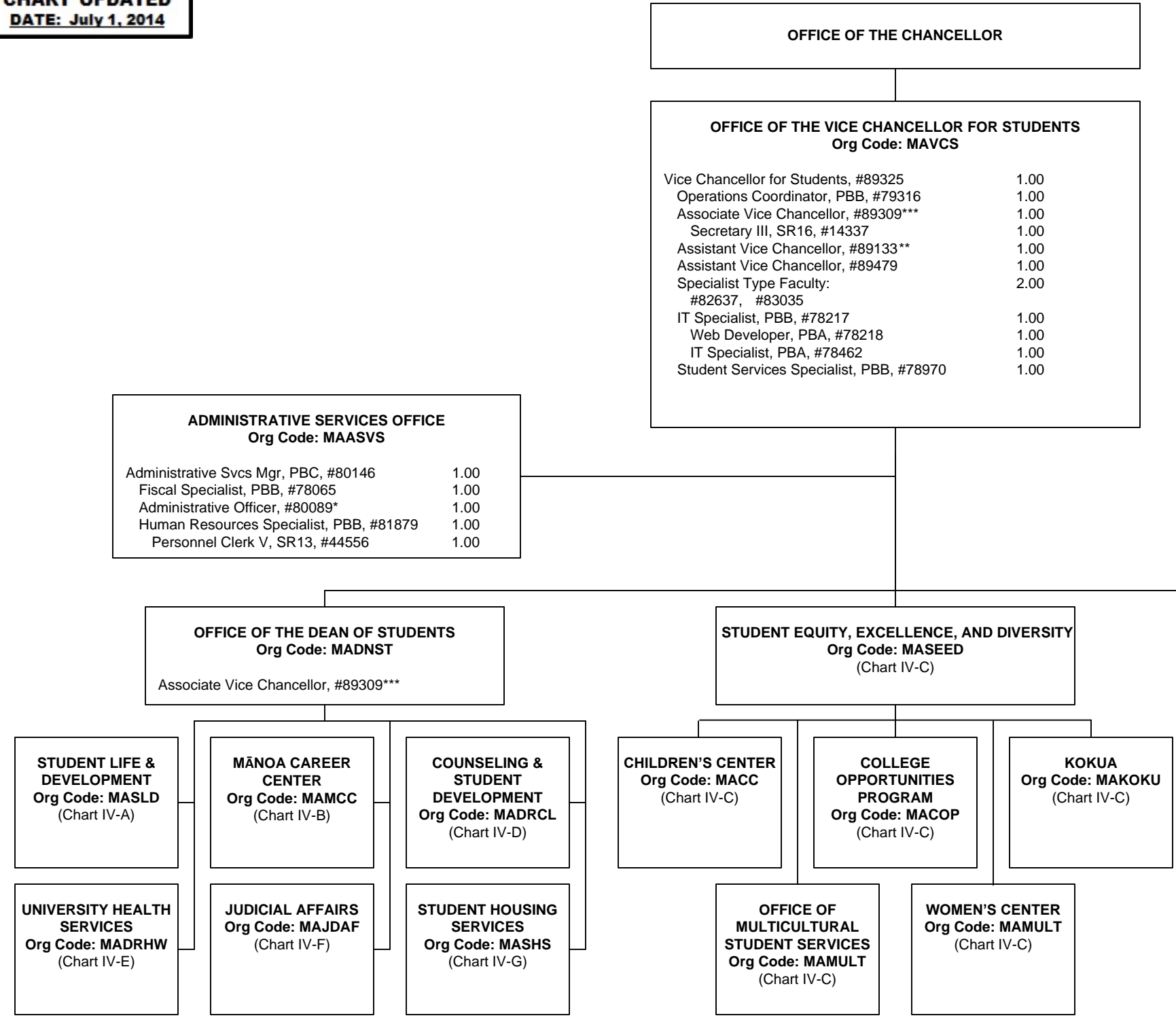
ORGANIZATIONAL CHART
CHART IV

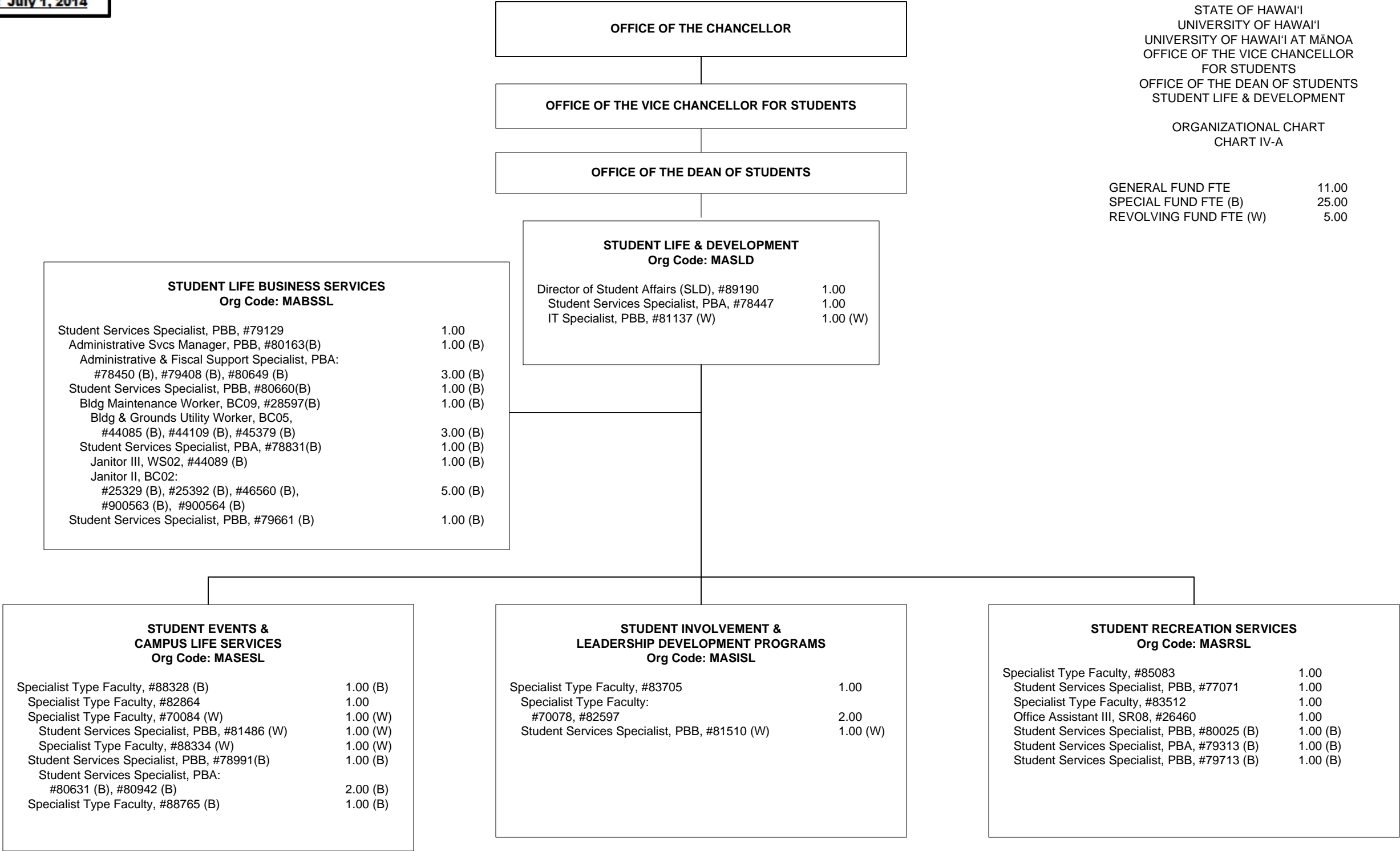
GENERAL FUND FTE 17.00

*New, position number. Redescription pending.
**Also serves as Enrollment Management and
Director
***Also serves as Dean of Students.

GRAND TOTAL BY FUND

GENERAL FUND FTE	192.00
GENERAL FUND FTE (AUTH TEMP)	4.00
SPECIAL FUND (B) FTE	74.00
REVOLVING FUND (W) FTE	19.25





OFFICE OF THE CHANCELLOR

OFFICE OF THE VICE CHANCELLOR FOR STUDENTS

OFFICE OF THE DEAN OF STUDENTS

MĀNOA CAREER CENTER
Org Code: MAMCC

Student Services Specialist, PBD, #806611.00
Secretary II, SR14, #110461.00
IT Specialist, PBA, #786041.00

CAREER SERVICES
Org Code: MACSCD

Specialist Type Faculty:4.00
#70072, #82701, #88125, #88325,
Student Services Specialist, PBB, #814341.00

COOPERATIVE EDUCATION
Org Code: MACECD

Specialist Type Faculty #881171.00
Specialist Type Faculty:
#82642, #826442.00
Office Assistant IV, SR10, #465501.00

STUDENT EMPLOYMENT SERVICES
Org Code: MASECD

Student Services Specialist, PBB, #814811.00
Student Services Specialist, PBA, #786051.00
Student Services Specialist, PBA, #80453T1.00 T

STATE OF HAWAI'I
UNIVERSITY OF HAWAI'I
UNIVERSITY OF HAWAI'I AT MĀNOA
OFFICE OF THE VICE CHANCELLOR
FOR STUDENTS
OFFICE OF THE DEAN OF STUDENTS
MĀNOA CAREER CENTER

ORGANIZATIONAL CHART
CHART IV-B

GENERAL FUND FTE15.00*
GENERAL FUND FTE (AUTH TEMP)1.00

*Abolished position #88326 (1.00 FTE)

OFFICE OF THE CHANCELLOR

OFFICE OF THE VICE CHANCELLOR FOR STUDENTS

STUDENT EQUITY, EXCELLENCE AND DIVERSITY
Org Code: MASEED

Director of Student Affairs (SEED), #89298	1.00
Fiscal Specialist, PBB:	2.00
#78525, #81088	
Specialist Type Faculty:	5.00
#70068, #70069, #70070, #70071, #82594	
Educational Specialist, PBB, #81063	1.00
Program Manager, PBB, #81904	1.00
Student Services Specialist, PBB, #78524	1.00
Office Assistant III, SR08, #43052	1.00

CHILDREN'S CENTER
Org Code: MACC

Child Care Site Director, PBB, #80232	1.00
Administrative Officer, PBA, #80739 (B)	1.00 (B)
Educational Associate, PBB, #80029	1.00
Child Care Cntr Teacher, PBB:	
#80109	1.00
#80234T, #80455T,	2.00 T
Child Care Cntr Teacher, PBA:	
#78917, #80233,	2.00
#80424T,	1.00 T
#80541 (B), #80588 (B), #80611 (B)	3.00 (B)

COLLEGE OPPORTUNITIES PROGRAM
Org Code: MACOP

Specialist Type Faculty, #83548	1.00
Student Services Specialist, PBB, #80606	1.00
Student Services Specialist, PBA, #78538	1.00
Office Assistant IV, SR10, #23086	1.00

STATE OF HAWAI'I
UNIVERSITY OF HAWAI'I
UNIVERSITY OF HAWAI'I AT MĀNOA
OFFICE OF THE VICE CHANCELLOR
FOR STUDENTS
STUDENT EQUITY, EXCELLENCE AND
DIVERSITY

ORGANIZATIONAL CHART
CHART IV-C

GENERAL FUND FTE	37.00*
GENERAL FUND FTE (AUTH TEMP)	3.00
SPECIAL FUND FTE (B)	4.00

*Abolished position #70073 (1.00 FTE)

KOKUA
Org Code: MAKOKU

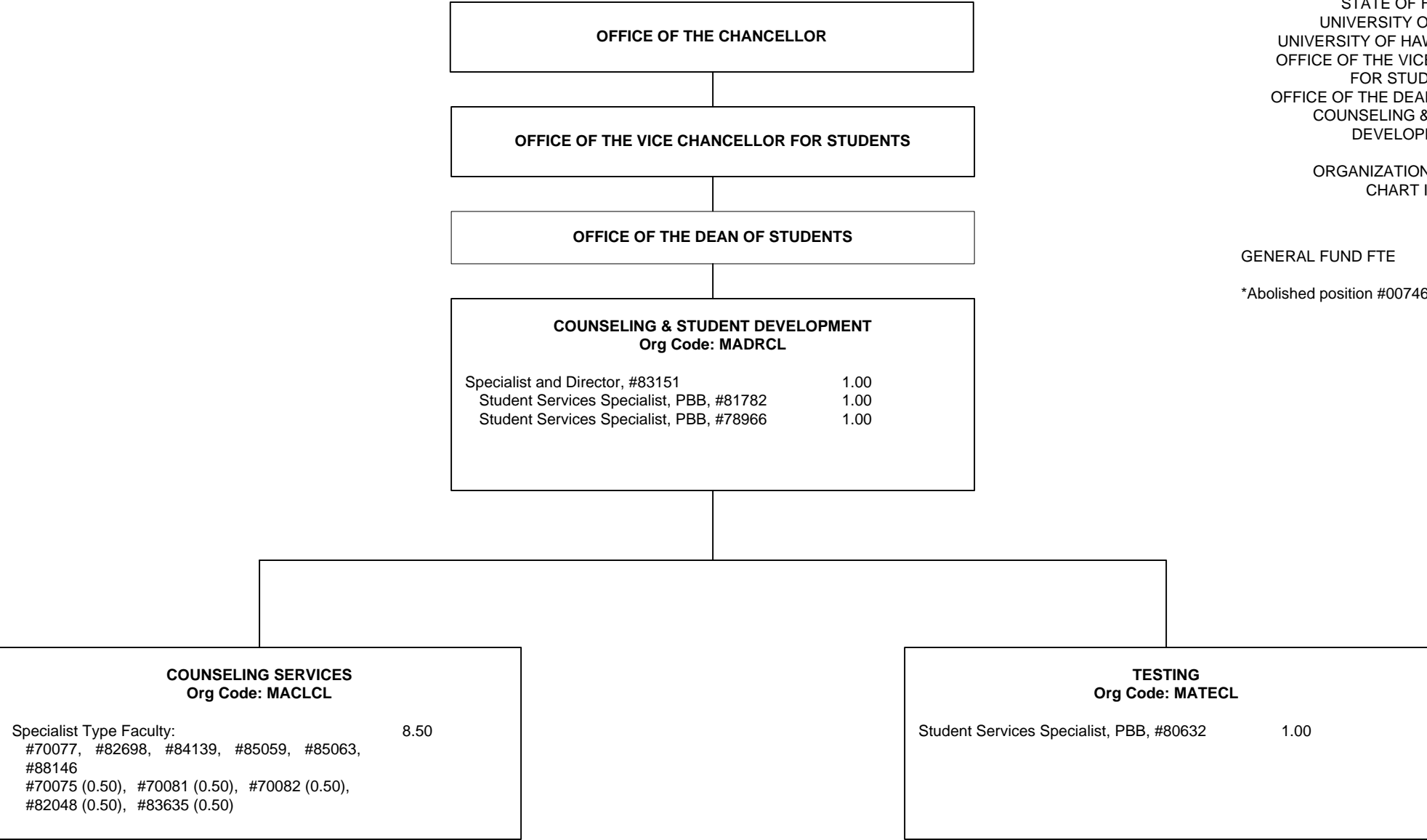
Program Manager, PBC, #80666	1.00
Administrative Officer, PBA, #77032	1.00
Educational Specialist, PBB:	5.00
#78261, #78262, #80608, #80636, #81566	
Educational Specialist, PBA, #81102	1.00

OFFICE OF MULTICULTURAL STUDENT SERVICES
Org Code: MAMULT

Program Manager, PBB, #80517	1.00
Student Services Specialist, PBA:	2.00
#81799, #81801	

WOMEN'S CENTER
Org Code: MAWC

Specialist Type Faculty:	3.00
#70074, #84581, #88333	
Student Services Specialist, PBB, #78526	1.00



STATE OF HAWAI'I
UNIVERSITY OF HAWAI'I
UNIVERSITY OF HAWAI'I AT MĀNOA
OFFICE OF THE VICE CHANCELLOR
FOR STUDENTS
OFFICE OF THE DEAN OF STUDENTS
COUNSELING & STUDENT
DEVELOPMENT

ORGANIZATIONAL CHART
CHART IV-D

GENERAL FUND FTE 13.50*

*Abolished position #00746 (1.00 FTE)

OFFICE OF THE CHANCELLOR

OFFICE OF THE VICE CHANCELLOR FOR STUDENTS

OFFICE OF THE DEAN OF STUDENTS

UNIVERSITY HEALTH SERVICES
Org Code: MADRHW

Specialist and Director, #823411.00

ADMINISTRATIVE SUPPORT
Org Code: MAASHW

Specialist Type Faculty, #835391.00
Secretary II, SR14, #153531.00
Fiscal Specialist, PBB, #796461.00
Admin & Fiscal Support Sp, PBA, #797151.00
Office Assistant IV, SR10, #25410 (W)1.00 (W)
Cashier I, SR10, #112430 (W)1.00 (W)

HEALTH EDUCATION AND PROMOTION
Org Code: MAHPHW

Specialist Type Faculty:2.00
#70079, #88317

MEDICAL STAFF
Org Code: MAMSHW

Advanced Practice Registered Nurse II, SR28, #41706 (W)1.00 (W)
Specialist Type Faculty:2.00 (W)
#83261 (0.50) (W), #83397 (0.50) (W),
#84576 (0.50) (W), #84576A (0.50) (W)

NURSING STAFF
Org Code: MANSHW

Registered Nurse IV, SR22, #10312 (W)1.00 (W)
Registered Nurse III, SR20:4.00 (W)
#13615 (W), #13616 (W), #18091 (W),
#22672 (W)

LABORATORY
Org Code: MALBHW

Medical Technologist, PBB:1.00
#78784 (0.50), #80671 (0.50)

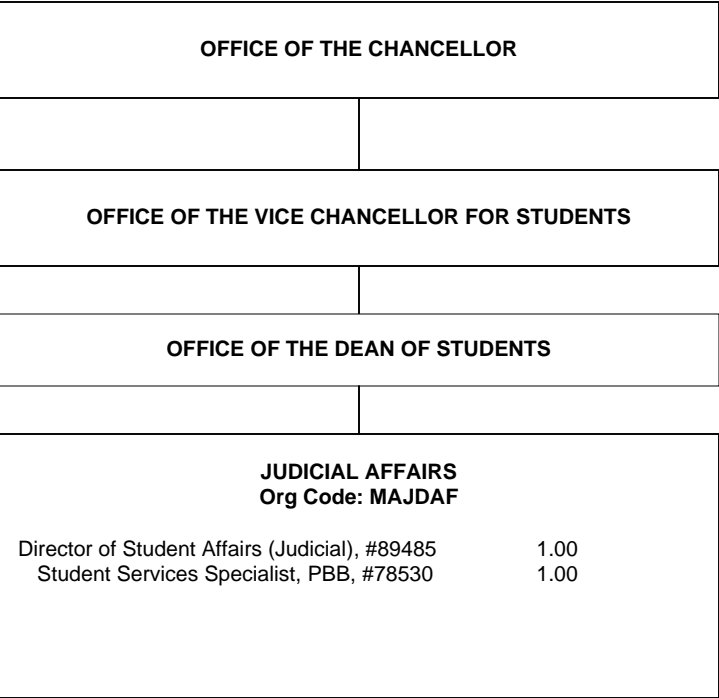
PHARMACY
Org Code: MAPHHW

Pharmacist, PBC:0.50
#78521 (0.50)0.25 (W)
#81877 (0.25) (W)

STATE OF HAWAI'I
UNIVERSITY OF HAWAI'I
UNIVERSITY OF HAWAI'I AT MĀNOA
OFFICE OF THE VICE CHANCELLOR
FOR STUDENTS
OFFICE OF THE DEAN OF STUDENTS
UNIVERSITY HEALTH SERVICES

ORGANIZATIONAL CHART
CHART IV-E

GENERAL FUND FTE8.50
REVOLVING FUND FTE (W)10.25



STATE OF HAWAI'I
UNIVERSITY OF HAWAI'I
UNIVERSITY OF HAWAI'I AT MĀNOA
OFFICE OF THE VICE CHANCELLOR
FOR STUDENTS
OFFICE OF THE DEAN OF STUDENTS
JUDICIAL AFFAIRS

ORGANIZATIONAL CHART
CHART IV-F

GENERAL FUND FTE2.00

OFFICE OF THE CHANCELLOR

OFFICE OF THE VICE CHANCELLOR FOR STUDENTS

OFFICE OF THE DEAN OF STUDENTS

STUDENT HOUSING SERVICES
Org Code: MASHS

Director of Student Housing, #89007 (B)	1.00 (B)
Secretary II, SR14, #00743 (B)	1.00 (B)

STATE OF HAWAI'I
UNIVERSITY OF HAWAI'I
UNIVERSITY OF HAWAI'I AT MĀNOA
OFFICE OF THE VICE CHANCELLOR
FOR STUDENTS
OFFICE OF THE DEAN OF STUDENTS
STUDENT HOUSING SERVICES

ORGANIZATIONAL CHART
CHART IV-G

GENERAL FUND FTE	6.00
SPECIAL FUND FTE (B)	45.00

* Pending establishment
** Position abolished, to be redescribed/
reestablished

¹ Supervised by Environmental Health & Safety

OPERATIONS
Org Code: MAOPSH

Auxiliary & Facilities Services Manager, PBB, #80629 (B)	1.00 (B)
Auxiliary & Facilities Services Officer, PBA: #78141 (B), #79641 (B)*	2.00 (B)
Office Assistant III, SR08, #24249 (B)	1.00 (B)

MAINTENANCE STAFF:

Building Maintenance Supervisor I, F109, #900548 (B)	1.00 (B)
Building Maintenance Worker I, BC09: #031242 (B), #110585 (B), #013578 (B), #031245 (B) #900513, #900514	4.00 (B) 2.00
Plumber I, BC10, #900603 (B)	1.00 (B)
Electrician I, BC10, #900604 (B)	1.00 (B)

GROUNDS STAFF:

Groundskeeper II, WS02, #24251 (B)	1.00 (B)
Groundskeeper I, BC02, #31246 (B)	1.00 (B)

PROJECT & PLANT MANAGEMENT SUPPORT:

Registered Architect, PBB, #77005 (B)	1.00 (B)
Environmental Safety Specialist, PBA, #81680 (B) ¹	1.00 (B)

ADMINISTRATION
Org Code: MAADSH

Administrative Svcs Mgr, PBB, #81612 (B)	1.00 (B)
FISCAL:	
Fiscal Specialist, Senior, PBB, #80193 (B)	1.00 (B)
Adm & Fiscal Supp Sp, PBA, #77029 (B)	1.00 (B)
Cashier I, SR10, #28336 (B)	1.00 (B)
Office Assistant IV, SR10, #18701 (B)	1.00 (B)

ASSIGNMENTS:

Administrative Officer, PBB, #79170 (B)*	1.00 (B)
Student Services Specialist, PBA, #78732	1.00
Student Services Specialist, PBA, #79330 (B)	1.00 (B)
Student Services Specialist, PBA, #79885 (B)	1.00 (B)
Office Assistant III, SR08, #18115 (B)**	1.00 (B)

CONFERENCES:

Student Services Specialist, PBB, #80219 (B)*	1.00 (B)
---	----------

PERSONNEL:

Human Resources Sp, PBB, #81103 (B)	1.00 (B)
Human Resources Sp, PBA, #78729	1.00

INFORMATION TECHNOLOGY:

IT Specialist, PBB: #81361 (B), #78311 (B)	2.00 (B)
---	----------

RESIDENTIAL LIFE
Org Code: MARLSH

Residence Life Mgr, PBB, #80630 (B)	1.00 (B)
Clerk Stenographer II, SR09, #24250 (B)**	1.00 (B)
Office Assistant III, SR08: #28545 (B), #23582 (B)	2.00 (B)

TRAINING & LEADERSHIP:

Residence Life Specialist, PBB, #81611 (B)	1.00 (B)
Residence Life Specialist, PBA, #80598 (B)	1.00 (B)

FAMILY RELATIONS & OFF-CAMPUS HOUSING:

RESIDENTIAL AREAS:

Residence Life Specialist, PBB: #80594 (B), #80597 (B)	2.00 (B)
Residence Life Specialist, PBA, #80924 (B)	1.00 (B)

HALL STAFF:

Residence Life Specialist, PBA: #78728 (B), #78959 (B), #78960 (B), #78961 (B), #78962 (B), #80595 (B) #78730, #78731	6.00 (B) 2.00
--	------------------

OFFICE OF THE CHANCELLOR

OFFICE OF THE VICE CHANCELLOR FOR STUDENTS

ENROLLMENT MANAGEMENT
Org Code: MAEM

Assistant Vice Chancellor, #89133**
Administrative Officer, PBA, #77488 1.00
Administrative Officer, PBB, #78674 1.00
Account Clerk III, SR-11*
Admissions Specialist, PBB, #80096 1.00

INFORMATION AND COMPUTER SERVICES
Org Code: MAITEM

IT Manager, PBB, #80018 1.00
IT Specialist, PBB:
#78228, #80017, #81134 3.00

OFFICE OF ADMISSIONS
Org Code: MAOAEM

Admissions Manager, PBC, #81154 1.00
Secretary II, SR14, #14866 1.00
Clerk Supervisor III, SR14, #00748 1.00
Office Assistant IV, SR10:
#00772, #12842, #13495, #13496, #18009, #26538,
#900015 7.00
Office Assistant III, SR8, #900016 1.00
Admissions Specialist, PBB:
#78658, #80626, #81071, #81414, #81734 5.00
Admissions Specialist, PBB, #80625 1.00
Office Assistant IV, SR10, #11496 1.00
Admissions Specialist, PBB, #80530 1.00
Admissions Specialist, PBB, #78660 1.00
Admissions Specialist, PBA:
#77518, #77519, #77520, #77521, #77885, #78659 6.00
Admissions Specialist, PBA, #78192 1.00
Admissions Specialist, PBB, #78406 1.00
Admissions Specialist, PBA, #79845 1.00
Office Assistant IV, SR10:
#15501, #40004, #40005, #900159 4.00

Admissions Manager, PBC, #80463 1.00
Admissions Specialist, PBB:
#78702, #78703, #78716, #78826, 4.00
Admissions Specialist, PBA:
#78825, #78105 2.00
Admin & Fiscal Support Sp, PBA, #78827 1.00

OFFICE OF THE REGISTRAR
Org Code: MARGEM

Registrar, PBC, #81614 1.00

Registrar, Assistant, PBB, #80658 1.00
Registrar, Assistant, PBA, #79064 (W) 1.00 (W)
Student Services Specialist, PBA:
#78405, #78657, 2.00

Registrar, Assistant, PBA, #78828 1.00
Office Assistant IV, SR10:
#00750, #14864, #15502, #21430, #40006 5.00
#14865(W) 1.00 (W)
Office Assistant III, SR8:
#13494 (W), #26539 (W) 2.00 (W)

Scheduler, SR20, #05837 1.00
Office Assistant, IV, SR10, #13959 1.00

STATE OF HAWAII
UNIVERSITY OF HAWAII
UNIVERSITY OF HAWAII AT MĀNOA
OFFICE OF THE VICE CHANCELLOR
FOR STUDENTS
ENROLLMENT MANAGEMENT

ORGANIZATIONAL CHART
CHART IV-H

GENERAL FUND FTE 82.00***
REVOLVING FUND FTE (W) 4.00

***Abolished position numbers 15265, 17600,
and 22321
(General Funds 3.00)

FINANCIAL AID SERVICES
Org Code: MAFAEM

Financial Aid Manager, PBC, #77250 1.00
Secretary II, SR14, #05737 1.00

Financial Aid Specialist, PBB, #81913 1.00

Financial Aid Specialist, PBB:
#77044, #78226, #78227, #80717, #80922
#81151, #81607 7.00

Financial Aid Specialist, PBA:
#78224, #78225, #78245, #78760, #78761,
#78951, #81606, #81608, #81609 9.00

* New position approved in 2/17/05 reorg; position number to be determined.
** Assistant Vice Chancellor position #89133 position count reflected on chart
IV.