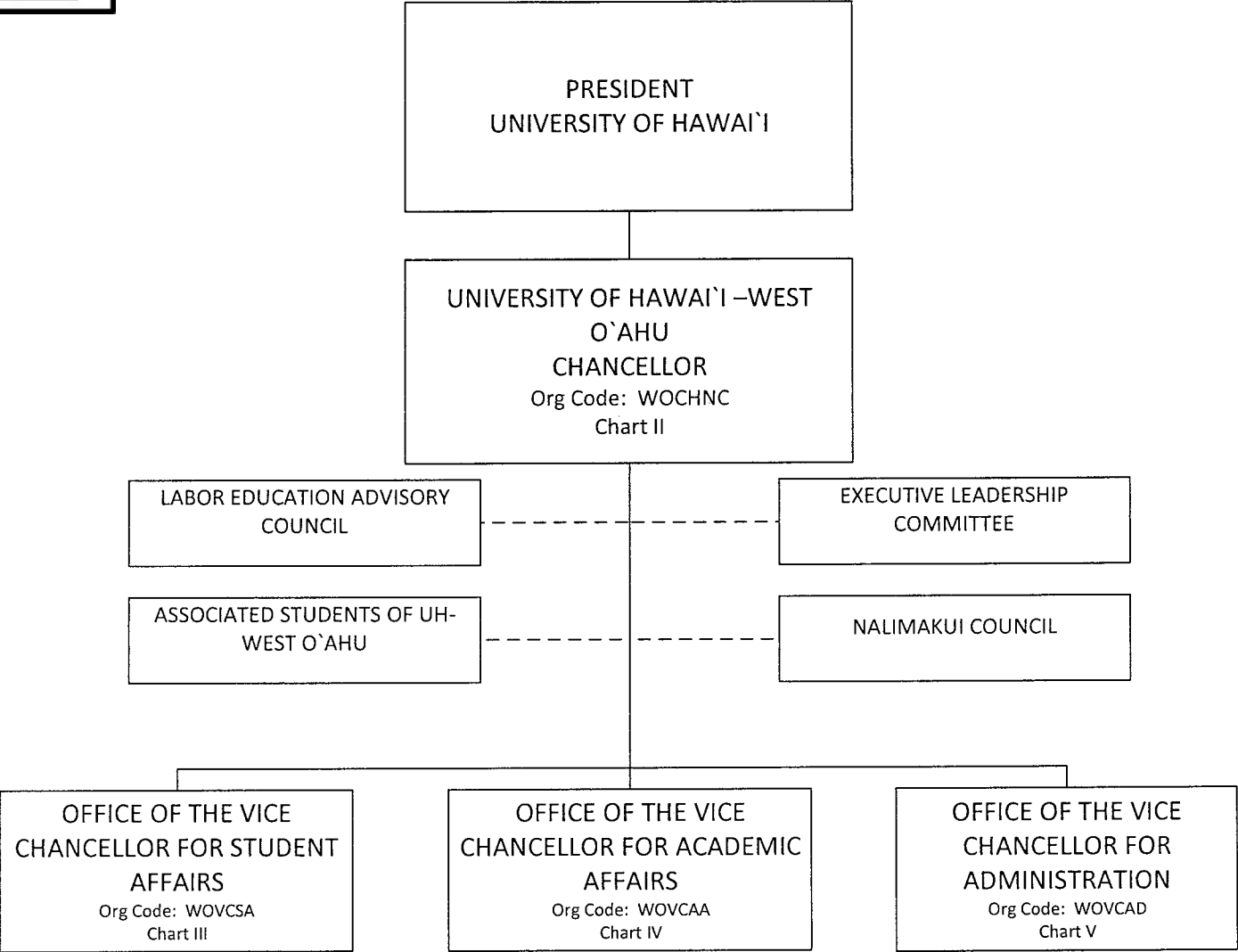
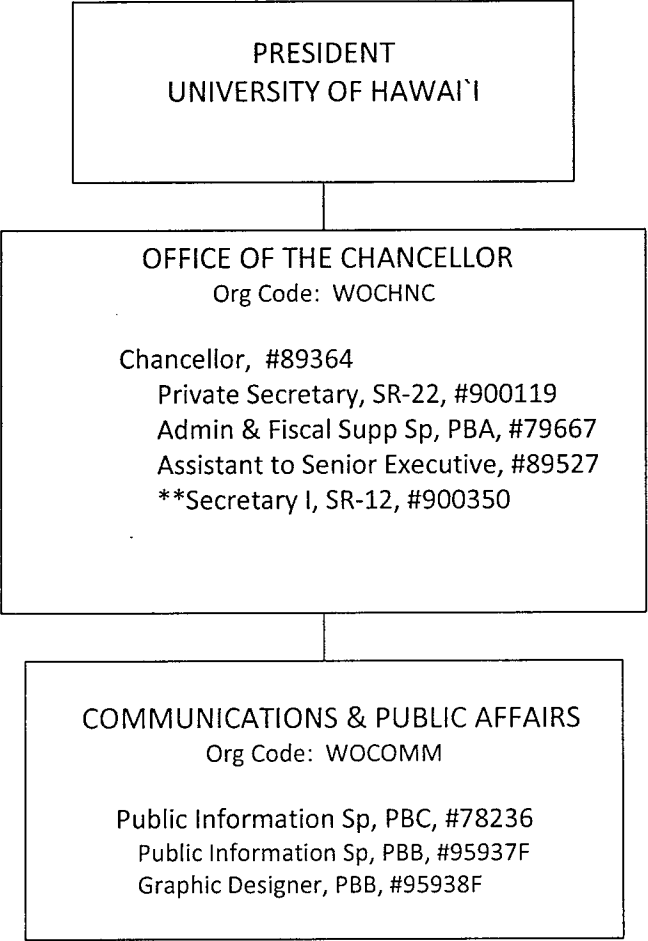


STATE OF HAWAI'I  
UNIVERSITY OF HAWAI'I  
UNIVERSITY OF HAWAI'I – WEST O`AHU  
  
POSITION ORGANIZATION CHART  
CHART I



----- Dotted lines denotes advisory role



STATE OF HAWAI'I  
UNIVERSITY OF HAWAI'I  
UNIVERSITY OF HAWAI'I – WEST O`AHU  
OFFICE OF THE CHANCELLOR

POSITION ORGANIZATION CHART  
CHART II

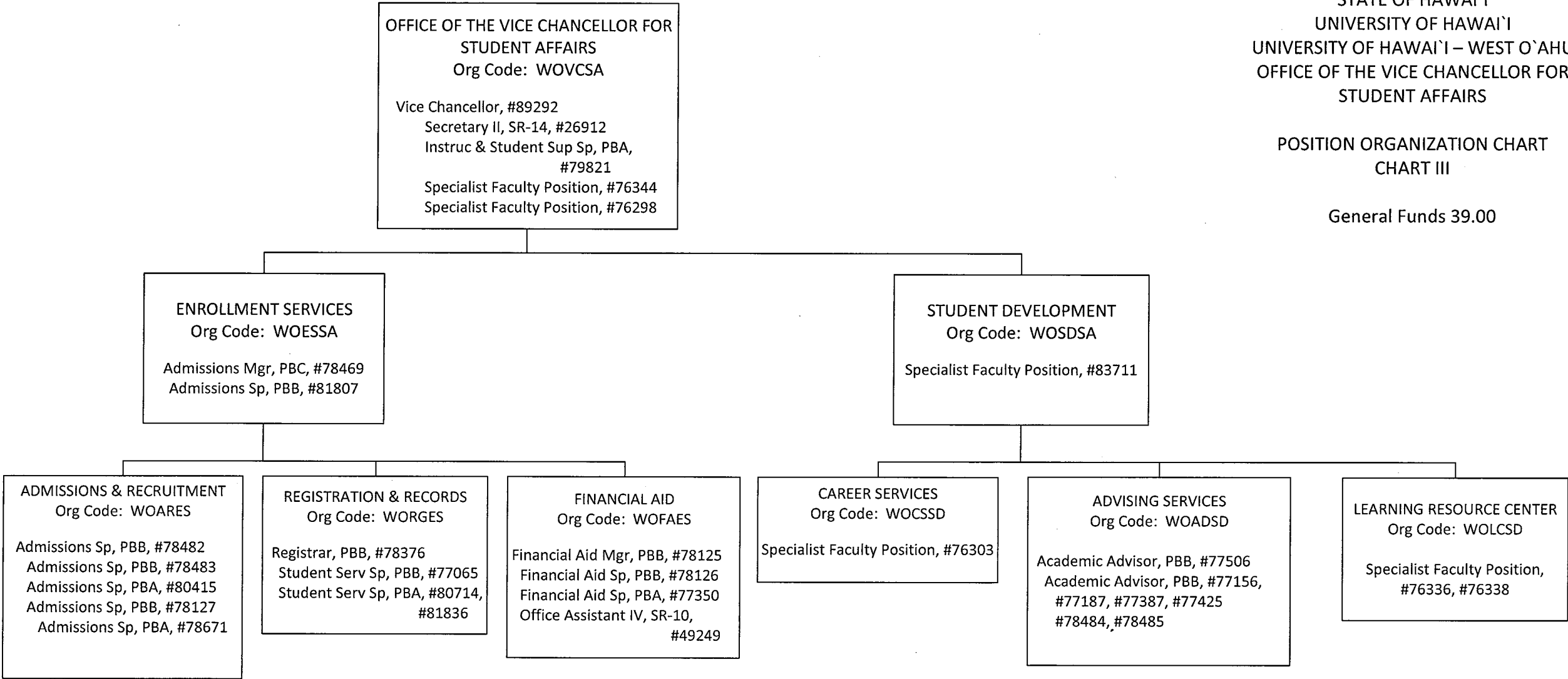
General Funds 7.00  
\*\*General Funds 1.00 (BT)

\*\*Budgeted temporary position

STATE OF HAWAI'I  
UNIVERSITY OF HAWAI'I  
UNIVERSITY OF HAWAI'I – WEST O'AHU  
OFFICE OF THE VICE CHANCELLOR FOR  
STUDENT AFFAIRS

POSITION ORGANIZATION CHART  
CHART III

General Funds 39.00

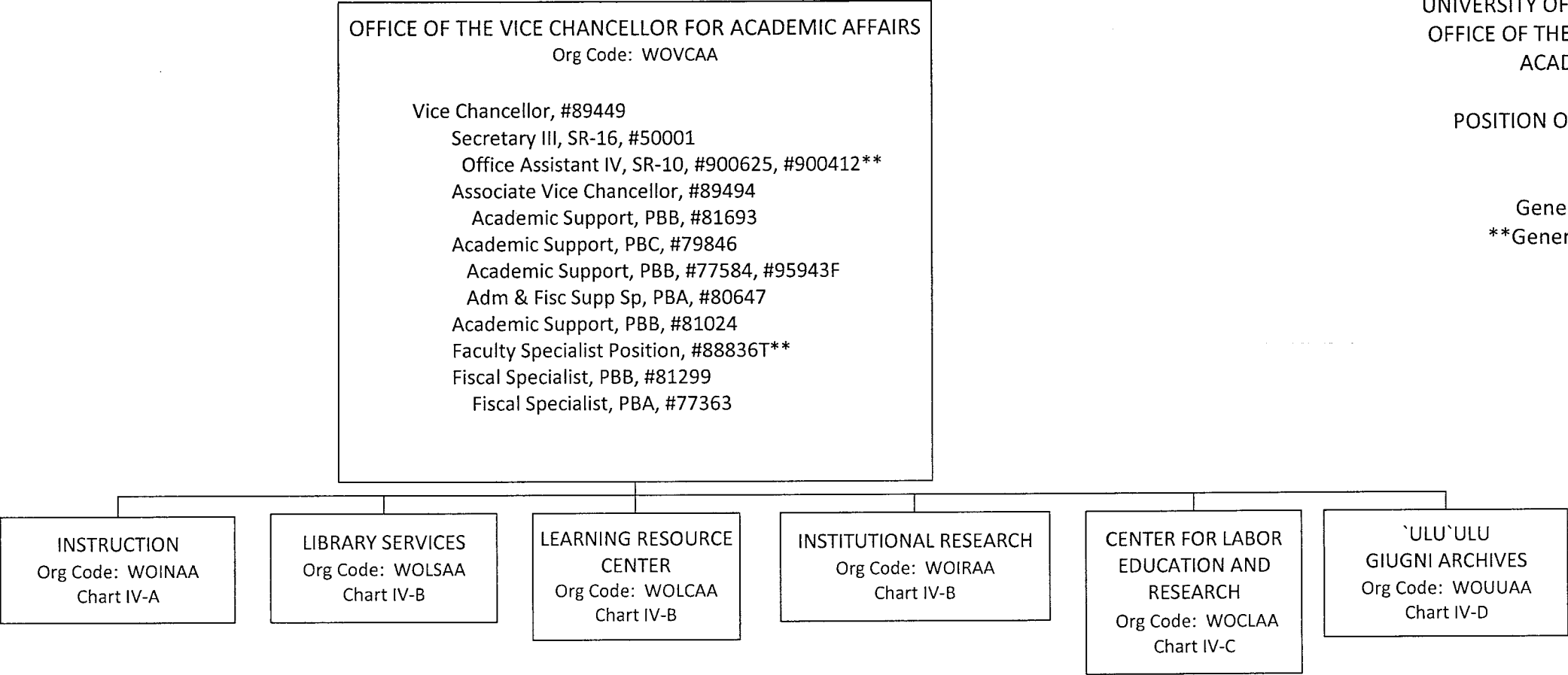


New positions pending establishment: 95816F, 95817F, 95818F, 95819F, 95820F, 95823F, 95932F, 95934F,

STATE OF HAWAIʻI  
UNIVERSITY OF HAWAIʻI  
UNIVERSITY OF HAWAIʻI – WEST OʻAHU  
OFFICE OF THE VICE CHANCELLOR FOR  
ACADEMIC AFFAIRS

POSITION ORGANIZATION CHART  
CHART IV

General Funds 15.00  
\*\*General Funds 2.00 (BT)

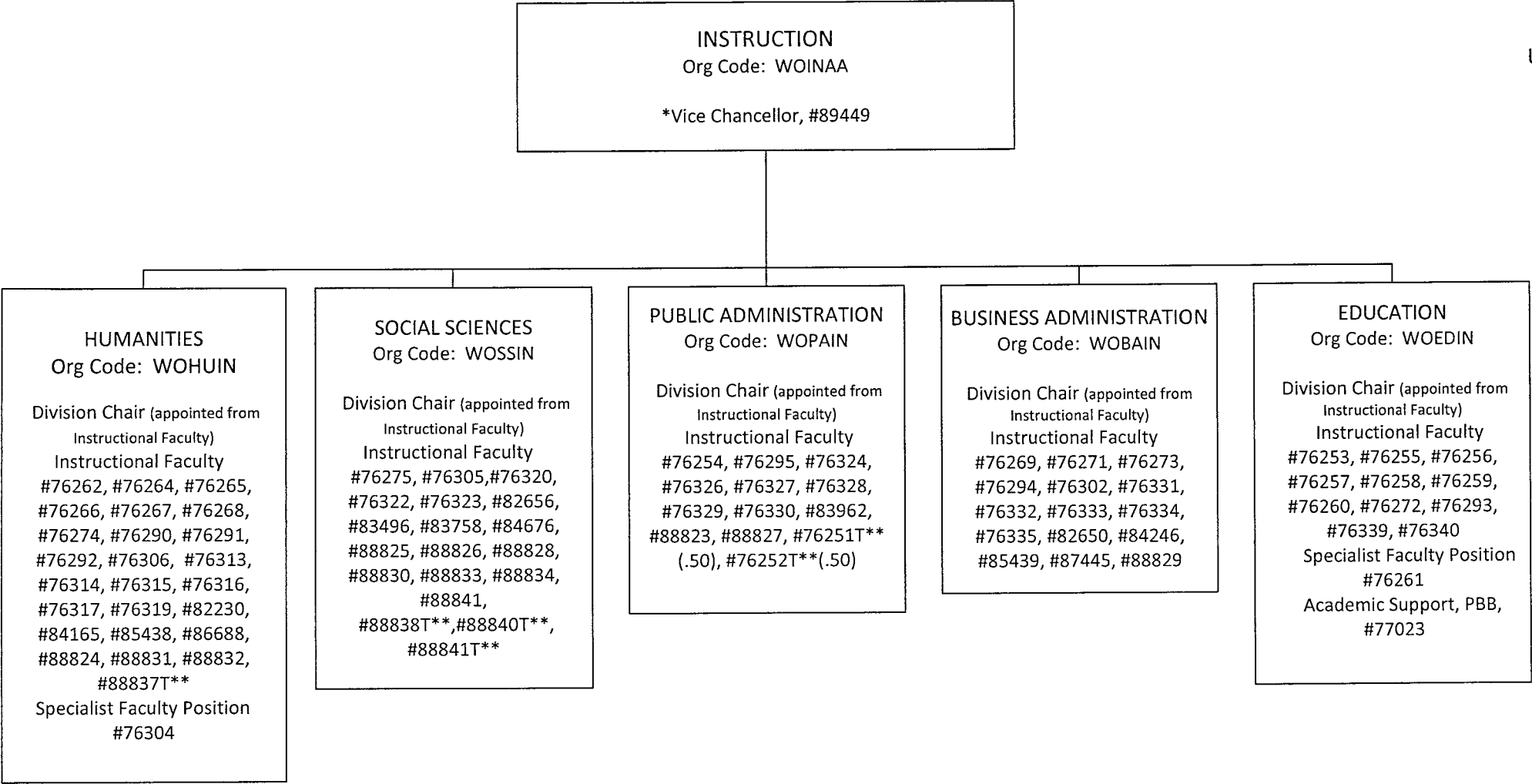


\*\*Budgeted temporary position  
Manoa transfer position Secretary II, #21445 (1.00 FTE) pending redescription, not listed on chart  
Positions pending establishment #95970F, #95974F

STATE OF HAWAI'I  
UNIVERSITY OF HAWAI'I  
UNIVERSITY OF HAWAI'I – WEST O`AHU  
OFFICE OF THE VICE CHANCELLOR FOR  
ACADEMIC AFFAIRS  
INSTRUCTION

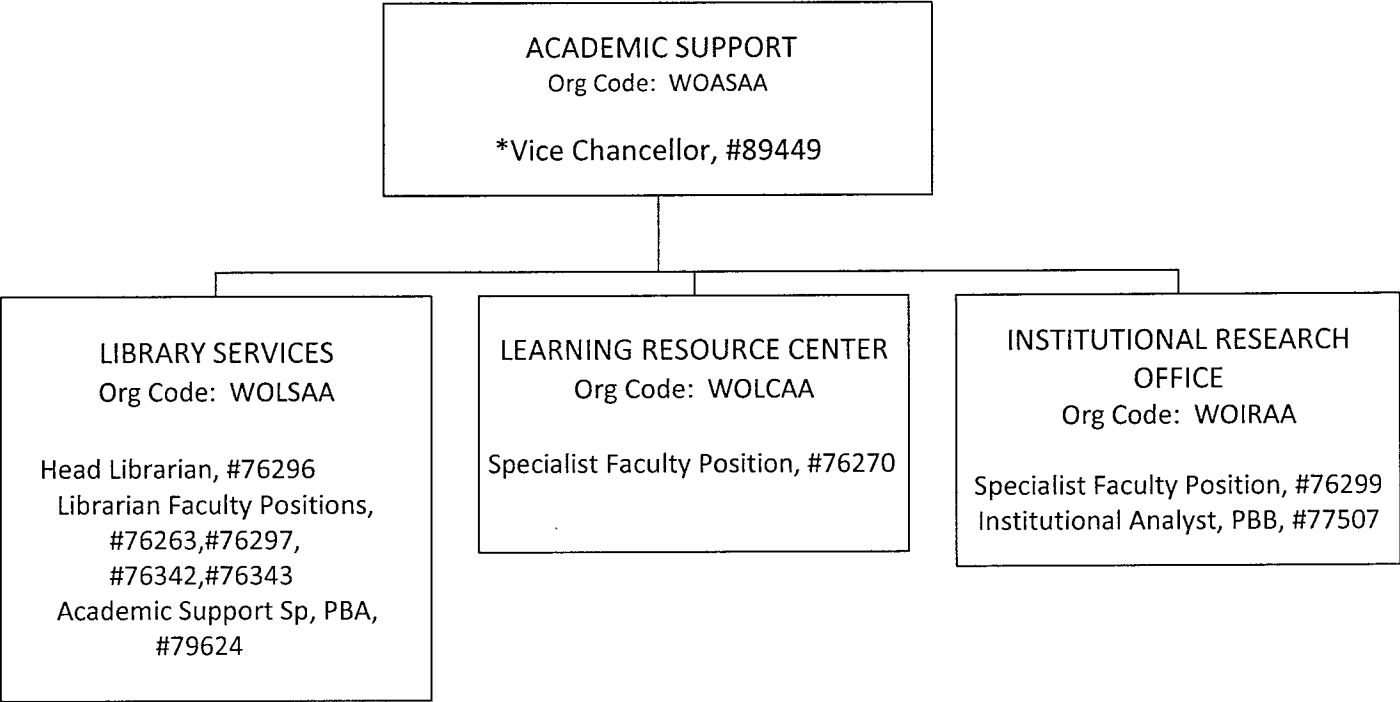
POSITION ORGANIZATION CHART  
CHART IV-A

General Funds 82.00  
\*\*General Funds 5.00 (BT)



\*Position count not included on this page  
Positions pending establishment #95952F, 95967F

\*\*Budgeted temporary positions



STATE OF HAWAI'I  
UNIVERSITY OF HAWAI'I  
UNIVERSITY OF HAWAI'I – WEST O'AHU  
OFFICE OF THE VICE CHANCELLOR FOR  
ACADEMIC AFFAIRS  
ACADEMIC SUPPORT

POSITION ORGANIZATION CHART  
CHART IV-B

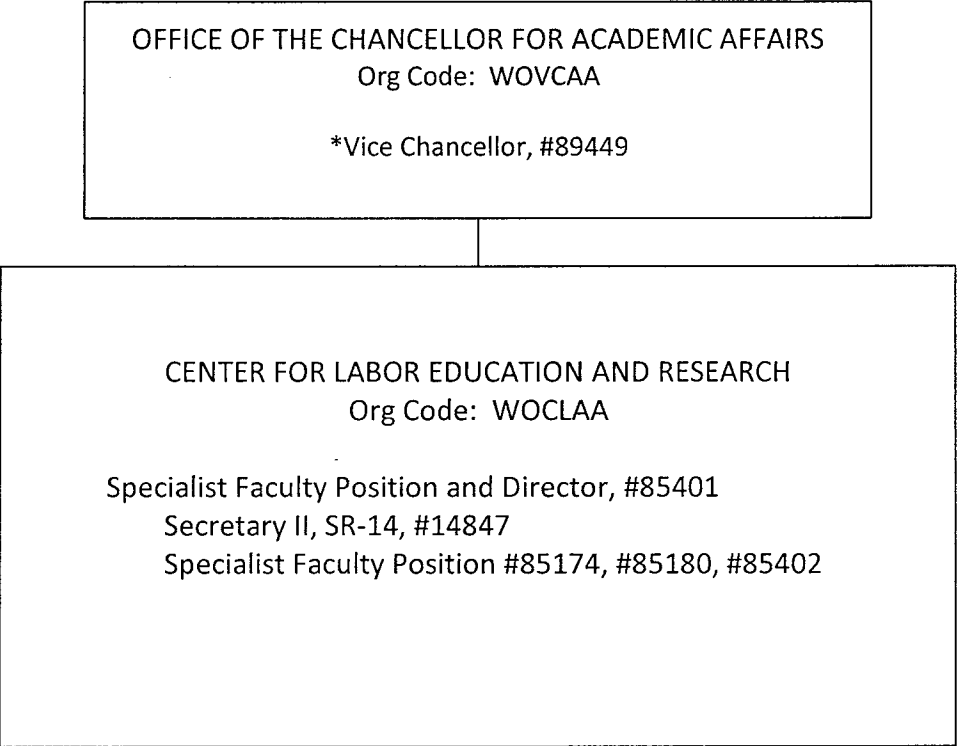
General Funds 9.00

\*Position count not included on this page

STATE OF HAWAI'I  
UNIVERSITY OF HAWAI'I  
UNIVERSITY OF HAWAI'I – WEST O`AHU  
OFFICE OF THE VICE CHANCELLOR FOR  
ACADEMIC AFFAIRS  
CENTER FOR LABOR EDUCATION AND  
RESEARCH

POSITION ORGANIZATION CHART  
CHART IV-C

General Funds 5.00



\*Position count not included on this page

OFFICE OF THE VICE CHANCELLOR FOR ACADEMIC AFFAIRS  
Org Code: WOVCAA  
\*Vice Chancellor  
#89449

'ULU'ULU  
GIUGNI ARCHIVES  
Org Code: WOUUAA  
  
\*Specialist Type Faculty, #88934T  
Educational Spec, PBB, #77377  
Educational Spec, PBB, #77644  
Educational Spec, PBA, #77651  
Educational Spec, PBA, #77678  
Media Spec, PBA, #77600

STATE OF HAWAI'I  
UNIVERSITY OF HAWAI'I  
UNIVERSITY OF HAWAI'I – WEST O`AHU  
OFFICE OF THE VICE CHANCELLOR FOR  
ACADEMIC AFFAIRS  
'ULU'ULU  
GIUGNI ARCHIVES

POSITION ORGANIZATION CHART  
CHART IV-D

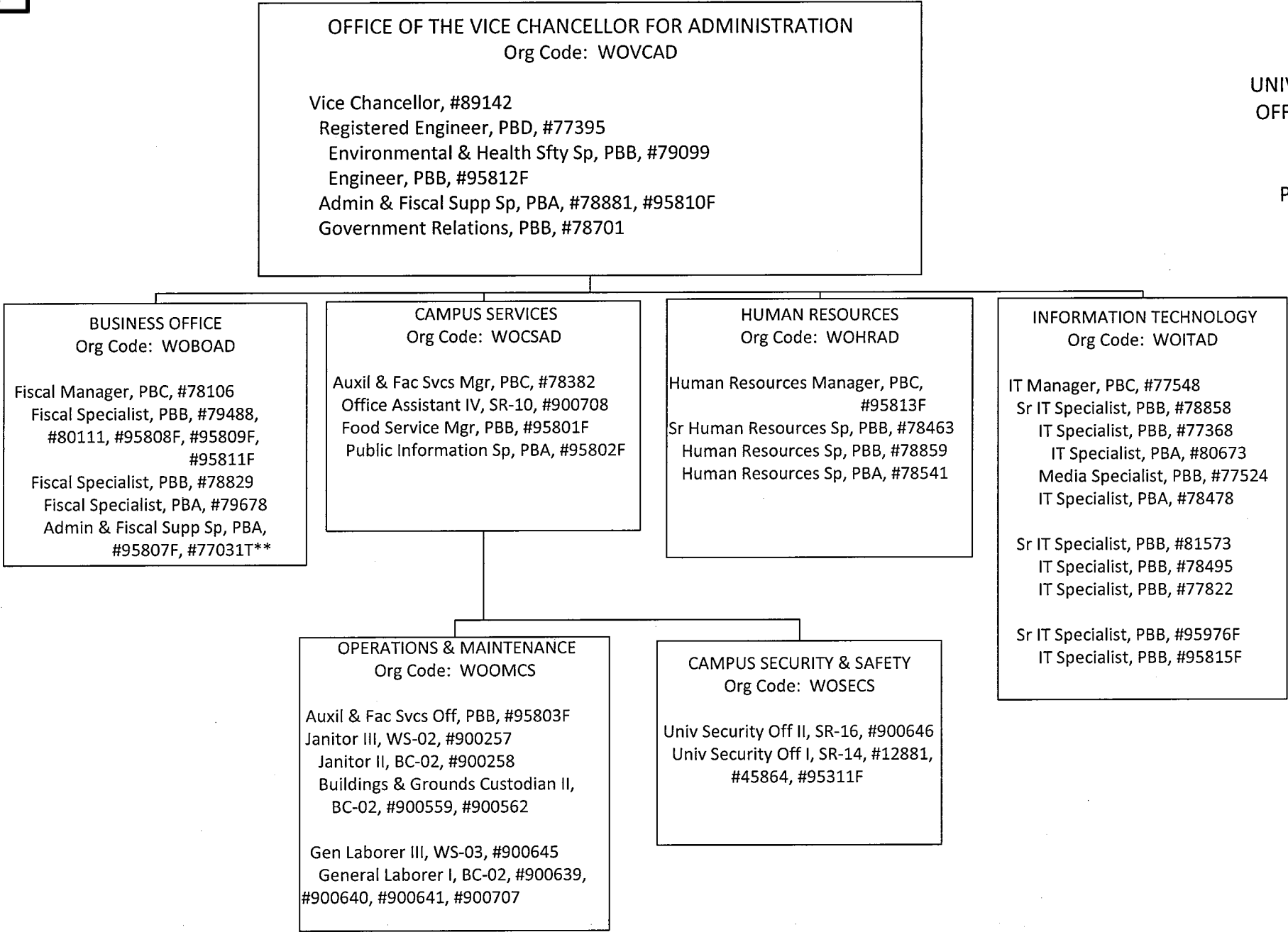
General Funds 5.00

\*Position count not included on this page



POSITION ORGANIZATION CHART  
CHART V

General Funds 53.00  
\*\*General Funds 1.00 (BT)



Positions pending establishment #95303F, #95304F, #95305F, #95310F  
\*\*Budgeted temporary position