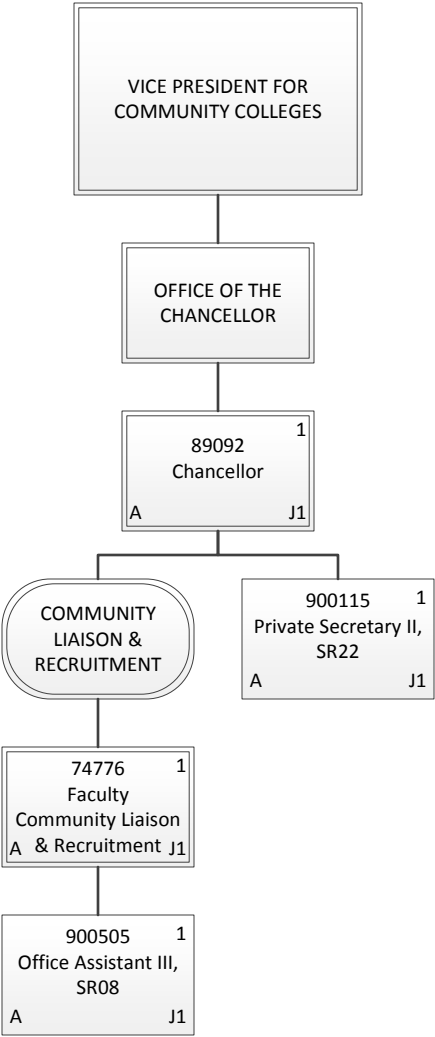


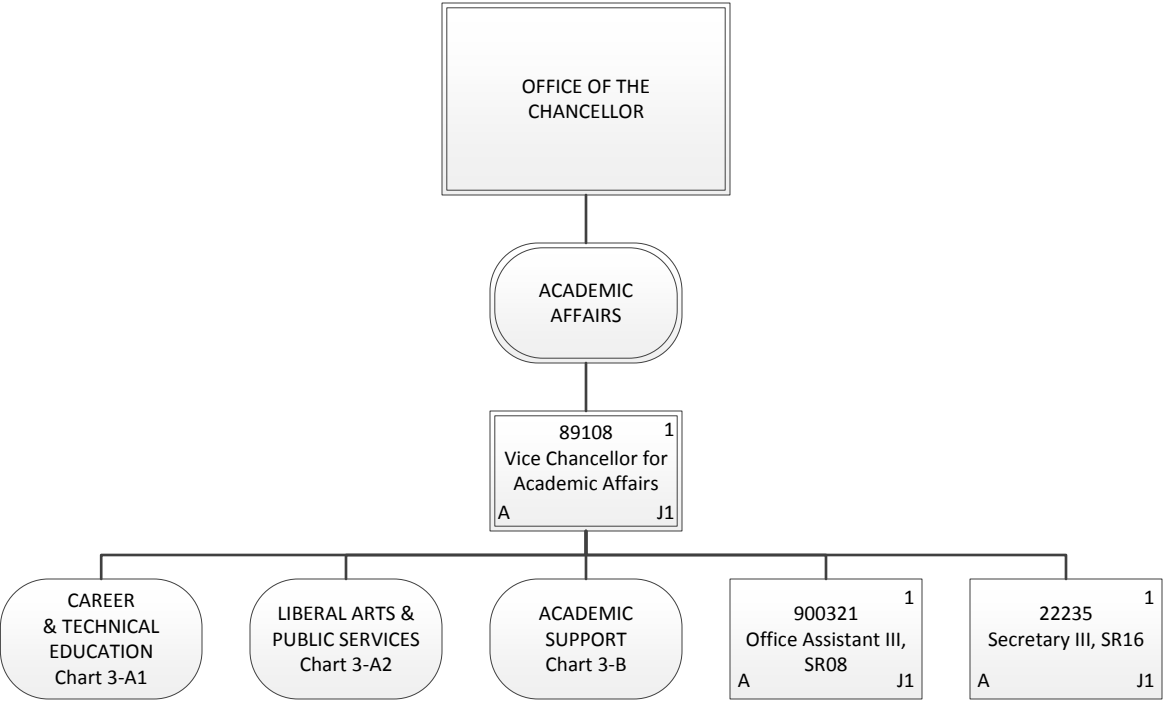
Organization Chart

Chart 1

Permanent	228.00
General Fund	227.00
Special Fund	1.00
Temporary	5.00
General Fund	5.00
Grand Total	233.00



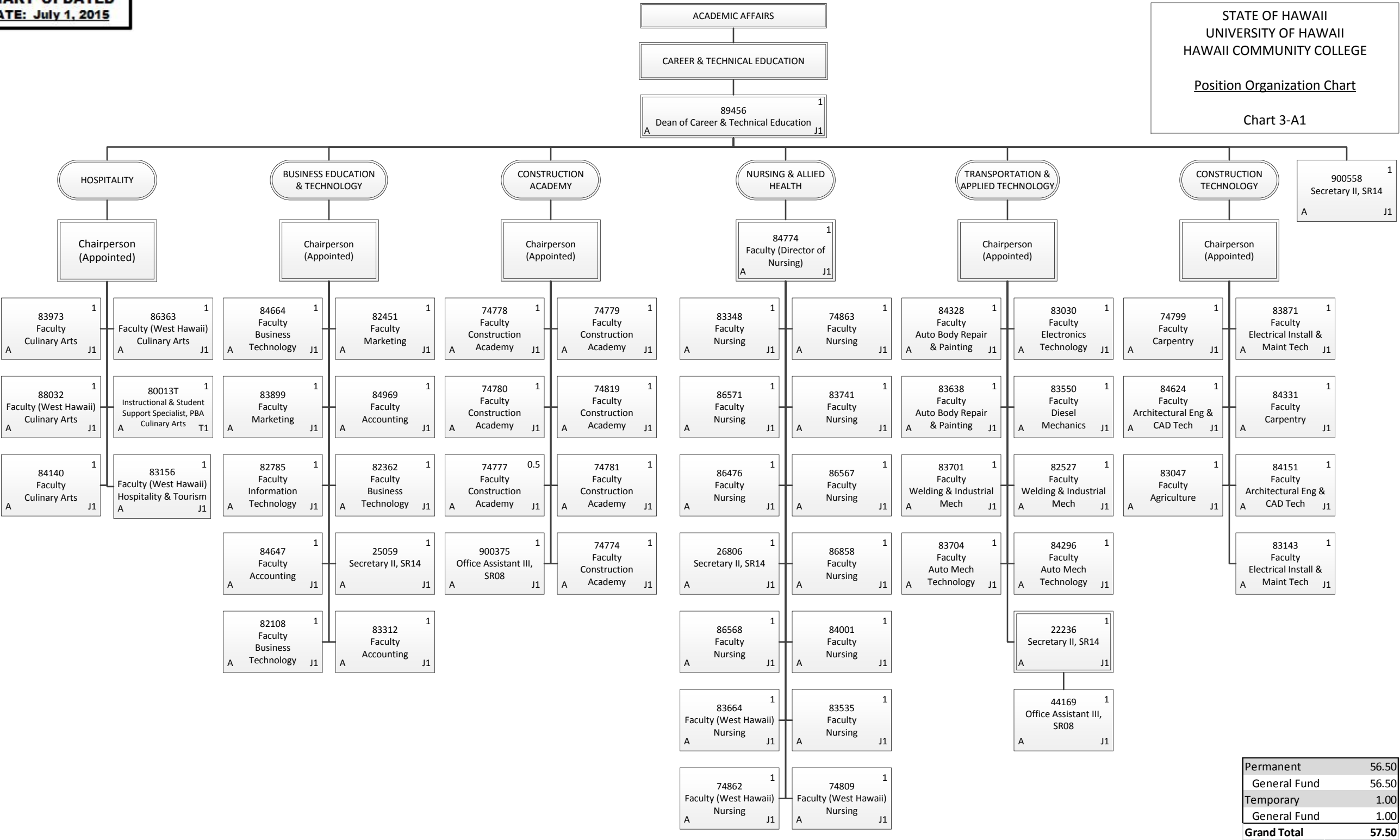
Permanent	4.00
General Fund	4.00
Grand Total	4.00

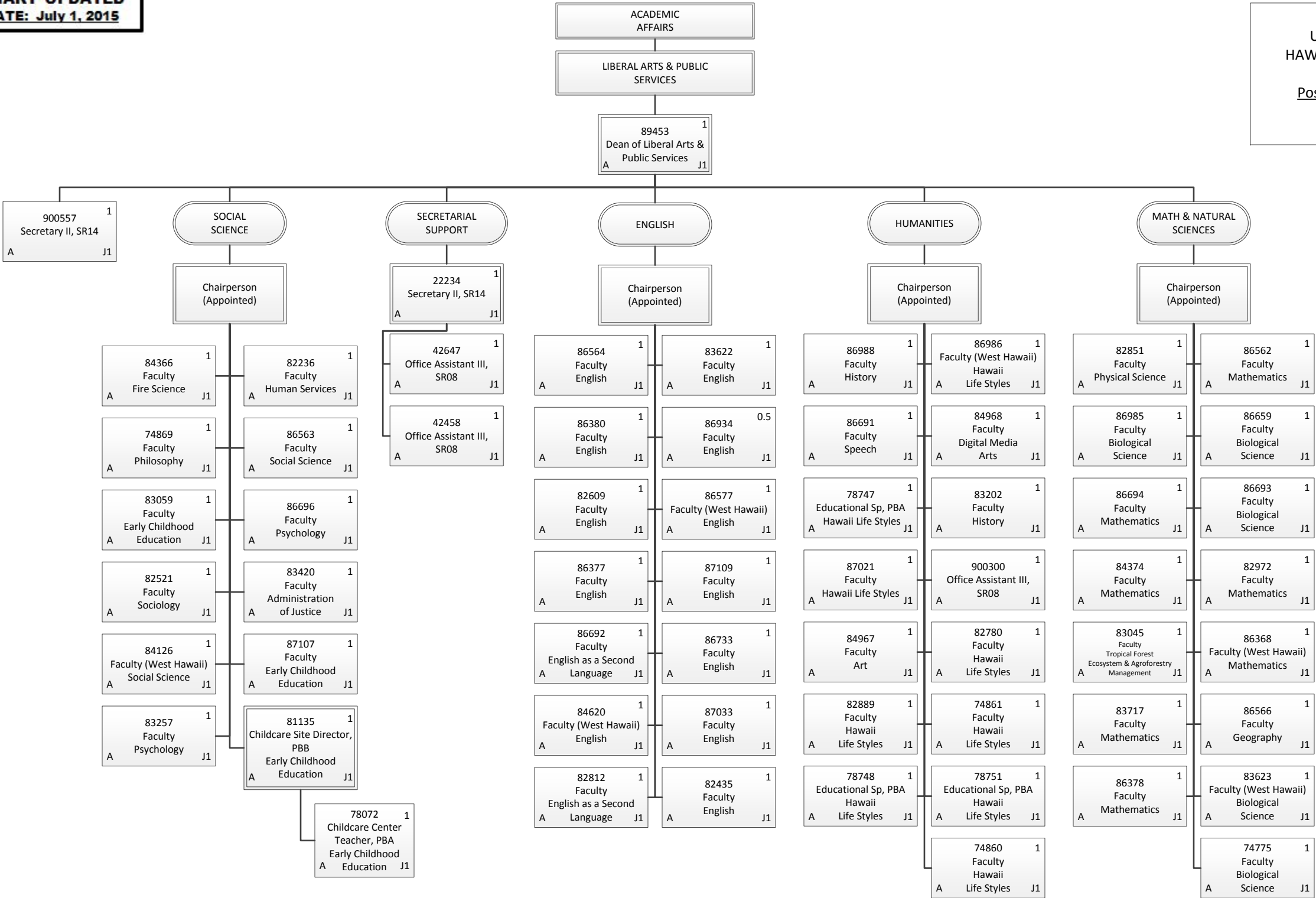


Permanent	3.00
General Fund	3.00
Grand Total	3.00

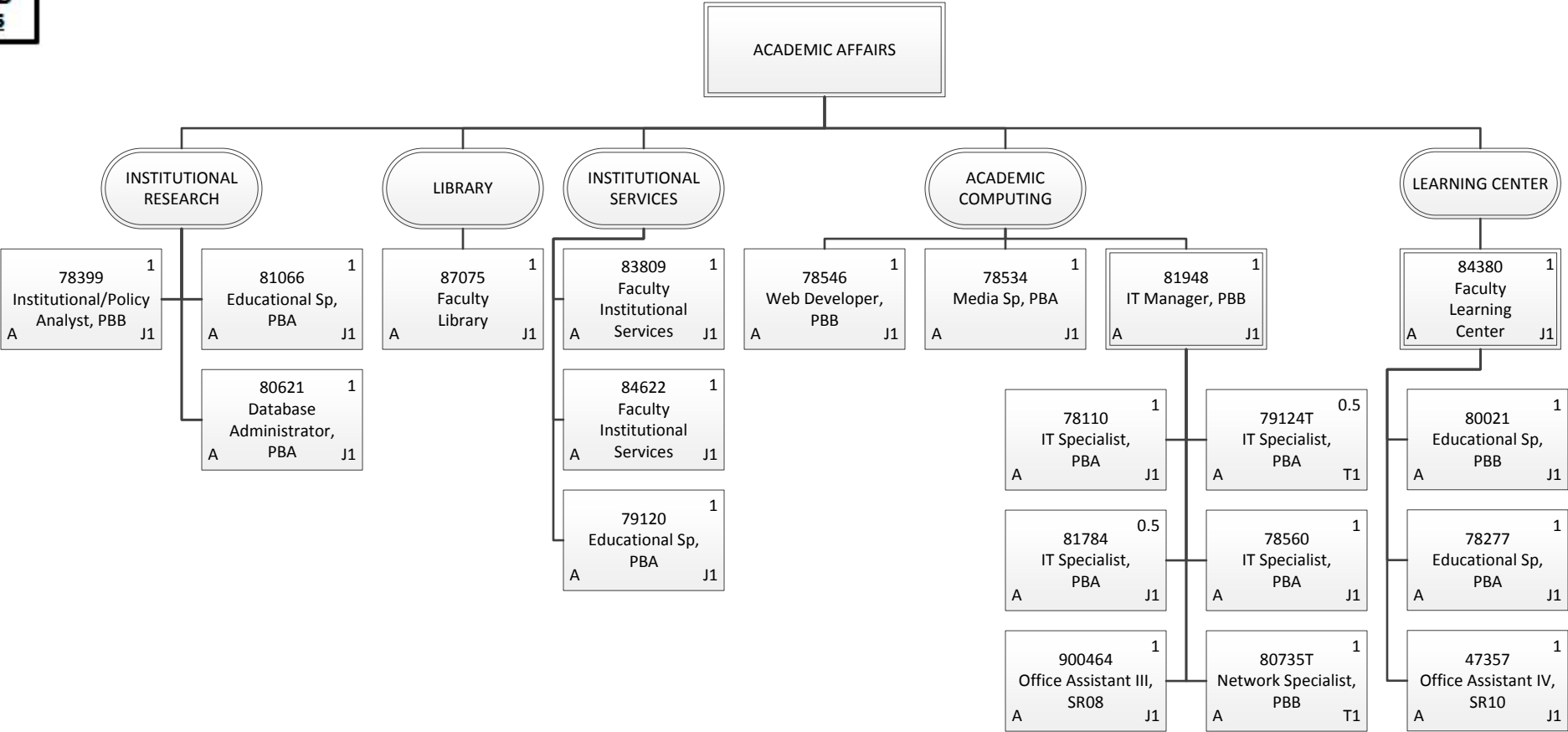
Position Organization Chart

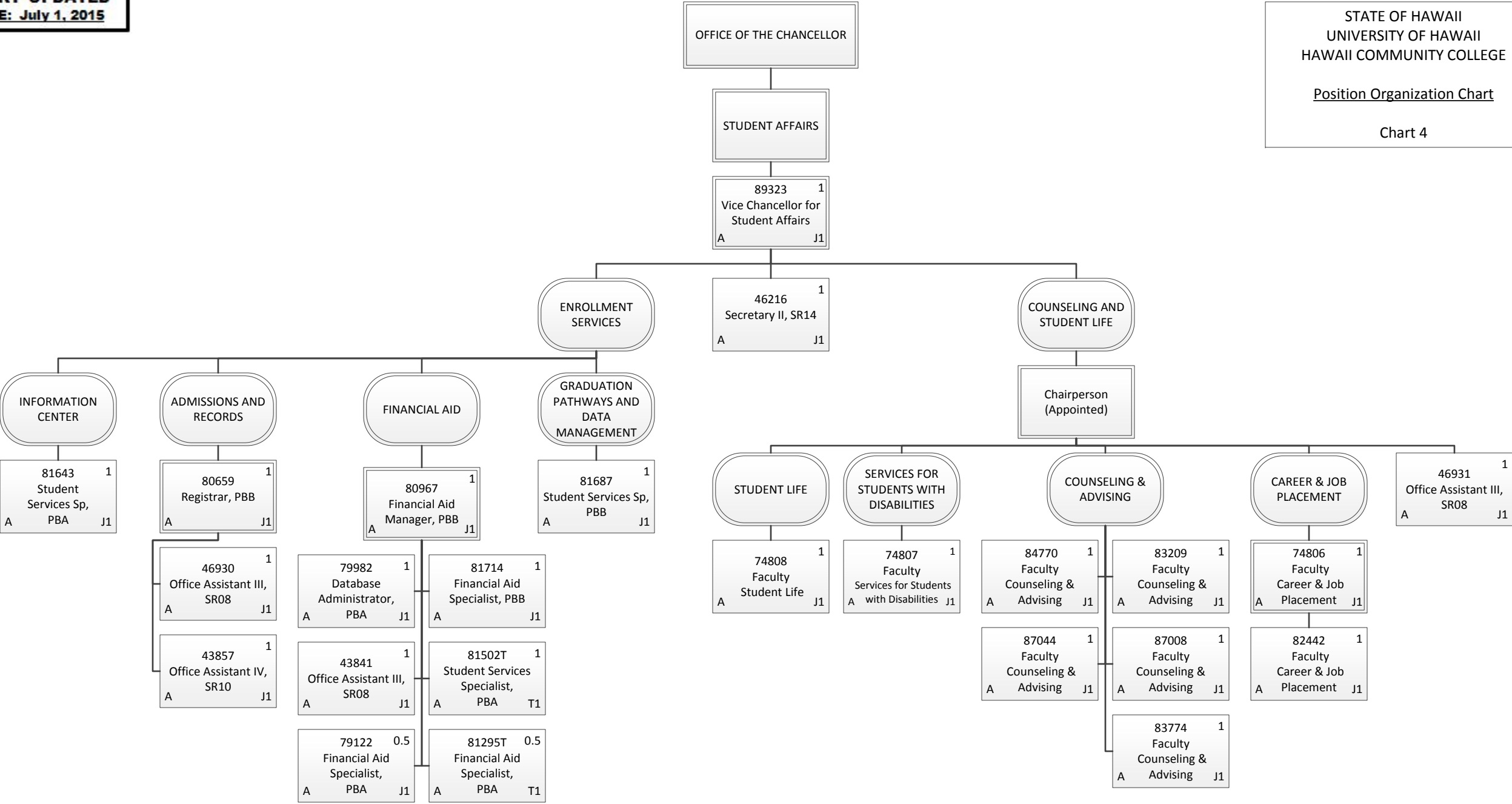
Chart 3-A1



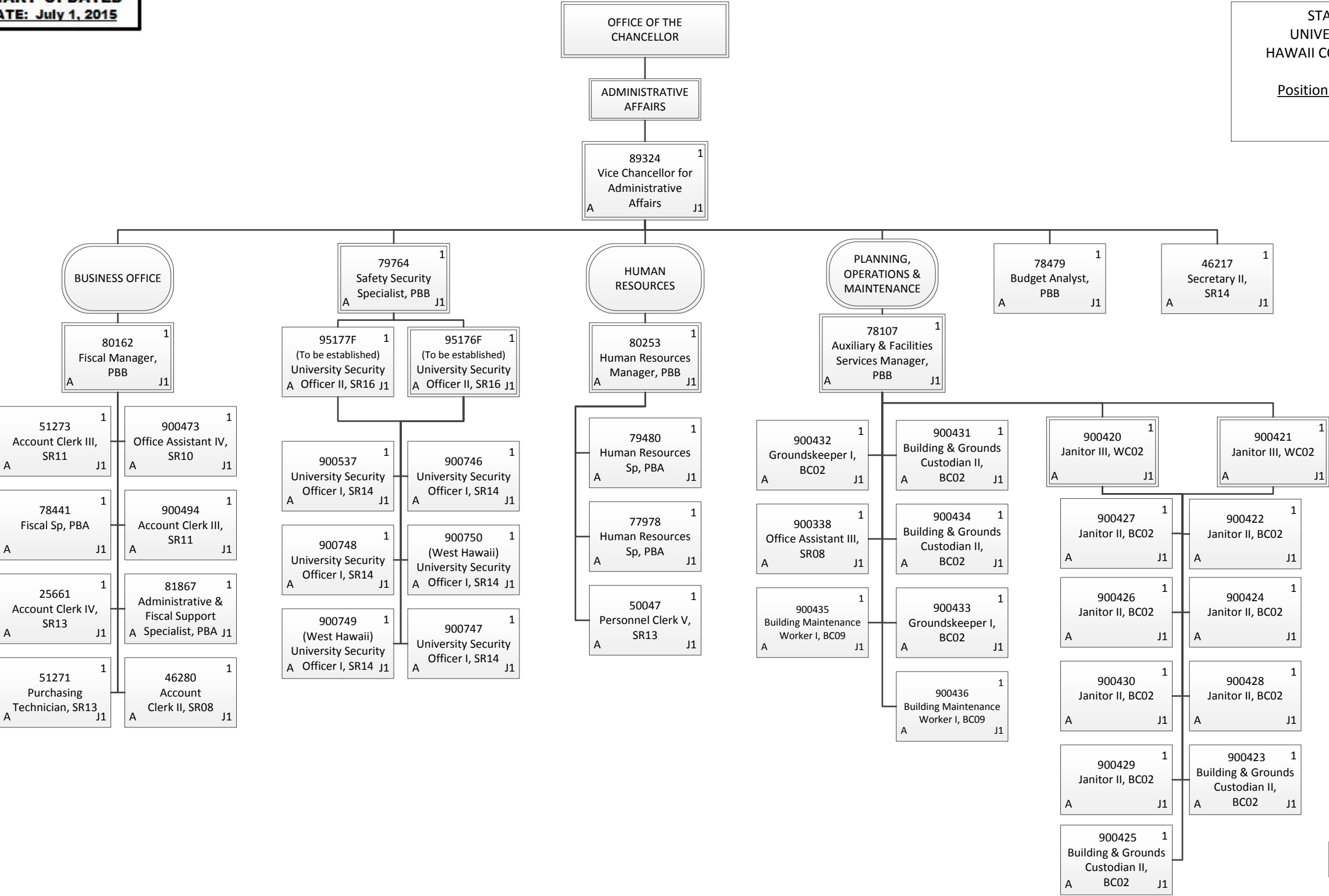


Permanent	61.50
General Fund	61.50
Grand Total	61.50

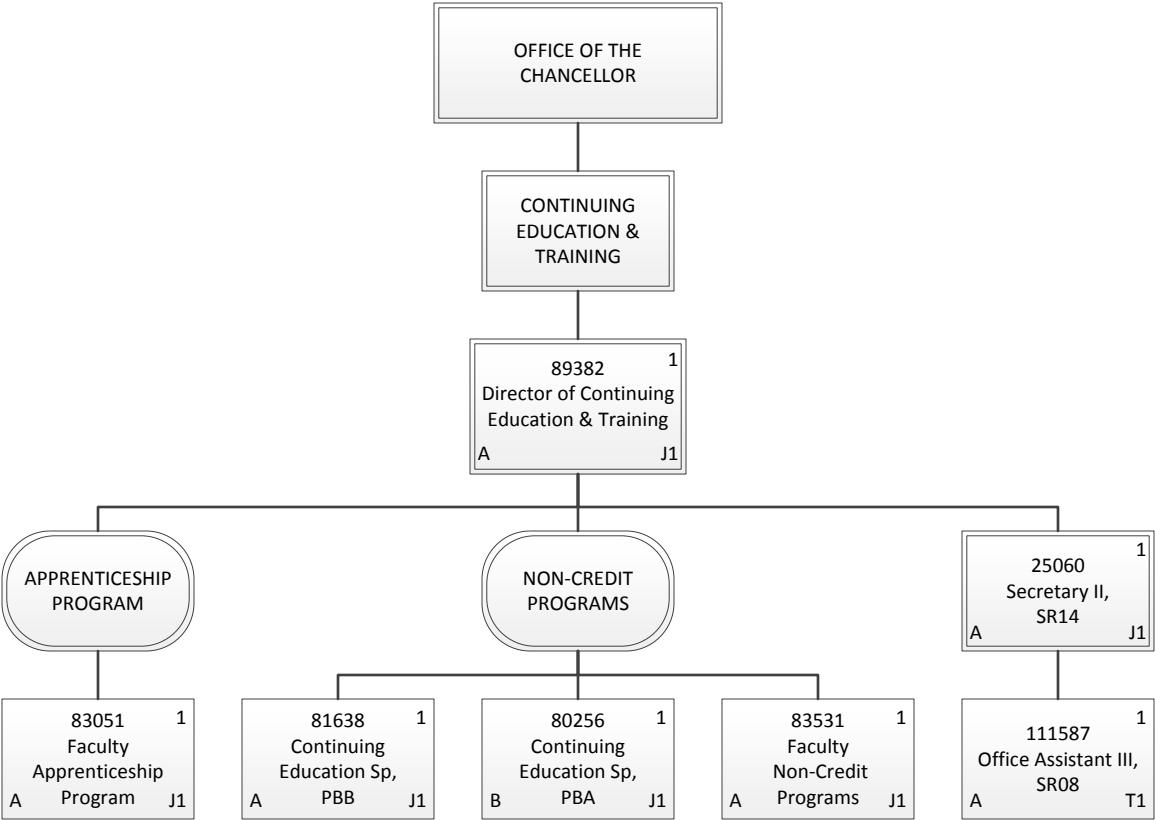




Permanent	21.50
General Fund	21.50
Temporary	1.50
General Fund	1.50
Grand Total	23.00



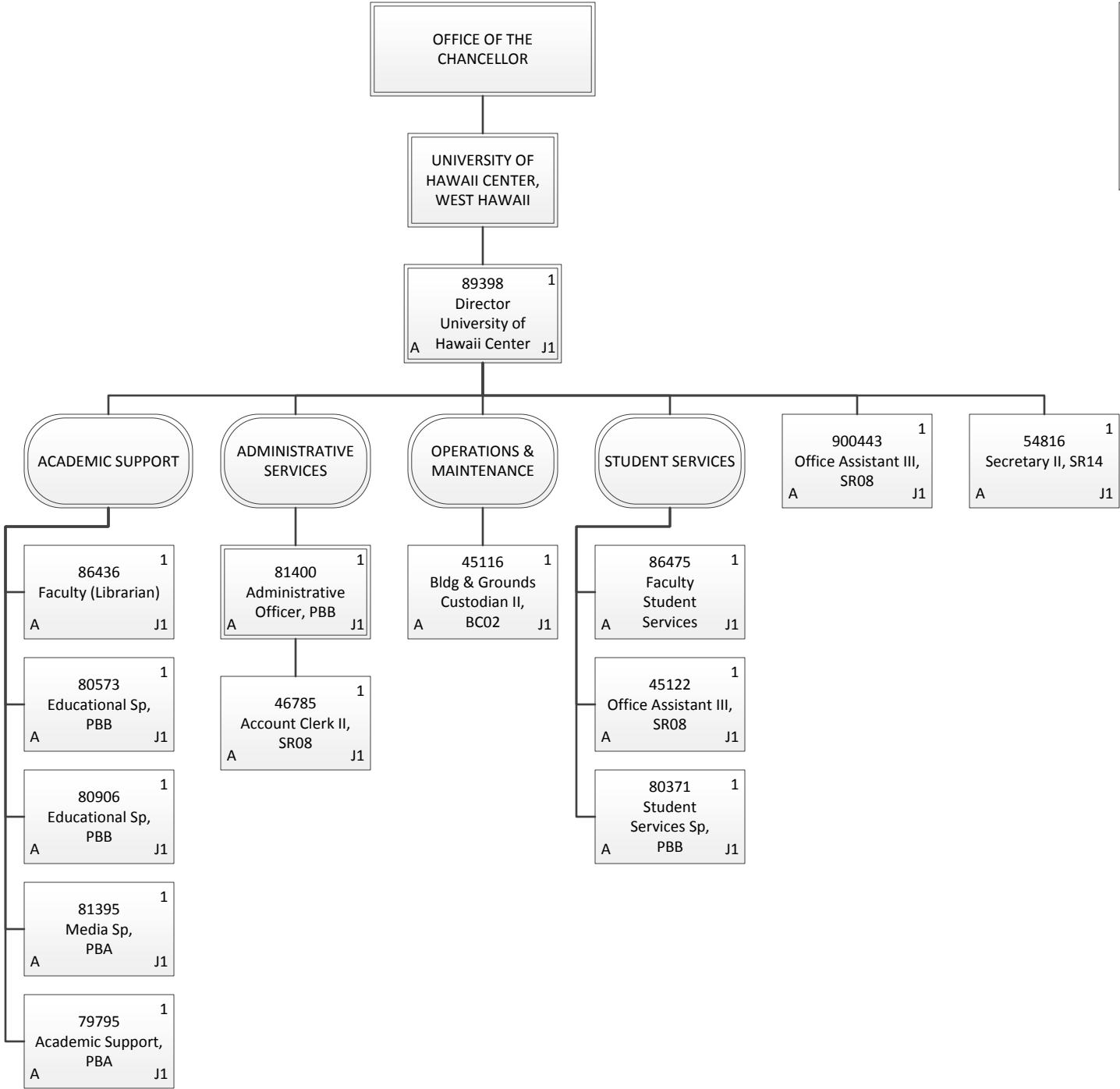
Permanent	44.00
General Fund	44.00
Grand Total	44.00



Permanent	6.00
General Fund	5.00
Special Fund	1.00
Temporary	1.00
General Fund	1.00
Grand Total	7.00

Position Organization Chart

Chart 7



Permanent	14.00
General Fund	14.00
Grand Total	14.00