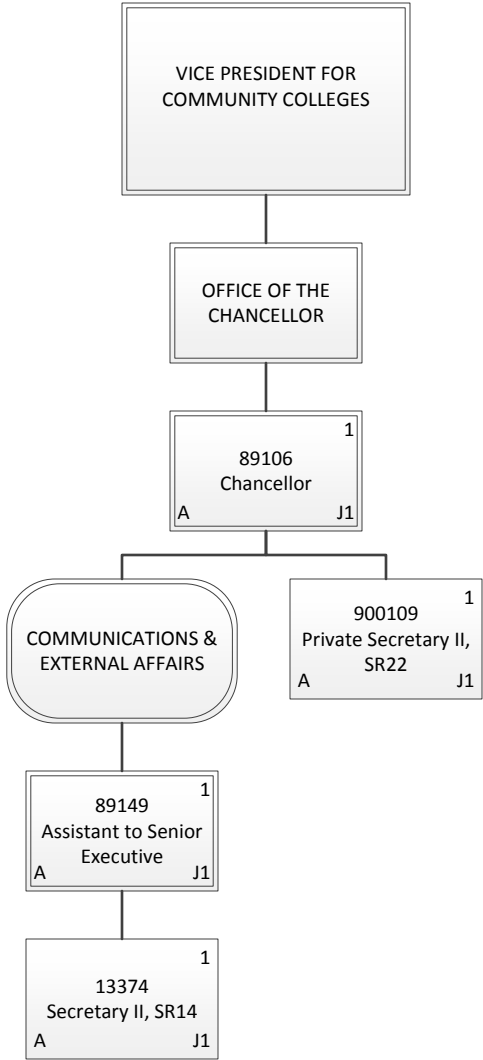


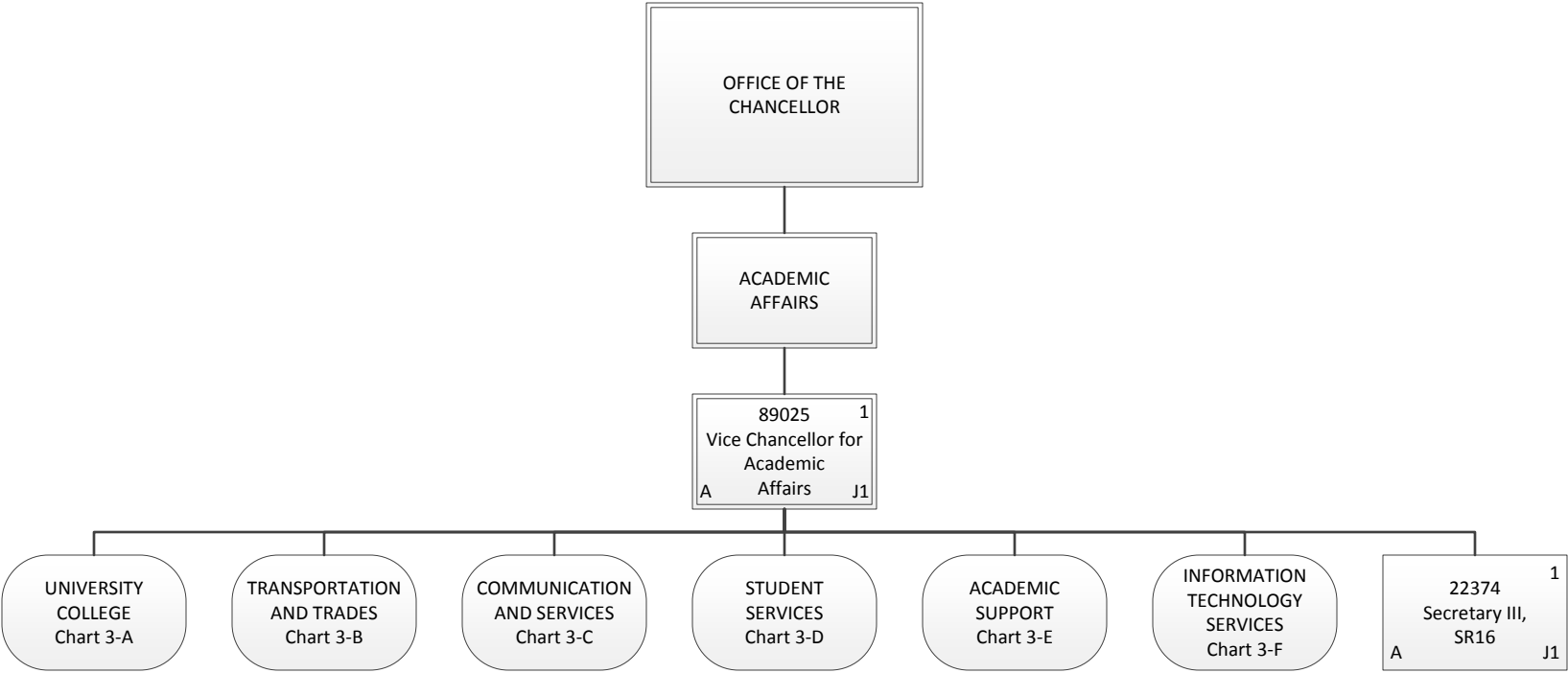
Permanent	331.00
General Fund	325.00
Special Fund	6.00
Temporary	6.00
General Fund	6.00
Grand Total	337.00



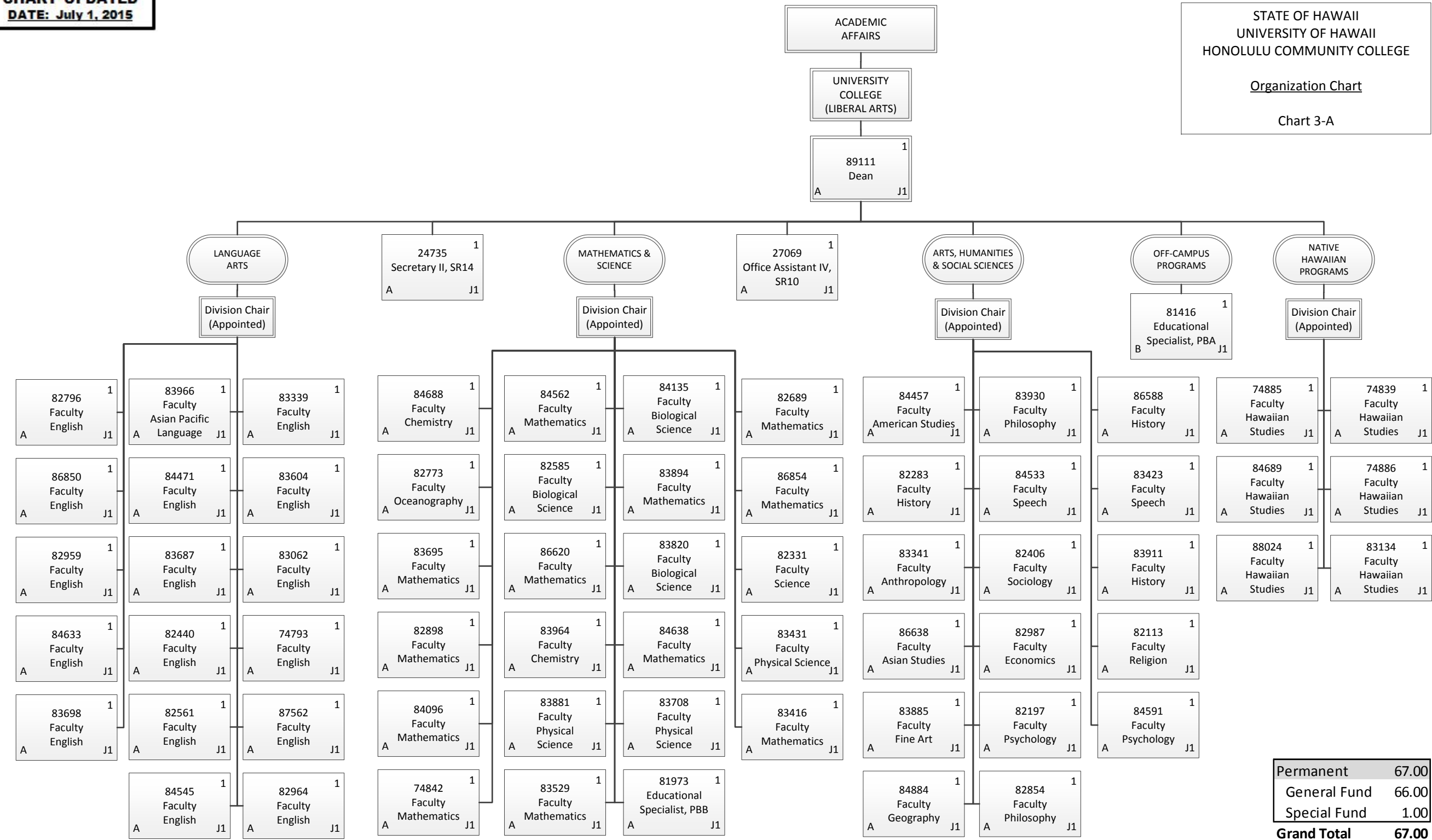
Organization Chart

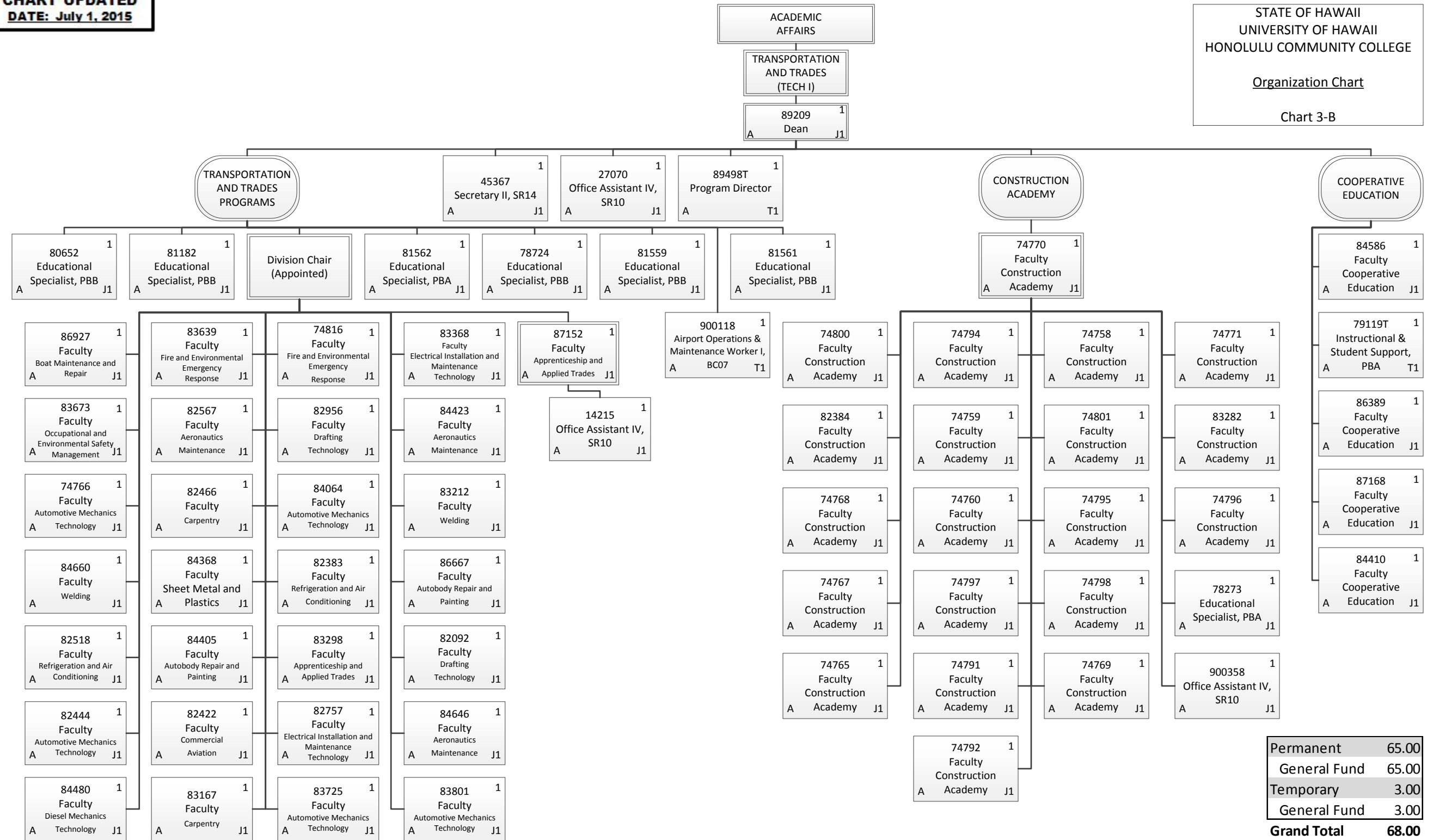
Chart 2

Permanent	4.00
General Fund	4.00
Grand Total	4.00



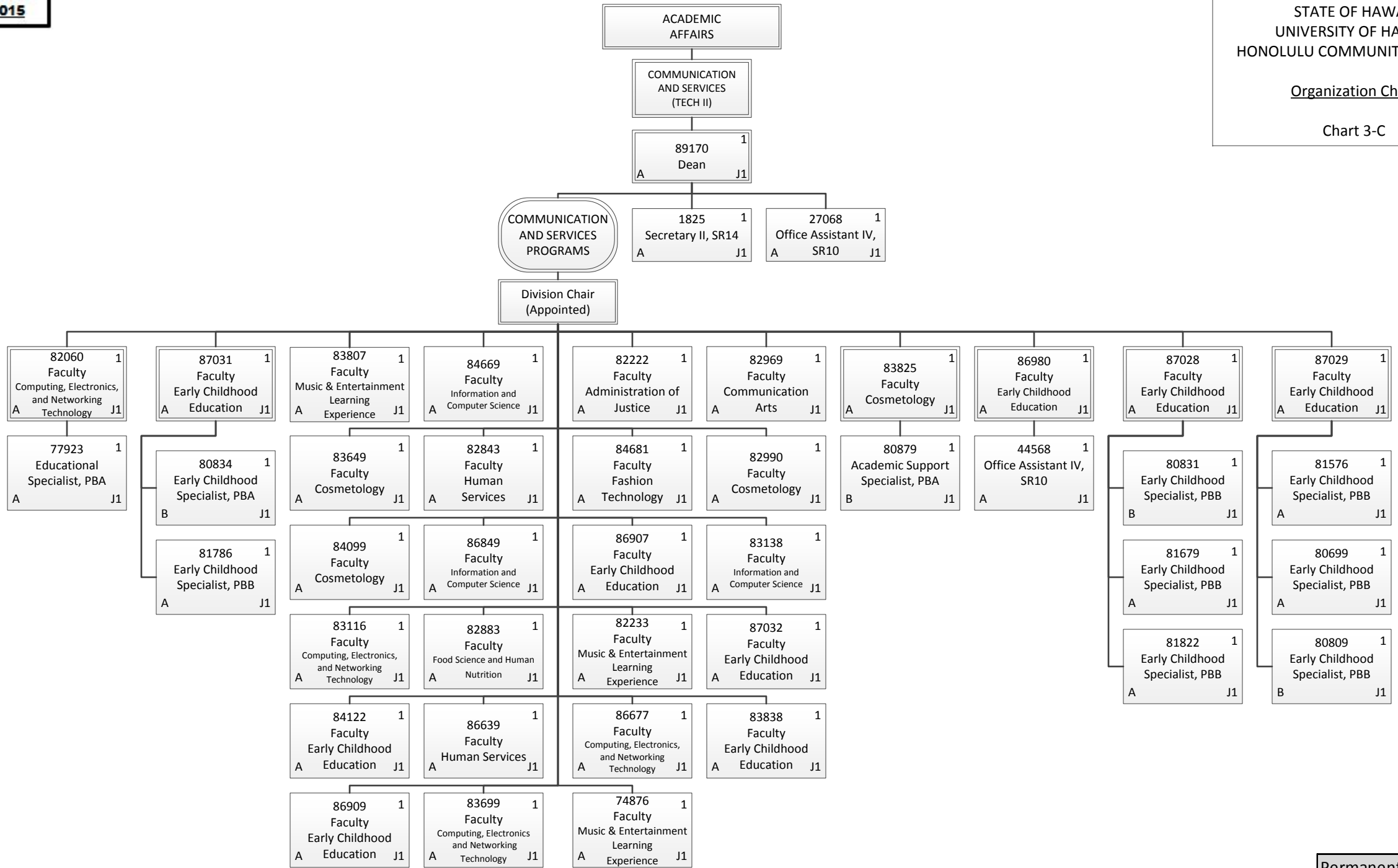
Permanent	2.00
General Fund	2.00
Grand Total	2.00



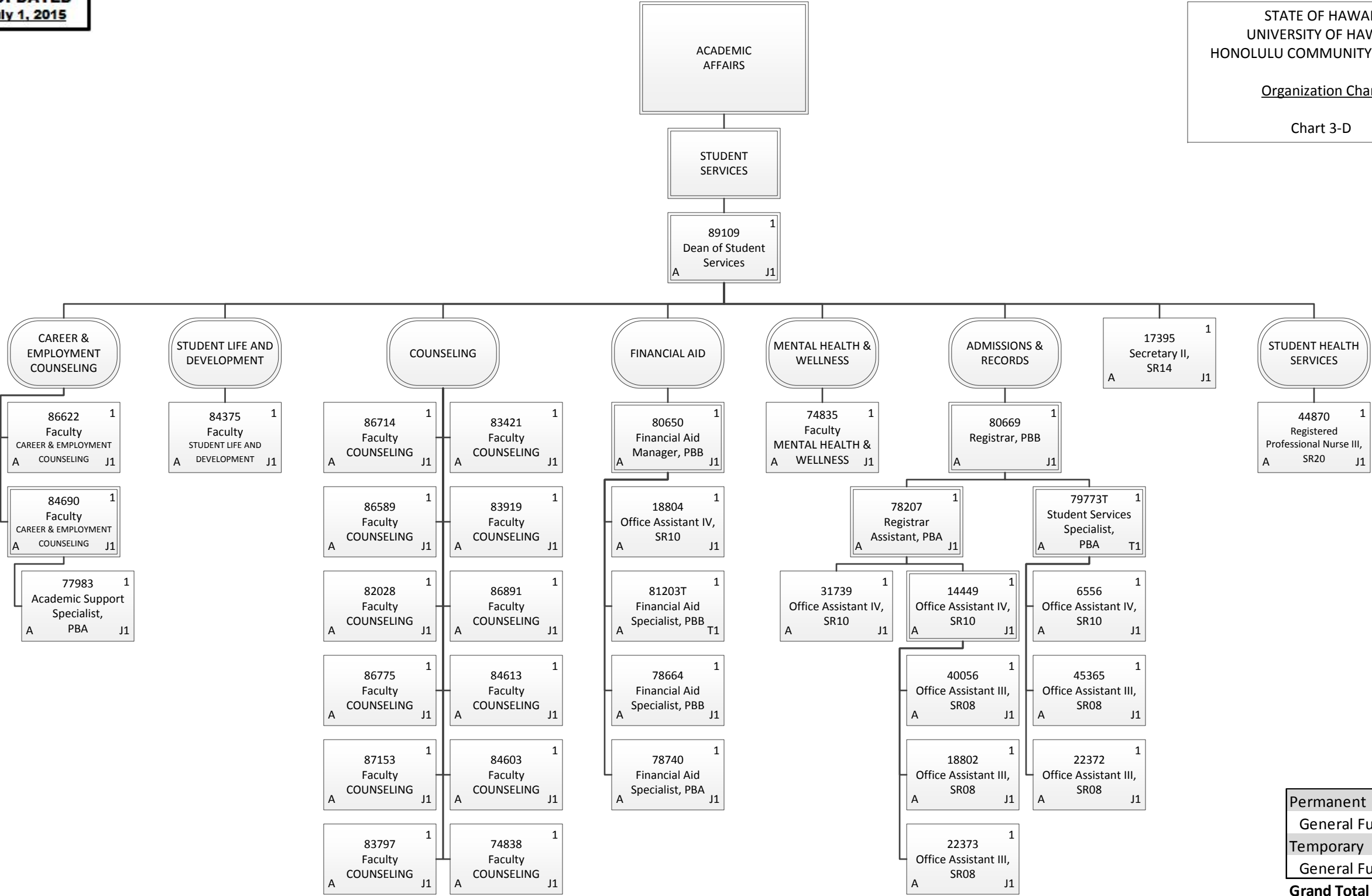


Organization Chart

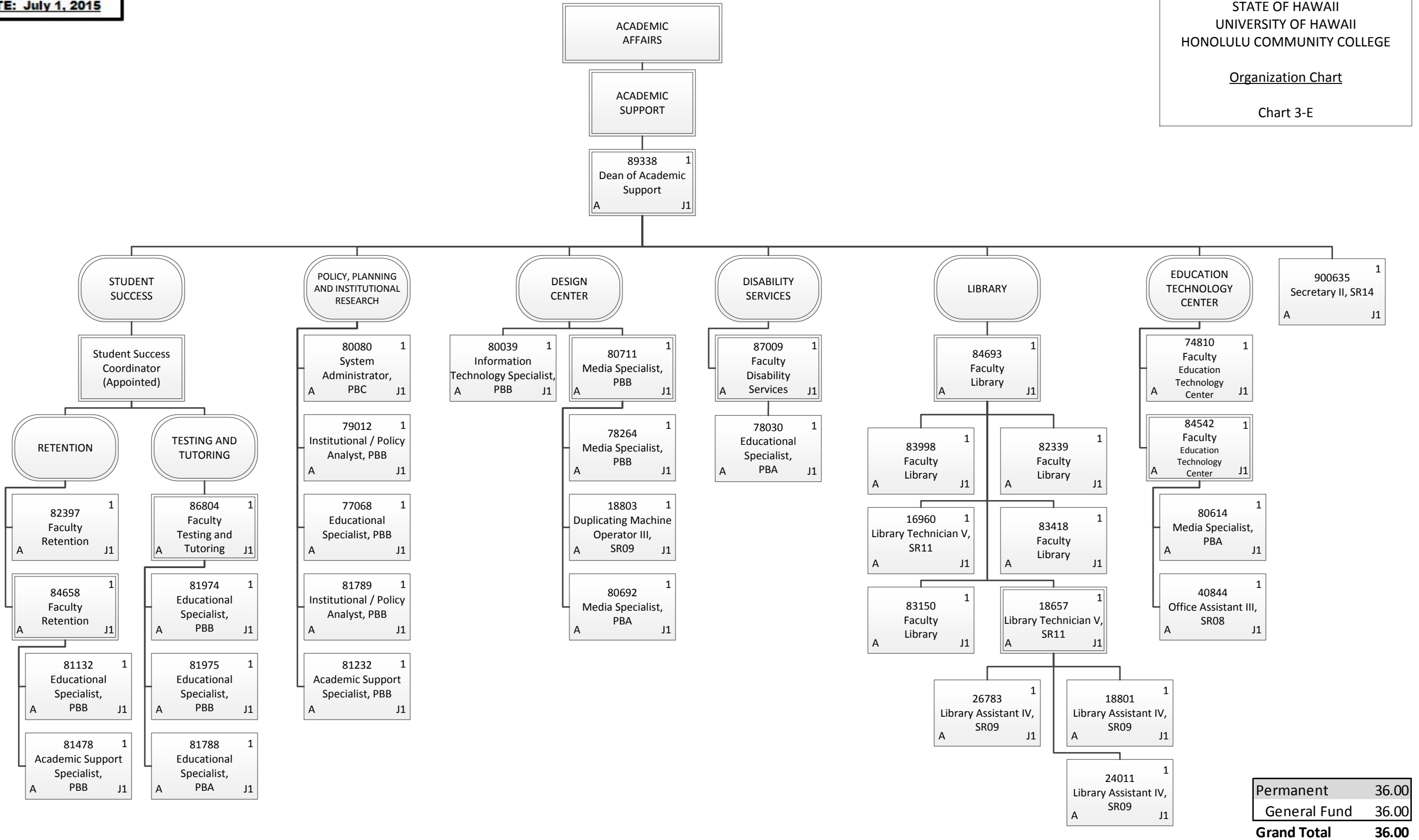
Chart 3-C



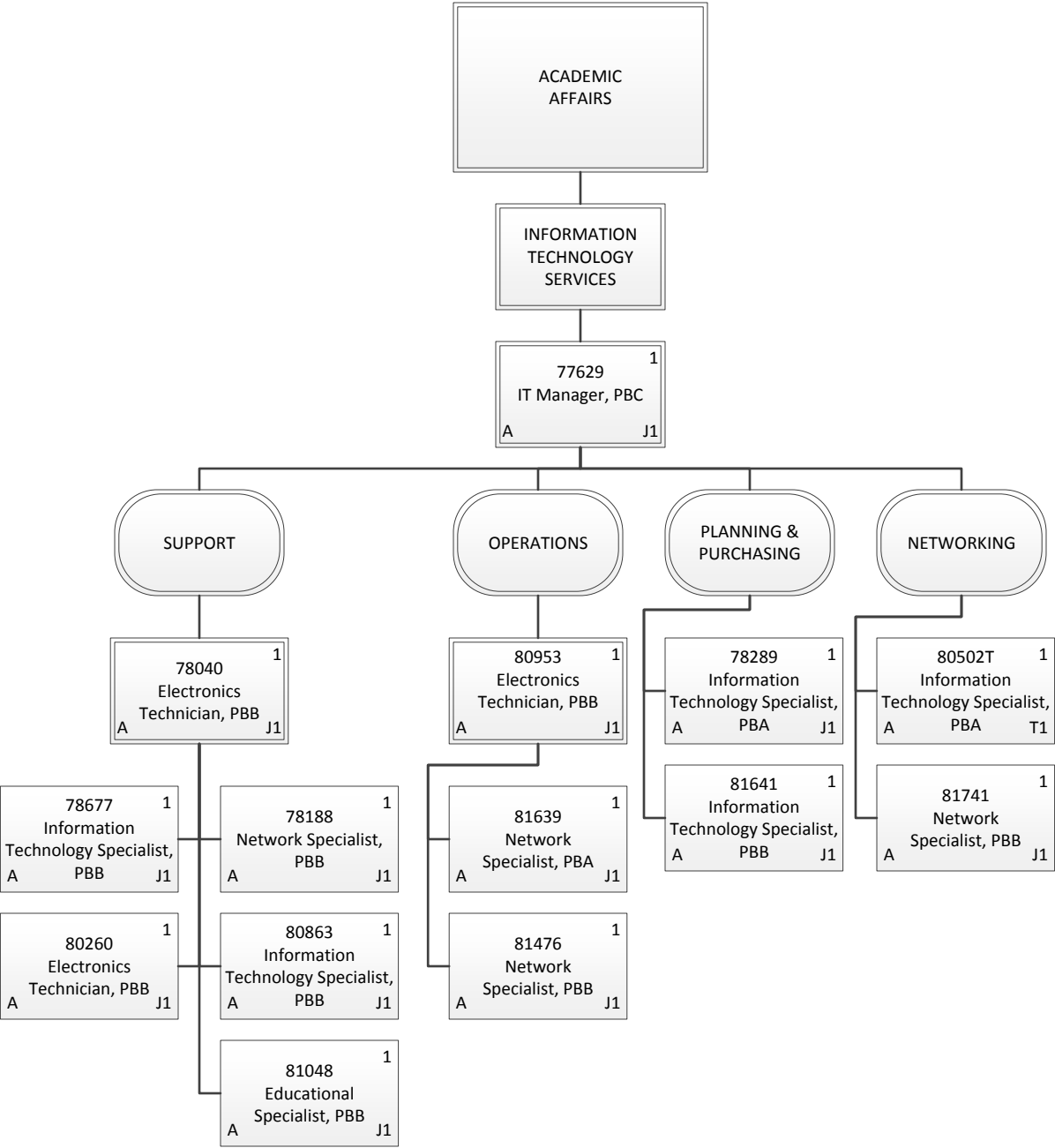
Permanent	43.00
General Fund	39.00
Special Fund	4.00
Grand Total	43.00



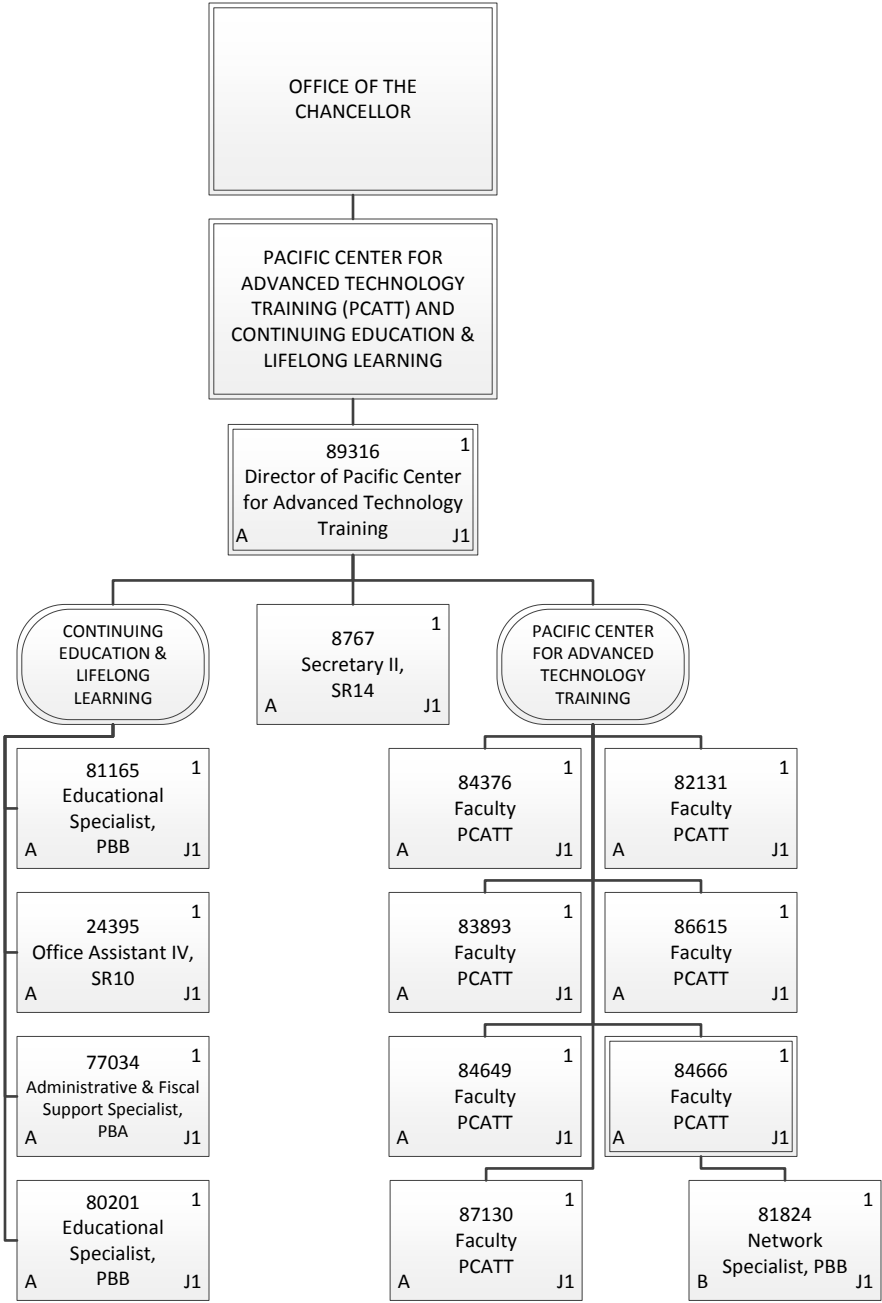
Permanent	34.00
General Fund	34.00
Temporary	2.00
General Fund	2.00
Grand Total	36.00



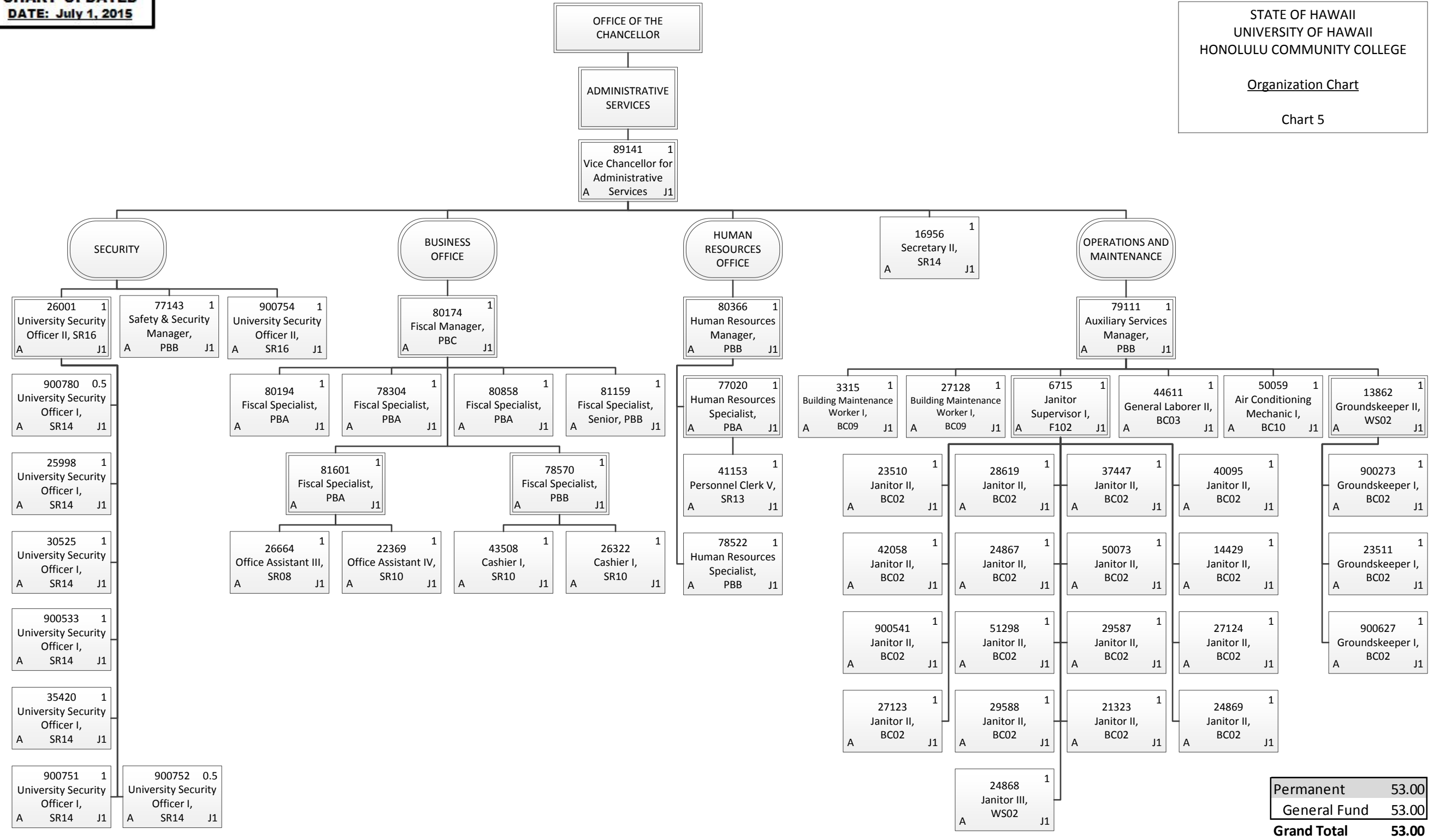
Permanent	36.00
General Fund	36.00
Grand Total	36.00



Permanent	13.00
General Fund	13.00
Temporary	1.00
General Fund	1.00
Grand Total	14.00



Permanent	14.00
General Fund	13.00
Special Fund	1.00
Grand Total	14.00



Permanent	53.00
General Fund	53.00
Grand Total	53.00