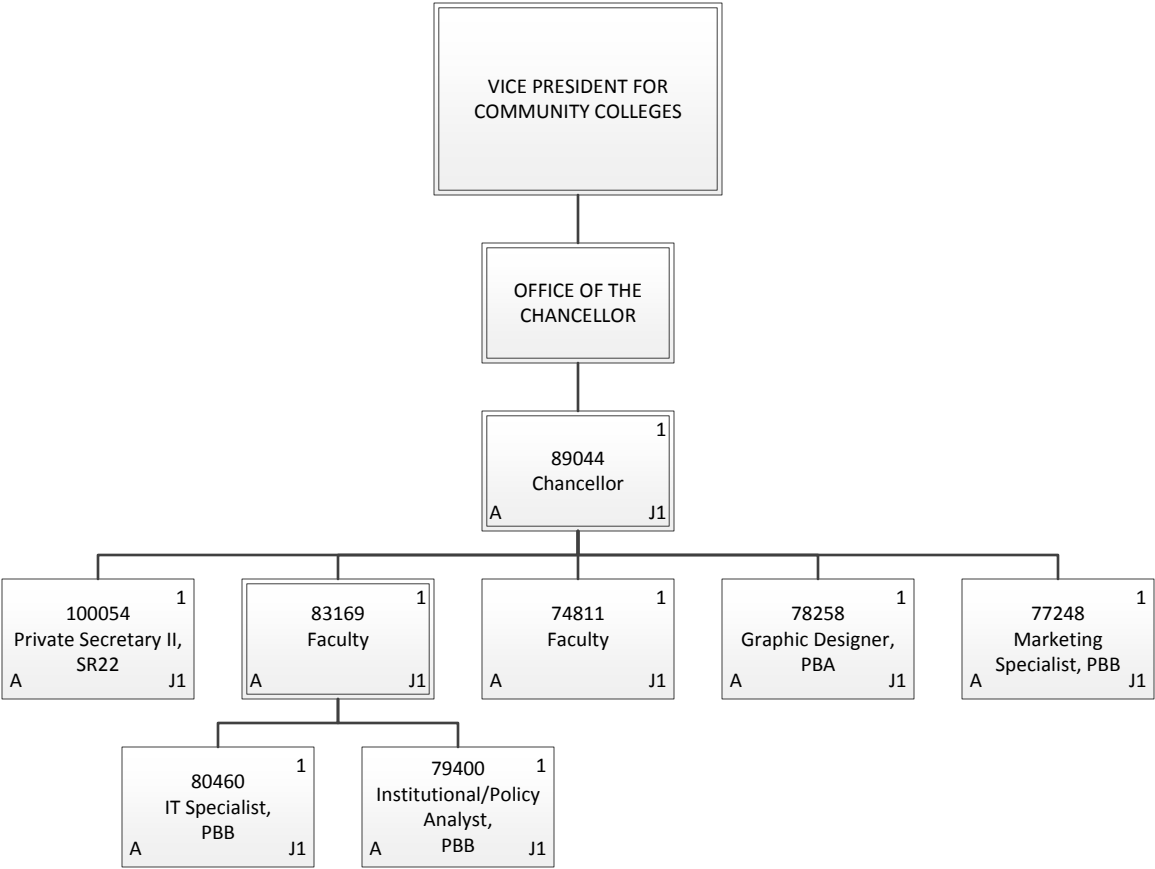


Organization Chart

Chart 1

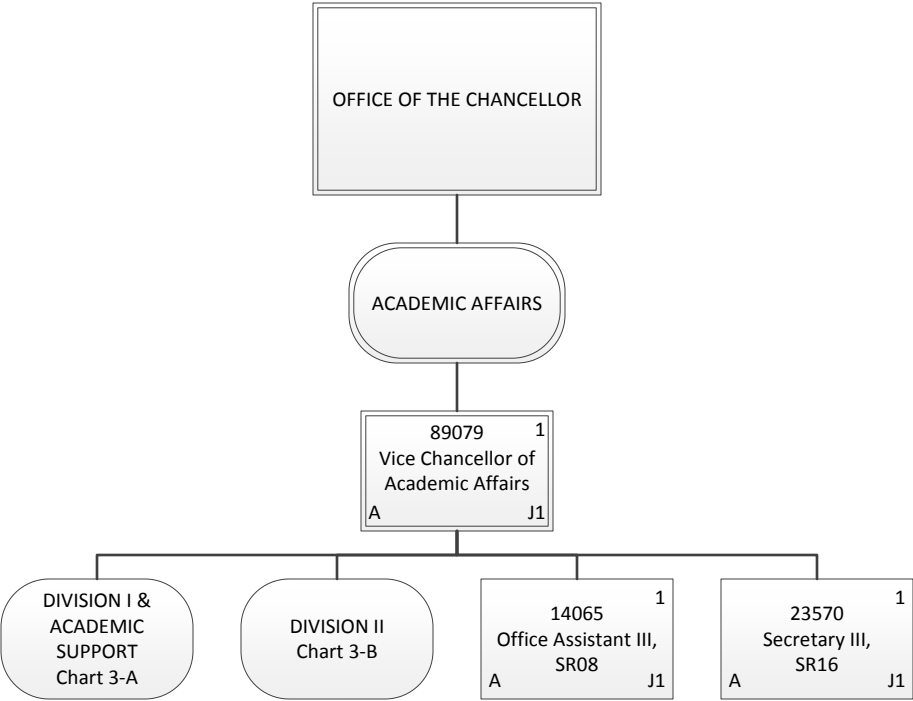
Permanent	152.50
General Fund	152.50
Temporary	5.00
General Fund	5.00
Grand Total	157.50



Organization Chart

Chart 2

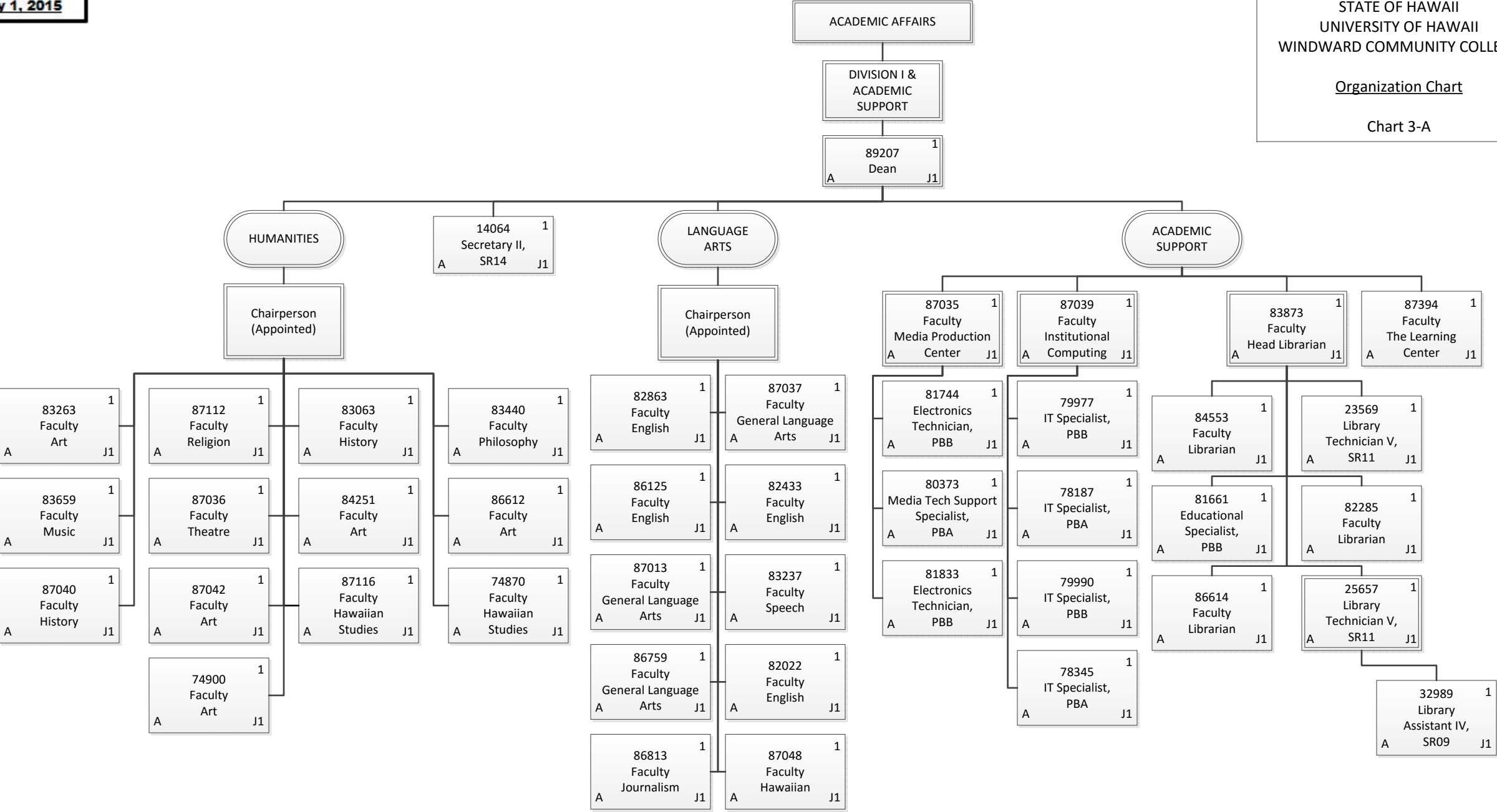
Permanent	8.00
General Fund	8.00
Grand Total	8.00



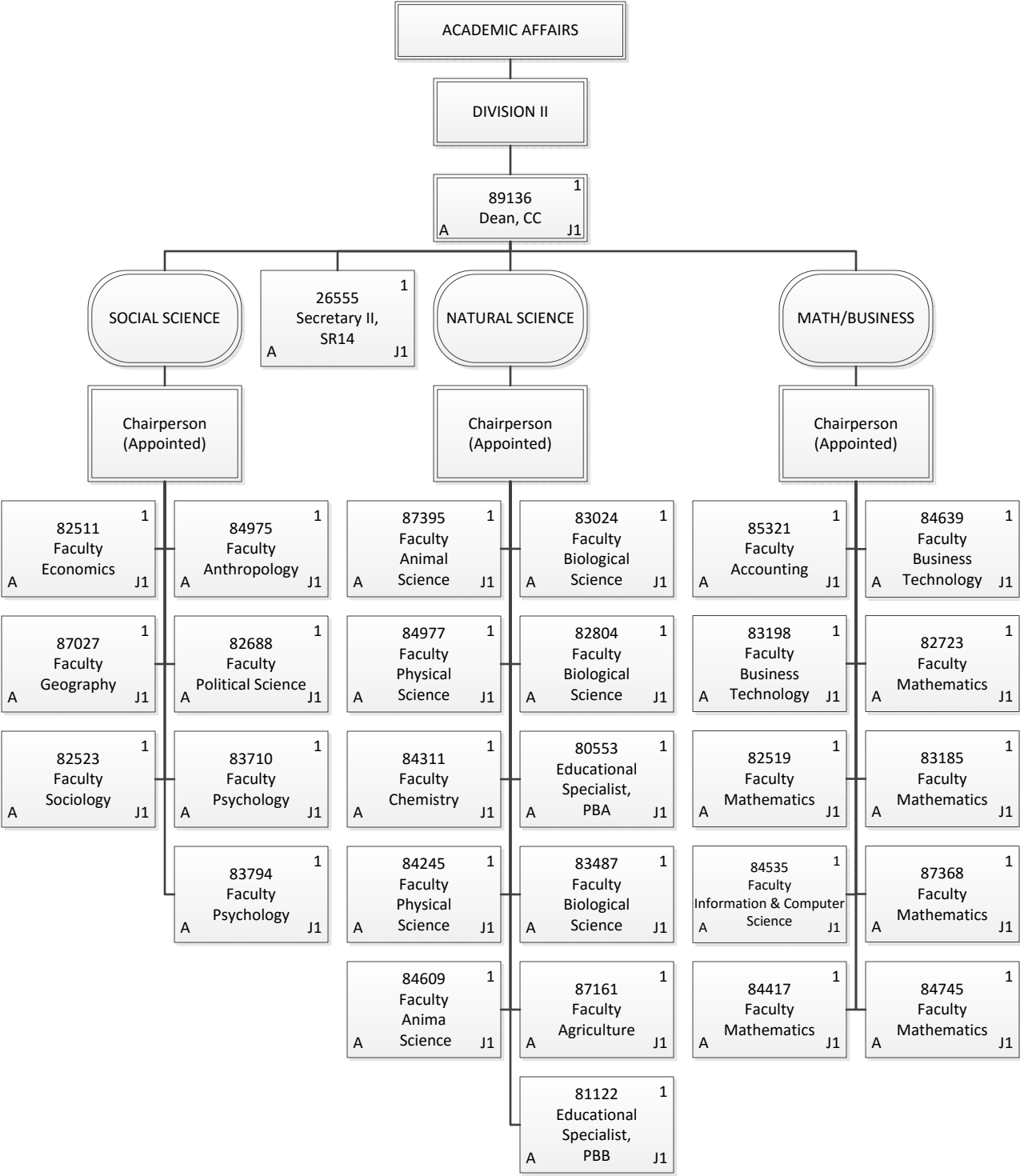
Organization Chart

Chart 3

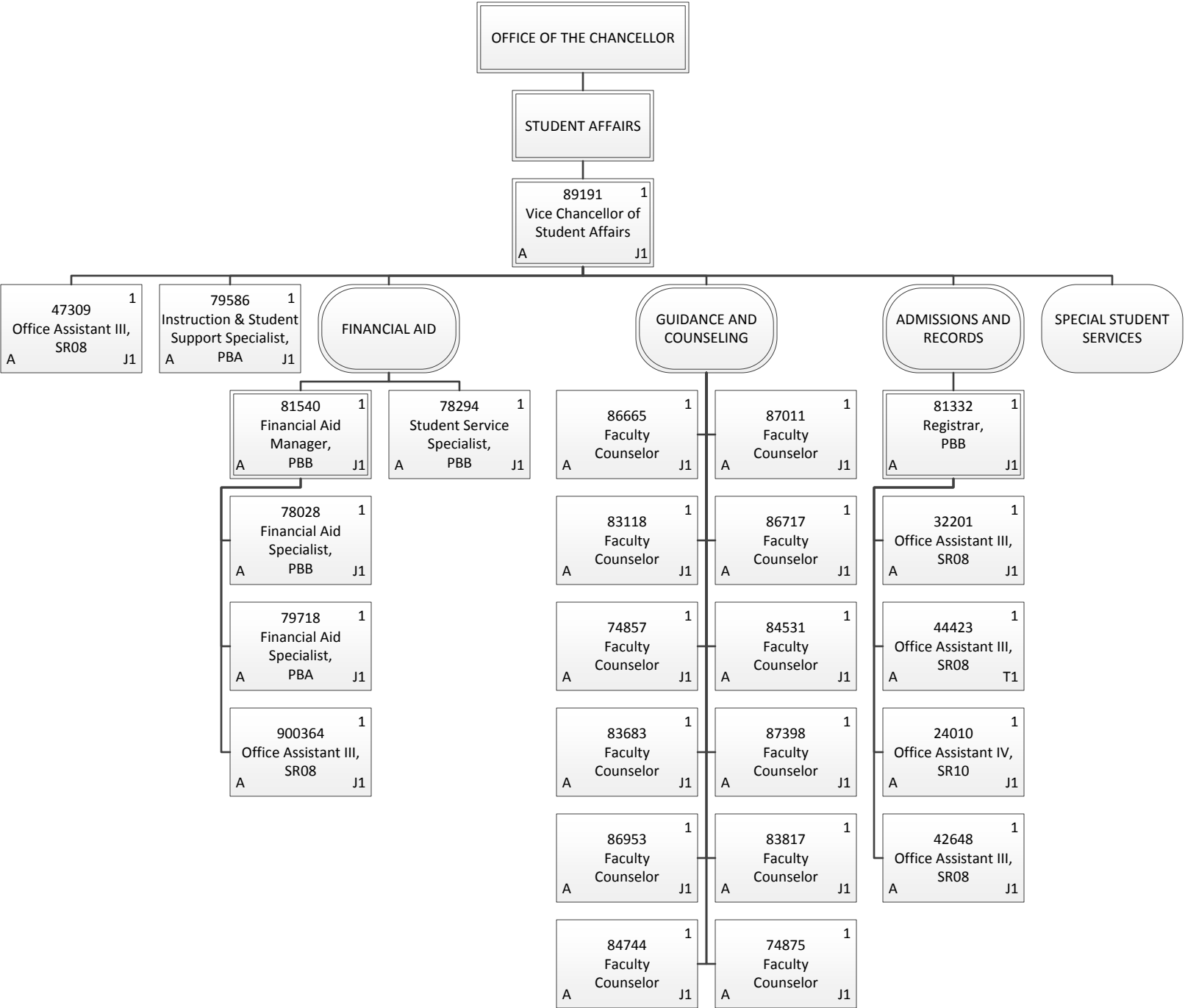
Permanent	3.00
General Fund	3.00
Grand Total	3.00



Permanent	43.00
General Fund	43.00
Grand Total	43.00



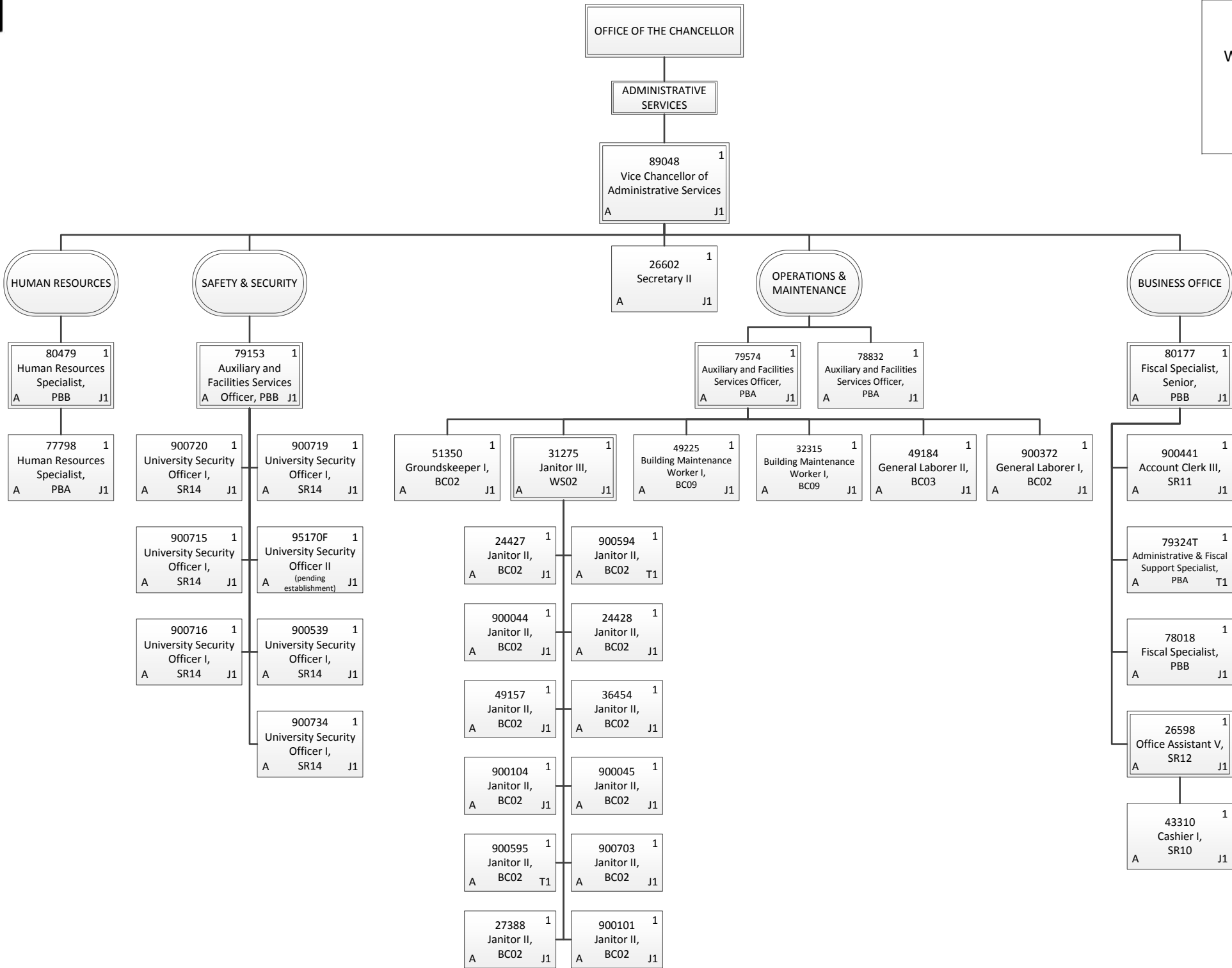
Permanent	30.00
General Fund	30.00
Grand Total	30.00



Permanent	24.00
General Fund	24.00
Temporary	1.00
General Fund	1.00
Grand Total	25.00

Organization Chart

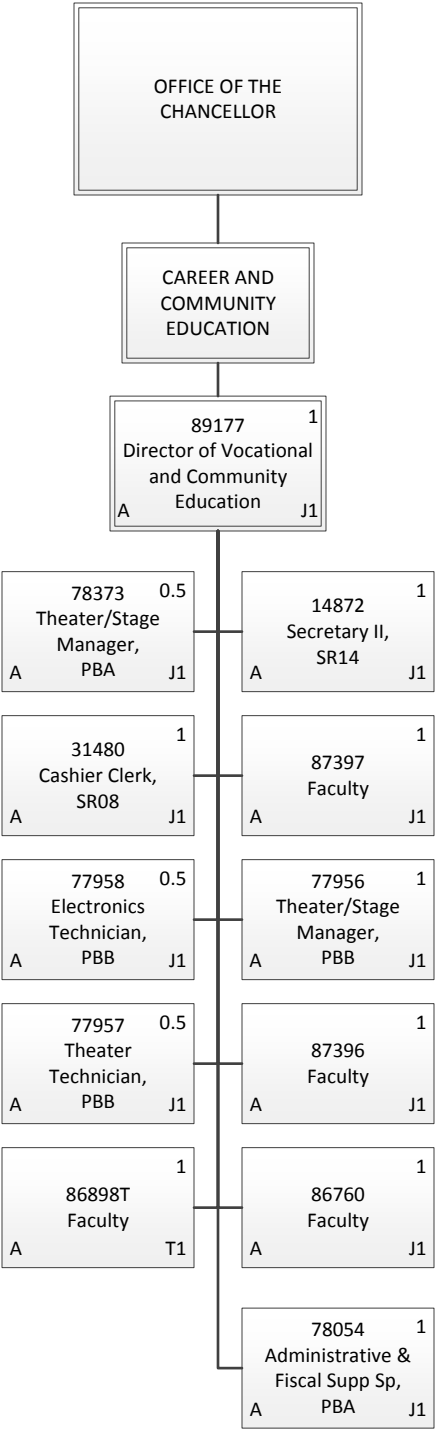
Chart 5



Permanent	35.00
General Fund	35.00
Temporary	3.00
General Fund	3.00
Grand Total	38.00

Organization Chart

Chart 6



Permanent	9.50
General Fund	9.50
Temporary	1.00
General Fund	1.00
Grand Total	10.50