

CHART I

General Fund FTE: 29.00

Grand Total General Fund FTE: 78.00

Grand Total General Fund FTE
(Auth Temp): 1.00

OFFICE OF THE CHANCELLOR

OFFICE OF THE VICE CHANCELLOR FOR ACADEMIC AFFAIRS

SHIDLER COLLEGE OF BUSINESS
OFFICE OF THE DEAN
Org Code: MADNBS

Dean, #89027 1.00
Secretary III, SR-16, #08040 1.00
Director of Graduate Programs*

ACADEMIC AFFAIRS
Org Code: MAADBS

Associate Dean, #89120 1.00
Secretary II, SR-14, #12851 1.00**

OFFICE OF COMPUTER RESOURCES AND
TELECOMMUNICATIONS
Org Code: MAITBS

IT Manager, PBB, #80740 1.00
System Admin, PBB, #80705, #81120 2.00
Institutional Analyst, PBB, #80469 1.00

ADMINISTRATIVE/FISCAL SERVICES
Org Code: MAASBS

Administrative Off, Senior, PBB, #80685 1.00

STUDENT SERVICES
Org Code: MASSBS

Assistant Dean, #89159 1.00
Secretary II, SR-14, #15266 1.00
Office Assistant IV, SR-10, #15259 1.00
Specialist Type Faculty: #84164, #84924 2.00

PACIFIC RESEARCH INSTITUTE FOR
INFORMATION SYSTEMS AND
MANAGEMENT
Org Code: MAPRIM

Director***
Administrative Officer, PBB, #81150 1.00

PACIFIC ASIAN MANAGEMENT
INSTITUTE
Org Code: MAPAMI

Director*

ASIA-PACIFIC CENTER FOR EXECUTIVE
DEVELOPMENT
Org Code: MAACED

Non-Appropriated Funds

INSTRUCTIONAL DEPARTMENTS
Org Code: MABUS

Chart II

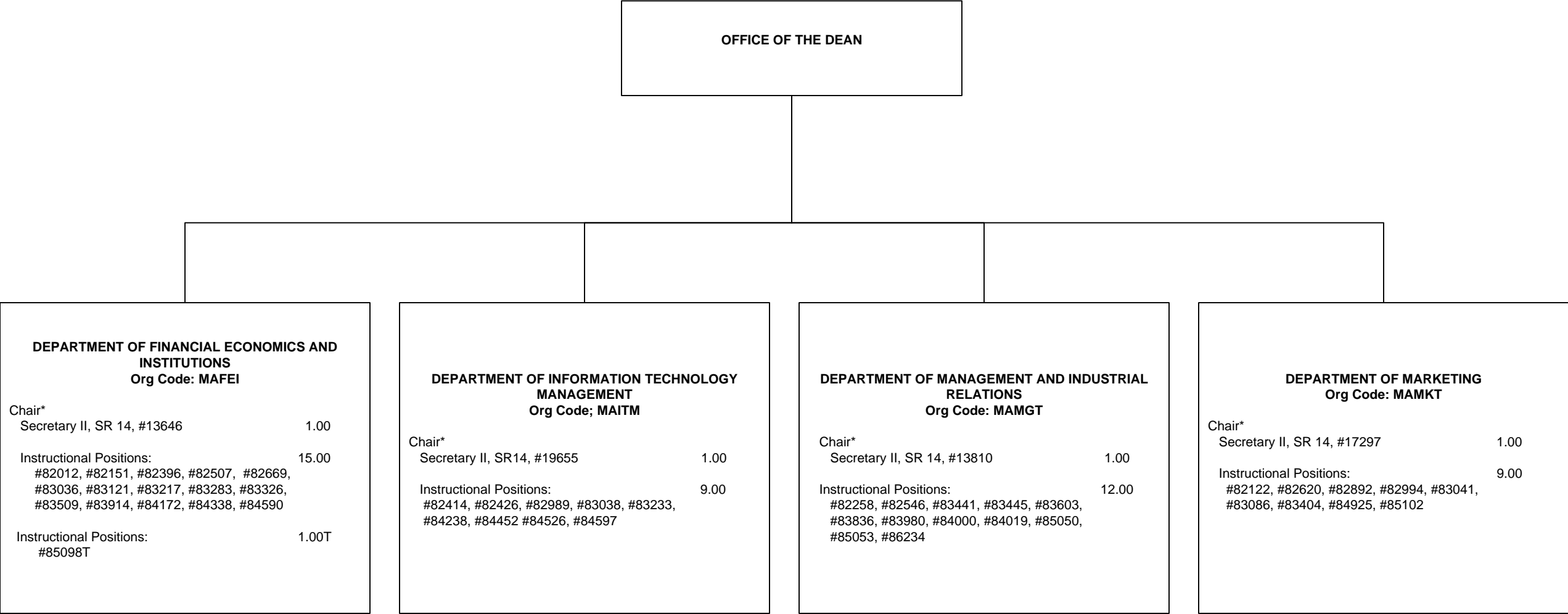
SCHOOL OF ACCOUNTANCY
Org Code: MAACC

Chair*
Secretary III, SR 14, #11893 1.00
Instructional Positions: 13.00
#82106, #82220, #82439, #82443,
#82477, #83090, #83351, #83375,
#83434, #83681, #84255, #86235,
#88087

* Appointed from Instructional Position.
** Abolished, Pending Reclassification
*** Pending, to be re-established

CHART II

General Fund FTE: 49.00
General Fund FTE (Auth Temp): 1.00



*Appointed from Instructional Position.