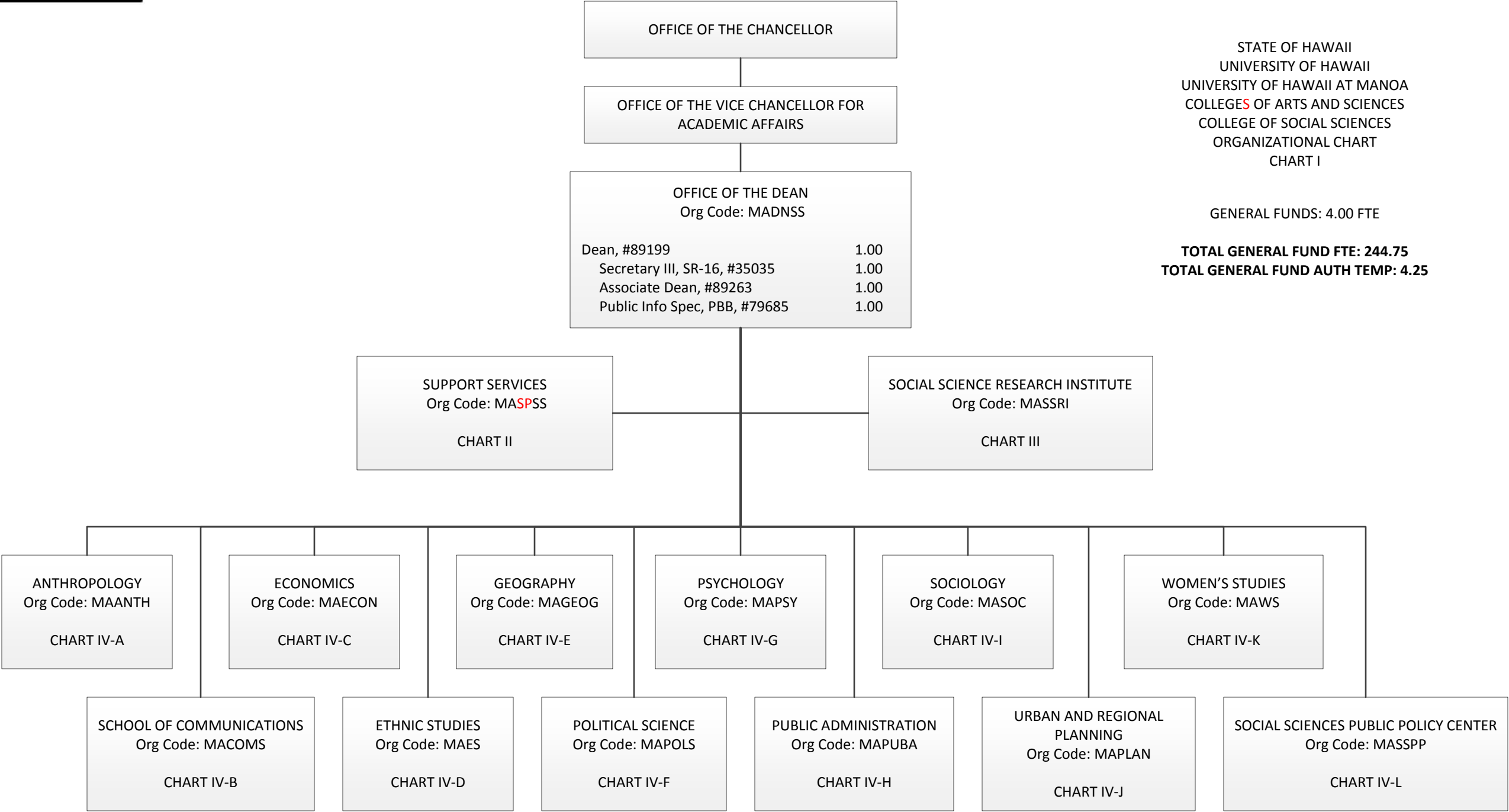
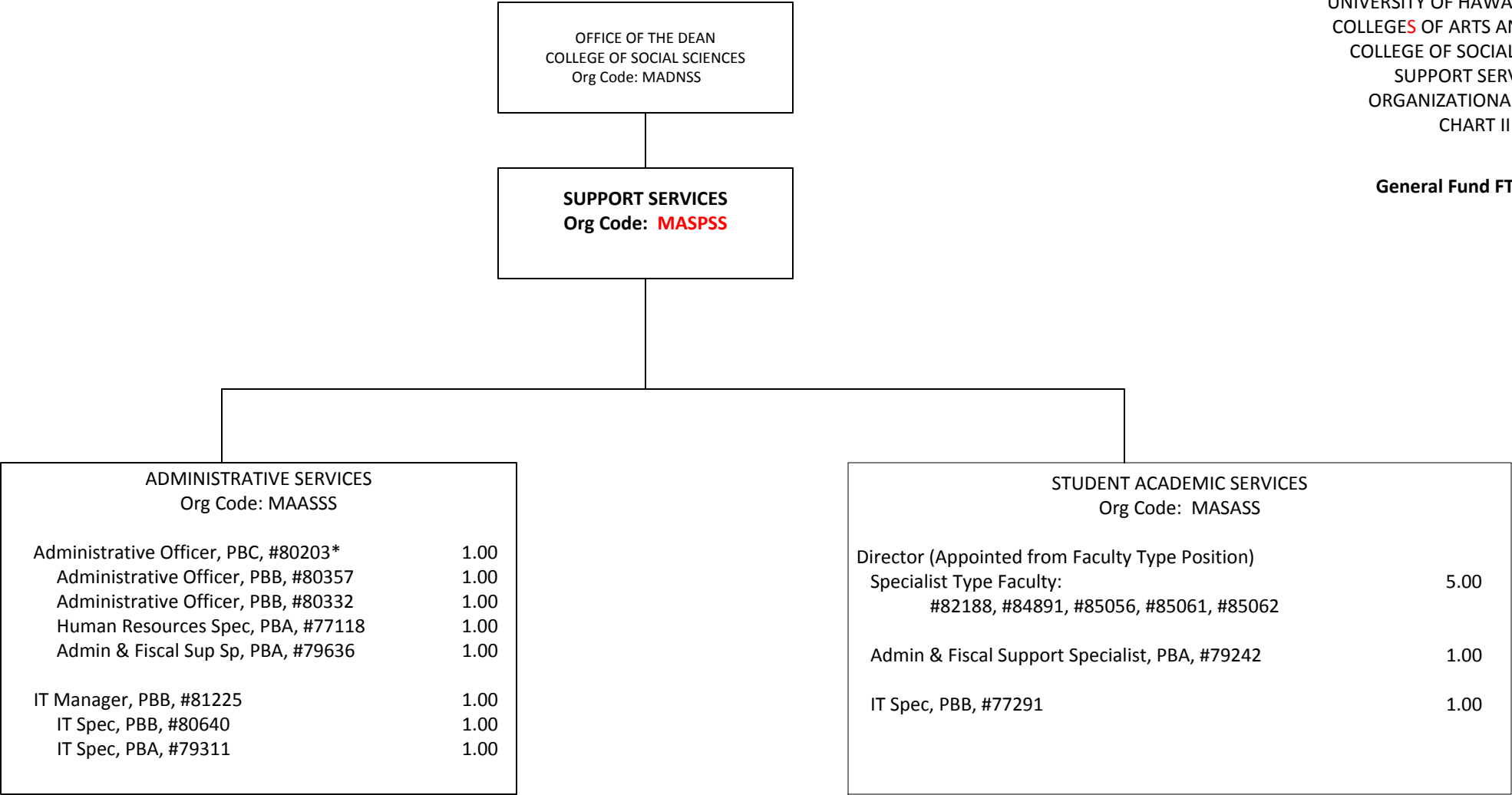


GENERAL FUNDS: 4.00 FTE

**TOTAL GENERAL FUND FTE: 244.75**  
**TOTAL GENERAL FUND AUTH TEMP: 4.25**



General Fund FTE: 15.00



\* Provides technical supervision to positions #77767, #80107, #81943 (Chart III)

OFFICE OF THE DEAN

SOCIAL SCIENCE RESEARCH INSTITUTE  
OFFICE OF THE DIRECTOR  
Org Code: MASSRI  
  
Director, #862261.00  
Specialist Type Faculty:  
#88743, #88751 (0.75)1.75  
Adm & Fiscal Support Sp, PBA, #800871.00  
#80819T0.25T

FISCAL SERVICES  
Org Code: MAASRI  
  
Administrative Officer, PBB3.00  
#77767, #80107, #81943

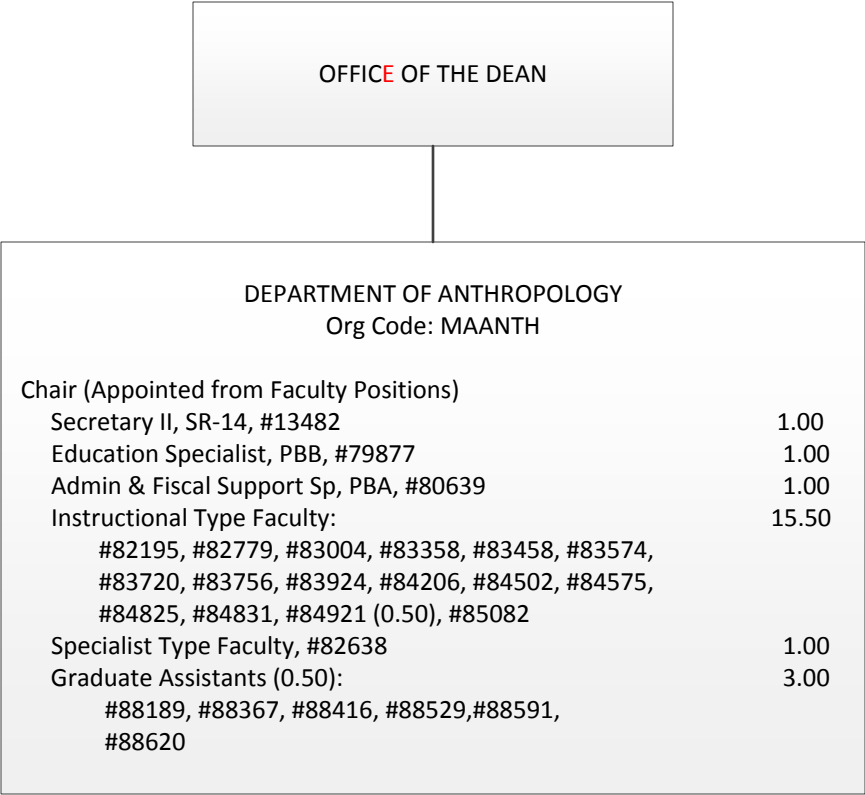
ECONOMIC RESEARCH ORGANIZATION  
Org Code: MARSRI  
  
Instr Type Faculty, #84797 (0.50)0.50  
Instr Type Faculty, #848711.00  
Specialist Type Faculty:  
#84643, #84870, #857363.00  
#88133T(0.50)0.50T  
IT Specialist, PBB, #795471.00

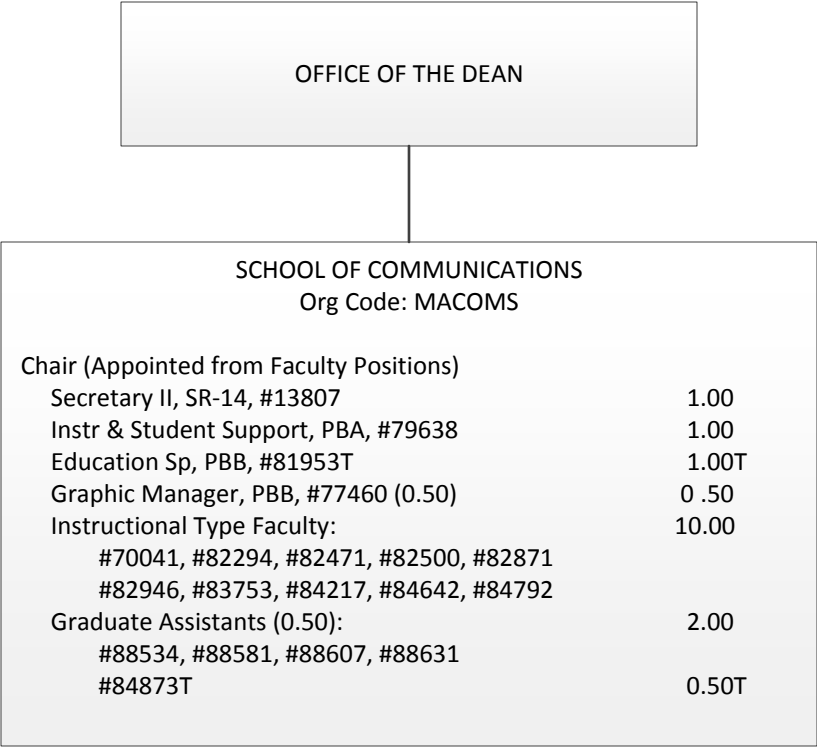
CENTER FOR ORAL HISTORY  
Org Code: MAOHRI  
  
Ed Specialist, PBB, #808131.00  
Research Assoc, PBB, #809351.00  
Research Assoc, PBA, #77024 (0.50)0.50

CENTER FOR YOUTH RESEARCH  
Org Code: MAYRRI  
  
Instr Type Faculty, #84797 (0.50)0.50  
Ed Specialist, PBB, #805311.00

TELECOMMUNICATIONS AND SOCIAL INFORMATICS (TASI)  
RESEARCH PROGRAM / PEACESAT  
Org Code: MAPSAT  
  
Specialist Type Faculty, #862251.00

General Fund FTE: 22.50

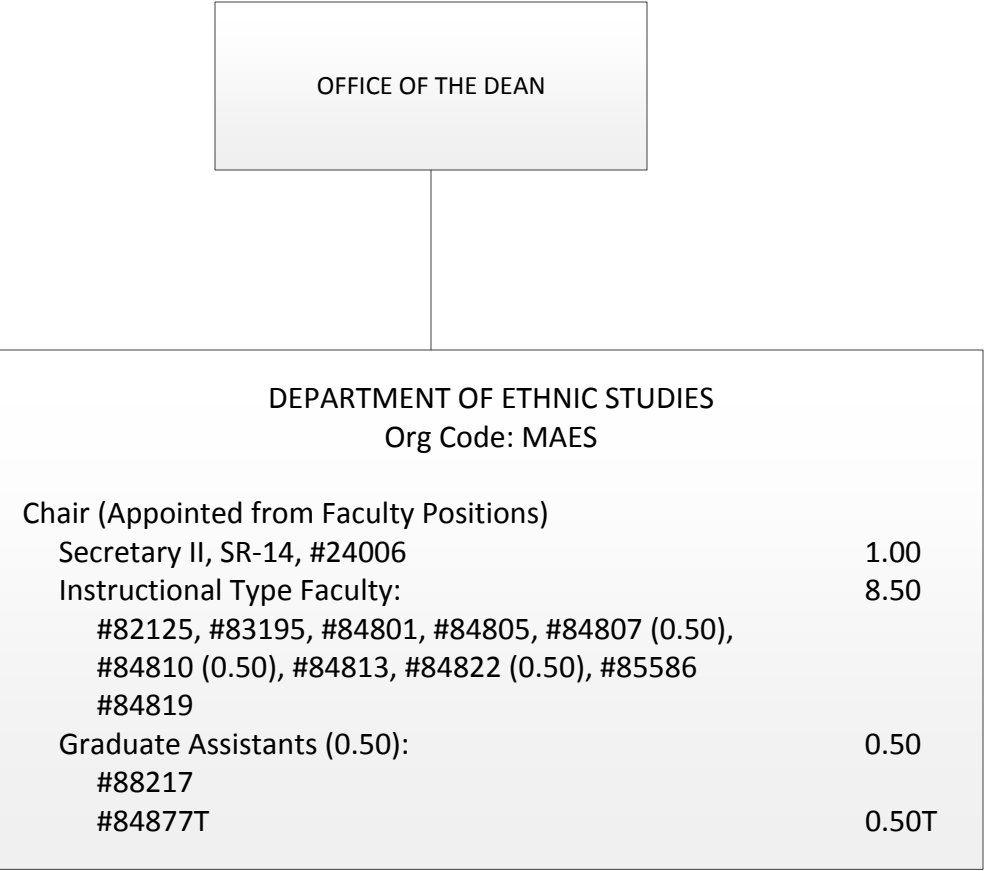




STATE OF HAWAII  
UNIVERSITY OF HAWAII  
UNIVERSITY OF HAWAII AT MANOA  
COLLEGES OF ARTS AND SCIENCES  
COLLEGE OF SOCIAL SCIENCES  
SCHOOL OF COMMUNICATIONS  
ORGANIZATIONAL CHART  
CHART IV-B

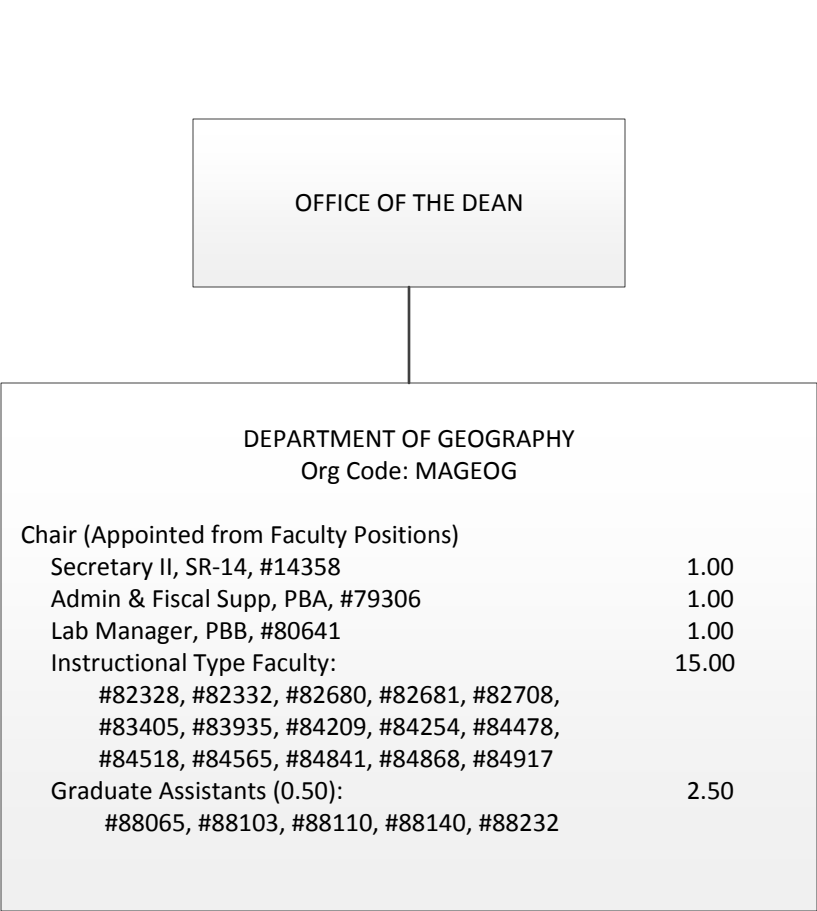
General Fund FTE: 14.50  
Authorized Temps:1.50





STATE OF HAWAII  
UNIVERSITY OF HAWAII  
UNIVERSITY OF HAWAII AT MANOA  
COLLEGES OF ARTS AND SCIENCES  
COLLEGE OF SOCIAL SCIENCES  
DEPARTMENT OF ETHNIC STUDIES  
ORGANIZATIONAL CHART  
CHART IV-D

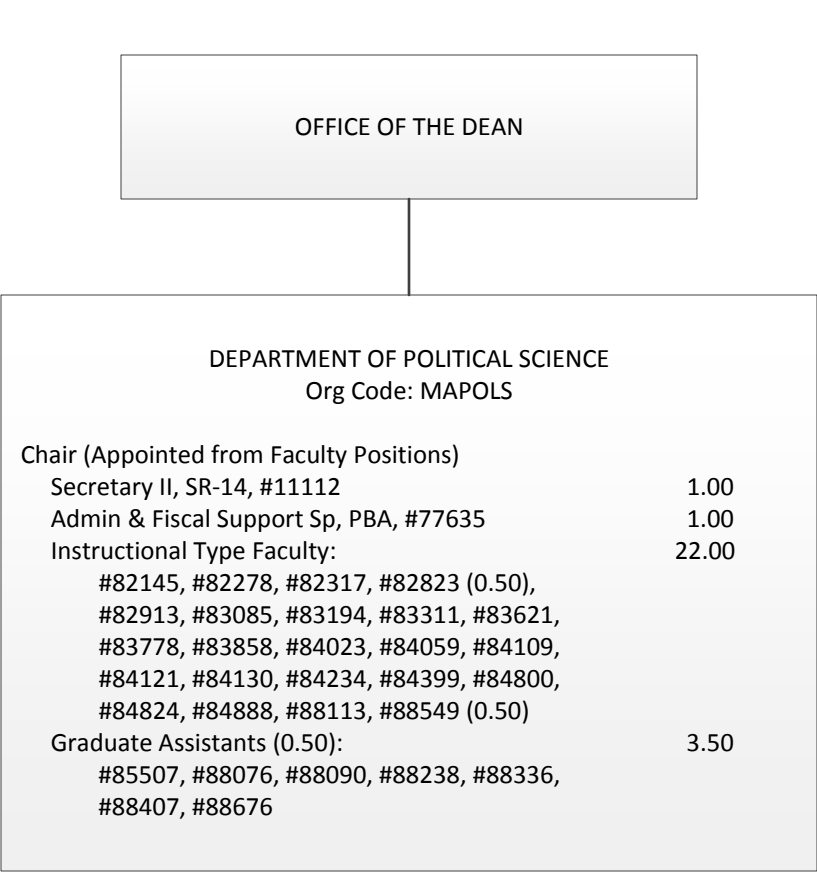
GENERAL FUND FTE: 10.00  
AUTH TEMP: .50

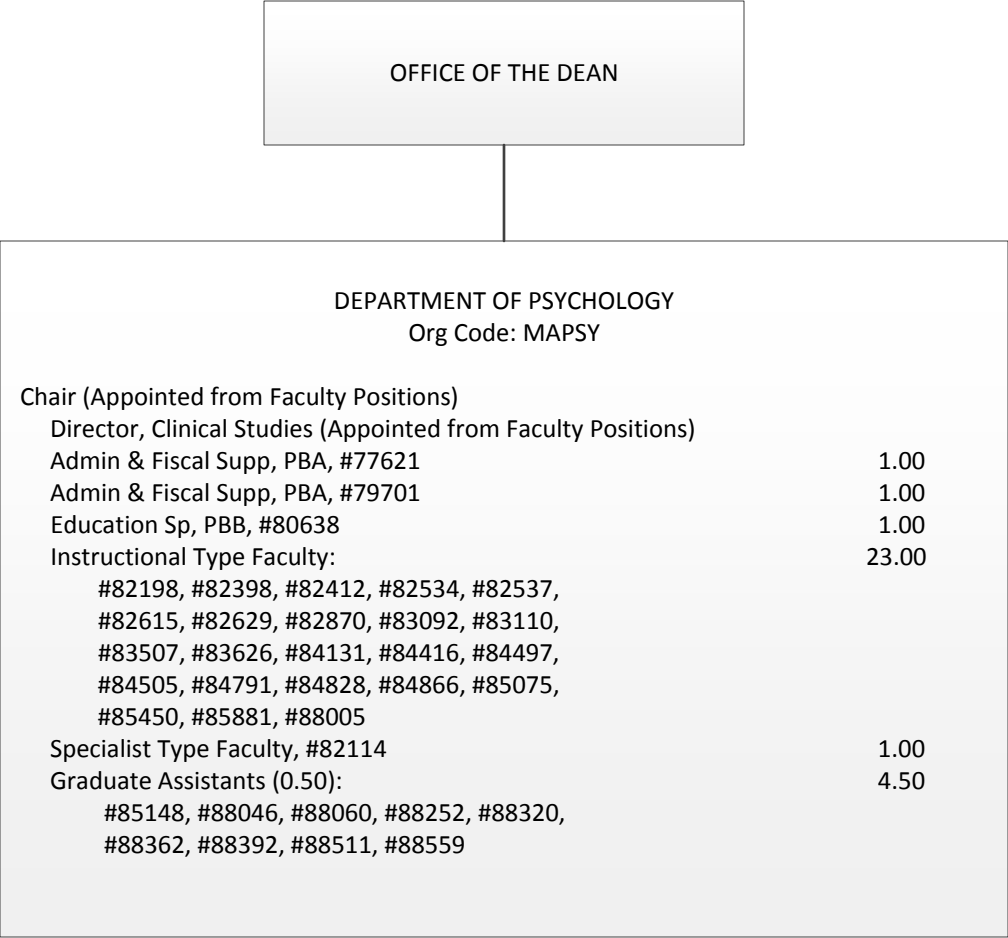


STATE OF HAWAII  
UNIVERSITY OF HAWAII  
UNIVERSITY OF HAWAII AT MANOA  
COLLEGES OF ARTS AND SCIENCES  
COLLEGE OF SOCIAL SCIENCES  
DEPARTMENT OF GEOGRAPHY  
ORGANIZATIONAL CHART  
CHART IV-E

GENERAL FUND FTE: 20.50





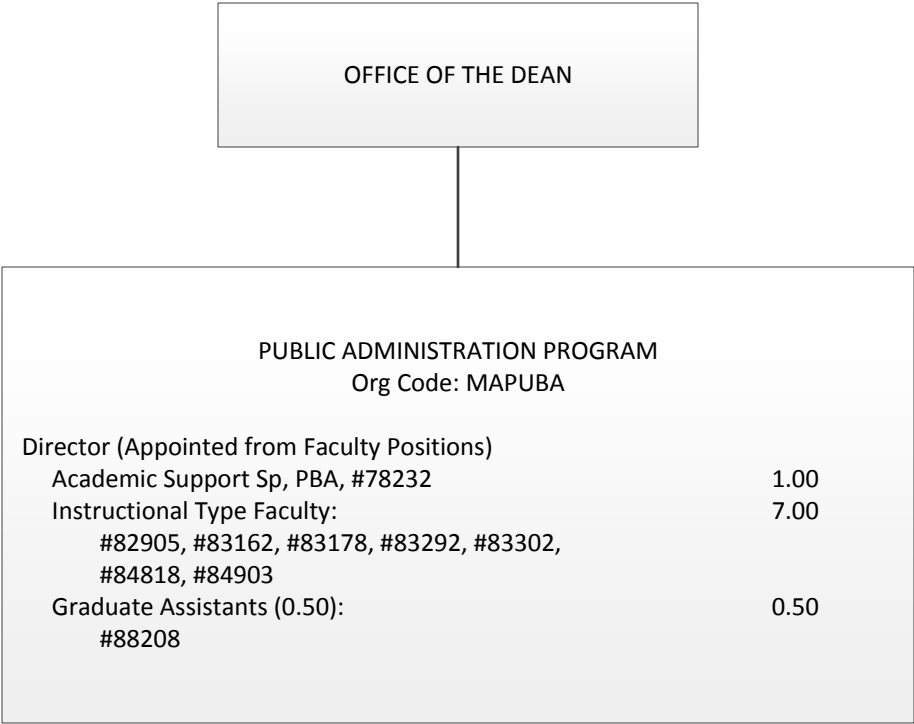


STATE OF HAWAII  
UNIVERSITY OF HAWAII  
UNIVERSITY OF HAWAII AT MANOA  
COLLEGES OF ARTS AND SCIENCES  
COLLEGE OF SOCIAL SCIENCES  
DEPARTMENT OF PSYCHOLOGY  
ORGANIZATIONAL CHART  
CHART IV-G

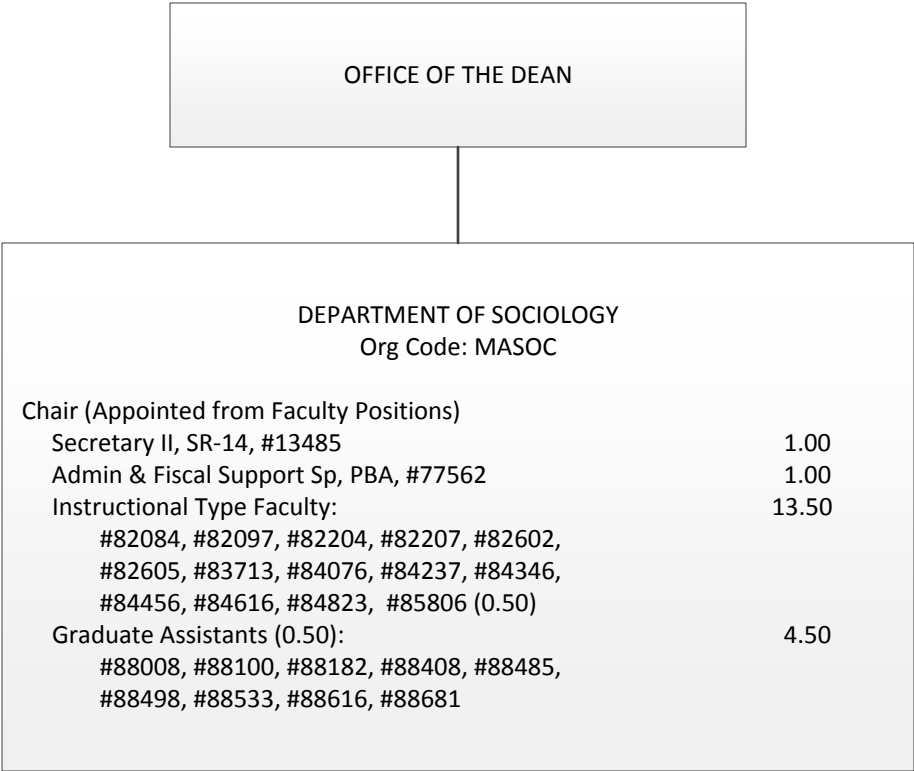
General Fund FTE: 31.50

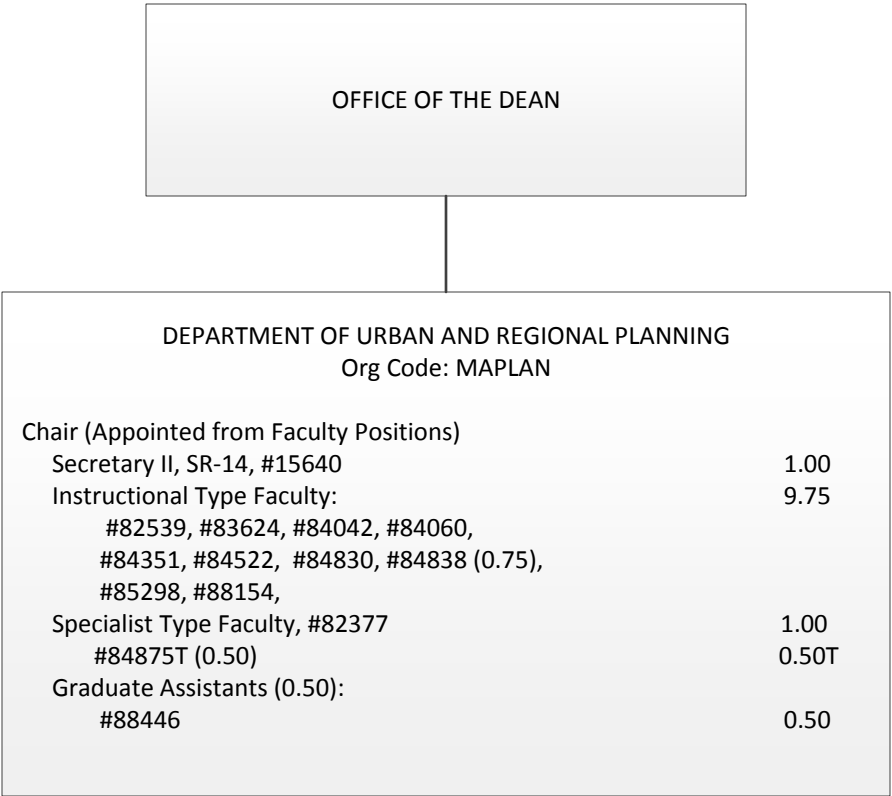
STATE OF HAWAII  
UNIVERSITY OF HAWAII  
UNIVERSITY OF HAWAII AT MANOA  
COLLEGES OF ARTS AND SCIENCES  
COLLEGE OF SOCIAL SCIENCES  
PUBLIC ADMINISTRATION PROGRAM  
ORGANIZATIONAL CHART  
CHART IV-H

GENERAL FUND FTE: 8.50

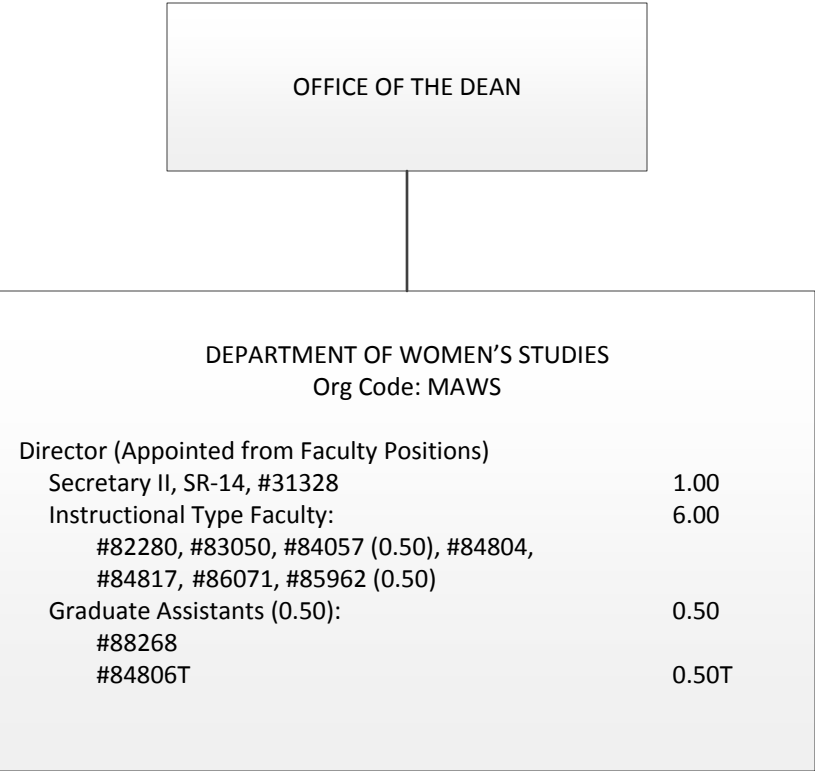


GENERAL FUND FTE: 20.00



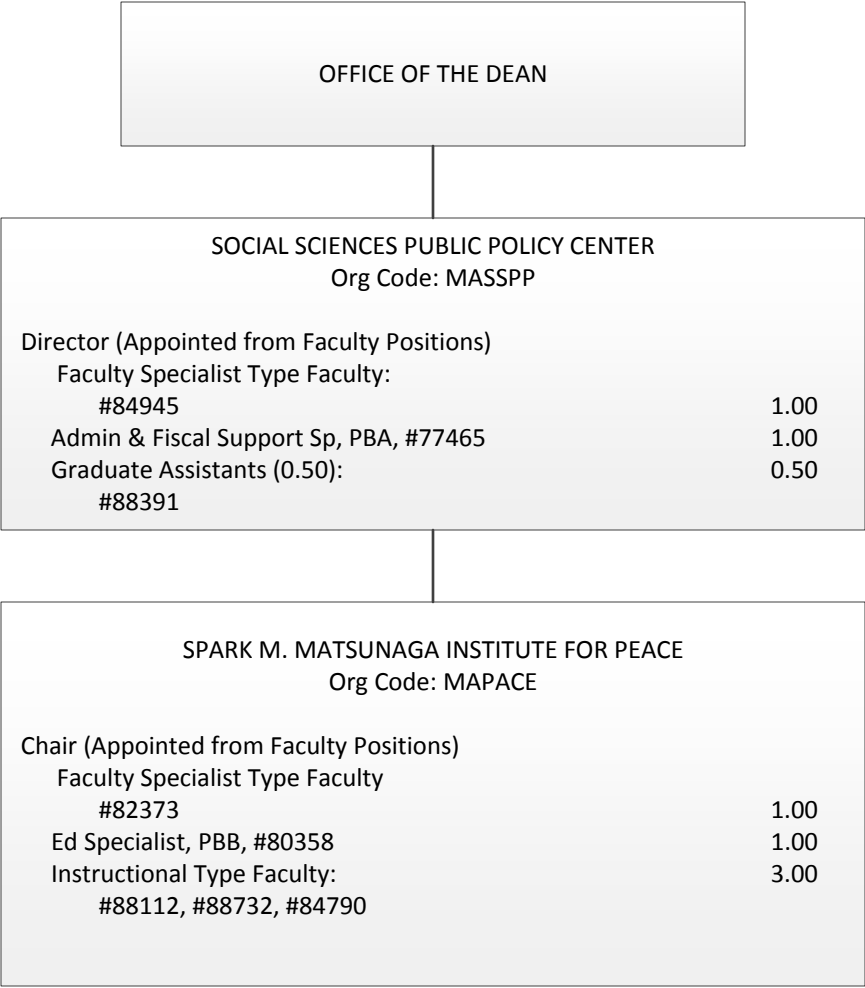


STATE OF HAWAII  
UNIVERSITY OF HAWAII  
UNIVERSITY OF HAWAII AT MANOA  
COLLEGES OF ARTS AND SCIENCES  
COLLEGE OF SOCIAL SCIENCES  
DEPARTMENT OF URBAN AND REGIONAL PLANNING  
ORGANIZATIONAL CHART  
CHART IV-J  
  
General Fund FTE: 12.25  
Authorized Temp FTE: 0.50



STATE OF HAWAII  
UNIVERSITY OF HAWAII  
UNIVERSITY OF HAWAII AT MANOA  
COLLEGES OF ARTS AND SCIENCES  
COLLEGE OF SOCIAL SCIENCES  
DEPARTMENT OF WOMEN’S STUDIES  
ORGANIZATIONAL CHART  
CHART IV-K

GENERAL FUND FTE: 7.50  
AUTHORIZED TEMP: 0.50



General Fund FTE: 7.50