

State of Hawaii
University of Hawaii
University of Hawaii at Manoa
**OFFICE OF THE VICE CHANCELLOR
FOR ACADEMIC AFFAIRS**

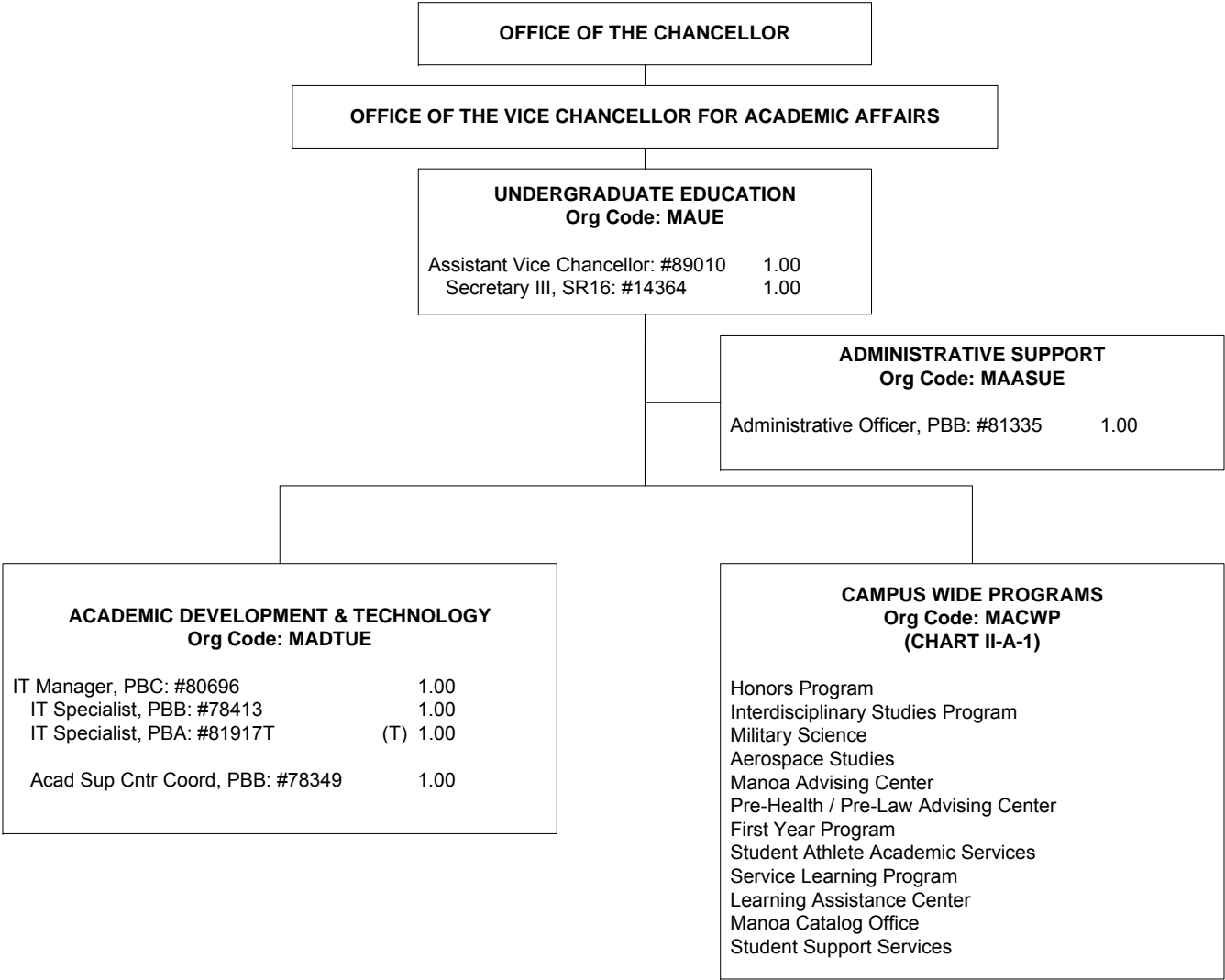
Position Organization Chart
Chart II

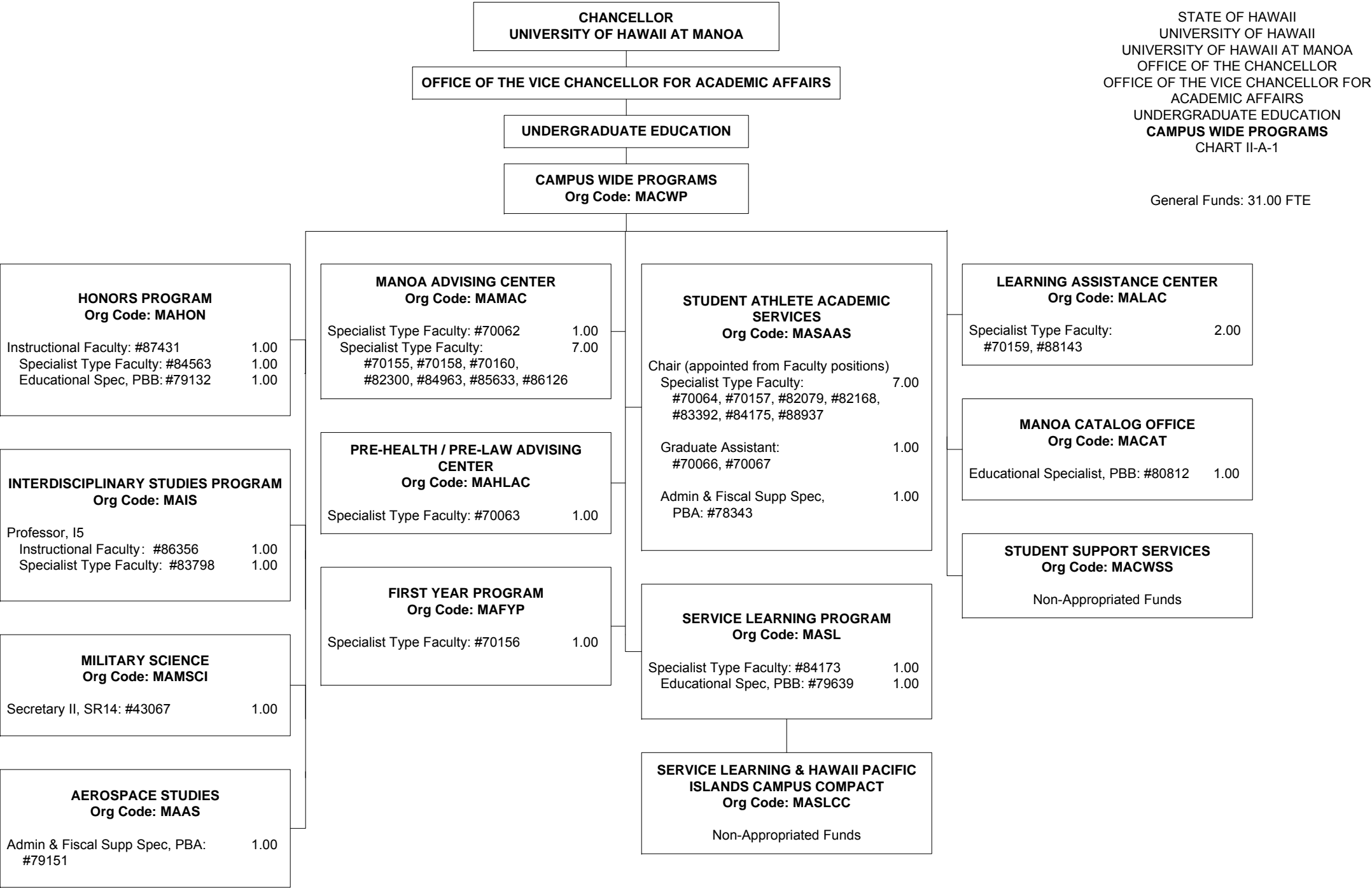
GENERAL FUND FTE: 10.00
GRAND TOTAL GENERAL FUNDS FTE: 107.00
GENERAL FUND (AUTH TEMP) (T): 1.00

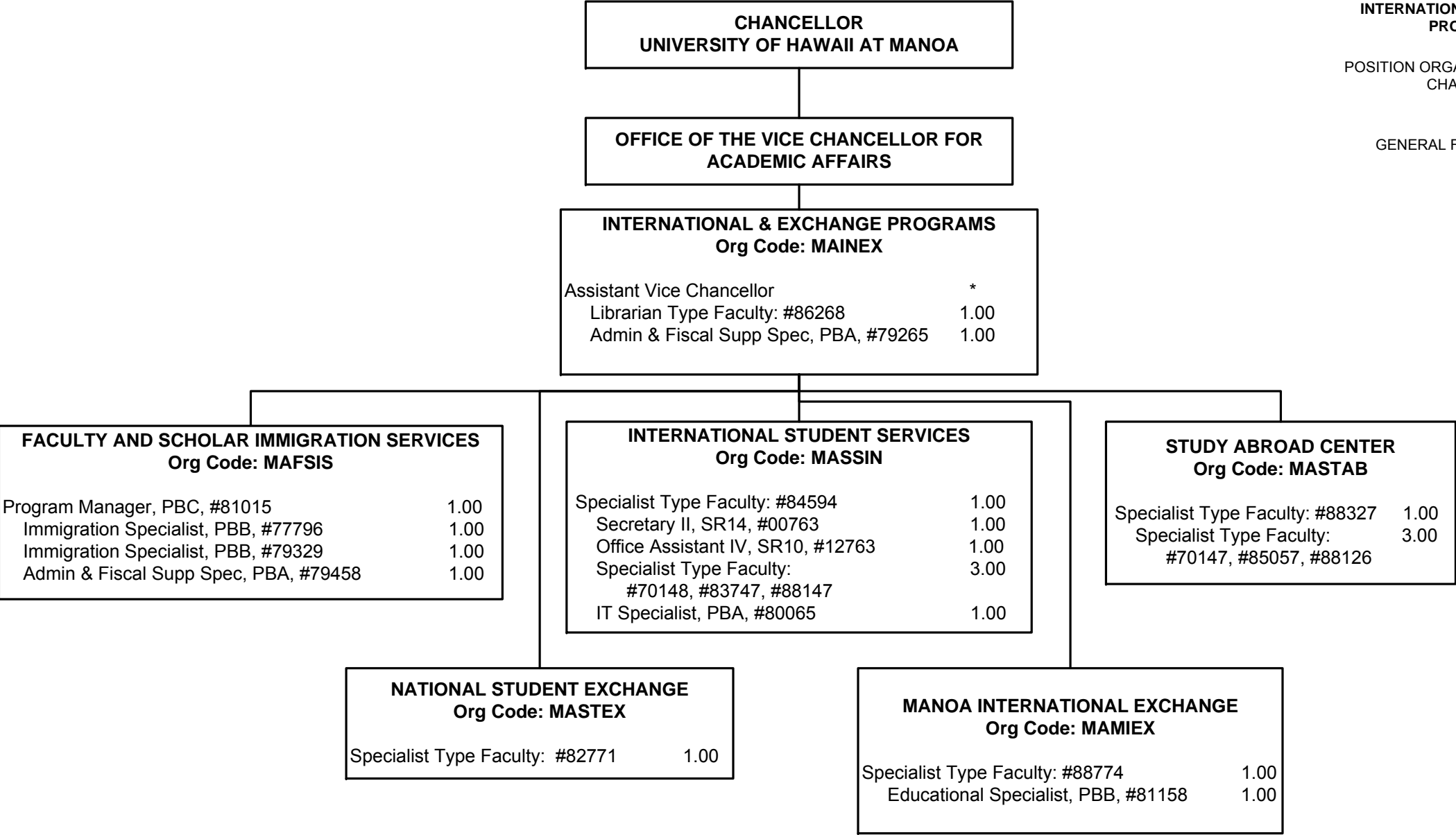
† Except John A. Burns School of Medicine, William S. Richardson School of Law, and the School of Ocean and Earth Science and Technology

STATE OF HAWAII
UNIVERSITY OF HAWAII
UNIVERSITY OF HAWAII AT MANOA
OFFICE OF THE CHANCELLOR
OFFICE OF THE VICE CHANCELLOR FOR
ACADEMIC AFFAIRS
UNDERGRADUATE EDUCATION
CAMPUS WIDE PROGRAMS
CHART II-A

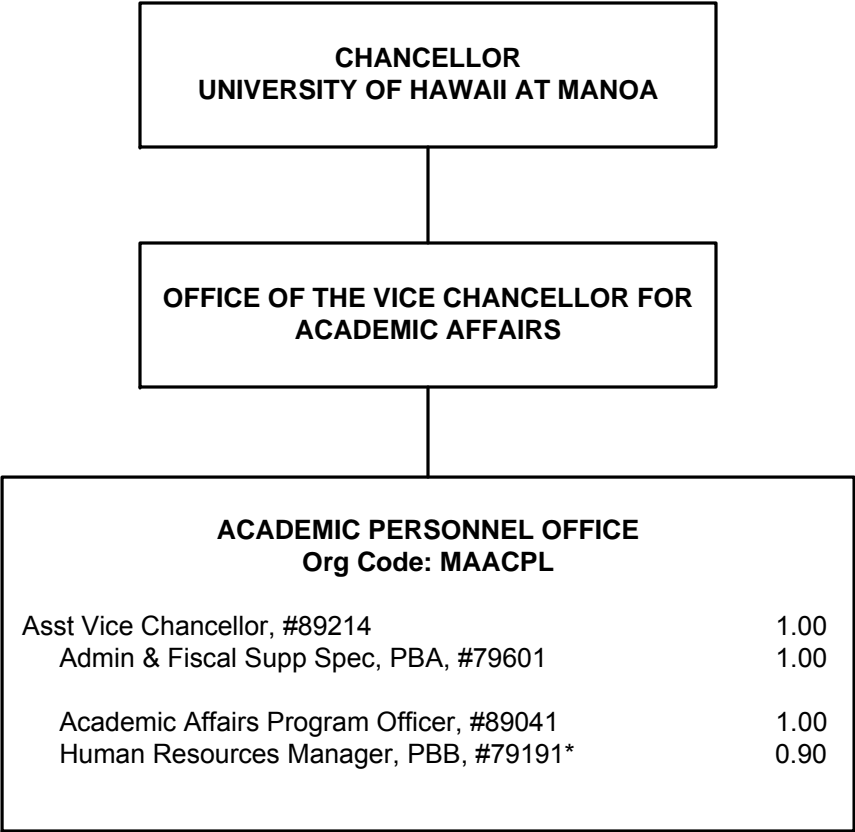
General Funds: 6.00 FTE
General Funds (Auth Temp): 1.00 FTE



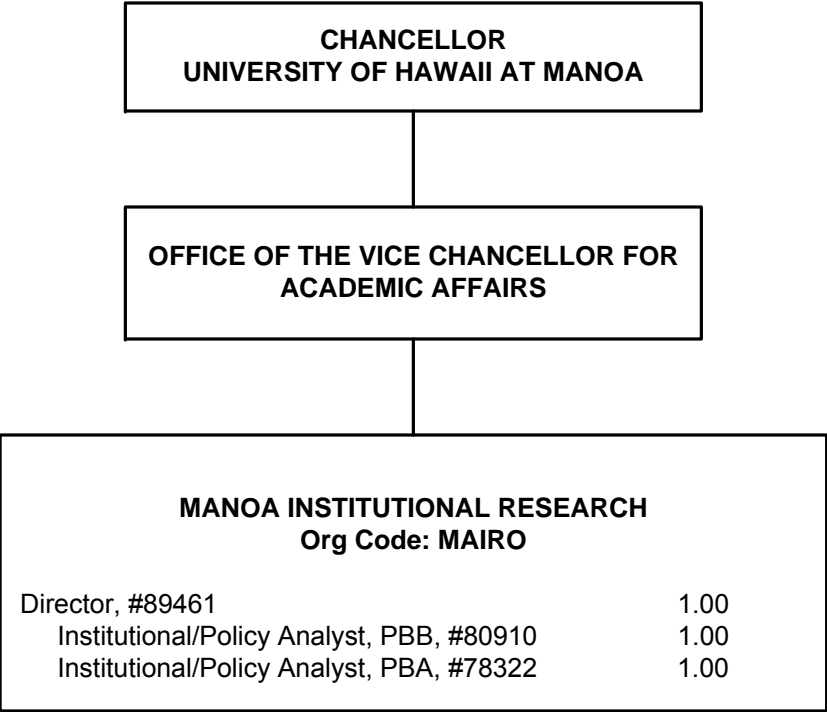




* Appointed from a Dean position.

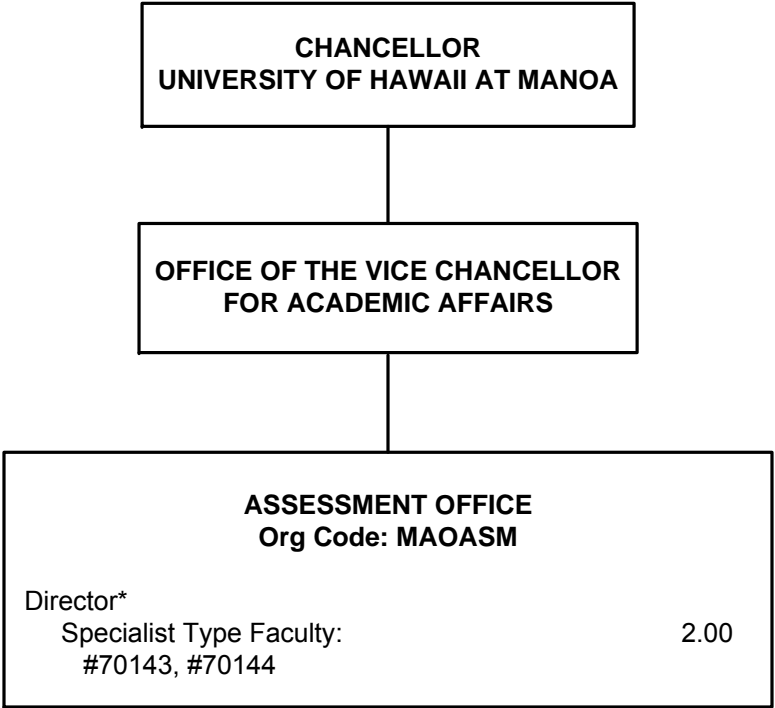


* .10 FTE from 99002F allocated; not established.

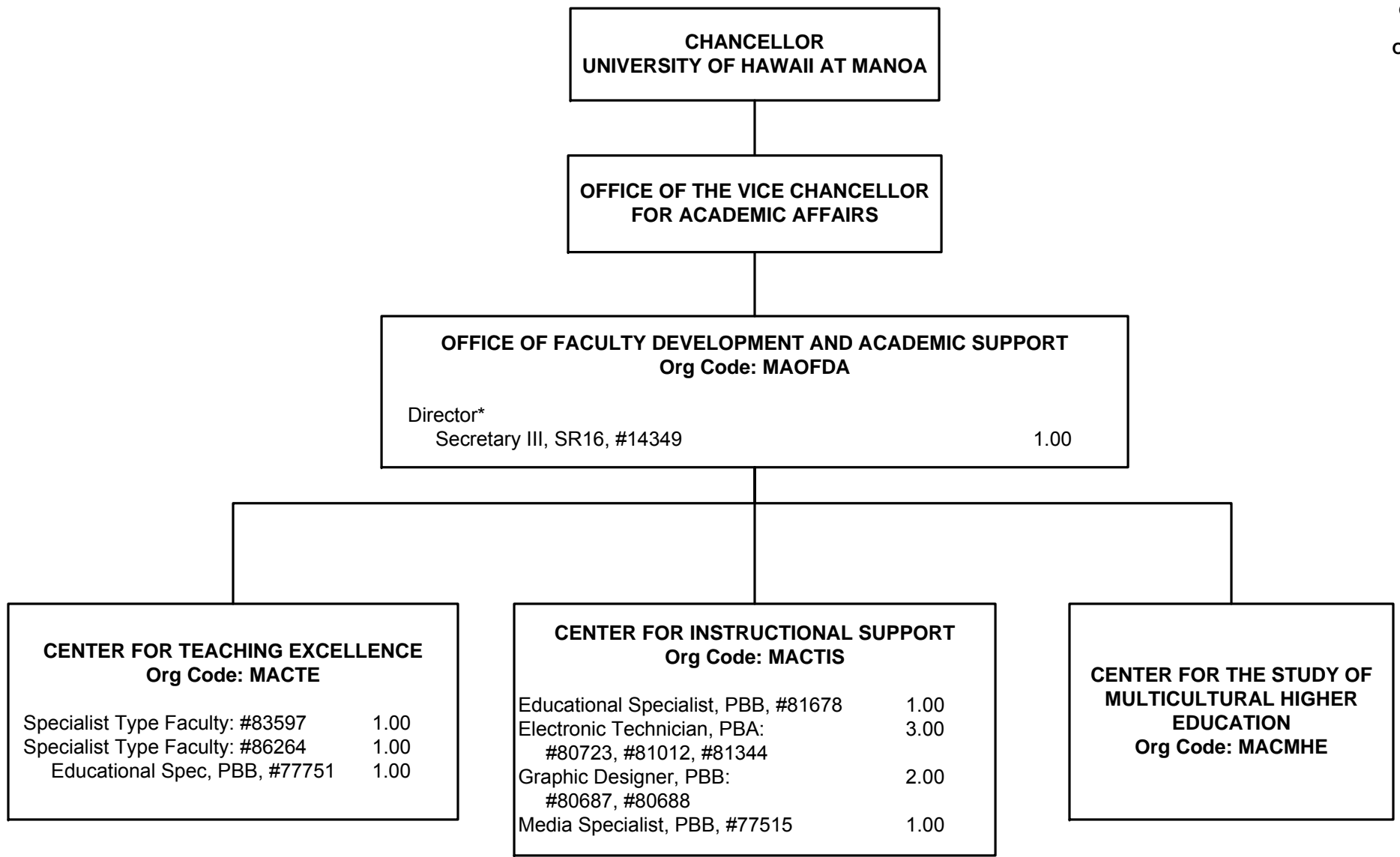


POSITION ORGANIZATION CHART
CHART II-D

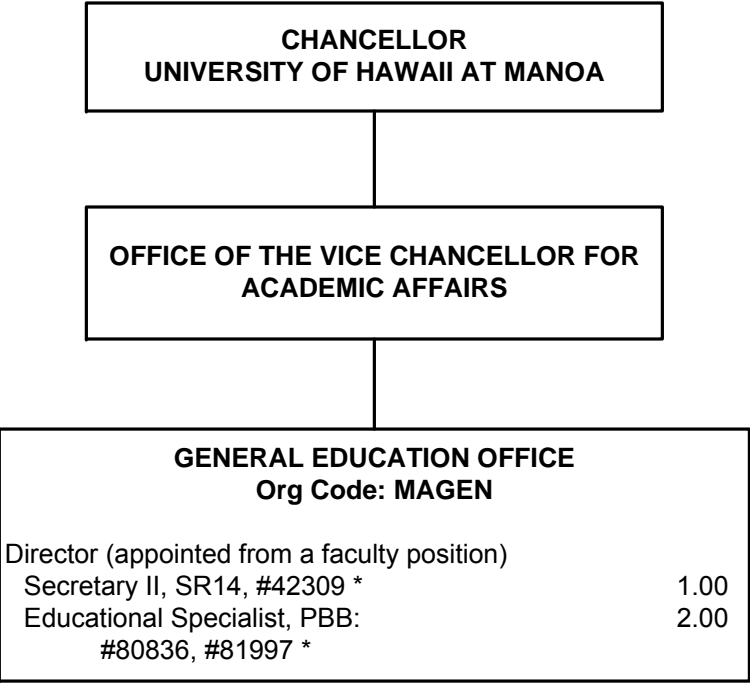
GENERAL FUND FTE: 3.00



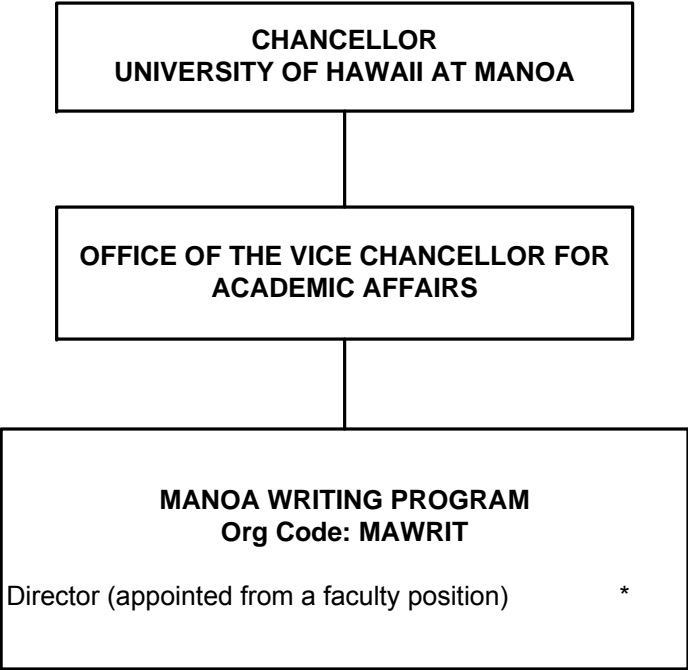
*Appointed from a faculty position to oversee Assessment operations



*Appointed from a faculty position to oversee OFDAS operations



* Positions partially support the Mānoa Writing Program.

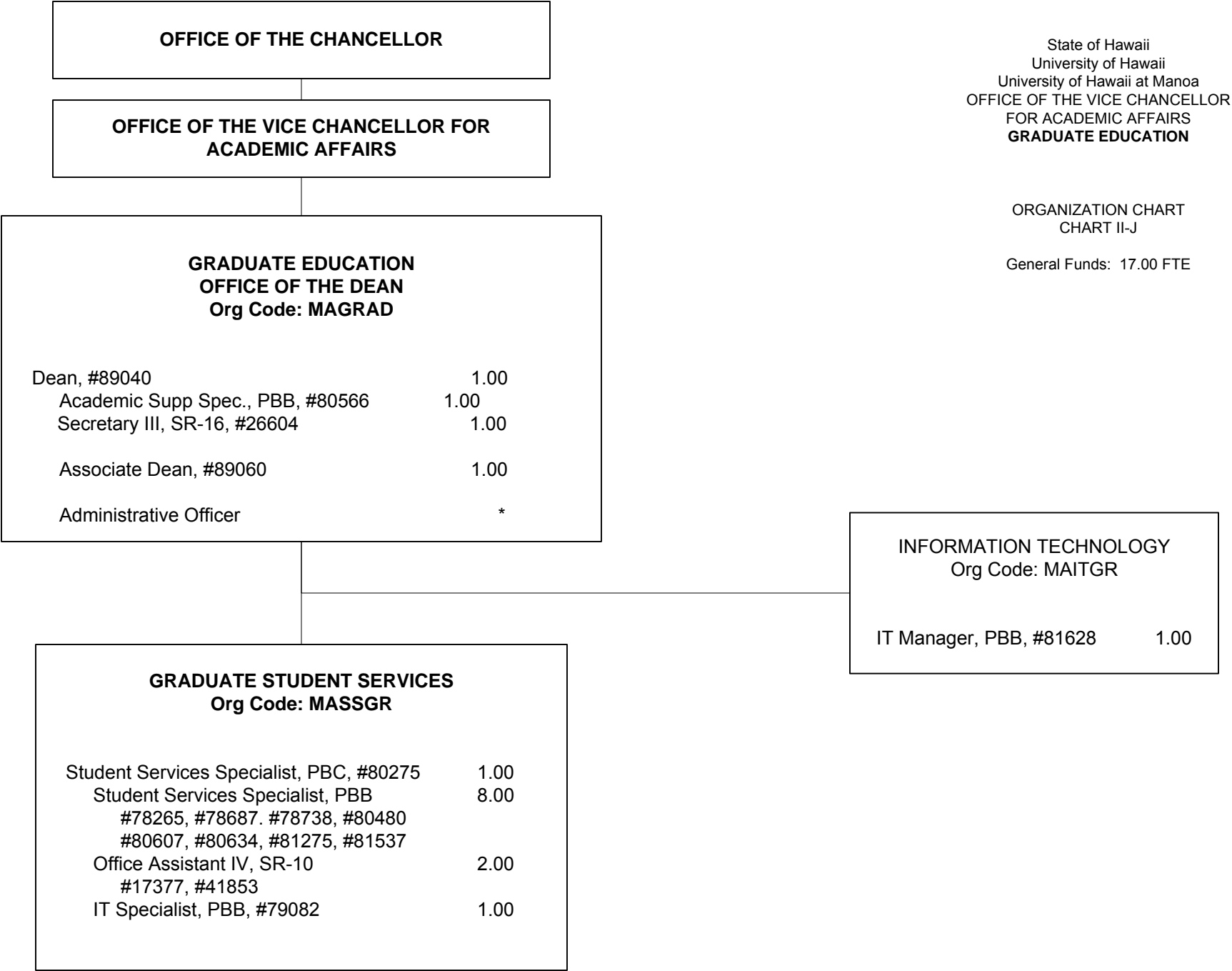


State of Hawaii
University of Hawaii
University of Hawaii at Manoa
OFFICE OF THE VICE CHANCELLOR
FOR ACADEMIC AFFAIRS
MANOA WRITING PROGRAM

POSITION ORGANIZATION CHART
CHART II-H

GENERAL FUND FTE: 0.00

* Positions in the General Education Office partially support this Office: Secretary II, SR14, #42309 and Educational Specialists, PBB, #80836, #81997. Primary supervisor is General Education Office Director.



* Position Number and Count to be requested